

BOGGABRI COAL MINE MODIFICATION

Community Newsletter No.4

May 2024

INTRODUCTION

Boggabri Coal Operations Pty Ltd (BCOPL) operates the Boggabri Coal Mine (BCM) on behalf of Idemitsu Australia Pty Limited (IA) and its joint venture partners. BCM has operated since 2006 and is located approximately 15 km north-east of the Boggabri township in the North West Region of NSW.

BCOPL is preparing an application which seeks approval to extend the mine life of the BCM to recover additional coal resources within the existing mining authorities, both within and to the north-west of the approved Mine Disturbance Boundary. This is being referred to as the Boggabri Coal Mine Modification (the Modification).

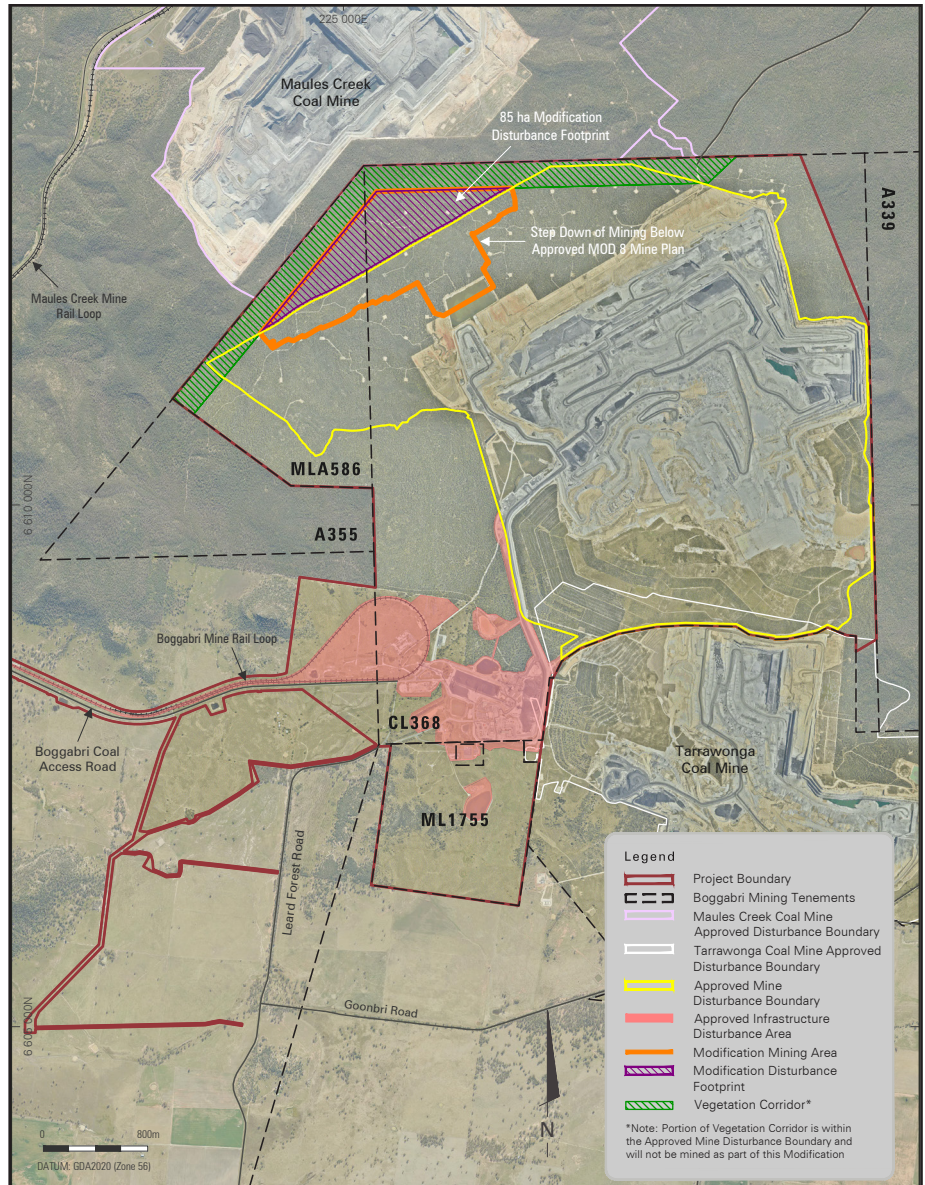
This newsletter is the fourth in a series designed to provide the local community with up to date information in relation to changes to BCM's environmental approvals. It provides:

- Relevant information on the status of the application processes;
- An update on the environmental assessments is planned to be undertaken; and
- An opportunity for interested parties to provide feedback on the proposed changes to the BCM environmental approvals.

ABOUT THE MODIFICATION

The Modification proposes the natural progression of mining operations at the BCM towards the north-west into an area beyond the approved Mine Disturbance Boundary (2012) and within the existing mining authorities. These plans for the progression of mining operations facilitates the recovery of additional coal resource within the approved Mine Disturbance Boundary. The proposed Modification Mining Area is illustrated in Figure 1. The additional mining proposed by the Modification involves the following:

- An additional 85 hectares (ha) of disturbance;
- Recovery of an additional 30 Million tonnes (Mt) of Run of Mine (ROM) coal, yielding approximately 25 Mt of additional product coal;



BOGGABRI COAL MINE Figure 1 - Indicative Modification Layout

- An additional four years of mining activities to the end of 2040; and
- A revision to the Conceptual Final Landform design to reflect the additional mining area.

It is proposed mining operations will continue to recover coal down to the Templemore Seam as recently approved in the BCM Modification 8 to SSD 09_0182 (MOD 8). The Modification does not propose to alter the maximum annual ROM or product coal production rates,

and will maintain current ancillary surface infrastructure, coal extraction, processing and transportation methods, operating hours and workforce.

The additional mining area for the Modification will not result in any disturbance to the Vegetation Corridor which has been established between the BCM and Maules Creek Coal Mine.

PLANNING AND ASSESSMENT PROCESS

Approval for the Modification will be sought by way of an modification application under Section 4.55(2) of the *Environmental Planning and Assessment Act 1979*. A robust environmental assessment will be prepared in support of the modification application which will be lodged with the Department of Planning, Housing and Infrastructure (DPHI) for assessment.

Planning and initial works for the preparation of specialist environmental, social and economic studies which will ultimately be appended to the environmental assessment has commenced.

BCOPL has commenced preliminary consultation with DPHI to present an overview of the proposed additional mining operations and to confirm the proposed approvals pathway and environmental assessments to be completed for the Modification.

A Referral for the Modification will be lodged with the Commonwealth Department of Climate Change, Energy, the Environment and Water (DCCEEW) to determine whether the proposed additional mining operations is a "Controlled Action" under the *Environment Protection and Biodiversity Conservation Act 1999* (EPBC Act). In the event that the Modification is deemed a "Controlled Action", DCCEEW will issue guidance to DPHI on the scope of the environmental assessments to be addressed within the environmental assessment.



ENVIRONMENTAL ASSESSMENTS

Specialist technical studies are planned to be undertaken to assess the potential impacts resulting from the Modification, include:

- Biodiversity;
- Aboriginal Cultural and Historic Heritage;
- Air Quality and Greenhouse Gas;
- Acoustics (noise and blasting);
- Water Resources (surface water and groundwater);
- Geochemistry;
- Soils, Rehabilitation and Final Landform;
- Visual; and
- Socio-economics.

The environmental assessments for the Modification have commenced in parallel with monitoring and various environmental and community assessment activities eg. seasonal targeted biodiversity surveys. Specialists technical studies are anticipated to continue throughout 2024.

The modification application and supporting Modification Report is scheduled for submission to DPHI for its consideration in the second half of 2024.

COMMUNITY CONSULTATION

BCOPL prides itself in being a long-standing member of the community, providing employment opportunities, supporting local businesses, and continued development of strong relationships across the North West Region of NSW.

BCOPL has developed a Stakeholder Consultation Plan for the Modification which entails ongoing communications with the community including regular newsletter updates, face to face discussions with affected stakeholders whom request a briefing over the Modification and regular presentations to the BCM Community Consultative Committee (CCC).

Community stakeholders will also have the opportunity to participate in an independent community survey as part of the Social Impact Assessment that is being prepared. A link to this survey will be provided on the BCM website and in future Newsletters.

The main purpose of stakeholder engagement is to identify any community concerns in relation to the Modification, so they can be carefully considered in the planning and approvals process.

If you would like to receive a more detailed briefing or be contacted to discuss the Social Impact Assessment, please provide your details to the contact below.

FURTHER INFORMATION

If you have any questions in regard to the Modification or any BCM related activities, please contact:

Alex Williams

Environmental Compliance
Superintendent
Boggabri Coal Operations Pty Ltd

Phone: 02 6749 5013

Email: bclbgi-environmental@boggabricoal.com.au