

Boggabri Modification 8

Community Newsletter No.1 | January 2021

Introduction

Boggabri Coal Operations Pty Limited (BCOPL) has operated the Boggabri Coal Mine (BCM) on behalf of Idemitsu Australia Resources (IAR) and its joint venture partners since 2006.

BCM is located approximately 15 kilometres (km) north-east of the township of Boggabri in the North West Region of New South Wales (NSW) and is located wholly within the Narrabri Local Government Area (LGA).

BCOPL is preparing a Modification application to submit to the NSW Department of Planning, Industry and Environment (DPIE) to enable mine plan changes at the BCM.

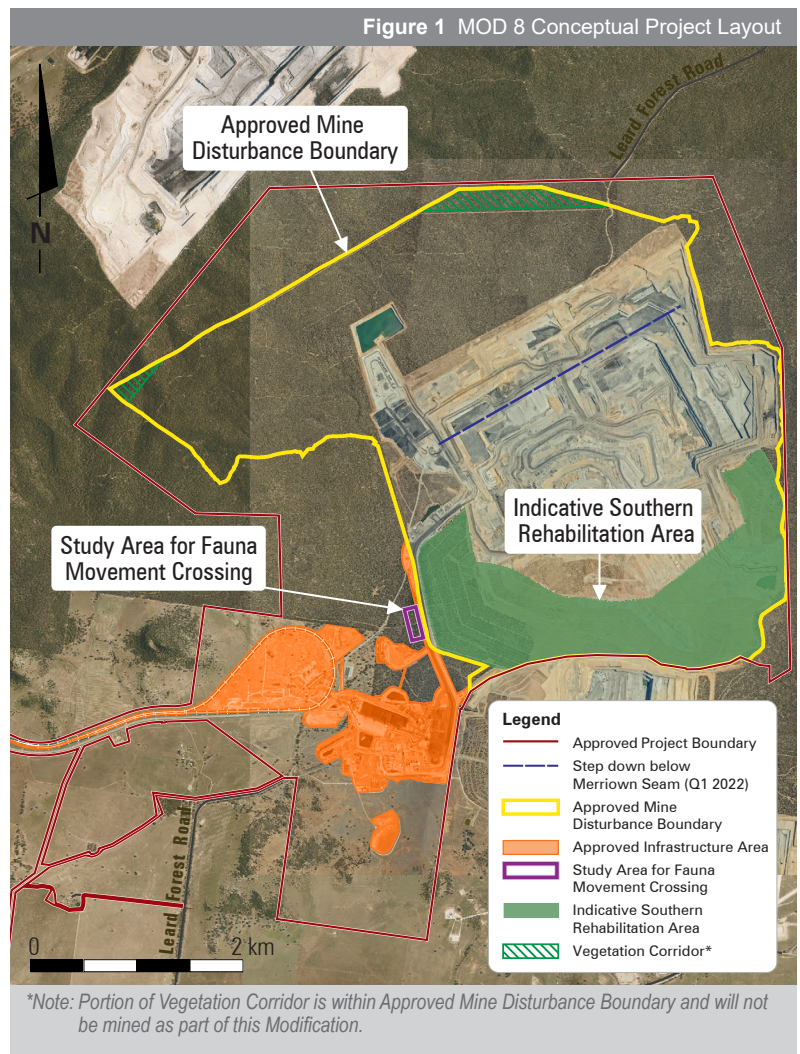
This newsletter is the first in a series to provide the local community information on the Modification". Its objective is to provide:

- relevant information on the progression of the Modification application process;
- an update on the environmental planning and assessment process; and
- an avenue for you to provide feedback on the information provided on the Modification.

The Modification

BCOPL is seeking to modify the existing Project Approval (now known as State Significant Development (SSD) Consent) 09_0182 via an application under Section 4.55 of the *Environmental Planning and Assessment Act 1979* (EP&A Act). A conceptual layout of the Modification is shown on **Figure 1** and generally comprises the following:

- Increasing the approved maximum depth of mining down to the Templemore Coal Seam (and associated mine plan amendments) to recover an additional 61.6 Million tonnes (Mt) of Run of Mine (ROM) coal resource within the currently approved Mine Disturbance Boundary, resulting in a six year extension to mine life (i.e. from the end of 2033 to the end of 2039); and



- Construction of a specifically designed fauna movement crossing across the existing haul road between the rehabilitated overburden emplacement area and the western side of the regional biodiversity corridor. The establishment of the fauna movement crossing is proposed to improve the movement of fauna from the Leard State Forest through the Southern Rehabilitation Area.

Detailed design of the Fauna Movement Crossing is currently being investigated. However it is anticipated that the crossing may require minor disturbance of less than 1.21 ha to ensure it blends with the surrounding environment.

Various mine plan options and infrastructure designs have been considered to ensure operational efficiencies, whilst ensuring that environmental impacts are minimised.

Statement of Environmental Effects (SEE)

BCOPL is currently preparing a detailed SEE to be submitted as part of its application to modify SSD 09_0182.

Technical environmental assessments are being undertaken for the SEE and include:

- Ecology;
- Aboriginal Cultural and Historic Heritage;
- Air Quality and Greenhouse Gas;
- Acoustics (noise and blasting);
- Water Resources (surface water and groundwater);
- Soils, Rehabilitation and Final Landform;
- Geochemistry;
- Traffic and Transport;
- Visual; and
- Socio-economics.

Social Impact Assessment

As part of the Social Impact Assessment being prepared for the SEE, Lauren Jessup of Hansen Bailey will be conducting telephone interviews with service providers and members of the community. The purpose of this engagement is to validate existing social baseline data, understand resident values and aspirations and to discuss the potential perceived impacts and opportunities associated with the Modification.

If you would like to discuss the Modification with Hansen Bailey please phone Lauren Jessup on 0438 805 731.

Community Consultation

A Stakeholder Consultation Strategy has been developed for the Modification and is now underway, with the identification of key regulatory and community stakeholders along with the development of stakeholder engagement plans. Community engagement is proposed to take the form of regular Newsletter updates to neighbours, personal discussions with affected stakeholders who request a briefing and regular presentations to the BCM Community Consultative Committee (CCC). The most recent CCC meeting was held on 29 October 2020 and included a briefing in relation to the proposed Modifications being sought.

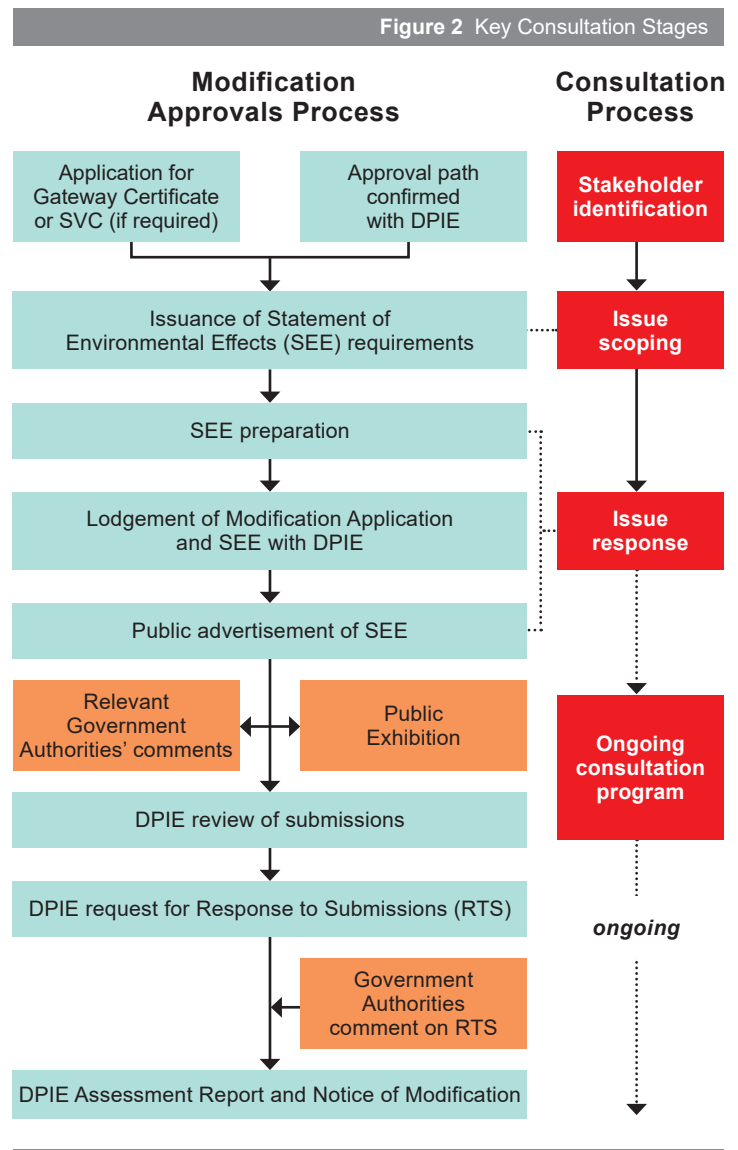
The main purpose of the Stakeholder Consultation Program is to identify any community concerns in relation to the Modification, so that they can be carefully considered in the planning and approvals process.

Where to from here?

The preparation of the SEE has commenced in parallel with exploration works, monitoring and various environmental and community assessment activities. The specialists SEE technical studies are anticipated to continue into early 2021.

BCOPL is also continuing to progress further exploration and mine planning studies to better inform plans to maximise resource recovery and mine life at BCM.

A flowchart showing the key consultation stages in relation to the SEE is shown in **Figure 2**.



Contact Details

If you have any questions regarding the Modification and SEE activities please contact:

Amanda O'Kane

Project Manager - Idemitsu Australia Resources

Phone: **1800 264 422 74**

Email: **Amanda.Okane@idemitsu.com.au**