

Minutes: Boggabri Coal Community Consultative Committee
Held at the Boggabri Golf Club

Thursday 26 May 2022

Members Present: Cathy Redding (CR) – Narrabri Shire Council, Elizabeth O’Hara (EOH) – Community Representative, Geoff Eather (GE) – Community Representative, Hamish Russell (HR) – Boggabri Coal, Michelle Henry (MH) – Narrabri Shire Council, Mitchum Neave (MN) – Community Representative, Roselyn Druce (RD) – Community Representative, Richard Gillham (RG) – Community Representative, Stewart Dunlop (SD) – Boggabri Coal

Independent Chair: David Ross (DR)

Independent Secretary:

Debbie Corlet (DC)

Agenda Items	Who to Present
1. Welcome, Introductions and Apologies	DR
2. Declaration of Pecuniary or other interests	DR
3. Confirmation of the Minutes of the previous meeting – Thursday 24 February 2022	DR
4. Business arising from the previous minutes – Action List Distributed	DR
5. Correspondence	
6. Company Reports and Overview of Activities	SD, HR
7. General Business	ALL
8. Next Meeting – Thursday 25 August 2022	

Agenda Item	Discussion	Action/By Whom
1.	Welcome, Introductions and Apologies – DR welcomed everyone to the 2 nd CCC for the year, particularly to our new members as well. DR advised that Pat Murphy has resigned from the CCC.	ACTION 1 – DR to write a letter of thanks to Pat Murphy
2.	Declaration of pecuniary or other interests – DR noted that he is paid a fee to chair these meetings as is DC for typing the minutes. RG has a property that falls under the zone of affectation.	
3.	Confirmation of the minutes of the previous meeting (24 February 2022) – Everyone was comfortable that the previous meeting minutes were an appropriate reflection of what was discussed.	
4.	Business Arising from the previous minutes – HR and SD have responded to questions previously. EOH would like to have a slide on tyres included in presentations moving forward please – even just one line would suffice.	ACTION 2 – HR to include a slide re tyres

5.

Correspondence

NSW Department of Planning & Environment

- Site visit conducted 16 March 2022, inspected tree clearing activities and site operations.
- Annual Review submitted. Discussed Namoi Region Air Quality Monitoring Network.
- Traffic Management Plan submitted for approval. Reported blast exceedance from 30 April.

DR updated members on the Namoi Region Air Quality Advisory Committee. The committee had a 2-year term, which came to an end some time ago. Due to lack of new applications, the EPA have decided to run targeted community information sessions in each of relevant shires, maybe later on this year.

A discussion then took place about the importance of providing the community with information on air quality and the contribution from the mines.

EPA

- Monthly noise reports submitted. EPL 12407 Annual Return submitted.
- Reported blast exceedance from 30 April.

MN asked about whether there is reporting about how carbon is being managed.

HR – It is under the NGERS Reporting.

MN – I did ask about the carbon last year and you said you set your own carbon cap.

SD and HR observed that the mine does not have a carbon cap. Previously, the mine had discussed with the CCC modelling of its carbon emissions after another mine has underestimated its emissions.

Biodiversity Conservation Trust

- Consultation re: Conservation Agreements has continued. The mine has now submitted initial 18 conservation agreements. Site visit of Biodiversity Offset Properties was conducted in March.

SD – Explained that a template agreement had been developed for the initial two properties which would be used for the following agreements. He noted that while he had talked to the CCC previously about there being 12 to 15 agreements to do because of the complex nature of the ownership, that number has blown out to 30. Some of the sites are owned just by the mine; some by WHC. It's quite a complex process. The next batch is a further six that have multiple owners. Finally, the balance is another three which will be transferred to National Parks, who will take on the responsibility.

MN – We've asked for a map before. With colours to show the joint ventures. You've done it before. If you have a joint venture, I'd like to see that.

ACTION 3 – DR to keep in contact with EPA re the NRAQAC and keep CCC informed

ACTION 4 – SD to confirm the number of properties with multiple ownership

	<p>HR agreed to a request from MN to check the previous minutes and to provide a map to show the joint ventures and confirm the numbers of properties with multiple ownership.</p> <p>Forestry Corporation of NSW</p> <ul style="list-style-type: none"> Continuing consultation about access / compensation agreements. <p>Department of Agriculture, Water & Environment</p> <ul style="list-style-type: none"> Condition 28 Audit report submitted – on website (https://bit.ly/3xxmuhs). <p>Narrabri Shire Council</p> <ul style="list-style-type: none"> Meeting held to discuss Traffic Management Plan. <p>RG, CR, SD and HR discussed the Traffic Management Plan, the need for improvements to roads and traffic comparisons between this plan and its predecessor. HR and SD observed that there hasn't been much material change between 2020 and 2021. Indeed, the numbers have remained fairly consistent for the last four or five years.</p> <p>The approved TMP is on the mine's website. The revised TMP is subject of targeted consultation with Narrabri Shire Council.</p> <p>NSW Natural Resources Access Regulator (NRAR)</p> <ul style="list-style-type: none"> Ongoing consultation regarding the surface water management system. 	<p>ACTION 5 – HR to provide map with ownership</p>
<p>6.</p>	<p>Company Reports and Overview of Activities by Boggabri Coal</p> <p>Operations Update</p> <ul style="list-style-type: none"> Budgeting 6.8m tonne of railed product. Performance year to date has been impacted by higher than budgeted rainfall and high absenteeism, partially due to COVID. <p>A discussion was held between CR, SD and MN regarding employment at the mine. Firstly, there are about 20 to 25 operator roles and about 18 support positions available at the moment. Finding people and keeping people is problematic. The mine seeks to fill operational roles through a combination of direct channels and third party labour providers.</p> <p>In response to a question from MN as to whether the mine has a target of employing 3% indigenous people out of the total number of staff employed, SD observed that it's traditionally not something we measure or have asked for. We haven't had targets.</p> <p>RG observed that all industries seem to be having difficulty filling employment gaps.</p>	<p>ACTION 6 – SD to provide employment contact details for CR</p>

SD – We also have a problem attracting people to the Gunnedah Basin, as we are competing with the Hunter Valley which has picked up again. We have a New to Industry program running at the moment, and we have selected 30 new people who have never worked in a mine who we can train to operate in around 12 weeks

CR – How do you source those?

SD – Advertise through Seek, the press (including local newspapers) or on the radio. We are looking for local people.

CR – Do you bus people?

SD – No we don't. We have contemplated it but there doesn't seem to be a demand for it here.

Completed Tree Clearing

HR noted that in 2022, clearing is now complete. A total of 17.77 ha was cleared.

RD – Can you please confirm the animals killed, injured or relocated like bats, lizards, snakes, nests with eggs or hatchlings? Numbers for each particular species and how they were affected? If any are injured over the past clearing period, has the project ever contacted WIRES.

HR described the process to minimise the potential for harming animals during the tree clearing project. Ecologists from WSP are sent out; they have been working with the mine for 16 or 17 years and understand the project. The ecologist goes out and does a pre survey, attempting to rescue wildlife and mark any habitat trees. Every machine (for clearing) has two ecologists guiding it. It's a very careful procedure and very diligent. After the under clearing has taken place – mine staff wait 48 hours and then tap the trunk before gently lowering the tree to the ground. The ecologists inspect the tree, and they rescue any animals.

Exploration Update

15 of 64 holes have been drilled to date in 2022 (see relevant slide for further detail).

EOH – So that 16 of the 64 holes drilled, does that mean you are behind.

HR – No, that is the amount drilled to date. We expect to complete all 64 holes this year.

2021 / 2022 Archaeological Salvage Program

HR described the process that the mine implemented to salvage artefacts.

HR – Back 16 years ago, we had archaeologists come out and do an assessment of the whole area, that identified BC54 as a site where artefacts were present. This prompted the need for an archaeological salvage program the scope of which was guided by the Cultural Heritage Management Plan, with the archaeologists bound by the Plan's standards. Had to put lots of resources in to do this. Had about five or six archaeologists on rotating rosters. Up to 15 RAPs were involved in the digs in that area. The area was dug up by hand, taken to sieves to then determine if there was anything

ACTION 7 – HR to provide a list of animals killed, injured or relocated

of significance. If so, it would be tagged and then they would store those artifacts. They dug one metre by one metre, and if they found any artefacts, they would make that area bigger and bigger etc. Program went for several months. It has been observed that water appeared in the upper reaches of the area and water helped local people to make tools. People were coming there for some reason, and it seems to be a tool making area that was used for a long period of time.

MN – So you had 15 RAPs per day.

HR – On average we probably had about 12 people.

MN noted that the reality is that was a camp area, and they didn't just come down and make tools. They had a water source and so it would have been a settlement. Was it clay as there could be ovens? They build a canopy over it. Its heat treated and built over the top with clay. If a tree burnt out that was in clay, it turns to brick. It was a camp area. He also noted that as it is a couple of kilometres from Maules Creek, which is also significant because of the linkage, making it a town.

In response, HR stated that the mine didn't find anything like ovens, and we didn't find ash. They found a grinding groove for tool making but no actual tools. We didn't find any evidence of camps. People went there to do something, and they may have done other things. We did get a film crew out there as well. The film clip is still in production.

EOH – What is the process after “bagged and tagged”?

HR – We have to come up with a relocation place – a resting place for these artefacts. We've been negotiating and discussing with RAPs with finding a place.

Modification 8 Update – proposed amendment

SD notified members that an amendment is being sought to the MOD8 Modification Report for the following reasons:

- Further consideration was given to the submissions received during the exhibition period.
- The mine planning information used was based on mine planning studies completed in early 2020. Since this time, further refinement of the mine schedule has been undertaken, which has resulted in a revised mine plan which now has mining to the lower seams commencing in 2025.
- This has the impact of reducing the original life of mine extension from 6 to 3 years.

The core elements of the existing mining operations, as stated in the MOD8, will remain the same. Hence, there will be no change to:

- Project, or the Mine Disturbance, Boundary (except for disturbance required for the fauna movement crossing).
- Open cut mining method, hours of operation, the existing mine infrastructure and / or site access.
- Rehabilitation objectives for the Conceptual Final Landform Design.

ACTION 8 – HR to report back if the traditional owners were RAPs

	<p>SD noted that DPE approved proposed amendment process in April 2022. There is now a new submission date proposed for October 2022. At this time, the Amendment Report (including updated specialist studies) plus the Response to Submissions Report will be lodged with DPE. All information presented to date demonstrates an equivalent or reduction in mine parameters from that previously assessed within the original Modification Application.</p> <p>SD – The works will not start until 2025. Requires an amendment to the existing one, which will be submitted in October with hopeful approval by March 2023. So less than the previous plan. RD – What are the changes to that Plan? What will happen to the dam? SD – We have delayed the point of mine to go deeper from 2023 to 2025. The end of the life of the mine as a consequence will be 2036. HR – the dam will be mined out. The new dam is to be established. We have to consult with the CCC and the regulators.</p> <p>MN – How deep are you actually going? Depth today and then what you’ll be going to. SD – Believe it is 150 metres to 300 metres but will confirm and report back at the next meeting.</p>	<p>ACTION 9 – SD to report back on depth of mining proposed</p>
<p>7.</p>	<p>General Business</p> <p>Biodiversity Offset Areas</p> <p>HR noted that 70,000 tubestock ordered for tree planting in 2022 on ‘Goonbri’, ‘Mallee’ and ‘Myall Plains’ offsets. To commence in June. Inspection of all tree planting areas to be conducted by RAPs prior to ground preparation. The annual biodiversity monitoring activities that are currently taking place are:</p> <ul style="list-style-type: none"> ○ Autumn box gum woodland monitoring, stream and riparian vegetation health assessments and terrestrial groundwater dependent ecosystems surveys (completed mid-May). ○ Targeted threatened bird surveys (commencing end of May). <p>HR – We had some threatened bats, which were reported in our Annual Report. He was not sure if the bat species was one of the about 15 microbats that RD had observed has been recorded, locally, but it’s the first time it has been recorded by the mine.</p> <p>Housing VPA Update</p> <p>Initial discussions have taken place with council ahead of formal application. Location for initial two houses provisionally identified. Next step, detail design and planning application. A discussion on housing then resulted.</p> <p>RG – Something that Boggabri needed and now they have it. Some young staff going in as well which is great news. SD – Yes, it’s not occupancy that is the problem but getting the staff.</p>	

MN – How many houses were removed to build.
SD – Two houses which left 8. We have \$2 million in the budget for construction. Possibly four homes this year. Need further consultation with Council.
CR – Those houses are they for Idemitsu employees?
SD – Yes, we would like to attract people to the area. We’re building 3-bedroom type accommodation. We have a number of blocks that might be suitable for housing.

Early Learning Facility (ELF) – Approaching one year of operation. 85% occupancy, limiting factor is staffing numbers. Open day planned for 26 June 2022.

Sponsorship 2022

- Formal process for reviewing and approving requests. Standard application form.
- Sponsorship committee meets monthly to consider applications.

SD – We are funding applications that provide a community benefit. There is a criteria for this. Generally, more for things in the Boggabri area. Application form says who to send it to. The HSECT Manager, the Commercial Manager and one of the administrators and myself do the reviews. Can send me an email.

EOH – Asked about the bird surveys and the potential for local groups to get involved?
HR –We’ve tried to encourage groups to work with our ecologists to assist them and to participate. We have some of the best ecologists. So, possibility for Wando to do the same. Contact us to ensure no risk to health and safety. We share our monitoring data in and around mine and our biodiversity offsets as well.

RD – Re the tyres. I’d like to get a map of where the tyres have been buried and the possible sites, they will be buried in. Number and the tonnes at each burial site, too? If there are any issues years down the track, people will know once the mine site has gone exactly where to find them etc.
MN noted that there may be news regarding recycling opportunities soon.

HR – We have provided the Monitoring Report a week in advance. Any feedback, thoughts or questions?
MN – You used to have a report on noise and dust levels.
HR – I was presenting the same data and there wasn’t much interest which is why we sent it out earlier?

DR – Asked everyone to read those quarterly monitoring reports prior to the meeting. That gives us a chance to free up that time for better discussions.

MN – I’m upset with the protocol of what happened around the archaeological areas and that they aren’t just tool making areas.

ACTION 10 – HR to provide exact numbers of tyres buried, locations etc

ACTION 11 – HR to provide a copy of the noise and dust data

	<p>HR – Said to MN we have done detailed investigations with numerous archaeologists. We’ve put in numerous resources. MN – I understand that as well. I know you have to do your job. HR – Angela has been our archaeologist since 2010. We have thrown a lot of resources to this. We’ve spent several hundred thousand dollars on this, so we can do it properly. The RAPs – this is who we have to use. If anyone else wants to come out, we will be happy to facilitate it. We have to discuss where to place the artefacts. MN – Those artefacts belong on Country and need to go back with the use of those GPS coordinates to ensure they go back insitu. HR – We are deciding on which options to take with our RAPs. MN – They have no voice though. Once you’ve finished the mine, they are obligated to go back to the location where they were found. HR – That is an option for us. We’ll consult with RAPs.</p>	
8.	Next meeting date – Next meeting Thursday 25 August 2022 at 9:30 am . Location at the coal mine. Short meeting to be followed by a site tour.	

Meeting Closed at 11:43 pm

Appendix 1: Actions

Page No	Action No	Description	Date Raised
1	1	DR to write a letter of thanks to Pat Murphy	26 May 2022
1	2	HR to include a slide re tyres	26 May 2022
2	3	DR to keep in contact with EPA re the NRAQAC and keep CCC informed	26 May 2022
2	4	SD to confirm the number of properties with multiple ownership	26 May 2022
3	5	HR to provide map with ownership	26 May 2022
3	6	SD to provide employment contact details for CR	26 May 2022
4	7	HR to provide a list of animals killed, injured or relocated	26 May 2022
5	8	HR to report back if the traditional owners were RAPs	26 May 2022
6	9	SD to report back on depth of mining proposed	26 May 2022
7	10	HR to provide exact numbers of tyres buried, locations etc	26 May 2022
7	11	HR to provide a copy of the noise and dust data	26 May 2022



CCC Meeting May 2022

26th May 2022



Agenda

May 2022



- Confirmation of record keeping
- Apologies
- Declaration of pecuniary or other interests
- Confirmation of minutes
- Business arising from previous minutes
- Correspondence
- Company reports and overview
- General business
- Next meeting

Business Arising from Previous Minutes

Action	Action to be done	Status	Comments
1	DR to check previous minutes and update water unit error from megalitres to gigalitres	●	Email response
2	HR to find out if there are privacy issues associated with ASCF Minutes	●	Email response
3	HR to provide an update on what the addendum contained	●	Email response
4	SD to confirm exact numbers of lost days due to covid	●	Email response
5	HR to confirm how many tyres have bene buried before and since the new EPL conditions.	●	Email response



Correspondence





Correspondence

NSW Department of Planning & Environment

- Site visit conducted 16th March, inspected tree clearing activities and site operations
- Letter requesting extension of time for submission of 2022 Annual Review
- Annual Review submitted
- Discussed Namoi Region Air Quality Monitoring Network
- Traffic Management Plan submitted for approval
- Reported blast exceedance from 30th April



Correspondence

Environment Protection Authority (EPA)

- Monthly noise reports submitted
- EPL12407 Annual Return submitted
- Reported blast exceedance from 30th April

Biodiversity Conservation Trust

- Consultation re: Conservation Agreements
- Submitted initial 18 conservation agreements
- Site visit of Biodiversity Offset Properties conducted in March



Correspondence

Forestry Corporation of NSW

- Continuing consultation about access/compensation agreements

Department of Agriculture, Water & Environment

- Condition 28 Audit report submitted

Narrabri Shire Council

- Meeting held to discuss Traffic Management Plan

NSW Natural Resources Access Regulator (NRAR)

- Ongoing consultation regarding the surface water management system

 idemitsu
Company Reports and Overview



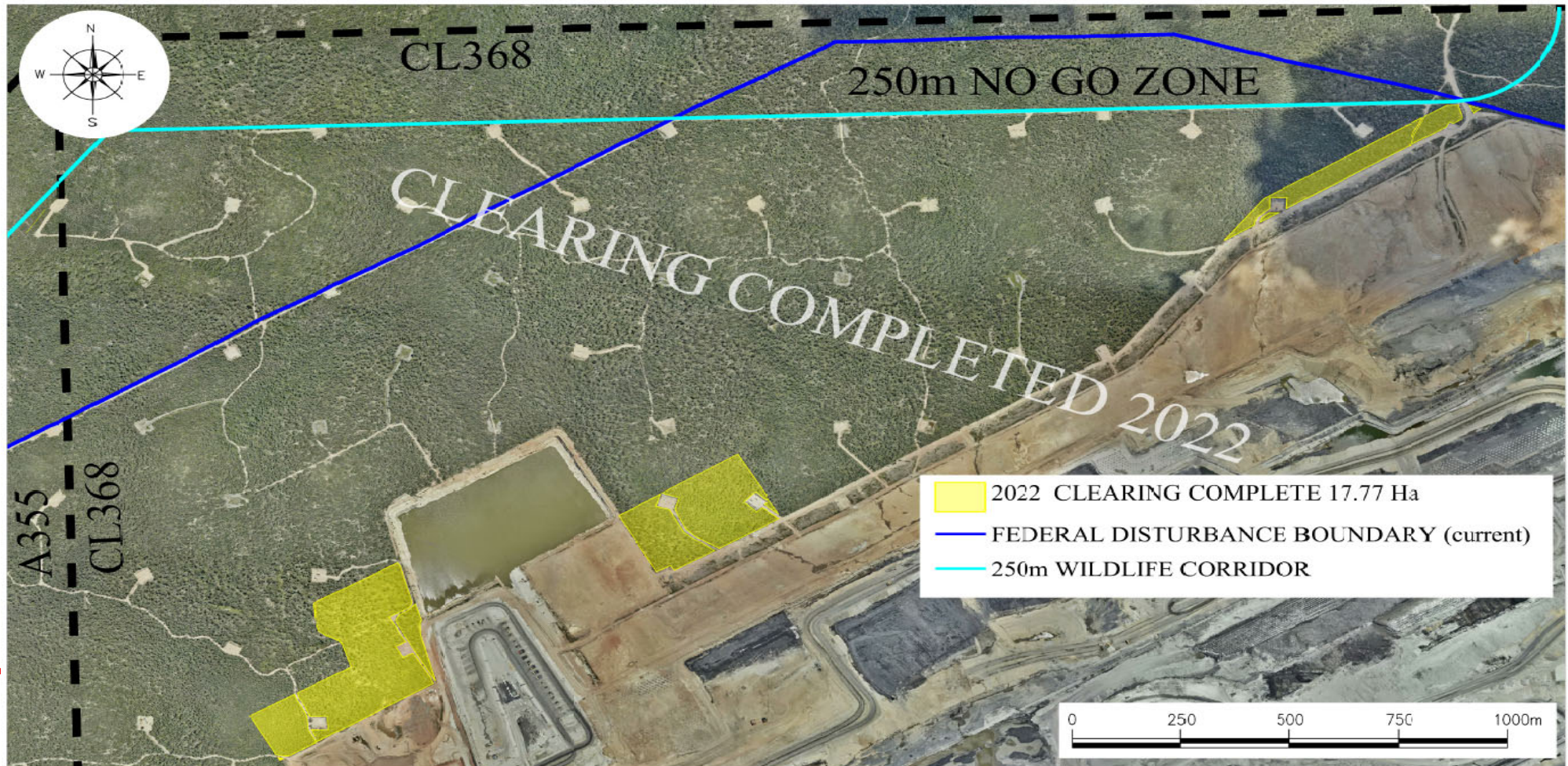


Operations Update

- 2022 is our 16th year of operations
- Budgeting 6.8m tonne of railed product
- Performance year to date has been impacted by higher than budget rainfall and high absenteeism, partially due to Covid



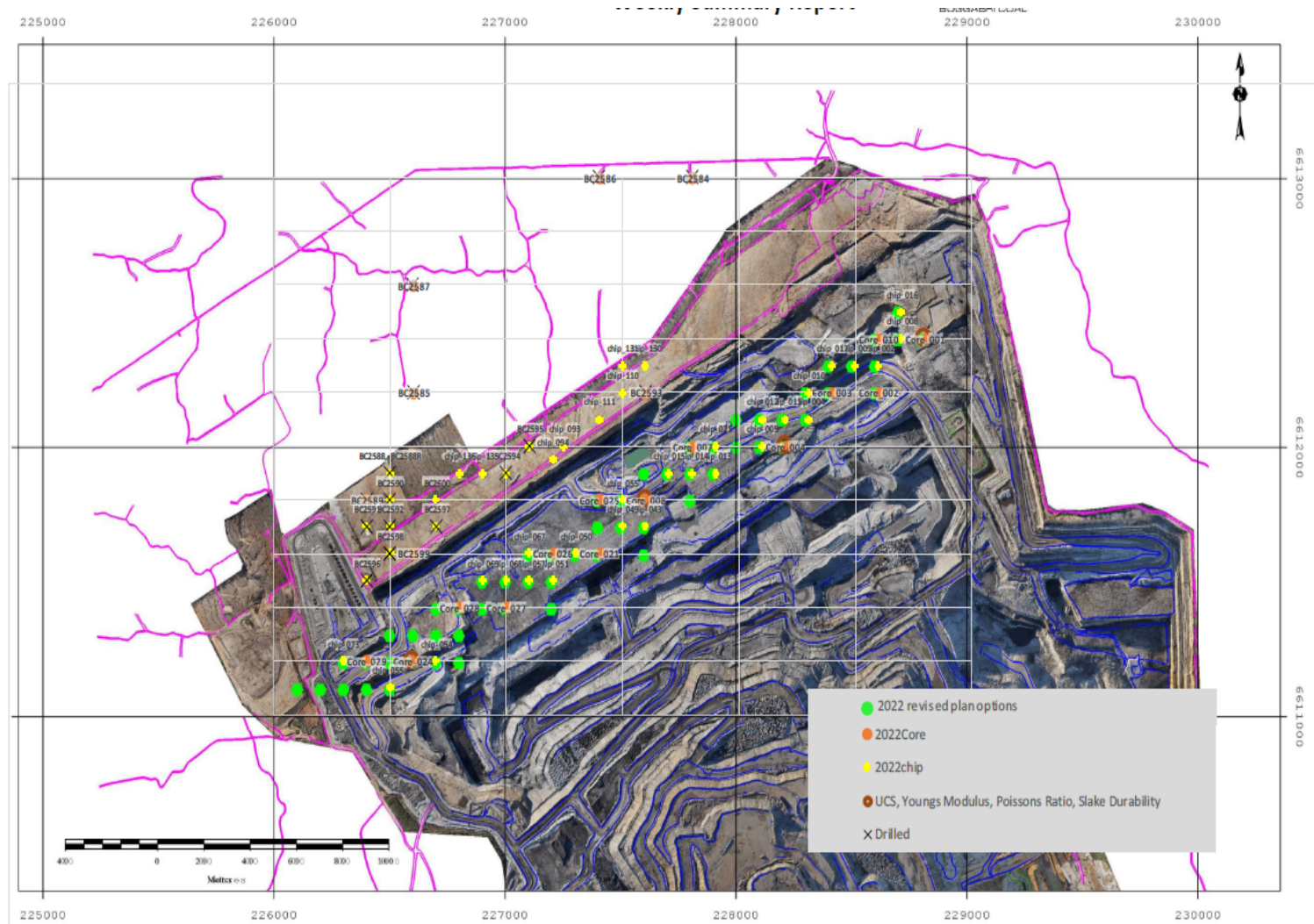
2022 Completed tree clearing





Exploration Update

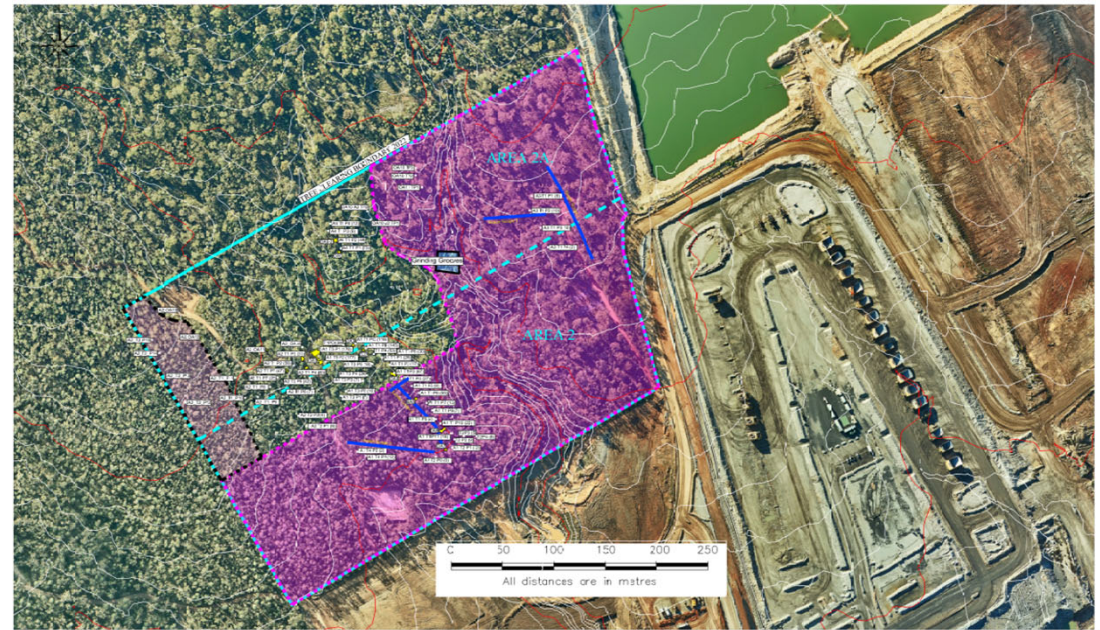
- 15 of 64 holes drilled to date in 2022.
- Green holes – 2022 coal exploration
- Orange holes – 2022 core
 - Structural quality and geotechnical data.
 - Coal quality
- Yellow holes – 2022 chip
 - Structural data
- Red holes
 - Cores collected and lab tested to inform mine design standards





2021/22 Archaeological Salvage Program

- Aboriginal Stakeholder Consultation Forum meeting held on 16th February & 11th May 2022.
- The 2021/22 program consisted of surface collection, test pitting, open area excavation and grader scrapes
- Geomorphologists attended site to assist in explaining historic landscape and landform use



				QUALITY RECORD REVIEW: NAME: DATE: SCALE: See Bar Scale DRAWN: DATE: DATE:	FILE # BOB Arch Stage 1 Clus Aug 2021 - western area 050522a.dwg PLOT # 1 Arch Stage 1 Clus Aug 2021 - western area 050522a.pdf JOB # 884 ORG # FILE SIZE: A3	Boggabri Coal Operations Arch Salvage Works 2021-2022	DELIVERED TO: 05/05/22 BY:
R/O: REFERENCE: DATE:	Conditions of the Quality Record can be found in the Quality Plan. The Quality Plan is available on the project website. All distances are in metres. A contour interval of 2m is used.		LEGEND [Symbol] TEST PIT LOCATIONS [Symbol] OPEN AREA EXCAVATIONS [Symbol] SURFACE COLLECTION [Symbol] GRADER SCRAPES				



Modification 8 Update

Reasons for proposed amendment

BCOPL is seeking to amend the MOD8 Modification Report (dated July 2021) based on the following reasons:

- The mine planning information which was assessed within the Modification Report was based on mine planning studies completed in early 2020. Since this time, further review and refinement of the mine schedule has been progressively undertaken to reflect market demand and site efficiency in relation to production and fleet equipment usage.
- In late 2021, revised LOM modelling and financial assessment resulted in the need to reschedule the proposed step down in mining depth to the Templemore seam until 2024 and with improved production, the mine scheduling determined the need to only extend the LOM for a further three years from approved.
- In addition, further consideration was given to the submissions received through the 2021 public exhibition period as well as the request for further information received from the then Department of Planning and Environment.





Modification 8 Update

Proposed amendment

The core elements of the existing mining operations approved under SSD 09_0182 (as modified by Mod 7), as stated in the Modification Application MP09_0182-Mod-8, will remain the same.

MOD 8 (as proposed to be submitted) will not change the following aspects of BCM:

- Project Boundary or the Mine Disturbance Boundary (except for disturbance required for the fauna movement crossing)
- Open cut mining method, including maximum annual product coal production rates;
- The existing mine infrastructure and/or site access;
- Hours of operations;
- Rehabilitation objectives for the Conceptual Final Landform Design.

Mine parameter	July 2021 MOD8 Application submission	2022 proposed MOD8 Amendment
Disturbance footprint	Within the currently approved Mine Disturbance Boundary.	No change
Duration of proposed extension	An increase in the life of BCM by 6 years	Reduction of 3 year duration and associated tonnage.
Annual ROM	An increase in the peak annual ROM coal production rates from a maximum of 8.6 Mtpa up to a maximum of 9.1 Mtpa to achieve mining efficiencies, noting that an average of up to 8.6 Mtpa of ROM coal will still be maintained.	No change
Construction of a fauna movement crossing		No change
Final landform		No proposed change to rehabilitation criteria, however will be addressed as part of the Amendment Report due to reduction in overburden material.



Modification 8 Update

Current status

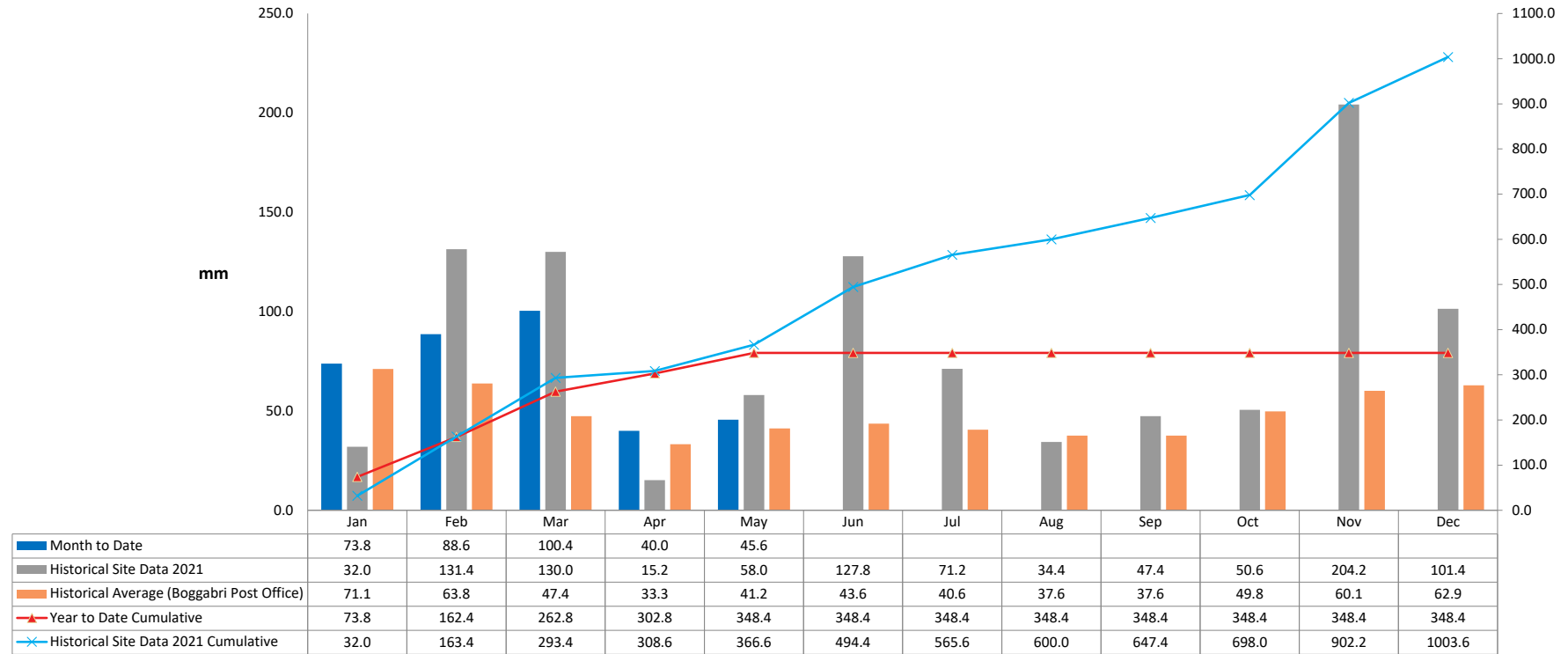
- DPE approved proposed amendment April 2022.
- New submission date proposed October 2022. At this time, the Amendment Report plus the Response to Submissions Report will be lodged with DPE.
- Updated specialist studies (Air quality, noise, groundwater etc) currently underway to assess life of mine amendment.
- All information presented to-date demonstrates an equivalent or reduction in mine parameters from that previously assessed within the Modification Application (MP09_0182-Mod-8)



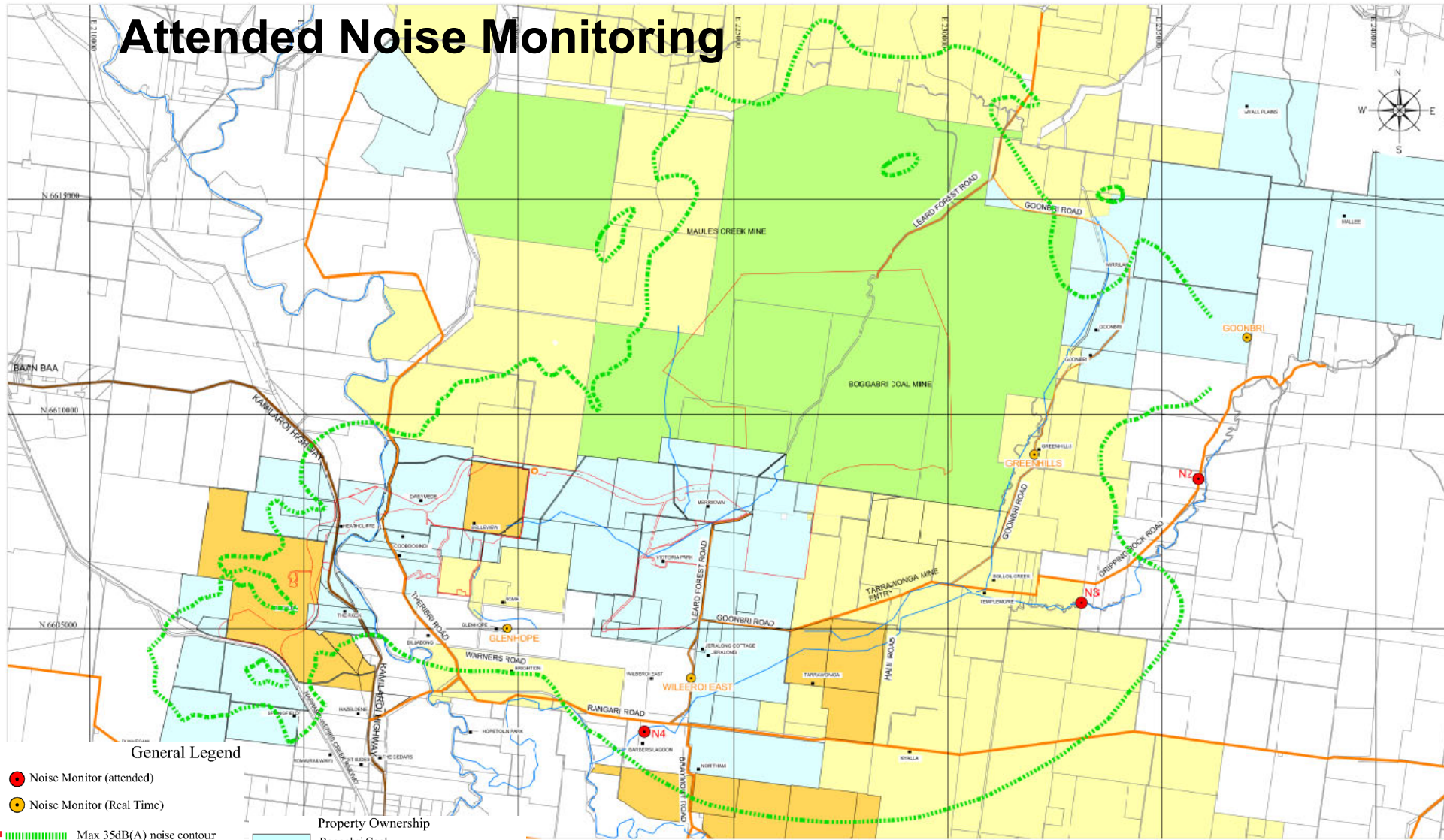
SE Rehab update



YTD Rainfall 2022



Attended Noise Monitoring



General Legend

- Noise Monitor (attended)
- Noise Monitor (Real Time)
- ⋯ Max 35dB(A) noise contour
- Residence / Property name
- Creek / River
- Roads
- Kamilaroi Highway
- Property Ownership
 - Boggabri Coal
 - Boggabri Coal & Whitehaven Coal Mining
 - Whitehaven Coal
 - State Forest
 - Boggabri Coal Project Approval Boundary



Attended Noise Monitoring

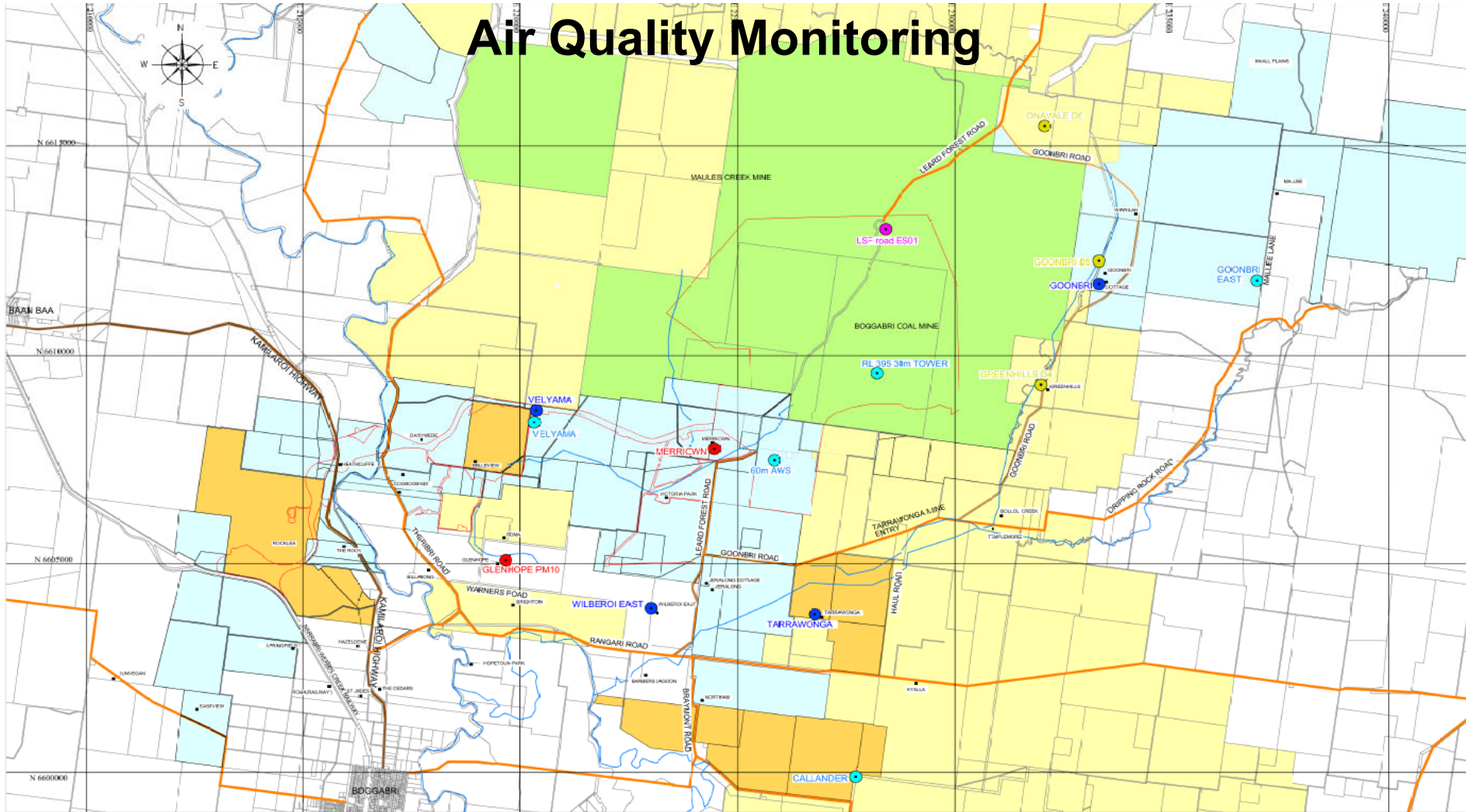
Attended Noise monitoring location	LAeq, 15min Impact Assessment Criterion	Apr - 21	May-21	June-21	July-21	Aug-21	Sept-21	Oct-21	Nov-21	Dec-21	Jan-22	Feb-22	Mar-22	Apr-22
Sylvania	35	IA	IA	IA	IA	IA	IA	IA	IA	IA	IA	IA	IA	IA
Picton	35	IA	IA	IA	IA	IA	IA	IA	<25	IA	IA	IA	IA	<25
Barbers Lagoon	35	IA	IA	IA	IA	IA	IA	IA	<20	<20	25	IA	IA	IA

IA: No site noise was audible at the monitoring location

There were no exceedances of EPL or Project Approval criteria during the monitoring. Boggabri Coal has not had an Attended Noise Monitoring exceedance since 2014.



Air Quality Monitoring



REV	REVISIONS	DATE

General Legend	
	Meteorological Station
	TEOM
	E-Sampler
	Dust Monitoring
	High Volume Air Sampler
	Residence / Property name
	Creek / River
	Roads
	Kamilaroi Highway

QUALITY RECORD			
REVIEW	NAME	SIGNATURE	DATE
DRAWN	MCARDNER		23/21
DWG CHECKED BY			
Property Ownership			
	Boggabri Coal		
	Boggabri Coal & Whitehaven Coal Mining		
	Whitehaven Coal		
	State Forest		
	Boggabri Coal Project Approval Boundary		

SCALE
See Grid (500m)

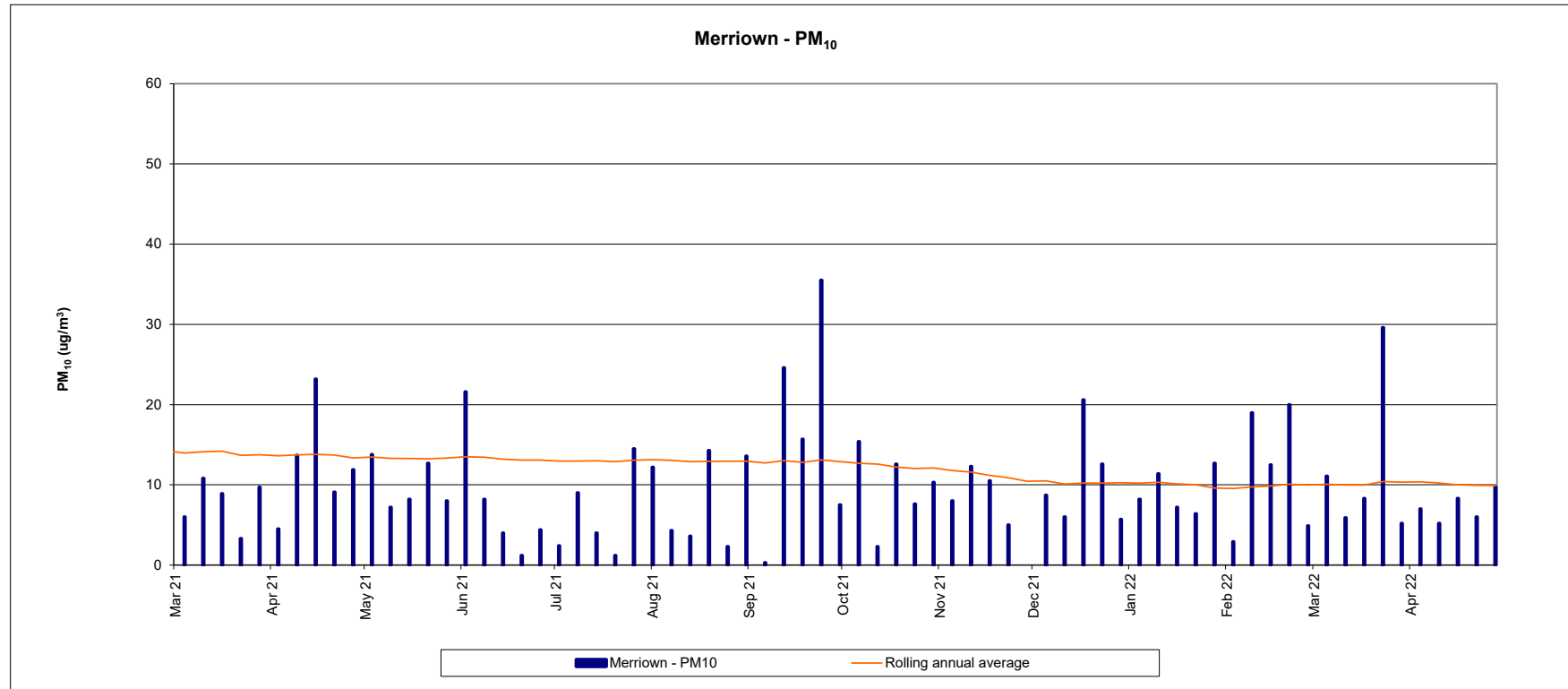
FILE REF: Air Quality Monitoring locations 230821.dwg
PLOT FILE: Air Quality Monitoring locations 230821.pdf
ORIG. FILE SIZE: A3

Boggabri Coal Operations

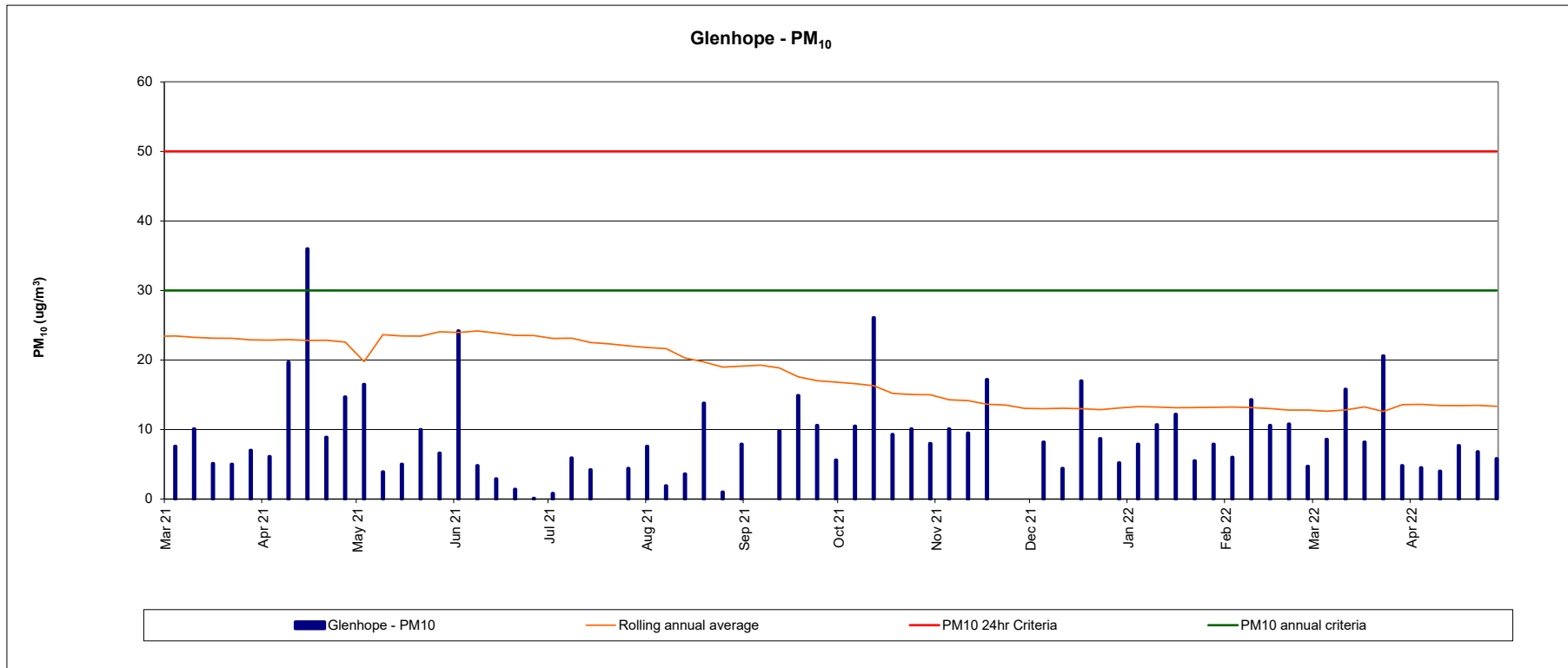
Air Quality Monitoring Locations

DRAWING NO: 230821b									
REV									

Air Quality Monitoring



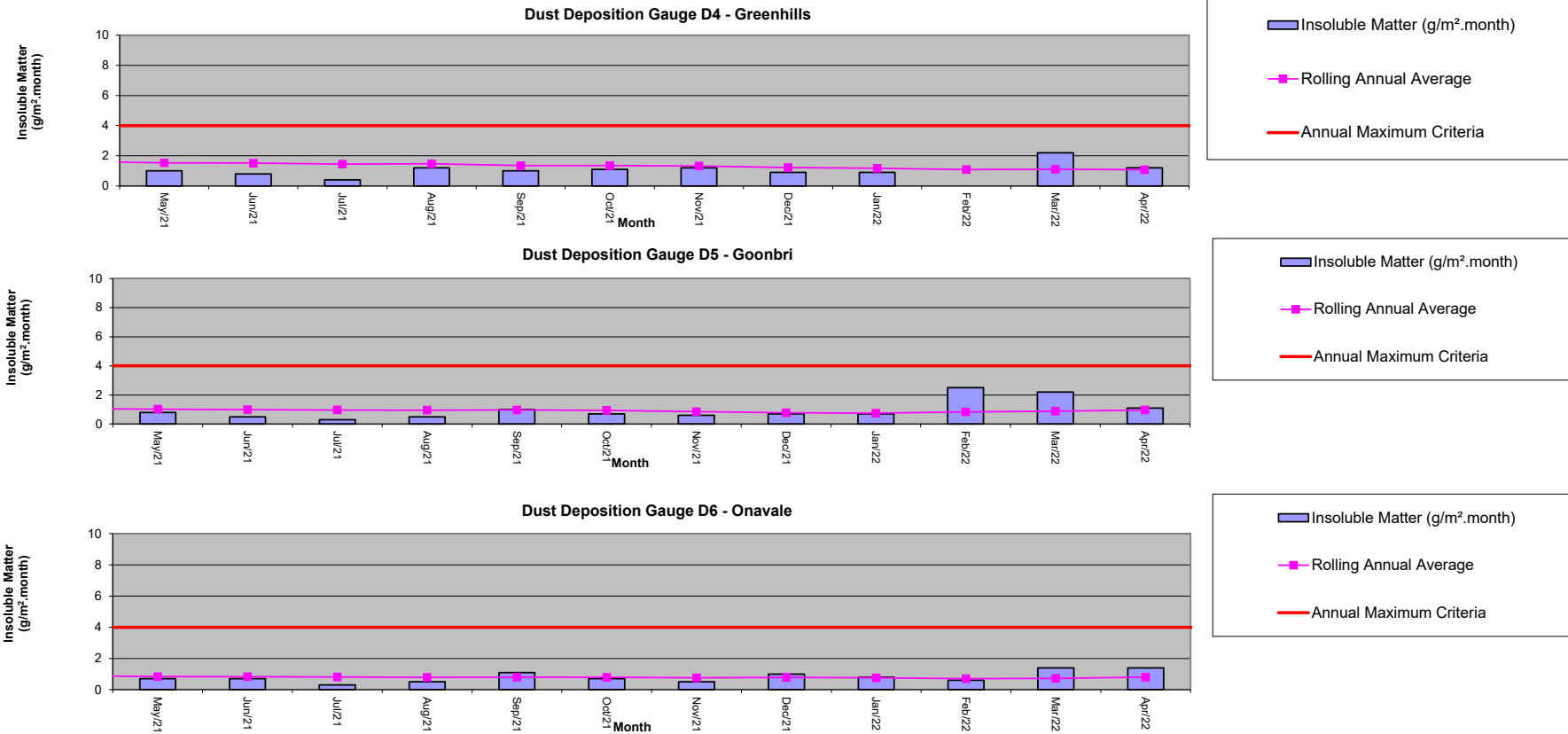
Air Quality Monitoring



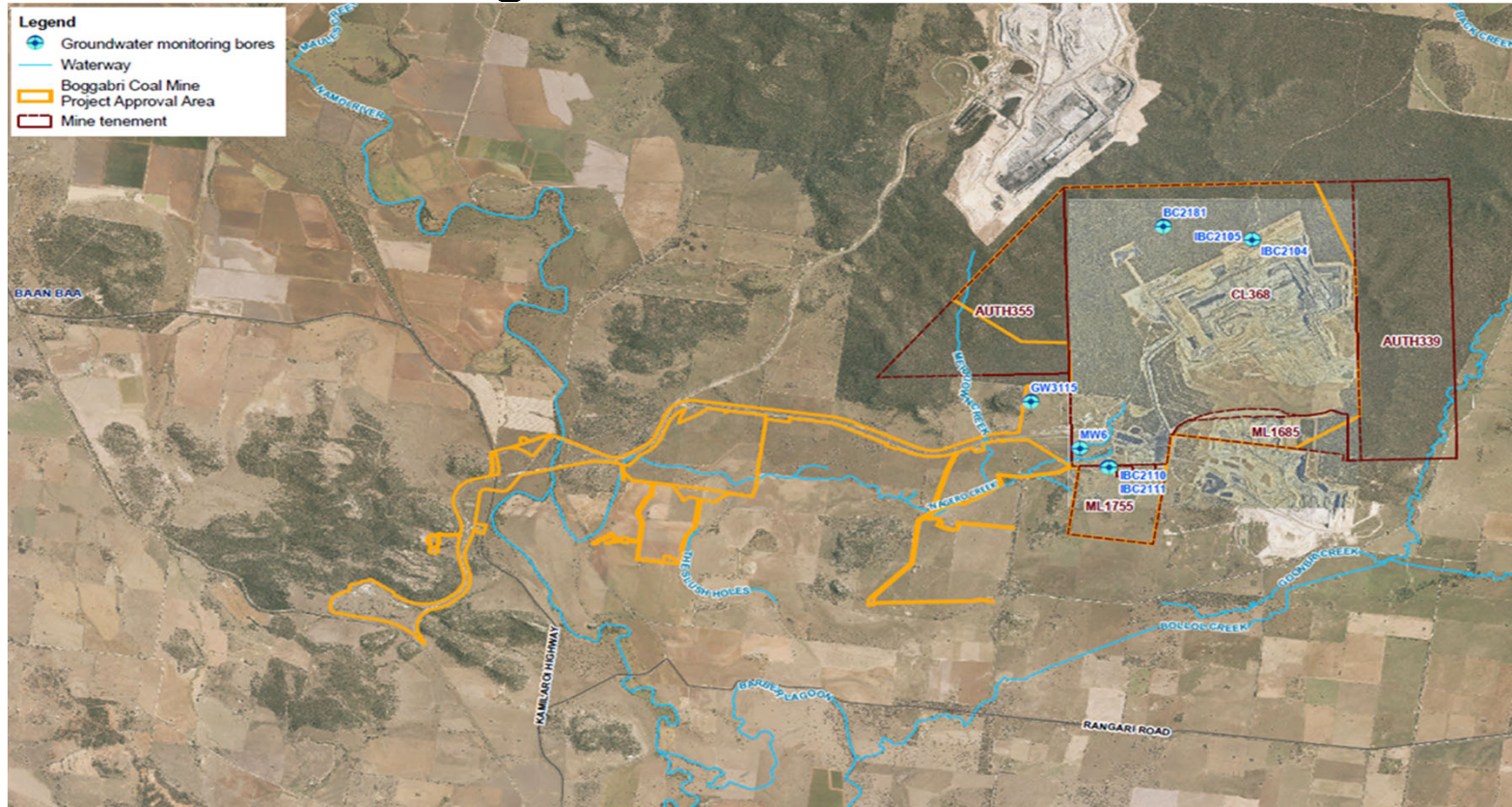


idemitsu

Air Quality Monitoring

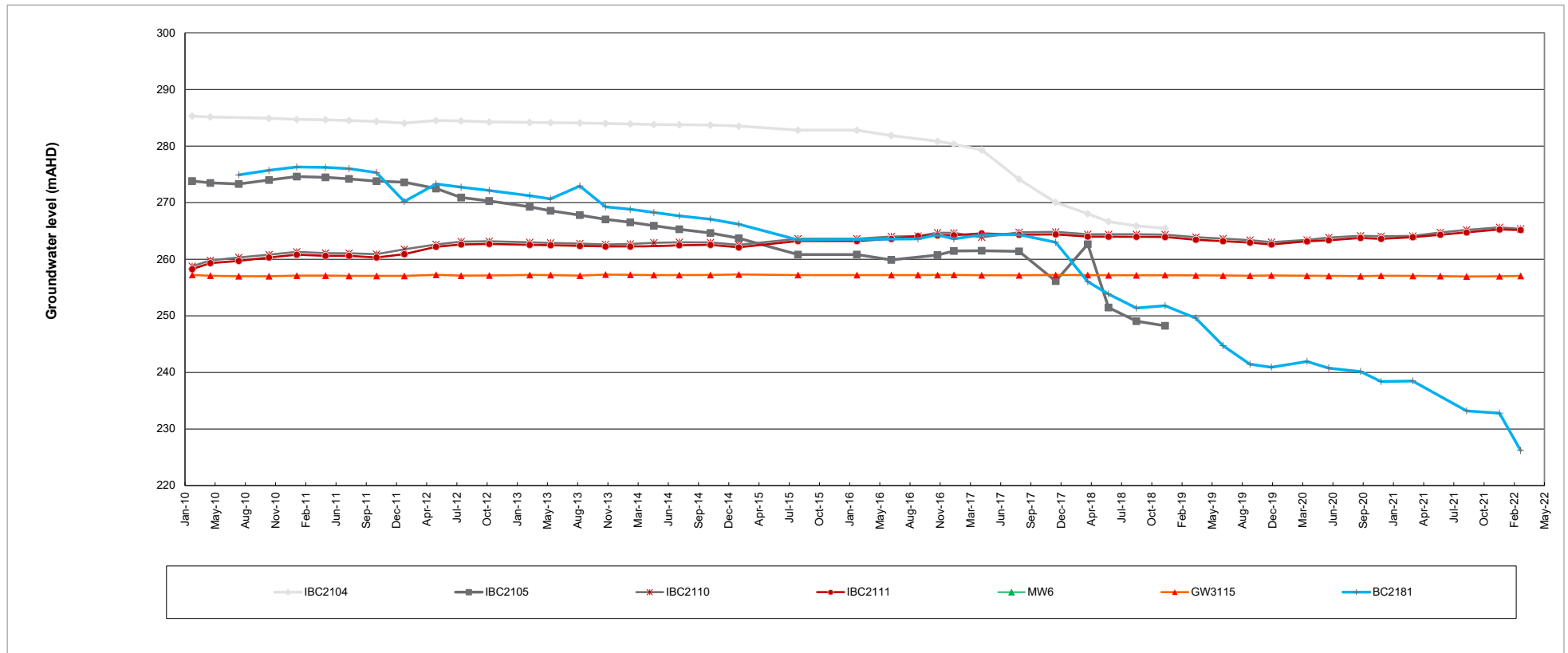


Groundwater Monitoring





Groundwater Monitoring

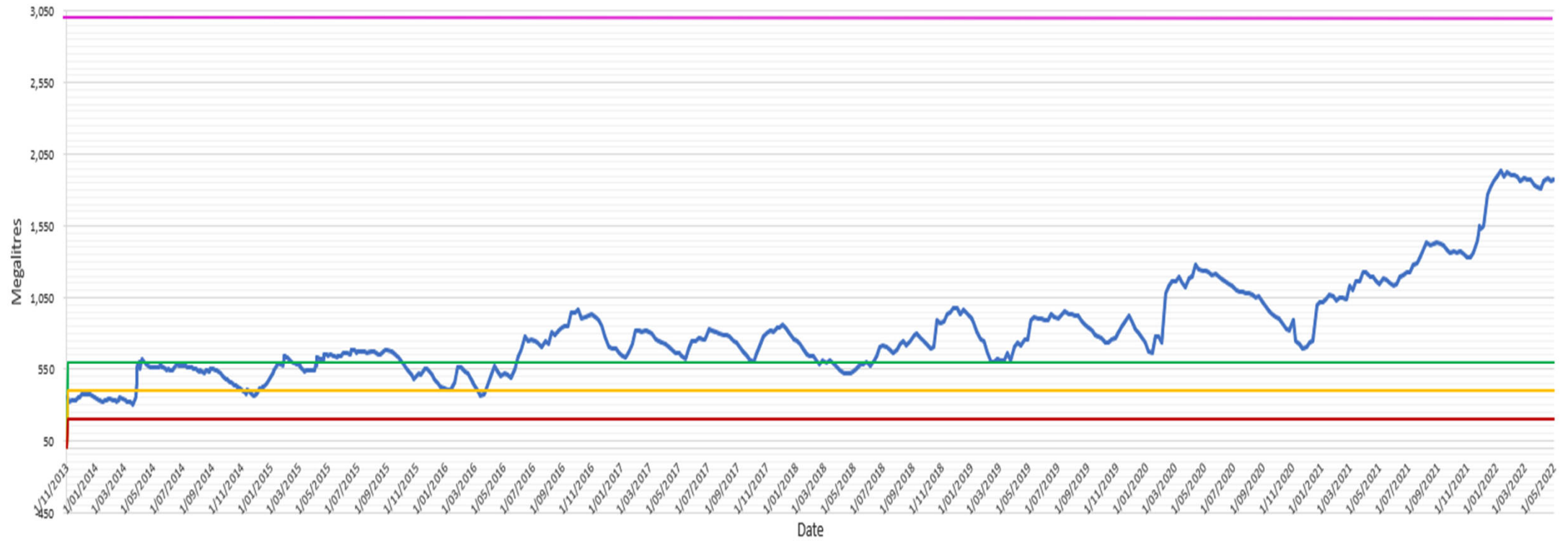




Bore Extraction Since Previous Meeting

BCOP has extracted 33.18 ML from its borefield since the 24th February 2021

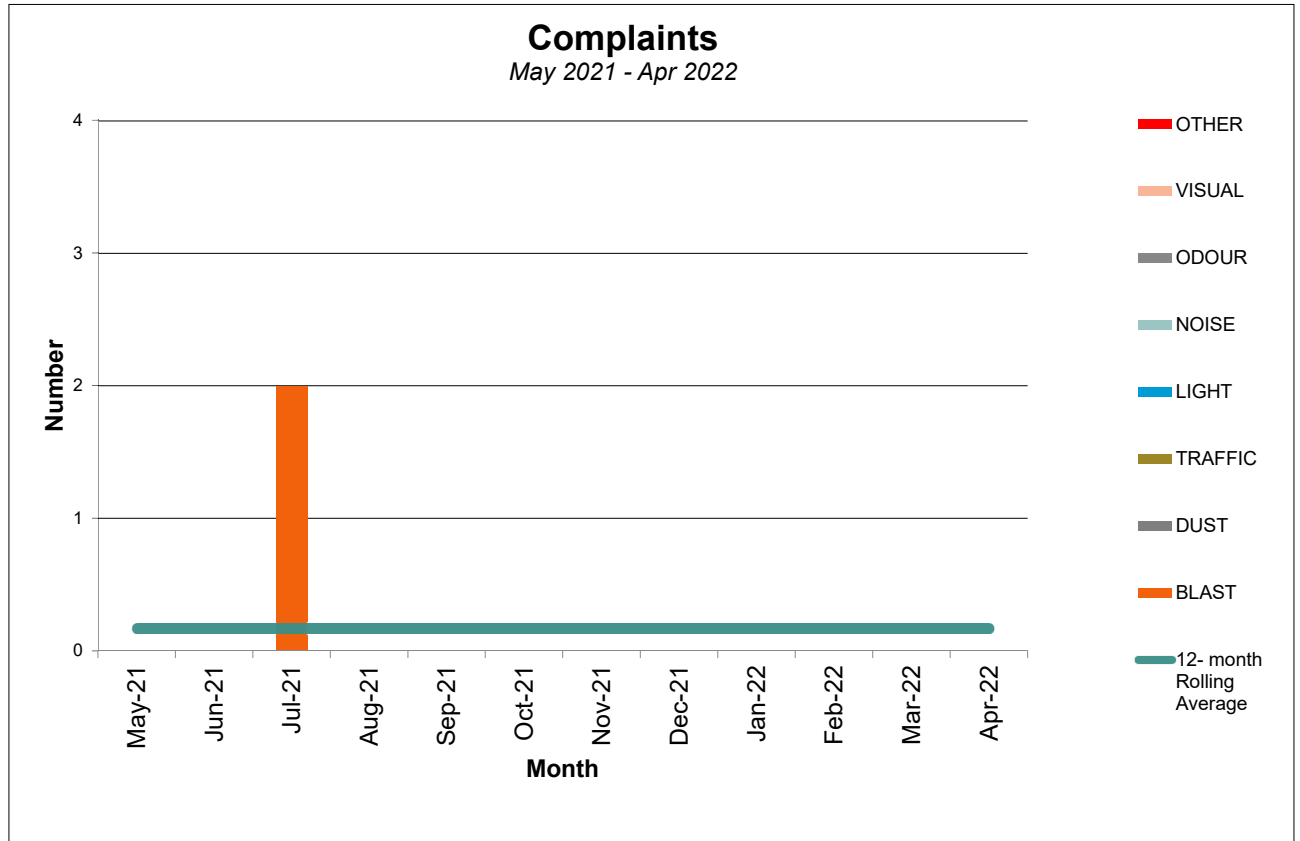






Community Complaints

No complaints received since February meeting



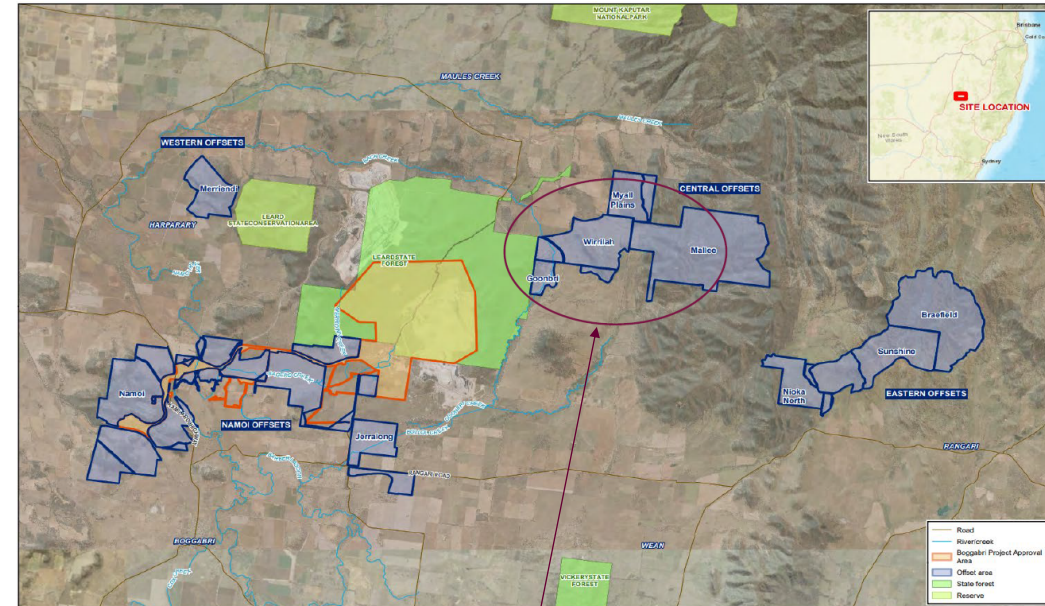


General Business



Biodiversity Offset Areas

- Fencing program ongoing
- 70,000 tubestock ordered for tree planting in 2022 on 'Goonbri', 'Mallee' & 'Myall Plains' offsets. To commence in June. Inspection of all tree planting areas to be conducted by RAPs prior to ground preparation
- Annual biodiversity monitoring activities
 - Autumn box gum woodland monitoring, stream and riparian vegetation health assessments & terrestrial groundwater dependent ecosystems surveys (Completed mid-May)
 - Targeted threatened bird surveys (Commencing end of May)



2022 tree planting areas

Housing VPA update

Housing

- Initial discussions with council ahead of formal application
- Location for initial two houses provisionally identified
- Next step, detail design and planning application

Early Learning Facility (ELF)

- Approaching one year of operation
- 85% occupancy, limiting factor is staffing numbers
- Open day planned for 26th June



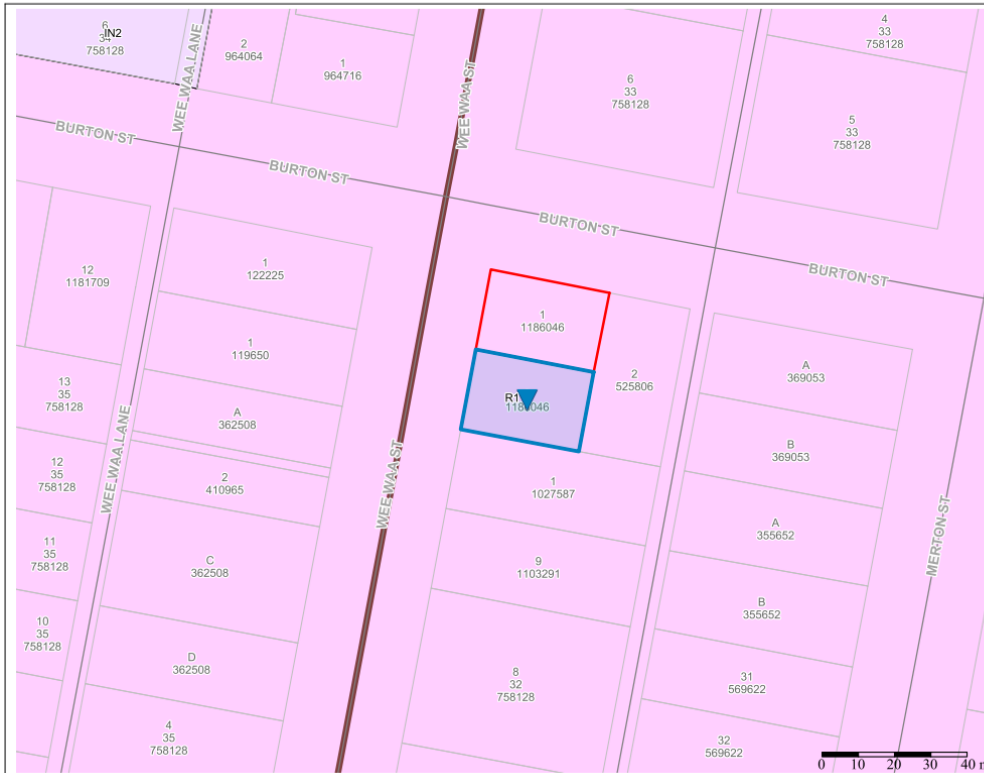
NARRABRI SHIRE
DISCOVER THE POTENTIAL

46-48 Maitland St, Narrabri NSW 2390
(PO Box 351)
Tel: 02 6799 6866 Fax: 02 6799 6866
Email: council@narrabri.nsw.gov.au

117 & 119 Wee Waa St BOGGABRI

This map is not a precise survey document. Accurate locations can only be determined by a survey on the ground.
This information has been prepared for Council's internal purposes and for no other purpose. No statement is made about the accuracy or suitability of the information for use for any purpose (whether the purpose has been notified to Council or not). While every care is taken to ensure the accuracy of this data, neither the Narrabri Shire Council nor the NSW Spatial Services makes any representations or warranties about its accuracy, reliability, completeness or suitability for any particular purpose and disclaims all responsibility and all liability (including without limitation, liability in negligence) for all expenses, losses, damages (including indirect or consequential damages) and costs which you might incur as a result of the data being inaccurate or incomplete in any way and for any reason.
© NSW Spatial Services 2019 © Narrabri Shire Council 2019.

Generated: 10/05/2022
Drawn by: henrymi
Scale: 1:1192 at A4
Projection: GDA94 / MGA zone 55



Parcel	
ID	169817362
Land Title	2/DP1186046
Acres	0.15
Hectares	0.06
Deposited Plan	Click Here
LEP Zone	R1 - General Residential: 100%
Lot Size	K - 550: 100%
Flood Chance	Not Affected
Sewer Diagram	
Dwelling Ent	1964-1966
Property	
Land ID	67381
Part Lot	FULL
Lot	2
Section	
Plan No	DP1186046



FRONT ELEVATION
SCALE 1:100 @ A1



AERIAL VIEW
NOT TO SCALE



FLOOR PLAN
2 x 3 BED + STUDY
 SCALE 1:100 @ A1



Sponsorship 2022

- Formal process for reviewing and approving requests
- Standard application form
- Sponsorship committee meets monthly to consider applications

2022 Sponsorship	YTD
Westpac Helicopter Partnership	\$ 30,000
Gunnedah Show	\$ 15,000
Maules Creek Campdraft	\$ 5,000
Narrabri Carp Muster	\$ 5,000
Boggabri Carp Muster	\$ -
Boggabri Rugby League	\$ 5,000
Manilla Show	\$ 2,500
Unallocated/Discretionary	\$ 14,435
Total	\$ 76,935





Next Meeting?

