

OVERVIEW	
Meeting	Community Consultative Committee
Date	14/05/2020
	Time 10.00am
Venue	Video Conference
Chairperson	David Ross
Attendees	Tim McDermott (TM), Hamish Russell (HR), David Ross (DR) Cath Collyer (CC), Ros Druce (RD), Mitchum Neave (MN), Robert Kneale (RK), Anthony Margetts (AM), Peter Forbes (PF), Richard Gilham (RG).
Apologies	Geoff Eather (GE), Stewart Dunlop (SD)
Next Meeting	13 th August 2020

ITEM	AGENDA
1	Apologies
2	Declaration of Pecuniary or other Interests
3	Confirmation of previous minutes
4	Changes to CCC Membership
5	Business arising from previous minutes
6	Correspondence
7	Company reports and overview
8	General business/questions
9	Next Meeting

DISCUSSION ITEMS
<p>1. Apologies: See above.</p>
<p>2. Declarations of Pecuniary Interests: DR – Declared he is paid a fee for his chairing services. RG – Declared that his property is located in the zone of affectation.</p>
<p>3. Acceptance of previous minutes: Endorsed</p>
<p>4. Business from previous minutes:</p> <p><u>Back up Representative</u> DR – Discussions have taken place with MN about a backup representative, MN to think about it. Trying to attract additional members to join CCC as members from ‘Sustainable Living Armidale’ haven’t been turning up. PF – Been in touch with Steve O’Donoghue from DPIE planning, will try to find another member.</p> <p><u>New Biodiversity Offset Agreement</u> HR – New date for registration of conservation covenant(s) noted in the recently varied Federal Approval is 15th December 2022.</p>

DISCUSSION ITEMS

Advertise jobs in the 'Green Flyer'

HR – All of Boggabri Coals vacancies advertised in 'SEEK'.

CC – Accepts BC stance to only advertise on 'SEEK'.

MN – Are organisations aware that Boggabri Coal advertises on 'SEEK'?

HR – 'SEEK' is a very popular website amongst job seekers.

MN – How do I access 'SEEK'.

HR – All online, search location as 'Boggabri'.

Completed Tree Clearing

HR – Explains figure on slide noting scale of 2020 tree clearing program.

TSR locations

HR – Explains figure on slide. No TSR's are located within Boggabri Coal owned property.

Progress compared to the 5-year plan

HR – Explains map and the difference between previous and current MOP.

ELF

PF – Waiting on a sewage connection sign off from council, construction should be starting shortly.

Koala Watering Project

HR – The koala watering units are currently being built, need to finalise locations.

PF – BCOPL will be looking for community involvement and input in the installation of the watering units. Building of the Koala watering units is expected to be finished in the next week or so.

5. Correspondence

DPIE – RFI request tree clearing program, Annual review was submitted.

DPIE Resources Regulator – MOP amendment A approved, issue raised during audit about overlapping petroleum exploration licence. Authority to undertake exploration activities in A355.

RD – Could you elaborate on the issues with the overlapping lease. What cooperation agreement would need to be put in place?

HR – Condition 9 of BC Coal Lease states BC must consult with anyone who has a lease overlapping any of BC leases. PEL001 is a Santos lease, there is a an overlap on CL368.

RD – was this in the wildlife corridor?

HR – No, it's to the east.

RD – Is there a map?

PF – **Will provide a map showing leases. Action**

RD – where is A355?

HR – PF will include in map.

DoEE – Federal Approval 'VARIATION OF CONDITIONS' approved on 26th February. Exploration queries

EPA – Monthly noise reports, EPL12407 annual return submitted.

Forestry Corporation of NSW – Negotiations continuing re access agreements.

DISCUSSION ITEMS

6. Company Reports & Reviews:

Noise monitoring

HR – No issues with noise monitoring. Real time noise monitor to be moved from the ‘Bellevue’ Property to the ‘Wilberoi East’ property and an additional monitor will be placed on the ‘Glenhope’ property. Both these properties are BCOPL’s closest privately-owned residences.

Air quality monitoring

HR – Air quality issues state wide late 2019 with dust storms. Reflected in site monitoring.

Air quality

HR – runs through slide. Explains February exceedances were not as a result of BCOPL activities.

Groundwater monitoring

HR – Explains standing water level recharge in graphs. BCOPL is not having a significant effect on bores in the alluvium.

RD – Where is ‘Wilberoi East’?

HR – Halfway between the mine and the Namoi River. **Action – To provide map of monitoring bores.**

MN – Is BCOPL pumping water from the river or helping other mines to do so?

HR – BCOPL is not taking water from the river. BCOPL is not involved in providing water to any other organisations, from any source.

Water storage on site:

HR – 1.2GL currently stored on site.

CC – Tarrawonga had big issues with a large rainfall event in February. Did BC have any issues?

HR – No dam issues, some erosion issues on the rehab and dumps but it was all contained in the disturbed area.

CC – No issues with runoff? Was it all contained?

HR – No damage to dams, all runoff was channelled into dams. Dams were big enough to capture all runoff.

MN – Could BCOPL provide a figure showing where runoff goes and where the dams are to capture it?

HR – Will provide figures. **ACTION – figure of runoff and dams diagram.**

YTD Rainfall

HR - Column graph

Water management plan revisions

HR – Updating water management plans to incorporate changes approved in MOP ‘A’. Also going to incorporate exploration activities in A355.

RD – So they will only be available to the public once the plans have been approved?

HR – Yes, they will be available on the website.

MN – In the revised plans, is connectivity between other mines allowed for?

HR – The Water Management Plan details BCOPL’s operation. The Water Management Strategy incorporates the 3 mines in the BTM complex.

DISCUSSION ITEMS

Complaints

HR - None in reporting period. None in 12 months.

7. General Business.

RK – Could the committee get a final copy of the minutes?

DR – Timing for minutes should be, 1 week after the meeting draft minutes to be sent out. Members have 1 week to give feedback. Final minutes to be sent out 2-3 weeks after meeting.

RG – Can hear more noise than usual coming from the mine.

HR – The weather conditions experienced at the moment convey noise easier and further.

RG – The traffic is worse on the back roads, should be for locals only.

PF – Will act on that feedback.

CC – Could RG bring that up at the joint CCC so all mines are aware.

RG – Will do.

MN – What were the decibel levels before and after noise attenuation was placed on the trucks.

PF – Sound power levels of 123db prior to noise attenuation. Now around 118-119db.

MN – Are there any TSR's in the mining area?

HR – No. There are no TSR's in the property the BCOPL has acquired.

MN – Once the ELF has completed construction, how long before houses will start being built in Narrabri and Boggabri?

PF – **ACTION: Find out when houses to be built post ELF.**

RD – Where do BC blasting contractors source explosives from?

PF – The blasting contractor is Orica, **ACTION: Find out where 'Orica' sources explosives.**

RD – Does BC source from the Shenhua explosives plant?

HR – Conducts no business with Shenhua

RD – Was there a blasting compound built?

HR – I believe so. Not at BCM.

AM – Focus for the last 2 months has been Covid-19. It has been a challenge. BCOPL has been subject of Covid-19 audit by regulators a few times in the last months. BCOPL will conduct risk assessments when easing out of site restrictions.

Meeting close: 11:13am.

8. Next meetings

14th May 2020

HR – Thanks everyone for the efforts in videoconferencing.

Actioned against	Action to be done
BCOPL	Provide a map showing overlapping leases CL368, A355, A339 and PL001
BCOPL	Provide a map of BCM's monitoring bores
BCOPL	Provide a figure of BCM's dams and runoff catchments
BCOPL	Determine state of plan for building houses in Boggabri and Narrabri post ELF
BCOPL	Determine where 'Orica' source their explosives from.



CCC Meeting May 2020

14th May 2020



Agenda

May 2020

- Confirmation of record keeping
- Apologies
- Declaration of pecuniary or other interests
- Confirmation of minutes
- Business arising from previous minutes
- Correspondence
- Company reports and overview
- General business
- Next meeting

Business Arising from Previous Minutes.

Actioned Against	Action to be done
BCOP	Update on the houses being built for Boggabri
BCOP	Consider advertising all vacant BCOP positions in a Boggabri Green Flyer
HR	Confirm new extension date for retiring offsets with BCT.
BCOP	Provide visuals of current progression compared to 5-year mine progression plan.
BCOP	Update on noise attenuation. How many trucks have it?
HR	Provide map of TSR's around offsets.
HR	Forward map of clearing planned for 2020 to CCC members.
DR	Consult with MN to organise back up representative.

New BOA registration date.

‘VARIATION OF CONDITIONS’ approved on 26th February.

Condition 8 of (Federal Approval) Boggabri Coal Mine Extension, NSW (EPBC 2009/5256), now states:

The conservation covenant(s) required under condition 7 must provide protection in perpetuity for the offset area and be registered by 15 December 2022.

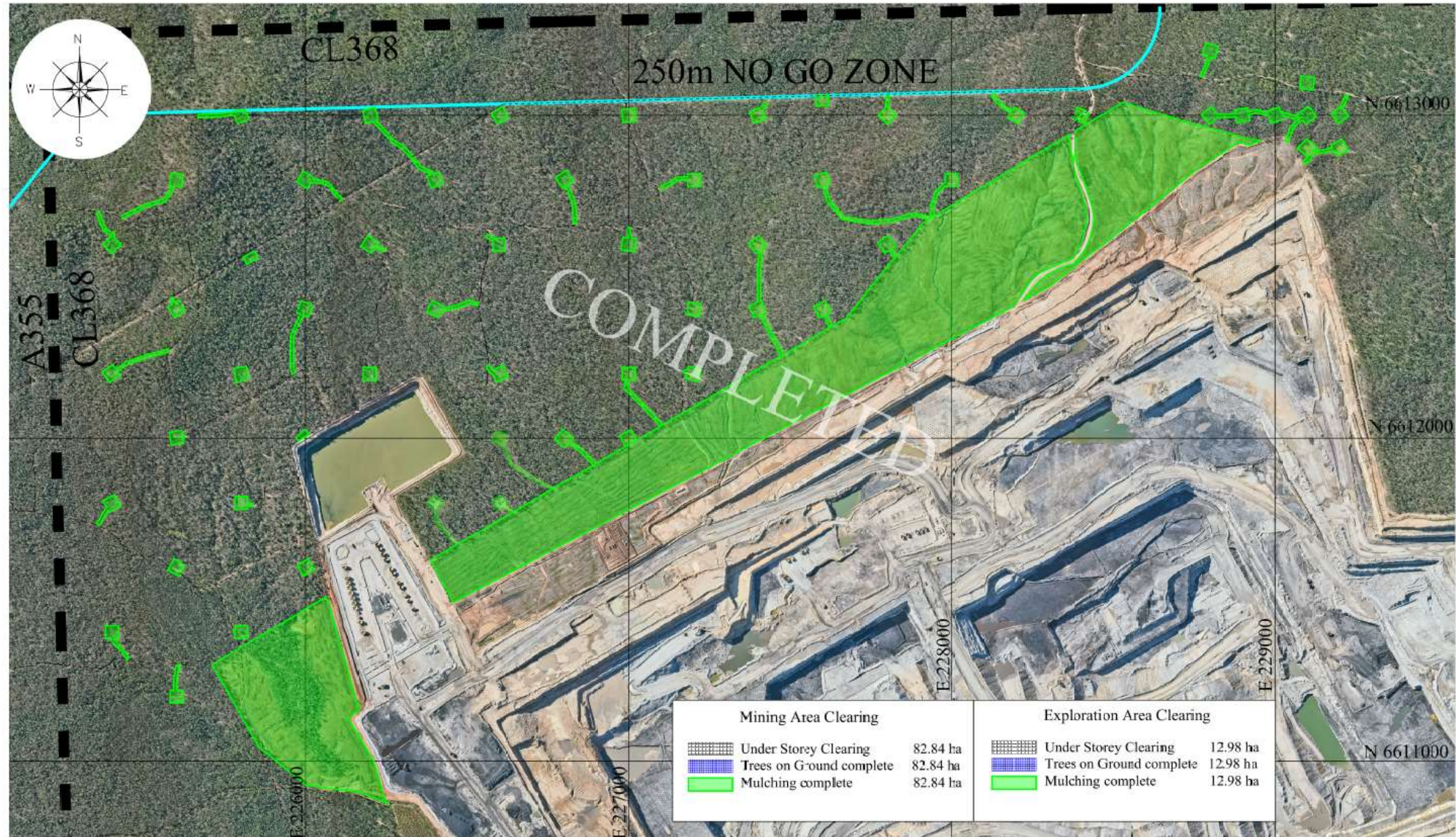
Advertising of jobs in Boggabri ‘Green Flyer’

All of Boggabri Coal’s positions advertised are currently on or have been on ‘Seek’.

Noise Attenuation update.

-
- All 13 of the 730 trucks have Minetek installed
 - 17 of the 930's have either an upgraded exhaust or attenuation kit installed (multiple suppliers)
 - 4 watercarts have Minetek kits installed.

Completed 2020 Tree Clearing






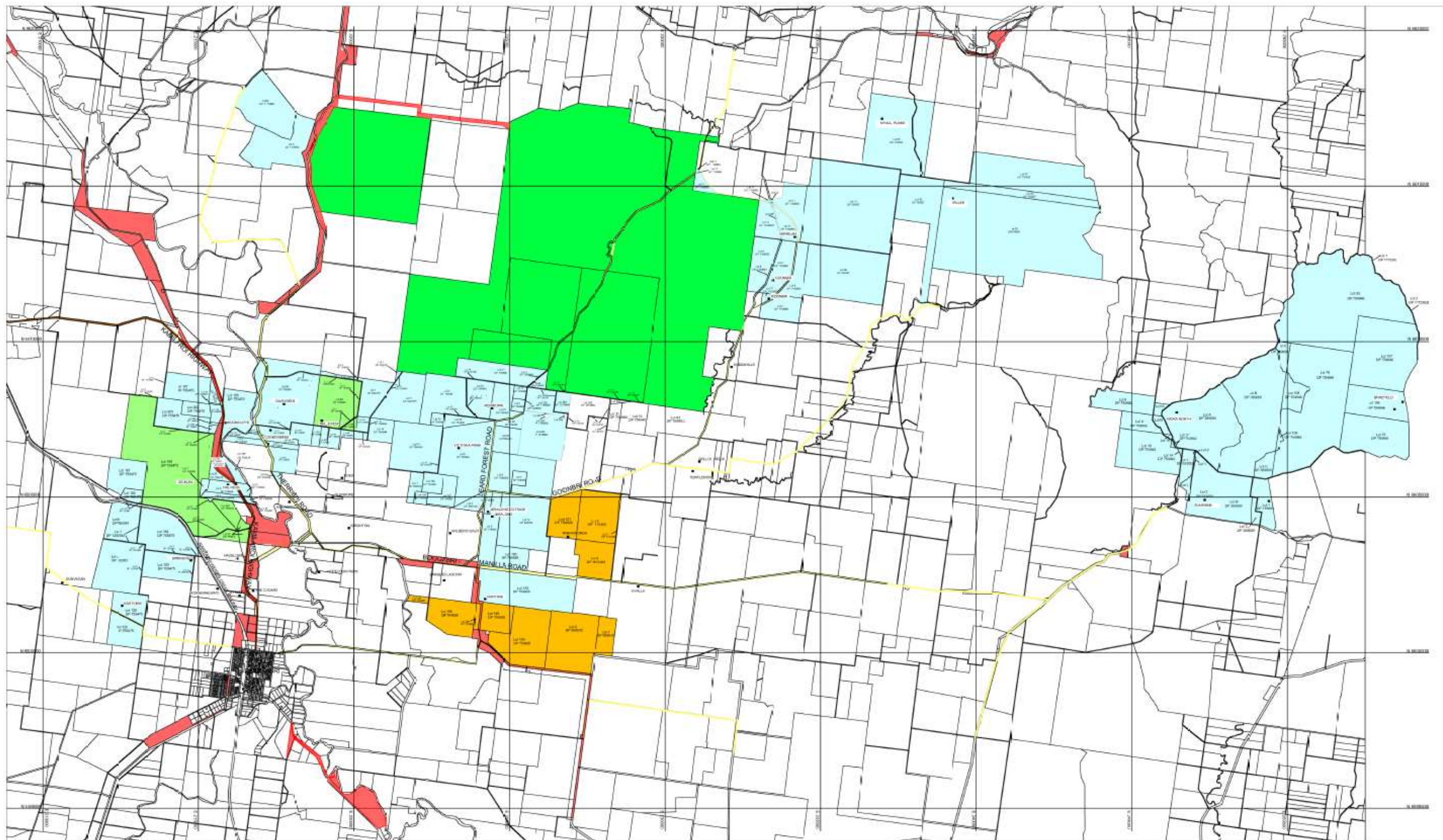
TSR locations

Property Ownership

-  Boggabri Coal
-  Boggabri Coal & Whitelaven Coal Mining
-  Boggabri Coal & Mangles Creek JV
-  Land State Forest
-  TSR

General Legend

-  Roads
-  Kamilaroi Highway
-  Residence / Property name



Progress compared to 5 year plan

The blue line on the attached is the active Mining Area from the previous MOP at end of 2020 (End of 5 years)

The red line is current MOP.

The yellow is topsoil area.



Boggabri child care centre: Tamworth builder to construct facility

Newsroom

Community



 An architect's impression of the Boggabri child care centre. Image: Hill Lockhart Architects

A Tamworth construction company will build Boggabri's first child care centre.

Idemitsu named Greg Bartlett Construction of Tamworth as the successful tenderer for the long-awaited facility on Friday, and said work is expected to start in May.

The 397 square-metre centre, on the corner of Brent and Oakham streets, will cater for children aged 0-5 and provide after-school care for students aged 6-12.

Koala Watering Project

Koala Workshop held onsite 10 December 2020. Attended by Project Ecologist, IAR's Group Manager Environment, CCC members.

10 Koala watering stations are currently being built in Gunnedah.

Supplier to conduct a training session in the installation, use and maintenance.

Final locations of installation of devices yet to be determined. Education and workshops still to happen once CV-19 restrictions are relaxed.

Correspondence

NSW Department of Planning, Industry & Environment

- RFI re: Tree Clearing Program
- Annual Review submitted

NSW Department of Planning, Industry & Environment Resources Regulator

- Mining Operations Plan (MOP) Amendment A has been approved
- Resources Regulator audit Coal Lease 368 – Issue raised with overlapping Petroleum Exploration Licence (Santos) and arrangements for cooperation agreement. Draft audit report received.
- Authority to undertake exploration activities in A355

Department of the Environment and Energy

- Federal Approval 'VARIATION OF CONDITIONS' approved on 26th February.
- Exploration queries

Correspondence

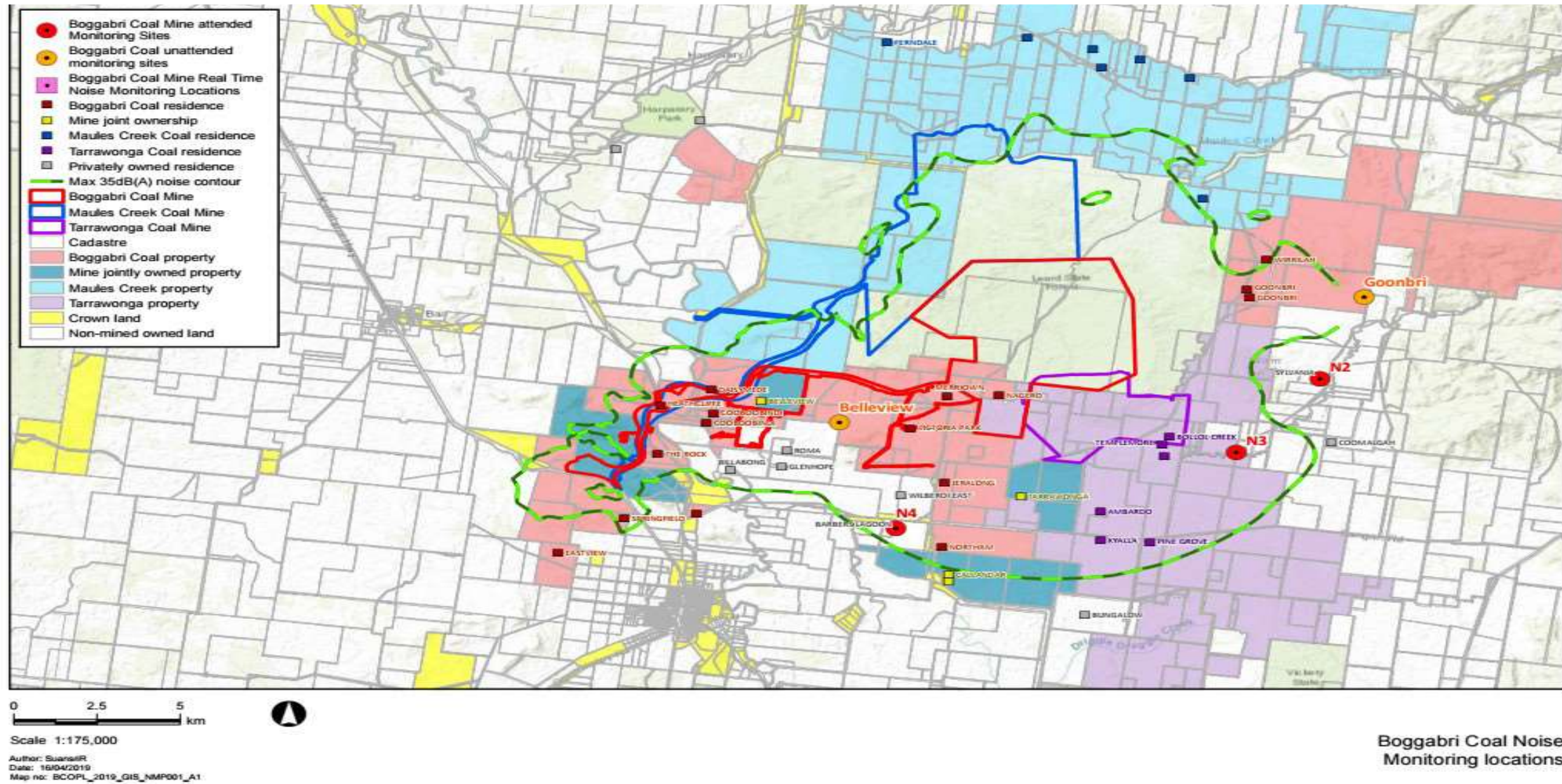
Environment Protection Authority (EPA)

- EPL 12407 Annual Return submitted
- Monthly noise reports.

Forestry Corporation of NSW

- Negotiations re access agreements.

Attended Noise Monitoring



Attended Noise Monitoring

Monthly monitoring conducted in February, March and April 2020.

Night-time monitoring

Carried out in accordance with requirements of the EPL and Australian Standards

There were no exceedances of EPL or Project Approval criteria during the monitoring.

Attended Noise Monitoring Results – 2019/20.

Attended Noise monitoring	LAeq, 15min Impact Assessment Criterion	May- 19	Jun- 19	Jul- 19	Aug- 19	Sep- 19	Oct- 19	Nov- 19	Dec- 19	Jan-20	Feb-20	Mar-20	Apr-20
Sylvania	35	<20	IA	IA	IA	IA	IA	IA	IA	IA	IA	IA	IA
Picton	35	IA	IA	IA	<30	IA	IA	IA	IA	IA	IA	IA	<25
Barbers Lagoon	35	<25	IA	IA	IA	IA	NM	IA	IA	IA	29	IA	IA

IA: no site noise was audible at the monitoring location

NM: Some site noise was audible but could not be quantified.

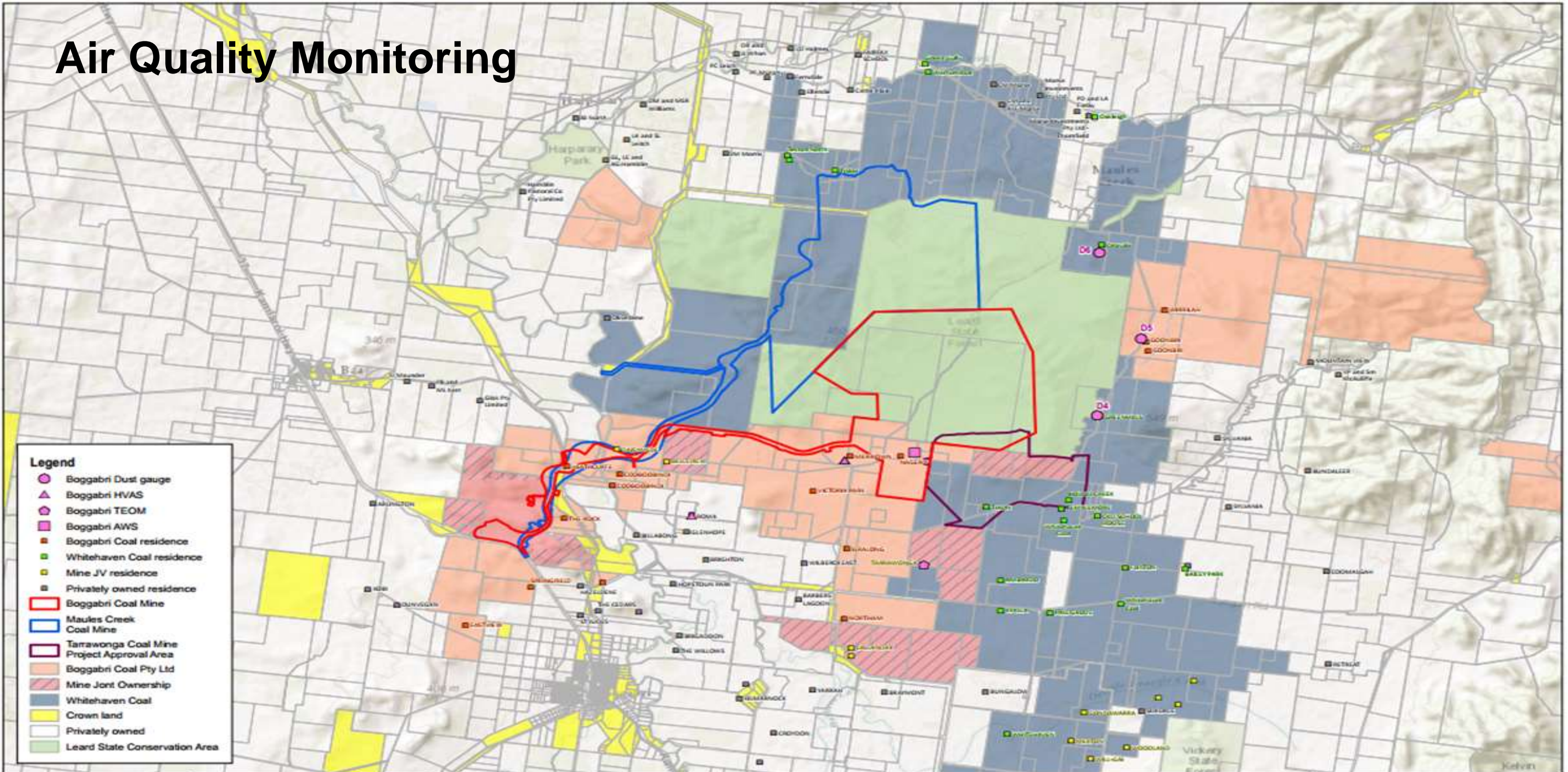
Proposed noise monitor relocation .

BCOP plans to relocate the 'Bellvue' real-time noise monitor from 'Bellvue' property as the 'Roma' property is now no longer privately owned.

The real-time noise monitor will be relocated to 'Wilberoi East' and an additional new monitor situated at 'Glenhope', following agreement being reached with respective landholders. These two locations were chosen because of their ownership status and their proximity to the mine i.e they are two of BCOP's closest privately owned residences.

These monitors are trailer mounted and hence, easily relocatable.

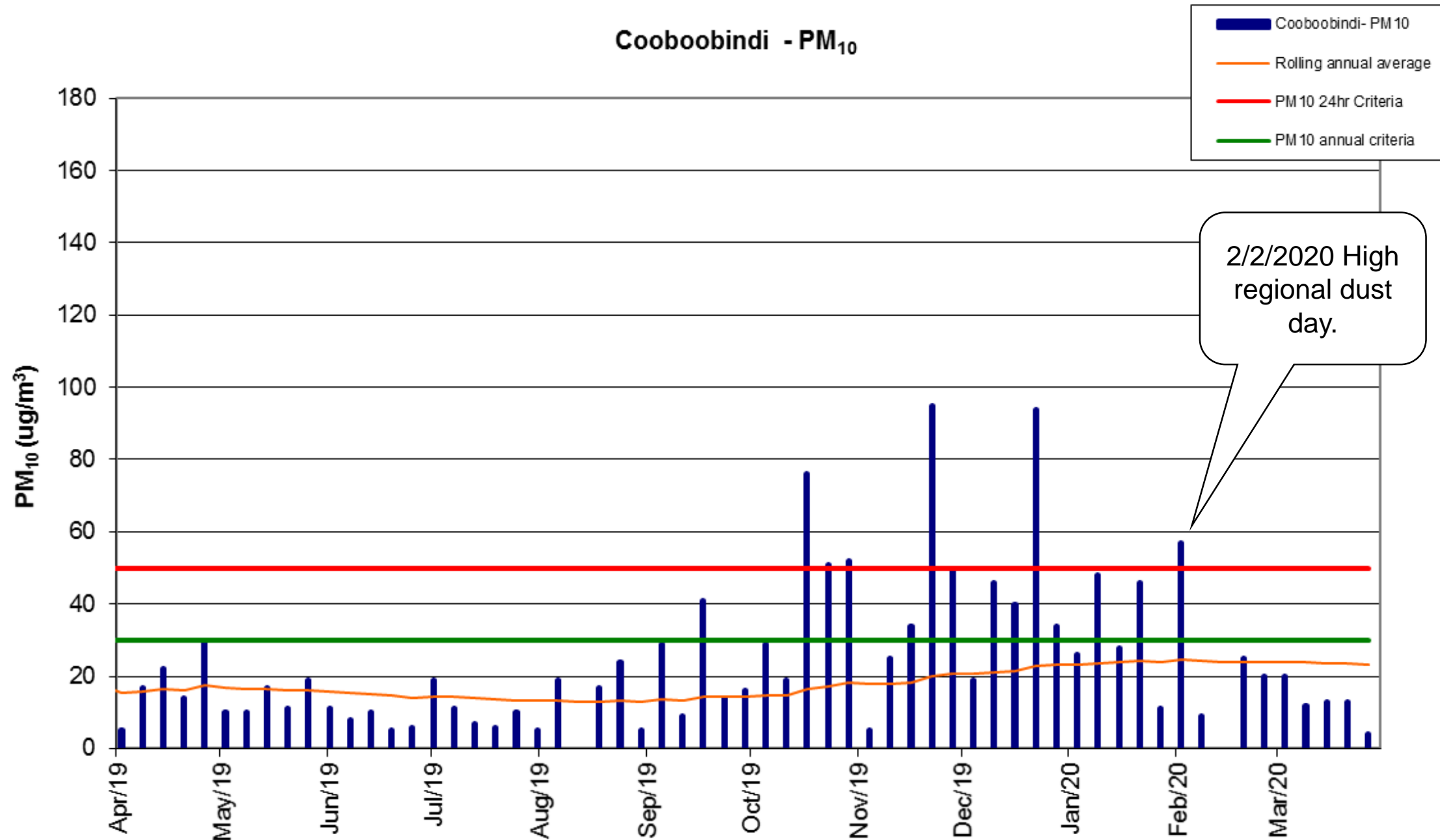
Air Quality Monitoring



Legend

- Boggabri Dust gauge
- Boggabri HVAS
- Boggabri TEOM
- Boggabri AWS
- Boggabri Coal residence
- Whitehaven Coal residence
- Mine JV residence
- Privately owned residence
- Boggabri Coal Mine
- Maules Creek Coal Mine
- Tarrawonga Coal Mine Project Approval Area
- Boggabri Coal Pty Ltd
- Mine Joint Ownership
- Whitehaven Coal
- Crown land
- Privately owned
- Lead State Conservation Area

Air Quality Monitoring

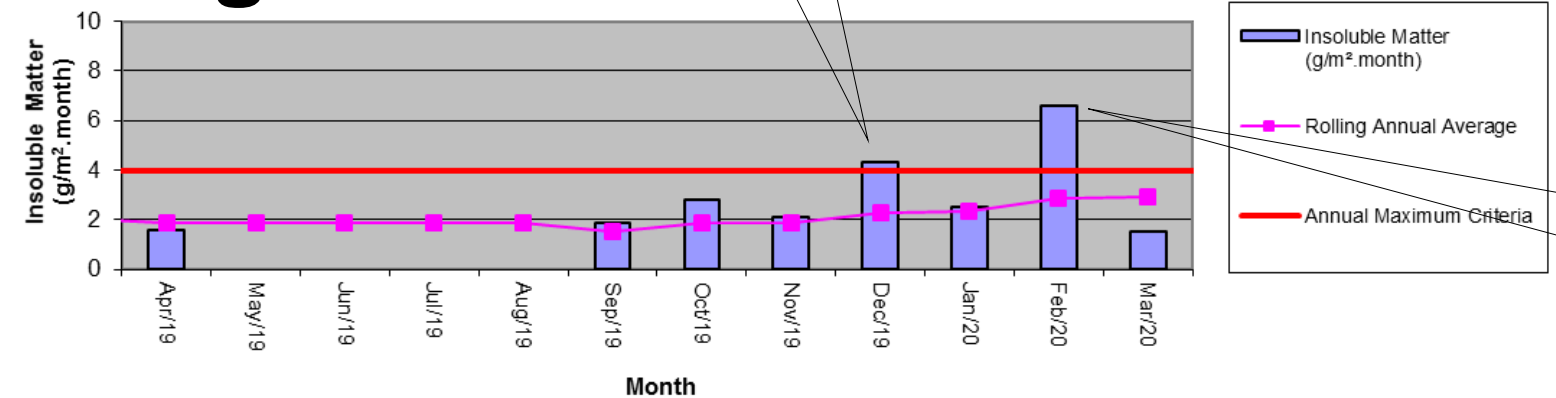


Widespread smoke and dust storms significantly affected air quality levels throughout the State, particularly during the bushfire emergency period from late October 2019.

Air Quality Monitoring

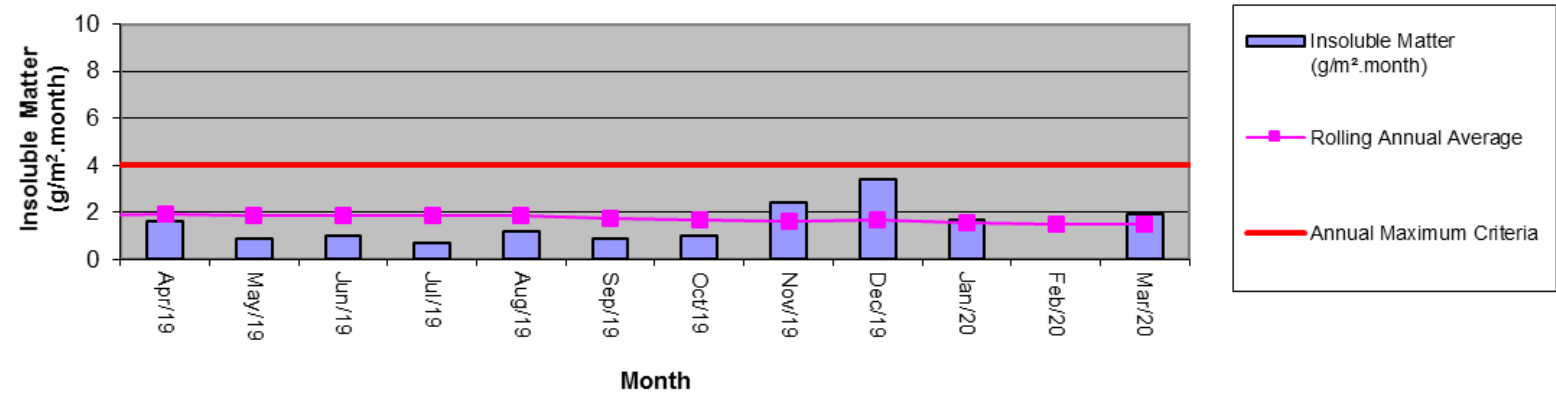
High regional dust for December.

Dust Deposition Gauge D4 - Greenhills



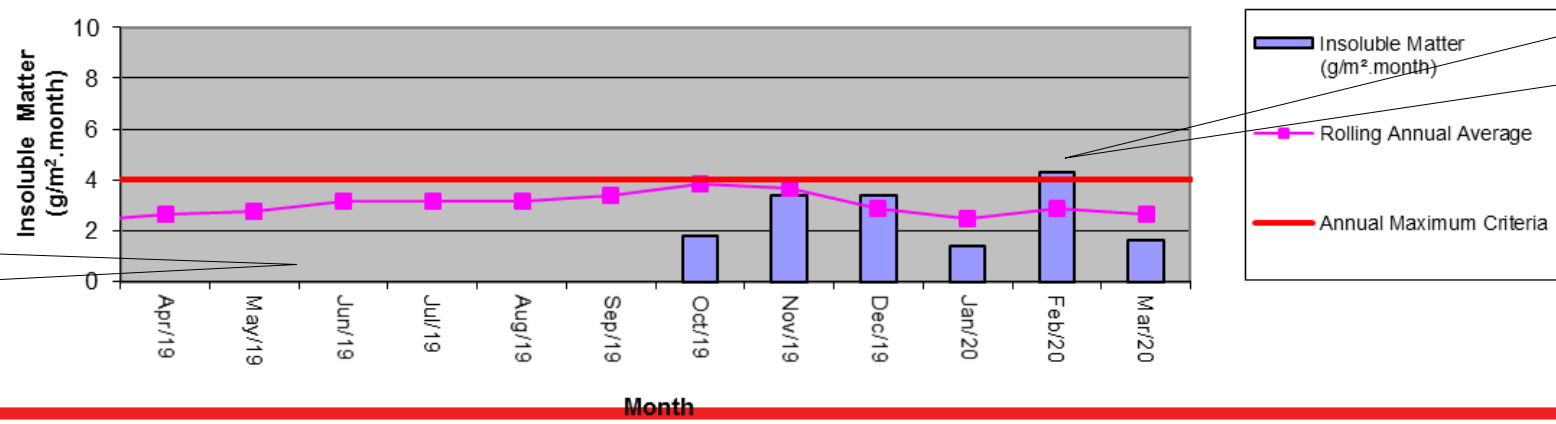
Dominant Easterly wind for February. Wind would need to be from the South for Greenhills to be affected by BCOP.

Dust Deposition Gauge D5 - Goonbri



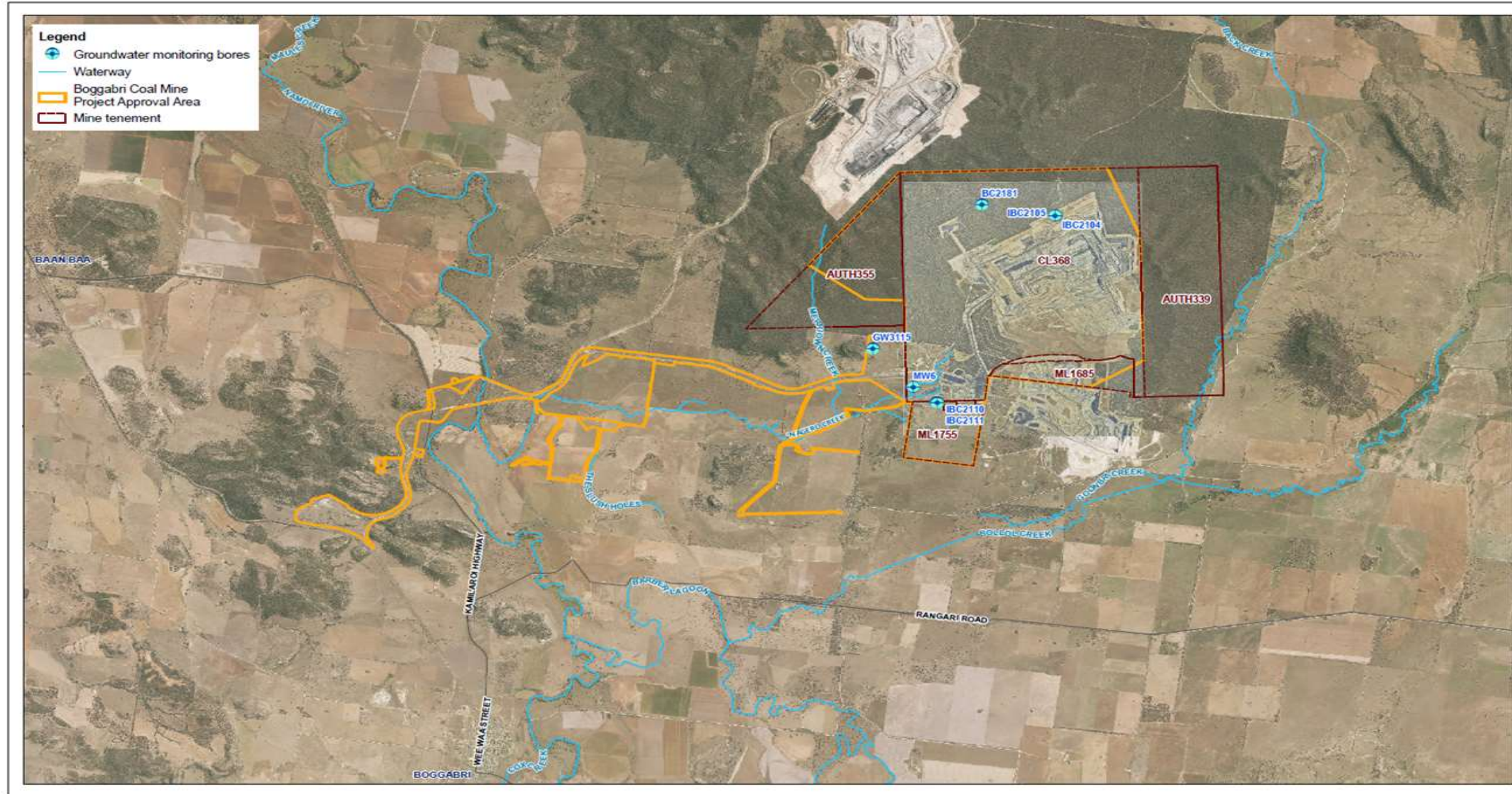
Dominant Easterly wind. Elevated levels not due to BCOP. Wind would need to be SW dominant for Onavale to be affected by BCOP.

Dust Deposition Gauge D6 - Onavale

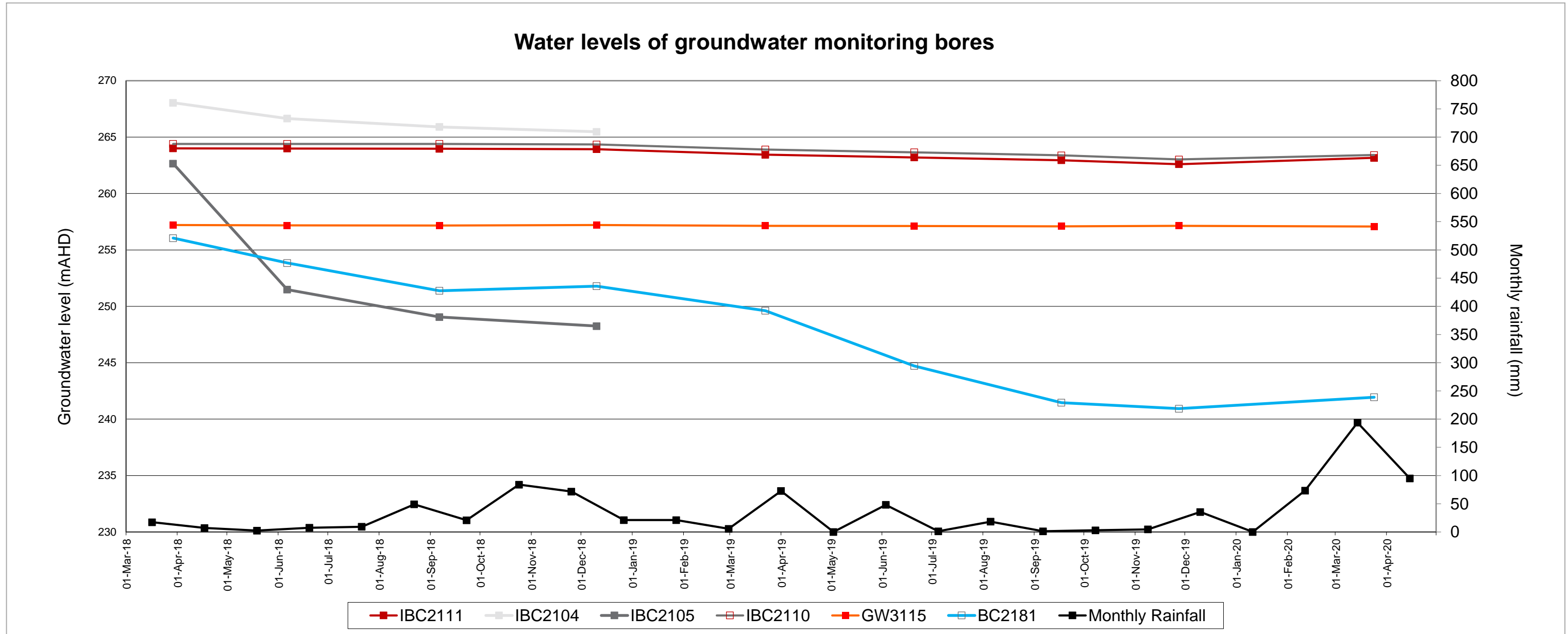


January – September significant contamination from bird droppings

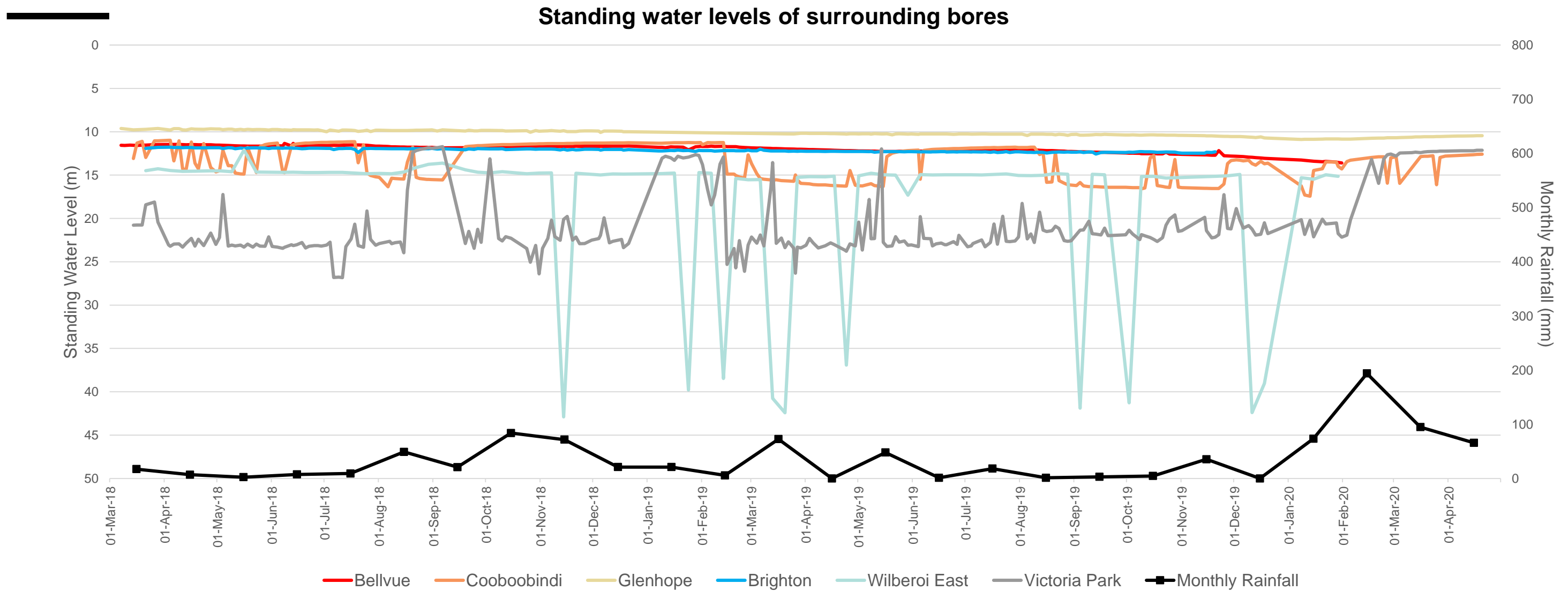
Groundwater monitoring



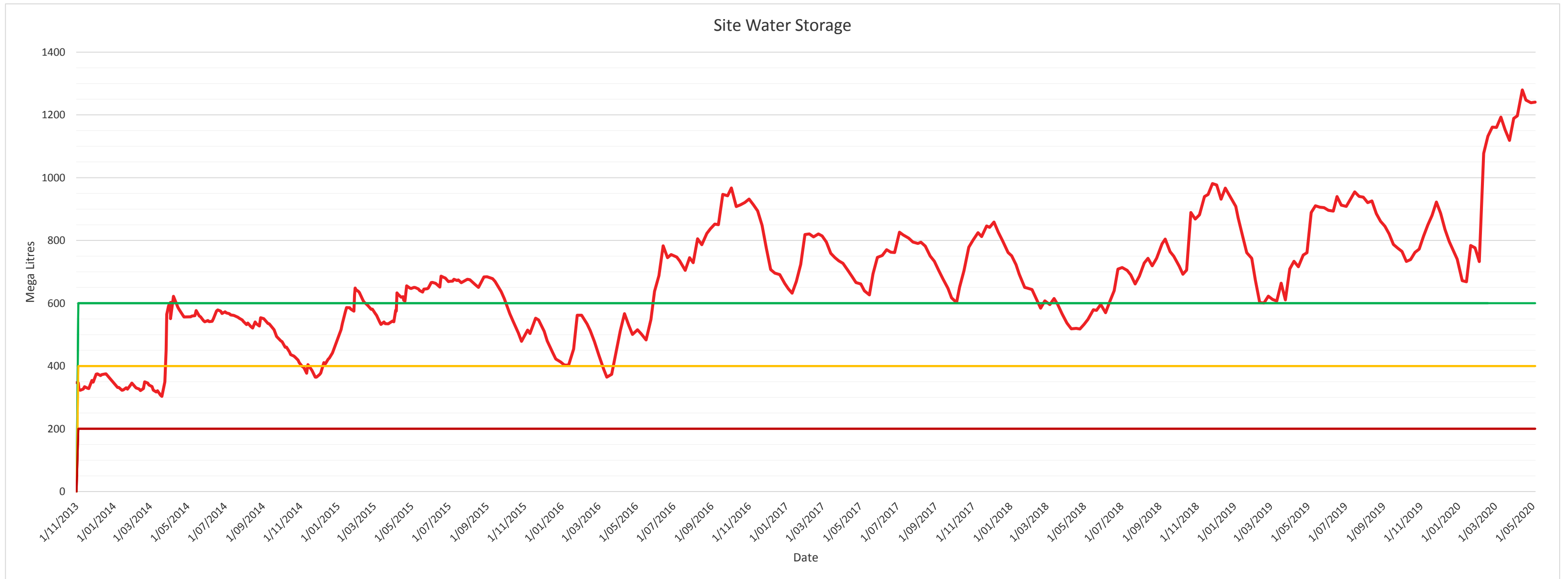
Recharge of surrounding bores



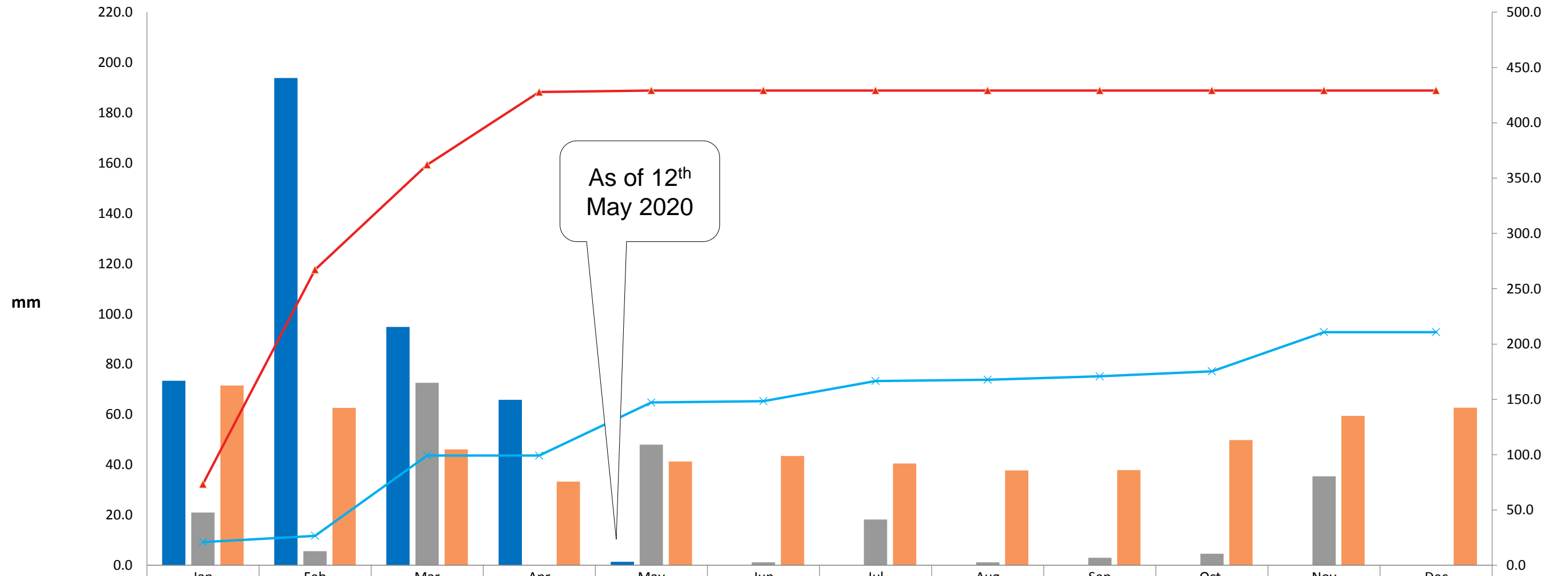
Recharge of surrounding bores



Water storage on site



YTD Rainfall 2020



As of 12th
May 2020

	Jan	Feb	Mar	Apr	May	Jun	Jul	Aug	Sep	Oct	Nov	Dec
Month to Date	73.4	193.8	94.8	65.8	1.4							
Historical Site Data 2019	21.0	5.6	72.6	0.0	48.0	1.2	18.2	1.2	3.0	4.6	35.4	0.0
Historical Average (Boggabri Post Office)	71.5	62.6	46.1	33.3	41.3	43.5	40.5	37.7	37.9	49.8	59.4	62.7
Year to Date Cumulative	73.4	267.2	362.0	427.8	429.2	429.2	429.2	429.2	429.2	429.2	429.2	429.2
Historical Site Data 2019 Cumulative	21.0	26.6	99.2	99.2	147.2	148.4	166.6	167.8	170.8	175.4	210.8	210.8

Water Management Plan Revision

Annual SWB revision.

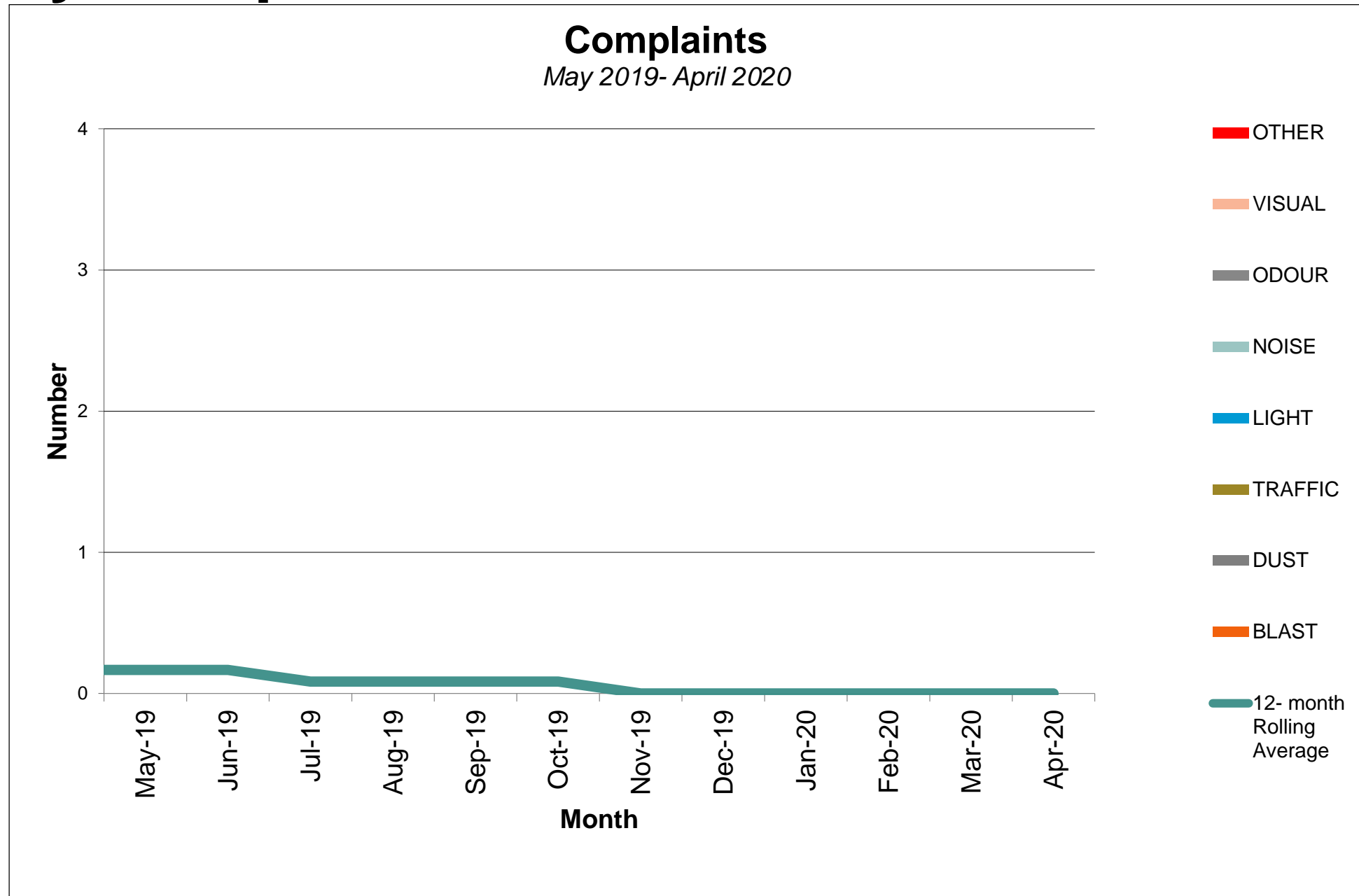
GWMP, SWMP and WMP updates to incorporate changes to the water management system and Mining Operations Plan Amendment 'A'

Incorporate exploration activities in A355.

Community complaints/feedback

Nil complaints

Community Complaints



End

