

**Minutes:** Boggabri Coal Community Consultative Committee  
Held at the Boggabri Golf Club

**Thursday 24 February 2022**

**Members Present:** Elizabeth O'Hara (EOH) – Community Representative, Geoff Eather (GE) – Community Representative, Hamish Russell (HR) – Boggabri Coal, Roselyn Druce (RD) – Community Representative, Richard Gillham (RG) – Community Representative, Stewart Dunlop (SD) – Boggabri Coal

**Apologies:** Danielle Nieuwenhuis (DN) – Boggabri Coal, Mitchum Neave (MN) – Community Representative, Pat Murphy (PM) – Community Representative

**Independent Chair:** David Ross (DR)

**Independent Secretary:**

Debbie Corlet (DC)

<b>Agenda Items</b>	<b>Who to Present</b>
1. Welcome, Introductions and Apologies	DR
2. Declaration of Pecuniary or other interests	DR
3. Confirmation of the Minutes of the previous meeting – Thursday 4 November 2021	DR
4. Business arising from the previous minutes – Action List Distributed	DR
5. Company Reports and Overview of Activities	SD, HR
6. General Business	ALL
7. Next Meeting – <b>Thursday 26 May 2022</b>	

<b>Agenda Item</b>	<b>Discussion</b>	<b>Action/By Whom</b>
<b>1.</b>	<b>Welcome, Introductions and Apologies</b> – DR welcomed everyone to the first CCC for the year. DR welcomed Elizabeth our newest community representative who will be on all three CCCs.	
<b>2.</b>	<b>Declaration of pecuniary or other interests</b> – DR noted that he is paid a fee to chair these meetings as is DC for typing the minutes. RG property falls under the zone of affectation.	
<b>3.</b>	<b>Confirmation of the minutes of the previous meeting (4 November 2021)</b> – Everyone was comfortable with the previous meeting minutes. It was noted there was a mistake in the minutes – 1.4 ML should read 1.4 GL.	ACTION 1 – DR to fix mistake in previous minutes
<b>4.</b>	<b>Business Arising from the previous minutes</b> – actions were completed.	
<b>5.</b>	<b>Company Reports and Overview of Activities by Boggabri Coal</b>	

**2021/2022 Archaeological Salvage Program**

- Aboriginal Stakeholder Consultation Forum meeting held 25 November 2021 with next ASCF meeting to be held on 16 February 2022. Permission for excavator use received from DPIE and Heritage NSW in October 2021.

RD – The archaeological site – is there a koala habitat and what else is in that area?

HR – Ecologists have identified trees with habitat features, prior to the being cleared.

**Correspondence – NSW Department of Planning, Industry & Environment**

- Surface Water Management Plan consultation.
- BTM 3 yearly groundwater model finalised and submitted. DP&E have indicated intention to audit 2022 tree clearing program.

**NSW Natural Resources Access Regulator (NRAR)**

- Site visit on 16 December and consultation regarding the water management system.

**Environment Protection Authority (EPA)**

- Consultation around tyre disposal EPL conditions.

**Biodiversity Conservation Trust** – Consultation re: Conservation Agreements. Planned site visit postponed due to access / weather.

A discussion took place as to whether the Gomeri can have access to the offset properties? The Gomeri were hoping some land would be set aside and not all gone to the National Parks or sold off to another landowner.

SD – There’s no mechanism for the offset properties to be available. The BCT has a 20-year obligation on us for outcomes. Post 20-years and if we were to sell, those properties would come with liabilities that would transfer with ownership, so at that time it would be possible for the offset to transfer to the owner. The obligations would sit with the owners.

HR – It’s very possible that it can happen. We aren’t prioritising for the moment, but we have to satisfy the State Approval.

RD – But a commitment from Boggabri Coal about a conversation with the Gomeri?

SD – We are already in discussion with Gomeri, and they have raised issues. If the property is divested through a sale, the upkeep cost and regeneration cost will go across to that property owner. An estimated \$40 million would be required to be spent on those properties.

RD – The Aboriginal Stakeholder Consultation Forum (ASCF) had a meeting on 16 February 2022, are these minutes recorded. If so, is the wider Aboriginal community and / or the general public able to access these minutes? If so, can you provide a link? If not, can you explain why at least the wider Gomeri community are not privy to these meetings?

ACTION 2 – HR to find out if there are privacy issues associated with ASCF minutes

<p>A discussion then took place about this.  HR: The RAPs are sent the minutes who, in turn, are required to forward the minutes on to their stakeholders and communities rather than the mine.</p> <p><b>NSW Resources Regulatory</b> – Meeting held on 10 December to discuss Rehabilitation Reforms. MOP Addendum letter sent 21 December. Approved January 2022.</p> <p><b>Forestry Corporation of NSW</b> – Continuing consultation about access / compensation agreements.</p> <p><b>Department of Agriculture, Water &amp; Environment</b> – Application to revise Federal Approval clearing limits sent Dec 2021. Approved Feb 2022. Requested resubmission of revised Biodiversity Corridor Plan.</p> <p>RD – With the MOP update and saying it'll be changed over. Is there something in the Addendum that we need to be aware of? Any major changes?  HR – No major changes.  RD – Why the Addendum then?  HR – There were some processes that we needed included. Process to do with drill and exploration.</p> <p><b>Operations Update</b> – 2022 is 16<sup>th</sup> year of operations. Strong operational performance, despite high rainfall and impact of COVID restrictions. 7.58m tonne ROM coal in 2021. Budgeting to mine 8.35m tonne in 2022. MOD8 submissions are under review. The mine is currently undertaking further analysis where relevant to inform response to public exhibition.</p> <p>RD – You say you've been mining at this site for 16 years but in your EPBC Audit it has up to year 7.  HR – It was audited last year as it is every year. Every year an EPBC approval compliance report is published on BCO's website.  SD – Let us know where you saw that, and we'll have it corrected?  HR – Re the audits – the Federal Approval only started in 2013 so that's why you can only see 7 years' worth of audits. They didn't start when the mine actually started.</p> <p><b>COVID Update</b> – Ongoing monitoring and compliance with State requirements. Providing testing capabilities for workers and their families to keep workplace and community safe. Strict protocols on site continue.</p> <p>EOH – Can you advise the number of lost days due to COVID?  SD – We have had high absenteeism but can't say it was always COVID related unfortunately. At peak it was maybe 30 or 40 people affected by COVID but not directly related.  DR – Coal budgeted last year and this year – was it more the flood or COVID that affected the mining?  SD – More the floods. We brought in subcontractors to make up the shortfall. COVID was a management issue but not a production issue. It's a hassle but it was the flood that lost production.</p>	<p>ACTION 3 – HR to provide an update on what the Addendum contained</p> <p>ACTION 4 – SD to confirm exact numbers re lost days due to covid</p>
---	--

	<p><b>Management Plan Revision</b> – Surface Water Management Plan revision currently consulting with regulators. Blast Management Plan updated. Mainly administrative changes to reflect current regulation and procedural improvements. Final revision of Traffic Management Plan being prepared. No material changes. CHMP revision consulting with RAPS.</p> <p><b>Exploration Update</b></p> <ul style="list-style-type: none"> <li>• Blue holes – 2021 Finalised – Residual from 2021 program.</li> <li>• Orange holes – 2022 core – Structural quality and geotechnical data. Coal quality.</li> <li>• Yellow holes – 2022 chip – Structural data.</li> <li>• Red holes – UCS, Youngs Modulus, Poissons Ratio and Slake durability. Cores collected and lab tested to inform mine design standards.</li> </ul> <p>RG – Yellow patches on the slide – how many years before that can be mined?  HR – Limited to the amount of clearing for the 12 months of mining. We can't clear 10-years of forest in one hit and then not mine there.  RG – So you won't be mining in that area?  HR – The process involves the salvage of topsoil and subsoil and then we'll mine area's depending on where pit progression occurs. Out to the eastern areas, the mining will happen. If topsoil is stockpiled, it will then be double handled.</p> <p><b>Monitoring Summary</b> – Air Quality, Noise and Ground Water monitoring has been undertaken in accordance with Project Approval and EPL requirements. No exceedances of Project Approval or EPL limits have occurred in the reporting period. Slides provided in pack.</p> <p><b>Bore Extraction since Previous Meeting</b> – BCOP has extracted 30.26 ML from its borefield since 4 November 2021.</p> <p><b>Community Complaints</b> – No complaints received since November meeting.</p>	
6.	<p><b>General Business</b></p> <p><b>General Business – Biodiversity Offset Areas.</b></p> <ul style="list-style-type: none"> <li>• Fencing program ongoing.</li> <li>• 70,000 tubestock ordered for tree planting in 2022 on Goonbri, Mallee &amp; Myall Plains offsets.</li> <li>• Annual biodiversity monitoring activities.</li> </ul> <p>RD – When will the conservation agreements for offsets be progressed?</p>	

SD – Drafted and ready for submission. Initial conservation agreement will be used as a template for other agreements. Meeting with BCT who are coming to site next week for a meeting. Discussed with DPE recently about progress and transferring three properties to National Parks. Internal approval required for that.

A discussion took place about the Biodiversity Corridor Plan, which is a condition in the mine’s Federal Approval. It wasn’t approved back then. Only recently they could approve the plan. So, the mine are revising and then resubmitting it. Not sure why they couldn’t approve it originally. The wording in the approval didn’t allow it to be approved.

SD - Boggabri Coal have no plans or approval to mine through the corridor. We are constrained by our current approval and associated disturbance boundary. Any changes would require further approval from both state and federal governments. The business is continually reviewing its strategy and if it changes we will consult and advise along the way as required. The BCP doesn’t allow us to mine through the corridor. It just can’t be done.

HR – It has to be reflected in the approval.

**Housing VPA update**

- Reviewing options for construction of housing in 2022 in Boggabri.
- Discussions to be held with Council in Quarter 1.
- Costs included in 2022 Capital Budget.

**Operations Slide – MOD8**

HR – Discussed with DPE the possibility for amendments which means submission could extend beyond Quarter 4. We’ll get complete closure on that next month. We’ll give updates at the next meeting and then in September / October.

SD – To go deeper but not as quick.

RD – Start on the top in 2025.

SD – Once the plan is finalised, we can give you the plan of progression. More than happy to show everyone what it will look like.

**General Business Slides**

EOH – How many tyres have been buried since the mine started.

HR – We’d have to look at previous minutes before commenting on this.

RD – Since the EPL was amended then?

HR – It was no greater than in the EPL. The number was 300 we would have buried that, but we’ll report back at the next meeting on the actual number.

RD – Two nearby coal mines under-estimated emissions. Have BCL had the greenhouse emissions peak reviewed or verified? When you put your EA in, Were they accurate?

ACTION 5 – HR How many tyres have been buried

	<p>SD – No-one has flagged that. Modelling for Mod8 we’ve had it remodelled and two independent consultants look at the data. They both came up with the same answer. As we do the amendment, we’ll be doing the greenhouse gas emissions again as well. That’ll be redone and re-peer reviewed. We need to do a new analysis.</p> <p>GE – Has there been a change in the configuration of the trains? They’ll ask questions, so thank you.</p> <p>SD – Potential configuration change. Some trains will convert to a locomotive push and pull type system. We have reconfigured the loading facility a few weeks ago.</p>	
<b>7.</b>	<p><b>Next meeting date</b> – Next meeting <b>Thursday 26 May 2022 at 9:30 am</b>. Location at the Boggabri Golf Club. There will also be a Joint CCC as well as the Environmental Trust meeting. Other meetings for the year are:</p> <p>Thursday 25 August 2022 Thursday 27 October 2022 with a Joint CCC and the Environmental Trust.</p>	

Meeting Closed at 11:21 pm

**Appendix 1: Actions**

Page No	Action No	Description	Date Raised
1	1	DR to check previous minutes and update from megalitres to gigalitres prior to finalising	24 February
2	2	HR to find out if there are privacy issues associated with ASCF minutes	24 February
3	3	HR to provide an update on what the Addendum contained	24 February
4	3	SD to confirm exact numbers re lost days due to covid	24 February
5	5	HR How many tyres have been buried	24 February



# CCC Meeting February 2022

24<sup>th</sup> February 2022



# Agenda

February 2022



- Confirmation of record keeping
- Apologies
- Declaration of pecuniary or other interests
- Confirmation of minutes
- Business arising from previous minutes
- Correspondence
- Company reports and overview
- General business
- Next meeting



## Business Arising from Previous Minutes

Action	Action to be done	Status	Comments
1	BCM to confirm when tyres commenced being buried	●	Email response
2	MN & SD to report back on tyre discussions	●	Responded
3	BCM attempting to arrange an expert to discuss archaeological salvage program (availability issues)	●	Responded
4	BCM to explain the what each of the different exploration hole colours during the exploration update	●	Responded – Slide 18
5	BCM to add to the water storage slide upper limits of what can be held on site .	●	Responded – Slide 29
6	BCM to send presentation 10 days prior to CCC meetings	●	Responded
7	BCM to respond to CWA letter	●	Letter sent to CWA
8	BCM to organise Biodiversity Offset visit	●	Email response
9	BCM to include a slide on the south-eastern offsets/other less advanced area.	●	Responded – Slide 5

## 2021/22 Archaeological Salvage Program

---

- Aboriginal Stakeholder Consultation Forum meeting held 25<sup>th</sup> November 2021
- Next ASCF meeting to be held on 16<sup>th</sup> February 2022
- Permission for excavator use received from DPIE & Heritage NSW in October 2021

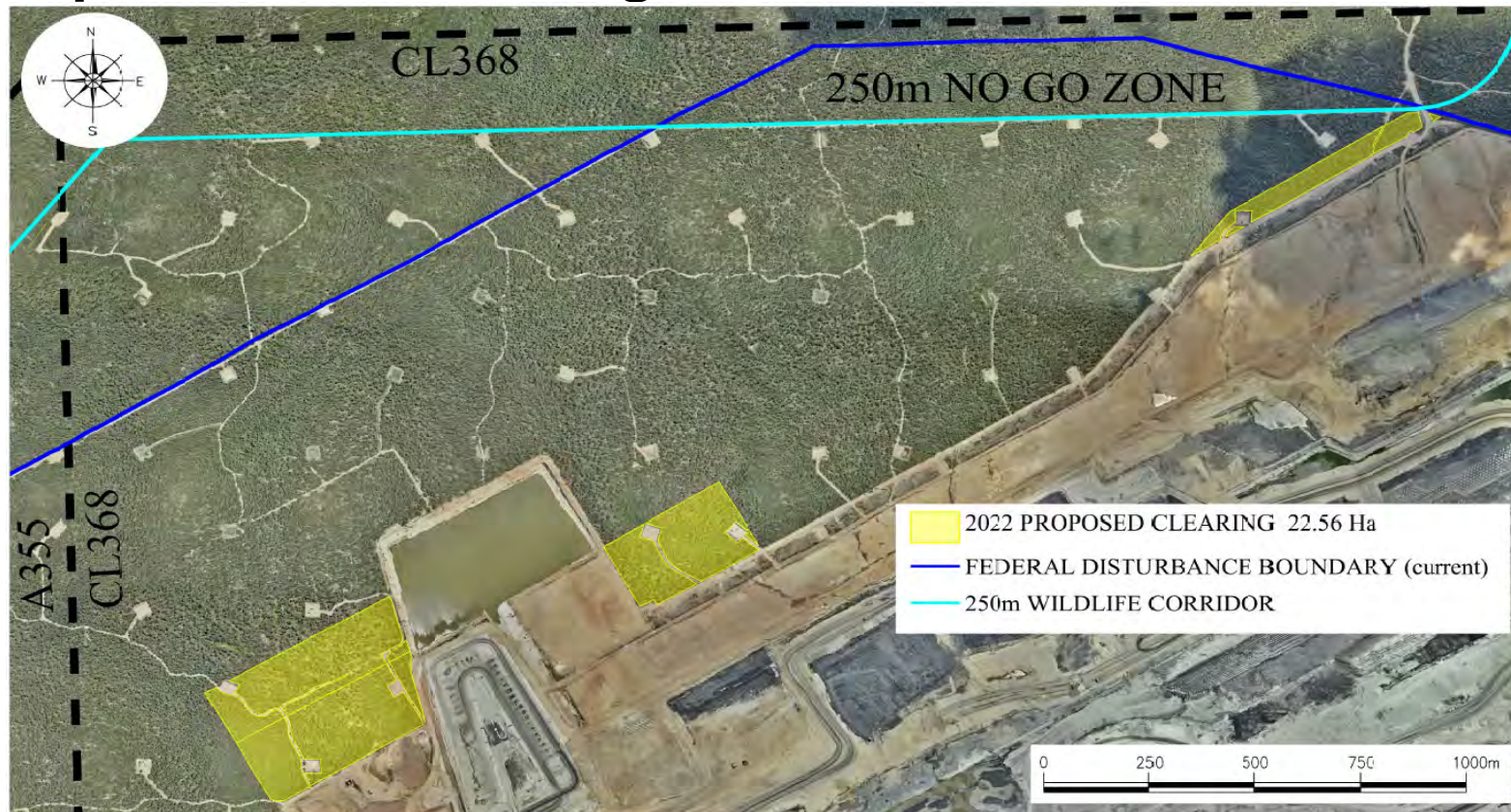




# SE Rehab update



# 2022 Proposed Tree Clearing



 idemitsu  
**Correspondence**





## Correspondence

### NSW Department of Planning, Industry & Environment

- Surface Water Management Plan consultation
- BTM 3 yearly groundwater model finalised & submitted
- Responded to request re: 2022 tree clearing scope & timing
- Indicated intention to audit 2022 tree clearing program

### NSW Natural Resources Access Regulator (NRAR)

- Site visit on 16<sup>th</sup> December and consultation regarding the water management system



## Correspondence

### Environment Protection Authority (EPA)

- Monthly noise reports submitted
- Site Inspection conducted
- Consultation around tyre disposal EPL conditions
- Responded to request received regarding MCCM blast events

### Biodiversity Conservation Trust

- Consultation re: Conservation Agreements
- Planned site visit postponed due to access/weather

## Correspondence

### NSW Resources Regulator

- Meeting held on 10<sup>th</sup> December to discuss Rehabilitation Reforms
- MOP Addendum letter sent 21<sup>st</sup> December. Approved January 2022

### Forestry Corporation of NSW

- Continuing consultation about access/compensation agreements

### Department of Agriculture, Water & Environment

- Application to revise Federal Approval clearing limits sent Dec 2021. Approved Feb 2022
- Requested resubmission of revised Biodiversity Corridor Plan



 idemitsu  
**Company Reports and Overview**



## Operations Update

---

- 2022 is our 16<sup>th</sup> year of operations
- Strong operational performance, despite high rainfall and impact of COVID restrictions
- 7.58m Tonne ROM coal in 2021. Budgeting to mine 8.35m tonne in 2022
- MOD8 submissions are under review. The mine is currently undertaking further analysis where relevant to inform response to public exhibition.



 idemitsu  
Nov/Dec floods



Namoi River – Kamilaroi Highway looking South



Namoi River from Highway to Daisymede Homestead

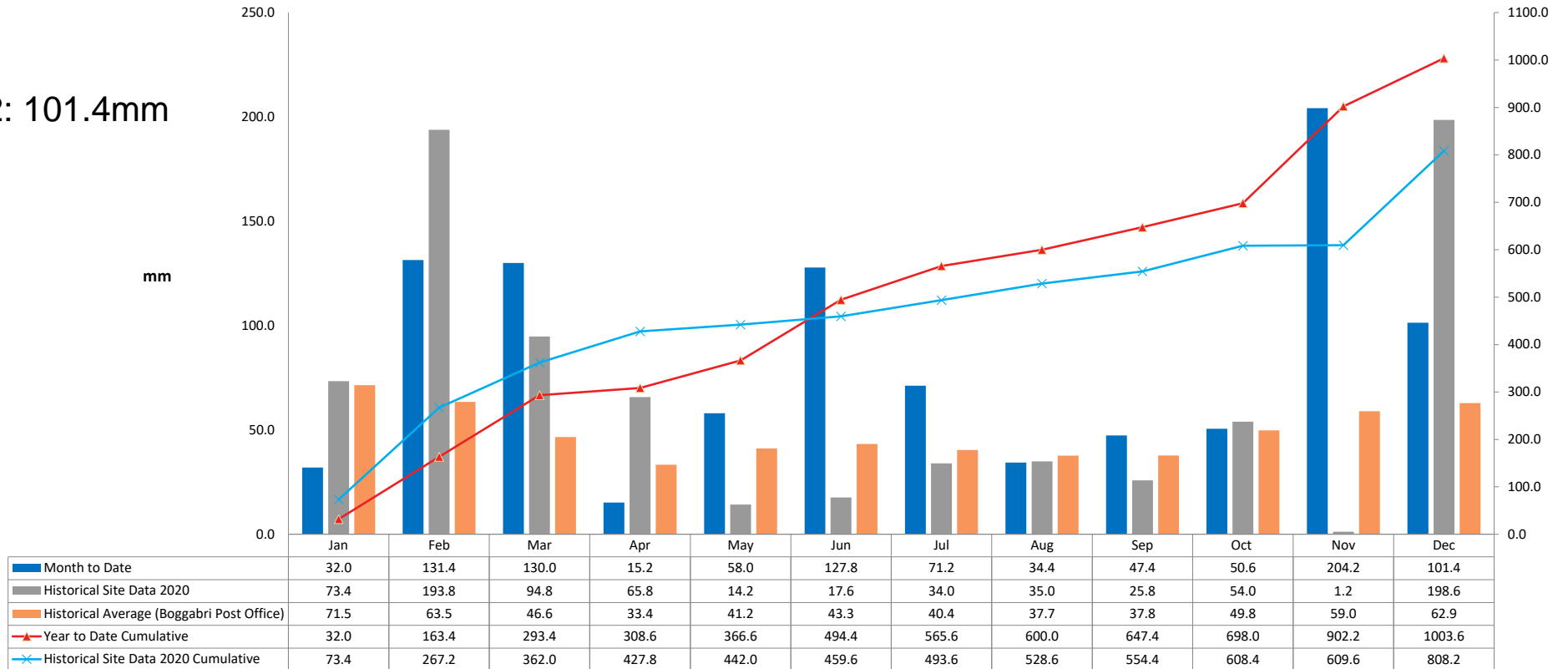


Namoi river – Mine access bridge @ Therribri Rd



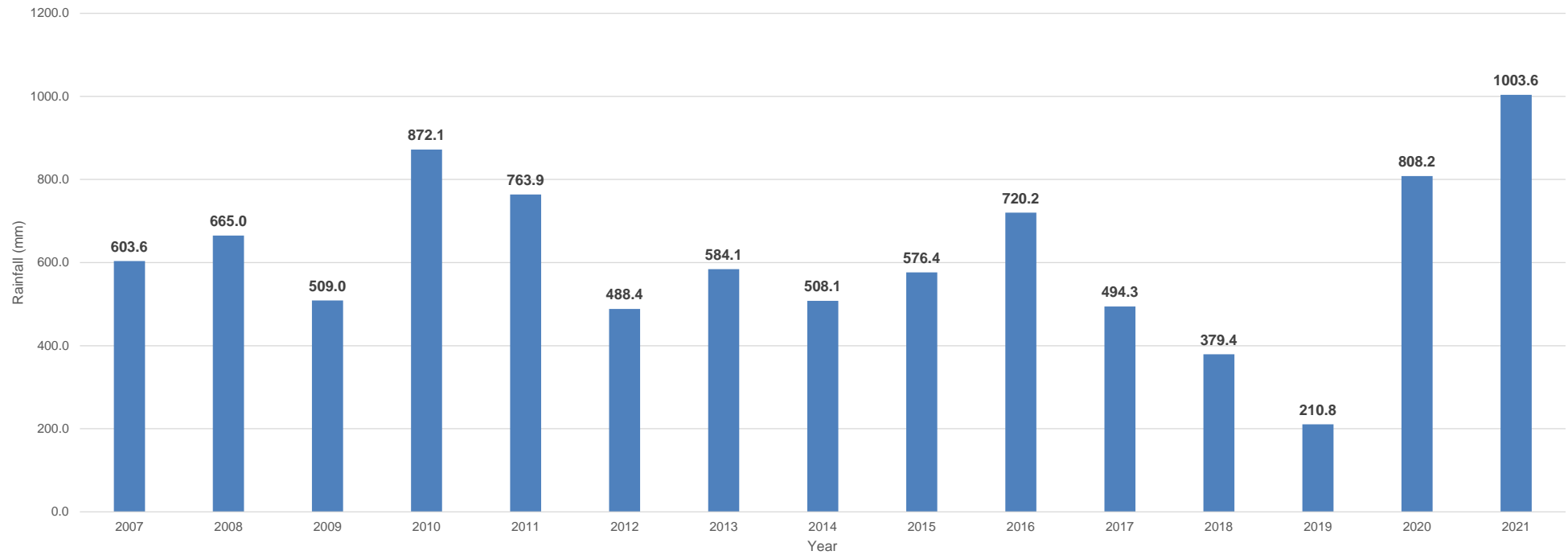
## 2021 Rainfall

YTD 2022: 101.4mm



# Site rainfall since 2007

BCOP Historic Rainfall





## COVID UPDATE

- Ongoing monitoring and compliance with NSW Public Health Orders and NSW Health Guidelines
- Providing testing capabilities for workers and their families to keep work place and community safe
- Strict protocols on site include:
  - Face masks
  - Social distancing in facilities and vehicles
  - Personal hygiene stations
  - Segregation of different work groups
  - Additional professional cleaning

## Management Plan Revision

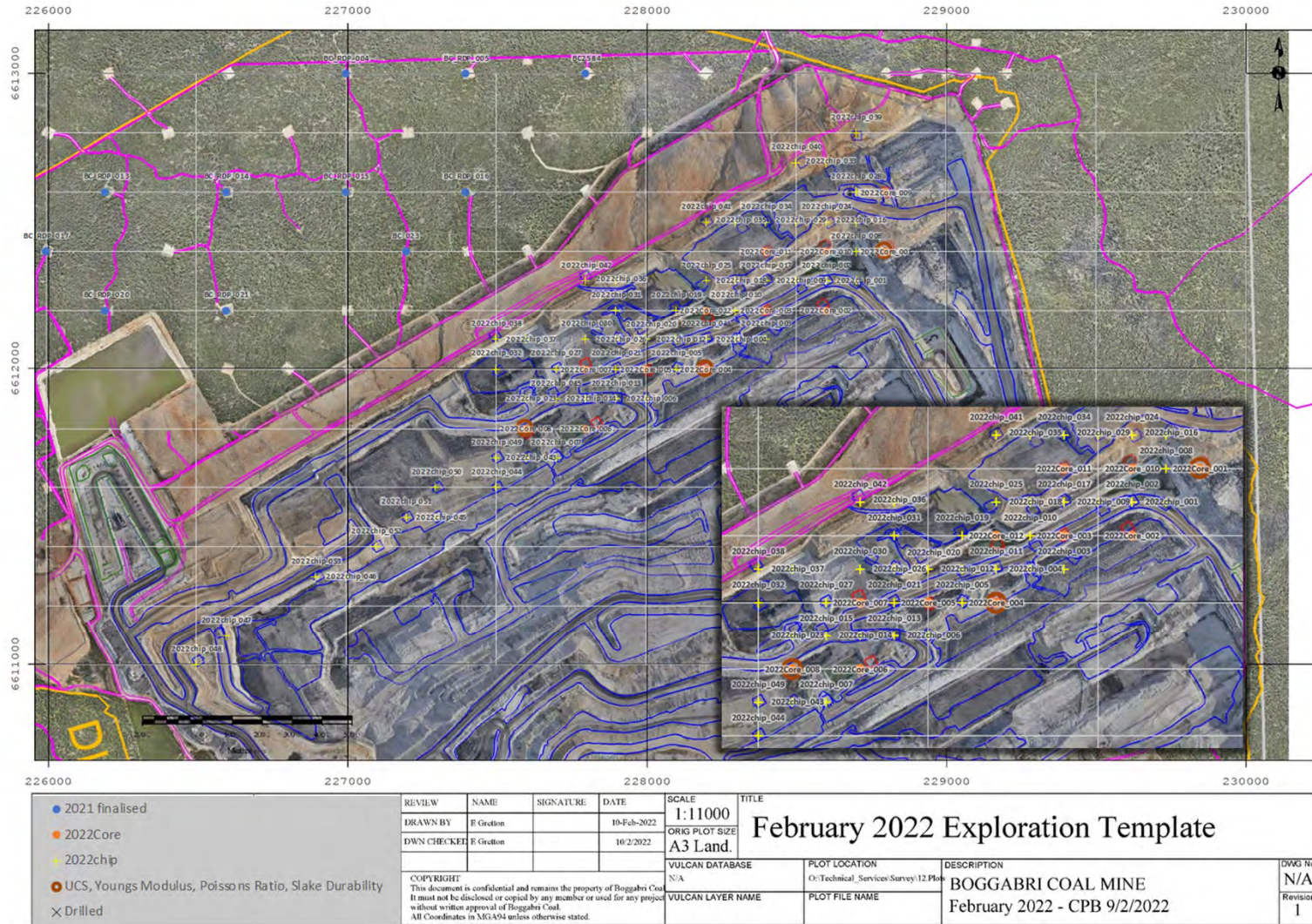
- Surface Water Management Plan. Revision currently subject of consultation with regulators
- Blast Management Plan updated. Mainly administrative changes to reflect current regulation and some procedural improvements
- Traffic Management Plan. No material changes. Final revision being prepared for submission to DPIE
- CHMP revision subject of RAP consultation





# Exploration Update

- Blue holes – 2021 Finalised  
- Residual from 2021 program.
- Orange holes – 2022 core  
- Structural quality and geotechnical data.  
- Coal quality
- Yellow holes – 2022 chip  
- Structural data
- Red holes – UCS, Youngs Modulus, Poissons Ratio and Slake durability  
- Cores collected and lab tested to inform mine design standards



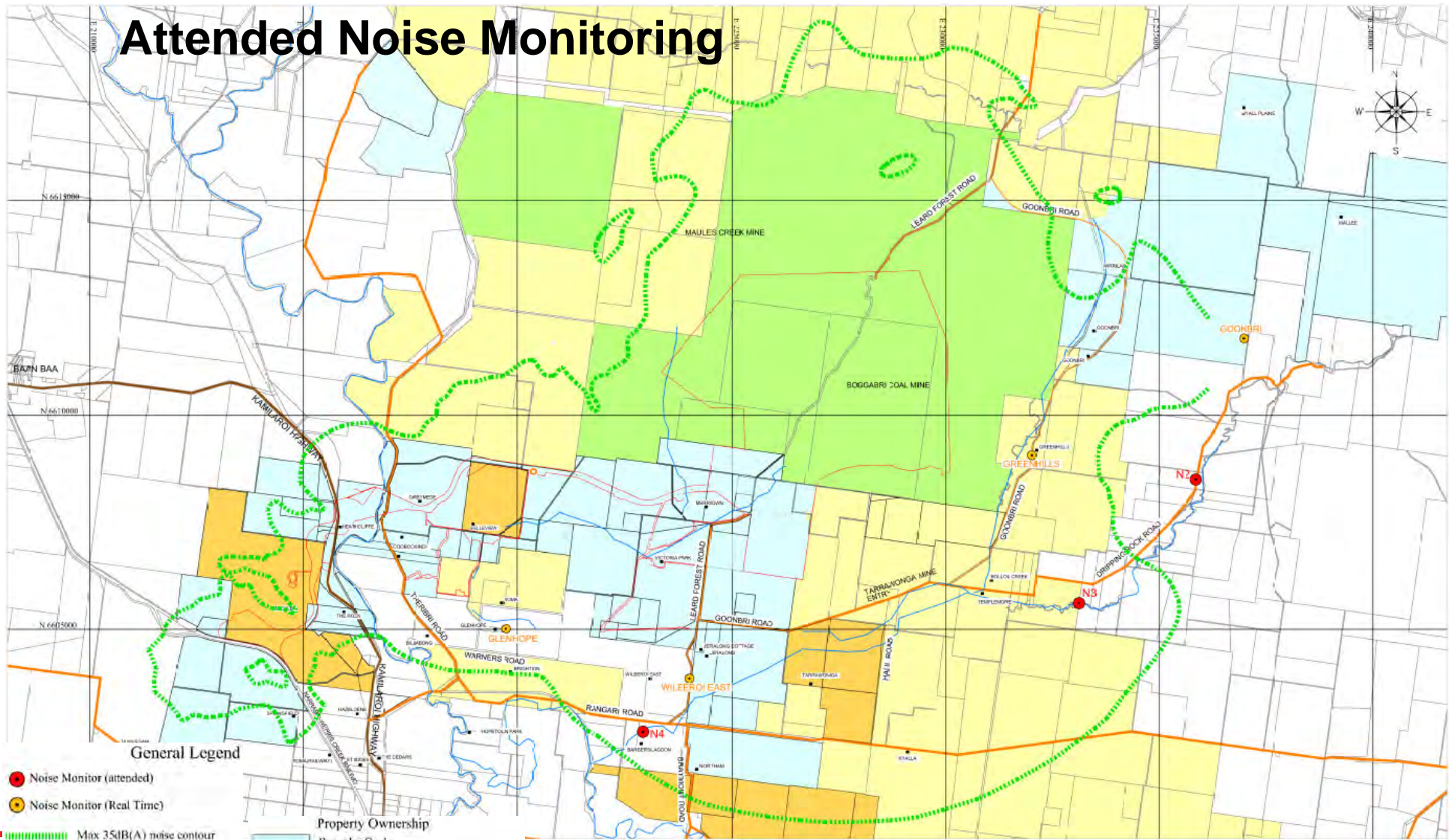




## Monitoring Summary

- Air Quality, Noise and Ground Water monitoring has been undertaken in accordance with Project Approval and EPL requirements.
- No exceedances of Project Approval or EPL limits have occurred in the reporting period.
- Slides provided in pack.

# Attended Noise Monitoring



- General Legend**
- Noise Monitor (attended)
  - Noise Monitor (Real Time)
  - - - - - Max 35dB(A) noise contour
  - Residence / Property name
  - Creek / River
  - Roads
  - Kamilaroi Highway

- Property Ownership**
- Boggabri Coal
  - Boggabri Coal & Whitehaven Coal Mining
  - Whitehaven Coal
  - State Forest
  - Boggabri Coal Project Approval Boundary



## Attended Noise Monitoring

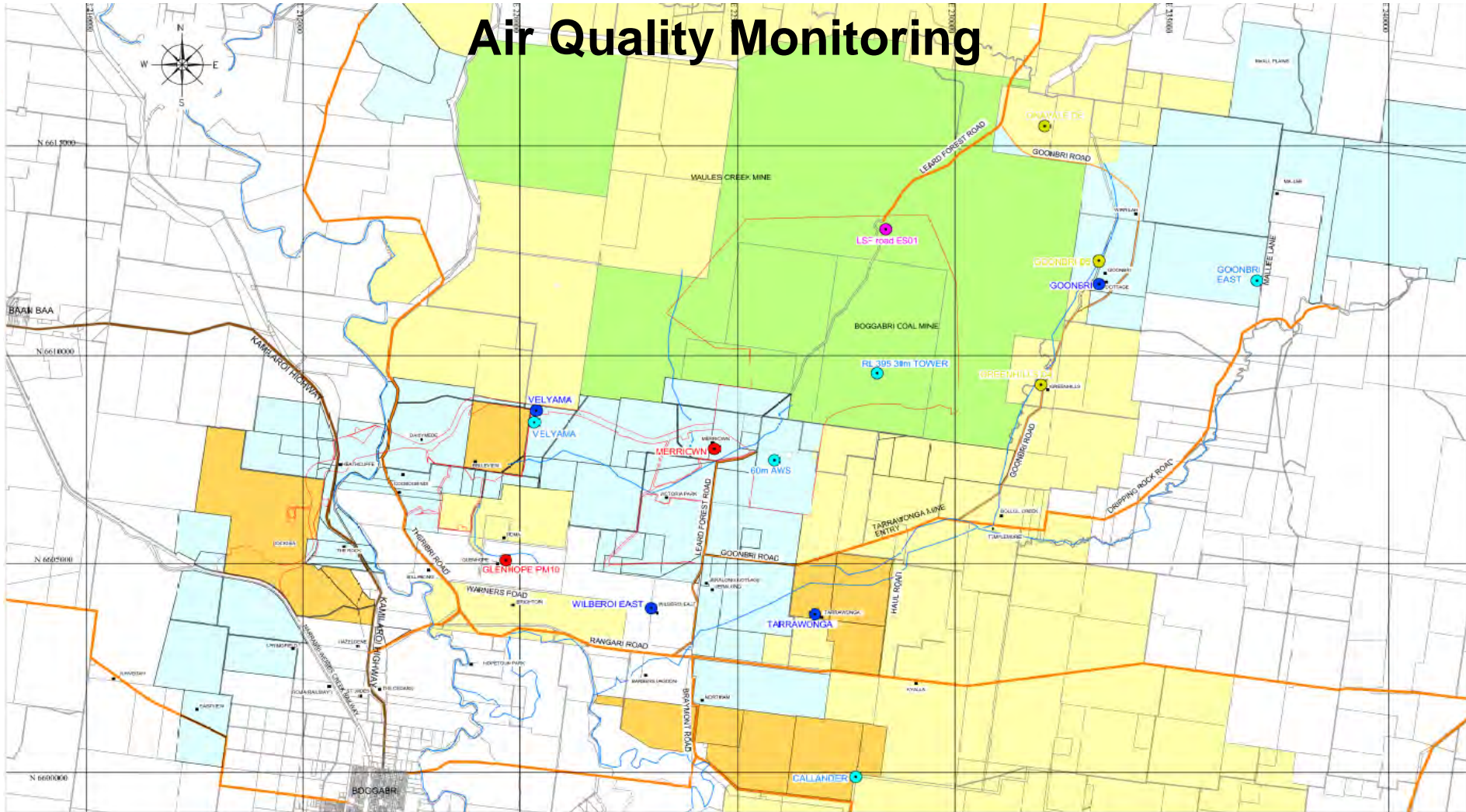
Attended Noise monitoring location	LAeq, 15min Impact Assessment Criterion	Feb - 21	Mar - 21	Apr - 21	May-21	June-21	July-21	Aug-21	Sept-21	Oct-21	Nov-21	Dec-21	Jan-22
Sylvania	35	IA	<25	IA	IA	IA	IA	IA	IA	IA	IA	IA	IA
Picton	35	IA	IA	IA	IA	IA	IA	IA	IA	IA	<25	IA	IA
Barbers Lagoon	35	<20	IA	IA	IA	IA	IA	IA	IA	IA	<20	<20	25

IA: No site noise was audible at the monitoring location

There were no exceedances of EPL or Project Approval criteria during the monitoring. Boggabri Coal has not had an Attended Noise Monitoring exceedance since 2014.

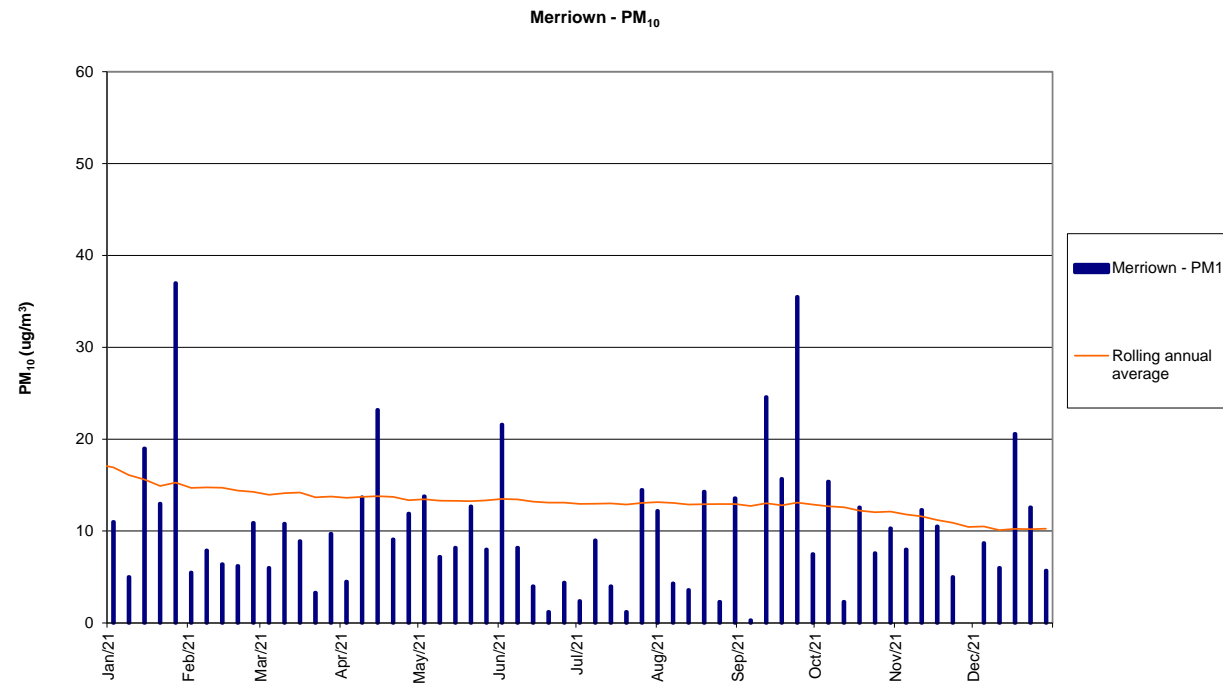


# Air Quality Monitoring

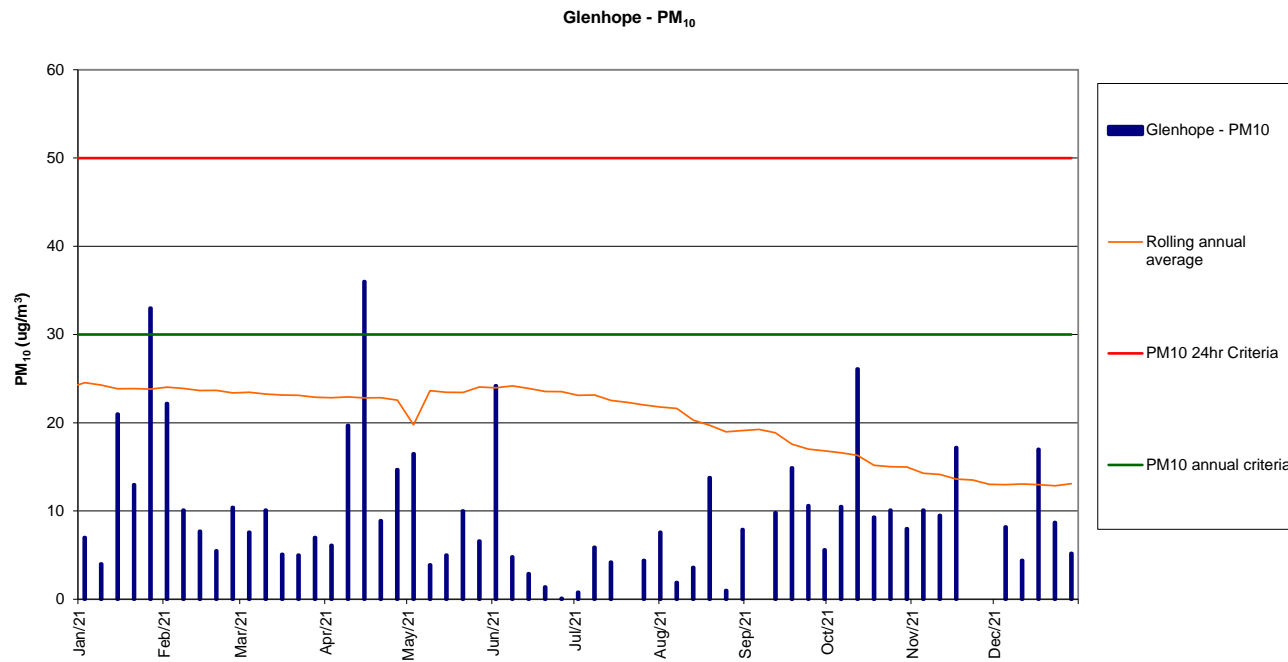


REV	REVISIONS	DATE	General Legend		QUALITY RECORD		SCALE	FILE REF:	<h2>Boggabri Coal Operations</h2> <h3>Air Quality Monitoring Locations</h3>	DRAWING NO:																
							See Grid (5000m)	Air Quality Monitoring (Issued 21/02/18) .dwg		210821b																
<p>Completion of the Quality Record is evidence that Drafting has been verified/checked with the requirements of the Quality Plan. Where the Quality Record is incomplete all information on this drawing is intended for preliminary purposes only as it is uncontracted.</p>			<ul style="list-style-type: none"> <li>Metereological Station</li> <li>TEOM</li> <li>E-Sampler</li> <li>Dust Monitoring</li> <li>High Volume Air Sampler</li> </ul>	<ul style="list-style-type: none"> <li>Residence / Property name</li> <li>Creek / River</li> <li>Roads</li> <li>Kamilaroi Highway</li> </ul>	<table border="1"> <thead> <tr> <th>REVIEW</th> <th>NAME</th> <th>SIGNATURE</th> <th>DATE</th> </tr> </thead> <tbody> <tr> <td>DRAWN</td> <td>MC GARDNER</td> <td></td> <td>11/10/17</td> </tr> <tr> <td>DWG CHECKED BY</td> <td></td> <td></td> <td></td> </tr> </tbody> </table>	REVIEW	NAME	SIGNATURE	DATE	DRAWN	MC GARDNER		11/10/17	DWG CHECKED BY				<ul style="list-style-type: none"> <li>Property Ownership</li> <li>Boggabri Coal</li> <li>Boggabri Coal &amp; Whitesaven Coal Mining</li> <li>Whitesaven Coal</li> <li>State Forest</li> <li>Boggabri Coal Project Approval Boundary</li> </ul>		<p>PLT FILE</p> <p>Air Quality Monitoring (Issued 21/02/18).plt</p>	<p>ORIG. FILE SIZE:</p> <p>A3</p>	<table border="1"> <tr> <th>REV</th> <th></th> </tr> <tr> <td> </td> <td> </td> </tr> </table>	REV			
REVIEW	NAME	SIGNATURE	DATE																							
DRAWN	MC GARDNER		11/10/17																							
DWG CHECKED BY																										
REV																										

# Air Quality Monitoring

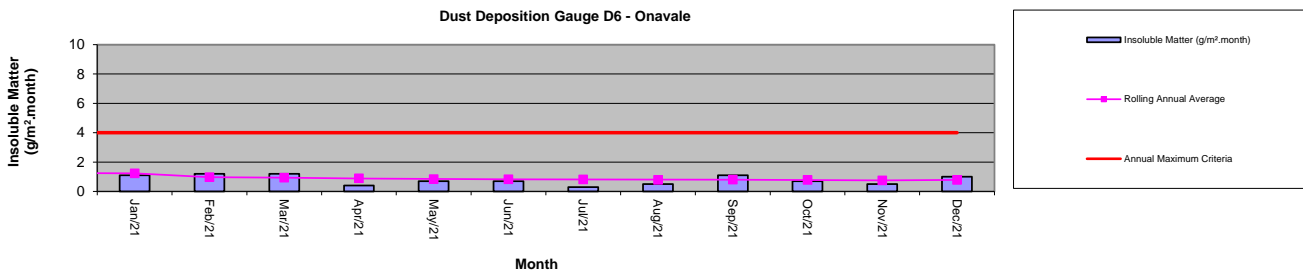
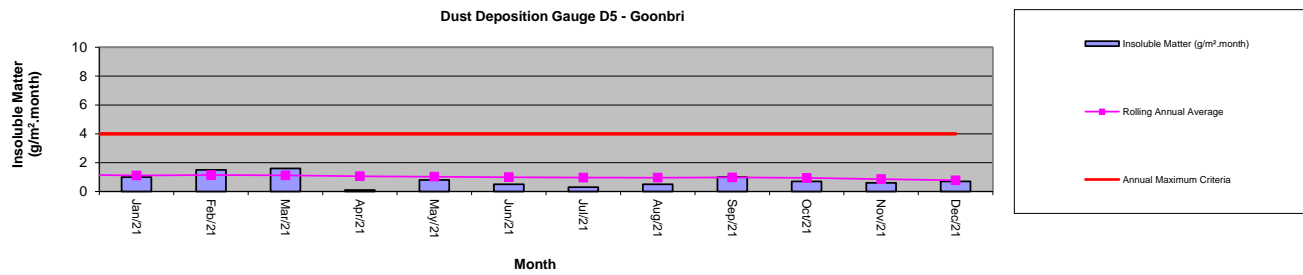
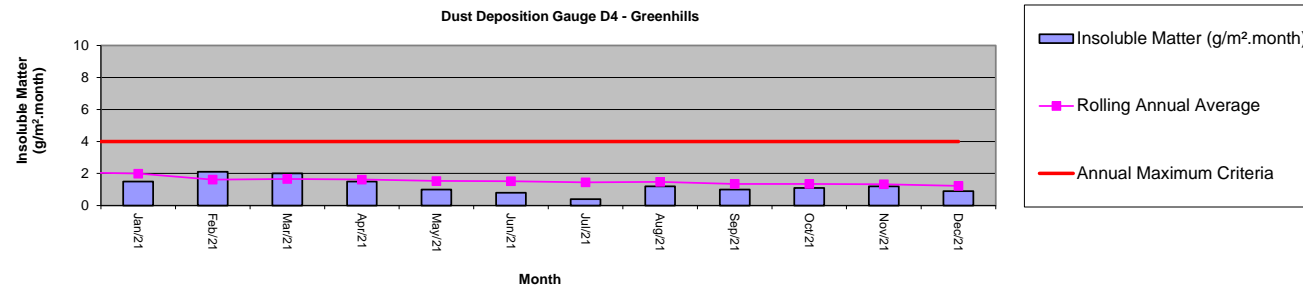


# Air Quality Monitoring

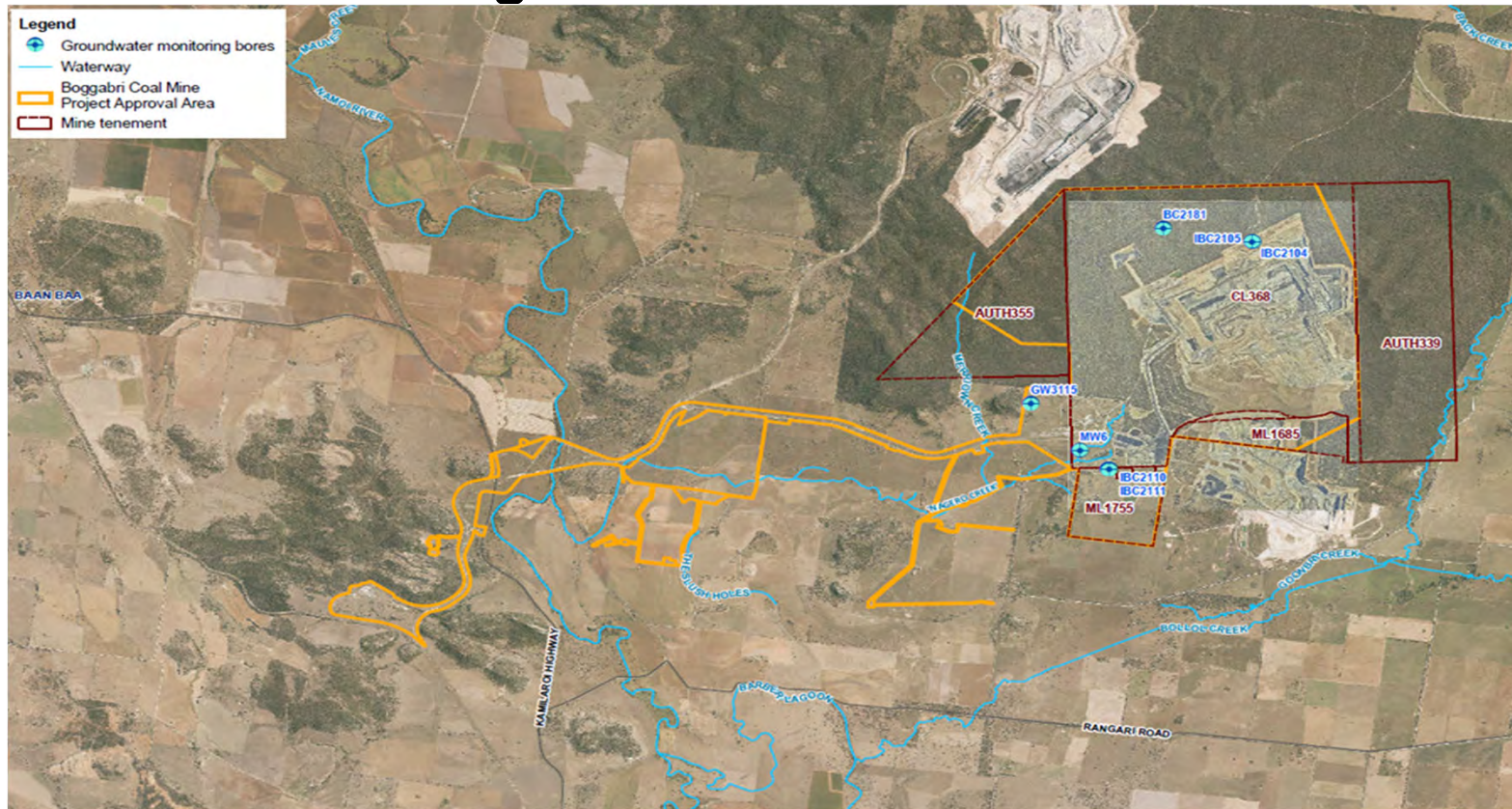




# Air Quality Monitoring



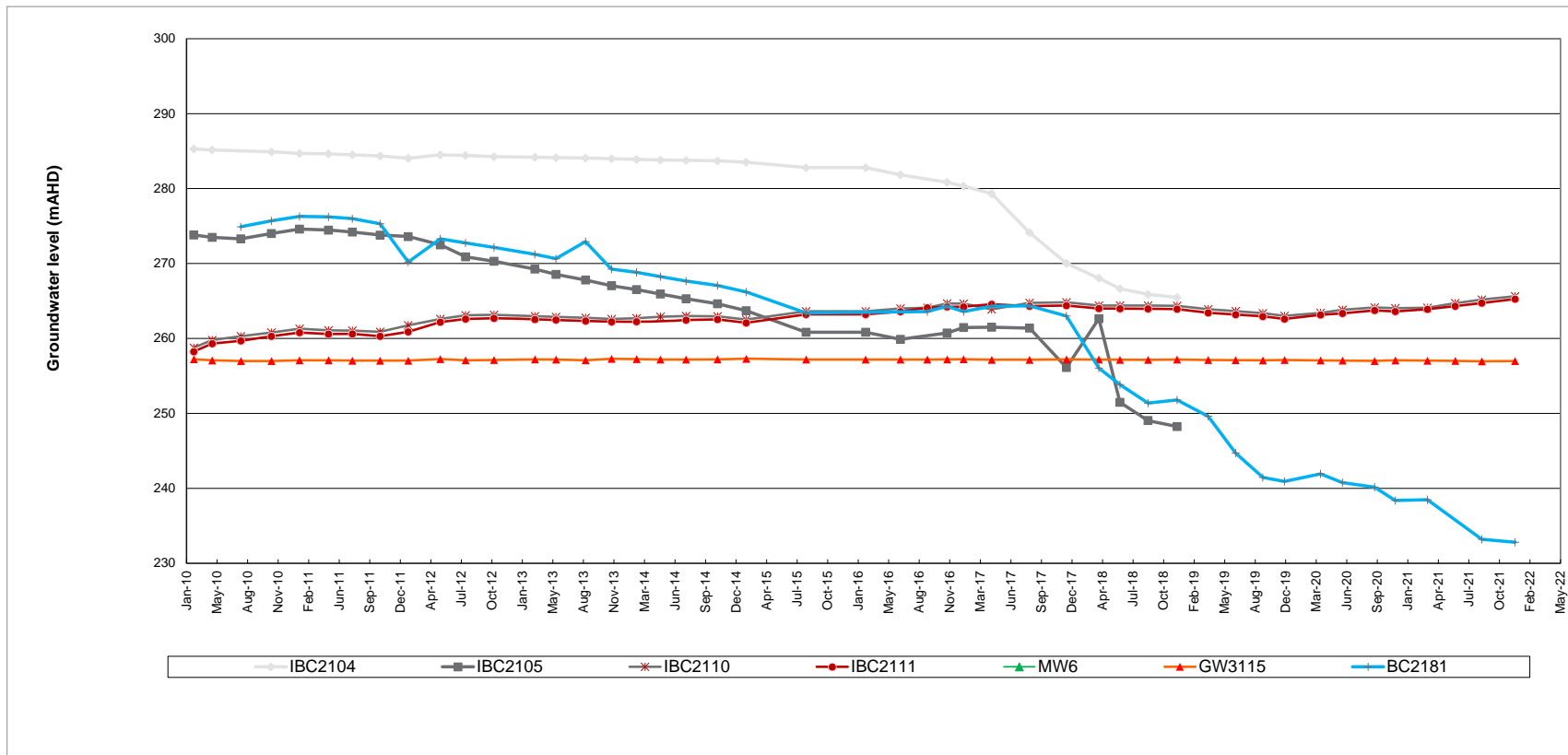
# Groundwater Monitoring







# Groundwater Monitoring



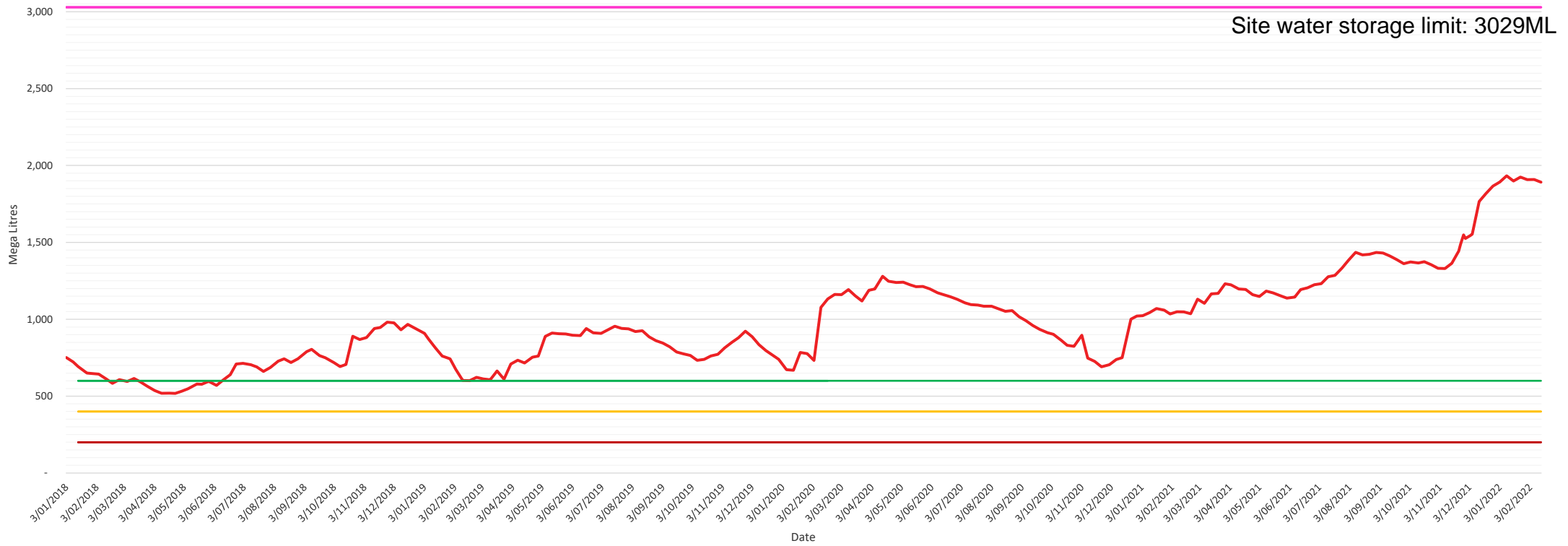


## Bore Extraction Since Previous Meeting

BCOP has extracted 30.26 ML from its borefield since the 4<sup>th</sup> November 2021



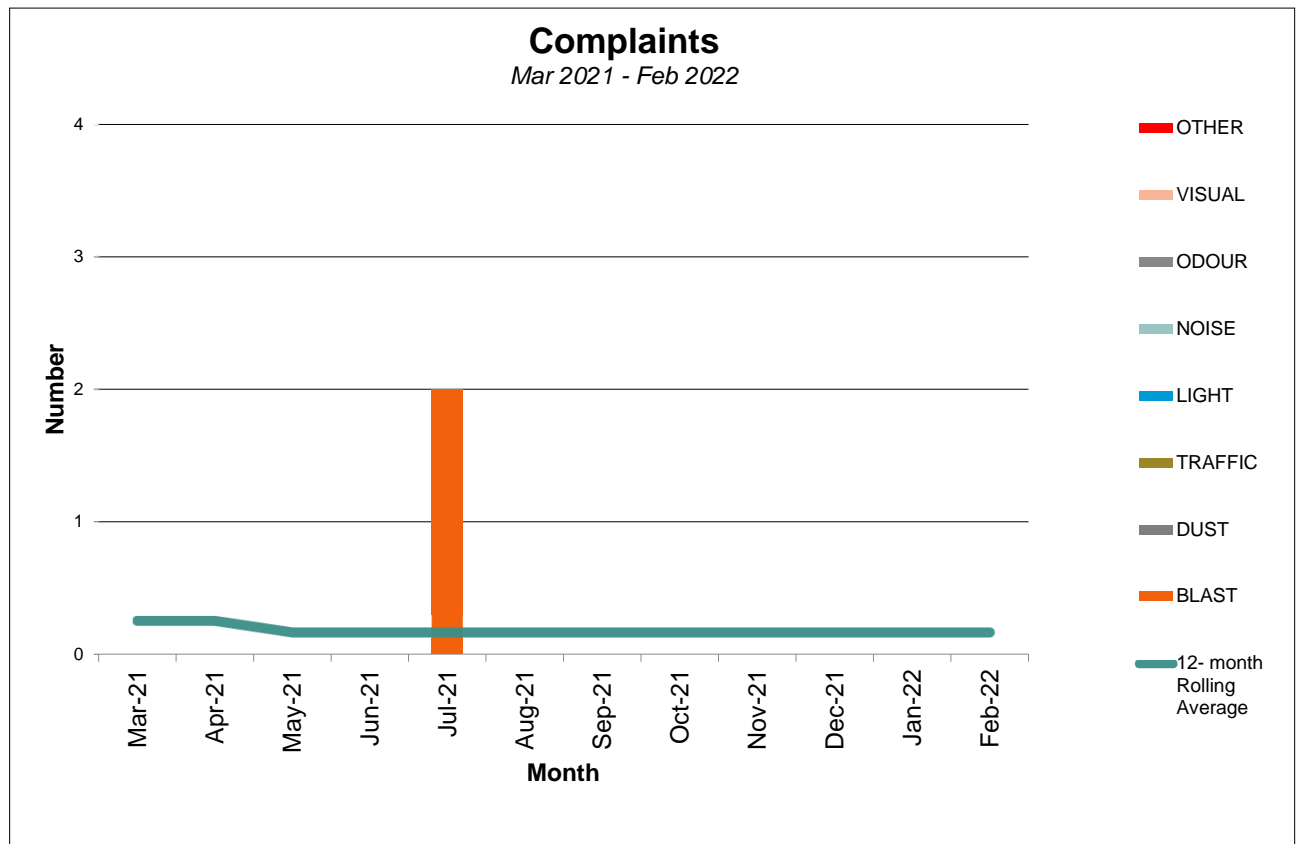
## Site Water Storage





# Community Complaints

No complaints received since November meeting





## General Business





## Biodiversity Offset Areas

- Fencing program ongoing
- 70,000 tubestock ordered for tree planting in 2022 on 'Goonbri', 'Mallee' & 'Myall Plains' offsets.
- Annual biodiversity monitoring activities



## Housing VPA update

- Reviewing options for construction of housing in 2022 in Boggabri
- Discussions to be held with council in Quarter 1
- Costs included in 2022 Capital Budget



## Next Meeting?

