

<b>OVERVIEW</b>			
Meeting	Community Consultative Committee		
Date	31/10/2019	Time	9.30am
Venue	Boggabri Golf Club		
Chairperson	David Ross		
Presenter	Hamish Russell		
Attendees	Tim McDermott (TM), Hamish Russell (HR), Cath Collyer (CC), Ros Druce (RD), Mitchum Neave (MN), Richard Gilham (RG), Robert Kneale (RK), Peter Forbes (PF)		
Apologies	Anthony Margetts (AM), Stewart Dunlop (SD)		
Next Meeting	?Wednesday 19 <sup>th</sup> pm or Thursday 20 <sup>th</sup> am to be confirmed?		
ITEM	AGENDA		
1	Apologies		
2	Declaration of Pecuniary or other Interests		
3	Confirmation of previous minutes		
4	Changes to CCC Membership		
5	Business arising from previous minutes		
6	Correspondence		
7	Company reports and overview		
8	General business/questions		
9	Next Meeting		
<b>Discussion Items</b>			
<p><b>1. Apologies:</b> See above.</p>			
<p><b>2. Declarations of Pecuniary Interests:</b></p> <p>(DR) declared that he is paid a fee for his chairing services. (RG) declared his property is in the zone of affectation</p>			
<p><b>3. Acceptance of previous minutes:</b></p> <p>RD - Would like the previous minutes amended with a note she had taken from last meeting.</p> <p>TM - Reads out note "HR explained that the water would be pumped from the Coobooindi bore (Maximum extraction capability 7ML/day), this bore hasn't been pumped for 6 months, the water will be stored in the tank on the haul road from Therribri to Idemitsu mine site, before being transferred to WHC"</p> <p>MN - Second that the note should be included in the previous minutes.</p> <p>RD &amp; MN - both agreed there were some inconsistency's in the previous minutes regarding who said what.</p> <p>DR - Asked CCC members to review the minutes within the time allocated (2 weeks).</p> <p>RG – attended meeting at 9.50am</p>			

**4. Business from previous minutes:**

HR - Rehab visit to occur on Wednesday 20<sup>th</sup> November. Will include a visit of the core shed to view core samples with a geologist and a tour of the HV workshop to view some trucks and noise attenuation technology.

PF: Tour will occur in the morning of the 20<sup>th</sup> of November, around 10:00am. Please let BCOP know if you can't make it.

HR – Provided a copy of the tree clearing report, referred to table 3.5 in the presentation

**Water sharing**

HR – Discusses talks about “the gap” in allocation that was mentioned in previous CCC meetings. Bore field limits are in approved management plans and have been accepted by DPI water. Annual extraction limit is 7ML a day over the year which is 2555ML total. If we don't need to extract that full amount there is opportunity to share it. Staying below the 2555ML annual limit, 410ML was shared with MCC, which still required to have the licence and approval.

RD – Have you finished sharing water with MCC?

HR – Yes, Finished in mid-October. A few weeks ago.

MN – Did BCOP's initial approval include water allocation?

HR – Initial approval did not contemplate groundwater allocation, only possessed a river licence.

MN – When BCOP got its initial approval, MCC did not exist. Did BCOP seek an amendment to approval knowing that MCC would want to share water eventually?

HR – No, Approval came through MOD 5. We have been using less than the 2555ML/year allocation due to changes in the source of water. BCOP has a 2 billion litre dam that reduces pressure on the borefield. MOD 5 was only submitted for our own use. The BTM has always contemplated water sharing though.

RD – What is BCOP's river allocation

HR – Around 200-300 units of lower Namoi general security water access licence. Will have to check.

PF – BCOP does no longer rely on the river.

HR – The allocation of river water varies from year to year.

**Status of the Early Learning Facility (ELF)**

PF - BCOP has now received Narrabri Shire Council (NSC) approval for the ELF. Minor details and the final design are currently being finalised and hopefully will have a slab poured by the end of the year and construction to begin in a few months.

CC: Was very happy with BCOP's discussions about the ELF with NSC

MN – 30 homes have been promised for the region. How many homes does the ELF count for?

PF - Houses for the region to drop by 2 or 3 overall due to the construction of the ELF.

MN – How much will the ELF cost BCOP?

PF – Roughly between \$1-2 Million.

**List of new species since the EA survey**

HR – Explained how ecologists discovered a new plant species in 2014. A small seasonal vine.

RD – Was familiar with the species, asked what BCOP’s plan was when they encounter plant in future tree clearing.

TM – Explained there was an appendix in the Biodiversity Management Plan regarding details of this.

RD – Requested more information and a copy of the plan.

**Offsets**

RD – How have the offset’s been progressing?

PF – Currently in the process of conservation, stewardship and national park agreements.

RD – would like a list of each property and how it is progressing as well as a rough timeline.

PF – Significant work is happening in the offsets to achieve good environmental outcomes and that the business is still actively managing these property’s through tree planting, pest and weed control, fencing etc....

RG – Referring to the map. Why are there big pockets in the middle of the offsets? Why isn’t all the land offsets?

PF – Referring to the map, not all land that BCOP owns will be offsets. BCOP was not going to offset every hectare it owns, some of this land will be farming country.

**Offsets and Koala Recovery:**

HR: Explains how refencing, tree planting, weed/pest management, de stocking and monitoring are all ways that BCOP is actively managing its offset property’s, which forms part of the Koala recovery and management objectives.

MN – How many trees have survived during the drought?

PF – Around 50% tree survival rate overall. Explains how it is common practice to plant more trees than is required. BCOP has to commit 2 years in advance to get the seedlings they require to plant. Explains how it is like a conveyor belt and even though it is a drought the trees still need to be planted.

HR – Explains that BCOP must plant trees during drought

PF – Water around 100,000 trees, explains how smaller trees seem to have better success rates.

MN – Is *Tylophora linearis* located in the offset areas?

HR – Will find a map

HR – Explains how tree survival rate depends on soil type and other factors, which varies greatly throughout the offsets.

RD – Where did BCOP get a list of what tree species local Koala’s like?

HR – Ecologists advise on which trees are appropriate for Koala’s in the region.

RD – Asks if the trees are specific to this region? The koala foundation has a list of appropriate trees.

HR – Yes is logical. The ecologists have reviewed all the local Koala Recovery Plans to find the best suited species to the region.

RD – Does BCOP have any plans for watering points for Koalas?

HR – Not aware of any plans but is a good idea and will have a look.

CC – Does BCOP conduct soil testing prior to planting trees to make sure trees are compatible to where they are being planted? Any additives added to the soil?

HR – Soil testing does occur, and the results do come into consideration when planting trees e.g. types and density. Not aware of any additives added to the soil on offsets, although this does occur on trees in the rehab.

PF – Simon Buchanan is the soil scientist.

**5. Correspondence:**

NSW Department of Planning & Environment.

- Warning letter in relation to a blast exceeding 120dBL.

CC – What date did this blast exceedance occur.

PF – Occurred on the 21<sup>st</sup> of August 2019.

CC – Commented how TCM had a blast exceedance in September.

## 6. Company Reports & Reviews:

### Presentation

#### Noise Monitoring:

HR – Showed locations of monitors and that no exceedances occurred and explained the results table.

### Blast Monitoring

HR – Further explained the blast exceedance.

RD – Did BCOP self report the blast exceedance?

HR – Yes, was reported by BCOP to the regulator.

RG – Commented how “everyone” in town had felt the blast, but he did not.

MN – Requested clarity of the date of the blast exceedance.

HR – Explained how there is a very detailed pre blast procedure with a lot of checklists.

PF – Detailed how it was a very normal shot and BCOP hired an expert to investigate all the data to figure out the cause, which could have been a very high sheer weather event. Stated that the mine does have very good processes regarding blasting.

CC – Commented that there was a blast exceedance ‘years ago’.

RG – Stated that blasting has come along way since previous years.

### Air quality monitoring:

HR - Refreshed members on the location of the monitors. Stated that the map was to be updated when the management plans were. Stated we have a lot more monitors than we are required to.

RD: Did BCOP update there EPL licence for the extra monitors?

HR: Yes, installed a lot more monitors and refers to the map. States we have 3 or 4 more monitors more than we need.

MN: Are there any monitors around Gunnedah or further afield in surrounding areas to pick up smaller particles which travel further.

PF – The Namoi Valley Air Quality Monitoring Network is in Gunnedah and Narrabri to look at the regional effects. The Hunter Valley has the Hunter Valley Air Quality Monitoring Network which is what the Namoi Valley network is based off. Namoi Valley Network is still in progress of being set up.

HR – Discussed depositional dust gauges, explains how Onavale is highly contaminated.

### Groundwater monitoring

HR - Referring to the groundwater levels that are dropping in the graph are hardrock aquifers and the bores on the alluvium have remained constant, have been dropping slightly recently due to the drought. Explained that the hard rock aquifers have very low moisture levels and often the water doesn’t make it to the bottom of the pit.

CC: Where is the MW6 monitoring bore?

HR: Near the main office, next to Leard Forest Road.

RD: Asks if the next graph can have differentiation between which locations are in the hard rock and which are on the alluvium to make it easier to understand.

### **Water Storage**

HR – Discussed water storage trends on site. Currently around 760ML stored on site.

PF – Explains drop in water storage was during a time when the bores were being commissioned to understand the effects of these.

HR – Comments on how BCOP is trying to consolidate water supply into a few large dams to reduce effect of evaporation. States how it is preferable to store water in the ground, but a base supply must be maintained on site.

CC – Would BCOP still use the bores if the river was flowing and extraction was possible?

HR – Explains how easy the process has become to withdraw water from the ground, but it is more expensive.

PF – States there would be a lot of effort for the company to extract river water.

MN – How did the infrastructure sharing work during the water sharing?

HR – BCOP had to share infrastructure with MCCM to share water. Stated that BCOP had now shared water with TCM and MCCM.

CC – Was there a fee involved during the water trading?

HR – There were commercial arrangements in place.

PF – States that before sharing water or doing any activity, BCOP ensures that is firstly legal, and then questions what the business imperatives are.

MN – Can other mines use BCOP property to put their pump on to use their own water allocation?

HR – Yes, a lot of stuff has to happen in the background though and it has to be lawful.

PF – If it is lawful and there is a business case then a business may do it. Further states that businesses swap and do deals all the time.

### **Rainfall**

No comments

### **Community and complaints**

HR – No Complaints.

MN – Does the ‘1800Boggabri’ complaint line exist and work?

HR – Yes and it works. It was demonstrated and it worked

PF – It works, occasionally there have been issues, these are corrected immediately.

### **7. General Business.**

CC – Where is Dan Martin?

PF – He is in a new role, Senior Approvals Specialist reports to Brisbane. Still based in Boggabri. He will be at the CCC occasionally.

RD – Who is the environment representative now?

PF – Hamish will be the focal point, he has taken on Dan’s old role. Looking forward BCOP will be looking for a new enviro to replace Hamish. Overall a good move for everyone.

RG – Stated that the traffic on the gravel road is getting much worse, especially on Boston St.

PF – BCOP takes strong action against people travelling the wrong way to work.

RG – Also stated that the maps are out of date. (re offset property maps & attended noise monitoring sites)

HR – Will update the maps along with the management plans.

DR – Explained that the CCC guidelines require the group to review and reflect over the last 12 months on the big issues, and to look forward to the next 12 months. Due to time restrictions, this will be pushed to the February CCC meeting.

MN – Is there a time limit on how long we can stay on the CCC for.  
 DR – Explains how he appreciates the time of everyone involved in the CCC, there is no timeframe about how long you can be on a CCC for. Can be removed due to lack of involvement or behaviour.  
 MN – Gives group an update on the Red Chief Land Council. Is currently going through change with no CEO or chair person and is currently in limbo. MN was elected back on the board.

MN – An indigenous person was removed from the CCC, will they be replaced?  
 DR – CCC guidelines state that the council appoints a CCC representative. Explains how they cannot be an employee or a contractor of BCOP. Advertisements will be put in the paper if positions need to be filled. MN and DR to discuss another indigenous CCC rep.

CC – Asked If BCOP was still experiencing union strikes and wanted to know the status and how it was going to affect the community.  
 PF – Explained how BCOP was currently in the middle of an industrial dispute as there was a new EA required. Members of the CFMMEU have been taking protected industrial action even though the business believes the offer is fair and generous. Main issue of the CFMMEU is arbitration which the business is very reluctant to include, explains how it is an outdated mining condition due to the fact it cause more issues than it resolved. Some union members are staying behind to work with a small contractor work force, so mine is still operating. Cannot see a foreseeable end to striking.

MN – Are CCC members invited to attend the Christmas party?  
 PF – No, we may have a dinner.

HR – explains how he is currently in discussion with SBS to have ‘The Kamiloroi’ documentary on SBS on NITV.

**8. Next meeting**

Wednesday 19<sup>th</sup> February at 2pm.  
 Boggabri Coal Training room.

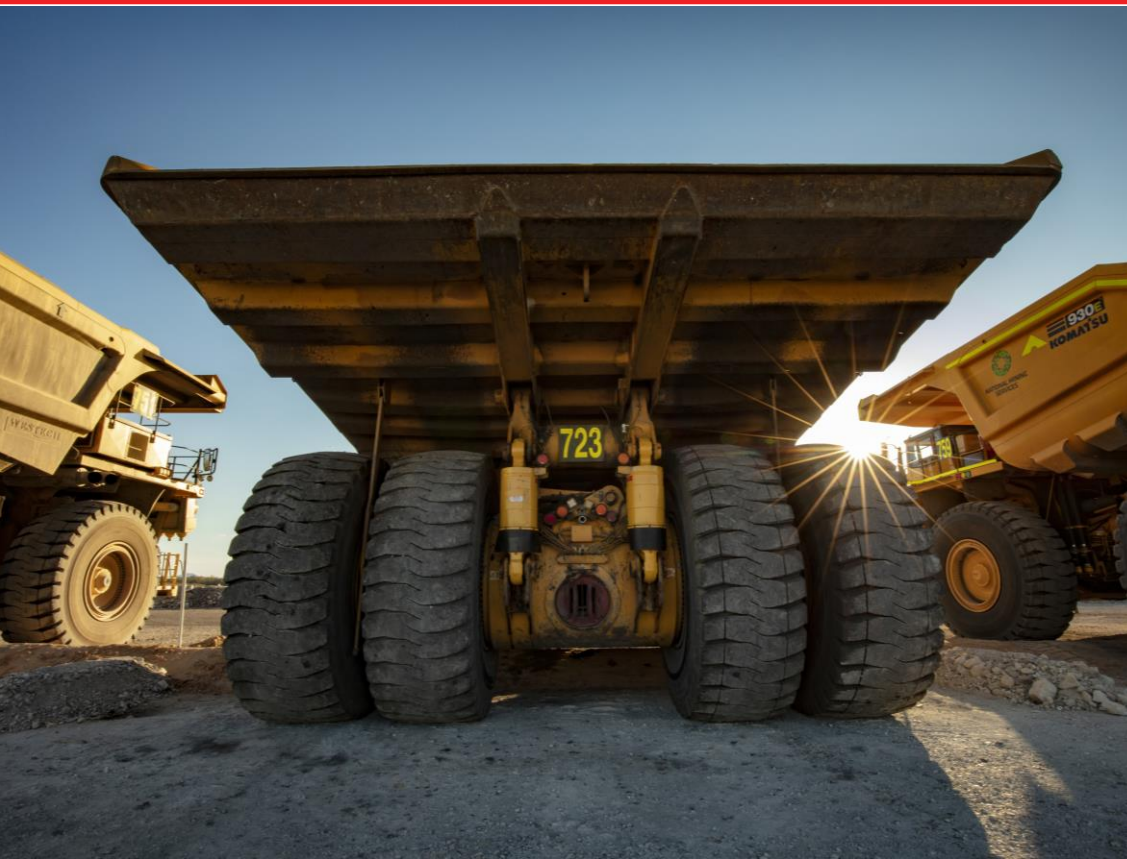
CC – States how she will be unable to attend if it is in the afternoon. Thursday 20<sup>th</sup> am will be considered.

Actioned against	Action to be done
HR	What is BCOP’s River allocation.
BCOP	Find the plan for <i>Tylophora linearis</i> found in the forest.
BCOP	List of offset property’s and how they are progressing, provide a rough timeline for each.
BCOP	Find out where <i>Tylophora linearis</i> occurs in the offsets.
BCOP	Look into watering points for Koala’s on offset’s.
BCOP	Provide a date and more details about BCOP’s blast exceedance on the 21 <sup>st</sup> August 2019.
BCOP	Differentiate between bores in the hard rock and on the alluvium in groundwater monitoring graph.



# CCC Meeting October 2019

31<sup>st</sup> October 2019



# Agenda

October 2019

- Confirmation of record keeping
- Apologies
- Declaration of pecuniary or other interests
- Confirmation of minutes
- Business arising from previous minutes
- Correspondence
- Company reports and overview
- General business
- Next meeting



# Business Arising from Previous Minutes.

Actioned Against	Action to be done
RD	To give questions to DM in advance of rehab visit
BCOP	Organise field trip to visit rehab area and look at noise attenuation equipment on trucks as well as Core Shed to see core samples before next meeting
DM	Provide a copy of tree clearing summary report
BCOP	Provide a list/photos of new species since EA surveys
BCOP	Give outcome for DOEE Show Cause at next meeting.
BCOP	Organise visit to Core Shed with geologist to coincide with rehab visit
BCOP	Calculate total area held in offset properties
BCOP	Update on status of ELF
DM	Progress of the koala recovery – Rehabilitation and Offset Management

# Boggabri Coal tree clearing report

**Table 3.5**      **Animals encountered during clearing operations.**

**Number of individuals recorded**

**Guild**

**Relocated**

**Observed**

**Dead/ethanised**

**Total**

Reptiles

255

150

18

423

Microbats

68

218

17

303

Oher Mammals

1

13

0

14

Total

324

381

35

740

## Water Sharing

- 
- Project approvals for each of the Boggabri, Tarrawonga and Maules Creek sites (BTM) contemplate the potential need for mines to share water/transfer water between sites
  - The BTM Water Management Strategy reflects this potential requirement. The most recent approved revision of the BTM Water Management Strategy accommodates this requirement.
  - Water sharing arrangements within the BTM Complex are contemplated in each mines Project Approval and a water sharing occurred between Boggabri Coal and Tarrawonga Coal in 2018 and Maules Creek Coal Mine in 2019
  - As part of the sharing arrangements appropriate water licences and sufficient allocation are required to be held to accommodate the volumes being shared. The process of water trading is overseen by WaterNSW

## Status of Early Learning Facility

- 
- The ELF has been approved by Narrabri Shire Council
  - Boggabri Coal met with the architect/project manager and reviewed the design details with the proposed operator
  - Next steps; awaiting final designs for sign off, issue tender, select successful tender and start construction.

# List/Photo's of new Species since EA survey

Only 1 species has been found:

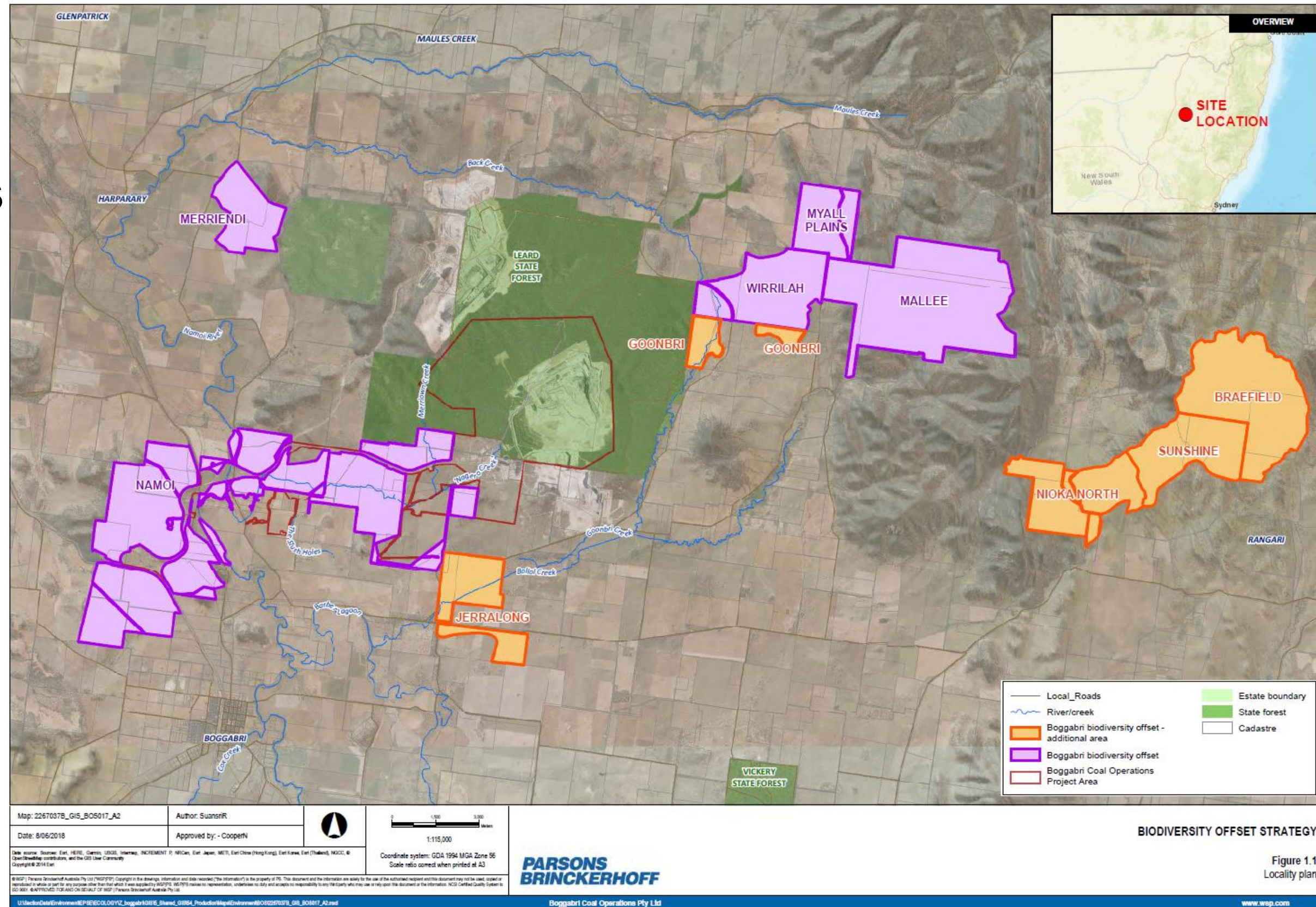
*Tylophora linearis* identified within the project boundary and 2014 clearing area during seasonal surveys undertaken between May and July.



出光 IDEMITSU

# Offset Property's

10,919.2ha held over 10 properties.



## Offsets rehabilitation and koala recovery

---

The work on koala recovery is occurring inside the Offsets and Biodiversity Management Plans

Extensive tree planting (in the order of 750000) in offsets and rehabilitation areas. Including koala preferred species

Management of pest species from offsets and rehabilitation areas

Fencing and stock exclusion from specific areas

Fauna and flora monitored inside the offsets and rehabilitation areas

# Correspondence

---

## **NSW Department of Planning, Industry & Environment**

- Warning Letter in relation to a blast exceeding 120dB

## **NSW Department of Planning, Industry & Environment Resources Regulator**

Nil

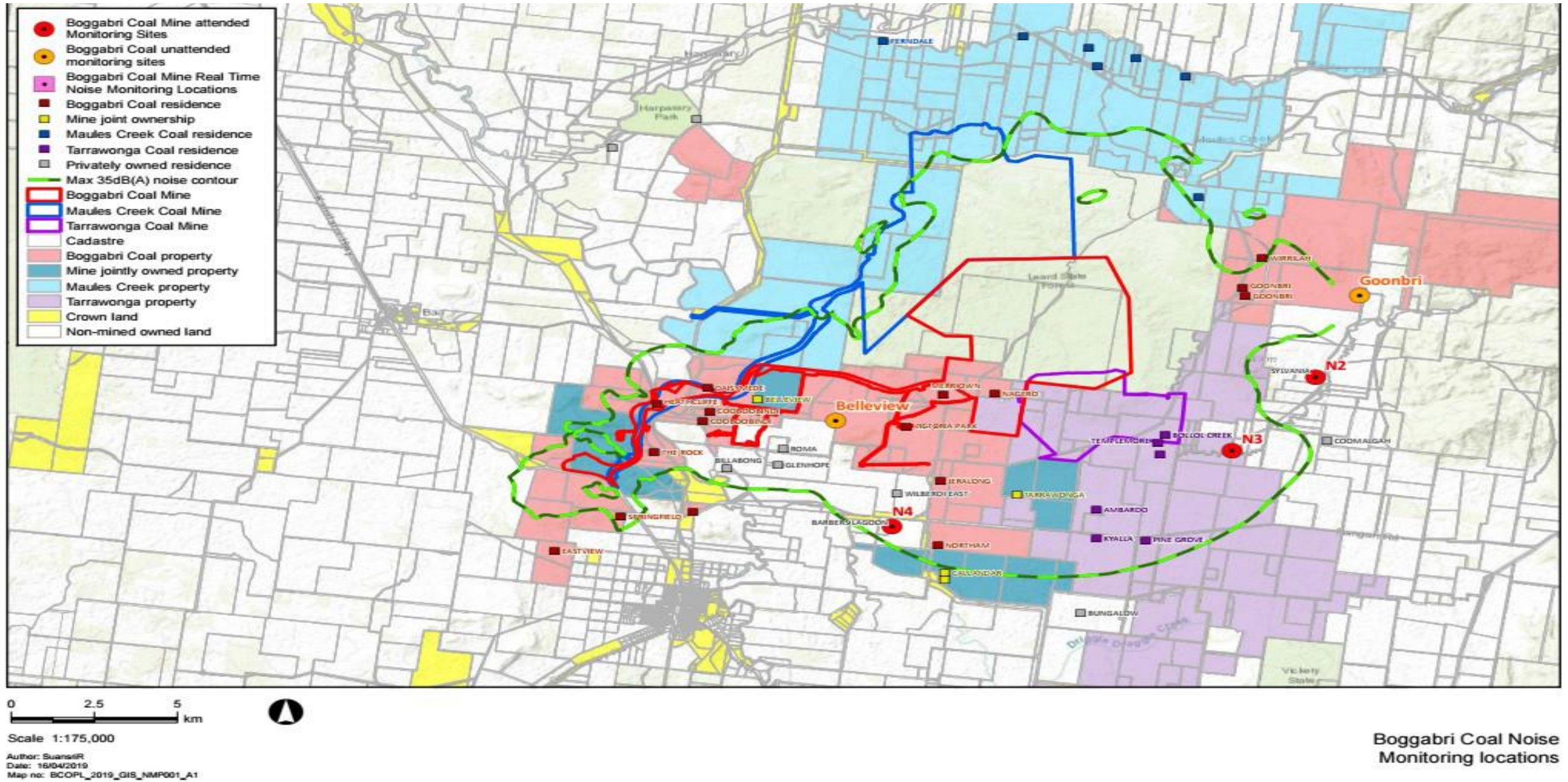
## **Department of the Environment and Energy**

## **Environment Protection Authority (EPA)**

Nil



# Attended Noise Monitoring



Boggabri Coal Noise Monitoring locations

# Blast Monitoring

---

Incident 123dB at Wilberoi East – Blast Monitoring Location. Exceeded 120dB

No complaints

Reported to Regulators

Investigated – indicated that the blast should have been 110dB, shot had no issues, meteorological conditions enhanced noise from blast

# Attended Noise Monitoring

---

Monthly monitoring conducted in August, September and October 2019.

## Night-time monitoring

Carried out in accordance with requirements of the EPL and Australian Standards

There were no exceedances of EPL or Project Approval criteria during the monitoring.

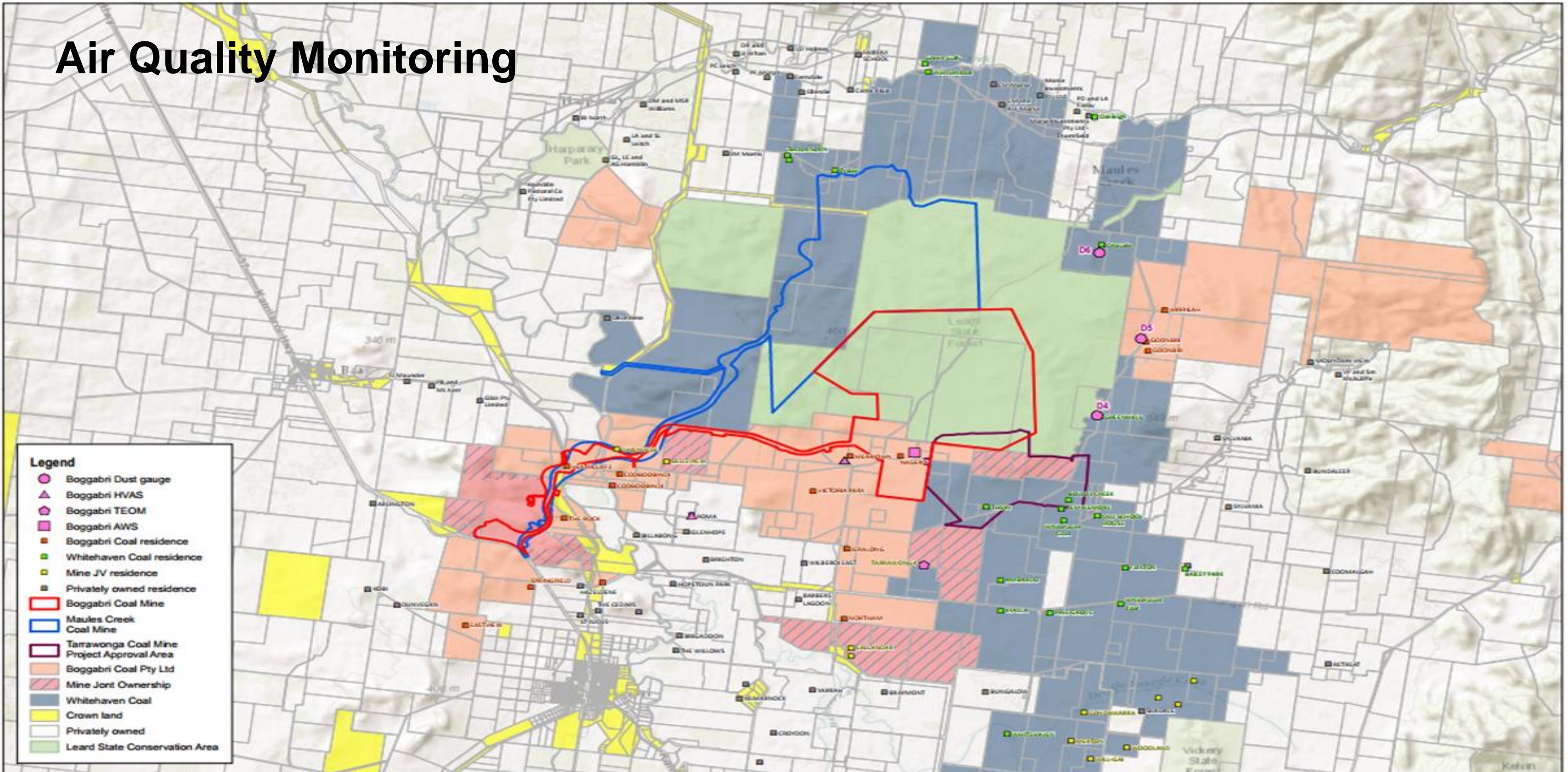
# Attended Noise Monitoring Results - 2019

Attended Noise monitoring	LAeq, 15min Impact Assessment Criterion	Jan- 19	Feb- 19	Mar- 19	Apr- 19	May- 19	Jun- 19	Jul- 19	Aug- 19	Sep- 19	Oct- 19	Nov- 19	Dec- 19
Sylvania	35	IA	IA	IA	IA	<20	IA	IA	IA	IA	IA		
Picton	35	IA	IA	IA	IA	IA	IA	IA	<30	IA	IA		
Barbers Lagoon	35	IA	<30	IA	<25	<25	IA	IA	IA	IA		NM	

IA: no site noise was audible at the monitoring location

NM: Some site noise was audible but could not be quantified.

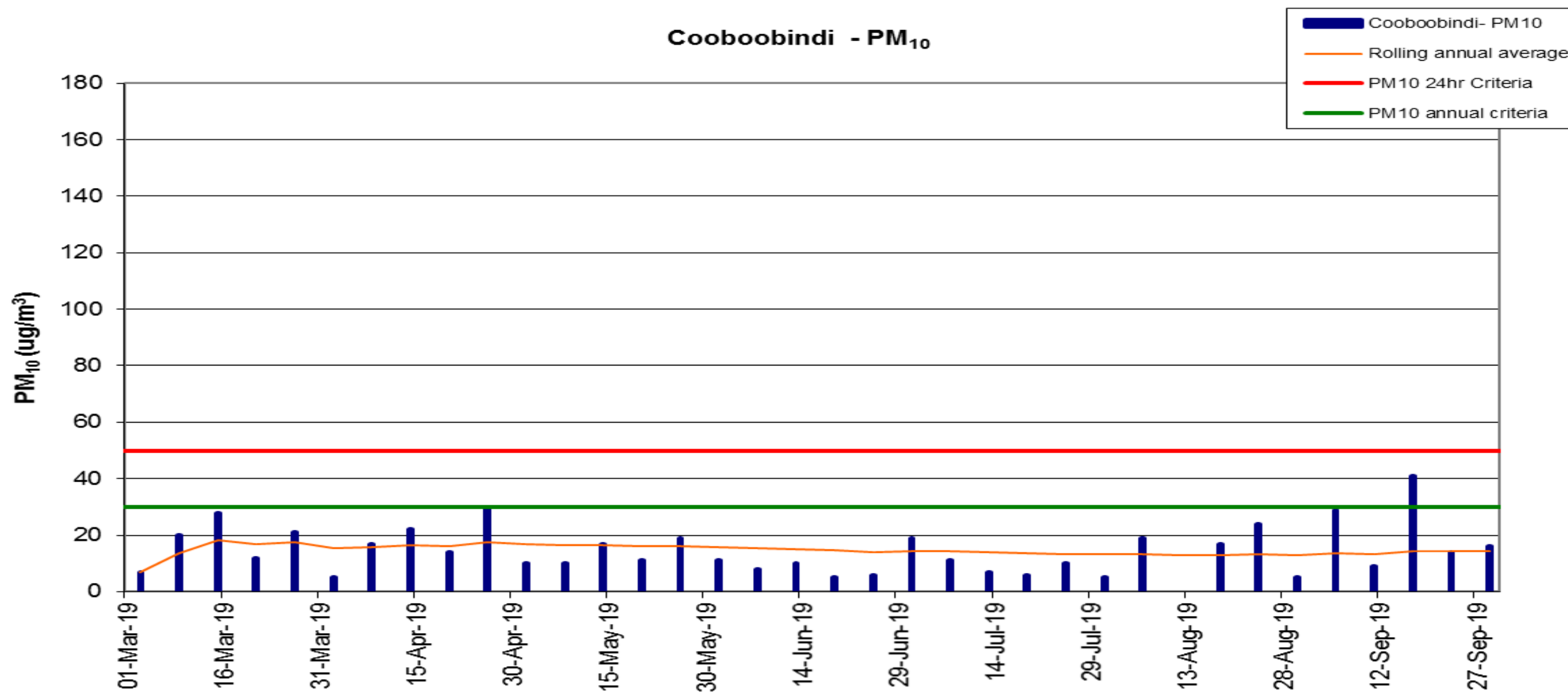
# Air Quality Monitoring



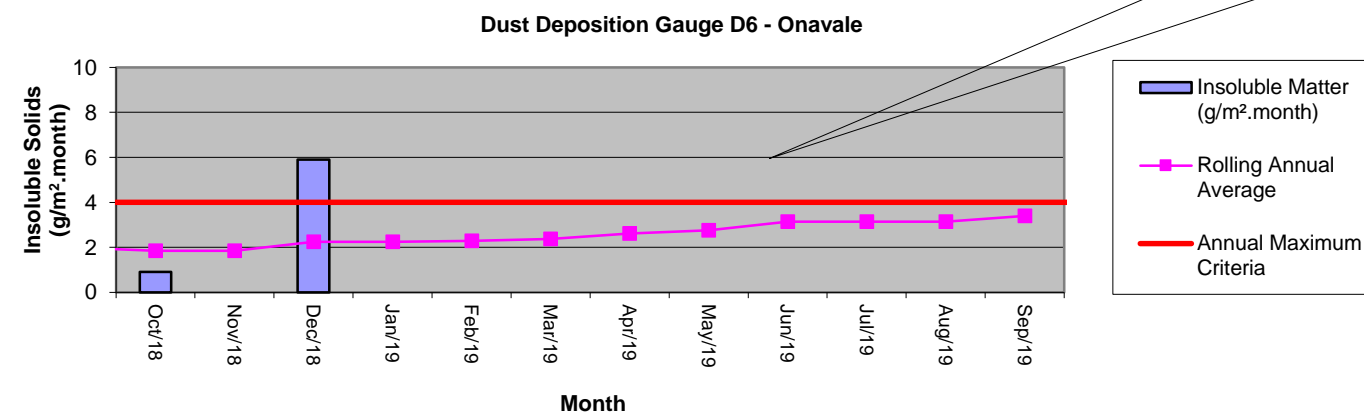
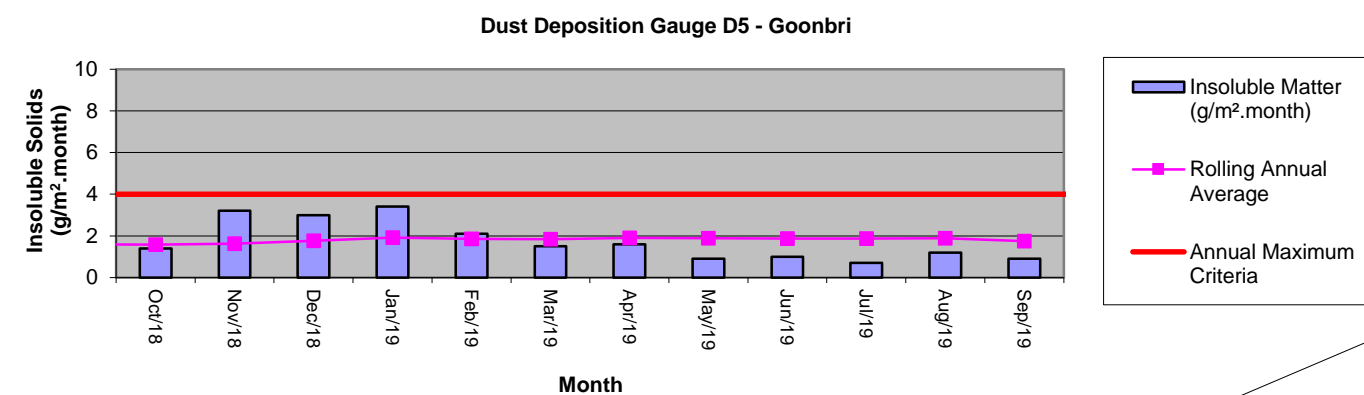
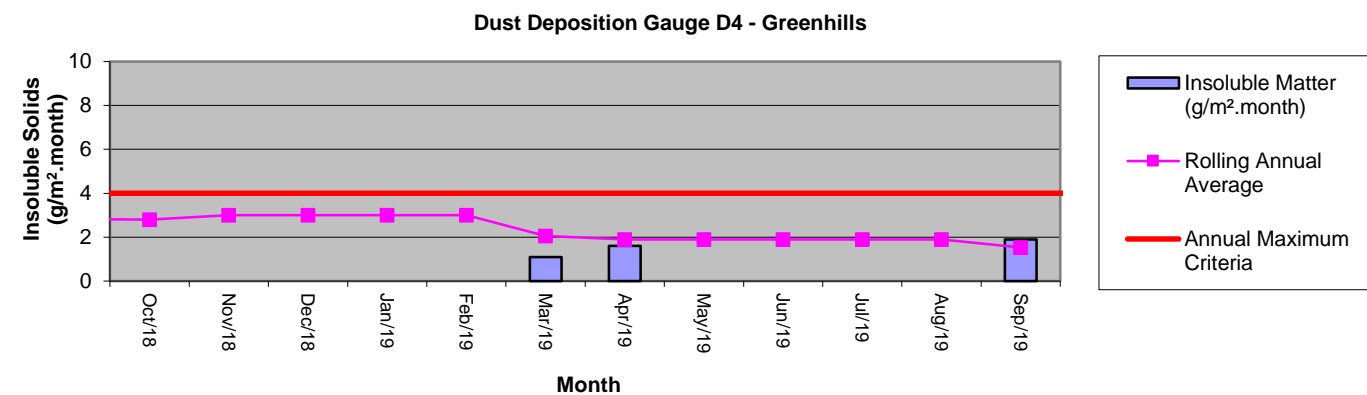
**Legend**

- Boggabri Dust gauge
- ▲ Boggabri HVAS
- ◆ Boggabri TEOM
- Boggabri AWS
- Boggabri Coal residence
- Whitehaven Coal residence
- Mine JV residence
- Privately owned residence
- Boggabri Coal Mine
- Maules Creek Coal Mine
- Tarrawonga Coal Mine Project Approval Area
- Boggabri Coal Pty Ltd
- Mine Joint Ownership
- Whitehaven Coal
- Crown land
- Privately owned
- Lead State Conservation Area

# Air Quality Monitoring

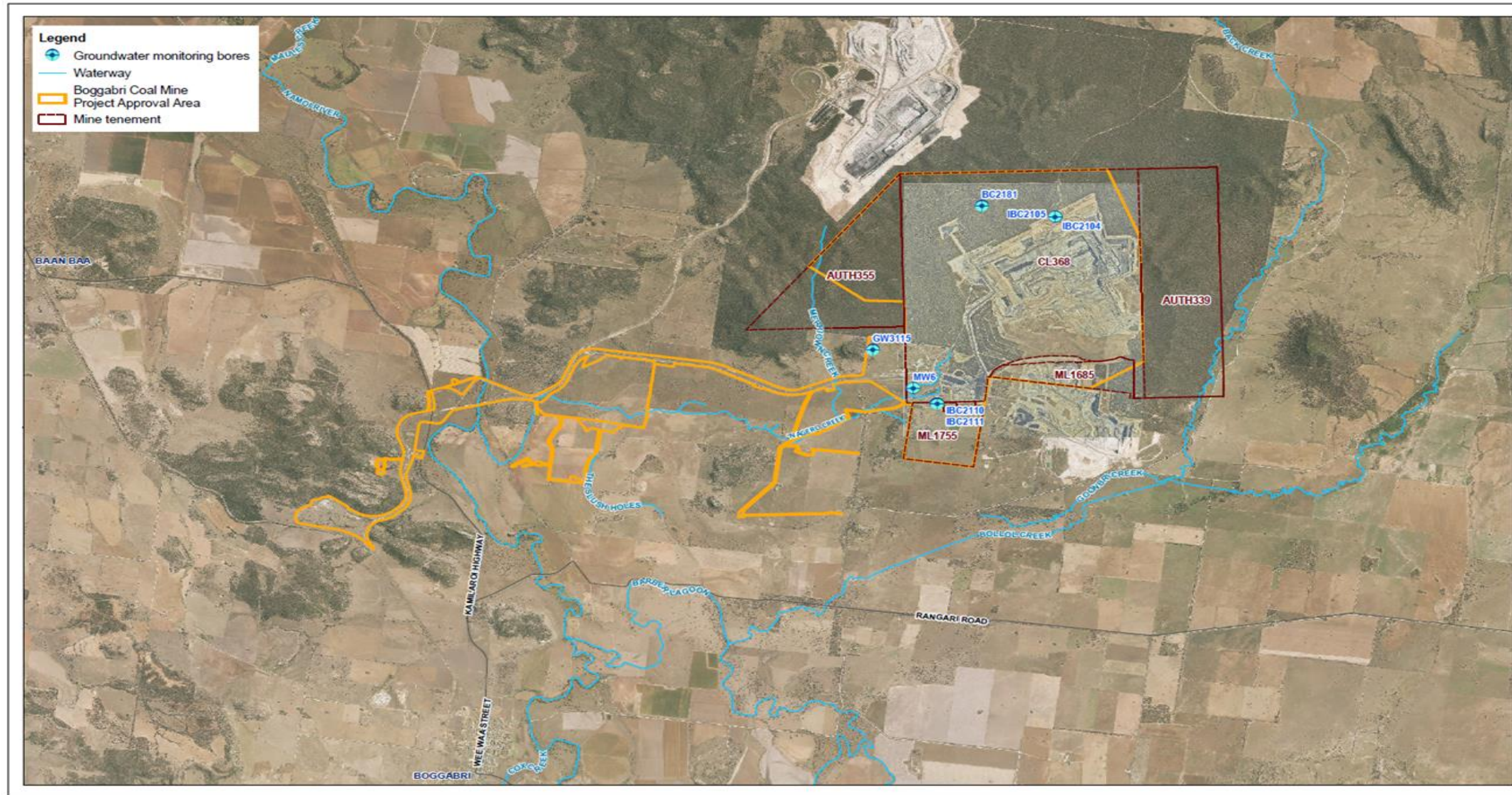


# Air Quality Monitoring



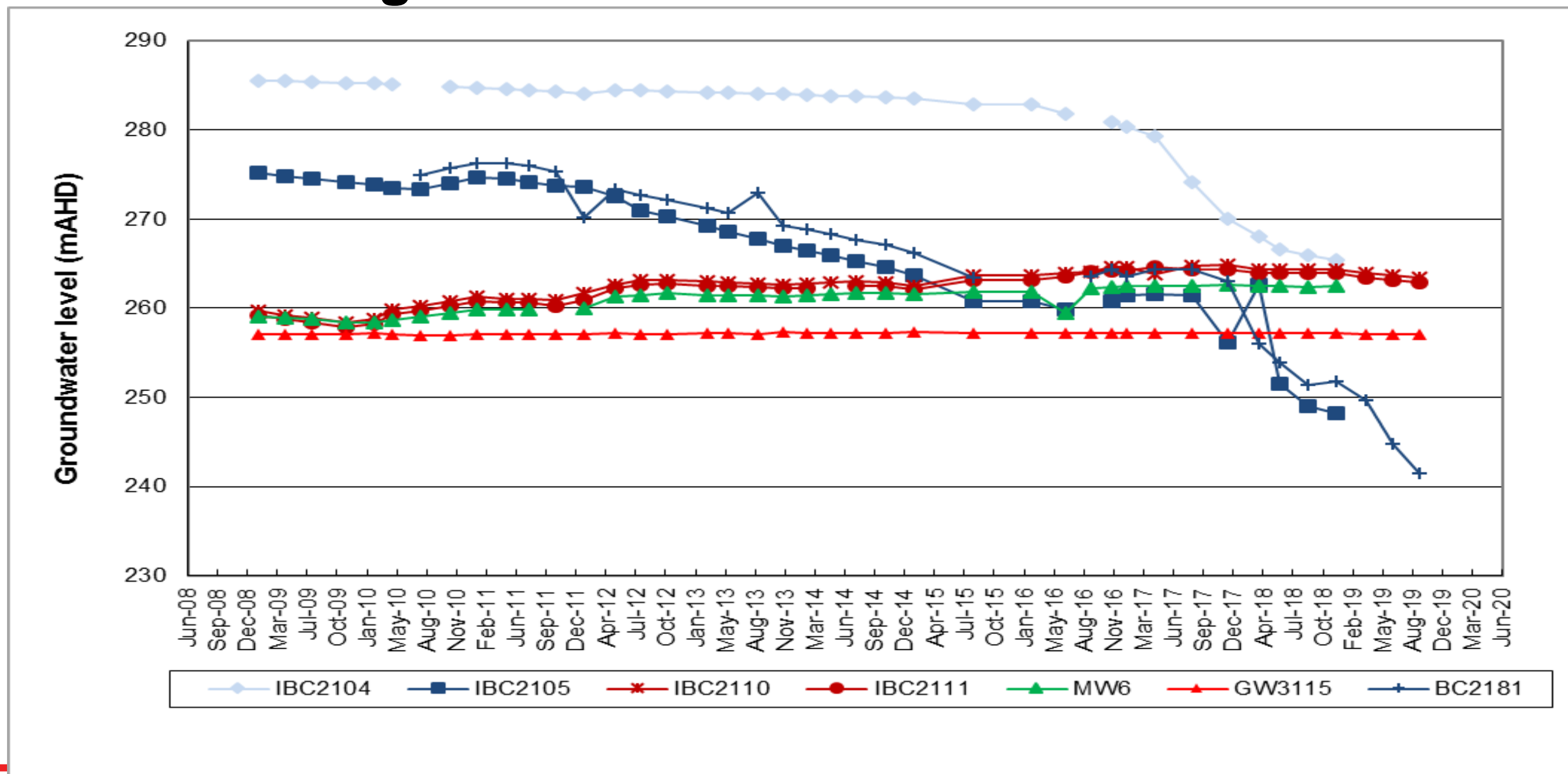
January – September significant contamination from bird droppings

# Groundwater monitoring

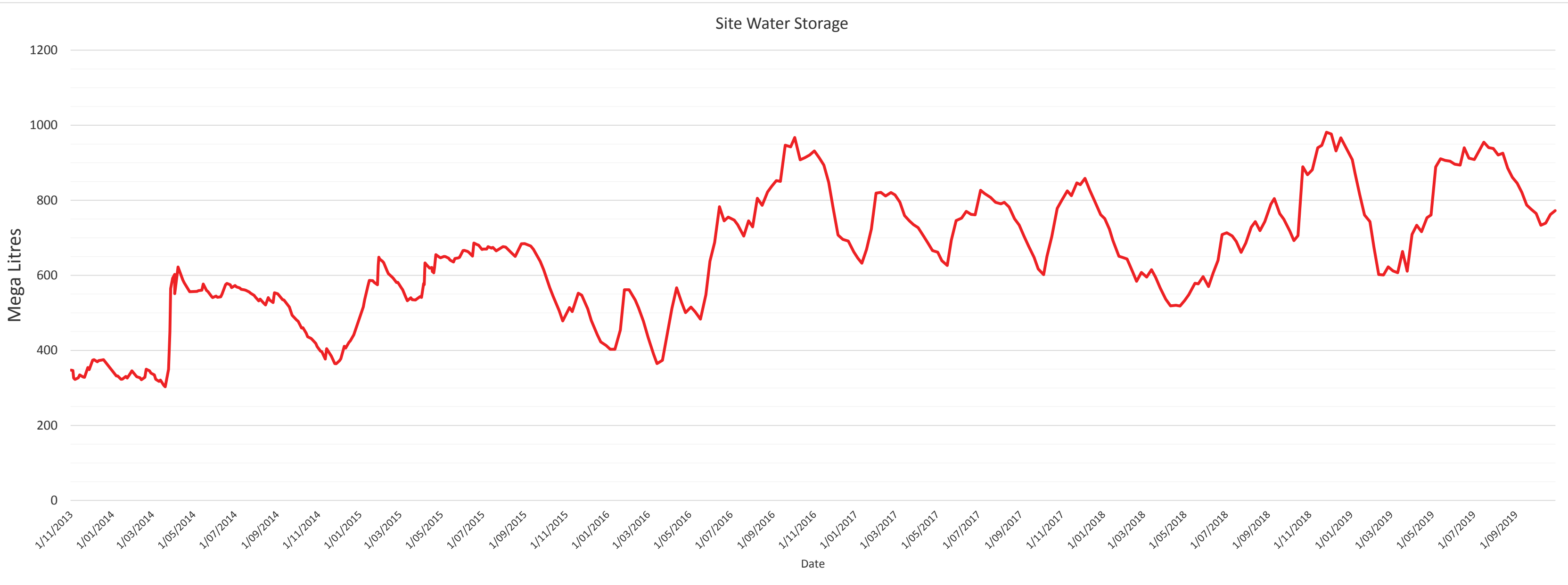




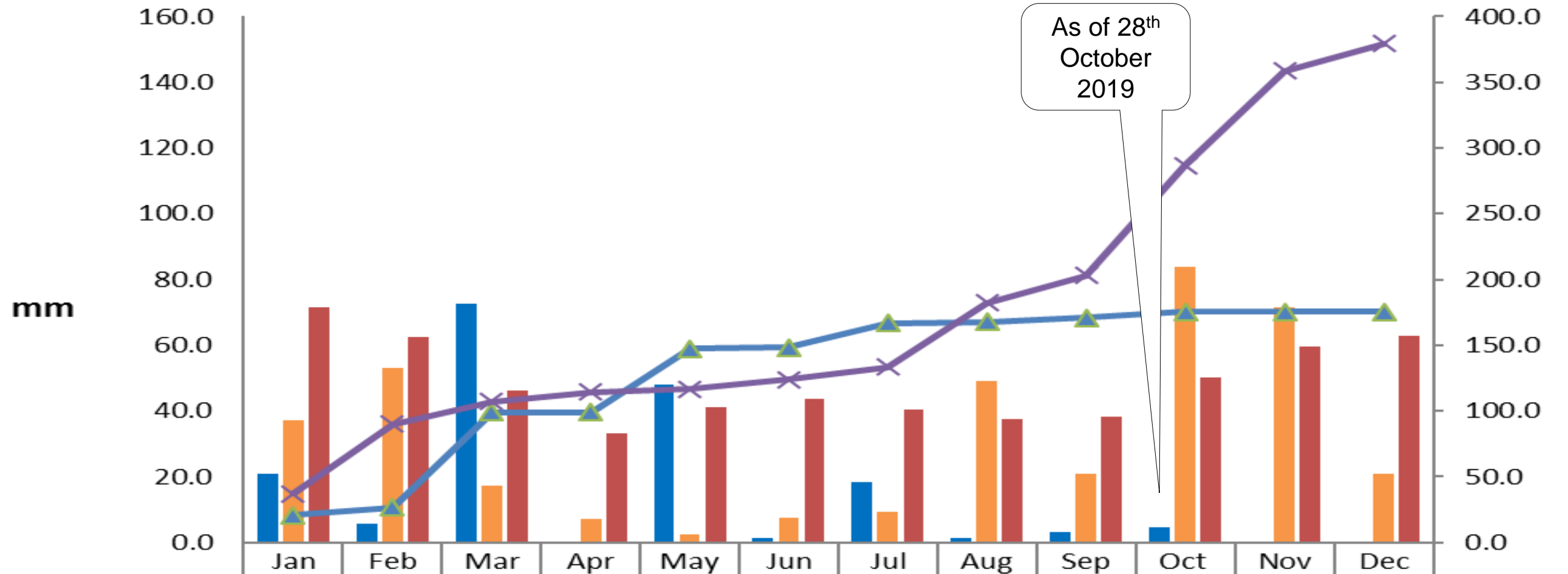
# Groundwater Monitoring



# Water storage on site



# YTD Rainfall 2019



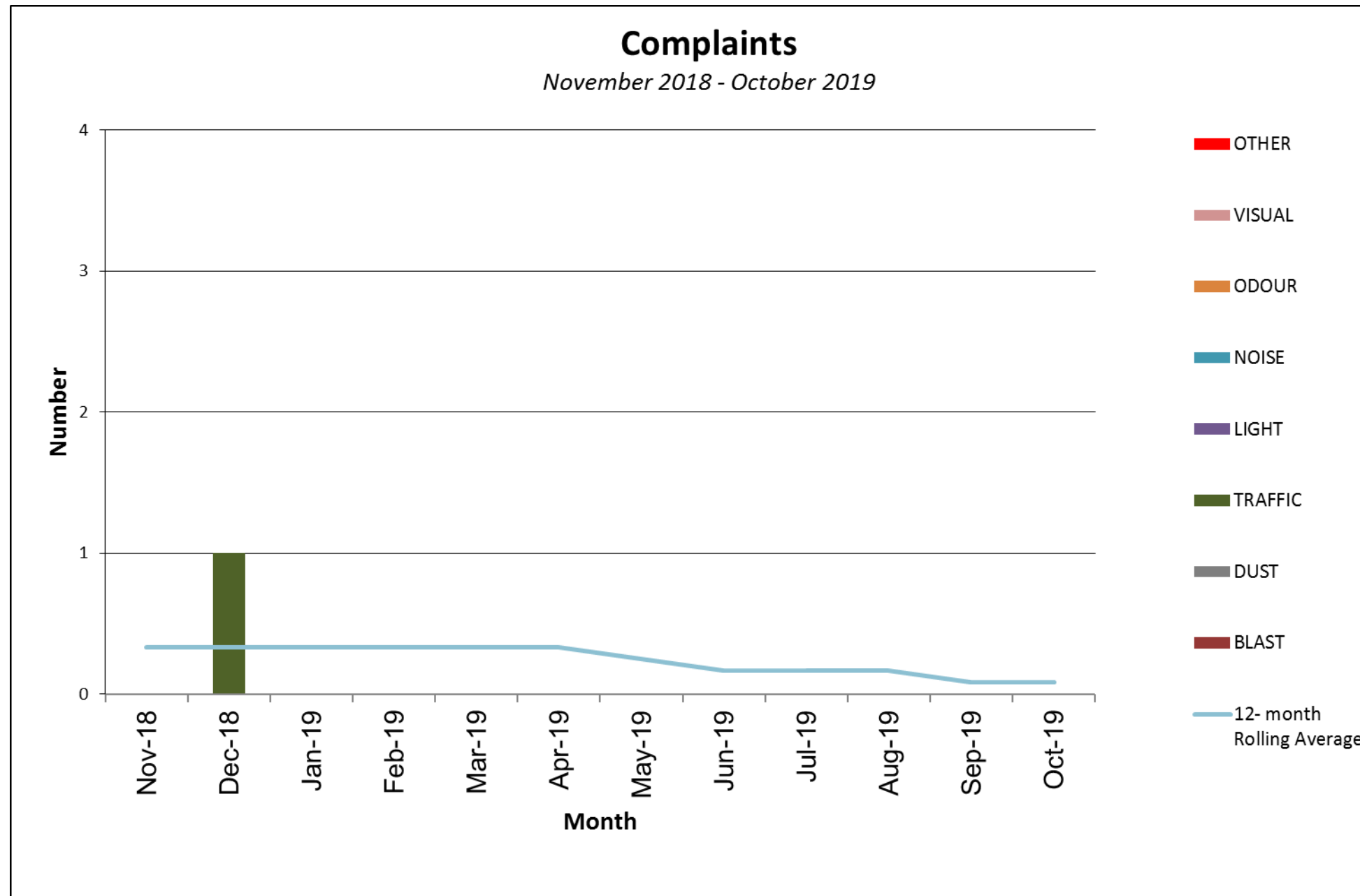
	Jan	Feb	Mar	Apr	May	Jun	Jul	Aug	Sep	Oct	Nov	Dec
■ Month to Date	21.0	5.6	72.6	0.0	48.0	1.2	18.2	1.2	3.0	4.6		
■ Historical Site Data 2018	37.0	53.0	17.2	7.0	2.4	7.4	9.2	49.0	20.8	83.8	71.6	21.0
■ Historical Average (Boggabri Post Office)	71.5	62.6	46.1	33.3	41.3	43.5	40.5	37.7	38.1	50.1	59.6	62.7
—▲— Year to Date Cumulative	21.0	26.6	99.2	99.2	147.2	148.4	166.6	167.8	170.8	175.4	175.4	175.4
—×— Historical Site Data 2018 Cumulative	37.0	90.0	107.2	114.2	116.6	124.0	133.2	182.2	203.0	286.8	358.4	379.4

# Community complaints/feedback

---

Nil complaints

# Community Complaints





End

