

Minutes: Minutes of the meeting of the Boggabri Coal Community Consultative Committee held on Thursday 14 November 2024 at the Boggabri Golf Club commencing at 9.37 am.

Members Present: Alex Williams (AW) – Boggabri Coal, Elizabeth O’Hara (EOH) – Community Representative, Phil Lancaster (PL) – Community Representative, Richard Gillham – Community Representative, Roselyn Druce (RD) – Community Representative, Cr Amanda Brown – Narrabri Shire Council (AB), James Crowe – Boggabri Coal (JC)

Apologies: Mitchum Neave (MN) – Community Representative, Stewart Dunlop (SD) - Boggabri Coal, Susie Pym (SP) – Boggabri Coal.

Observers: Nil

Independent Chair: Michael J. Siver OAM (MJS)

Agenda Item	Discussion	Action/By Whom
1.	Welcome, Introductions and Apologies – MJS welcomed everyone to the meeting, in particular Cr Amanda Brown attending her first meeting as a delegate of Narrabri Shire Council.	
2.	Acknowledgement of Country - The Chair acknowledged the Traditional Owners of the land on which the meeting is being held and their continuing connection to land, water, and culture, paying respects to their Elders past, present and emerging and any Aboriginal person present at the meeting.	
3.	Declaration of pecuniary or other interests – RG’s property falls within the zone of affectation. MJS advised his expenses are borne by the Proponent.	
4.	Minutes of the previous meeting – The minutes of the meeting of 29 August 2024 were approved on 29 September 2024.	
5.	<p>Business Arising</p> <p>7.1 DR to discuss with the EPA the potential for a future presentation at a Joint CCC meeting re- air quality monitoring. MJS indicated he was planning to invite a representative to present at the May 2025 Joint CCC meeting.</p> <p>7.2 MN to approach BCO re local tyre recycling opportunity when timing is appropriate - ongoing.</p> <p>7.3 MJS to obtain advice from EPA regarding status of regional air quality monitoring. MJS tabled the following advice from Lindsay Fulloon, Manager Regional Operations – Armidale, NSW Environment Protection Authority:</p> <p><i>There are six Air Quality Monitoring stations within the Namoi catchment from which data is being made available to the public. Three of these are part of the public network administered by the Department of Energy, Environment, Climate Change and Water (DEECCW) Climate and Atmospheric Science Team. These stations are located at Tamworth, Gunnedah, and Narrabri. They provide data in close to real time which is accessible via the</i></p>	

NSW Air Quality website at: <https://www.airquality.nsw.gov.au/>. The Gunnedah and Narrabri stations began operating in December 2017. The Tamworth station has been in operation since October 2000.

The other three sites are stations operated by the mining industry in accordance with DPHI post development approvals (site Air Quality Management Plans). Initially four industry sites were strategically selected by the EPA based on their location as appropriate for monitoring baseline air quality as the mining industry's operations in the region matured and expanded. These sites are/were located at Maules Creek (a monitoring station operated by Maules Creek Coal Mine), Wil-gai east of Boggabri (operated by Tarrawonga Coal Mine), Werris Creek (Operated by Werris Creek Coal Mine) and Breeza, which was operated by Shenhua Watermark Coal, who have since left the region after the Shenhua Watermark Coal project did not proceed. Unfortunately, this meant that the Breeza monitor ceased operating in April 2021.

The EPA has been publishing data from these stations on its website on a weekly basis since 2016. Data from the Maules Creek, Wil-gai and Werris Creek stations is currently available from 1 June 2017 to the present day. Summary reports of data from these stations between July 2015 and May 2017 are also available.

Data from the industry monitoring stations can be found at: <https://www.epa.nsw.gov.au/your-environment/air/regional-air-quality/namoi-air-quality-monitoring-project>.

The data published on the EPA website is treated in the same way as that from the public DCCEEW network, although it is collected and presented in a slightly different fashion.

The Gunnedah and Narrabri stations within the DCCEEW network have been funded via contributions from the two active mining companies. There is currently a three-year Memorandum of Understanding in place between the two companies, EPA and DCCEEW CAS to continue funding these stations until at least June 2026. There is an intention to discuss the possible expansion of the public network ahead of the expiry of the current MoU by either incorporating the three industry monitors submitting data to the EPA website into the public network and/or relocating or replacing them with public monitors. This will need to be negotiated with the mining companies and DCCEEW and it is expected there will be consultation with the relevant communities and stakeholders in this process. Ultimately, the incorporation of additional monitors will depend on the successful negotiation of funding arrangements beyond the term of the current MoU.

The Wil-gai monitor will become increasingly mine affected and less representative of the conditions that surrounding receptors will be exposed to as the Vickery Mine progresses (due to its proximity to mine operations), and the Werris Creek monitor may become redundant from the perspective of monitoring mining industry impacts once the Werris Creek Coal Mine reaches the end of its life.

7.4 AW to advise how many meters have been installed on water bores.

	<p>AW advised three NRAR approved meters have been installed at Victoria Park, Cooboobindi and Lovton bores.</p> <p>7.5 AW to provide responses to questions on safety protocols associated with 'Black Lung' and whether there is a high silica content in the substrata that could be contained in blast plumes.</p> <p>AW advised that:</p> <ul style="list-style-type: none"> ○ BCO has a personal protective equipment procedure which outlines the requirement for the use of fit for purpose respiratory protection. This respiratory protection is readily available to workers on site and meets the relevant Australian Standards. ○ BCO is compliant with the NSW Order 43 Industry Health Surveillance (including chest X-rays). ○ BCO is compliant with the NSW Order 42 Airbourne Dust Monitoring (including statutory personal dust monitoring) in addition to this BCO engage an occupational hygienist to complete additional personal hygiene monitoring for dust as part of our Similar Exposure Group (SEG) monitoring program. ○ BCO has a Health Control Plan and an Incident & Hazard Management Procedure which outlines the requirement to investigate any exceedances detected through personal hygiene monitoring. <p>And, in respect of a potential high silica content in the substrata at Boggabri Coal and consequently in the 'blast plums' that settle on site and over the surrounding local community AW advised that:</p> <ul style="list-style-type: none"> ○ Since March 2024, BCO have not had any exceedances for respirable coal dust or silica (Quartz) detected through personal hygiene monitoring. <p>AW further advised that random staff monitoring is undertaken quarterly on a random daily basis usually over a week's duration.</p>	
<p>6.</p>	<p>Correspondence</p> <p>Nil</p>	
<p>7.</p>	<p>Proponent's Report</p> <p><i>A copy of the Proponent's Report is attached to the minutes.</i></p> <p>Following provision of the responses to the Actions, AW proceeded with the Proponent's Presentation.</p> <p>Map - Authorisation 339</p> <p>AW explained the aerial photograph detailing the Authorisations and Mining Leases associated with the mine. She advised that Authorisation 339 (A339) will be relinquished during 2025 whilst a section of Authorisation lease 355 will be absorbed into Mining Lease 1883. RG questioned why is Authorisation 339 being relinquished and what becomes of it? AW advised that it is not considered by BCO as an option to mine underground and would become available for another entity. A339 is in place to allow exploration access as necessary to the eastern section of CL368 where surface mining is currently excluded in the coal mining lease conditions, but potential exists for future underground development.</p>	

Correspondence

AW stepped the Committee through the list of correspondence highlighting the more significant matters.

- **Modification 8 (MOD8)**

AW advised there have been no changes since the last CCC meeting. Consultation continues with both the NSW DPHI and Commonwealth DCCEEW to finalise all approvals for MOD8.

- **Native Title**

Native Title agreement fully executed by the State.

- **NSW Department of Planning, Housing and Infrastructure**

MOD10: Secretary of the Environments Assessment Requirements (SEARs) issued for Modification 10 in September 2024. EOH questioned the status of Modification 10 (MOD10) and whether it will go ahead having regard to the depth proposal in MOD8. AW responded that MOD10 can be submitted without regard to the depth proposal in MOD8. *Note: MOD8 provides for the mine to go deeper. The MOD10 proposal provides for water and environmental matters to be addressed.*

Conservation Agreements: Extension for securement of conservation agreements sought due to ongoing land acquisition negotiations – December 2024 deadline cannot be achieved.

- **Resources Regulator**

MLA 586 has been converted into ML 1883

- **Forestry Corp**

Still drafting agreement – finalising exclusive use agreement.

- **Narrabri Shire Council**

Meeting held with Narrabri Shire Council regarding the Mod 10 Social Impact Assessment and Housing Commitment. RD questioned where the focus of the discussion centred – Narrabri or Boggabri. AW responded that the housing commitment for Boggabri is underway, so the discussion now turns to Narrabri. AW advised that BCO is open to ideas regarding how the areas of concern, such as infrastructure and childcare, can be best addressed.

- **NW Natural Resources Access Regulator (NRAR)**

Meters installed at Victoria Park, Cooboodindi and Loveton bores approved. BCO to advise when meters calibrated.

2024 Operational Update

AW provided an operational update, noting the key projects for the balance of 2024.

AW advised that workshop and warehouse project had been delayed, however the solar farm project will start by the end of 2024 and the Glentarkie housing development at Boggabri is underway. She also noted that relocation of the mine water dam is underway.

Development Project update

AW presented a detailed overview of the Development Project (MOD10) over the last six months, noting that the SEARS were issued on 27 September 2024. AW indicated that it is expected that the MOD10 application will be lodged in the first half of 2025. RD enquired as to the status of MOD8. AW advised that the draft conditions of approval have been received.

Housing Voluntary Planning Agreement Update

AW advised that construction has commenced at the Glentarkie project at Boggabri with construction expected to be completed in Q2 2025. She added that there is continuing discussion with Narrabri Shire Council regarding the remaining housing commitments.

Water and Rainfall

The Committee noted the graphs and tables associated with water take volumes and rainfall.

2024 HV tyre disposal

AW advised that on 30 October 2024 42 HV tyres were collected for recycling by Carroll Engineering Services Pty Ltd of South-east Queensland. She added that a further sixteen tyres are set aside for future recycling.

AW advised that Boggabri Coal will be represented at the Tyre Stewardship Australia OTR (Off The Road) Mining Tyre and Conveyor Belt Forum in Sydney next week.

Exploration

The Committee noted the exploration program across 2024.

Grinding Groove Relocation

AW advised that following consultation with BCO RAPs, a Sandstone Grinding Groove (found in 2009) was relocated from a creek line to Velyama. RD expressed concern regarding the new location, as the Grinding Groove is sandstone, and it may require moisture to maintain its integrity and avoid cracking. AW noted the comments but indicated that there had been extensive discussion with the RAPs regarding the new location.

Community Complaints

The Committee noted there were no complaints during the period.

Sponsorship

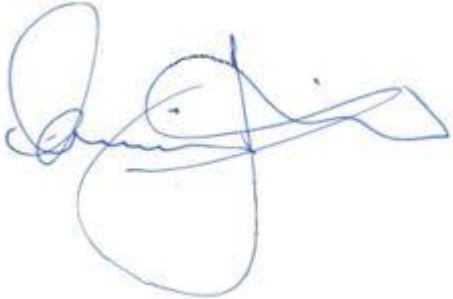
The Committee noted the sponsorship allocations across the region.

*Chair's note: Minute
amended 13
February 2025.*

	<p>Current Vacancies AW explained the table detailing position vacancies.</p> <p>EOH enquired as to what roles are significant to the operation. AW responded that all roles are significant but the demand for maintenance trades is the most challenging. There has been a consistent shortage in these discipline with difficulty filling these positions. AW indicated that flexibility in rosters was being examined. Currently a 5-on/4-off roster applies however a 7-on/7-off arrangement is being assessed. RG asked whether work attendance was a problem. AW indicated that absenteeism is a problem from time to time. Staff availability has been further challenged by the recent administration of a labour hire company.</p> <p>AW also highlight recent hierarchical changes to the operation of haul and secondary roadways within the pit. She advised that a presentation on these changes will be made at the next meeting.</p>	<p>ACTION: AW to provide information on roadway hierarchical changes.</p>
<p>8.</p>	<p>Other Agenda Items Nil</p>	
<p>9.</p>	<p>General Business</p> <p>9.1 Risk Level Rating RD sought clarification as to the mines risk level rating, regarding Environmental Protection Licence (EPL) 12407. AW advised she would confirm at the next meeting. Chair's note: Based on the results from the risk assessments, licensees are allocated an overall environmental risk level (1, 2 or 3 - with 3 being the highest risk). Licensees with a higher risk level will receive an increased level of regulatory and compliance oversight, whereas licensees with a lower risk level will benefit from reduced red tape and reduced regulatory burden.</p> <p>9.2 Euthanised and Killed Fauna RD requested numbers of fauna (species and genus) euthanised, killed or relocated as part the vegetation clearing process each year, on an ongoing basis. AW advised she would provide the figures at the May 2025 meeting. AW proceeded to explain the clearing program up to 2029. RG expressed concern at the impact of clearing near the river and the potential impact on its course. Chair's note: Clarification as to the scope and timing of figures to be provided will be confirmed at the February 2025 meeting.</p> <p>9.3 Employee Travel on local roadways RG expressed concern at the increased level of employee travel on gravel roads east of Boggabri and particularly on roads that are used as school bus routes. He noted that the gravel roads where not designed or maintained for the volume of traffic and question what could be done. AW advised that work travel routes are outlined in the employee induction packs and should be adhered to. AB noted the concerns regarding the road conditions and indicated she would take the matter up with the relevant Narrabri Shire Council officers.</p>	<p>ACTION: AW to advise the risk level on EPL 12407 at the February 2025 meeting</p> <p>ACTION: AW to provide details of fauna euthanised, killed or relocated during vegetation clearing at the May 2025 and ongoing at future meetings</p>

	<p>PL questioned whether bus travel for employees is an option? AW advised that bus travel was considered, but there were not sufficient users to warrant provision of buses. AB noted that Maules Creek Coal do have a bus pick up service. PL indicated that the securing of workers gear and equipment on buses was a significant safety consideration.</p> <p>Meeting closed 10.49 am</p>	
10.	<p>Next meeting The next meeting is scheduled for 13 February 2025</p>	

Approved:



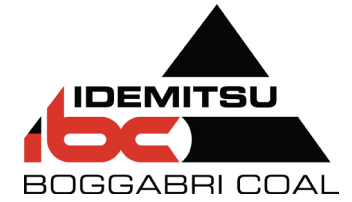
Michael J. Silver OAM
Independent Chair

17 December 2024

Appendix 1: Actions

Action No	Description	Date Raised	Page	Status
1	BCO to develop slide of cross-section of proposal extension	15.02.24	2	COMPLETED 16.05.24
2	BCO to email to members page numbers of Plan relevant to bushfire management. <i>Bushfire Management Plan is pages 11-12 of the Biodiversity Management Plan.</i>	15.02.24	2	COMPLETED 15.02.24
3	BCO to follow up details of A355 lease.	15.02.24	3	COMPLETED 16.05.24
4	DR to discuss with the EPA the potential for a future presentation at a Joint CCC meeting re- air quality monitoring.	15.02.24	4	ONGOING Proposed for BTM CCC 14 May 2025
5	MN to approach BCO re local tyre recycling opportunity when timing is appropriate.	15.02.24	5	ONGOING
6	SD will report back to MN the process for amending the RAP list.	15.02.24	5	COMPLETED 16.02.24
7	BCO to provide email address used for sponsorship applications to members.	15.02.24	5	COMPLETED 16.02.24
8	BCO to bring some A3 sized hard copies of presentation to next meeting.	15.02.24	6	COMPLETED 16.02.24
9	MN to arrange a meeting with BCO and the CEO of Red Chief.	15.02.24	7	COMPLETED BCO have met with Red Chief CEO
10	MJS to advise Ms Druce that the proposition should be discussed with NSC and RFS.	16.02.24	2	COMPLETED 06.06.2024
11	SD to provide a vehicle fleet list to the CCC.	16.05.24	4	COMPLETED 29.08.2024
12	AW to provide list of animals dead or euthanised during tree clearing.	16.05.24	6	COMPLETED 29.08.2024
13	MJS to obtain advice from EPA regarding status of regional air quality monitoring.	29.08.24	4	COMPLETED 14.11.24
14	AW to advise how many meters have been installed on water bores.	29.08.24	4	COMPLETED 14.11.24
15	AW to provide responses to questions on safety protocols associated with 'Black Lung'	29.08.24	5	COMPLETED

	and whether there is a high silica content in the substrata that could be contained in blast plumes.			14.11.24
16	AW to provide information on roadway hierarchical changes.	14.11.24	6	
17	AW to advise the risk level on EPL 12407 at the February 2025 meeting.	14.11.24	6	
18	AW to provided details of fauna euthanised, killed or relocated during vegetation clearing at the May 2025 meeting and ongoing at future meetings.	14.11.24	6	



CCC Meeting November 2024

Boggabri Coal



14 November 2024



Agenda

- Apologies
- Declaration of pecuniary interests
- Business arising from previous minutes
- Correspondence
- Company Reports & Overview
- General business & Consultation
- Next meeting

Business arising from previous minutes

Action	Action to be done	Status	Comments
1	DR to discuss with the EPA the potential for a future presentation at a Joint CCC meeting re- air quality monitoring.		Ongoing
2	MN to approach BCO re local tyre recycling opportunity when timing is appropriate.		Ongoing
3	MJS to obtain advice from EPA regarding status of regional air quality monitoring.		Ongoing
4	AW to advise how many meters have been installed on water bores.		Slide 4
5	AW to provide responses to questions on safety protocols associated with 'Black Lung' and whether there is a high silica content in the substrata that could be contained in blast plumes.		Slide 5

Bore Meters

NRAR approved meters have been installed at Victoria Park, Coobooindi and Lovton bores.



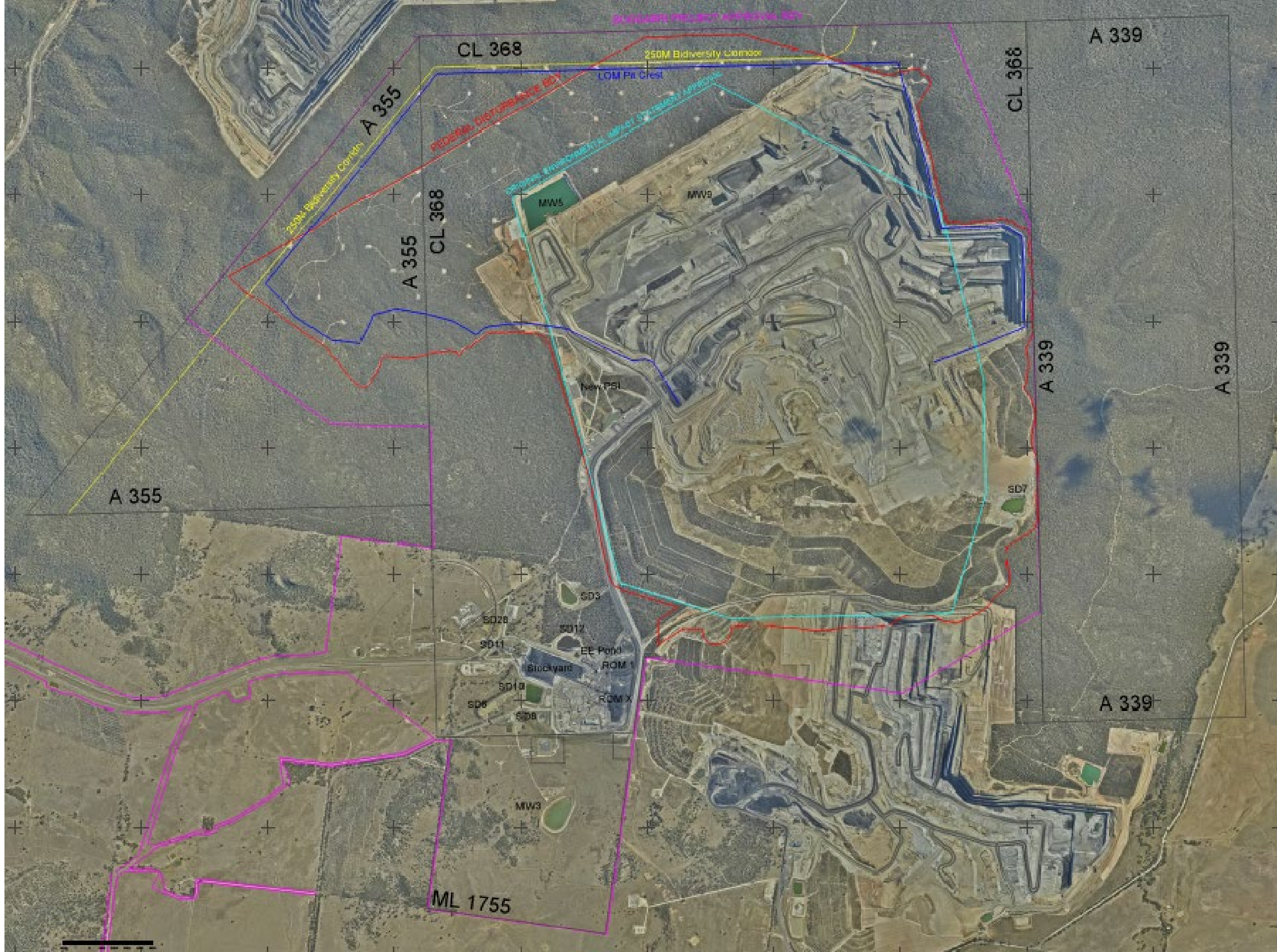
Black Lung

8.1.1 Has Boggabri Coal reviewed its OH&S protocol or implemented substantial PPE changes to ensure that employees are protected from the possibility of contracting Black Lung, or implemented early detection for cases while working onsite?

- BCO has a personal protective equipment procedure which outlines the requirement for the use of fit for purpose respiratory protection. This respiratory protection is readily available to workers on site and meets the relevant Australian Standards.
- BCO is compliant with the NSW Order 43 Industry Health Surveillance (including chest X-rays).
- BCO is compliant with the NSW Order 42 Airbourne Dust Monitoring (including statutory personal dust monitoring) in addition to this BCO engage an occupational hygienist to complete additional personal hygiene monitoring for dust as part of our Similar Exposure Group (SEG) monitoring program.
- BCO has a Health Control Plan and an Incident & Hazard Management Procedure which outlines the requirement to investigate any exceedances detected through personal hygiene monitoring.

8.1.2 Is there a high silica content in the substrata at Boggabri Coal, hence in the 'blast plums' that settle on site and over the surrounding local community?

- Since March 2024, we have not had any exceedances for respirable coal dust or silica (Quartz) detected through personal hygiene monitoring.



Correspondence



Correspondence

MOD 8

No change since August 2024 CCC

- All NSW State approved documentation can be found on Planning Portal ([MOD 8 - Increase in depth of mining | Department of Planning Housing and Infrastructure \(nsw.gov.au\)](#))
- Next stage is finalisation of Commonwealth EPBC assessment and decision – expected Q4 2024 however dependent on close out of the EPBC Reconsideration process (separate process).
- Consultation continues with both the NSW DPHI and Commonwealth DCCEEW to finalise all approvals for MOD8.
- Draft Federal conditions consulted with Commonwealth DCCEEW.

Native Title

- Native Title agreement fully executed by the State.
- Commencement notice issued to NTS Corp from BCO
- BCO awaiting response re. commencement process and liaison committee from NTS Corp.

Correspondence

NSW Department of Planning, Housing and Infrastructure

- Groundwater Management Plan extension approved pending receipt of Federal Mod 8 conditions .
- Surface Water Management Plan approved.
- Secretary of the Environments Assessment Requirements (SEARs) issued for Modification 10 in September 2024
- Letter of extension for securement of conservation agreements sent
- Rehabilitation Strategy approved late October

Environment Protection Authority

- Submitted monthly attended noise monitoring reports.
- Final licence variation for Environmental Protection Licence (EPL) 12407 received October 2024.

Biodiversity Conservation Trust

- Regular progress meetings are being held regarding Conservation Agreements.
- Biodiversity Conservation Trust site visit September 2024.
- Conservation Agreements – Group 3 currently under revision for signature.
- Group 5 being finalised with BCT.

National Parks

- Awaiting draft deed agreement and final site visit for handover of Mallee, Merriendi and Myall Plains

Correspondence

Resources Regulator

- MLA 586 has been converted into ML 1883
- Conducted a targeted assessment program to review our revegetation process – awaiting close out report.

Forestry Corporation of NSW

- Forestry drafting compensation agreement for A355.
- Finalising Forest Permit and Exclusive Use Agreement.

Department of Climate Change, Energy, Environment and Water

- Draft Mod 8 conditions.
- Letter of extension for securement of conservation agreements sent

Narrabri Shire Council

- Meeting held with NSC for Mod 10 Social Impact Assessment and Housing Commitment.

NSW Natural Resources Access Regulator (NRAR)

- Q3 report submitted as per EU requirement.
- NRAR approved meters have been installed at Victoria Park, Coobooindi and Loveton bores.

2024 Operations Update

Production Targets

Metric	2024 Budget
Total Waste (Kbcm)	60,200,000
Coal Mined (tonnes)	8.5m
Coal railed (tonnes)	7.1m
Metric	2024 Q3 Result
Total Waste (Kbcm)	43,500,000
Coal Mined (tonnes)	6.2 million
Coal railed (tonnes)	5.4 million

Key Projects for balance of 2024

- Finalise edge of pit maintenance and fuel facility
- Expansion of workshop and warehouse.
- Development Project impact assessments
- Solar Farm construction.
- Glentarkie construction.
- Relocation of main mine water dam.

Development Project update

23/05: Scoping Request and DPHI response live on Planning Portal [[Mod 10 - Increase to mine footprint and mine life | Planning Portal - Department of Planning and Environment \(nsw.gov.au\)](#)]

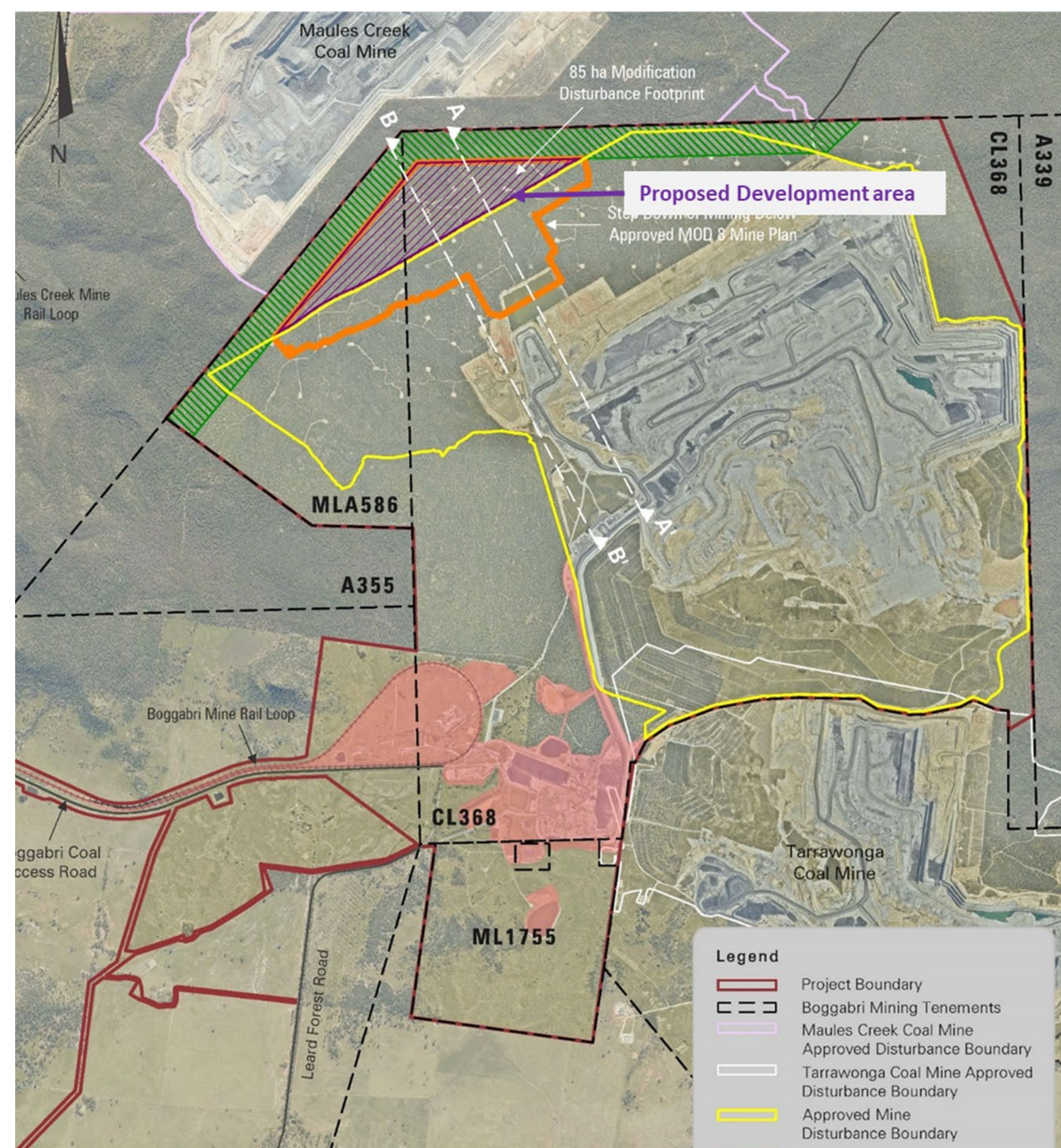
30/05: Lodgement of Commonwealth EPBC Referral (EPBC2024/9887). Public comment period was open until 06/08/24.

20/08: Project is a controlled action for Listed threatened species and communities and a water resource.

27/09: Secretary's Environmental Assessment Requirements (SEARs) received from DPHI.

Environmental assessments to support the Modification application are continuing.

Regulatory agency engagement has progressed in relation to project briefing and discussion of assessment approach.



Housing Voluntary Planning Agreement Update

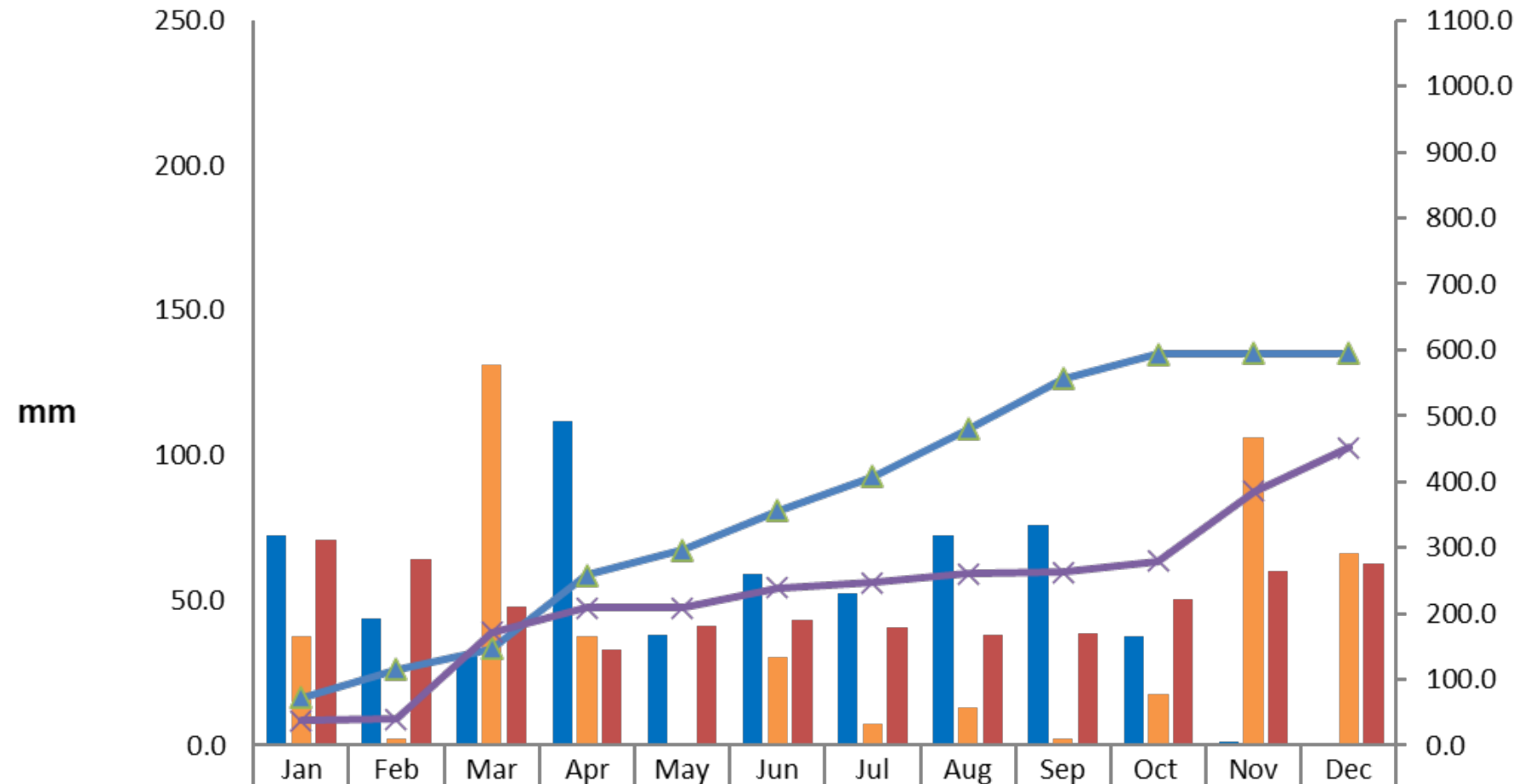
- Construction has commenced at Glentarkie, expected completion Q2 2025.
- Further dialogue with Narrabri Shire Council re remaining housing commitments.



Q3 July-Sept 2024 Water Take Volumes

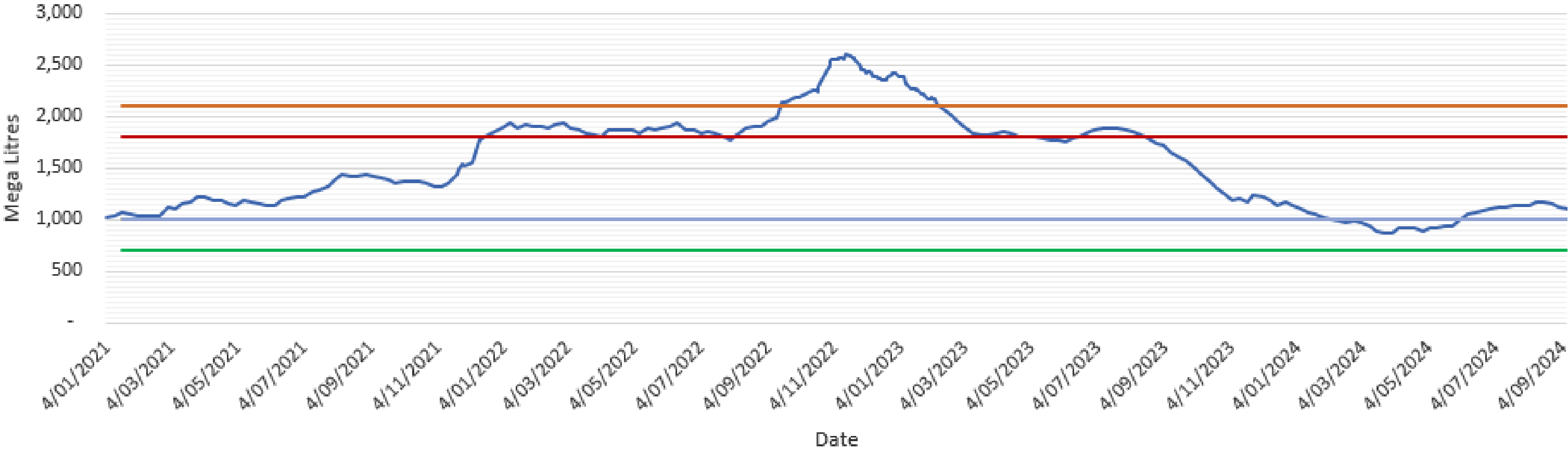
Surface Water Source	Licence held (ML)	July-Sept 2024 (ML)
Unregulated - Bluevale Water Source	400	47.6
Lower and Upper Namoi Regulated River Water	322	0
Groundwater	Licence held (ML)	24 (ML)
Upper Namoi Zone 4 Namoi Valley (Keepit Dam to Gin's Leap)	1028	13.4
Upper Namoi Zone 11 Maules Creek Groundwater Source	20	0.25
Gunnedah Oxley Basin Murray Darling Basin Groundwater Source	842	39.5

YTD Rainfall 2024

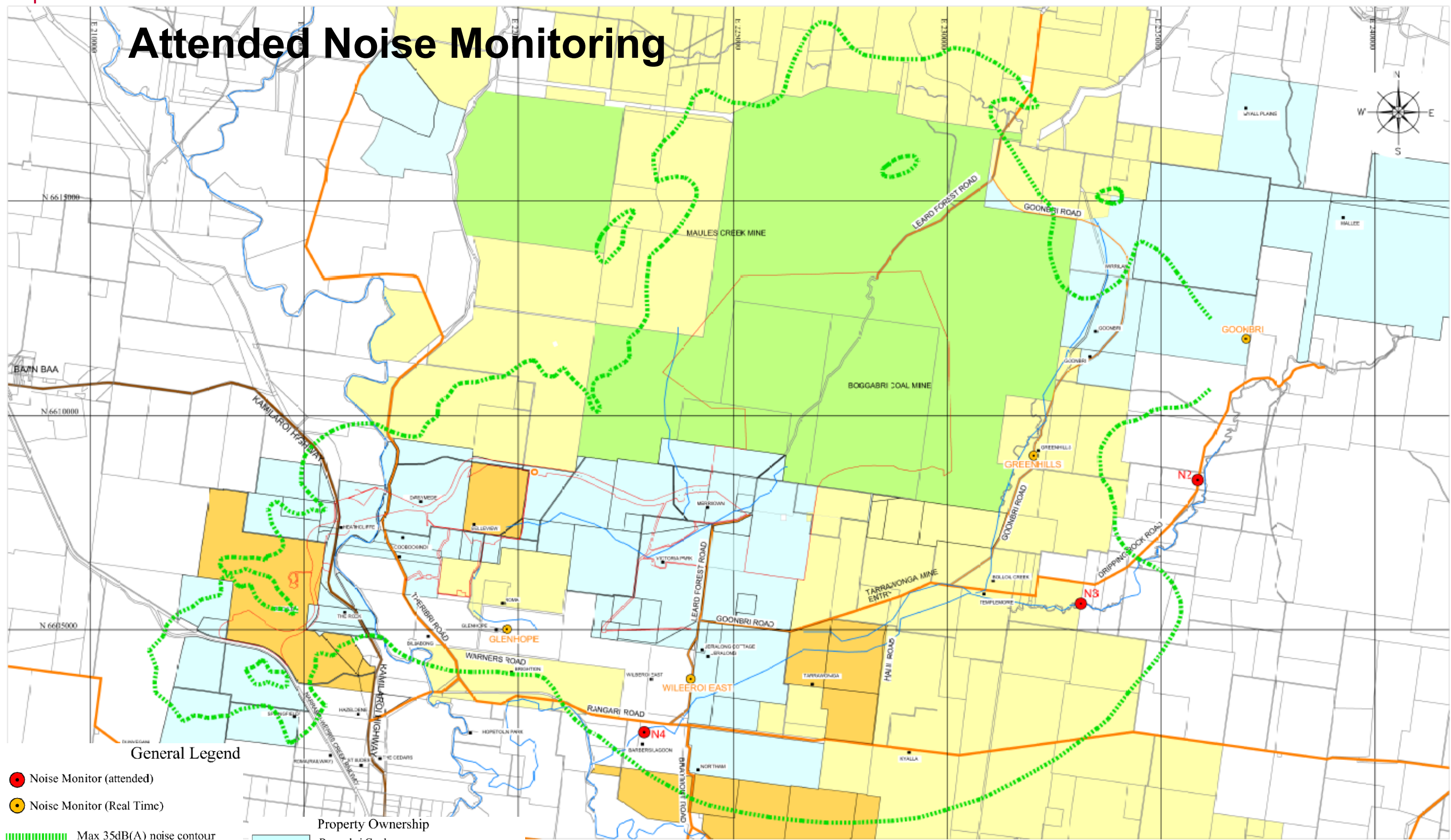


	Jan	Feb	Mar	Apr	May	Jun	Jul	Aug	Sep	Oct	Nov	Dec
Month to Date	72.2	43.6	31.0	111.6	38.2	59.2	52.4	72.2	75.8	37.6	1.2	0.0
Historical Site Data 2023	37.8	2.4	131.0	37.4	0.2	30.6	7.4	13.2	2.2	17.6	106.0	66.4
Historical Average (Boggabri Post Office)	71.0	64.2	47.6	33.2	41.3	43.3	40.5	38.1	38.5	50.3	60.1	62.9
Year to Date Cumulative	72.2	115.8	146.8	258.4	296.6	355.8	408.2	480.4	556.2	593.8	595.0	595.0
Historical Site Data 2023 Cumulative	37.8	40.2	171.2	208.6	208.8	239.4	246.8	260.0	262.2	279.8	385.8	452.2

Site Water Storage



Attended Noise Monitoring



● Noise Monitor (attended)

● Noise Monitor (Real Time)

▬ Max 35dB(A) noise contour

■ Residence / Property name

▬ Creek / River

▬ Roads

▬ Kamilaroi Highway

Property Ownership

▬ Boggabri Coal

▬ Boggabri Coal & Whitehaven Coal Mining

▬ Whitehaven Coal

▬ State Forest

▬ Boggabri Coal Project Approval Boundary

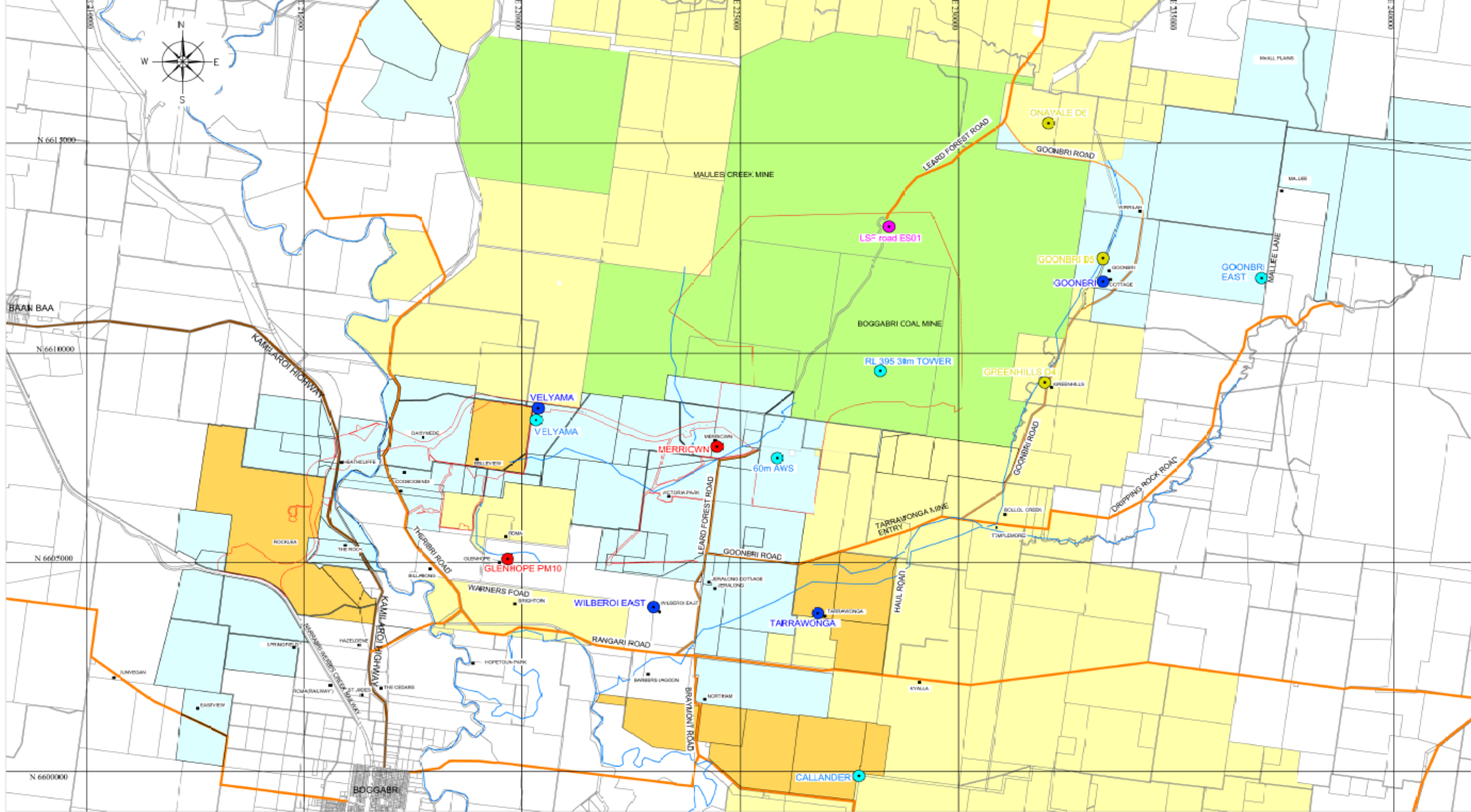
General Legend

Attended Noise Monitoring April

Attended Noise monitoring location	LAeq, 15min Impact Assessment Criterion	Jan-24	Feb-24	March-24	April-24	May-24	June-24	July-24	Aug- 2024	Sept- 2024
Sylvania	35	IA	IA	IA	IA	IA	IA	IA	<20	<20
Picton	35	IA	<25	IA	IA	IA	IA	IA	IA	<20
Barbers Lagoon	35	IA	26	IA	IA	IA	IA	IA	IA	IA

IA: No site noise was audible at the monitoring location

NM: Noise audible but could not be quantified.



REV	REVISIONS	DATE

General Legend	
	Meteorological Station
	TEOM
	E-Sampler
	Dust Monitoring
	High Volume Air Sampler
	Resider.ce / Property name
	Creek / River
	Roads
	Kamilaroi Highway

QUALITY RECORD			
REVIEW	NAME	SIGNATURE	DATE
DRAWN	NIC GARDNER		23/21
DWG CHECKED by			

Property Ownership	
	Boggabri Coal
	Boggabri Coal & Whitehaven Coal Mining
	Whitehaven Coal
	State Forest
	Boggabri Coal Project Approval Boundary

SCALE
See Grid (5000m)

FILE RFP:
Air Quality Monitoring locations 23021.dwg

PLOT FILE:
Air Quality Monitoring locations 23021.pdf

ORIG. FILE SIZE:
A3

Boggabri Coal Operations

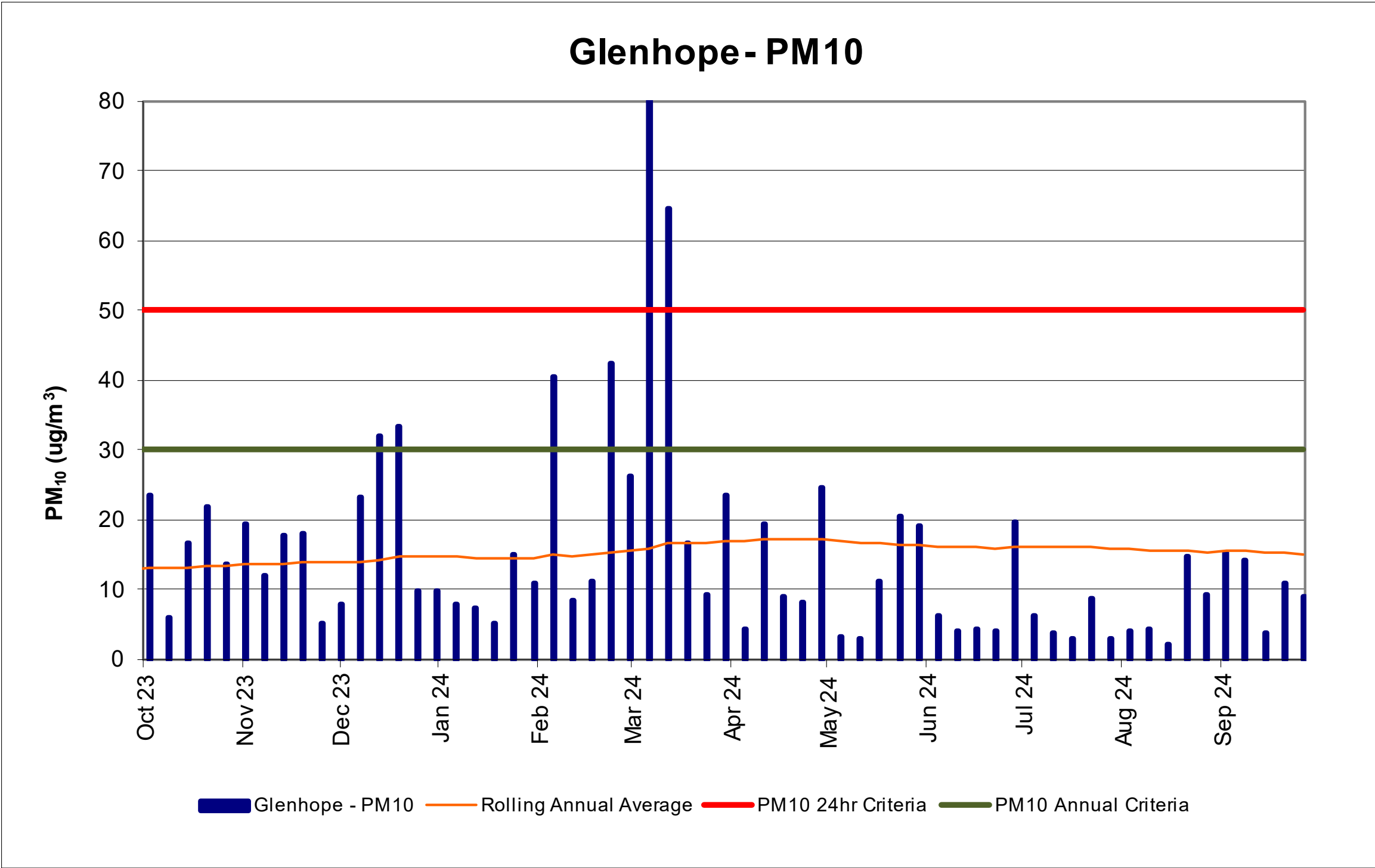
Air Quality Monitoring Locations

DRAWING NO:
23021b

REV				



Air Quality Monitoring HVAS



Air Quality Monitoring

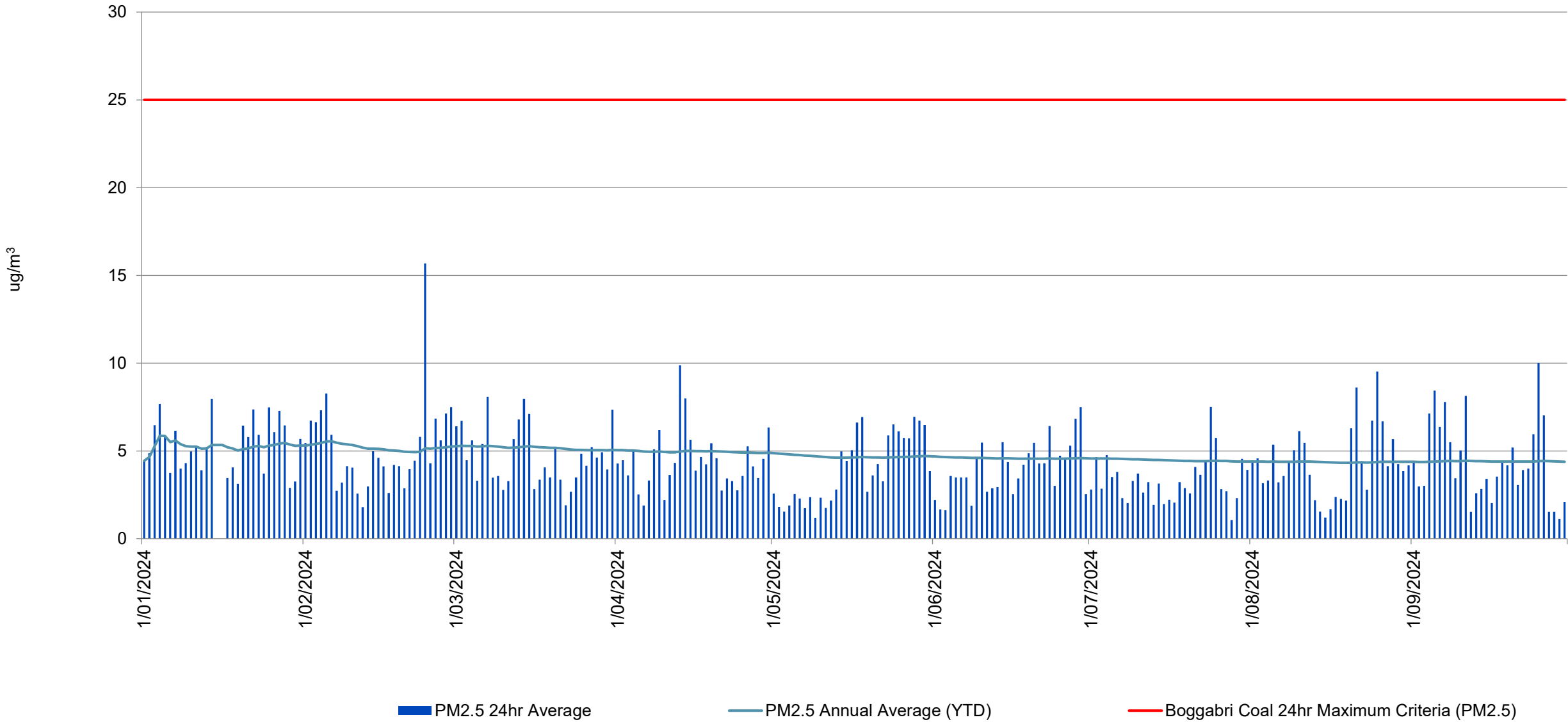
TEOM PM10

Wilberoi East TEOM - PM10			
Date	24hr Average	PM10 Annual Average (YTD)	PM10 Rolling Annual Average
1/08/2024	8.8	10.6	14.4
2/08/2024	8.3	10.6	14.4
3/08/2024	7.0	10.6	14.4
4/08/2024	8.0	10.6	14.4
5/08/2024	7.9	10.6	14.4
6/08/2024	5.0	10.6	14.3
7/08/2024	5.7	10.5	14.3
8/08/2024	7.2	10.5	14.3
9/08/2024	9.6	10.5	14.3
10/08/2024	9.6	10.5	14.3
11/08/2024	8.2	10.5	14.2
12/08/2024	5.8	10.5	14.2
13/08/2024	4.0	10.5	14.1
14/08/2024	3.2	10.4	14.1
15/08/2024	3.3	10.4	14.1
16/08/2024	3.1	10.4	14.0
17/08/2024	4.8	10.3	14.0
18/08/2024	4.9	10.3	14.0
19/08/2024	6.8	10.3	14.0
20/08/2024	11.7	10.3	14.0
21/08/2024	15.2	10.3	14.0
22/08/2024	10.2	10.3	14.0
23/08/2024	12.3	10.3	14.0
24/08/2024	21.2	10.4	14.0
25/08/2024	15.1	10.4	14.0
26/08/2024	13.6	10.4	14.0
27/08/2024	13.2	10.4	13.9
28/08/2024	14.9	10.4	13.9
29/08/2024	15.8	10.5	14.0
30/08/2024	19.4	10.5	14.0
31/08/2024	12.1	10.5	14.0

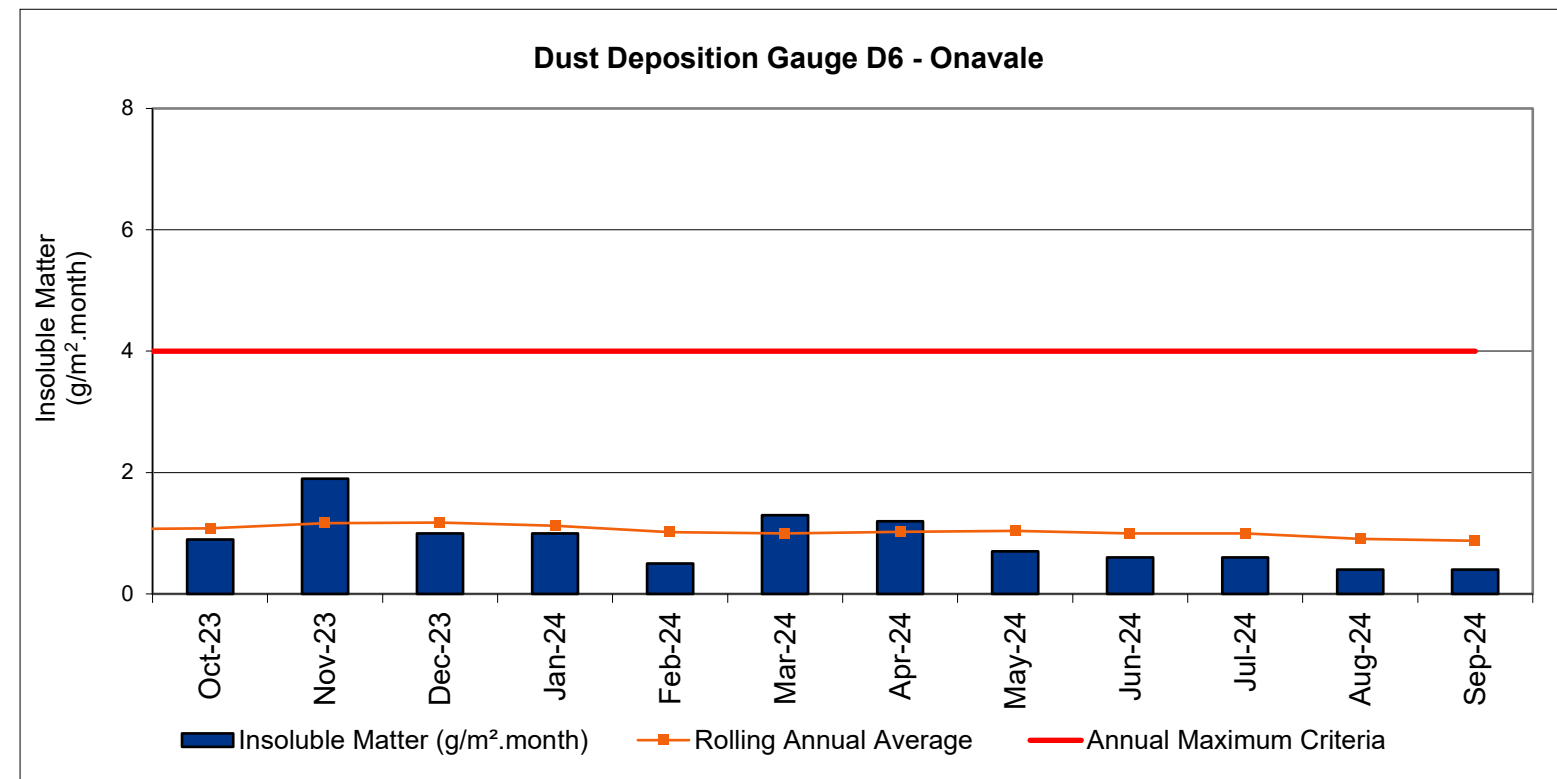
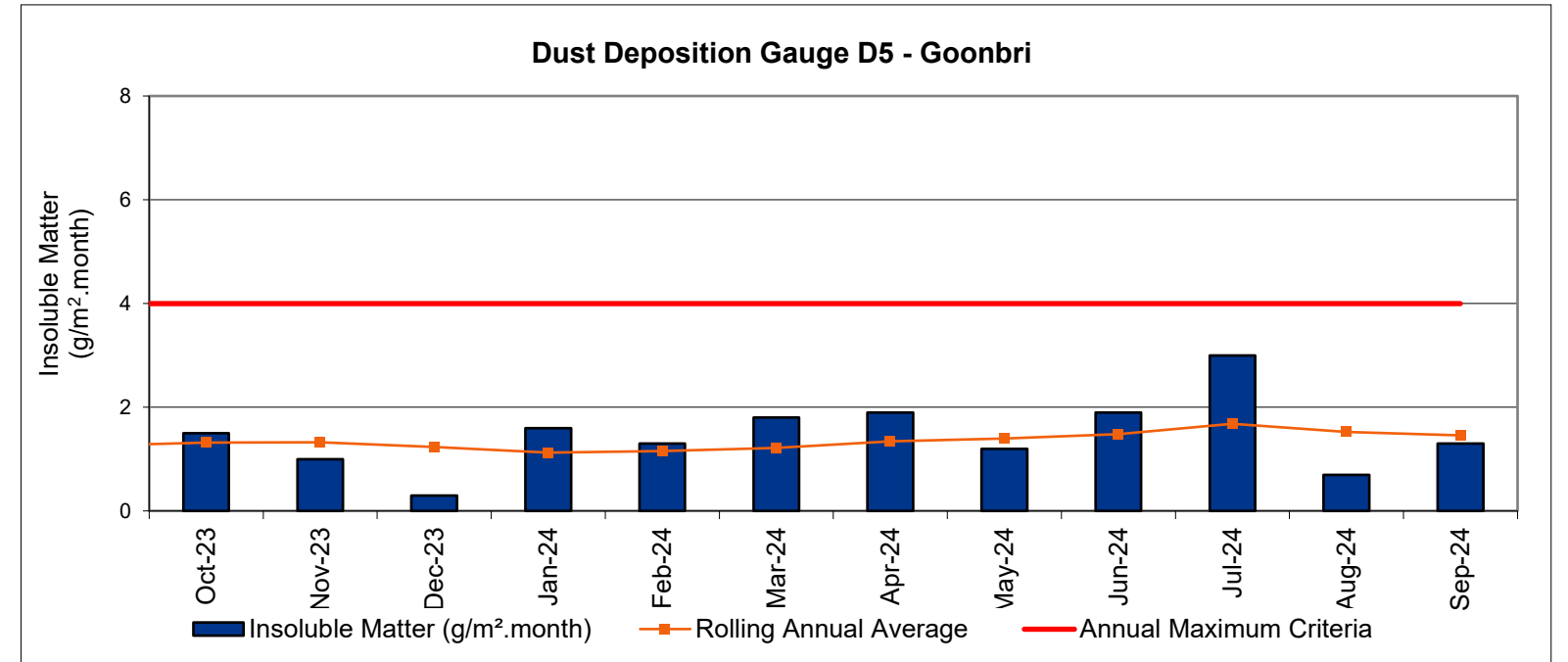
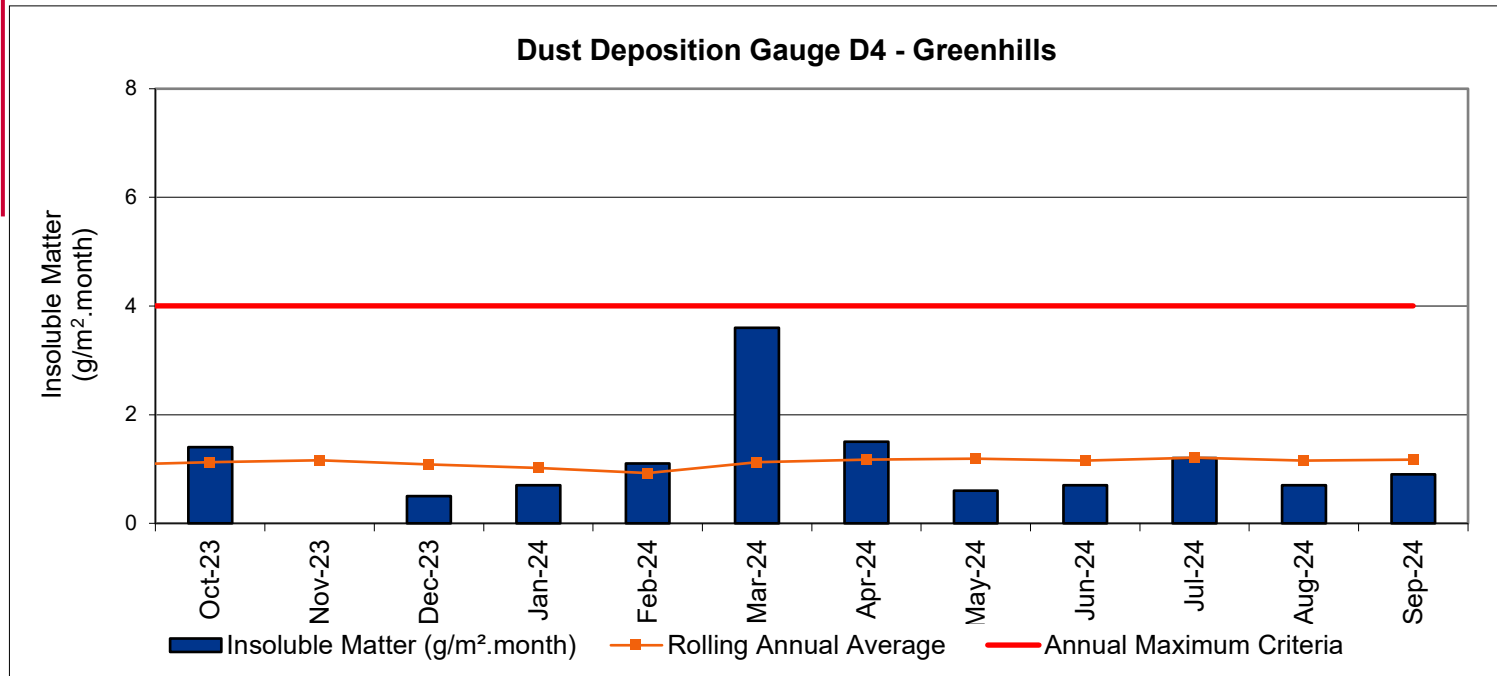
Wilberoi East TEOM - PM10			
Date	24hr Average	PM10 Annual Average (YTD)	PM10 Rolling Annual Average
1/09/2024	18.1	10.5	14.0
2/09/2024	17.0	10.6	14.0
3/09/2024	11.2	10.6	14.0
4/09/2024	21.0	10.6	14.0
5/09/2024	24.8	10.7	14.1
6/09/2024	19.5	10.7	14.1
7/09/2024	23.9	10.8	14.1
8/09/2024	16.5	10.8	14.1
9/09/2024	10.4	10.8	14.1
10/09/2024	20.2	10.8	14.2
11/09/2024	21.0	10.9	14.2
12/09/2024	3.8	10.8	14.2
13/09/2024	6.1	10.8	14.1
14/09/2024	6.2	10.8	14.1
15/09/2024	8.0	10.8	14.0
16/09/2024	6.4	10.8	13.9
17/09/2024	12.3	10.8	13.8
18/09/2024	15.5	10.8	13.8
19/09/2024	13.8	10.8	13.7
20/09/2024	19.9	10.8	13.7
21/09/2024	13.4	10.8	13.7
22/09/2024	15.7	10.9	13.7
23/09/2024	17.4	10.9	13.7
24/09/2024	24.1	10.9	13.8
25/09/2024	23.7	11.0	13.7
26/09/2024	11.9	11.0	13.7
27/09/2024	4.2	11.0	13.6
28/09/2024	3.8	10.9	13.6
29/09/2024	4.0	10.9	13.6
30/09/2024	6.7	10.9	13.5

Air Quality TEOM PM2.5 Wilberoi East

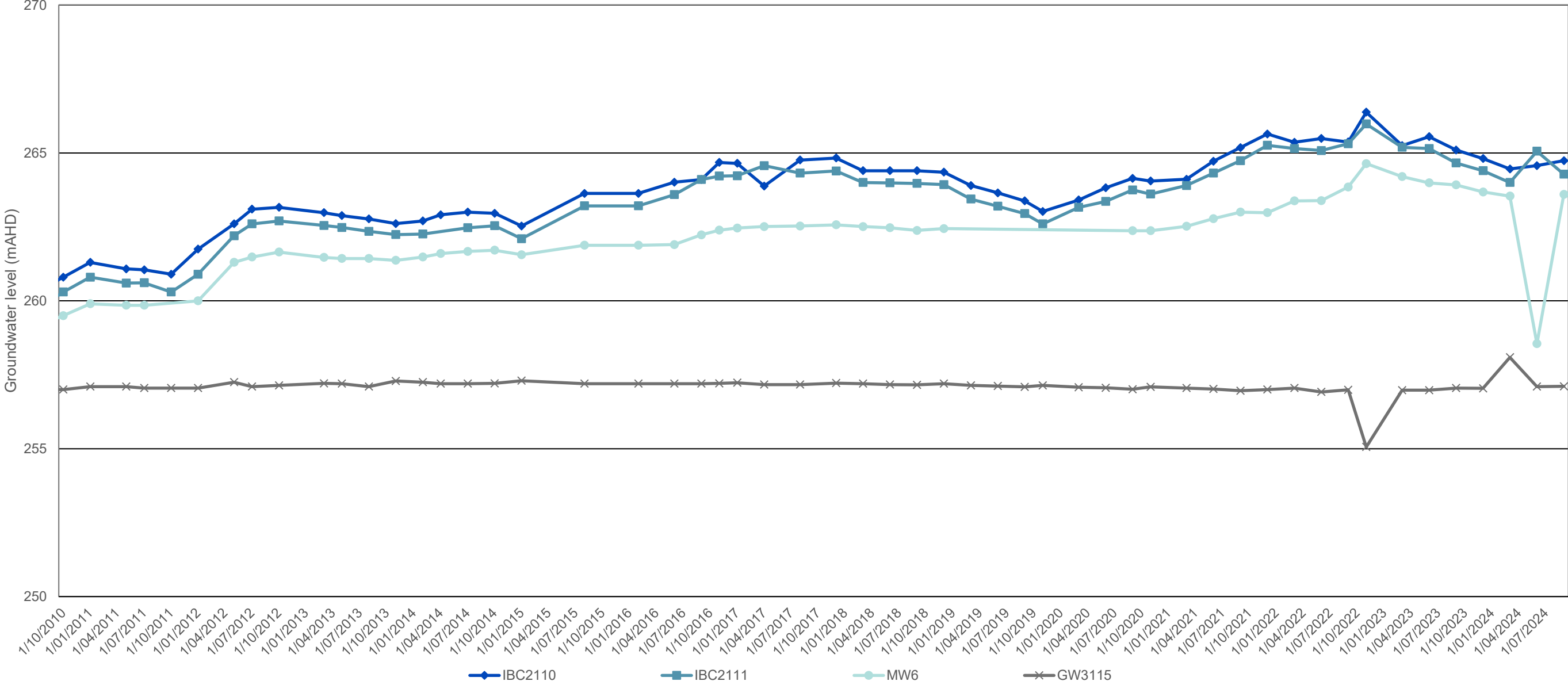
Wilberoi East TEOM PM_{2.5}
January 2024 - September 2024



Air Quality Monitoring Dust Deposition Gauges



Groundwater Monitoring



2024 HV tyre disposal

- 184 HV end-of-life tyres buried to date.

Recycling Update

- Idemitsu are a member of the NSW Minerals council Tyre Stewardship Working Group.
- BCO have commenced their first tyre recycling event, with 42 tyres being collected from site on 30 October 2024.
- An update will be provided after the first recycling process at next year's meeting.



Exploration Q4 2024

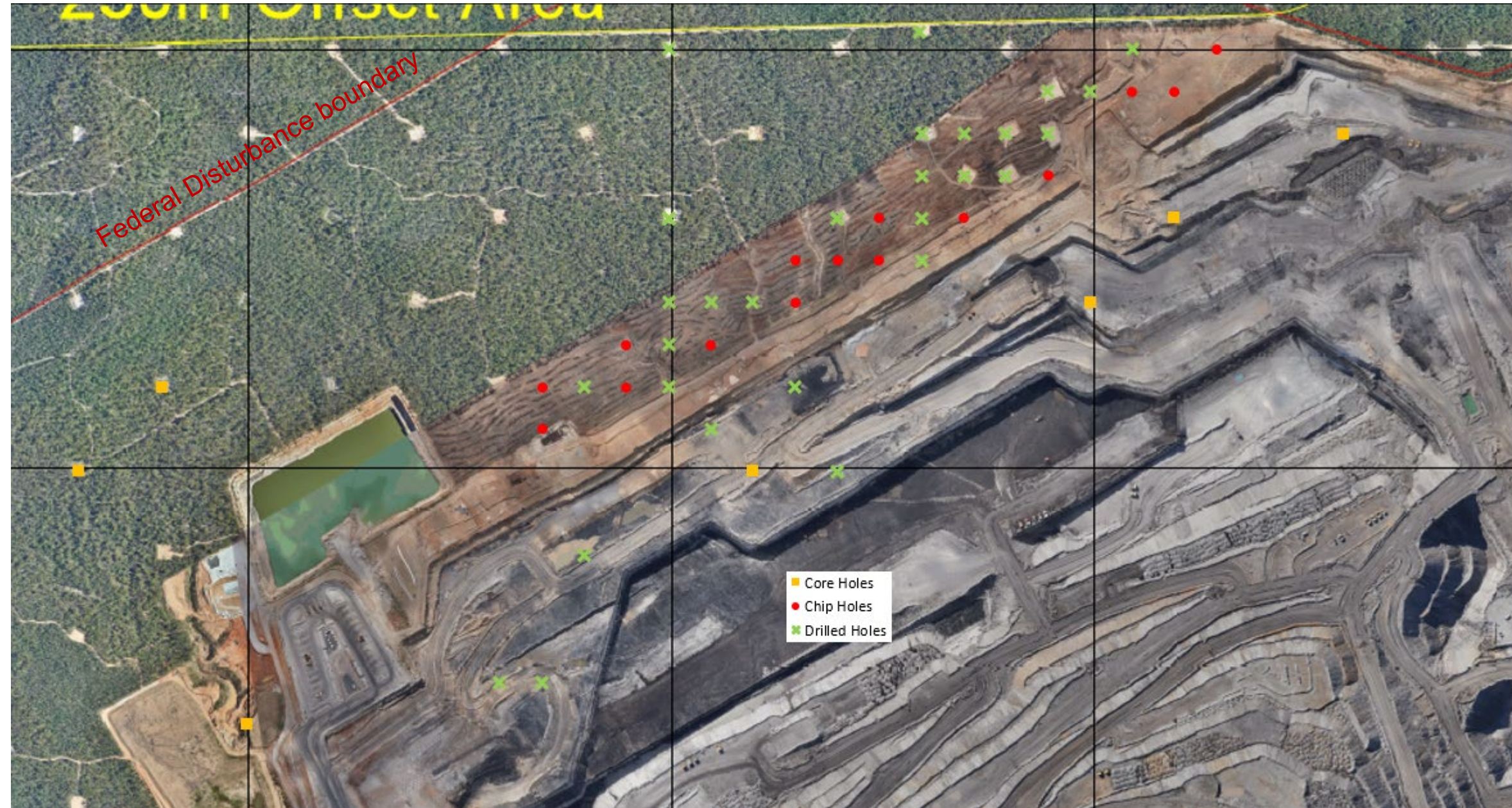
39 Holes Planned 2024

2024 Drilled To Date

- 15 chip holes
- 11 HQ core holes
- 4 LD core holes

2024 Plan (adjusted)

- 22 chip holes – coal structure
- 17 core holes – coal quality
 - 5 large diameter
 - 12 HQ holes



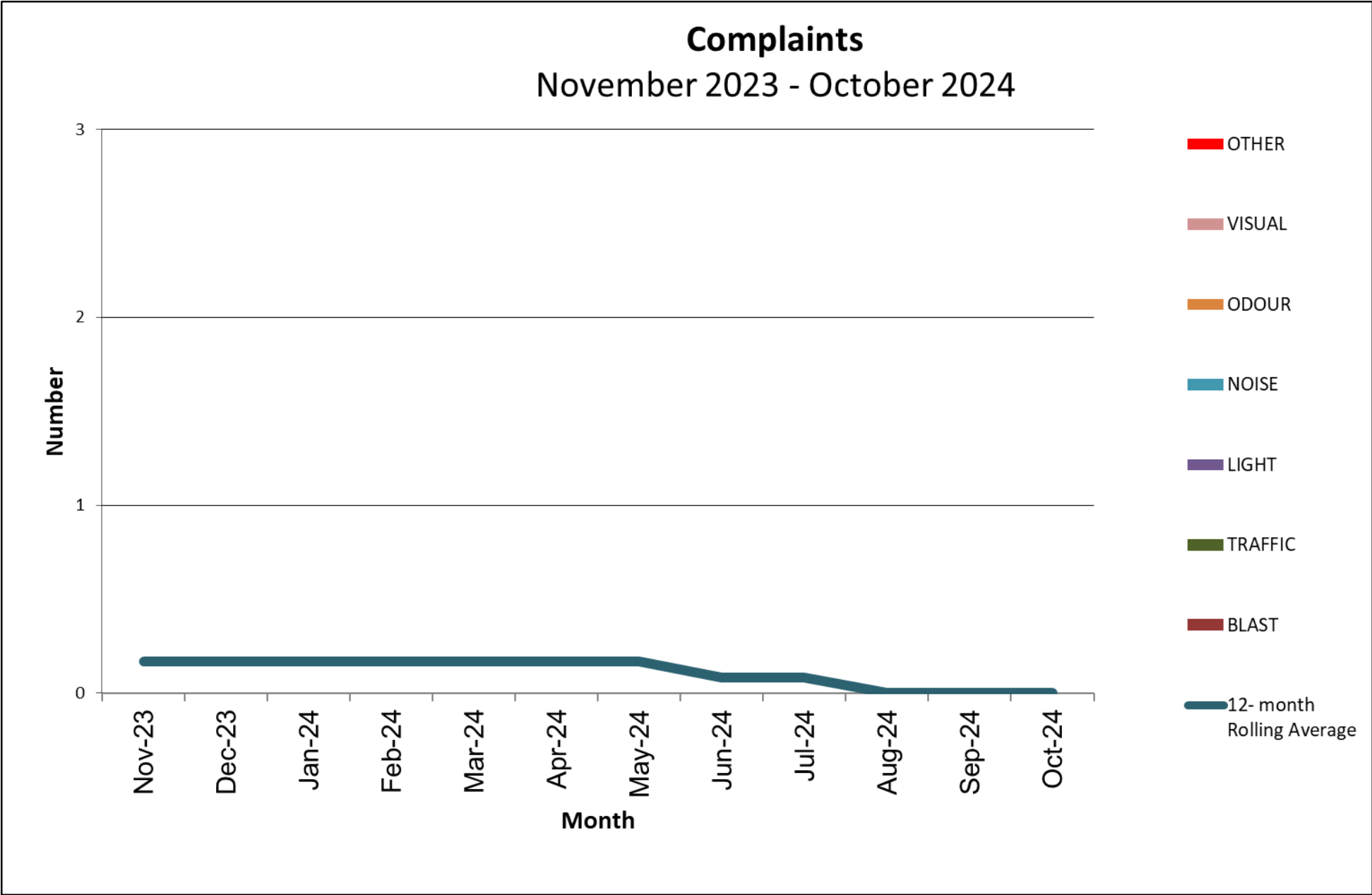
Grinding Groove Relocation

Following consultation with BCO RAPs, a boulder with a Grinding Groove was relocated from a creek line west of MW5 to Velyama.

The Grinding Groove was found in 2009.



Community Complaints



Sponsorship 2024

Organisation	Locality	Approved
Rotary Club of Boggabri (carried from 2023)	Boggabri	\$5000
Awesome Opportunities Basketball	Gunnedah	\$800
Central North Junior Rugby Union	Central North	\$5000
Manilla Show Society	Manilla	\$7879
Gunnedah Show Society	Gunnedah	\$20000
Boggabri Junior League	Boggabri	\$1000
Boggabri & District Rugby League	Boggabri	\$10000
Variety Bash	NSW	\$2000
Narrabri Amateur Fishing Club	Narrabri	\$5000
Narrabri Junior Polocrosse Challenge	Narrabri	\$1686
Maules Creek Campdraft	Maules Creek	\$7500
Sacred Heart School	Boggabri	\$500
Narrabri Show Society	Narrabri	\$5000
Gunnedah & District Soccer Association	Gunnedah	\$5000
Dorothea MacKellar	Gunnedah	\$5000
Baan Baa Community Hall	Baan Baa	\$2500
Gunnedah Bulldogs AFL	Gunnedah	\$5000
Gunnedah Motorcycle Club	Gunnedah	\$2500
Tamworth Triathlon Club	Tamworth	\$1000
Drovers Campfire	Boggabri	\$20000
Manilla Bushmans Campdraft	Manilla	\$3000
Gunnedah Physical Culture	Gunnedah	\$2000
Gunnedah Golf Club	Gunnedah	\$4500

Boggabri Public School	Boggabri	\$500
Wean Races	Wean	\$5000
Manilla Campdraft	Manilla	\$3000
Westpac Helicopters	Tamworth	\$30000
Uncle Will Memorial Team	Coolah	\$4356
GHFC Keepit Commando	Gunnedah	\$5000
Boggabri Business Chamber	Boggabri	\$4000
Gunnedah Lions Club	Gunnedah	\$4104
Gomeri Roos Culture & Sport	Gunnedah	\$4000
Gunnedah Junior Cricket	Gunnedah	\$4682.7
Gunnedah Touch Association	Gunnedah	\$5000
Gunnedah Athletics Club	Gunnedah	\$5000
Peel High School	Tamworth	\$500
Gunnedah Golf Club	Gunnedah	\$2000
Ooranga	Baan Baa	\$10000
Boggabri Nurruby Oosh	Boggabri	\$7500
Boggabri Anglican Church	Boggabri	\$4500
Physie Culture Comp	Gunnedah	\$2000
Boggabri Golf Club	Boggabri	\$5000
Gunnedah Shire Council	Gunnedah	\$5000
Gunnedah Shire Council	Gunnedah	\$10000
Gunnedah Cricket Club	Gunnedah	\$1000
PRAMs	Gunnedah	\$5000
Boggabri Women's Shed	Boggabri	\$5000
Boggabri Fishing Club	Boggabri	\$5000
Gunnedah Anglican Church	Gunnedah	\$1500
Boggabri Golf Club	Boggabri	\$3500
Total Committed		\$264007.70

Current Vacancies

Position	Type	Location	Department
Maintenance Trades – Mechanical, Electrical, Boilermaker	EA	Boggabri	Maintenance
Maintenance Serviceperson	EA	Boggabri	Maintenance
CHPP Technician (2 x Electrical)	EA	Boggabri	CHPP
Maintenance Supervisor	Staff	Boggabri	Maintenance
Mining Engineer	Staff	Boggabri	Tech Services
Senior Mining Engineer – Drill and Blast	Staff	Boggabri	Tech Services
Mining Supervisor x 2	Staff	Boggabri	Mining Operations
Maintenance Supervisor- Excavator Shutdown	Staff	Boggabri	Maintenance
Maintenance Analyst	Staff	Boggabri	Maintenance
Stores Supervisor	Staff	Boggabri	Commercial



General Business



Thank you

