

**Minutes:** Boggabri Coal Community Consultative Committee  
Held at Boggabri Golf Club

**Thursday 13 May 2021**

**Members Present:** Cr Robert Kneale (RK) – Narrabri Shire Council, Danielle Nieuwenhuis (DN) – Boggabri Coal, Geoff Eather (GE) – Community Representative, Hamish Russell (HR) – Boggabri Coal, Mitchum Neave (MN) – Aboriginal Community Representative, Pat Murphy (PM) – Community Representative, Ray Balks (RB) – Boggabri Coal, Richard Gillham (RG) – Community Representative, Roselyn Druce (RD) – Boggabri Coal CCC, Stewart Dunlop (SD) – Boggabri Coal

**Apologies:** Russell Taylor (RT) – Boggabri Coal

**Independent Chair:** David Ross (DR)

**Independent Secretary:** Debbie Corlet (DC)

<b>Agenda Items</b>	<b>Who to Present</b>
1. Welcome, Introductions and Apologies	DR
2. Declaration of Pecuniary or other interests	DR
3. Confirmation of the Minutes of the previous meeting – Thursday 18 February 2021	DR
4. Business arising from the previous minutes – Action List Distributed	DR
5. Correspondence	HR
6. Company Reports and Overview of Activities	SD, HR, DN, RB
7. General Business including Modification 8	ALL
8. Next Meeting – <b>Thursday 12 August 2021</b>	

<b>Agenda Item</b>	<b>Discussion</b>	<b>Action/By Whom</b>
<b>1.</b>	<b>Welcome, Introductions and Apologies</b> – DR welcomed everyone.	
<b>2.</b>	<b>Declaration of pecuniary or other interests</b> – DR shared that he is paid a fee to chair these meetings as is DC for typing the minutes. RG has a property that falls into the ‘Zone of Affectation’ for acquisition, and he also leases country from Boggabri and WHC.	
<b>3.</b>	<b>Confirmation of the minutes of the previous meeting (18 February 2021)</b> – The CCC endorsed the minutes as an acceptable record of what was discussed although RD advised that she had typed up a lot of extra	

	information which wasn't included in the minutes and why she contacted DR. DR wanted to thank Tim for all his help and support over the years.	
4.	<p><b>Business Arising from the previous minutes</b></p> <ul style="list-style-type: none"> <li>• Provide update for housing as required in VPA (ongoing action).</li> <li>• Provide cross section figure of BCO's coal seams.</li> <li>• Make / install signs for cultural area at Gins Leap.</li> </ul> <p>While further details are provided in Section 6, HR confirmed that they have installed signage on the gate. MN – The sign is up there. Other places have a sign with scale of penalties – destruction of archaeological areas and what the penalties can be.</p>	ACTION 1 – Idemitsu to add penalties to signs
5.	<p><b>Correspondence</b></p> <p><b>NSW Department of Planning, Industry &amp; Environment</b></p> <ul style="list-style-type: none"> <li>• 3 Yearly Independent Environmental Audit report and BTM Groundwater Model review accepted by DPIE.</li> <li>• Annual Review submitted 29/4/21. Extension granted to the due date for Conservation Agreements over Biodiversity Offset Areas.</li> </ul> <p><b>National Parks Wildlife Service &amp; Biodiversity Conservation Trust</b> – Exchange of information re long term security of biodiversity offset properties.</p> <p><b>Department of Agriculture, Water &amp; Environment</b> – Federal Approval Audit Report submitted. Ongoing consultation prior to being finalised.</p> <p><b>Environment Protection Authority (EPA)</b> – Monthly Noise Reports. EPL 12407 Annual return submitted. Letter received regarding blast in July 2020. No regulatory action to be taken.</p> <p><b>Forestry Corporation NSW</b> – Continuing negotiations about access / compensation agreements.</p>	
6.	<p><b>Company Reports and Overview of Activities by Boggabri Coal</b></p> <p><b>Housing VPA – General Housing</b></p> <p>SD observed that the mine is reviewing options for construction of housing in 2022. BCO currently own 13 blocks in Boggabri but is not required to build on each of these. An architect is currently being engaged to develop initial design proposals for discussion with Council. Construction of the ELF is complete. Internal fit out complete. Senior staff roles filled. Opening late May (subject to licence).</p> <p>This facilitated a discussion on who will own the blocks and who the houses are being built for (lower income earners versus miners).</p> <p>RG – The houses were to be built for 'lower income' local residents, not those working at the mine.</p>	

HR observed that BCO builds the houses for sale. There is no timing factor as we could sell them now or after the mine has gone. It is to alleviate additional housing pressure in the area. With respect to who the houses are to be sold to, HR noted that the details are covered in the Statement of Commitment as it refers to in our approval and all the details are in there. We'll take this on board though and look at the finer detail.

SD – There would be restrictions and constraints and so all needs to be considered. There are lots of options.

MN – 13 houses in Boggabri area but what's happening with the Narrabri area?

SD – It's not 13 houses but 13 blocks of land to build townhouses in Boggabri, so maybe only 7 houses over those 13 blocks, because of ELF obligations. Our priority is Boggabri, but we have an obligation in Narrabri.

With respect to the ELF, SD noted that we expect to have around 6 staff members. We have had a very sound response. Can probably have around 26 kids.

**Exploration Update** – 40 exploration holes are planned to be drilled this year. 14 completed to date in 2021.

**2021 Completed Tree Clearing** – 15.91 ha completed clearing (mining) and 2.72 ha completed clearing (exploration).

**Production Update** – 2021 YTD – Overburden – Moved 18,854,971 bcm. Coal mined was 2,640,585 T and coal railed was 2,444,645 T.

**Correspondence** –

RD – In regard to the Conservation Agreement that will be sorted by 30 June 2022. Is this going to happen this time?

HR – That is the due date for our State Approval, which we are working towards. Yes, we are on track to achieve the Conservation Agreements. Biodiversity takes a long time to review and that plays a big part on those timeframes as well.

RD – I think a property was missed out on the last Minutes?

MN – Can we get a copy of your Approval. What are the offsets / the hectares / the biodiversity?

RD – How many actual properties come under this approval?

DN – There are complexities over the properties with landowners. We've been ironing out how many Agreements need to be in place. Maybe 20 or 22 individual Agreements with combination of areas that are offset. Think in total there are 27 properties.

SD observed that some are owned 100% by Boggabri Coal and some are partially owned by joint venture parts.

ACTION 2 - HR to check to see if a property was missed

ACTION 3 – HR to include slides on what is in the Approval (offsets, hectares, biodiversity etc).

<p>A discussion was instigated by MN seeking a guarantee that the land and offsets will not have gas pipes running through those properties?  SD and HR responded that this cannot be guaranteed. There'll be a Biodiversity Conservation Agreement over that property. If someone wants to do something on that property, it'll have to go through the as we have no control over what happens in the future. We own the property and have the property rights but in terms of Government approvals or government decision – we may not have rights at all times.  RK and DR also observed that the Hunter Gas pipeline CCCs have been inactive for a long time. We don't know any of that information and it is purely hypothetical. APA don't have the exact routing of the proposal and there is no precise information at the moment.</p> <p>MN – Are you under the pump to get your licence for your biodiversity offsets.  HR – We share your concerns. We are pursuing Conservation Agreements and will do so feverishly to satisfy our approval obligations and due dates.  HR – We can present on our Biodiversity Offset Area's for the next CCC - slides on scale and scope of biodiversity / talk about the properties and the ag. Offset properties / broken into sections. Put names of the properties on the slides as well.</p> <p>RD instigated a discussion about the burying of tyres and the implications for the mine's EPL. HR responded that that disposal of end-of-life tyres can be undertaken in accordance with our agreement. It is not currently contemplated in our EPL – it is in our Project Approval. It is referred to in our Environmental Assessment and included in a Management Plan. RD questioned whether it is a breach of the EPL. HR – The EPA have given the concurrence.  DR – Is there a glitch in the paperwork?  HR – Yes, the EPL is meant to reflect all the requirements.  RD –If it's not written into it, you've done something that is a breach on the license. That's how the community will look at it. Most of the EPL licenses have approval to do these things. I can't see that variation on your EPL 12407. Our community is really upset about that.  HR – We stopped the activity and we got approval to continue.  HR – The condition of the EPL in the Act that they must make it current with the legislation. Born 2006 and now at 2021, at a point to make a change but didn't change the EPL.</p> <p><b>Bore extraction since previous meeting</b> – BCO has extracted 99.9 ML from its alluvium bores since the 18/2/2021.</p> <p>HR – A bit over 1ML a day is extracted from the bore field. We are going to off-load some of our water allocations – river licences. Decommissioned not pumping from the River.  In response to a question from RG, HR noted that BCO has a requirement in the Water Management Strategy to share water with the other two nearby mines. We do talk about sharing water but no need to share water recently. There's been a discussion about it lately as Tarrawonga was looking to get rid of excess water, but we don't need it.</p>	<p>ACTION 4 – Monitor the information that does become available on the gas proposal for any potential changes</p> <p>ACTION 5 – TSR graph / slide on scale and scope of biodiversity. With names of the properties</p> <p>ACTION 6 – HR to provide link to Project Approval re tyre disposal</p>
--	---

	<p><b>Community Complaints</b> – July 2020 – there was 1 event that listed 2 complaints.  RG – What’s the percentage of trees that are growing?  HR – We have a varying degree of success. Some areas are going really well. During the drought, we procured a significant number of tube stock and then the drought hit. We planted tube stock where there was no water in the profile. We took the position that we might as well plant them and supplement with hand watering. In some areas it was a failure as there was no moisture in the soil and the water just fell through the cracks. Some areas are going great. Along the river, some are starting to come good after all the rain.</p>	
<p><b>7.</b></p>	<p><b>General Business</b></p> <p><b>Boggabri Coal Mine Proposed Modification Update</b>  BCOPL is seeking to modify the existing Project Approval (SSD 09_0182). The proposal consists of:</p> <ul style="list-style-type: none"> <li>• Increasing the approved maximum depth of mining down to the Templemore Coal Seam.</li> <li>• Recover an additional 61.6 million tonnes (ROM) coal resource within the currently approved Mine Disturbance Boundary. Extend mine life by six years to 2039.</li> <li>• Construct a specifically designed fauna movement crossing across the existing haul road between the Southern Rehabilitation Area and the western side of the regional biodiversity corridor.</li> </ul> <p><b>What is changing due to the proposed Modification?</b></p> <ul style="list-style-type: none"> <li>• <b>Approved Mine Life</b> – proposed to change by six years to 2039.</li> <li>• <b>Project Disturbance</b> – 2047 ha. No change proposed to approved disturbance boundary. Changed proposed due to Fauna Movement Crossing (approx. 1.1 ha direct disturbance).</li> <li>• <b>Annual Production</b> – ROM 8.6 Mtpa average production with maximum proposed at 9.1 Mtpa. Eight additional coal seams to be targeted below Merriown down to and including Templemore seam.</li> </ul> <p>MN – In regard to comments about tyres. What happens with the waste oil?  HR – We recycle as much as possible.  MN – Between all the mines why isn’t there a recycle centre set up already. I want to create jobs for our people that they can run independently from the mines. It could be a good opportunity for the mine and indigenous people.  SD – We opened up a process and can discuss possibilities at the next CCC and what the opportunities could be.  MN – Scar Trees – Raps have concluded (6 or 7 trees) would be suitable for display at Red Chief – others to be returned to approximately where they previously came from. Stakeholder meeting soon.</p> <p>SD – We have a financial commitment to the childcare centre. That means that even if spots aren’t filled, we will still support the centre, financially. We are confident it’ll go well.</p> <p>RD – Was the Mod8 application still under 4.55 or has that changed?</p>	<p>ACTION 7 – HR to provide numbers on tyres and how much oil is recycled / what is recycled</p> <p>ACTION 8 – BCO to report back each meeting re tyre recycling</p>

<p>HR – Exactly the same section that it'll be assessed under.  RD – Under minimal impact.  RB – Yes, publicly exhibited. We don't control the timeframe but the Regulators and the Planning Department both at state and federal level control when it goes to exhibition.</p> <p>DR – Modification – Replaces Statement of Environmental Effects (SSE – old requirement) Submitting a Modification Report is now a requirement.</p> <p>Environmental Assessment studies complete, public display expected to commence July 2021. Mod 8 Newsletter #02 will be distributed to interested parties before public exhibition of the Modification Report.</p> <p><b>Overview of MOD8 Findings</b>  Noise and Blasting. Air Quality. Groundwater. Surface Water. Biodiversity. Aboriginal Cultural Heritage &amp; Historic Heritage. Soils, Land and Rehabilitation. Traffic &amp; Transport. Social and Additional considerations.</p> <p>RB – Explained that this is not an extensive list and what was selected was because they thought it would be of interest. If there is anything else, please let BCO know, and they can report back at the next CCC meeting.</p> <p>RB – Predicted in the order of 500 megalitres into groundwater.  RD – That's a considerable amount.  RB – I think around 750 megalitres from memory.</p> <p>RD – What colour will the rock drains be? Don't want white.  HR – We'll find out and report back at the next CCC meeting.</p> <p>MN – Is that (wildlife corridor) going to stay there? Guaranteed?  RB – We can only mine to the yellow section (where the triangle section is). We haven't completed the archaeological assessment as yet as it is exploration data. We'll make that assessment then. If you go to the southwest of the edge – there's no obvious coal reserves in that area but in the area between the yellow and red, but we don't have the data to support as yet but looks to be extremely high for mining. We have a project approval that goes out to the red line and the clause that says 250 metres of that red line, so where you see the green spots can be approved after an assessment about the viability and then provide a submission to the Secretary to change that approval or lean on that approval.</p> <p>RB – We'll keep everyone updated as the process goes through each step and stage.</p> <p><b>Tree Troff Update</b>  Frequented by birds, possums and goannas. Monitoring program currently in place servicing all 10 Tree Troff.</p>	<p>ACTION 9– BCO to report exact number of megalitres</p> <p>ACTION 10 – BCO to report back what colour the rock drains will be</p> <p>ACTION 11 – Newsletter and exhibition details to be sent to David who will provide to CCC members</p> <p>ACTION 12 – HR to present analysis data from the Tree Troff</p>
---	---

	<p><b>Biodiversity Offset Areas</b>  HR noted that the CCC Biodiversity Offsets Property site visit to be arranged. April’s pest management program was rained out, the next program commenced on 10 May and will run for 2 weeks. Fencing occurring on Merriendi. Offset tree planting to commence in winter on Merriendi, Braefield and Nioka North. Approx. 86,000 Tubestocks to be planted.</p>	
<p><b>8.</b></p>	<p><b>Next meeting date</b> - Next meeting <b>Thursday 12 August 2021</b> at the Boggabri Golf Club at 9:30 am.</p>	

Meeting Closed at 12:00 pm

**Appendix 1: Actions**

<b>Page No</b>	<b>Action No</b>	<b>Description</b>	<b>Date Raised</b>
2	1	Add penalties to signs	13 May 2021
3	2	HR to check to see if a property was missed.	13 May 2021
3	3	HR to include slides on what is in the Approval (offsets, hectares, biodiversity etc).	13 May 2021
4	4	DR and HR to monitor the information that does become available on the gas proposal for any potential changes	13 May 2021
4	5	TSR graph / slide on scale and scope of biodiversity. With names of the properties	13 May 2021
4	6	HR to provide link to Project Approval re tyre disposal	13 May 2021
5	7	HR to provide numbers on tyres and how much oil is recycled / what is recycled	13 May 2021
5	8	BOC to report back each meeting re tyre recycling	13 May 2021
6	9	BCO to report exact number of megalitres	13 May 2021
6	10	BCO to report back what colour the rock drains will be	13 May 2021
6	11	Newsletter and exhibition details to be sent to David who will provide to CCC members	13 May 2021
6	12	HR to present analysis data from the Tree Troff	13 May 2021





# CCC Meeting May 2021

13<sup>th</sup> May 2021



# Agenda

May 2021



- Confirmation of record keeping
- Apologies
- Declaration of pecuniary or other interests
- Confirmation of minutes
- Business arising from previous minutes
- Correspondence
- Company reports and overview
- General business
- Next meeting

## Business Arising from Previous Minutes

Actioned Against	Action to be done
BCOP	Provide an update for housing as required in VPA
BCOP	Provide a cross section of BCO's coal seams
BCOP	Make/install signs for cultural area at Gins Leap





## Housing VPA

### General Housing

- Reviewing options for construction of housing in 2022
- BCO currently own 13 blocks in Boggabri
- Architect currently being engaged to develop initial design proposals for discussion with council
- Target is to have a plan in place for 2022 budget cycle

## Housing VPA

### Early Learning Facility

- Construction complete
- Internal fit out complete
- Senior staff roles filled
- Opening late May (subject to licence)

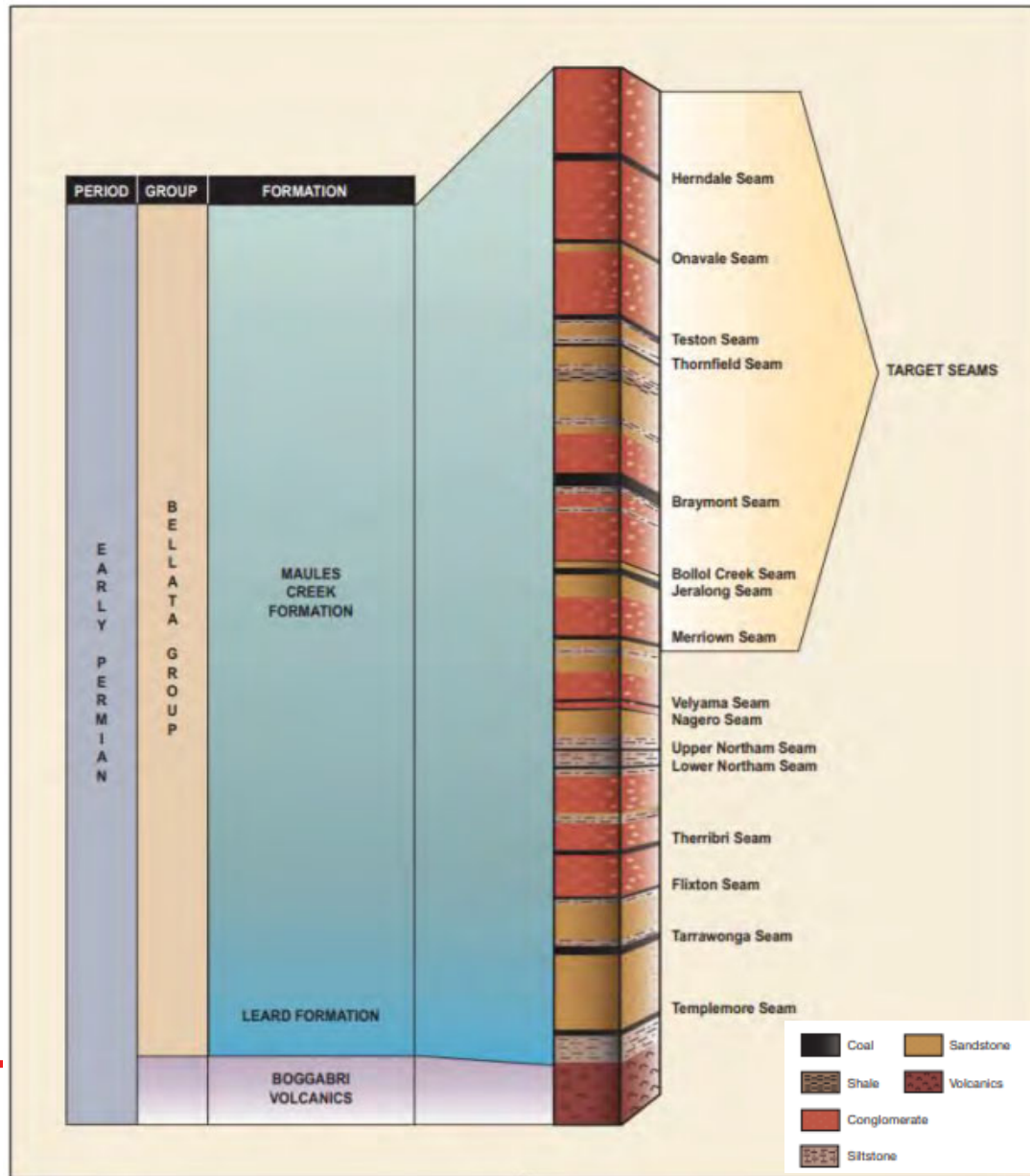


# Early Learning Facility





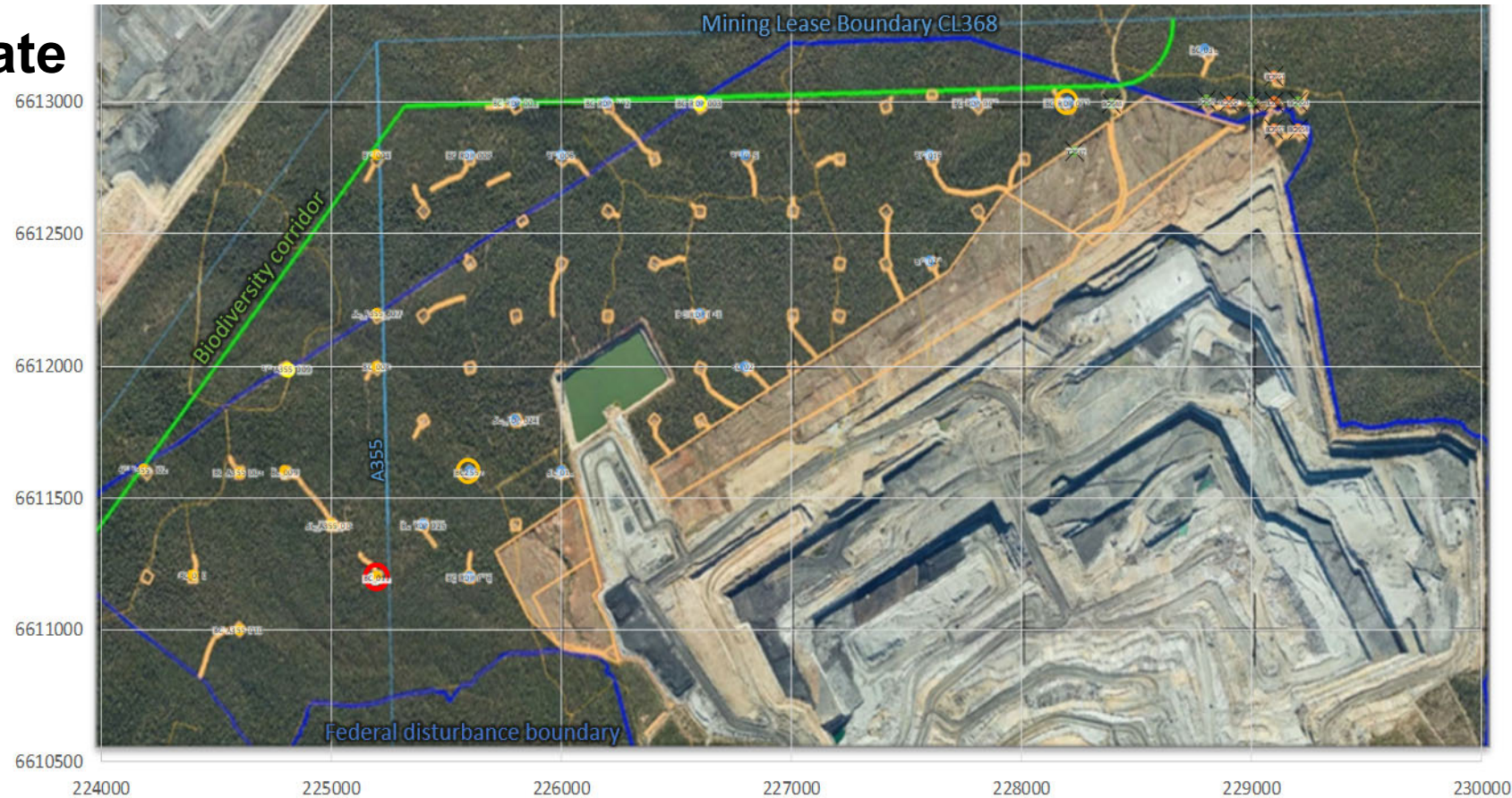
# Cross section of BCO's Coal Seams





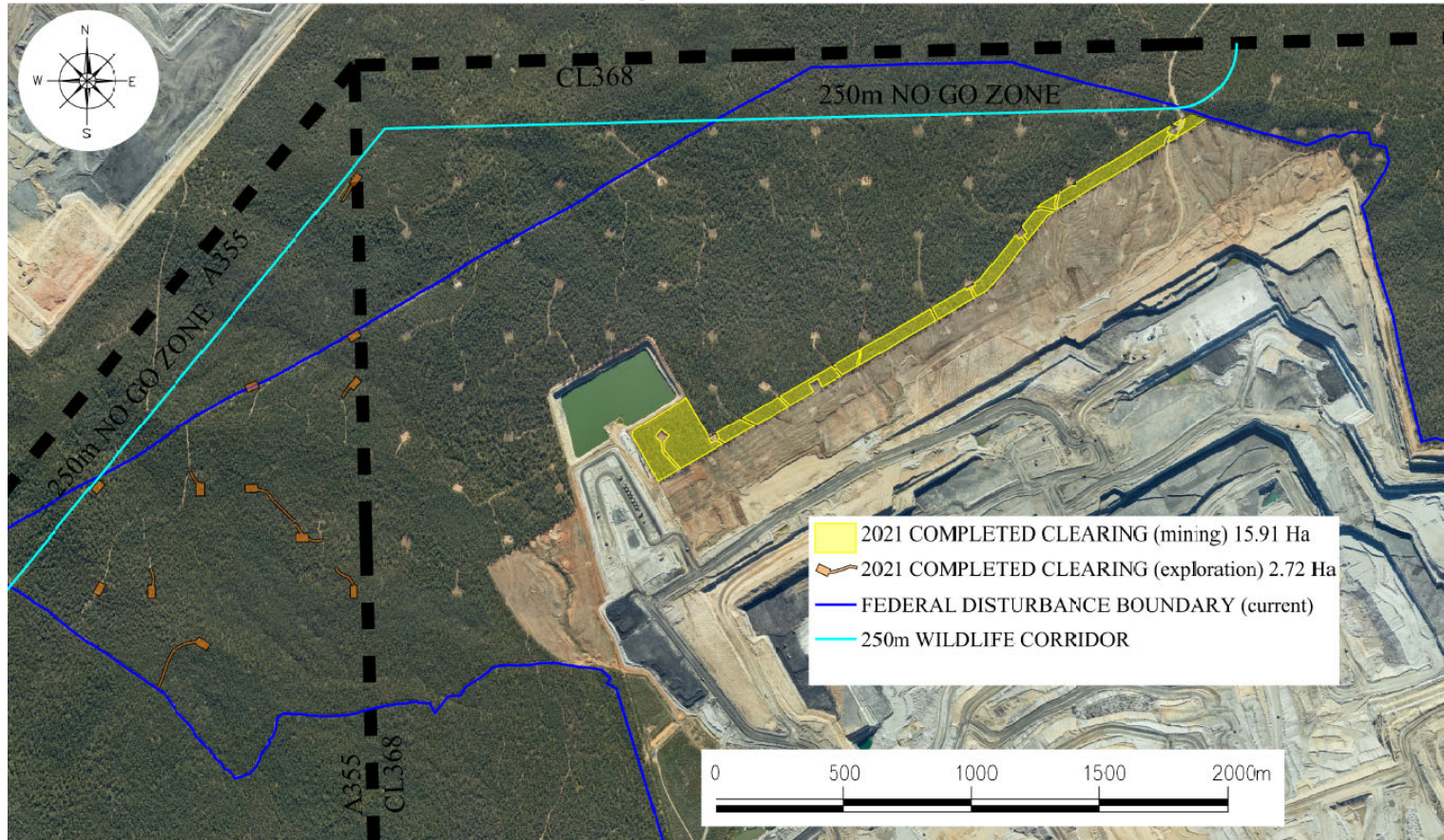
## Exploration Update

- 40 exploration holes are planned to be drilled this year.
- 14 completed to date in 2021





# 2021 Completed Tree Clearing





## Production Update

2021 YTD:

Overburden

Moved: 18,854,971 bcm

Coal mined: 2,640,585 T

Coal railed: 2,444,645 T





## Correspondence

### NSW Department of Planning, Industry & Environment

- 3 Yearly Independent Environmental Audit report accepted by DPIE
- BTM Groundwater Model review accepted by DPIE (NRAR feedback to be incorporated in next model review)
- Annual Review submitted 29/4/21
- NSW Resources Regulator advised of intention to visit site as part of their Targeted Assessment Program
- Extension granted to the due date for Conservation Agreements over Biodiversity Offset Areas

### National Parks Wildlife Service & Biodiversity Conservation Trust

- Exchange of information re: long term security of biodiversity offset properties





## Correspondence

### Department of Agriculture, Water & Environment

- Federal Approval Audit Report submitted. Ongoing consultation prior to being finalised

### Environment Protection Authority (EPA)

- Monthly noise reports
- EPL 12407 Annual return submitted
- Letter received regarding blast in July 2020. No regulatory action to be taken.

### Forestry Corporation of NSW

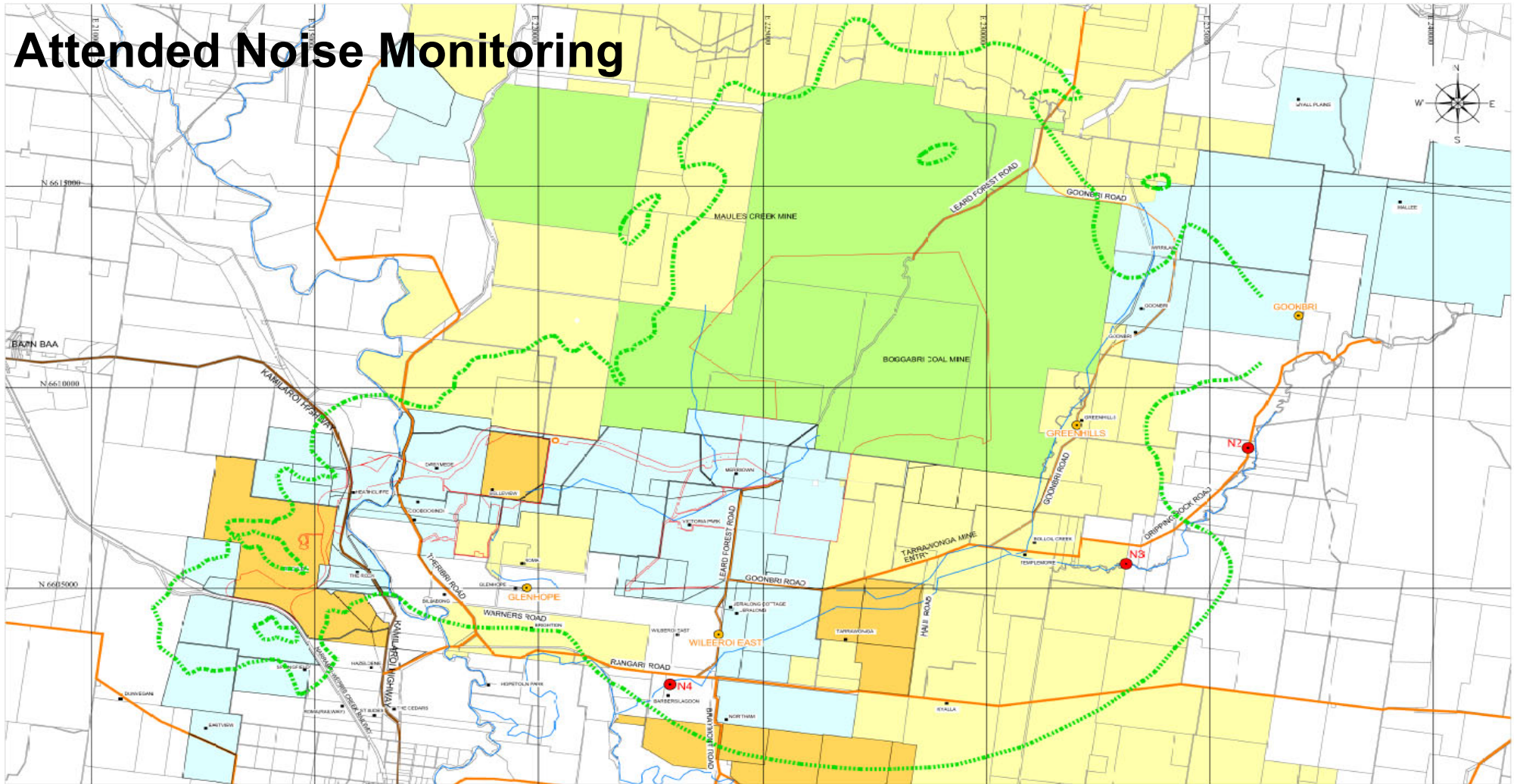
- Continuing negotiations about access/compensation agreements



 idemitsu  
Company Reports and Overview



# Attended Noise Monitoring



REV	REVISIONS	DATE

**General Legend**

- Noise Monitor (attended)
- Noise Monitor (Real Time)
- ⋯ Max 35dB(A) noise contour
- Residence / Property name
- Creek / River
- Roads
- Kamilaroi Highway

QUALITY RECORD			
REVIEW	NAME	SIGNATURE	DATE
DRAWN	NIGLADNER		14/7/20
DWG CHECKED BY:			

Property Ownership	
<span style="color: lightblue;">■</span>	Boggabri Coal
<span style="color: yellow;">■</span>	Boggabri Coal & Whitehaven Coal Mining
<span style="color: lightgreen;">■</span>	Whitehaven Coal
<span style="color: lightyellow;">■</span>	State Forest
<span style="color: red;">⋯</span>	Boggabri Coal Project Approval Boundary

SCALE  
See Grid (500m)

FILE RIF: Noise Monitoring locations - 44720.dwg
PLOT FILE: Noise Monitoring locations 140720.pdf
ORIG. FILE SIZE: A3

## Boggabri Coal Operations

Noise Monitoring Locations

DRAWING NO: 140720a	
REV	

Completion of the Quality Record is evidence that this drawing has been verified conforming with the requirements of the Quality Plan. Where the Quality Record is incomplete, all information on this drawing is intended for preliminary purposes only as it is unchecked.



## Attended Noise Monitoring

Attended Noise monitoring location	LAeq, 15min Impact Assessment Criterion	May-20	June-20	July-20	Aug – 20	Sept – 20	Oct – 20	NOV - 20	Dec - 20	Jan - 21	Feb - 21	Mar - 21	Apr - 21
Sylvania	35	IA	IA	IA	28	IA	IA	IA	22	IA	IA	<25	IA
Picton	35	IA	IA	28	<25	IA	IA	IA	IA	IA	IA	IA	IA
Barbers Lagoon	35	IA	25	IA	IA	27	IA	IA	IA	IA	<20	IA	IA

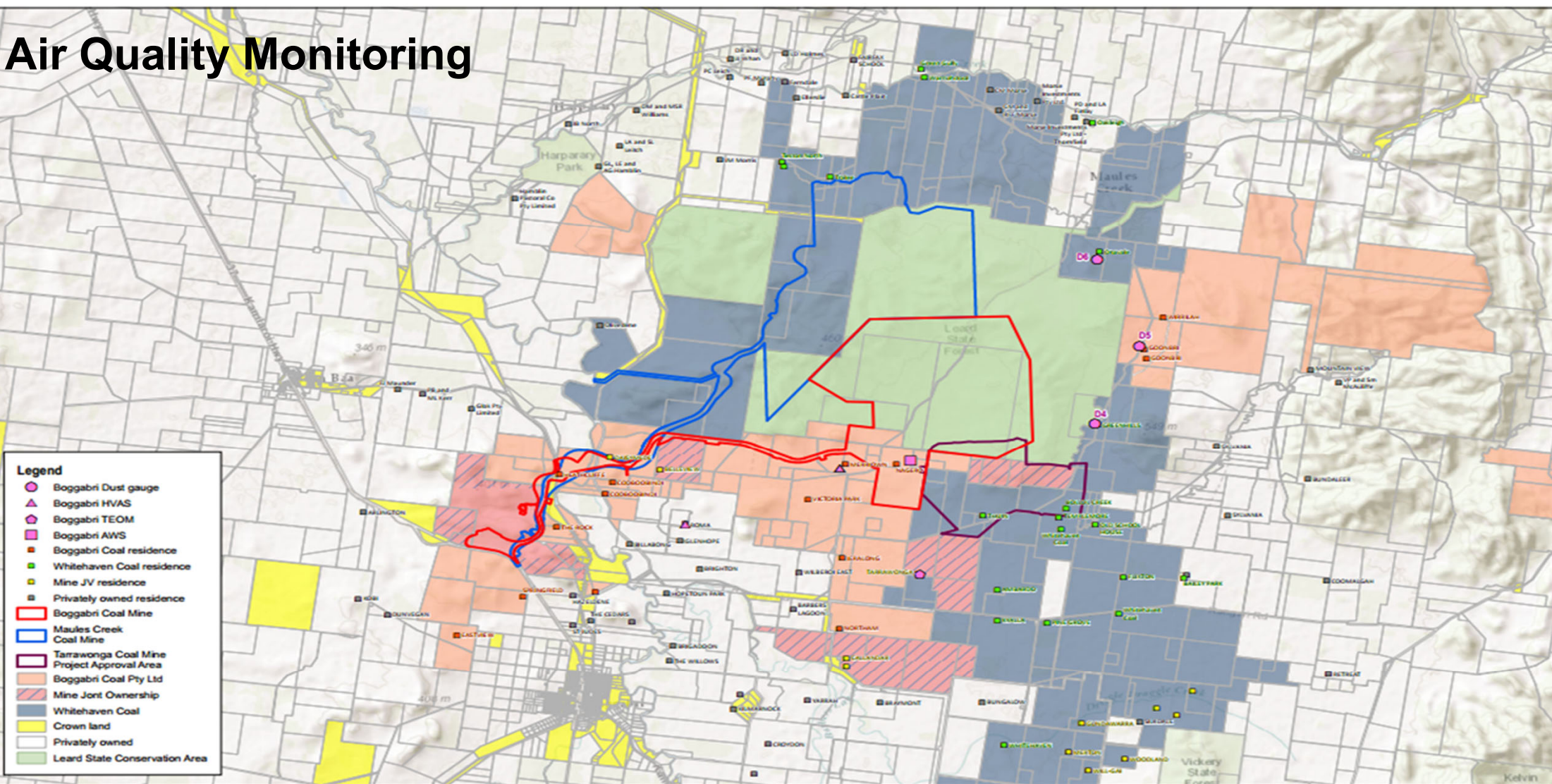
IA: No site noise was audible at the monitoring location

NM: Some site noise was audible but could not be quantified

There were no exceedances of EPL or Project Approval criteria during the monitoring.



# Air Quality Monitoring



- Legend**
- Boggabri Dust gauge
  - Boggabri HVAS
  - Boggabri TEOM
  - Boggabri AWS
  - Boggabri Coal residence
  - Whitehaven Coal residence
  - Mine JV residence
  - Privately owned residence
  - Boggabri Coal Mine
  - Maules Creek Coal Mine
  - Tarrawonga Coal Mine Project Approval Area
  - Boggabri Coal Pty Ltd
  - Mine Joint Ownership
  - Whitehaven Coal
  - Crown land
  - Privately owned
  - Leard State Conservation Area

Map: 2200545A_GIS_F021_A1	Author: SuansrR	
Date: 15/11/2016	Approved by: -	
<p><small>Data Source: -</small>  <small>Source: Esri, HERE, DeLorme, Intermap, increment P Corp., GEBCO, USGS, FAO, NPS, NRCAN, GeoBCN, IGN, Kadaster NL, Ordnance Survey, Esri Japan, METI, Esri China (Hong Kong), Swisstopo, Mapbox, VMAP, Swisstopo, © OpenStreetMap contributors, and the GIS User Community</small></p>		<p>Scale: 1:120,000</p> <p>Scale ratio correct when printed at A3</p>

**WSP** | **PARSONS BRINCKERHOFF**

Boggabri Coal's Air Quality Monitoring

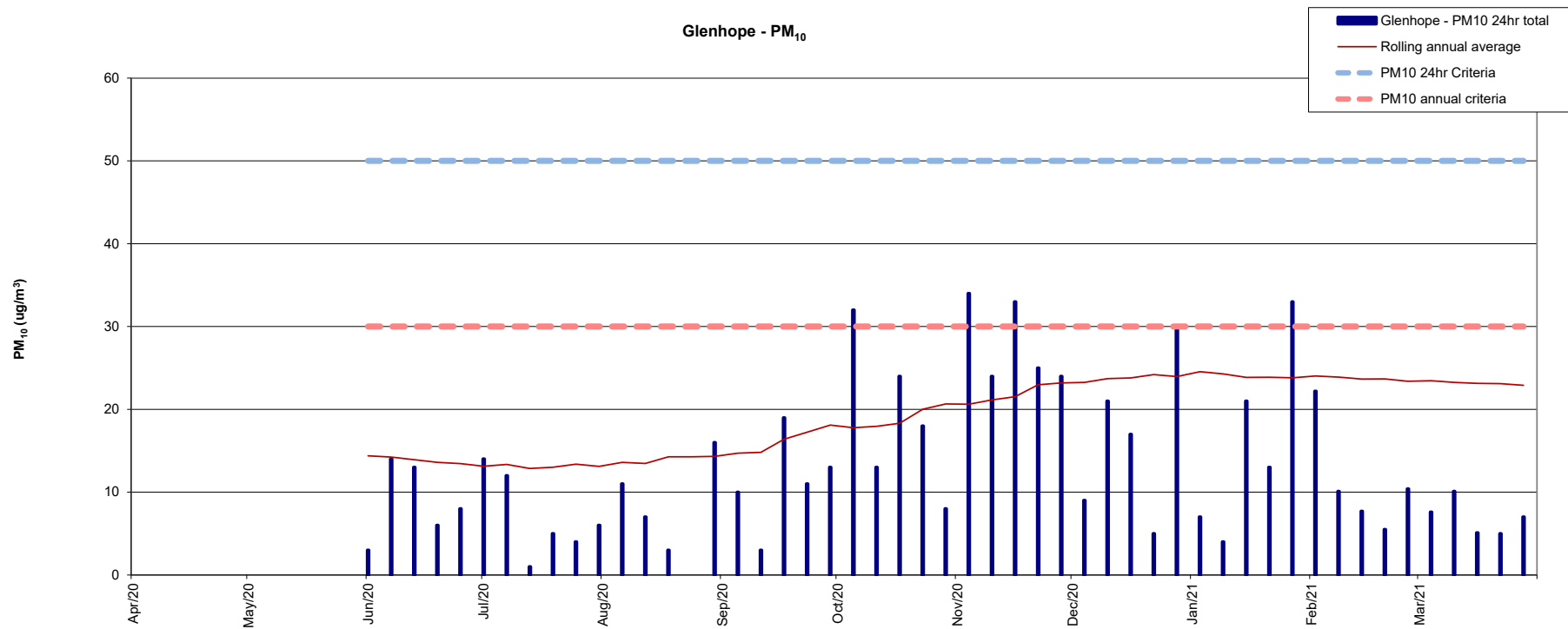
16

[www.wsp-pb.com/](http://www.wsp-pb.com/)

© Parsons Brinckerhoff Australia Pty Ltd (PBA) is the copyright owner of the drawings, information and data contained in this information. This document and the information contained herein are the property of PBA. This document and the information contained herein are for the use of the recipient and the recipient may not be used, copied or reproduced in whole or part for any purpose other than that which it was supplied for. PBA makes no representation, warranties, conditions, limitations or any other obligations in relation to the information. WSP Certified Quality System is ISO 9001. Equipment used in the production of this information is the property of Parsons Brinckerhoff Australia Pty Ltd.



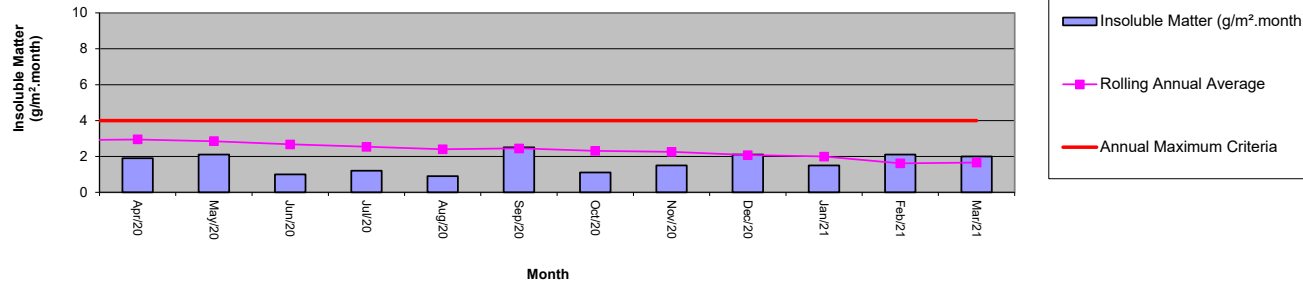
# Air Quality Monitoring



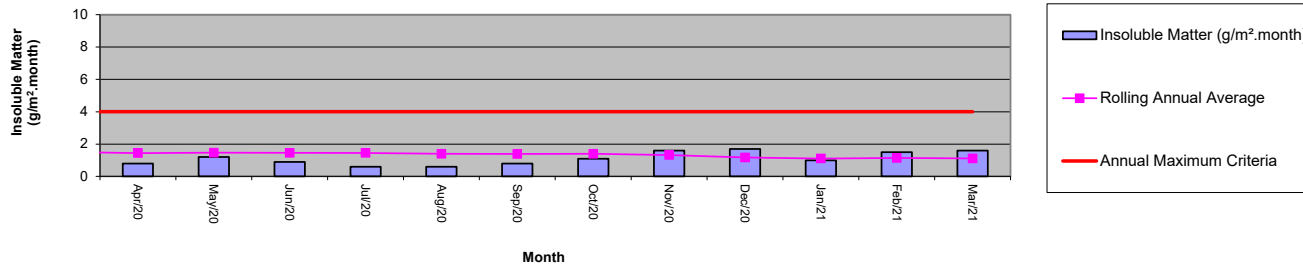


# Air Quality Monitoring

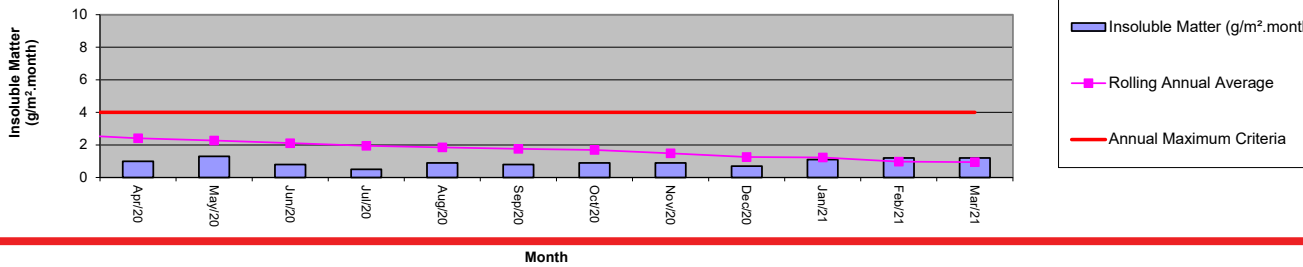
Dust Deposition Gauge D4 - Greenhills



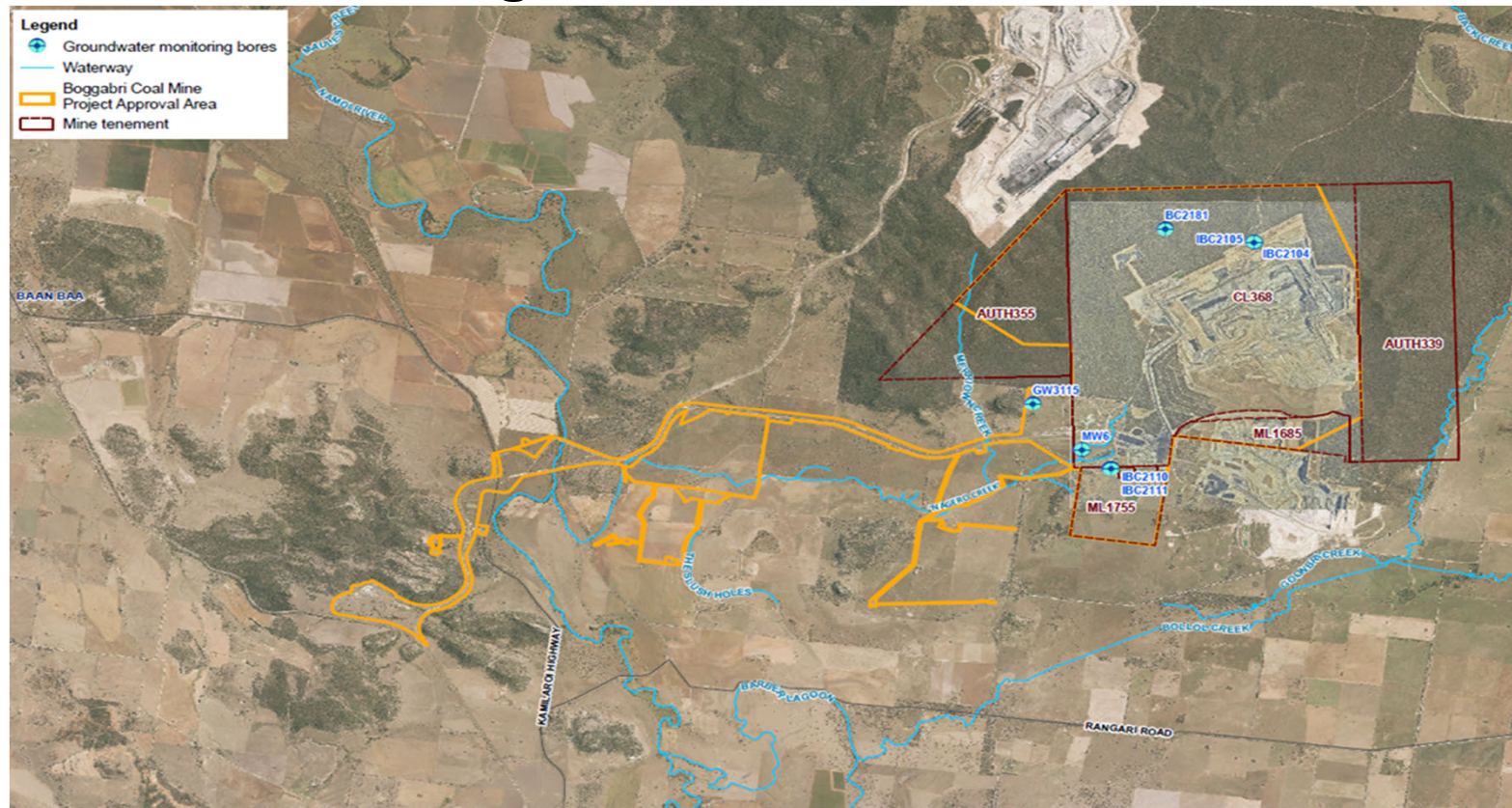
Dust Deposition Gauge D5 - Goonbri



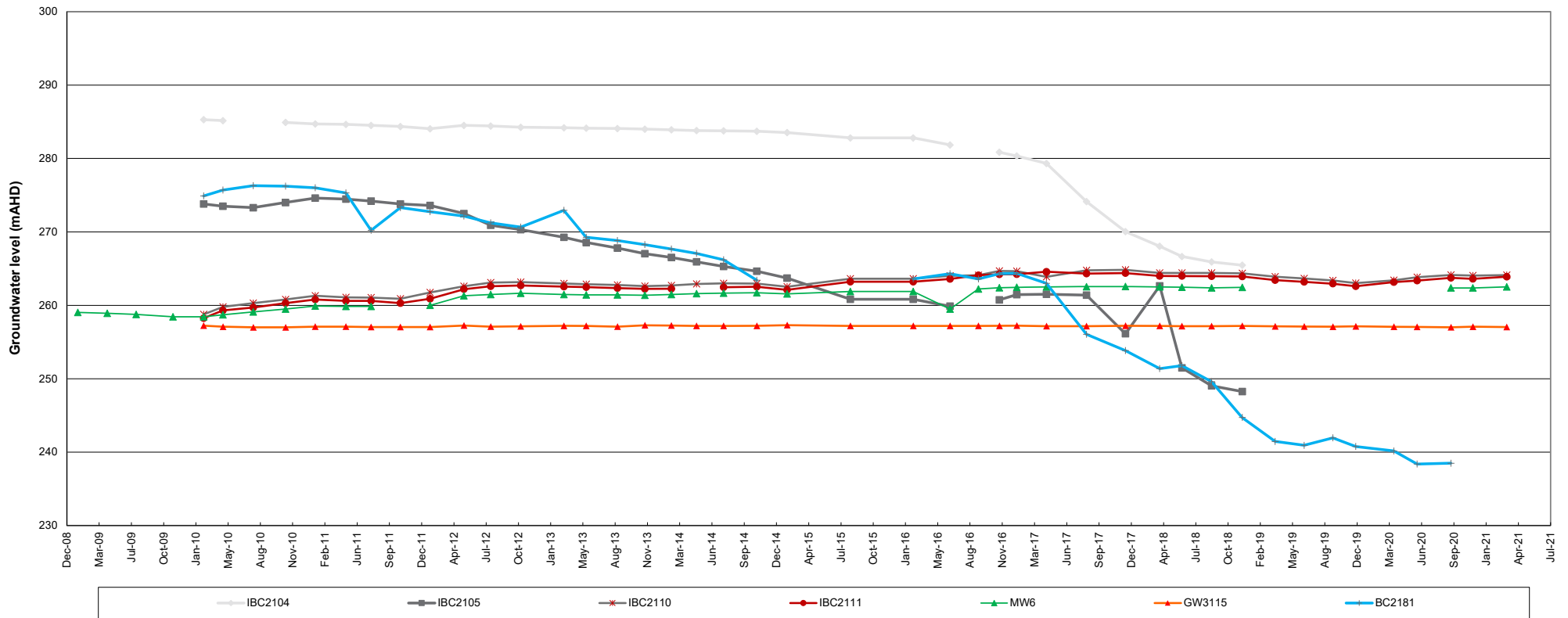
Dust Deposition Gauge D6 - Onavale



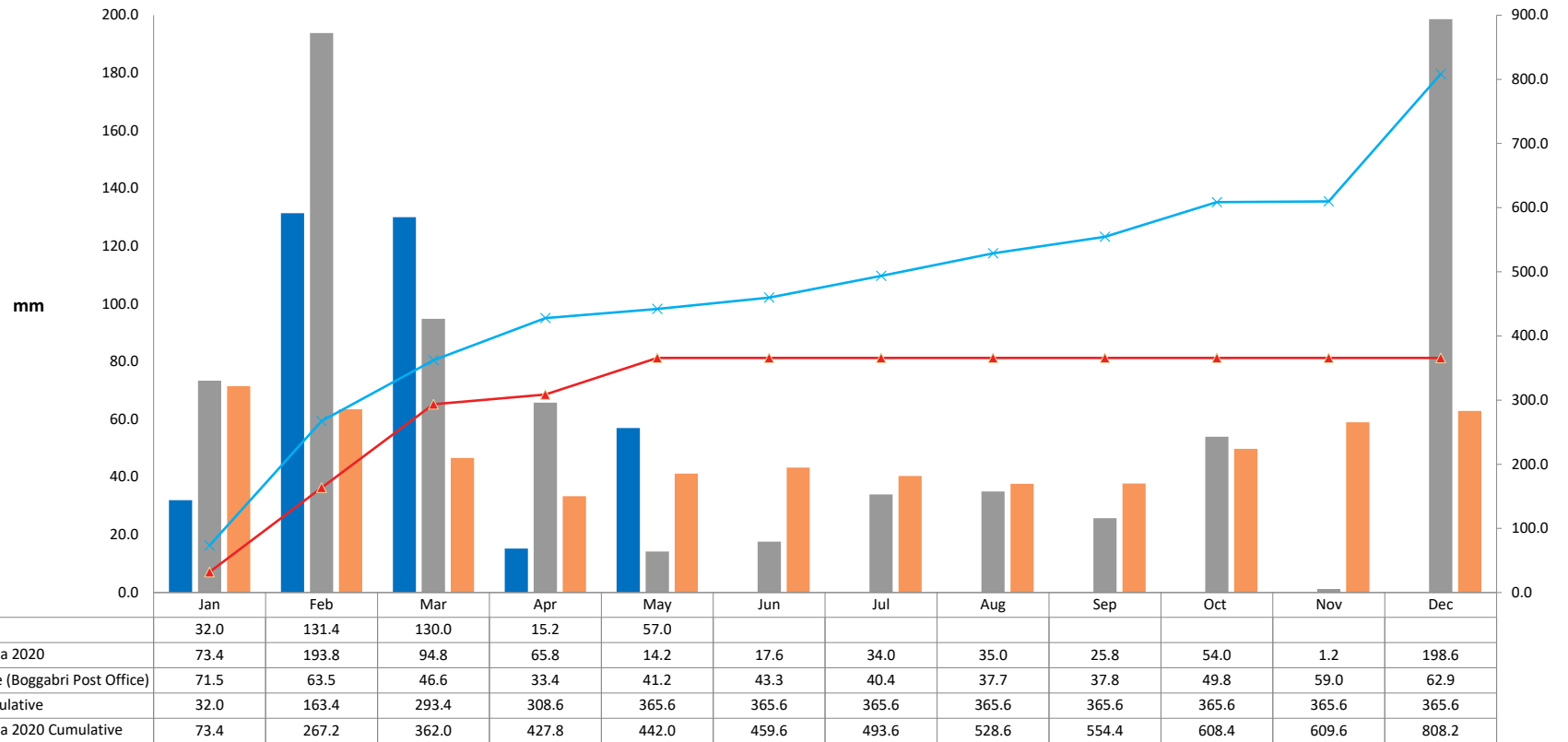
# Groundwater Monitoring



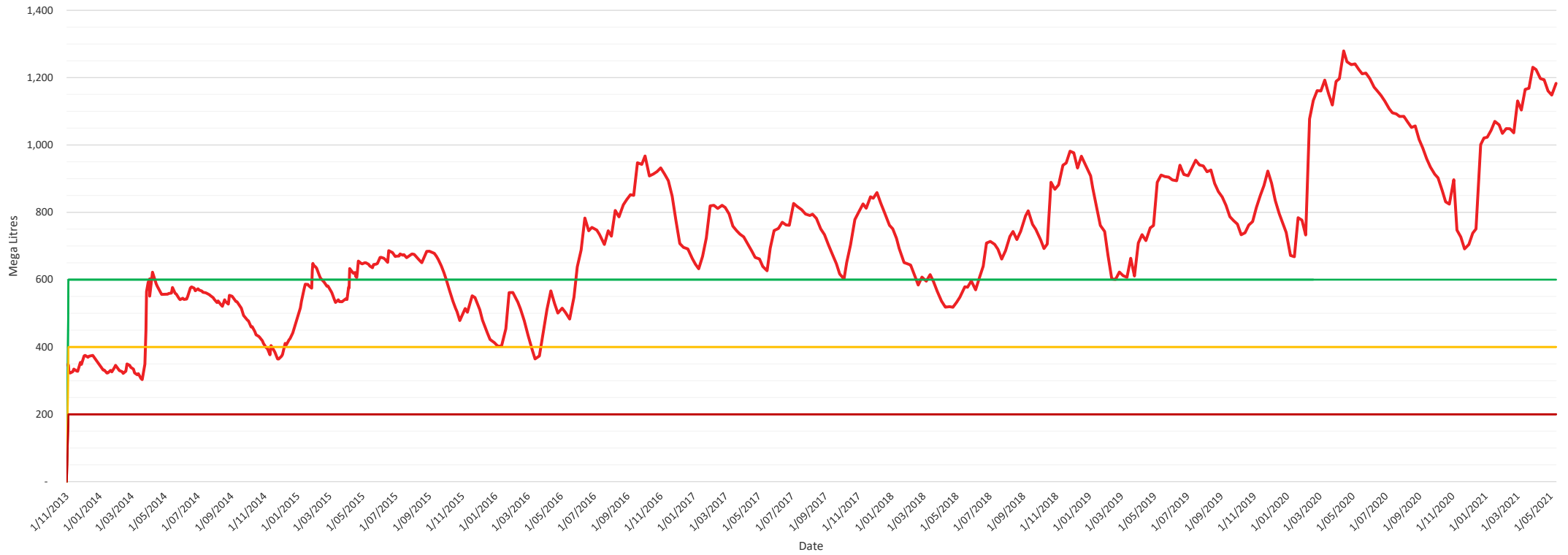
# Groundwater Monitoring



### YTD Rainfall 2021



### Site Water Storage



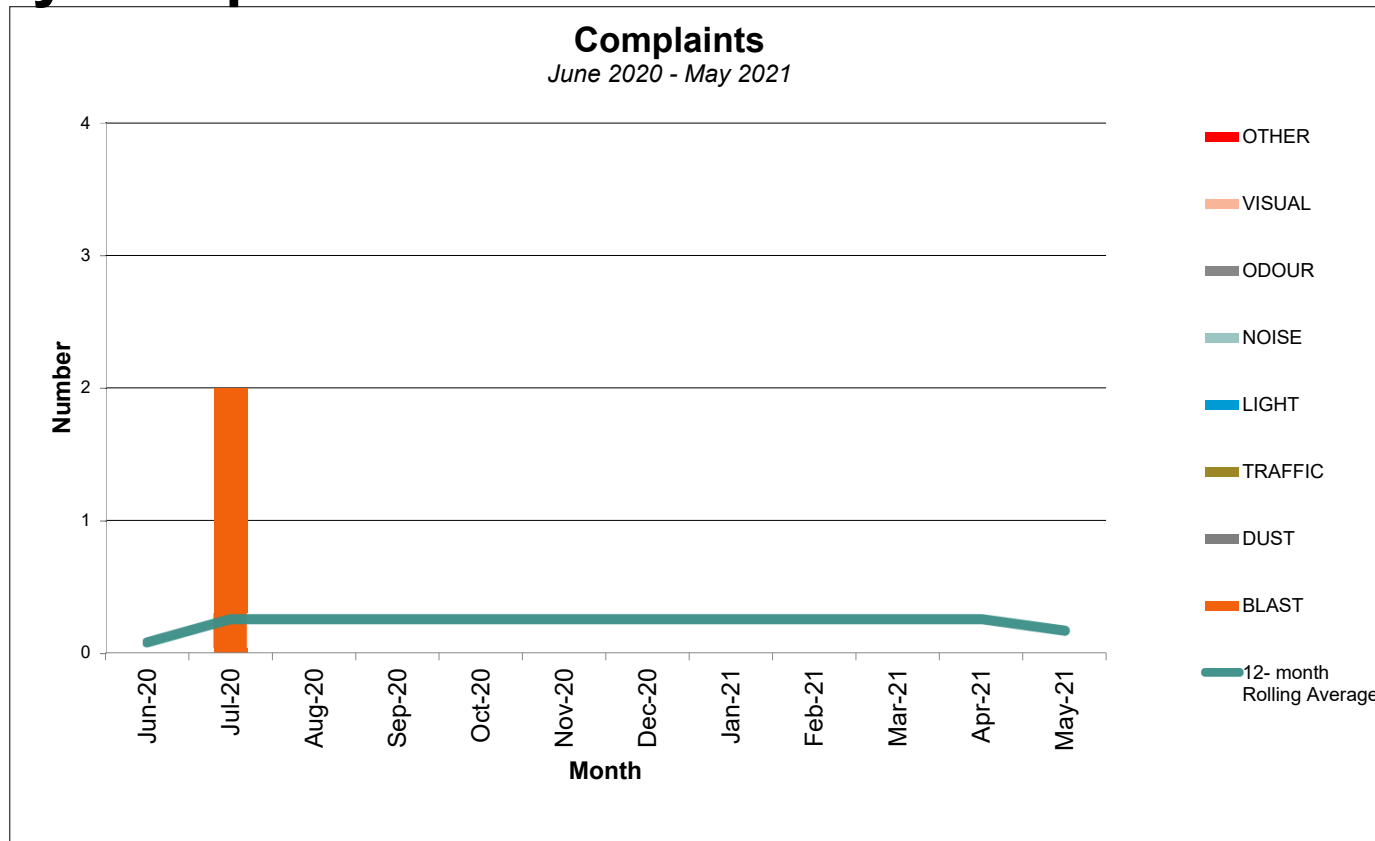


## Bore extraction since previous meeting

BCO has extracted 99.9 ML from its alluvium bores since the 18/2/2021.



# Community Complaints







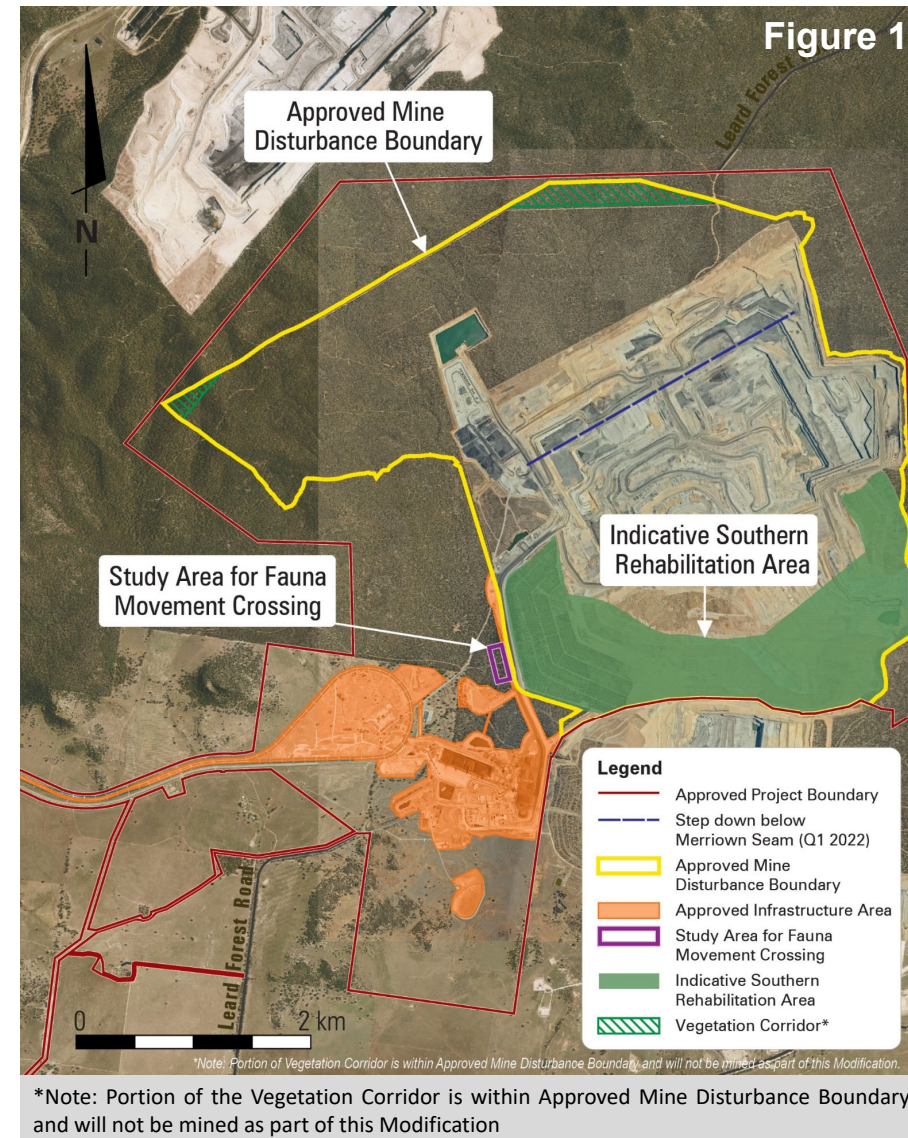
## General Business





## Boggabri Coal Mine proposed Modification

- BCOPL is seeking to modify the existing Project Approval ( SSD 09\_0182) via an application under Section 4.55 of the *Environmental Planning and Assessment Act 1979*.
- A conceptual layout of the Modification is shown on **Figure 1** and comprises the following:
  - Increasing the approved maximum depth of mining down to the Templemore Coal Seam.
  - Recover an additional 61.6 Million tonnes (ROM) coal resource within the currently approved Mine Disturbance Boundary.
    - Excludes the two green hashed areas that are in the Vegetated Corridor.
  - Extend mine life by six years to 2039.
  - Construct a specifically designed fauna movement crossing across the existing haul road between the Southern Rehabilitation Area and the western side of the regional biodiversity corridor.



## What is changing due to the proposed Modification?

Mine Component	Current Approval under SSD 09_0182	Proposed operations as part of MOD8
Approved Mine Life	Mining operations until Dec. 2033	CHANGED PROPOSED Six (6) year extension to 2039
Project Disturbance	2047 Ha	NO CHANGE PROPOSED TO APPROVED DISTURBANCE BOUNDARY. CHANGED PROPOSED due to Fauna Movement Crossing (approx. 1.1Ha direct disturbance)
Annual Production	Up to 8.6 Mtpa ROM coal	CHANGED PROPOSED ROM 8.6 Mtpa average production with maximum proposed at 9.1 Mtpa
Coal Resources	Target Coal seams are from Herndale to Merriown Seam	CHANGED PROPOSED 8 additional coal seam to be targeted below Merriown down to (& incl) Templemore seam.
FTEs	750 FTE within recently update SIMP (Oct. 2020)	CHANGED PROPOSED Peak of 770 FTE.
Rehabilitation and final Landform objectives	NO CHANGE PROPOSED	
Operational Hours	NO CHANGE PROPOSED	
Water Management System	NO CHANGE PROPOSED	
Infrastructure	NO CHANGE PROPOSED	
Site access and roads	NO CHANGE PROPOSED	
Coal Transport	NO CHANGE PROPOSED	



## What's happened since last CCC meeting

---

### Environmental assessment

- Environmental specialist studies are complete
- Final amendments and review is currently taking place to prepare Modification Report for lodgement – We expect this by early June 2021.
- Public display expected to commence July 2021.

### Engagement

- Regular engagement with Commonwealth in relation to EPBC referral decision
- Pre-lodgement meeting with DPIE complete
- Next round of engagement with service providers and Council to commence.
- MOD8 Newsletter#02 will be distributed to all interested parties before public exhibition of the Modification Report.



## Overview of MOD8 Findings

Environmental Value	Draft findings
Noise and Blasting	No predicted exceedances of intrusive noise criteria, nor the maximum predicted noise levels under SSD 09_0182 for Year 2029 (worst case year modelled). MOD 8 is predicted to comply with the relevant criteria for construction noise, sleep disturbance and road traffic noise. No additional blast impacts are anticipated as a result of MOD 8.
Air Quality	BCM including MOD 8 will continue to comply with the relevant air quality criteria.
Groundwater	Overall, MOD 8 is predicted to result in minor additional groundwater impacts compared to approved operations, including: <ul style="list-style-type: none"> <li>– Increased groundwater inflows predicted, within approved WAL.</li> <li>– Negligible additional drawdown within the alluvium to the south west of BCM (in the area occupied by MIA and CHPP infrastructure)</li> </ul>

## Overview of MOD8 Findings

Environmental Value	Draft findings
Surface Water	<p>Water balance modelling indicates that as a result of increased in groundwater inflows there will be reduced demands on external water supplies (borefield and river)</p> <p>Available WALs will be sufficient to provide the makeup water required for continuation of operations under MOD8.</p>
Biodiversity	<ol style="list-style-type: none"> <li>1. BCOPL to surrender the disturbance area associated with the Dragline Erection pad and walk road approx. 3.27ha. (approved under SSD 09_0182 and compensated for under BCM's Revised Biodiversity Offset Strategy).</li> <li>2. Fauna Movement Crossing has proposed disturbance of up to 1.21 ha. Detailed ecological assessment confirmed area not listed as a threatened ecological community.</li> <li>3. This results in net reduction in disturbance to native vegetation of approximately 2.06 ha. and a corresponding net gain in biodiversity value.</li> </ol>

## Overview of MOD8 Findings

Environmental Value	Draft findings
Aboriginal Cultural Heritage & Historic Heritage	No Aboriginal cultural heritage or historic heritage sites located within the MOD 8 Disturbance Boundary.
Soils, Land & Rehabilitation	<p>The overburden emplacement area (OEA) for MOD 8 will be constructed to a maximum height of 400 m RL.</p> <p>This is 5 m higher than the maximum height of the OEA within the approved Conceptual Final Landform design.</p> <p>The increase in the maximum height is required to incorporate macro-relief elements to the surface of the final landform design.</p> <p>The erosion rates predicted for MOD 8 were low to moderate, in line with the currently approved Conceptual Final Landform.</p>
Traffic & Transport	No traffic impacts are anticipated to the existing road network as a result of the changes proposed by MOD 8

## Overview of MOD8 Findings

Environmental Value	Draft findings
Social	<p>SIA engagement program completed in January and February 2021. Key social impacts and opportunities which identified for MOD 8 include:</p> <ul style="list-style-type: none"> <li>• Ongoing direct and indirect employment benefits, local business opportunities and voluntary contributions.</li> <li>• Continued cumulative social impacts resulting from ongoing operations within the BTM Complex and surrounding industry.</li> <li>• Ongoing concerns in relation to impacts on water resources during mining operations.</li> <li>• Ongoing amenity impacts from BCM for a further six years until end of 2039.</li> </ul>
Additional considerations	<p>Geochemistry Visual amenity Bushfires Hazard and risk.</p>





## MOD8 – What’s Next?

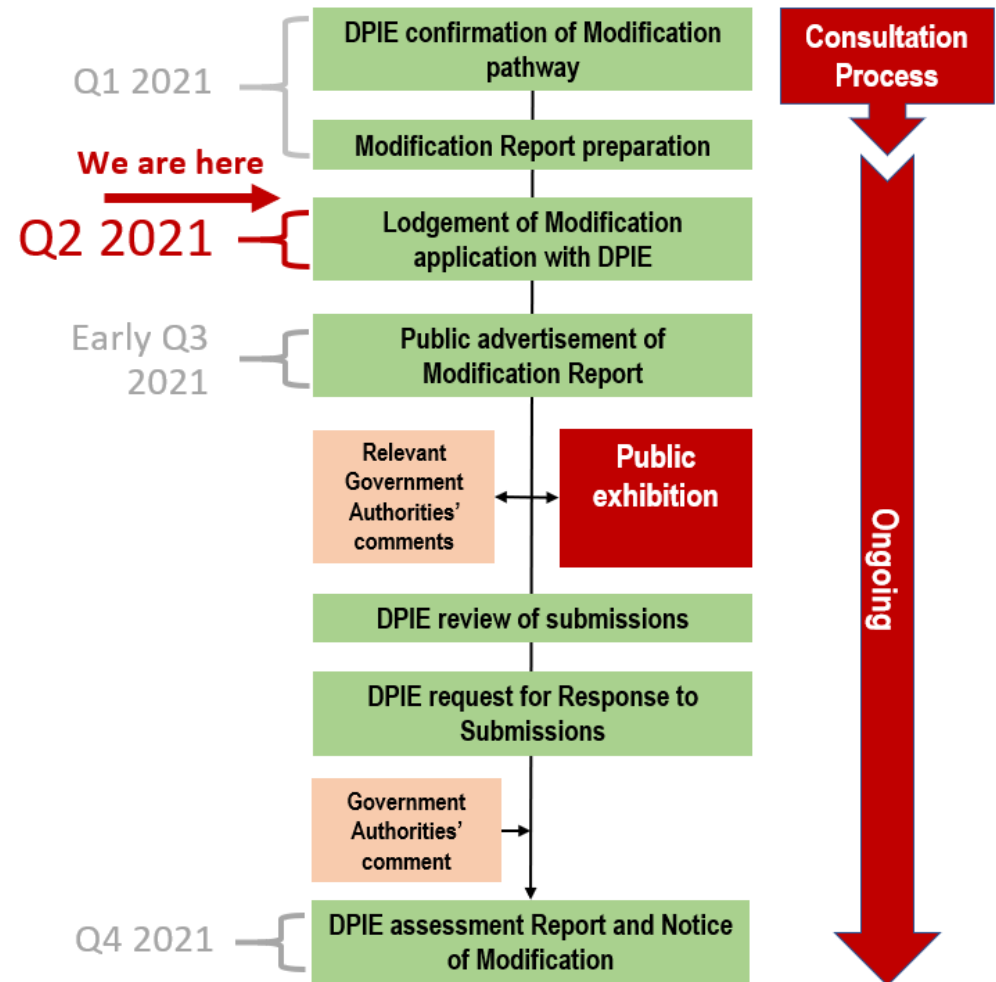
### Work program for Q2 2021:

Lodgement of MOD8 Modification Report to DPIE

Stakeholder engagement will continue for life of project.

Updates will be provided on project webpage:

<https://www.idemitsu.com.au/mining/projects/bco-mod8-project/>





# TREE TROFF® Update

- Frequented by birds, possums and goannas.
- Monitoring program currently in place servicing all 10 TREE TROFF®



Spiny-cheeked Honeyeater

Brushtail Possum

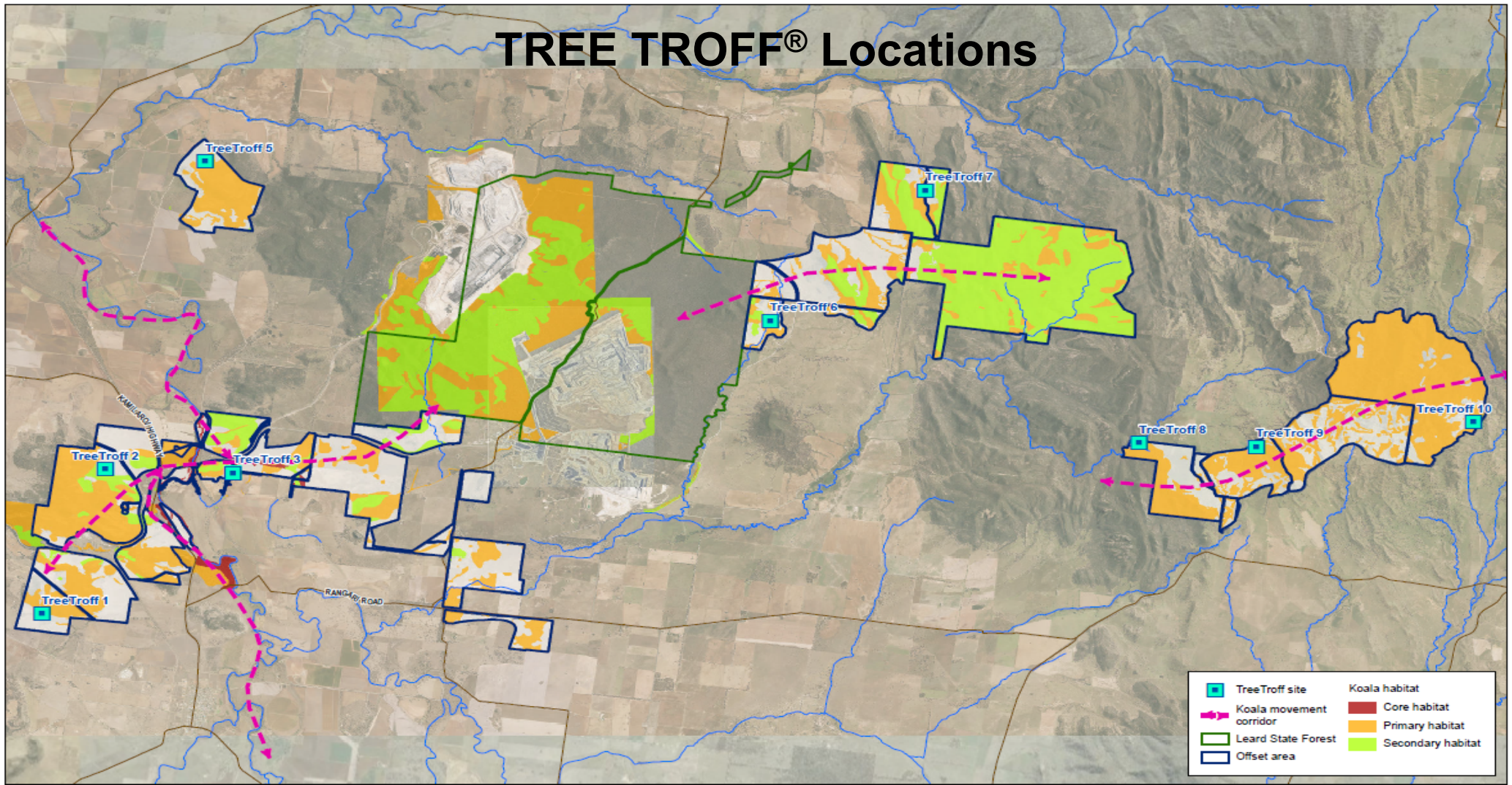
Juvenile Australian King-Parrot

Apostlebird's

Eastern Rosella's



# TREE TROFF® Locations





# Boggabri Coal celebrates International Women's Day

By LAURA HALL-SMITH  
laura.hall-smith@gunnedahtimes.com.au

Idemitsu Boggabri Coal held its inaugural International Women's Day Morning Tea at Coal N Soul Smokehouse in Gunnedah on Friday, March 12 with 30 people attending.

The theme of the day was "women in leadership", celebrating not only women in leadership roles within a business capacity, but mothers leading the future generation.

Boggabri Coal manager Russell Taylor and his wife Nara Batsukh delivered powerful speeches on the day addressing issues such as the inequality women often face in the workplace and how businesses can address change, specifically women within the mining and agriculture sectors.

"Women make up 20 per cent of the total workforce in the mining and agriculture sectors," Mr Taylor said.

"I see no reason why this figure can't be increased."

"This initiative is also an opportunity for education, learn what International Women's Day is all about, acknowledge everybody needs to get onboard and realise that small

ideas can lead to big change," he said.

Ms Batsukh delivered a speech that resonated with every woman in the room, challenging the stereotypical ideas of what constitutes a woman.

"Some people think we love pink, we love shopping for shoes and handbags and hate sport but the reality is we are all different, we all have different interests, body shapes and life experiences, yet we are still all being under the same gender stereotypes," she said.

"We should receive the same opportunities in life regardless of gender."

Mrs Batsukh then told the audience about her and her team's incredible effort in helping change the laws in Mongolia for women in mining, leading the way for women to be able to drive trucks in the mines ten years ago.

"We can create a better world for women, and we can be a beacon for many women around the world," she said.

"The aim is to make the morning tea an annual one, championing not only the strong women of the mining community, but celebrating the strength, determination and resilience of women across the world."



Russell Taylor, Mel Carter, Nara Batsukh, Juliana McArthur and Jacinta Mansion.



Anne-Marie Hawkins, Danielle Newwenhuijs, Cherie Schutz, Abbie Bristol and Don Willcroft.



ABOVE: Lauren Regent, Mariah Colby, Rachael French, Christine Morvok, Kelly Christianson and Nara Batsukh.

LEFT: Cr Colleen Fuller, Jules Bailey, Ivy Tiah, Yee Tan, Gabriela Riveros, Marie Bergeron and Aida Caranton.



Lauren Robertson, Grace Proudfoot and Christie Chapman.



RIGHT: Russell Taylor, Gunnedah Shire councillor Colleen Fuller and Nara Batsukh.

Photos taken by the Gunnedah Times can be ordered by phoning 0474 421 011 or visiting 201 Conadilly Street.



Lisa Davis and Stacey McAllen.



Alan Searle and Russell Taylor.





## Biodiversity Offset Areas

- CCC Biodiversity Offsets Property site visit to be arranged
- April pest management program was rained out, the next program commenced on the 10<sup>th</sup> May and will run for 2 weeks.
- Fencing occurring on Merriendi
- Offset tree planting to commence in winter on Merriendi, Braefield and Nioka North. Approx. 86,000 Tubestocks to be planted

 idemitsu  
Next Meeting

