

OVERVIEW	
Meeting	Community Consultative Committee
Date	29/10/2020
	Time 9.30am
Venue	Boggabri Golf Club
Chairperson	David Ross
Attendees	Tim McDermott (TM), Hamish Russell (HR), David Ross (DR) Cath Collyer (CC), Ros Druce (RD), Robert Kneale (RK), Richard Gilham (RG), Geoff Eather (GE), Peter Forbes (PF), Pat Murphy (PM)
Apologies	Mitchum Neave (MN), Russell Taylor (RT)
Next Meeting	18 th February 2021

ITEM	AGENDA
1	Apologies
2	Declaration of Pecuniary or other Interests
3	Confirmation of previous minutes
4	Business arising from previous minutes
5	Correspondence
6	Company reports and overview
7	General business/questions
8	Next Meeting

DISCUSSION ITEMS
<p>1. Apologies: See above.</p>
<p>2. Declarations of Pecuniary Interests: DR – Declared he is paid a fee for his chairing services. RG – Declared that his property is located in the zone of affectation.</p>
<p>3. Acceptance of previous minutes: Endorsed.</p>
<p>4. Business from previous minutes: DR – Welcomes and thanks PM for joining the BCOP CCC. A discussion was then held about representation and if there was a necessity to have an environmental group represented. HR – Are there any timeframes around when we can advertise for CCC members? DR – No, BCOP has advertised at different times in the past with varying degrees of success. To get 3 applications in the recent campaign was great! HR – Also extends welcome to PM.</p> <p><u>Map of approval boundaries and progress update (Slide 4)</u> HR – Explained map and production statistics. PM – Does a rough calculation and questioned the approx. 7T of overburden moved per tonne of coal mined? What is the overburden to coal ratio in the rest of the industry? PF – The ratio of overburden to coal is called the overburden ratio. BCOP’s overburden ratio is about average in the industry, some mines in the Hunter are much lower but some mines operate at about</p>

DISCUSSION ITEMS

15:1. One advantage of BCOP is that is very good quality coal but is further away from the port than mines in the Hunter Valley.

RG – Is the overburden ratio going to get better or worse as mining progresses?

PF – It will stay about the same for the life of the mine.

CC – Is 6 million tonnes of coal mined so far in 2020 below the approved tonnage?

HR – BCOP can mine 8.6 million tonnes of coal/ year and we are below schedule.

PF – BCOP is behind it's targets for the year – advantage for the business is that the area has good coal. The disadvantage is the long haul to port. Covid-19 and a wetter than average year have not helped.

Review of blast complaints (slide 5)

HR – Explained slide.

RD – Queried the new blast notifications sent to the community. The notification previously used to contain a map of the blast but the new one does not? Would the community email be able to get the map back? **ACTION: Review community blast notifications.**

PF – Due to the blast complaints, a review was conducted into the blast notification process and it was simplified as much as possible. BCOP appreciates the feedback and is going to review the current notifications to ensure the community gets as much information as possible.

CC – It is good to see how the company responded to the blast complaints. Commented how it is good to see corrective action has been taken and had concerns after the last meeting but now these have been addressed.

RD – Comments how surrounding mountains are a factor and makes it hard due to inversions.

PF – Blast conditions are monitored right up until blasting. It is not uncommon for a blast to get postponed at the last minute due to environmental factors.

CC – Would like to see continued communication with the community.

ELF update (Slide 6)

HR – Explained slide.

DR – Is the first ELF advisory committee meeting next week?

HR – Yes, on the 5th November.

RD – Asked if she can have an electronic version of certain slides?

HR – Yes, we can provide slides as requested before minutes and presentation is released.

Exploration update (slide 7)

HR – Explained map and how the drill pads in the forest are 40mx40m.

RD – What rehabilitation will occur once drilling has finished?

HR – They will be bunded and shaped to ensure all water is directed around the pad and reduce erosion and sediment issues.

2021 Tree clearing

HR – Explains map, tree clearing is to occur for mining and exploration in 2021.

RG – Why is BCOP only clearing a small amount this year compared to recent years?

HR – We can only clear what we are going to mine and/or do exploration in for the next 12 months. Last year we did approx. 80ha and the exploration program was much larger.

PF – Every year BCOP tries to keep the balance between clearing too much but also clearing enough for 12 months of mining operations.

DISCUSSION ITEMS
<p>RG – Asks where the mine will progress in the next few years? PF – Explains while talking to the map that the mine’s plan is to swing around to the west into A355, but more drilling information is required from that area to assess it’s profitability. RD – Is BCOP planning to mine into A355? PF – BCOP is planning to convert A355 into a mining lease. It will be a good few years before BCOP starts to mine in A355.</p>
<p>5. Correspondence (slide 9 -10)</p>
<p>HR – Explains Correspondence. RD – When was the SIMP submitted? HR – BCOP submitted the SIMP on the Tuesday 27th October. Feedback from the CCC will be considered for inclusion in the SIMP. RD – Referenced to correspondence from EPA, asks what BCOP does with it’s end of life tyres? HR – We have a process to dispose of end of life tyres in pit. It is done to a high standard. RD – Do you have a licence to dispose of heavy vehicle tyres in pit? HR – We have the concurrence of the EPA and DPIE. HR – Explains correspondence between BCOP & Narrabri Shire Council surrounding the annual gravel share program. Explains brief recent history of the gravel share program. RG – Can the public access some of the gravel for community projects? HR – Explains how BCOP must be careful about exporting gravel offsite. BCOP would have to make sure it is an activity that is allowed for in its approval and management plans. PF – If anyone is interested, they are encouraged to write a letter requesting gravel to the mine.</p>
<p>6. Company Reports & Reviews:</p>
<p><u>Noise monitoring (Slide 12-15)</u> HR – Shows slide and monitoring results. RD – Asked if all the noise limits are the same for all mines? PF – Explains how all mines have noise limits, but they are different based on many factors. <u>Air quality monitoring. (Slide 16-19)</u> Results presented, no issues. <u>Groundwater monitoring (Slide 21-25)</u> HR – Explains slide. RD – Are there groundwater monitoring bores on all the offset properties? HR – There are numerous monitoring bores on offset properties. RD – How many offset properties and bores does BCOP own? PF – Lots, will let you know. RD – Explains concerns about groundwater in broader area, not just around the mine. PF – The locations of monitors was decided by experts who chose areas which were most likely to be affected by mining. RD – ACTION: BCOP to provide a list of number of offsets and groundwater monitoring bores. HR – Explains groundwater modelling slide.</p>

DISCUSSION ITEMS

RD – Will the groundwater model for the BTM complex be complete by the end of the year?
 HR – There have been some recent issues outside of BCOP's control.
 DR – Has the BTM groundwater model been discussed with DPIE?
 HR – Yes there has been lots of consultation with DPIE and the experts.
 DR – How long will it take to get the groundwater model back once it is complete?
 HR – Hopefully straight away as there has been significant review.
 PM – Explains how earlier in the presentation in the 'correspondence' section the Groundwater model was mentioned. Is the BTM groundwater model to measure the cumulative impacts that the mines are having?
 HR – The BTM are doing the groundwater model together to assess the cumulative impact.
 PM – Is there any talk of Narrabri Underground mine and/or Vickery Coal mine joining the BTM?
 HR – No there is nothing yet, BCOP has not received direction to collaborate with Narrabri Underground or Vickery.
 RD – How large is the Zone of influence that the Groundwater model extends to?
 PM – How far away from the BTM is there zero impact?
 HR – The BTM groundwater model will show a zone of influence.

Rainfall (Slide 26)

PF – Explains how BCOP has had more rain so far in 2020 than in 2018 & 2019 combined.

Water storage (Slide 27)

HR – Approx. 800ML currently stored onsite.
 RD – How much have you been importing from the bores recently?
 HR – Around 1-2ML/day. Will report the figures.
 RD – **ACTION: How much water was imported from the bores since previous meeting?**

Water Allocations (Slide 28)

HR – Explains slide.
 PM – Are these the allocations from BCOP's drawdown?
 HR – No, these are the allocations for BCOP's production bores at Cooboobindi and Victoria Park.

Complaints

Nil Complaints.

7. General Business

MOD 8 (slide 32)

HR – Refers to MO8 slide and explains how BCOP is in the process of preparing an 8th modification to its project approval. The plan is to mine deeper to the Templemore seam and extend the mine life. A fauna crossing over the current haul road is also being planned.
 RG – How will the fauna crossing work?
 HR – Will be an overpass, design not finalised yet.
 HR – Further explains MOD 8, BCOP will apply to increase the workforce to reflect actual numbers. The production rate of 8.6Mtba will not be affected due to going deeper. The modification will also aim to extend the mine life til 2039.
 RD – Can BCOP mine into the 500m wildlife corridor?
 HR – BCOP's project approval currently precludes access to the 500m corridor.

DISCUSSION ITEMS

HR – Modification 8 will also have an adjustment in the final landform due to the additional overburden that will be dug up by going deeper to the Templemore seam. Despite this, the intensity of mining will stay the same.

RD – What will happen to the final landform?

PF – Explains that the final landform will be “fuller” than before. Also explains that modification 8 will be consulted to the CCC and they will receive more information about it.

CC – Will details about the final landform rehab be considered?

PF – Yes, MOD 8 is a heads up for now and there will be a lot more consultation in the future.

DR – When will modification 8 occur?

PF – The planning is currently occurring, modification to be lodged in 2021.

TreeTroff (slide 33)

HR explains slide.

Social Impact Management Plan update (slide 34)

HR – Explains slide, SIMP reviewed and submitted.

Found here on website: <https://www.idemitsu.com.au/mining/wp-content/uploads/2016/02/BCOP-DRAFT-2020-SIMP-FOR-CONSULTATION.pdf>

PM – Thanked BCOP for making their employee numbers public.

Offset areas (slide 36)

HR – Explained slide, planning for a CCC offsets tour next year after summer and there is potential for an ecologist to support the visit.

CC – Agrees that early next year would be a good time in isolation of a CCC meeting.

PF – Explains how offset tours can be challenging due to the distance between them, will be a half day tour.

RD – Are BCOP engaged in selling offset properties?

PF – No, BCOP is leasing properties out through an agent. Previously the management was conducted in house but now will be done externally with one focal point. Will make the tenants on offset properties easier to manage.

End of Presentation – General Business

PF – Explained that advertisements have been put out for positions on the ELF advisory committee.

CC – States that she has joined and there are some good applicants.

HR – BCOP will try and make appropriate candidates aware of the opportunity to get involved.

CC – Was really impressed about the follow up from last meeting.

RD – Had few questions as direct quotes for BCOP to answer:

Has Boggabri Coal ever been contacted in the past by the Hunter Gas Pipeline company?

Does Boggabri Coal hold any concerns about the Hunter Gas pipeline, and the proposed route?

How much land would the existing route for the Hunter Gas Pipeline impact if any, of Boggabri Coal's offset properties? Which properties would the pipeline route pass through or next too?

ACTION: Respond to questions regarding the Hunter Gas Pipeline

RD also explains that MN was concerned about the Hunter Gas Pipeline. Explains how if compulsory acquisition is involved then people need to be made aware about it.

DISCUSSION ITEMS
<p>DR – Advised that he and CC are no longer involved in the Namoi Regional Air Quality Advisory Committee, encourages members to apply if they are keen. PF – BCOP has been notified of this and are looking into having a representative. CC – Explains how she was informed that the Namoi Regional Air Quality advisory committee would be advertising for members.</p> <p>DR – There will be a reflection held at the next meeting to look back on the CCC in 2020. Also explains why the Joint BTM CCC was cancelled due to Covid-19 restrictions. The next meeting will hopefully occur in May 2021. The mines would hopefully prepare a few slides and ask the community any questions.</p>
<p>8. Next meetings</p> <p>PF – Explains that he is retiring from BCOP, explains how the company is still keen to keep engaging the CCC. RD, PM, DR, CC & RG – All thank PF for his service to the CCC and the Boggabri community.</p> <p>DR – Thanks everyone for their efforts during a challenging 2020.</p> <p>Next Meeting: Thursday 18th February.</p> <p>Meeting close 11:24am.</p>

Actioned against	Action to be done
BCOP	Respond to questions regarding the Hunter Gas Pipeline: <ul style="list-style-type: none"> - <i>Has Boggabri Coal ever been contacted in the past by the Hunter Gas Pipeline company?</i> - <i>Does Boggabri Coal hold any concerns about the Hunter Gas pipeline, and the proposed route?</i> - <i>How much land would the existing route for the Hunter Gas Pipeline impact if any, of Boggabri Coal's offset properties? Which properties would the pipeline route pass through or next too?</i>
BCOP	How much water has been imported to site from the borefield since the August CCC meeting?
BCOP	Provide a list of all offset properties and monitoring bores.
BCOP	Review community blast notifications.



CCC Meeting October 2020

29th October 2020



1



Agenda

October 2020



- Confirmation of record keeping
- Apologies
- Declaration of pecuniary or other interests
- Confirmation of minutes
- Business arising from previous minutes
- Correspondence
- Company reports and overview
- General business
- Next meeting



2

2



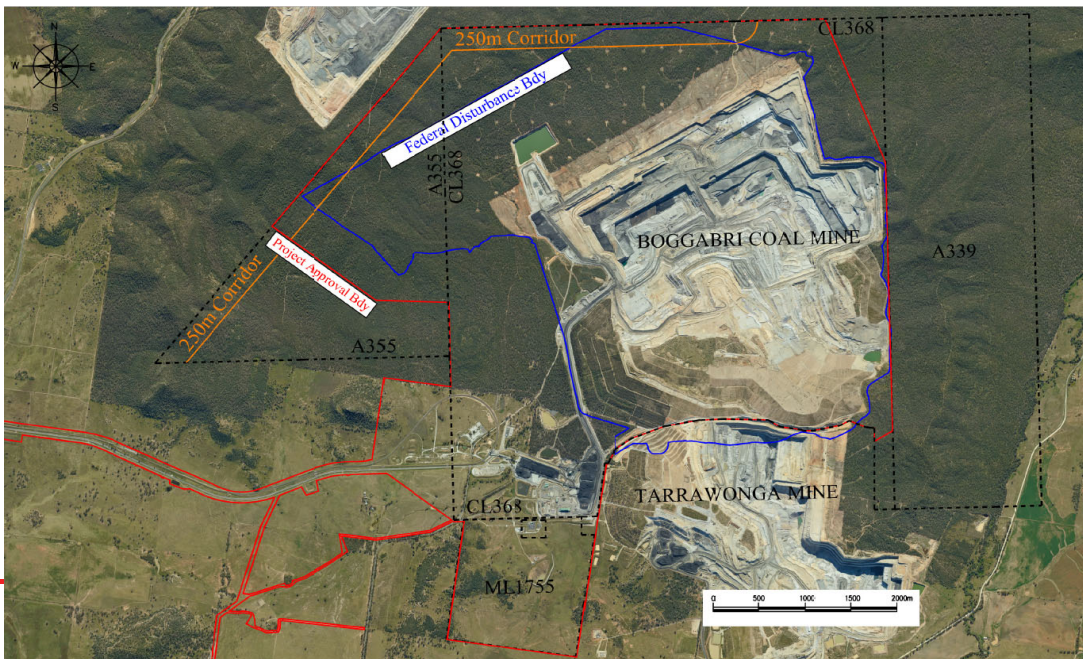
Business Arising from previous minutes

Actioned Against	Action to be done
BCOP	Provide a map with all current approval boundaries
BCOP	Provide a table of BCOP's noise limits
BCOP	Provide CCC with key points once review is complete of blasting occurring on the 24 th & 31 st July
BCOP	Arrange an "offsets tour" for the CCC



3

Map of all current approval boundaries & mine progress update



2020 Statistics so far...

Total Overburden moved:
46,088,784 T

Total Coal Mined:
5,990,110 T

Total Coal Railed:
5,042,876 T

4



Review of blast complaints from July 2020

Findings:

- Following 24/7's blast, prevailing meteorological conditions caused a dust cloud to travel significant distance eliciting complaint from several residents,
- Such circumstances hadn't been encountered previously, and were not considered likely to occur.

Corrective Actions:

- Procure improved dust dispersion modelling technology,
- Evaluating NoX monitoring equipment,
- Develop risk assessment process accommodating NoX monitoring,
- Subject approved risk assessment process to change management process,
- Include contact details of interested individuals in the blast notification process.



Boggabri Early Learning Facility

Construction is progressing well and should be operational 1st Quarter of 2021 subject to operator approvals.

Advertised for members for a community advisory committee. First meeting to be held on the 5th of November.



SEEKING EXPRESSIONS OF INTEREST FOR THE APPOINTMENT OF COMMUNITY MEMBERS TO JOIN THE BOGGABRI EARLY LEARNING FACILITY ADVISORY COMMITTEE

We are currently calling for community representatives to join the Boggabri Early Learning Facility Advisory Committee.

Committee members provide local contact points for the community regarding the facility, provide a means for information distribution regarding the facility and advise the facility's management team on relevant community issues or concerns. Your role as an advisory committee member is voluntary.

Selection criteria: You will be expected to contribute constructively to committee discussions, live in the area or have a demonstrated involvement in local groups or activities, attend monthly meetings in the lead up to the facility beginning operations which will be reviewed once operational and communicate information about the facility between the committee and the broader community.

If you would like to apply, contact Prue Jamieson by phone on 6792 6566 or email nurruby@bigpond.com

Applications must be lodged by the 21st October 2020.

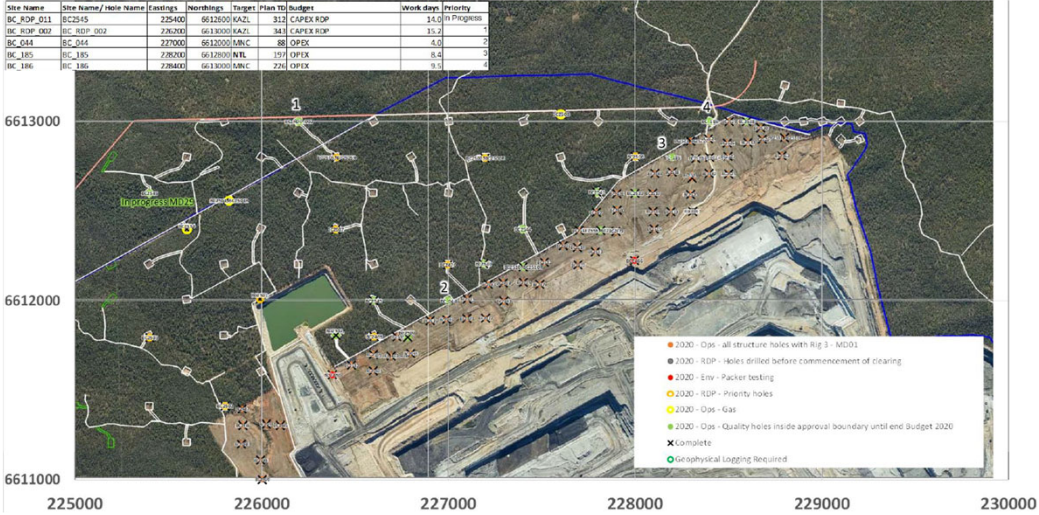
The first meeting will be held Thursday 5th November 2020.



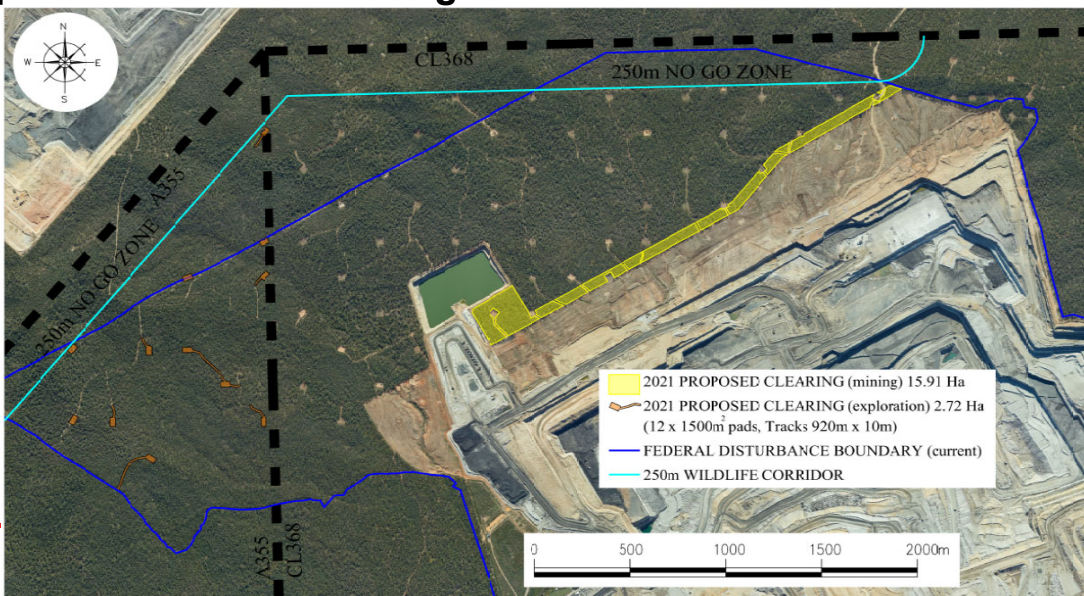


Exploration Update

Site Name	Site Name / Hole Name	Eastings	Northings	Target	Plan To	Budget	Work days	Priority
BC_RDP_011	BC2545	225400	6612000	KAZ	311	CAPEX RDP	14.0	In Progress
BC_RDP_002	BC_RDP_002	226200	6612000	KAZ	341	CAPEX RDP	15.2	
BC_044	BC_044	227000	6612000	LNC	88	OPEX	4.0	2
BC_185	BC_185	228100	6612000	NRL	121	OPEX	8.4	3
BC_186	BC_186	228400	6612000	LNC	224	OPEX	9.5	4



Proposed 2021 Tree Clearing





Correspondence

NSW Department of Planning, Industry & Environment

- Approval for SLR to conduct the Independent Environmental Audit and extension to due date
- Approval for Umwelt to undertake biodiversity elements of Independent Environmental Audit
- BTM Groundwater Model consultation
- Letter of appointment of BCO CCC members
- Submission of Social Impact Management Plan

Department of Agriculture, Water & Environment

- BCOP directed to conduct an audit of EPBC approval conditions. Scheduled for completion by year end. Approval of Umwelt to conduct audit



9

9



Correspondence

Environment Protection Authority (EPA)

- Monthly noise reports
- Notice to provide information and /or records received from NSW EPA in relation to the disposal of end of life HV tyres

Forestry Corporation of NSW

- Continuing negotiations about access/compensation agreements

Water NSW

- Water allocations
- Updated licences including new conditions

Narrabri Shire Council

- Requested gravel in accordance with VPA



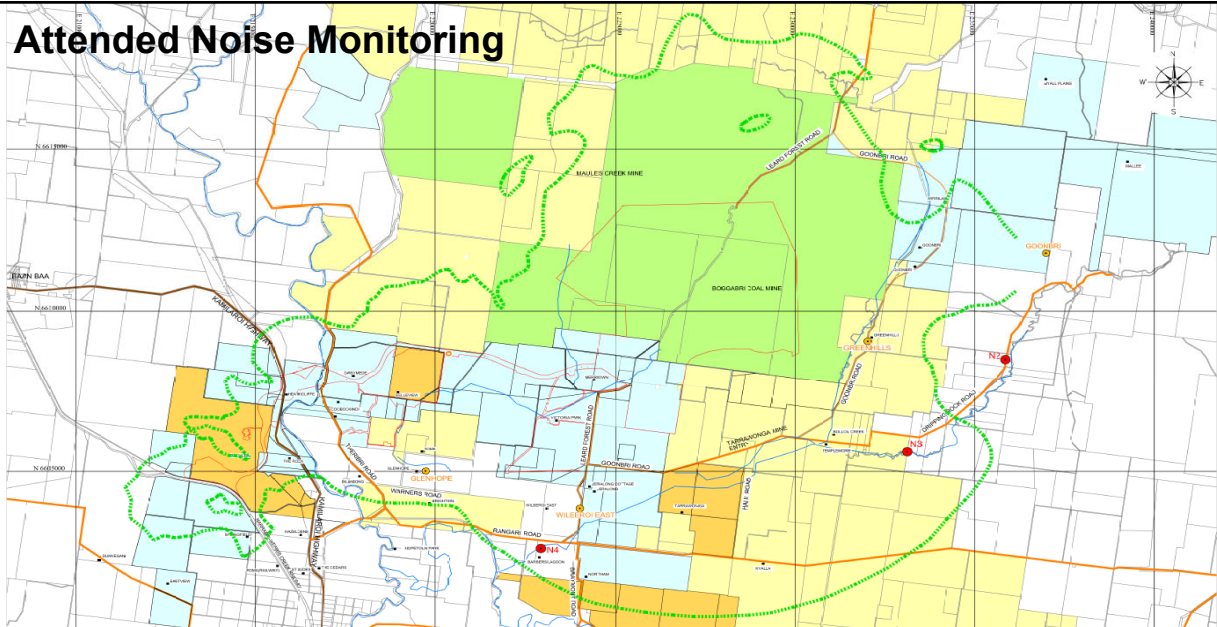
10

10

idemitsu
Company Reports and Overview



Attended Noise Monitoring



<table border="1"> <thead> <tr> <th>REV</th> <th>REVISIONS</th> <th>DATE</th> </tr> </thead> <tbody> <tr> <td> </td> <td> </td> <td> </td> </tr> </tbody> </table>	REV	REVISIONS	DATE				<p>General Legend</p> <ul style="list-style-type: none"> ● Noise Monitor (calculated) ○ Noise Monitor (Real Time) — Max 54dB(A) noise contour ■ Residence / Property name — Creek / River — Road — Main Road / Highway 	<p>QUALITY RECORD</p> <table border="1"> <thead> <tr> <th>REVISION</th> <th>NAME</th> <th>SIGNATURE</th> <th>DATE</th> </tr> </thead> <tbody> <tr> <td> </td> <td> </td> <td> </td> <td> </td> </tr> </tbody> </table> <p>DRAWN CHECKED BY:</p> <ul style="list-style-type: none"> Property Ownership Boggabri Coal Boggabri Coal & Wharfedale Coal Mining Wharfedale Coal State Forest Boggabri Coal Project Approval Boundary 	REVISION	NAME	SIGNATURE	DATE					<p>SCALE See Grid (500m)</p> <p>FILE REF: Site: Boggabri Coal Mine - 10738.dwg PLOT FILE: Site: Boggabri Coal Mine - 10738.dwg</p> <p>ORIG. FILE SIZE: A3</p>	<p>Boggabri Coal Operations</p> <p>Noise Monitoring Locations</p> <table border="1"> <thead> <tr> <th>REV</th> <th>DATE</th> <th>BY</th> <th>CHKD</th> </tr> </thead> <tbody> <tr> <td> </td> <td> </td> <td> </td> <td> </td> </tr> </tbody> </table> <p>DRAWING NO: 140726</p>	REV	DATE	BY	CHKD				
REV	REVISIONS	DATE																								
REVISION	NAME	SIGNATURE	DATE																							
REV	DATE	BY	CHKD																							



Attended Noise Monitoring

Monthly monitoring conducted in July, August & September 2020.

Night-time monitoring carried out in accordance with requirements of the EPL and Australian Standards.

There were no exceedances of EPL or Project Approval criteria during the monitoring.



13

13



Attended Noise Monitoring

Attended Noise monitoring location	LAeq, 15min Impact Assessment Criterion	Oct - 19	Nov- 19	Dec- 19	Jan-20	Feb-20	Mar-20	Apr-20	May- 20	June- 20	July- 20	Aug - 20	Sept - 20
Sylvania	35	IA	IA	IA	IA	IA	IA	IA	IA	IA	IA	28	IA
Picton	35	IA	IA	IA	IA	IA	IA	<25	IA	IA	28	>25	IA
Barbers Lagoon	35	NM	IA	IA	IA	29	IA	IA	IA	25	IA	IA	27

IA: No site noise was audible at the monitoring location

NM: Some site noise was audible but could not be quantified



14

14



Noise limits – Extract from Noise Management Plan. April 2019

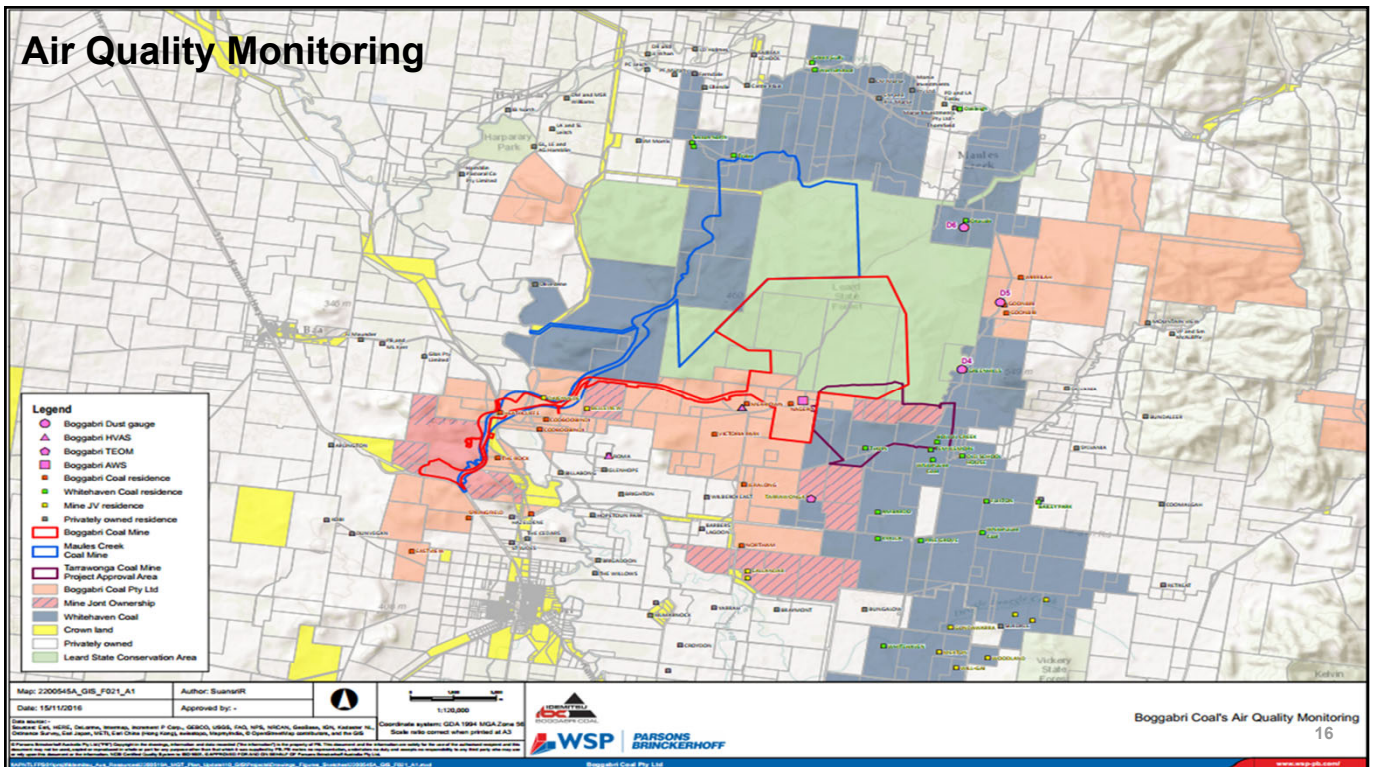
Table 4.2 Noise impact assessment criteria dB(A) – maximum any stage of project life.

Location/Property ID	Noise Impact Assessment Criteria			
	Day L _{Aeq} (15 min)	Evening L _{Aeq} (15 min)	Night L _{Aeq} (15 min)	Night LA1 (1 min)
All privately owned residences	35	35	35	45



15

Air Quality Monitoring

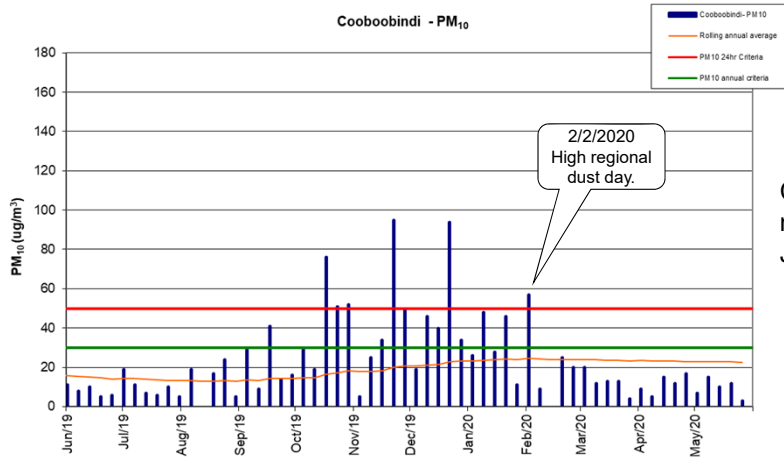


16



Air Quality Monitoring

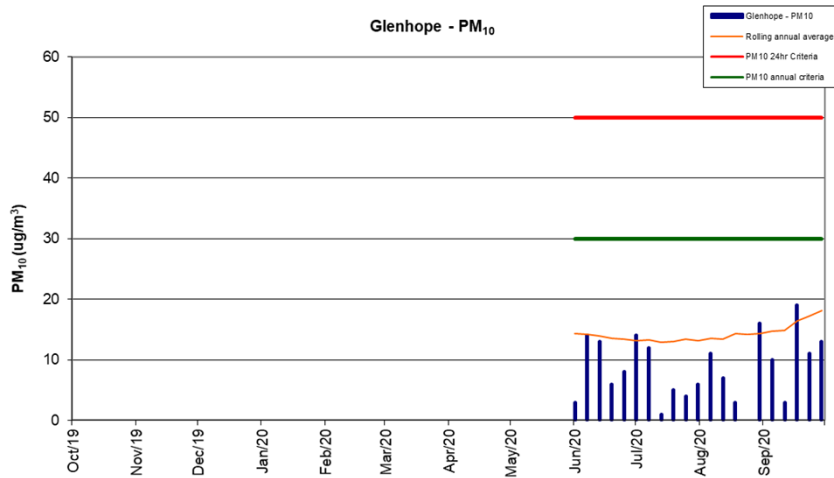
Widespread smoke and dust storms significantly affected air quality levels throughout the State, particularly during the bushfire emergency period from late October 2019.



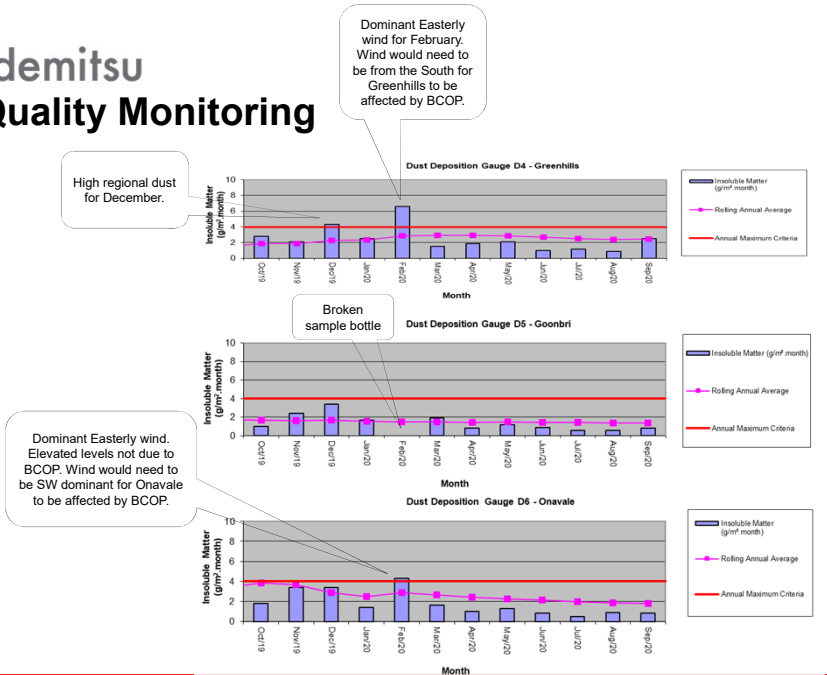
Cooboobindi HVAS moved to Glenhope in June 2020.



Air Quality Monitoring

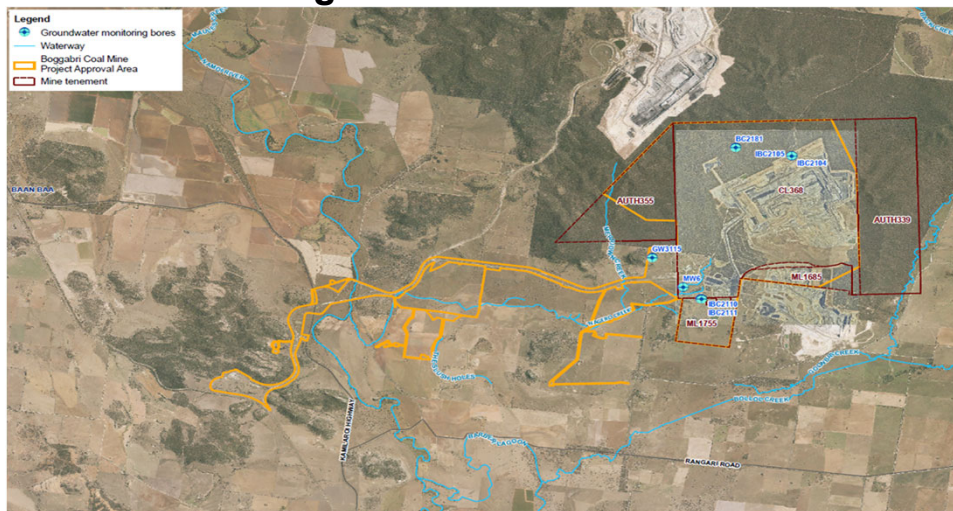


idemitsu Air Quality Monitoring



20

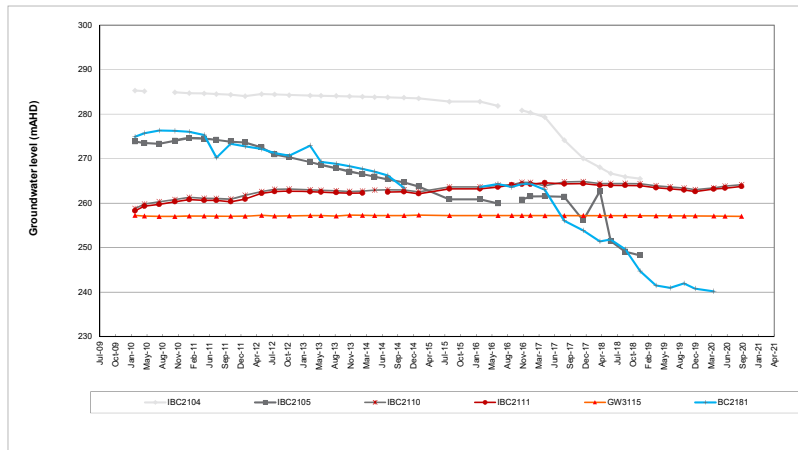
idemitsu Groundwater Monitoring



21



Groundwater monitoring



22

22



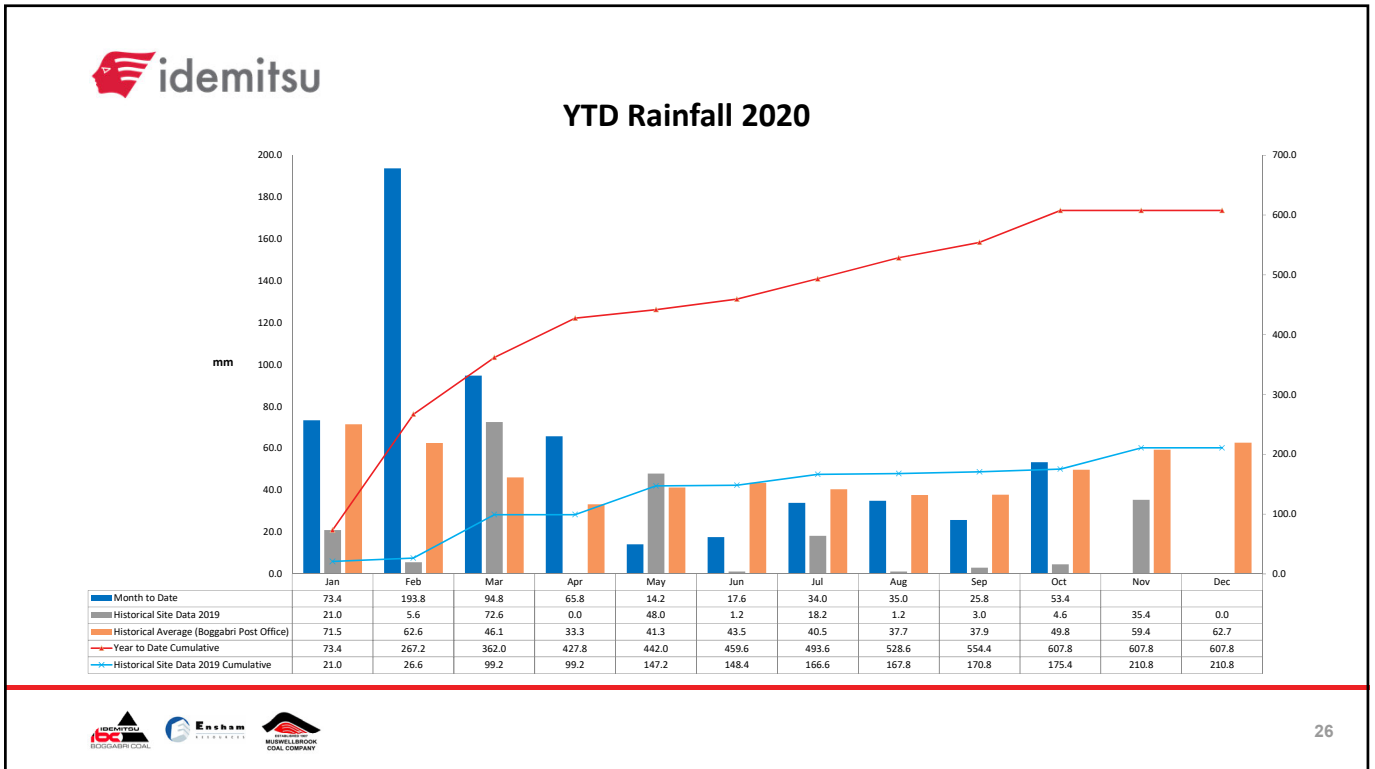
Groundwater modelling

- Groundwater model for BTM complex has been further developed and calibrated.
- Meeting held with NRAR (Natural Resources Access Regulator) in September to discuss calibration and predictions.
- The final report is currently being prepared and expect to submit to NRAR in late November.

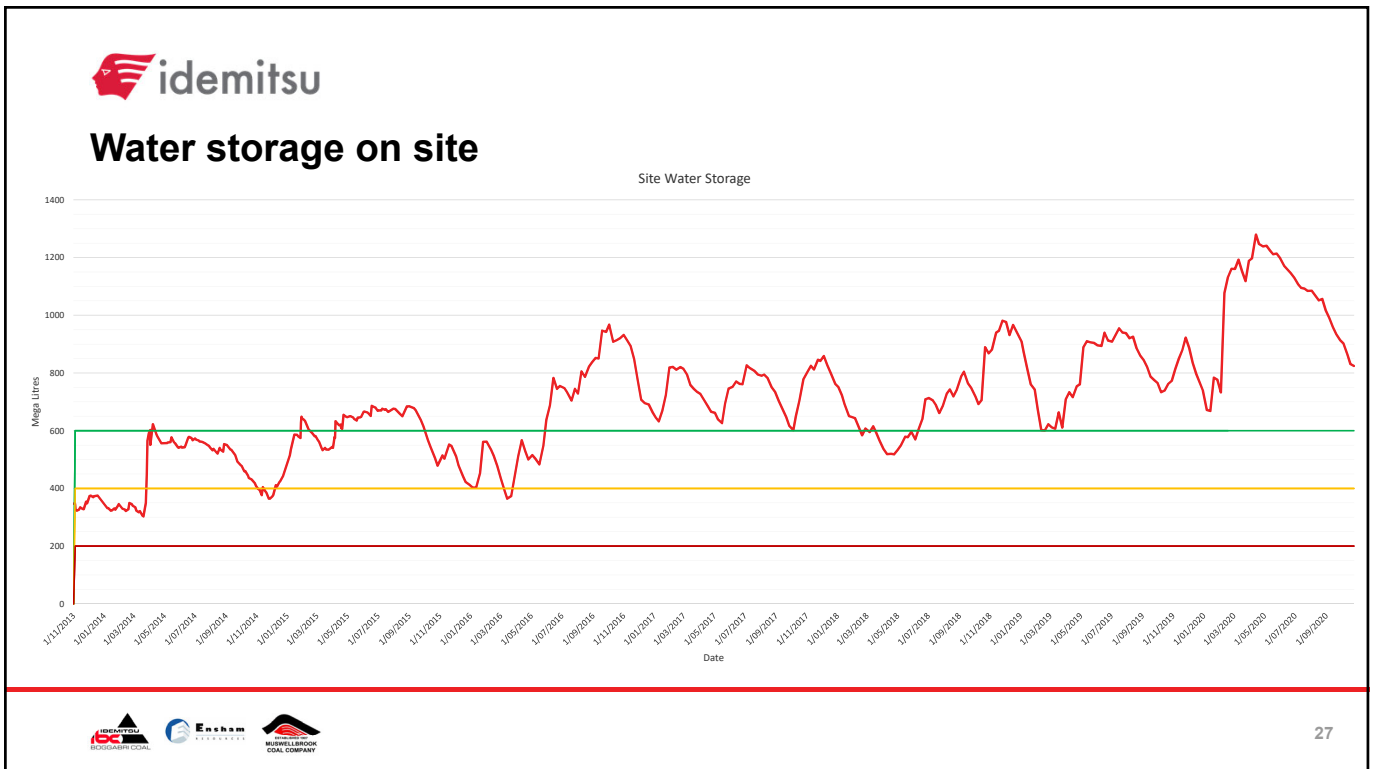


25

25



26



27



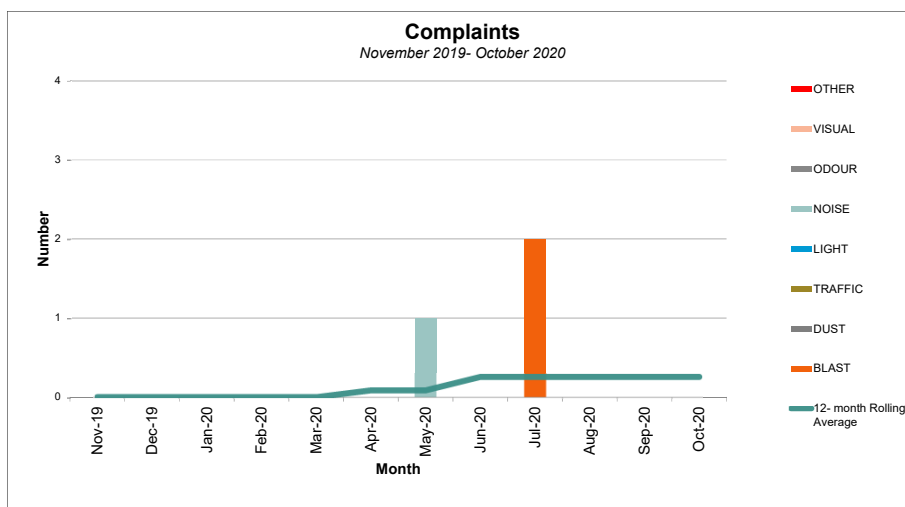
Water Allocation

Water Source	Date	AWD
Gunnedah Oxley Basin MDB Ground Water Source	1-Jul-20	1.0 ML/ share
Lower Namoi Regulated River (General Security)	8-Sep-20	0.042 ML/share
	7-Oct-20	0.014 ML/share
Lower Namoi Regulated River (Supplementary Water)	1-Jul-20	1 ML/share
Upper Namoi Regulated River (General Security)	8-Sep-20	0.5 ML/share
Upper Namoi Zone 11, Maules Creek Groundwater Source	1-Jul-20	1.0 ML/share
Upper Namoi Zone 4, Namoi Valley (Keepit Dam to Gins Leap) Ground Water Source	1-Jul-20	1.0 ML/share



Community Complaints

No complaints in last 3 months





General Business



30



Project Approval Modification 8

- Legend**
- Project Boundary
 - Boggabri Mining Tenements
 - Vegetation Corridor Extension Area
 - Step down below Marrown Seams (April 2022)
 - Approved Mine Disturbance Boundary
 - MOD7 Disturbance Boundary
 - MOD8 Disturbance Boundary
 - Indicative Rehabilitation Area
 - Survey Area



32



TreeTroff

- Minor modifications have been made to original design to improve safety and ease of maintenance
- Frequented by birds
- Installation of the remaining troffs is expected to be completed in November



33

33



Social Impact Management Plan Update

Completed a review of the social impact management plan (SIMP).

Revised SIMP was submitted to the Department of Planning Industry and Environment 27/10/2020.

Changes from the previous version include:

- Boggabri Coal Operation taking over operation of the pit from Downer Mining; and
- The review found that social impacts have remained consistent with previous versions.

It is available on the website.



34

34



Social Impact Management Plan Update

Workforce numbers are approximately 750 people

Locality	BCOP Employee Residency	Locality	One Key Employees (operators and maintainers)	Goldings	Orica	Action Drill and Blast
Boggabri	56	Boggabri	4	12	8	3
Baan Baa	4	Gunnedah	25	42	10	3
Curlewis	5	Narrabri	3	11	2	5
Gunnedah	186	Other NSW	21	88	13	21
Manilla	20	QLD	2	8	4	6
Moore Creek	2	Total	55	161	37	38
Narrabri	42					
Other NSW	82					
QLD	7					
Sommerton	2					
Tamworth	46					
Willala	2					
Total	454					



35

35



Biodiversity Offset Areas

- CCC offsets tour to be conducted
- Contracts for works in the offsets to be awarded imminently
- Weed and pest management
- Handing properties to local real estate agent



36

36



General Business



37

37



Next Meeting

18th February 2021



38

38