

OVERVIEW	
Meeting	Community Consultative Committee
Date	13/08/2020 <b>Time</b> 9.30am
Venue	Boggabri Golf Club
Chairperson	David Ross (via Microsoft Teams)
Attendees	Tim McDermott (TM), Hamish Russell (HR), David Ross (DR) Cath Collyer (CC), Ros Druce (RD) (via telephone), Robert Kneale (RK), Richard Gilham (RG), Geoff Eather (GE), Keren Halliday (KH)
Apologies	Mitchum Neave (MN), Peter Forbes (PF)
Next Meeting	29 <sup>th</sup> October 2020

ITEM	AGENDA
1	Apologies
2	Declaration of Pecuniary or other Interests
3	Confirmation of previous minutes
4	Changes to CCC Membership
5	Business arising from previous minutes
6	Correspondence
7	Company reports and overview
8	General business/questions
9	Next Meeting

DISCUSSION ITEMS
<p><b>1. Apologies:</b> See above.</p>
<p><b>2. Declarations of Pecuniary Interests:</b> DR – Declared he is paid a fee for his chairing services. RG – Declared that his property is located in the zone of affectation.</p>
<p><b>3. Acceptance of previous minutes:</b> Endorsed.</p>
<p><b>4. Business from previous minutes:</b></p> <p><u>Source of “Orica’s” blasting material. (Slide 4)</u> HR – Blasting materials are sourced from Kurri Kurri NSW and Helidon QLD.</p> <p><u>Dam Catchments and Runoff (Slide 5)</u> HR – Explains handout and how clean, dirty and contaminated water is managed.</p> <p>CC – Where did Tarrawonga Coal discharge in February? HR – Referred to a site map and showed the general location. Advised that the breach was away from BCOPs mining areas and did not affect the operation.</p> <p>CC – What is the current use of MW5? Is it for catching runoff from the forest?</p>

## DISCUSSION ITEMS

HR – MW5 is a 2GL transfer dam and is currently at 700ML stored and we built it to maintain the 1GL in airspace we need to maintain at all times. Also used as a storage dam to evacuate the pit.

### Overlapping PEL001 Lease (Slide 6)

HR – Referred to map in presentation. Contrary to prior comments, the PEL001 lease covers around half of the pit and overlaps part of the vegetated corridor. The lease extends south towards Quirindi.

RD – Can I access the full map online?

HR – Yes you can.

RD – On the agreement regarding the overlap, what has been done?

HR – We had no evidence that we had consulted with ‘Santos’ regarding the lease. We can now show evidence of consultation with ‘Santos’.

RD - What happens if PEL001 goes ahead?

HR – Very unlikely that gas exploration drilling would ever be permitted on site. Would be a very difficult process if they did.

RD – Would PEL001 affect the offsets?

HR – They wouldn’t be allowed onto the offsets. Unsure how PEL001 would work near BCOP but seems highly unlikely.

HR – Referring to map, explained how BCOP’s project approval boundary goes into A355 and we are looking at converting the project approval area of A355 (a small section) into a mining lease. Aim to mine deeper down to potentially the Templeton seam. A project approval modification would need to be submitted before this occurs.

CC – What activities does the state approval allow BCOP to conduct in A355?

A discussion then occurred regarding the new lease area that BCOP is applying for a mining lease.

HR – BCOP can conduct exploration activity only, we cannot mine A355 without a mining lease.

### **ACTION – Provide CCC with a mine map of all current boundaries.**

### Houses for Narrabri and Boggabri (Slide 7)

HR – Post the construction of the ELF, BCOP will target the construction of 3 houses per year in Narrabri and Boggabri.

CC – Discusses how Boggabri should be prioritised for house construction.

HR – BCOP will consider prioritising the construction of houses in Boggabri over Narrabri. An assessment would be conducted to see where housing would be more beneficial. The CCC and Narrabri Shire Council would both be consulted to see which location would be most beneficial for the community.

DR – How long will the 3 houses per annum commitment last?

HR – Until all homes noted in BCOP’s Housing Commitment (10 in Boggabri & 20 in Narrabri) are delivered.

### ELF construction (Slide 8)

CC – Noted that good progress has been made on the ELF and is wonderful to see.

HR – Explained that pending good weather, construction should take 5 to 6 months and be operational in the first quarter of 2021.

CC – It will bring many families to Boggabri that would otherwise have to reside in a bigger town. How many houses did the ELF replace?

HR – The ELF replaces approx. 3 houses from Boggabri Coal’s Housing Commitment.

DISCUSSION ITEMS
<p>CC – The ELF is an overcommitment for what is required to build houses in the approval. The ELF will bring far more to the town than the houses will.</p>
<p><b>5. Correspondence (slide 9 -11)</b></p>
<p>HR – Discussed correspondence received.</p> <p><u>EPA risk Assessment</u>            HR – The EPA completed a risk review of BCOP activities and as a result BCOP’s risk level was changed from “moderate” to “low”.            CC – A wonderful result. Great achievement.</p>
<p><b>6. Company Reports &amp; Reviews:</b></p>
<p><u>Noise monitoring</u>            HR – Explained slides 14-16.            CC – What are the noise limits on site?  <b>ACTION – Provide noise limits table.</b>            CC – Have BCOP’s noise limits changed?            HR – No, not for our operation.            CC- Requested details on the noise limits.  <b>HR- ACTION: To provide copy of noise limits to CCC members</b></p> <p><u>Air quality monitoring</u>            HR – Explained recent results on slide 19 &amp; 20. The Cooboobindi monitor has been moved to Glenhope.            CC – How does dust from other neighbouring operations affect BCOP? E.g. From blast events?            HR – Described how the monitoring network has been set up to try and assess as much of our impact as possible. Is a very large monitoring network so is unlikely that individual events would affect averaged weekly/monthly results.</p> <p><u>Groundwater monitoring</u>            HR – Discussed slide 23.            RD – As BCOP progresses further north into the hard rock aquifer, is more water entering the pit?            HR – As the seam’s depressurize, the less water there is in the seams. Most of the water that comes into the pit is from rainfall and/or runoff.            HR – Outlined the groundwater monitoring undertaken in neighbouring bores. Explained that both Victoria Park and Cooboobindi bores have telemeterised metering and SWL monitoring telemeterised. The results shown in slide 25 demonstrates the standing water level of some neighbouring bores has started to recover due to recent rain.</p> <p><u>Water storage on site</u>            HR – Explained slide 26.</p> <p><u>YTD Rainfall (Slide 27)</u>            No comments.</p> <p><u>Noise complaint (Slide 28)</u></p>

## DISCUSSION ITEMS

HR – Landholder was concerned about the “hum” of mine and mining in general. The property of the complainant is located about 8km east of BCOP and relatively protected to the east due to the natural ridgeline and Mt Goonbri.

### Blast Complaints

HR – Reported that a blast complaint was received via the ‘1800boggabri’ community hotline from a resident in the Maules Creek area about blast fume and odour. Several complaints were also made directly to the EPA. BCOP representatives attempted to organise a face-to-face meeting with the complainant but they declined the invitation. Boggabri Coal’s General Manger tried to contact the complainant for more detail, but the invitation was declined. HR showed the location where the complaint had been received.

RD – Read out a letter and requested it be noted in the minutes:

*"On the 24th July 2020 there was a blast that produced a NOx plume that migrated off site. These fumes impacted members of the local Maules Creek community. Why was there no notification by the mine when this blast plume migrated off site in the direction of known residents to the North?"*

RD – Stated that she had noticed a cloud coming from the east at 5pm on the 24<sup>th</sup> July and believed there was an inversion that had contributed to the situation.

HR – Advised that we had reviewed the blast and that it did not contain any visible fume. There were experienced blast engineers observing the blast and they reported that they did not see any ‘visible’ fume. BCOP did not have concerns about visible fume in the blast and were surprised when the complaint was received. The complainant also asked how long “the cloud” would last for, assured it would only be for a short period.

RD – Explained how she was contacted by other community members to see if she could notice any cloud or smell at the time. Explained how she thought the blast was at 4:00, and asked why weren’t land holders contacted.

HR – No local landholders were contacted because there was no visible fume. The blast occurred at 4:15 on Friday 24<sup>th</sup> July. Explained how BCOP found the allegation of NOx exposure concerning and unexpected.

RD – Explained how the evidence of NOx exposure was through smell and headache. Noticed a slow cloud coming from the east.

HR – On the Monday when the circumstances were followed up, BCOP offered to meet with the complainant but they declined the invitation.

RD – Asked if there any other way to monitor NOx from a blast? It is a really concerning community health issue.

HR – We haven’t had an issue for many years. The absence of complaints and incidents in the last few years as well as no major fume events gave the blasting team no reason to contact community members. This is highly concerning to BCOP that these allegations have been made, and we need as much information as possible so this doesn’t happen again. For the complainant to be affected by smell is unusual especially at such a long distance away from the mine.

RD – Explains how she believes the was an inversion which may have attributed.

HR – Advised that the monitoring data showed that an inversion was unlikely at the time of the blast.

DR – Questioned a way forward for community members and the mine to resolve this issue.

RD – Does depressurising the groundwater have any effect on the water content of the blast and therefore the fume?

HR – It may have an affect, is unlikely. There have been no issues with groundwater and fume previously.

## DISCUSSION ITEMS

CC – Questioned whether the EPA camera was still at a local community members house in the area. Mentioned that the camera would have captured the fume event.

RD – Mentions that the Maules Creek Coal Mine blasted at 3:30pm, comments that both mines blasted that day.

HR – **ACTION: To provide CCC with key points once the review is complete.**

RD – Questioned how blasts are monitored to ensure there are no locals exposed to toxic gasses. Stated that notifications must go out to all affected community members.

HR – Advised that we need to understand the issue fully to help avoid this type of situation happening again.

DR – The investigation is important to ensure it does not happen again. DR requested an a short email be sent to CCC once the review is complete.

RD – Can the community members get blast notifications?

HR – Yes will organise. **ACTION: RD to provide contact numbers for HR to include in blast notifications.**

### 31<sup>st</sup> July Blast

HR – Reported that a complaint was made directly to the EPA about a blast on the 31<sup>st</sup> July and had requested to deal directly with the EPA.

DR – Will the EPA let BCOP know about the investigation?

HR – BCOP will notify the CCC about the result once the EPA investigation has been received.

CC – What time do the mines usually blast?

TM – BCOP normally blasts at 11am or 3pm Monday – Saturday.

HR – Discussed slides 28 & 29 outlining the complaint statistics and locations.

### Exploration Map

HR – Explained map on slide 32.

RD – Can you go past the blue line?

HR – Explained that exploration related activities are the only activities inside the Authorisation Area. HR commented that the various approval boundaries and multiple agencies involved makes it challenging to deal with separate regulators.

CC – Comments how obtaining a mining lease is a big process.

### Koalas (Slide 33-37)

HR – Explained how BCOP has installed a Koala “Tree-Troff” at Heathcliffe property.

## **7. General Business.**

CC – Could the CCC visit the offsets (especially Springfield)?

HR – Can accommodate this and will try have an ecologist available for professional viewpoint.

CC – Would be good to see if the tree plantings have rebounded after the rain.

DR – Could BCOP provide some dates and options for an offsets tour?

HR – Yes **ACTION: Arrangements to be made for the members to visit the offset area.**

HR – Advertising has commenced for more members of the CCC.

DISCUSSION ITEMS
<p>DR – Encouraged everyone to spread the word. Potentially someone from an Environmental group or indigenous background would complement the current committee well.</p> <p>HR – CCC position was recently advertised at the BCOP ASCF meeting.</p> <p>DR – Thanks HR for informing the ASCF.</p> <p>HR – Advised that Anthony Margetts had resigned as GM of Boggabri Coal and has been replaced by Russell Taylor.</p> <p>DR – ARTC sent an email last week wanting to know if anyone wanted to be on the distribution list for their newsletter. CCC members should let DR know.</p> <p>DR – Encouraged everyone to spread the word about the Environmental Trust. The group has funds available for projects which support both the built and social environment within 25kms. The money is important to improve the welfare of the community.</p> <p>HR – Who can join the Environmental Trust?</p> <p>DR – States that anyone can join the Environmental Trust, it does not take much effort or time. States how it can create some fantastic outcomes and is very rewarding.</p> <p>DR – EPA has said the 2-year term for people on the Namoi Regional Air Quality Advisory Committee is up, so is encouraging more people to apply. DR will not be continuing to chair the committee but will keep sending the quarterly update.</p> <p>CC – Also confirms she is standing down from the committee.</p> <p>Meeting close 11:42</p>
<p><b>8. Next meetings</b> 29<sup>th</sup> October 2020</p>

Actioned against	Action to be done
BCOP	Provide a map with all current approval boundaries.
BCOP	Provide a table of BCOP's noise assessment criteria.
BCOP	Provide CCC with key points once review complete of blasts occurring on the 24 <sup>th</sup> & 31 <sup>st</sup> July.
BCOP	Arrange for an 'Offsets tour' for the CCC.



# CCC Meeting August 2020

13<sup>th</sup> August 2020



# Agenda

August 2020

- Confirmation of record keeping
- Apologies
- Declaration of pecuniary or other interests
- Confirmation of minutes
- Business arising from previous minutes
- Correspondence
- Company reports and overview
- General business
- Next meeting



## Business Arising from Previous Minutes.

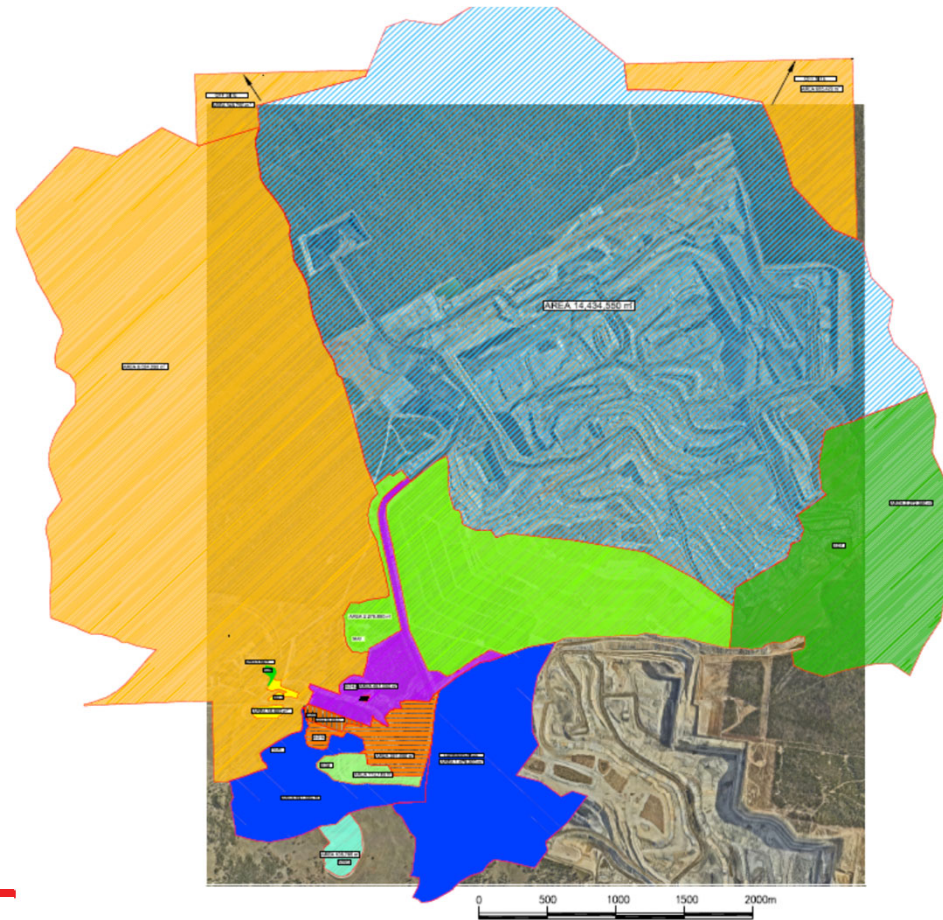
Actioned Against	Action to be done
BCOP	Provide a figure of BCM's dams & runoff catchments
BCOP	Provide a map showing overlapping leases CL368, A355, A339 and PL001. <b>COMPLETE</b>
BCOP	Provide a map of BCM's monitoring bores. <b>COMPLETE</b>
BCOP	Determine where 'Orica' source there explosives from. <b>COMPLETE</b>
BCOP	Provide update on the status of housing provision by BCOP in Boggabri & Narrabri post ELF



## 'Orica' blasting material source

- Raw materials are sourced from the 'Orica' facilities in Kurri Kurri, NSW
- The Detonators/boosters are sourced from 'Orica's' manufacturing plant in Helidon, QLD

# Dams Catchments & Runoff



出光 IDEMITSU

# Overlapping Leases PEL001





## Housing update for Boggabri & Narrabri.

Following commissioning of the ELF, BCOP will target the building of 3 houses per annum.



## Boggabri Early Learning Facility (ELF)

- Located on the corner of Brent and Oakham Streets in Boggabri
- Construction has commenced by a Tamworth based company
- It is expected to take 5 to 6 months to complete and should be operational 1<sup>st</sup> Quarter of 2021 subject to operator approvals
- Will cater for children 0 to 5 years and after school care for 6 to 12 years



## Correspondence

### NSW Department of Planning, Industry & Environment

- IEA scope and audit team.
- Consultation regarding 2020 Independent Environmental Audit.
- BTM Groundwater Model Update
- BCOP's Annual Review accepted as '*satisfying the reporting requirements of the Approval and the Department's Annual Review Guideline*'

### Department of Regional NSW NSW Resources Regulator

- Finalised CL368 Audit report (March 2020). Now published on website.

### Department of Agriculture, Water & Environment

- Approved Blast Management Plan (BMP) & Rehabilitation Management Plan (RMP)
- Annual Federal Approval compliance report submitted and published on BCOP website.
- Department of Agriculture, Water and Environment has directed BCOP to conduct an Audit of EPBC approval conditions.

## Correspondence

### Environment Protection Authority (EPA)

- Monthly noise reports.
- Formal warning letter for blast incident occurring 21<sup>st</sup> August 2019.
- Blast complaints received for blasts on 24/7 and 31/7 for 'fume exposure' and 'visible fume'.
- Spatial/mapping information requested.
- Conducted the 5 yearly Environmental Risk Assessment .

### Forestry Corporation of NSW

- Consultation re: negotiations about access agreements.

### Water NSW

- Usage/Meter readings.



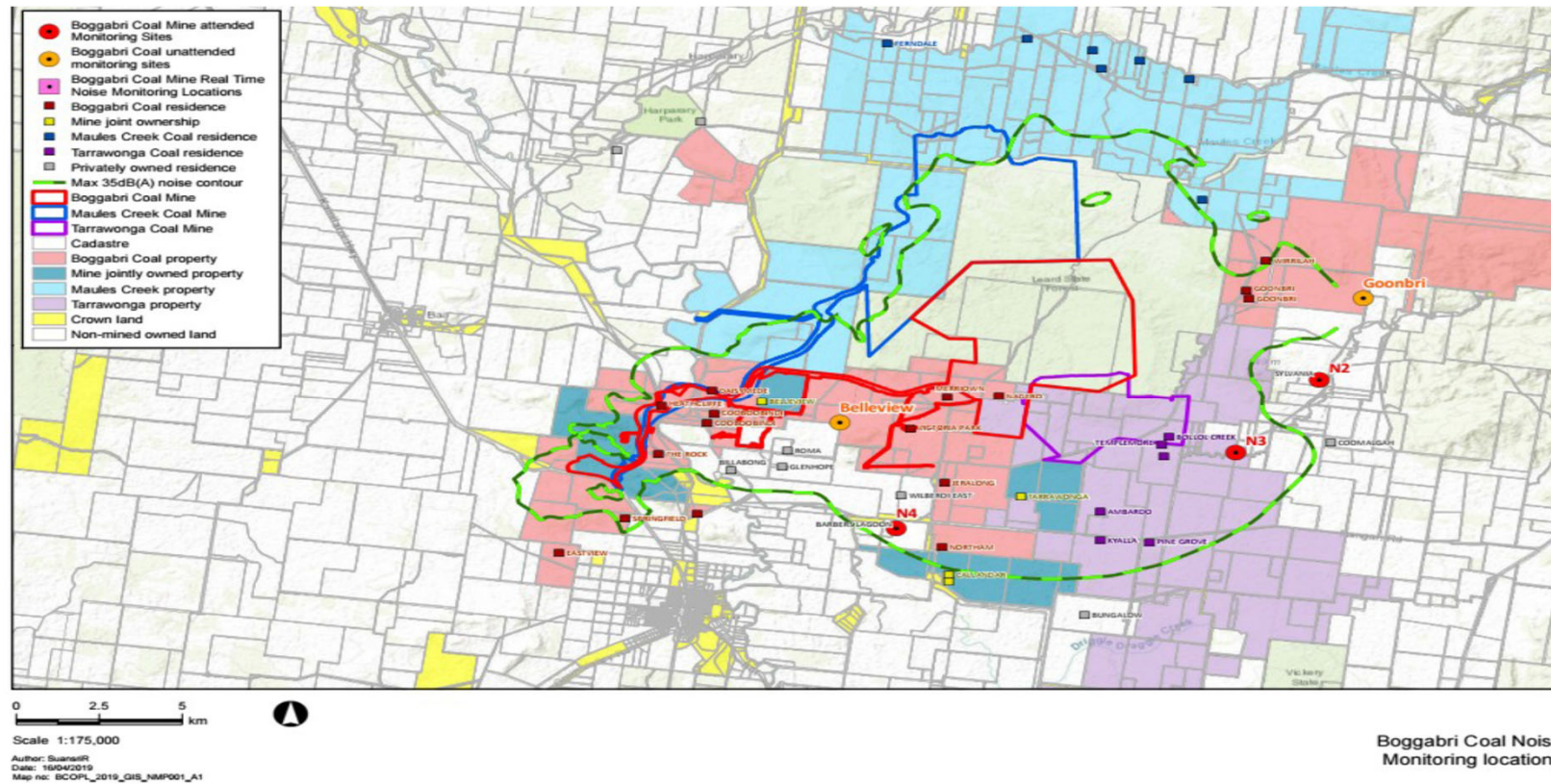
## EPA Environmental Risk Assessment

The EPA completed a risk review of BCOP activities based on the most recent site inspections, review of complaints received from the community and self reports from industry as well as phone discussions with licensees

As a result the risk level was changed from 'moderate' to 'low'.

***'This is a reflection on improved management of the surface water collection system at the premises and reduction in noise complaints over the last five years'. NSW EPA.***

# Attended Noise Monitoring





## Attended Noise Monitoring

Monthly monitoring conducted in May, June & July 2020.

### Night-time monitoring

Carried out in accordance with requirements of the EPL and Australian Standards

There were no exceedances of EPL or Project Approval criteria during the monitoring.

## Attended Noise Monitoring Results – 2019/20.

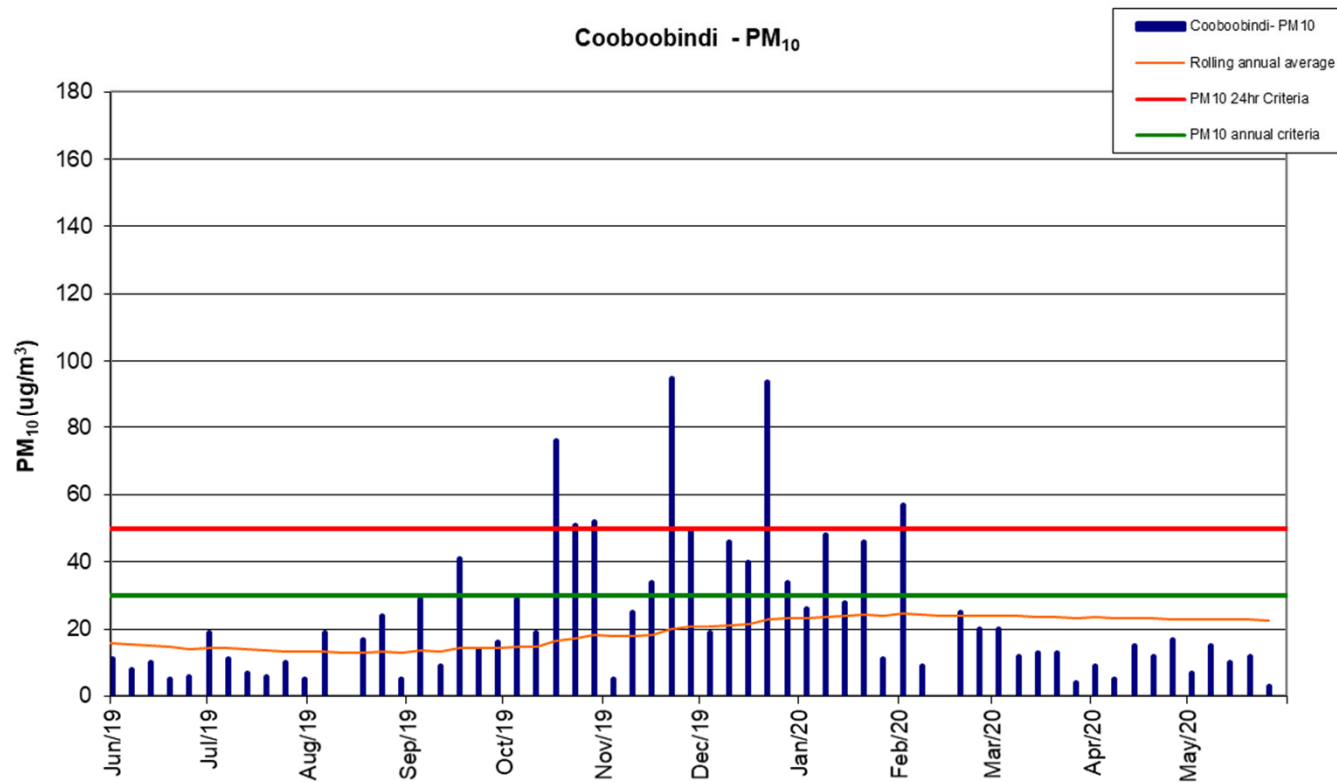
Attended Noise monitoring location	LAeq, 15min Impact Assessment Criterion	Aug- 19	Sep- 19	Oct- 19	Nov- 19	Dec- 19	Jan-20	Feb-20	Mar-20	Apr-20	May- 20	June- 20	July- 20
Sylvania	35	IA	IA	IA	IA	IA	IA	IA	IA	IA	IA	IA	IA
Picton	35	<30	IA	IA	IA	IA	IA	IA	IA	<25	IA	IA	28
Barbers Lagoon	35	IA	IA	NM	IA	IA	IA	29	IA	IA	IA	25	IA

IA: no site noise was audible at the monitoring location

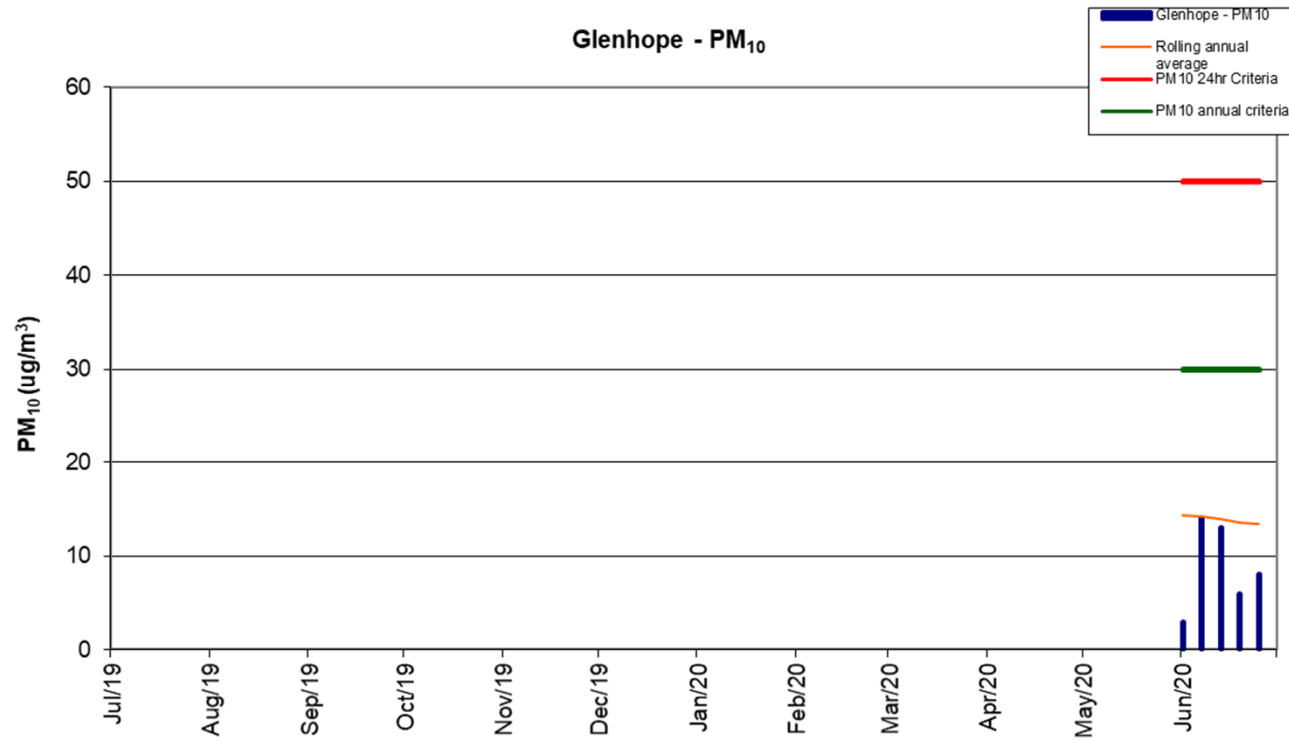
NM: Some site noise was audible but could not be quantified.



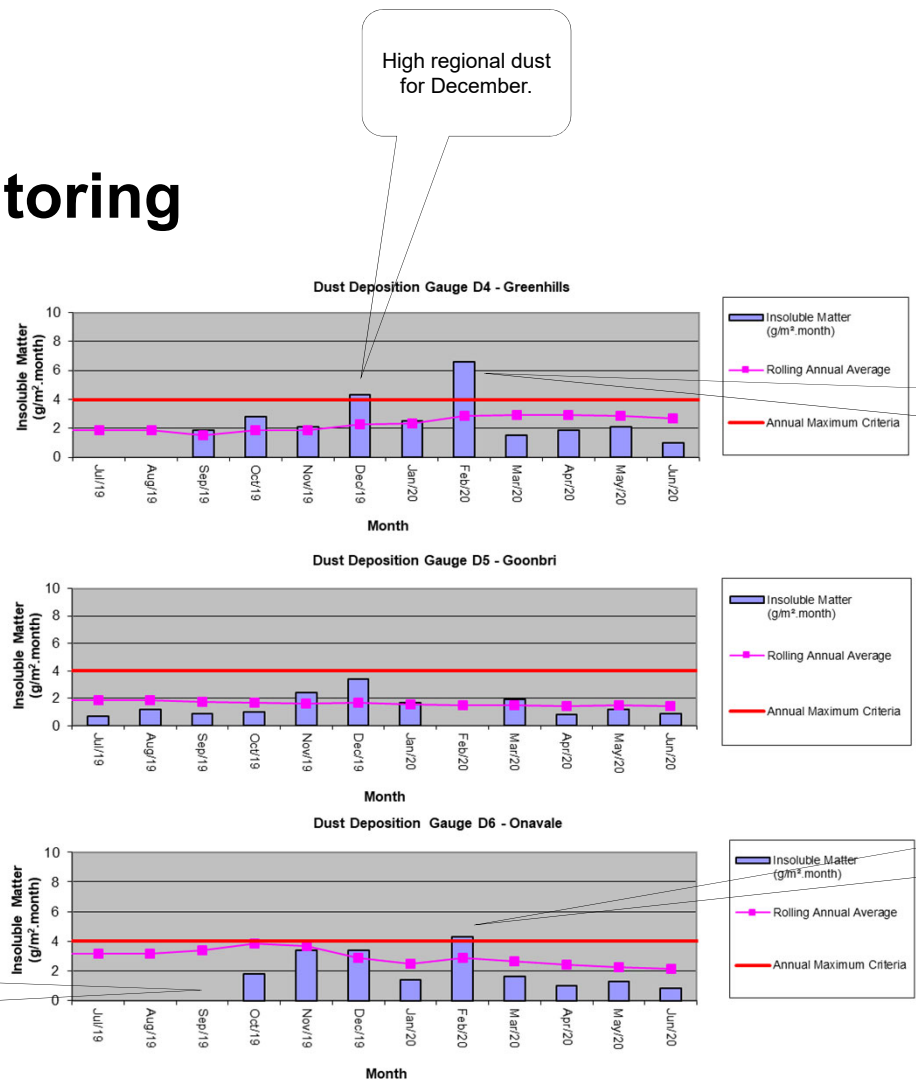
# Air Quality Monitoring



# Air Quality Monitoring



# Air Quality Monitoring



High regional dust for December.

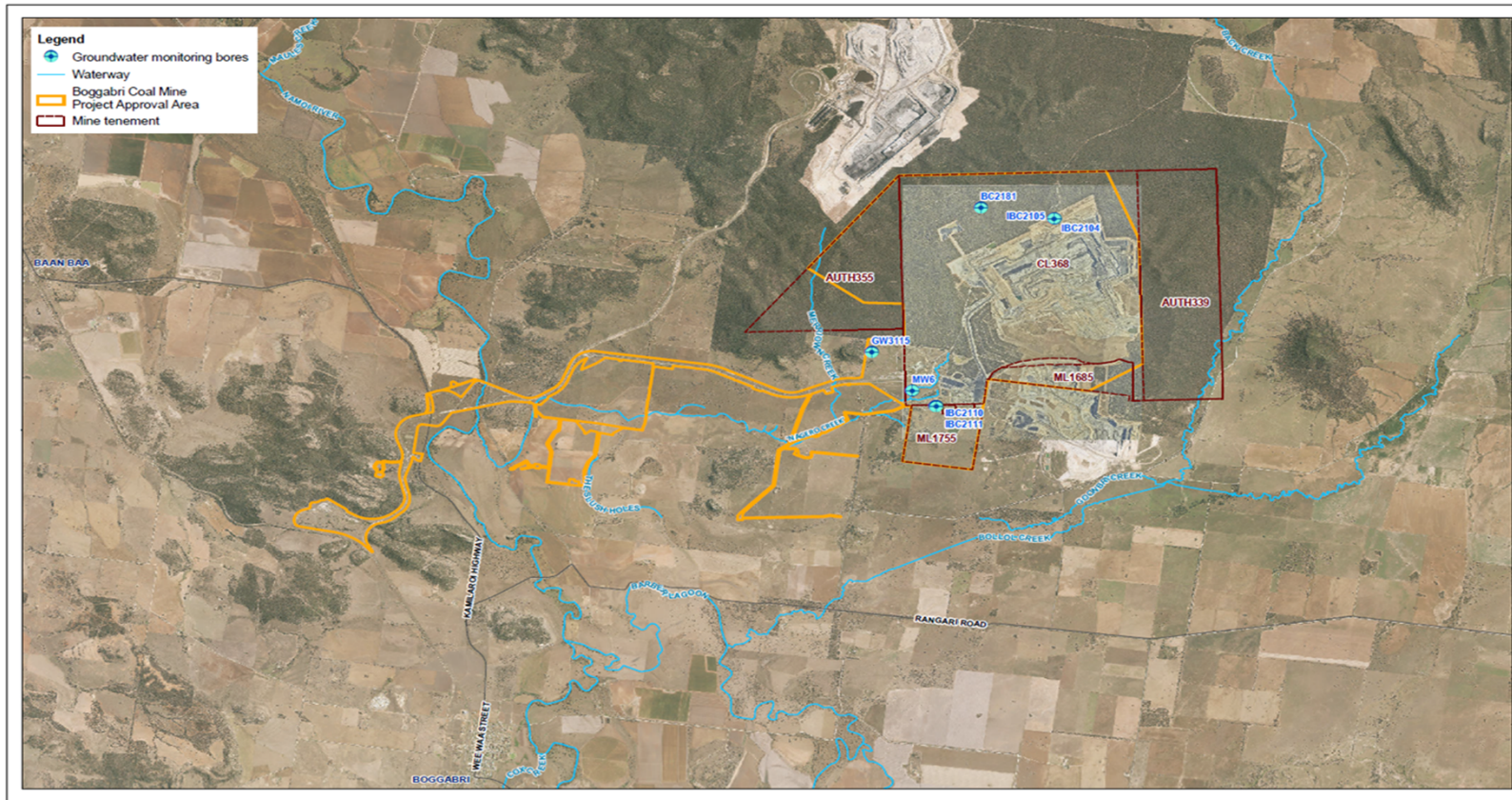
Dominant Easterly wind for February. Wind would need to be from the South for Greenhills to be affected by BCOP.

Dominant Easterly wind. Elevated levels not due to BCOP. Wind would need to be SW dominant for Onavale to be affected by BCOP.

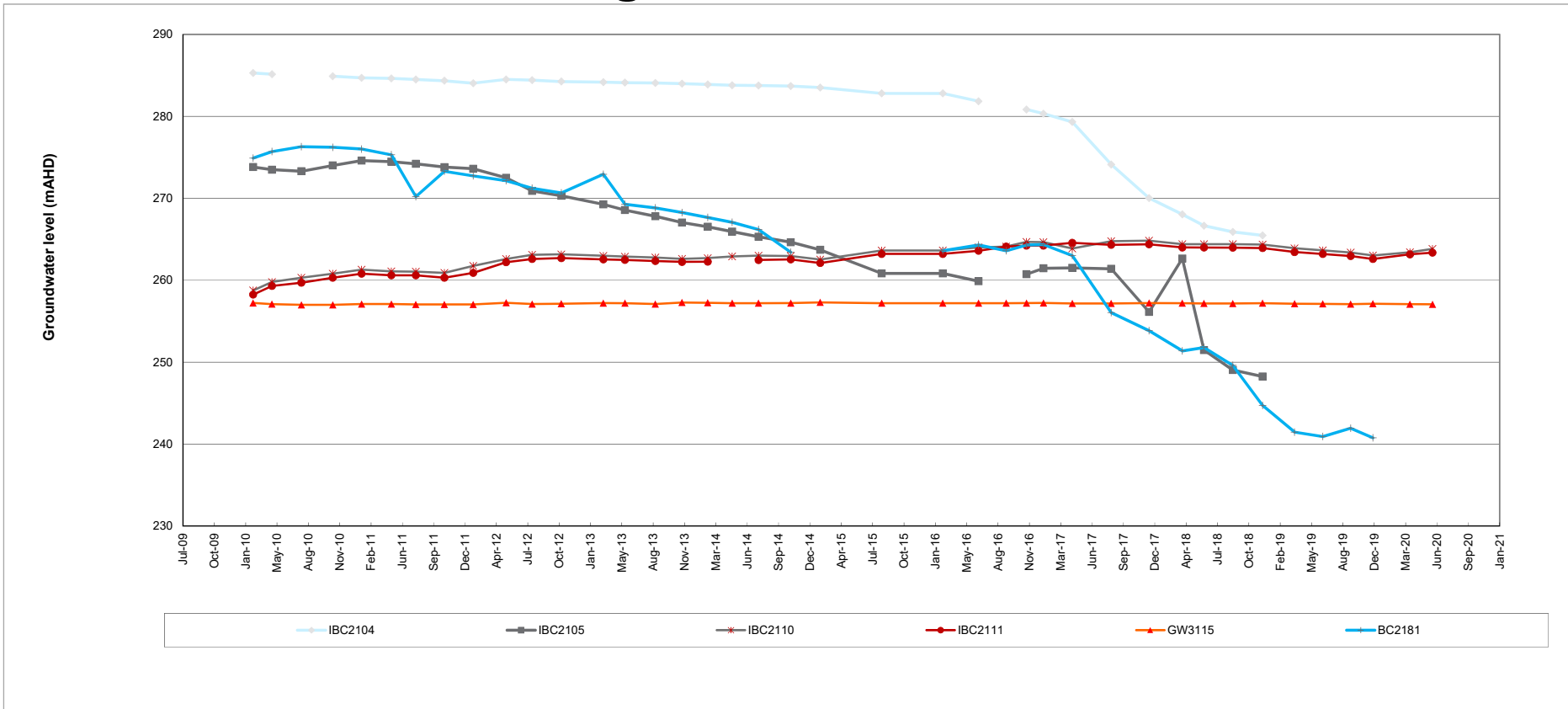
January – September significant contamination from bird droppings



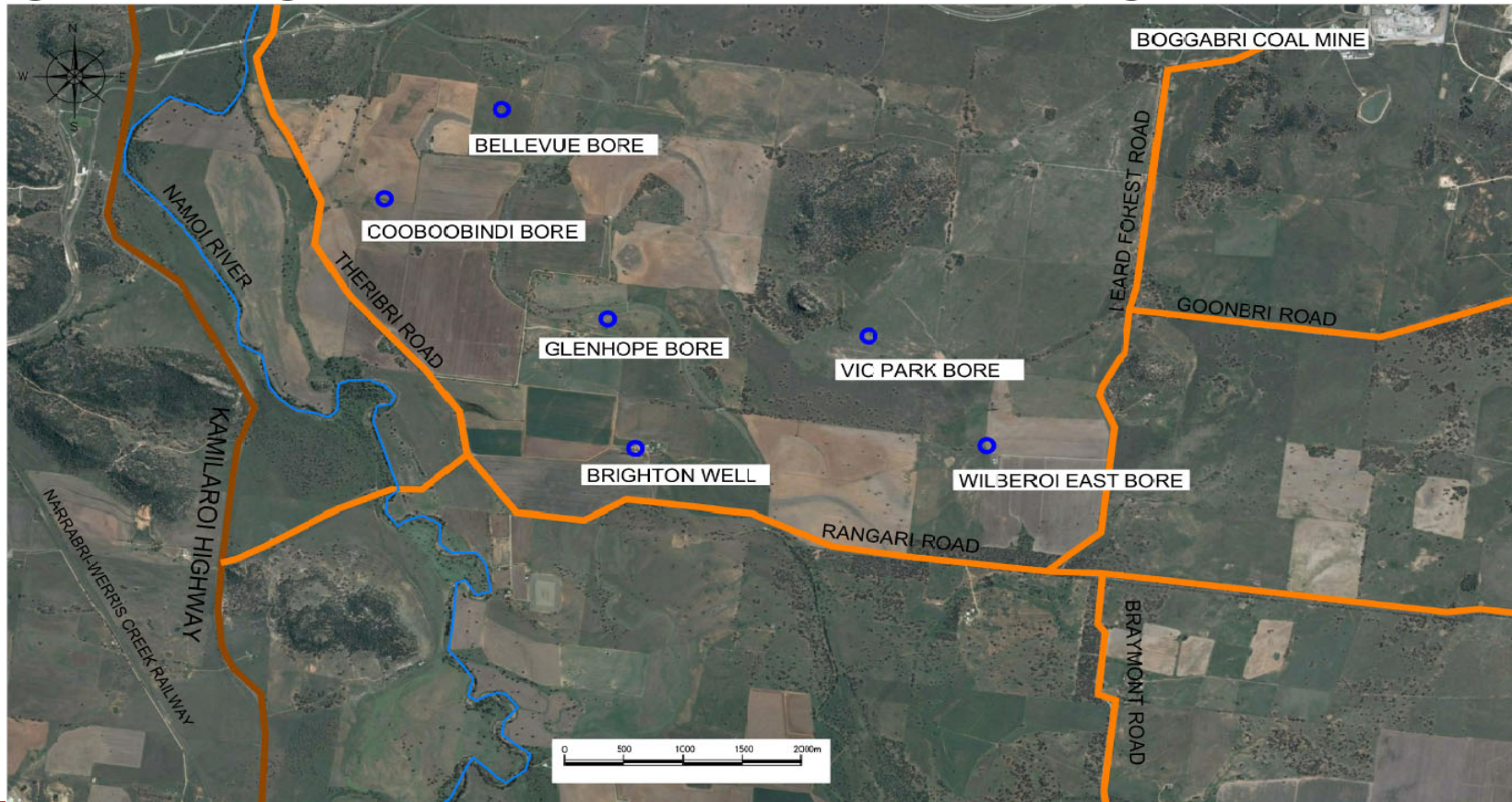
# Groundwater Monitoring



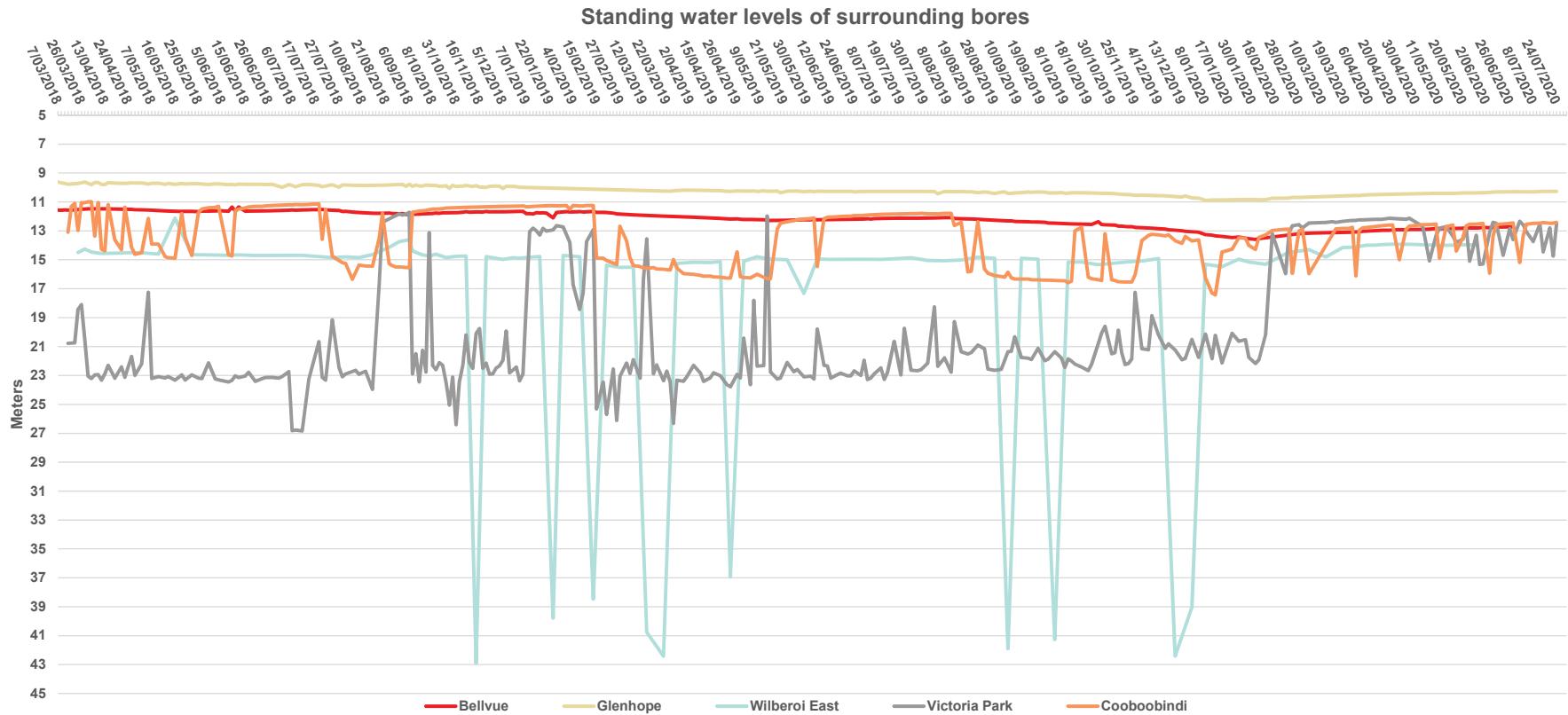
# Groundwater Monitoring



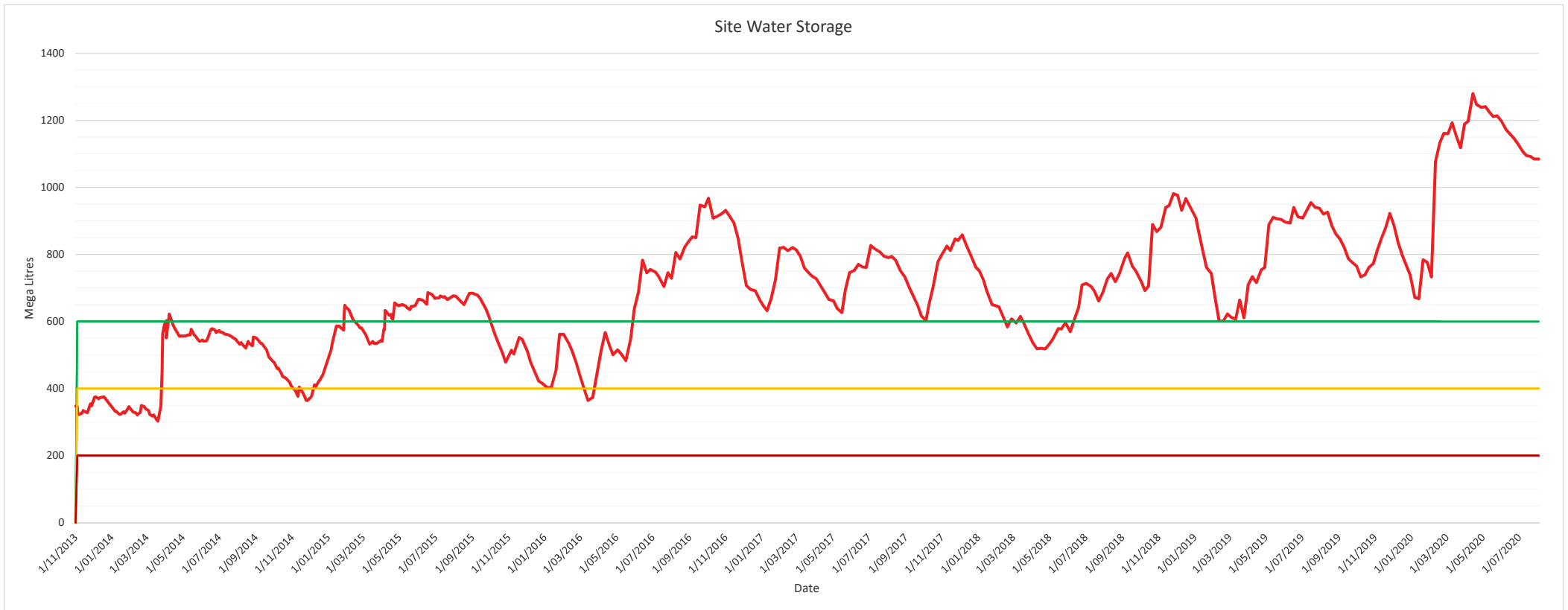
# Neighbouring Groundwater Bore Monitoring



# Groundwater Monitoring

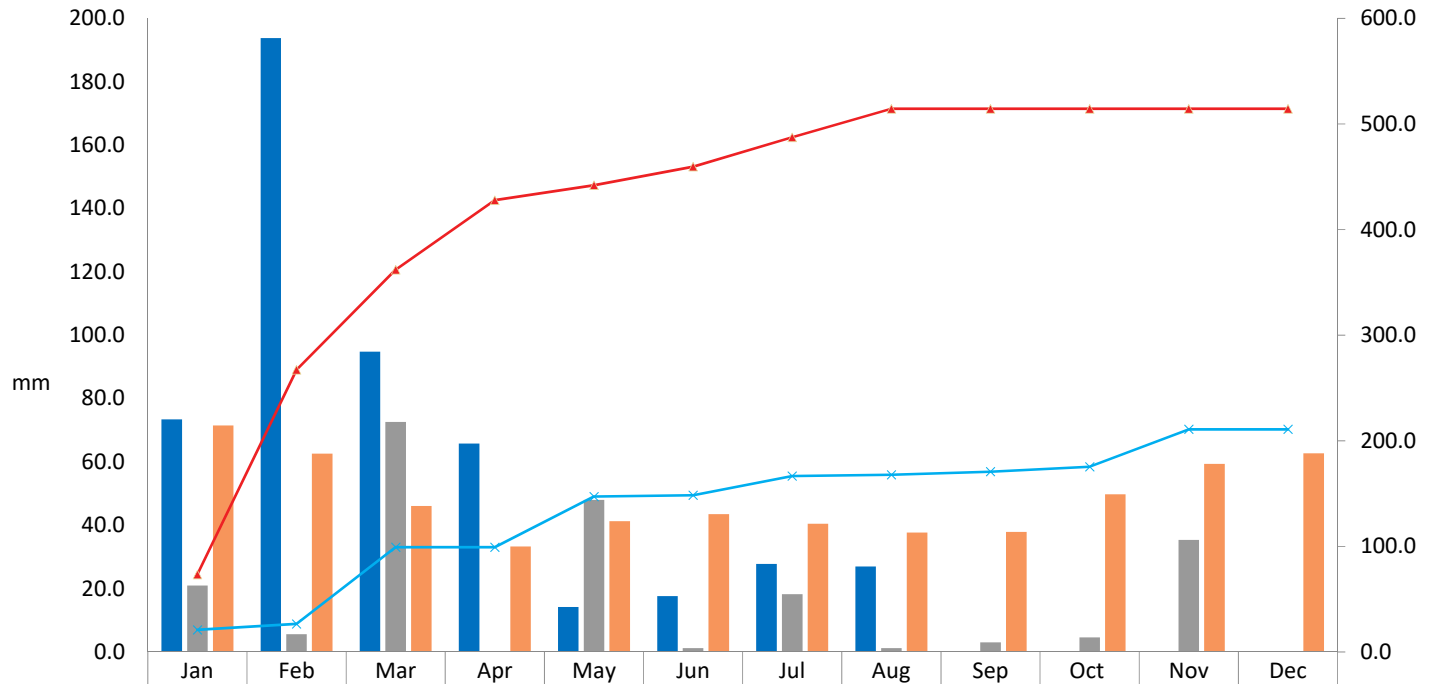


# Water Storage On Site



# 2020 Rainfall

YTD Rainfall 2020



	Jan	Feb	Mar	Apr	May	Jun	Jul	Aug	Sep	Oct	Nov	Dec
Month to Date	73.4	193.8	94.8	65.8	14.2	17.6	27.8	27.0				
Historical Site Data 2019	21.0	5.6	72.6	0.0	48.0	1.2	18.2	1.2	3.0	4.6	35.4	0.0
Historical Average (Boggabri Post Office)	71.5	62.6	46.1	33.3	41.3	43.5	40.5	37.7	37.9	49.8	59.4	62.7
Year to Date Cumulative	73.4	267.2	362.0	427.8	442.0	459.6	487.4	514.4	514.4	514.4	514.4	514.4
Historical Site Data 2019 Cumulative	21.0	26.6	99.2	99.2	147.2	148.4	166.6	167.8	170.8	175.4	210.8	210.8



## Community Complaints/Feedback

### May 2020 Noise Complaint

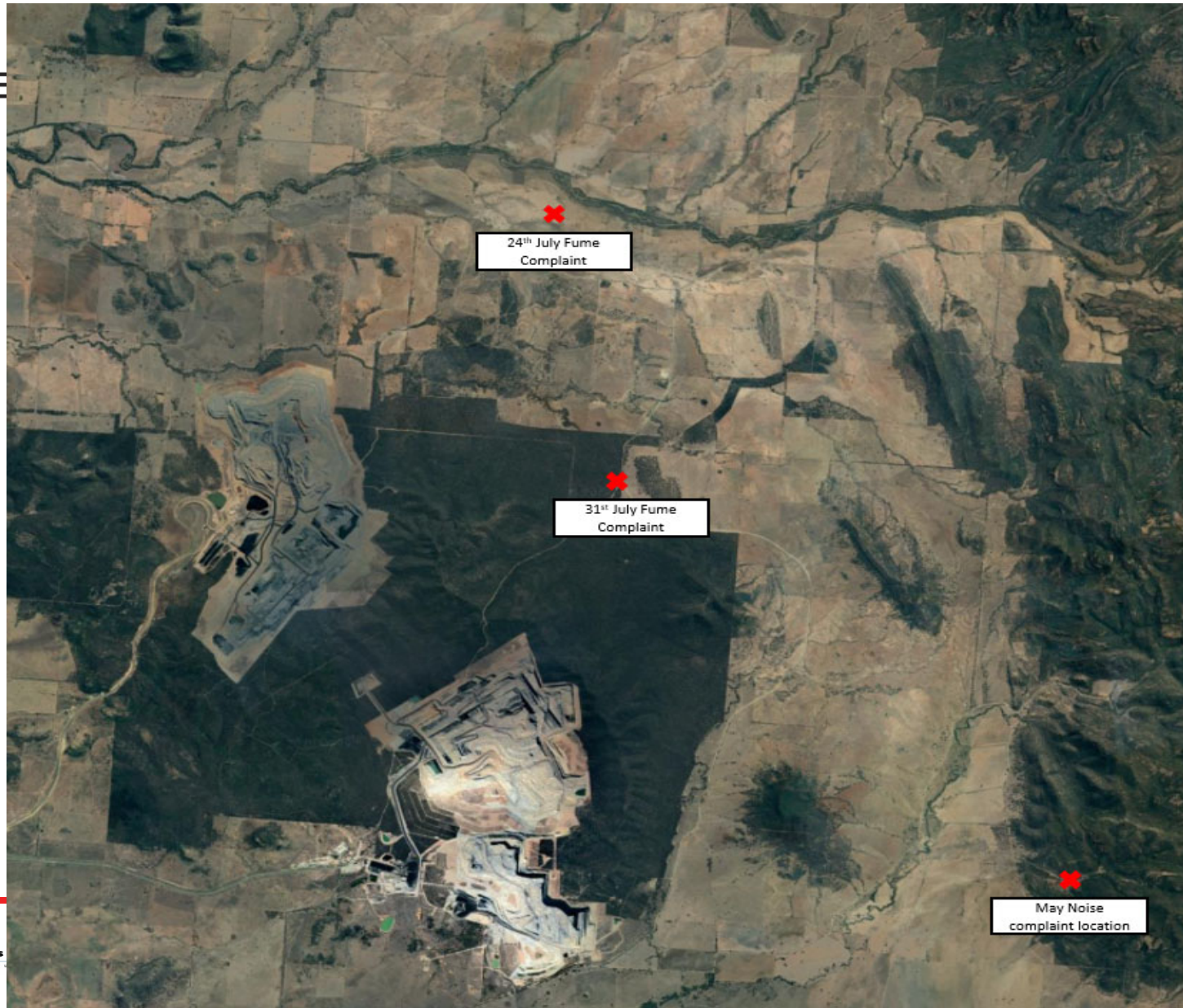
Noise complaint about the “hum” coming from the direction of the mine. Resident located 8km’s East from BTM.

### July 2020 - 2 Blast fume Complaints

Blast on the 24/7 prompted phone call to ‘1800boggabri’ community hotline, phone calls to the EPA and email to our ‘environmental’ email address, alleging effects from exposure to fume. Complainants are related.

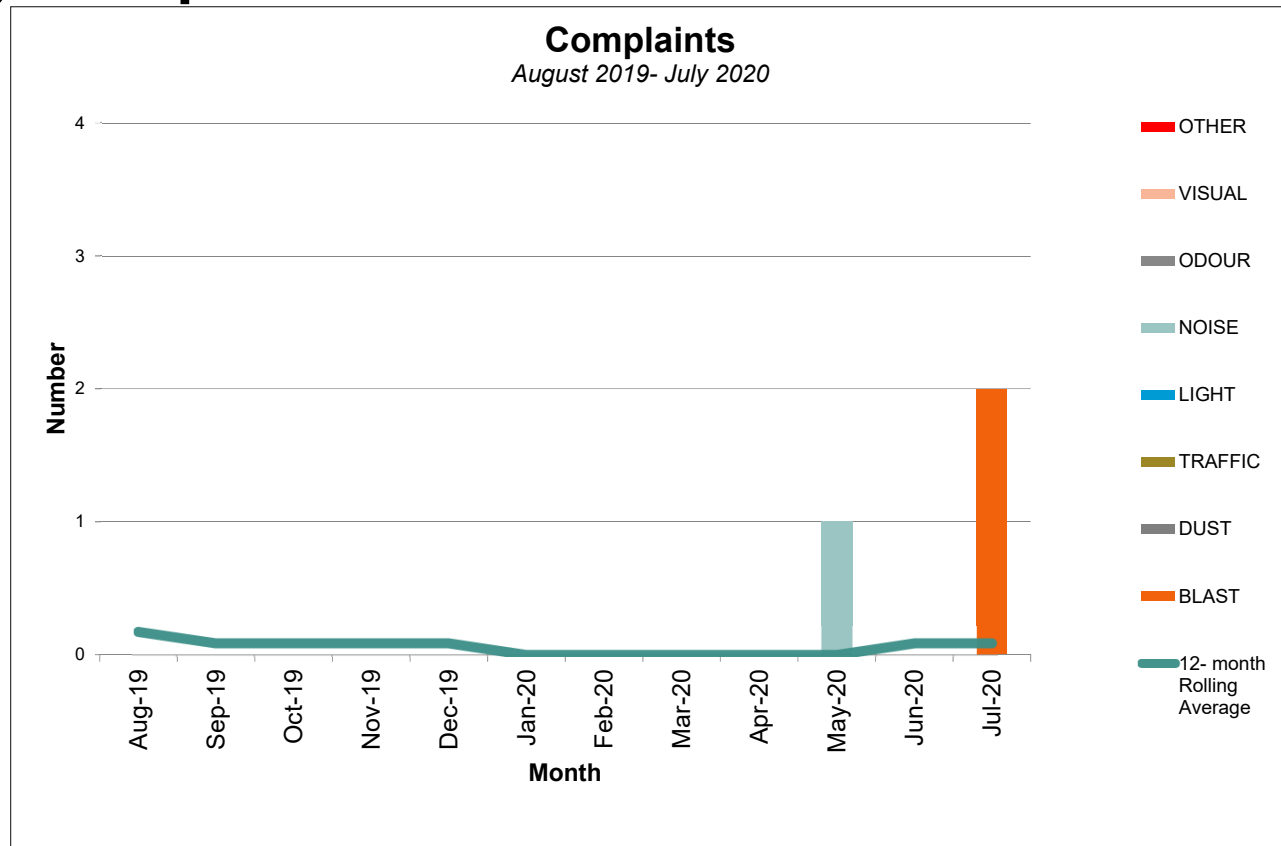
Blast on the 31/7 prompted complaint from community member/s about ‘visible fume’ via phone calls to EPA. Complainant requested to only communicate with EPA.





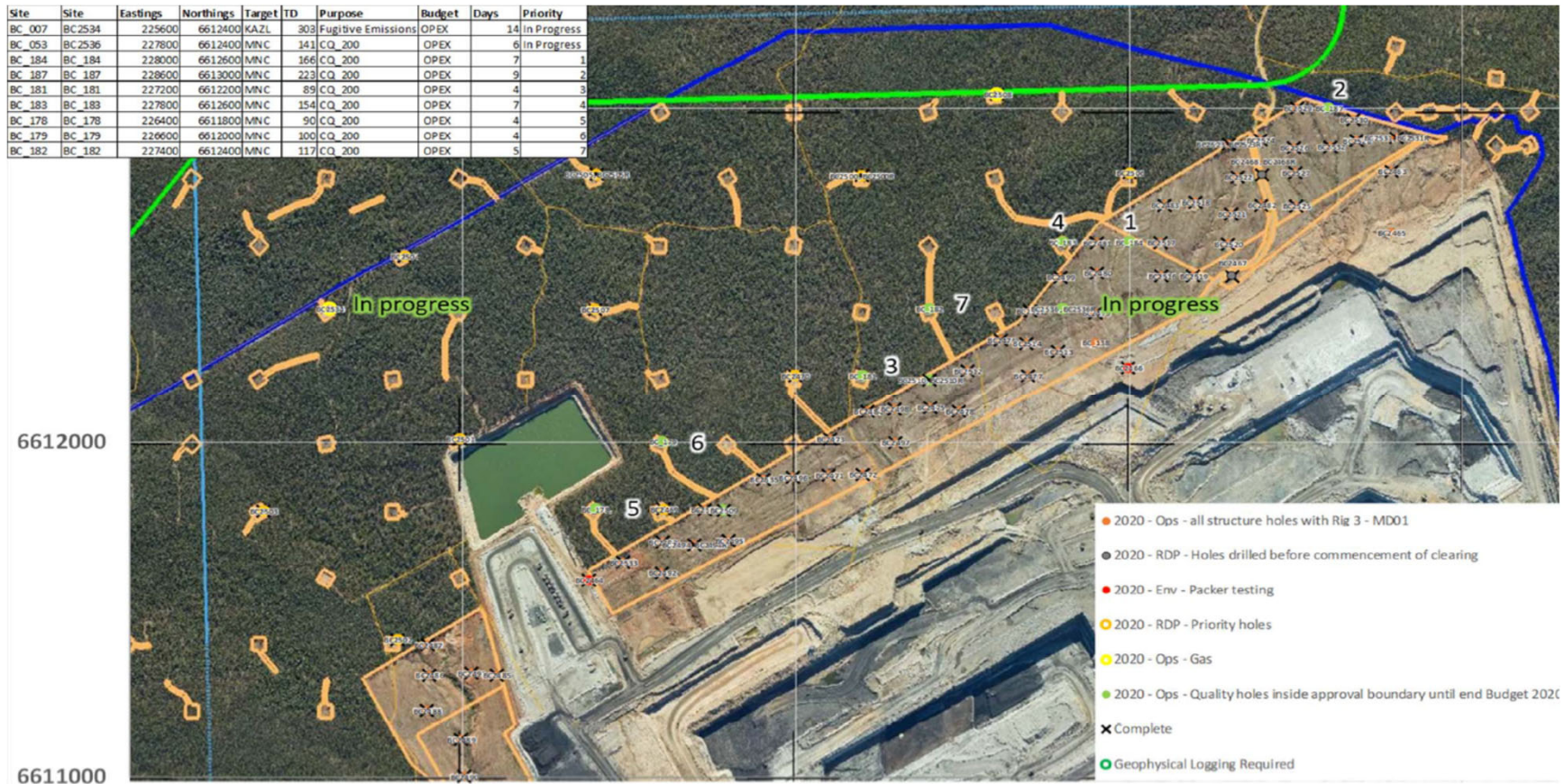


# Community Complaints

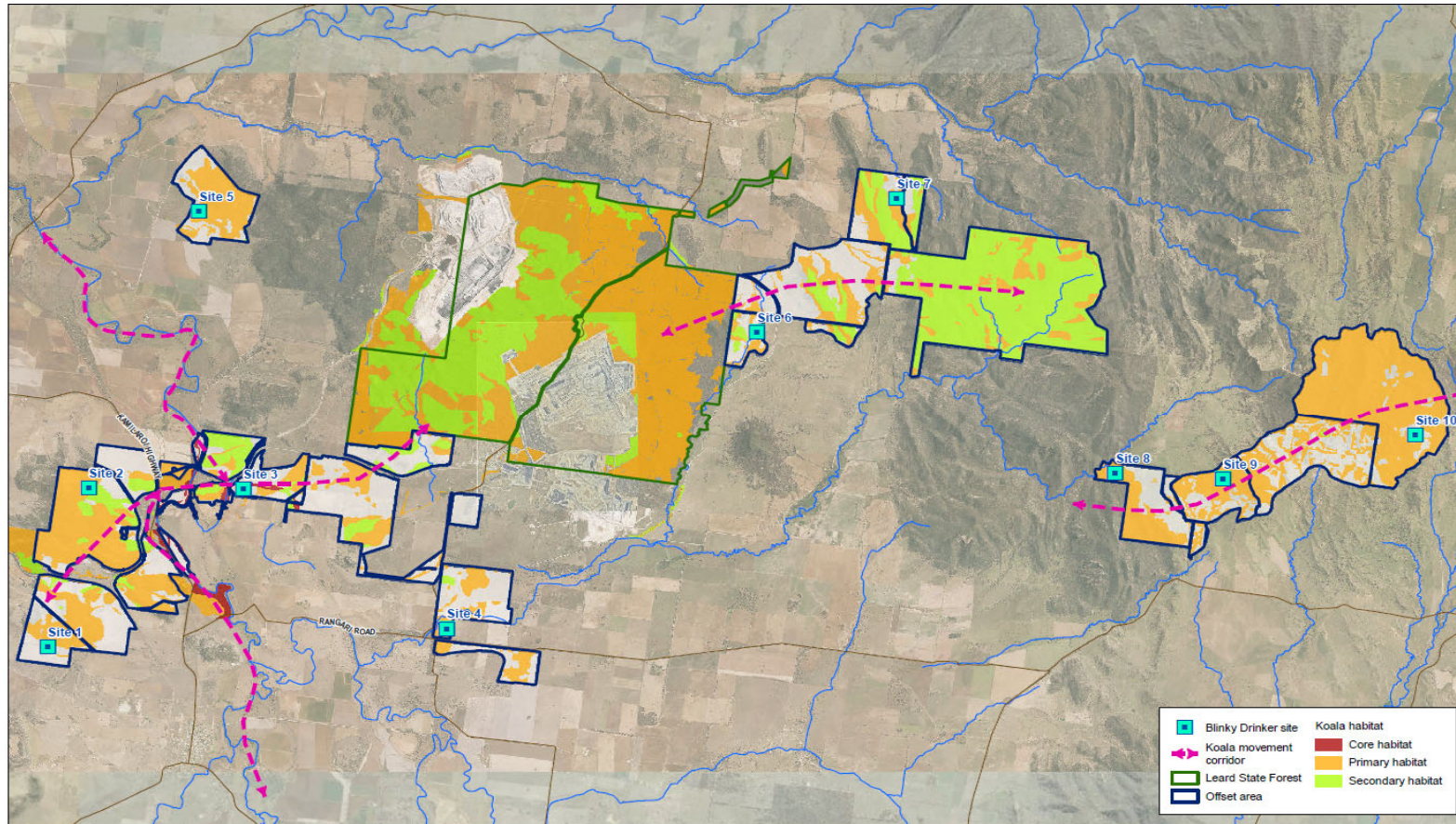


# Exploration Update

Site	Site	Eastings	Northings	Target	ID	Purpose	Budget	Days	Priority
BC_007	BC2534	225600	6612400	KAZL	303	Fugitive Emissions	OPEX	14	In Progress
BC_053	BC2536	227800	6612400	MNC	141	CQ_200	OPEX	6	In Progress
BC_184	BC_184	228000	6612600	MNC	166	CQ_200	OPEX	7	1
BC_187	BC_187	228600	6613000	MNC	223	CQ_200	OPEX	9	2
BC_181	BC_181	227200	6612200	MNC	89	CQ_200	OPEX	4	3
BC_183	BC_183	227800	6612600	MNC	154	CQ_200	OPEX	7	4
BC_178	BC_178	226400	6611800	MNC	90	CQ_200	OPEX	4	5
BC_179	BC_179	226600	6612000	MNC	100	CQ_200	OPEX	4	6
BC_182	BC_182	227400	6612400	MNC	117	CQ_200	OPEX	5	7



# Koala Recovery Strategy



## Successful Tree Troff Installation at 'Site 2'









REVEAL

031F -00C 20/07/2020 07:24:52



# General Business







## Next Meeting??

29th October 2020

Joint CCC

出光 IDEMITSU



End

