

OVERVIEW	
Meeting	Community Consultative Committee
Date	20/02/2020
	<b>Time</b> 10.00
Venue	Boggabri Coal Mine
Chairperson	David Ross
Attendees	Tim McDermott (TM), Hamish Russell (HR), Georgia Rogan (GR) David Ross (DR) Cath Collyer (CC), Ros Druce (RD), Mitchum Neave (MN), Robert Kneale (RK), Geoff Eather (GE), Anthony Margetts (AM), Daniel Martin (DM)
Apologies	Peter Forbes (PF), Richard Gilham (RG), Stewart Dunlop (SD)
Next Meeting	14th May 2020

ITEM	AGENDA
1	Apologies
2	Declaration of Pecuniary or other Interests
3	Confirmation of previous minutes
4	Changes to CCC Membership
5	Business arising from previous minutes
6	Correspondence
7	Company reports and overview
8	General business/questions
9	Next Meeting

DISCUSSION ITEMS
<p><b>1. Apologies:</b> See above.</p>
<p><b>2. Declarations of Pecuniary Interests:</b> DR – Declared he is paid a fee for his chairing services.</p>
<p><b>3. Acceptance of previous minutes:</b> Endorsed MN - questioned if previous items had been edited. TM – August minutes were edited and distributed. Previous meeting’s minutes (October) did not require editing.</p>
<p><b>4. Business from previous minutes:</b> <u>Local employment</u> HR – referred to CC’s query about employment figures raised before the meeting. CC – Asked for numbers of how many people have applied for jobs and subsequently been employed from the Boggabri area. Commented how accessing job vacancies is difficult, asking for a commitment from BC include job vacancies in the ‘Green Flyer’. Not easy to see jobs available. HR – Job seeking is difficult CC – Agrees.</p>

## DISCUSSION ITEMS

### ELF update

HR – Tenders have been received and evaluated. Expect to start within a month. Construction will take approximately 5-6 months. Operator license can't be finalised until construction is finished.

Provided construction drawings.

MN – Are the contractors local?

HR – Not closely involved with process but believes they are. Tender meetings were in Tamworth.

CC – Confirmed local people were consulted with.

**ACTION - Update on the houses being built for Boggabri.**

### Blast monitoring

HR – Presented additional blast monitoring exceedance event report details

### River allocation

HR – Water access licences are the right to access water. Explained the differences between the different licence types that BCOPL owns. All BCOPL river water is currently subject of 'drought suspension'.

MN – Concerned about recharge of the aquifer.

HR – There is scientific justification to allow access to groundwater.

MN – Is BC building up credit?

HR – carryover limitation of 2x your WAL for surface water licence. They only allocate water that is in the dam.

### Offset property progression

HR – Lots of monitoring is occurring on offset properties. BCOPL implement lots of management measures. Maximise salvage of habitat resources from tree clearing to improve habitat potential of offsets. BC does not have ongoing timelines that have to be satisfied.

MN – Does BC have shared offsets with neighbours?

HR – Few jointly owned properties. Cannot offset the same thing. Still need to sort out how BCOPL and neighbouring mines will share offset value of jointly owned offset properties. Only a small portion of our total offset is shared.

RD – How's the progression with the biodiversity trust.

HR – Just received an extension because the regulator cannot process our application within requisite timeframes.

**ACTION - HR to confirm new extension date for retiring offsets with BCT.**

CC – Is the regulator causing delays or is it BC?

HR - Date was unreasonable, effect on environment is purely administrative.

RD - Continual extension a concern for the community. Is it the company or regulators?

HR – Dealings with multiple regulators on the same issue is difficult. One objective with two masters.

RD – What are the issues?

HR- HR to arrange more detailed insight from DM.

### Tylophora linearis

HR – Presented slide

### Koala watering project.

HR – significant progress has been achieved.

RD – Is BC considering locations in the forest?

DISCUSSION ITEMS
<p>HR – Yes, 10 watering units, quote has been received to build and supply and provide training. Peter met with Robert Frend. Locations are yet to be determined and once decided, locations need to be ground truthed.</p> <p>RD – Are cameras going to be installed on the drinking locations?</p> <p>HR – Yes, up for consideration.</p>
<p><b>5. Correspondence</b></p>
<p>DPIE – RFI request tree clearing program DPIE Resources Regulator – provided MOP approval 2020-2024 due to pit progression earlier than planned for in 5-year mine progression plan. Available on website. <b>ACTION – BCOP to provide visuals of current progression compared to 5-year mine progression plan.</b></p> <p>DoEE – disturbance boundary adjustments and exploration queries. Whether or not planned exploration falls under current approvals. New MOP had no change in exploration activities.</p> <p>EPA – monthly noise reports, water query letter and EPL variation application (monitoring points that don't exist, updated mapping and typos).</p> <p>MN – Is the 250m wildlife corridor affected?</p> <p>HR – No. If changes are planned the CCC will be notified.</p>
<p><b>6. Company Reports &amp; Reviews:</b></p>
<p><u>Exploration</u> HR – Explains 2019 exploration and key.</p> <p><u>Attenuated noise monitoring</u> HR – No issues or exceedances. Monthly reports sent to EPA MN – How many of BC's machines now have noise reduction kits on them? HR – All machinery has some equipment, but not meeting noise limits (which will fix a noise impact issue that doesn't exist). <b>ACTION – HR to provide information of noise attenuation currently on machines.</b></p> <p><u>Air quality monitoring</u> HR – air quality issues state wide late 2019 with dust storms. Reflected on site monitoring.</p> <p><u>Air quality</u> HR – runs through slide. DR – A regional air quality meeting will be held in March.</p> <p><u>Groundwater monitoring</u> HR – Graph of separated hard rock and alluvium groundwater level results. Alluvium dropping slightly due to drought. CC – Did Cooboobindi bore drop once neighbouring mine started extracting ground water? HR – We don't know the date of other users pumping. We turned off our bores once we became aware of other users pumping. We had enough onsite storage at the time. Bore monitoring reports standing water level every 15 mins. We have historical data and physical measurements from dips and water quality sampling. We can compare results to when other users were pumping, but we haven't yet.</p>

## DISCUSSION ITEMS

CC – With the drought, did BC supply water to rural landholders. Mod 5 changes meant neighbour was worried about his bore water.

HR – Yes, BCOPPL responded to the concerns of a neighbouring user by installing a new stock and domestic bore for them as well as upgrading the associated infrastructure.

### Water storage on site:

HR - 700ML before rain, 1.2GL now in dams. More than 2GL of dam storage is available.

### YTD Rainfall

HR - Column graph

### Complaints

HR - None in reporting period. None in 12 months.

## **7. General Business.**

### Operations update – pre-meeting.

AM - 100 hours lost time in 2019 directly from strike action plus additional disruption time.

Fell behind production target. This year is about recovering. Blasting stocks are quite low.

- Workforce has returned, relationships are improving, and talks have been occurring. Cultural improvement projects are planned for this year.
- Biggest current impact is rain; more rain has fallen in 2020 than all of 2019. In front of averages.

RK – Have there been any positive impacts from the rain?

HR – Before rain 700ML was stored in dams. This is now over 1200ML. No longer have to rely on bores, lets BCOP water accounts build up and improves sustainability of aquifer.

AM – Expect to be pumping out of pit and into storage dams for the next few months. Won't be reliant on bores. Had a discharge through a licensed discharge point during rain and did not breach approval/EPL conditions which is a positive.

MN – Gunnedah is on water restrictions. What did BCOP do?

AM – BCOP commenced water conservation project last year. Main water users are coal plant and water carts. Reduced water cart usage while meeting legal requirements. This project is continuing this year.

MN – Did aquifer levels decrease before rain?

AM – Bores consistently used during drought due to no pit water.

MN – Concerned that mine continued to pump water while Gunnedah had water restrictions.

HR – Personally thought Gunnedah water restrictions were knee jerk decision, more for perception reasons. Gunnedah water is same aquifer as mine which recharges well. Compared to Tamworth which had strict restrictions due to significant reliance on dam water.

MN – Disagrees. Restrictions are directly related to bore levels. States that Gunnedah has had water restrictions in the past.

HR – Bore levels are available online. Levels will drop but recharge occurs. Drought and rain make them slightly fall and rise.

AM – Bore fields aren't a permanent water supply for the mine. BCOP is doing everything it can to conserve water and has dropped water cart usage as low as possible.

## DISCUSSION ITEMS

### CCC members

DR – CCC is currently down an environmental representative. DR talking to PF and DPIE regarding recruitment.

CC – Question if we can get a member of a local environmental group.

HR – Noted trouble getting responses to advertisements, but suggestion is good. Previous groups that applied were not appropriate under guidelines.

CC – Suggested DPIE will be more relaxed this time.

MN – Suggested two Aboriginal reps as previously occurred.

HR – Explained two Aboriginal reps aren't required under guideline, but will accommodate if they meet the guidelines.

MN – Questioned how long terms on the committee are.

DR – Confirmed there are no terms or time periods.

DR – Stated one CCC position is available and asked for suggestions regarding what type of group/person to fill it with.

GE – suggested business community

MN – suggested Aboriginal representative or organising a backup representative for himself.

**ACTION – DR to consult with MN to organise back up representative.**

### **From 11:30am (after 5 min break)**

DM: Explained BCT approval

- Application given to BCT
- Conversations with NSW National Parks and Wildlife Service (NPWS) have stalled due to the bushfires.
- Two offset properties around mine have been looked at by NPWS regarding whether they would like to acquire them. Had a meeting with BCT director and regional manager in December. BCT expressed that they are understaffed and applications will not be processed for at least 18 months. They require payment/fee first. BCT want to use a different scale map for determining offset area required. They want 1:5000, we used a larger scale in approvals. Issues with property boundaries around Namoi River not lining up. This still needs to be discussed with BCT.

RD – Community concerned if offsets are like for like. RD's discussions with BCT seem inconsistent with what BCOP is saying.

DM: Concerned that scale of mapping means we might have different hectares of vegetation in reality compared to what is mapped and subsequent community expectations. BCOP have surplus potential offsets that are being managed as offsets but aren't in the application.

States BCOP will need another extension before it is all finalised.

CC - What other properties will be given to NPWS?

DM – Part of eastern offsets that is already in good condition might go to them as well in the future. Has not been discussed with NPWS.

MN – Asked if a map of TSRs around offsets is available. Concern that TSRs are locked up by offsets.

DM – No TSRs occur within the offsets. No TSRs will be purchased or managed by BCOP.

**ACTION – HR to provide a map of TSRs around offsets**

RD – questioned how much clearing is planned for 2020

**DISCUSSION ITEMS**

HR – presented map. Approx. 80ha of pit advancement clearing and 30ha of exploration related tree clearing (40x40m plots and 10m wide access tracks) is planned for 2020.

**ACTION – HR to forward map of clearing planned for 2020 to CCC members.**

RD: Questioned if BCOP use styrofoam fillers when they blast.

HR – No, but BCOP is aware they are used elsewhere. They are an industry practice but BCOP doesn't use them.

RK: explained he has an explosive license and the common material is stemming, which is drill material from the hole/gravel.

RD – Questioned how BCOP is dealing with weeds in rehab areas.

HR – BCOP does not have a significant number of weeds. But would spray weeds with herbicide.

CCC Reflections

DR - Asked members to discuss a) big things over last 12 months and b) what you want to get out of the CCC over the next 12 months for annual report required by CCC guideline.

RK - Happy. Discussed issue regarding number of trees planted.

GE – Agreed.

CC – Agreed reports and communication is good. Suggested larger font on PowerPoint print out. Expressed wish for open relationship to continue.

RD – Happy that questions are being answered and CCC members can forward information to the community.

MN – Agrees BCOP goes beyond requirements. Would like more site visits.

HR – relieved CCC had a good mix of people.

- Suggested meeting needed to stay on topic and talk about BCOP items only.
- Wished to respond to questions between meetings in the future.
- BCOP is open to site visits; dates need to be organised.
- Request that agenda items be sent to DR prior to meetings.

**8. Next meetings**

14<sup>th</sup> May 2020

Actioned against	Action to be done
BCOP	Update on the houses being built for Boggabri.
BCOP	Consider advertising all vacant BCOP positions in the Boggabri green flyer.
HR	Confirm new extension date for retiring offsets with BCT.
BCOP	Provide visuals of current progression compared to 5-year mine progression plan.

BCOP	Update on noise attenuation. How many trucks have it?
HR	Provide a map of TSRs around offsets
HR	Forward map of clearing planned for 2020 to CCC members
DR	DR to consult with MN to organise back up representative.



# CCC Meeting February 2020

20<sup>th</sup> February 2020





# Agenda

February 2020

- Confirmation of record keeping
- Apologies
- Declaration of pecuniary or other interests
- Confirmation of minutes
- Business arising from previous minutes
- Correspondence
- Company reports and overview
- General business
- Next meeting

# Business Arising from Previous Minutes.

Actioned Against	Action to be done
HR	What is BCOP's river allocation?
BCOP	Find the plan for <i>Tylophora linearis</i> found in the forest.
BCOP	Find out where <i>Tylophora linearis</i> occurs in the offsets
BCOP	List of offset property's and how they are progressing.
BCOP	Look into watering points for koala's in offsets.
BCOP	Provide a date and more details about BCOP's blast exceedance on the 21 <sup>st</sup> August 2019.
BCOP	Differentiate between bores in the hard rock and on the alluvium in groundwater monitoring graph.
DR	Annual review and reflect on 2019 performance of CCC.

# Employee localities

Locality	BCOPL Employee Residency	One Key Resources	BGC Contracting Pty Ltd	Other Contractor
Gunnedah	152	6	3	3
Boggabri	49	24	8	7
Narrabri	39	3	2	5
Baan Baa	3	4	1	0
Manilla	20	6	3	3
Tamworth	22	5	1	1
Curlewis	5	2	1	0
Other NSW	84	32	8	22
QLD	4	1	2	8
Tasmania	1	0	0	0
<b>Total</b>	<b>379</b>	<b>83</b>	<b>29</b>	<b>51</b>

# ELF Update



- Tenders have been received and evaluated
- Shortlisted to two
- Contracts will be issued within two weeks
- Construction to commence within 3-4 weeks from contract execution
- Construction delivery program approx 5-6 months
- Operator will be applying for their license which can only be finalized once construction is finished

# River Allocation

BCOPL owns:

- 294 units of Lower Namoi Regulated River Water Source General Security Water Access Licence.
- 32.1 units of Lower Namoi Regulated River Water Source Supplementary Water Access Licence.
- 128 units of Upper Namoi Regulated River Water Source General Security Water Access Licence.
- 188Ml's of river account water is subject of 'drought suspension'.
- 32.1Ml's of supplementary river is available when WaterNSW says so.

# Offset property progression

We have secured all of the offsets required for the project. Each offset property is at different stages in terms of revegetation and biodiversity management.

Activities that are currently being undertaken are,

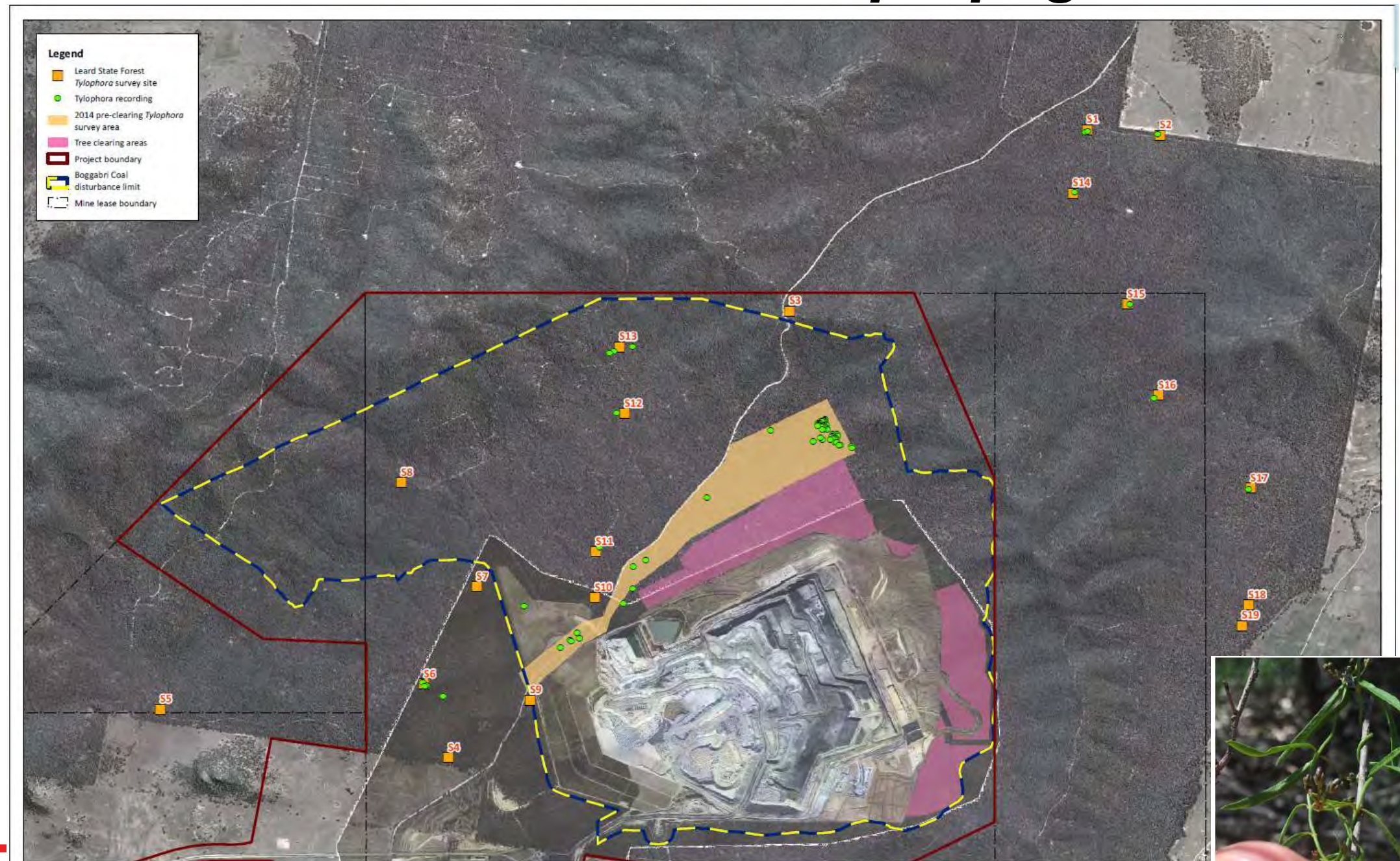
- Fencing
- Vegetation control
- Vertebrate pest control
- Habitat improvement, logs etc
- Tree planting
- Ongoing monitoring

# Appendix J - *Tylophora linearis* translocation and propagation management plan.

Appendix J of the Biodiversity Management Plan.

Has been located in the Namoi and Central Offsets. Records are detailed annually (when recorded) in LSF Biological Monitoring Report and BOA Monitoring Report.

The Biodiversity Offset Management Plan notes potential for it to be found on other offset properties.



## Koala Watering Project

          
Koala Workshop held onsite 10 December 2020. Attended by Project Ecologist, Group Manager Environment, CCC members.

Decision to install some Koala watering devices.

Peter Forbes visited a supplier of these devices, and subsequently ordered a suite of them.

Supplier to build and deliver devices to site.

Supplier to conduct a training session in the installation use and maintenance.

Final locations of installation of devices yet to be determined.



# Correspondence

---

## NSW Department of Planning, Industry & Environment

- RFI re: Tree Clearing Program

## NSW Department of Planning, Industry & Environment Resources Regulator

- MOP Approval 2020-2024

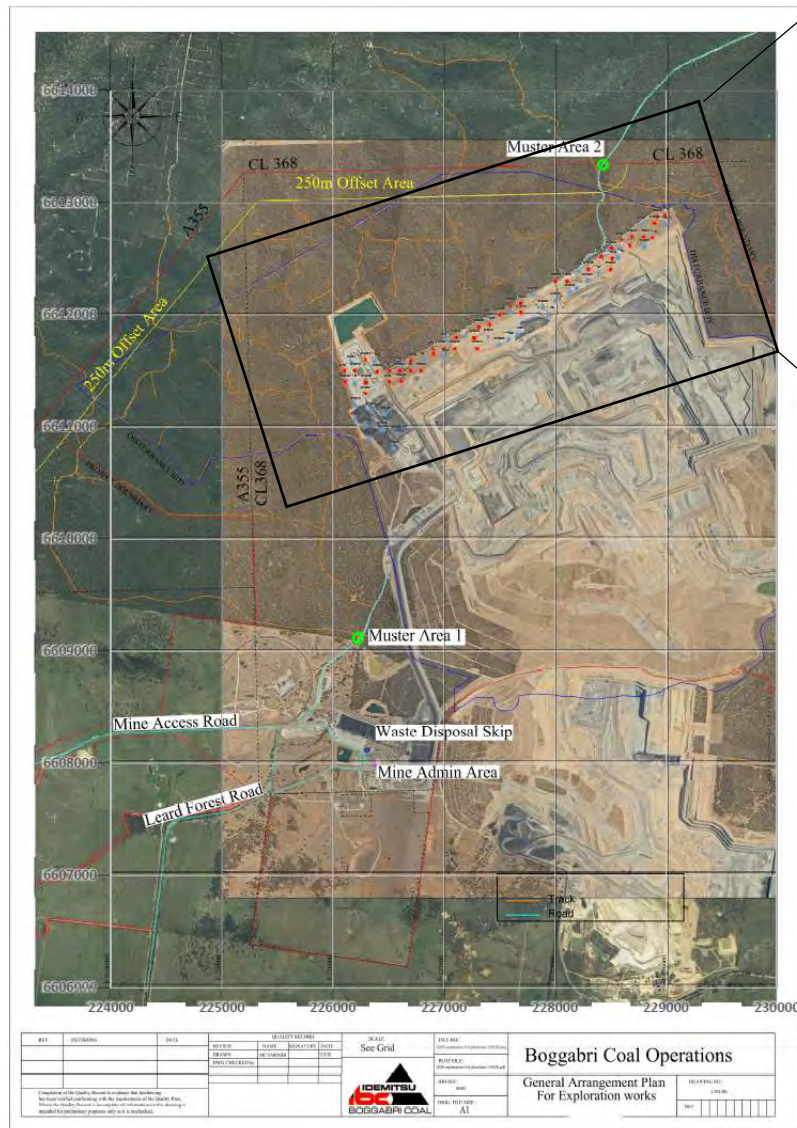
## Department of the Environment and Energy

- Disturbance boundary adjustments
- Exploration queries

## Environment Protection Authority (EPA)

- Montly noise reports
- Water Query Letter
- EPL Variation Application

# 2019 Exploration

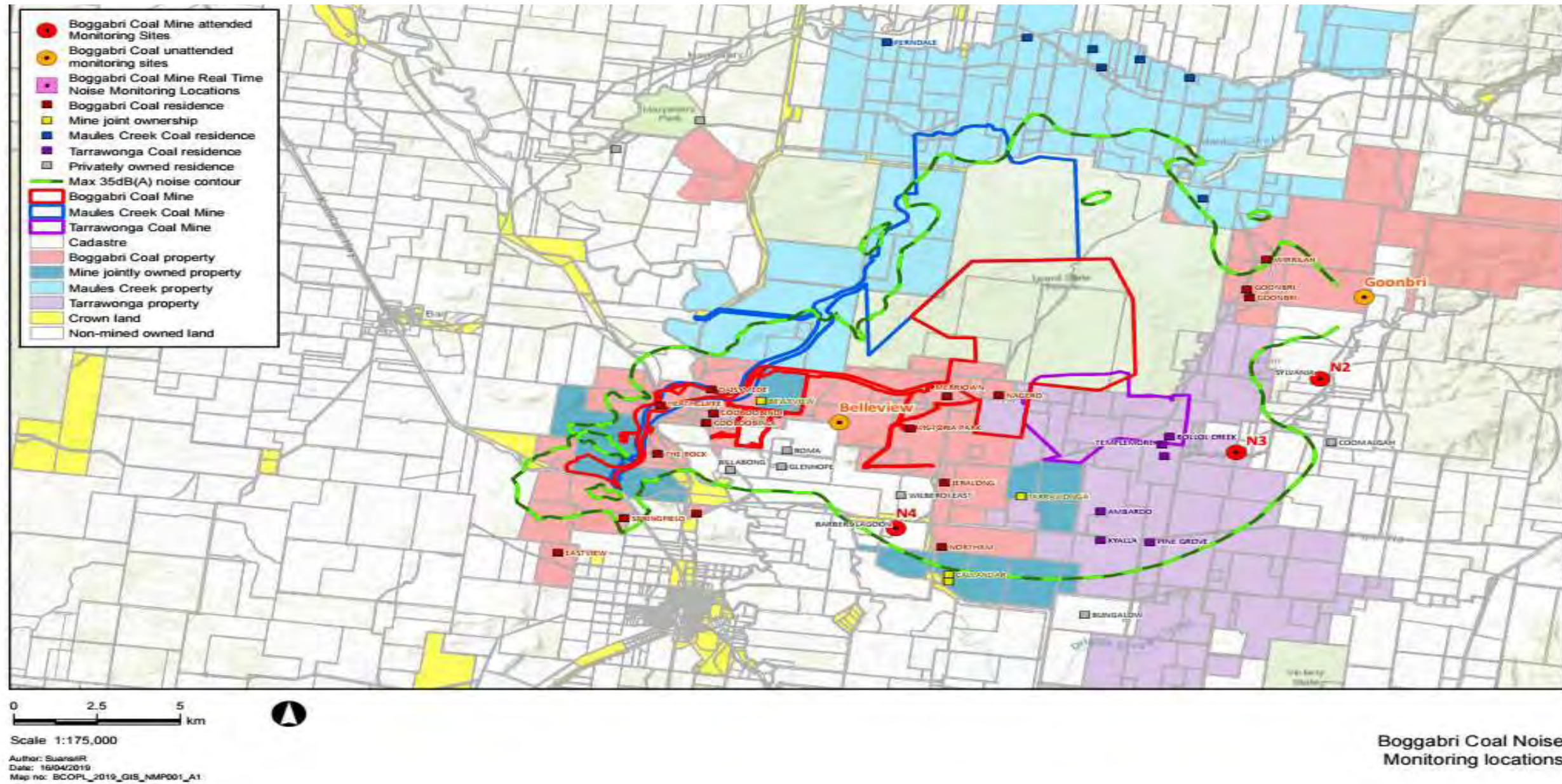


## Blast Monitoring

---

The blast was initiated at the Project at 3:05pm on 21 August 2019 which resulted in a peak overpressure level of 123dB<sub>L</sub> at the Wilberoi East monitor, located in front of the face of the blast, approximately 10km to the southwest. The Goonbri East blast monitor, which was located behind the face of the blast, approximately 7.3km to the east, recorded a level of 103.6dB<sub>L</sub>. It is understood that when considering the distance and orientation of the blast face, the peak overpressure level expected at the Wilberoi East blast monitor would be approximately higher than the level behind the face (i.e. at the Goonbri East monitor), and would be in the order of 110dB<sub>L</sub>. An Independent review found that a combination of short-lived atmospheric conditions at the time of the blast are the most plausible cause of the elevated level recorded at the Wilberoi East blast monitor.

# Attended Noise Monitoring



# Attended Noise Monitoring

---

Monthly monitoring conducted in November & December 2019 and January 2020.

## Night-time monitoring

Carried out in accordance with requirements of the EPL and Australian Standards

There were no exceedances of EPL or Project Approval criteria during the monitoring.

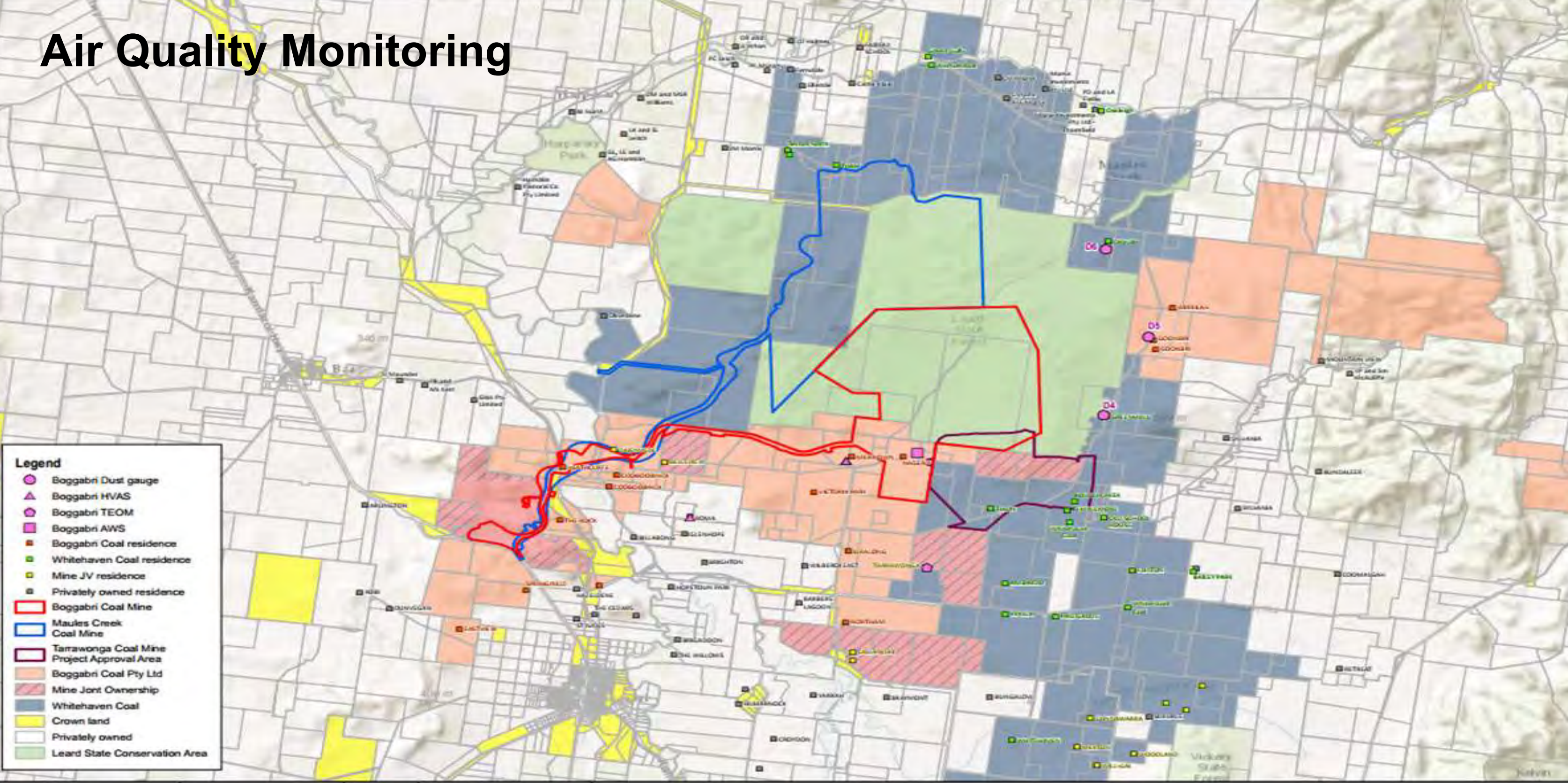
# Attended Noise Monitoring Results – 2019/20.

Attended Noise monitoring	LAeq, 15min Impact Assessment Criterion	Feb- 19	Mar- 19	Apr- 19	May- 19	Jun- 19	Jul- 19	Aug- 19	Sep- 19	Oct- 19	Nov- 19	Dec- 19	Jan-20
Sylvania	35	IA	IA	IA	<20	IA	IA	IA	IA	IA	IA	IA	IA
Picton	35	IA	IA	IA	IA	IA	IA	<30	IA	IA	IA	IA	IA
Barbers Lagoon	35	<30	IA	<25	<25	IA	IA	IA	IA	NM	IA	IA	IA

IA: no site noise was audible at the monitoring location



NM: Some site noise was audible but could not be quantified.

# Air Quality Monitoring



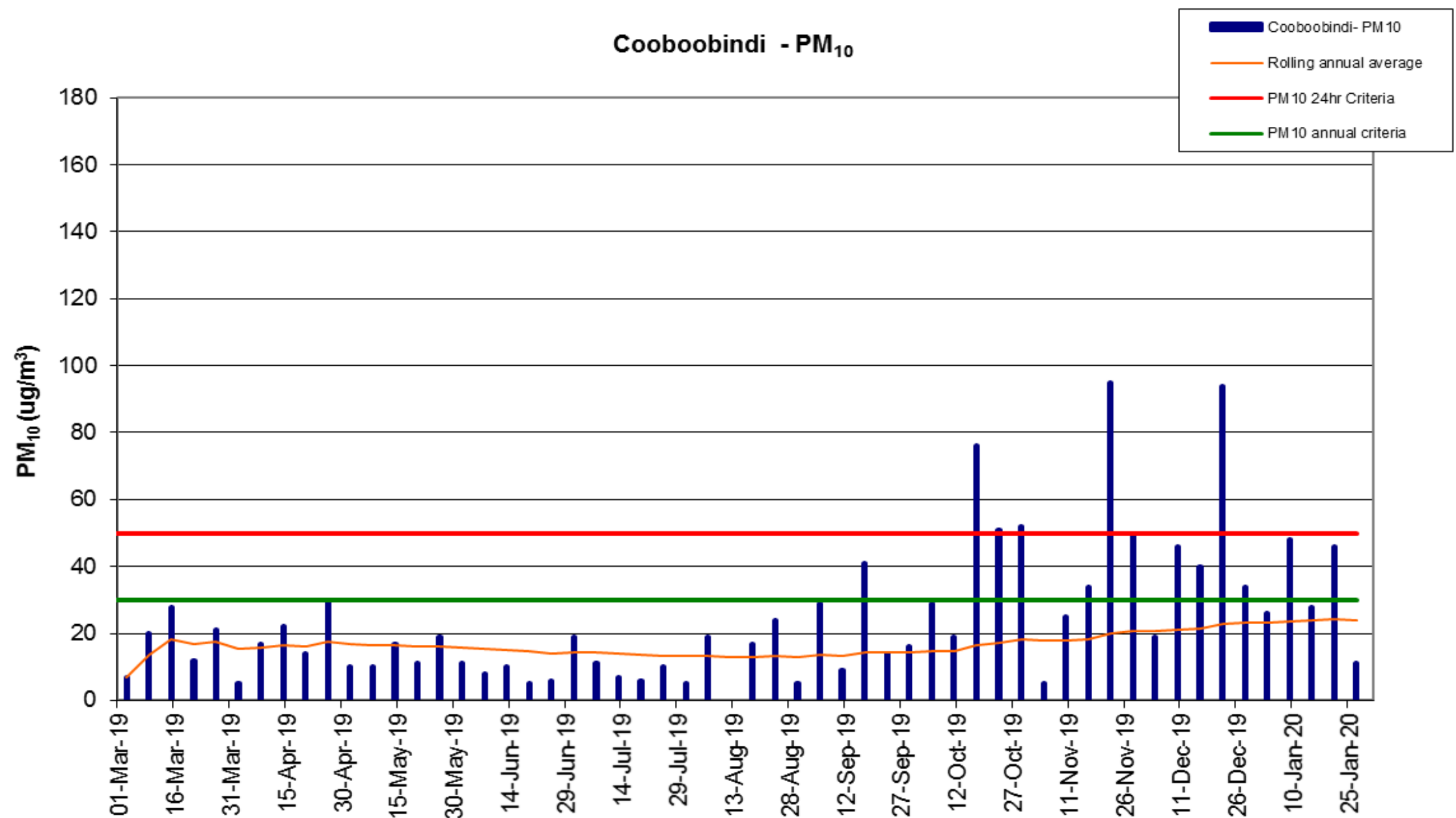
**Legend**

- ◉ Boggabri Dust gauge
- ▲ Boggabri HVAS
- ⦿ Boggabri TEOM
- ◉ Boggabri AWS
- 🏠 Boggabri Coal residence
- 🏠 Whitehaven Coal residence
- 🏠 Mine JV residence
- 🏠 Privately owned residence
- ▭ Boggabri Coal Mine
- ▭ Maulers Creek Coal Mine
- ▭ Tarrawonga Coal Mine Project Approval Area
- ▭ Boggabri Coal Pty Ltd
- ▭ Mine Joint Ownership
- ▭ Whitehaven Coal
- ▭ Crown land
- ▭ Privately owned
- ▭ Lead State Conservation Area

Map: 2200545A_GIS_F021_A1	Author: SuansriR		
Date: 15/11/2016	Approved by: -		
<small>Data sources: Esri, HERE, DeLorme, Intermap, increment P Corp., GEBCO, USGS, FAO, NPS, NRCAN, EsriBearing, IGN, Kantamir NL, Deutsche Survey, Carlsberg, VETI, Carlsberg (Hong Kong), EsriBearing, MapmyIndia, © OpenStreetMap contributors, and the GIS User Community</small>		<small>Coordinate system: GDA 1994 MGA Zone 56 Scale ratio correct when printed at A3</small>	



# Air Quality Monitoring

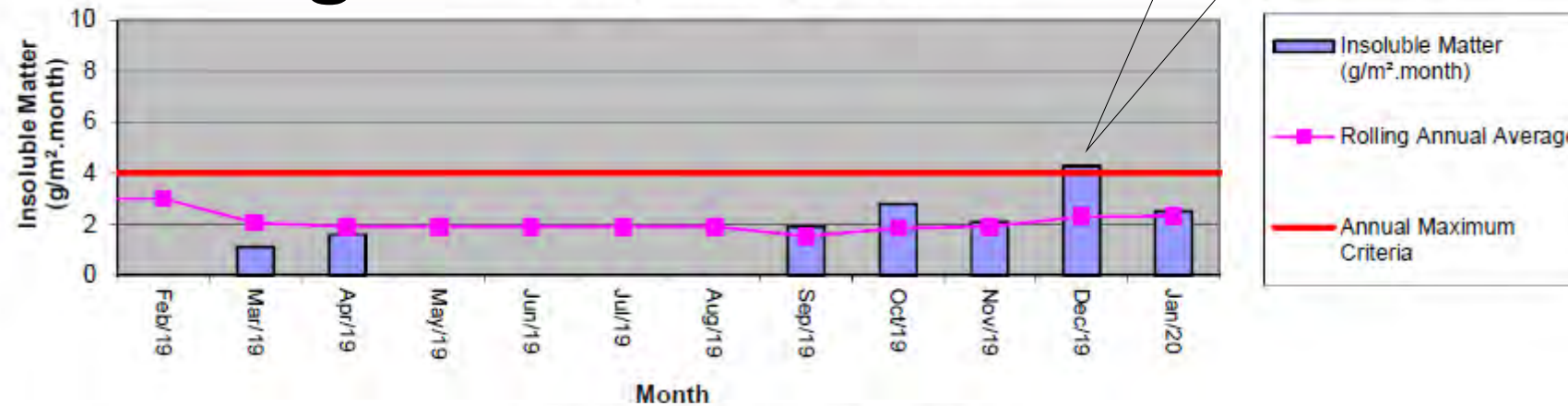


Widespread smoke and dust storms significantly affected air quality levels throughout the State, particularly during the bushfire emergency period from late October 2019.

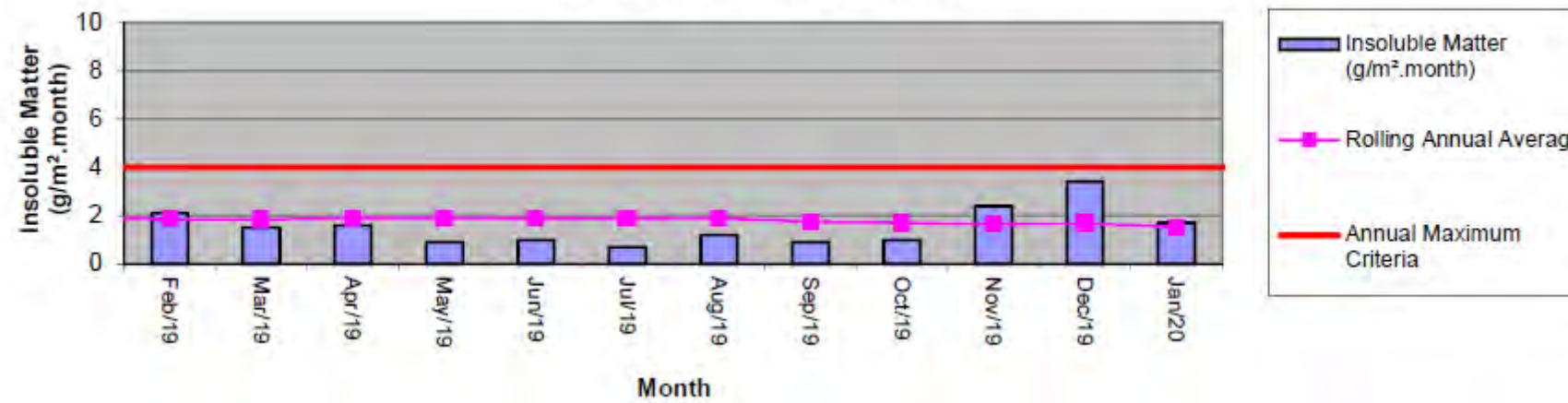


# Air Quality Monitoring

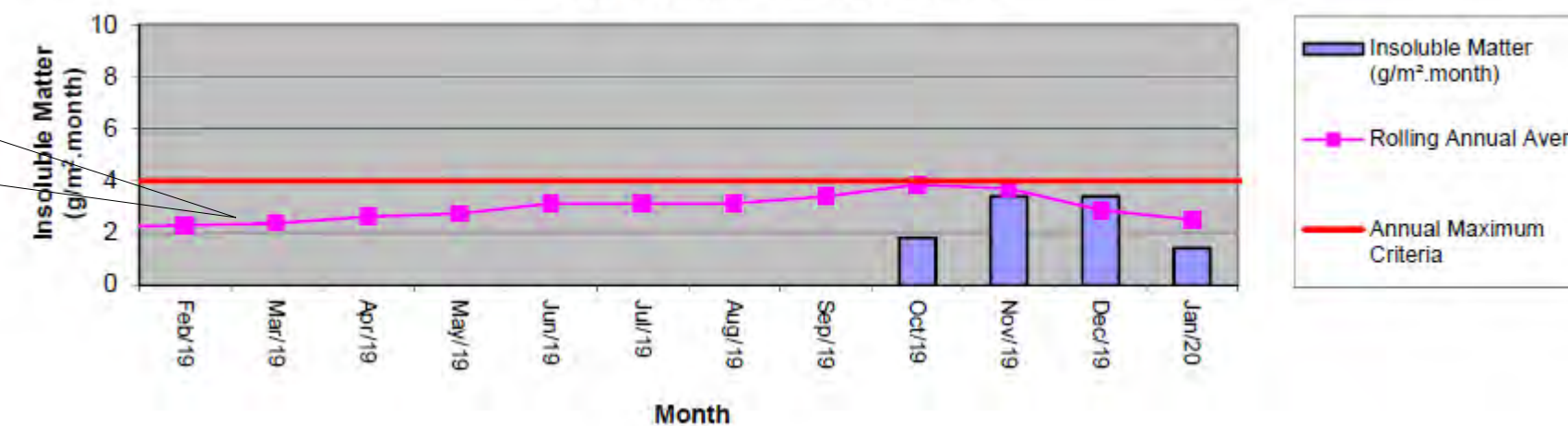
Dust Deposition Gauge D4 - Greenhills



Dust Deposition Gauge D5 - Goonbri

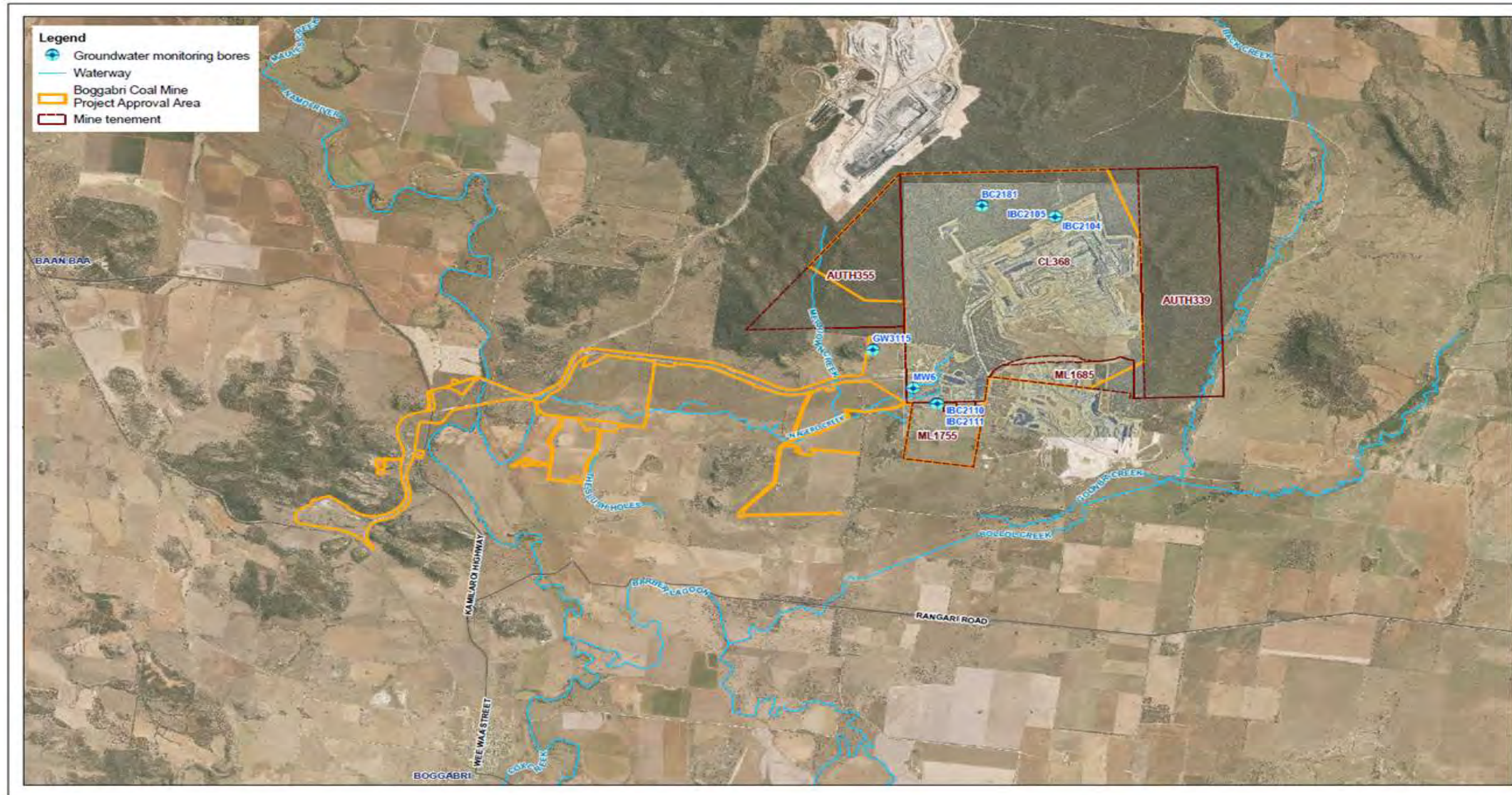


Dust Deposition Gauge D6 - Onavale



January – September significant contamination from bird droppings

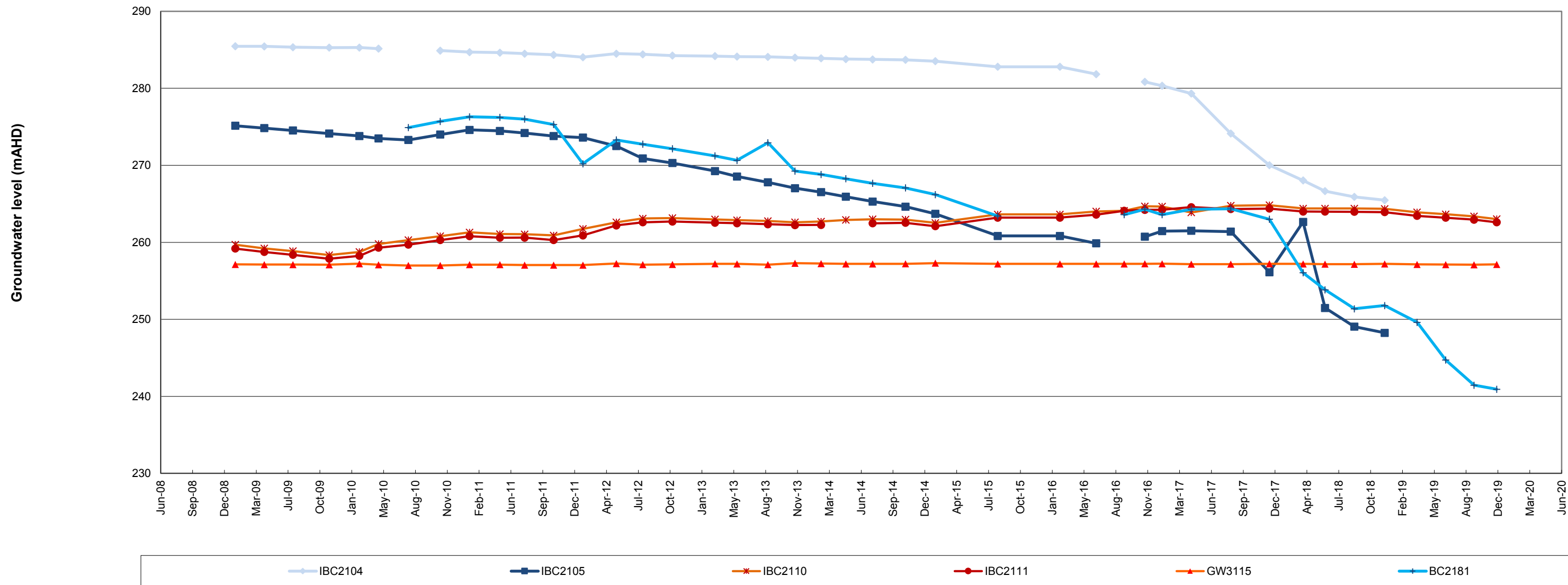
# Groundwater monitoring



Blue represents bores in the hard rock aquifer.

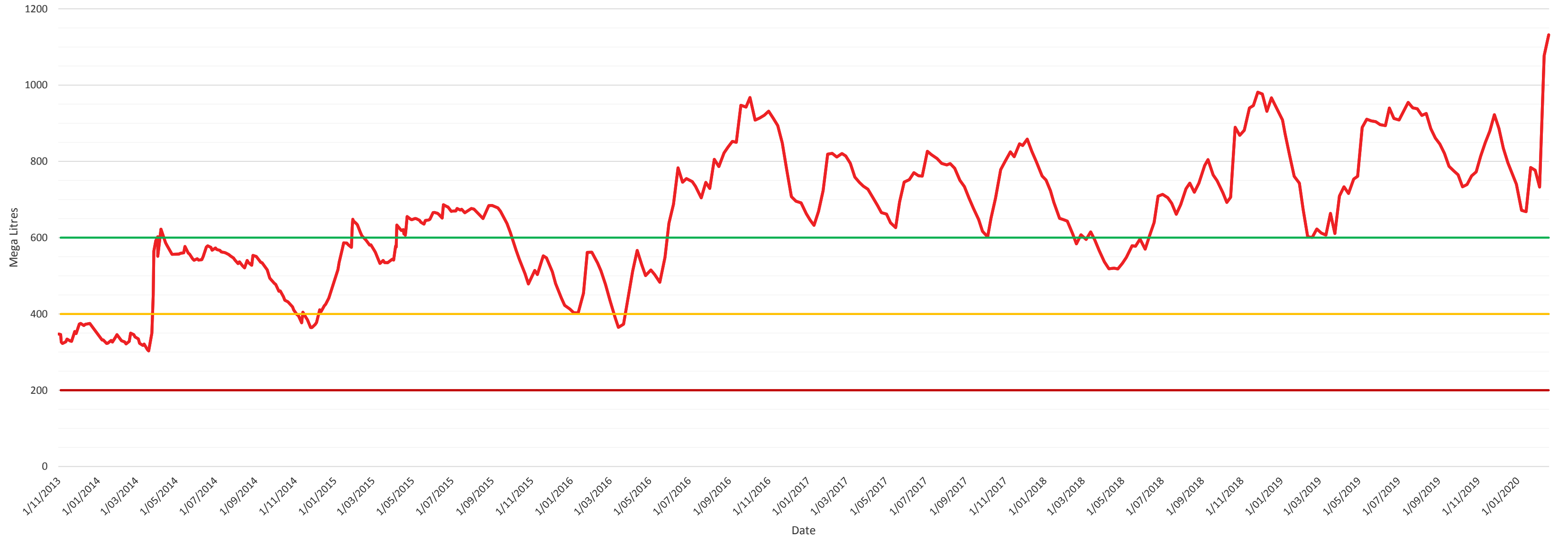
Red represents bores in the alluvium.

# Groundwater Monitoring



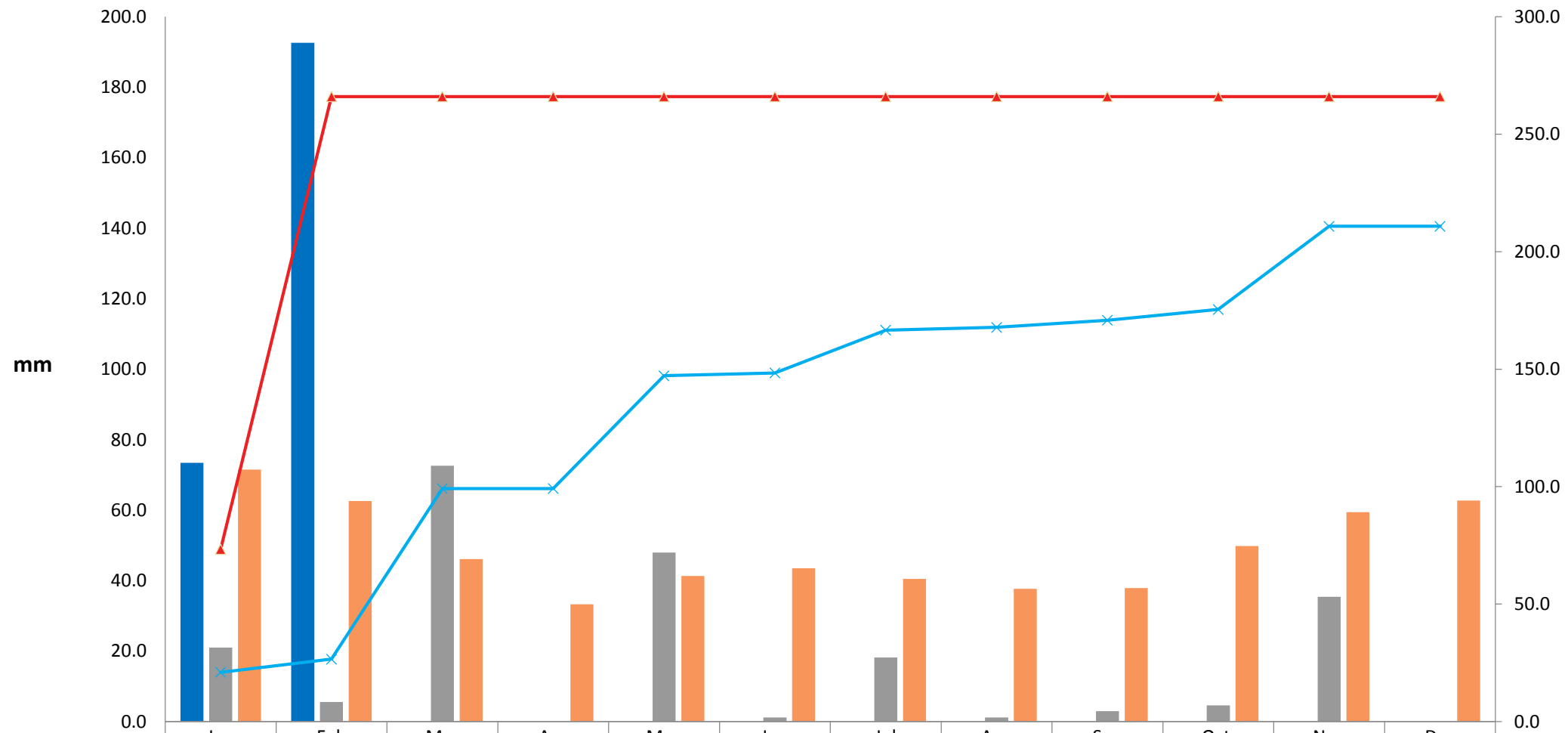
# Water storage on site

Site Water Storage



As of 19<sup>th</sup>  
February  
2020

### YTD Rainfall 2020



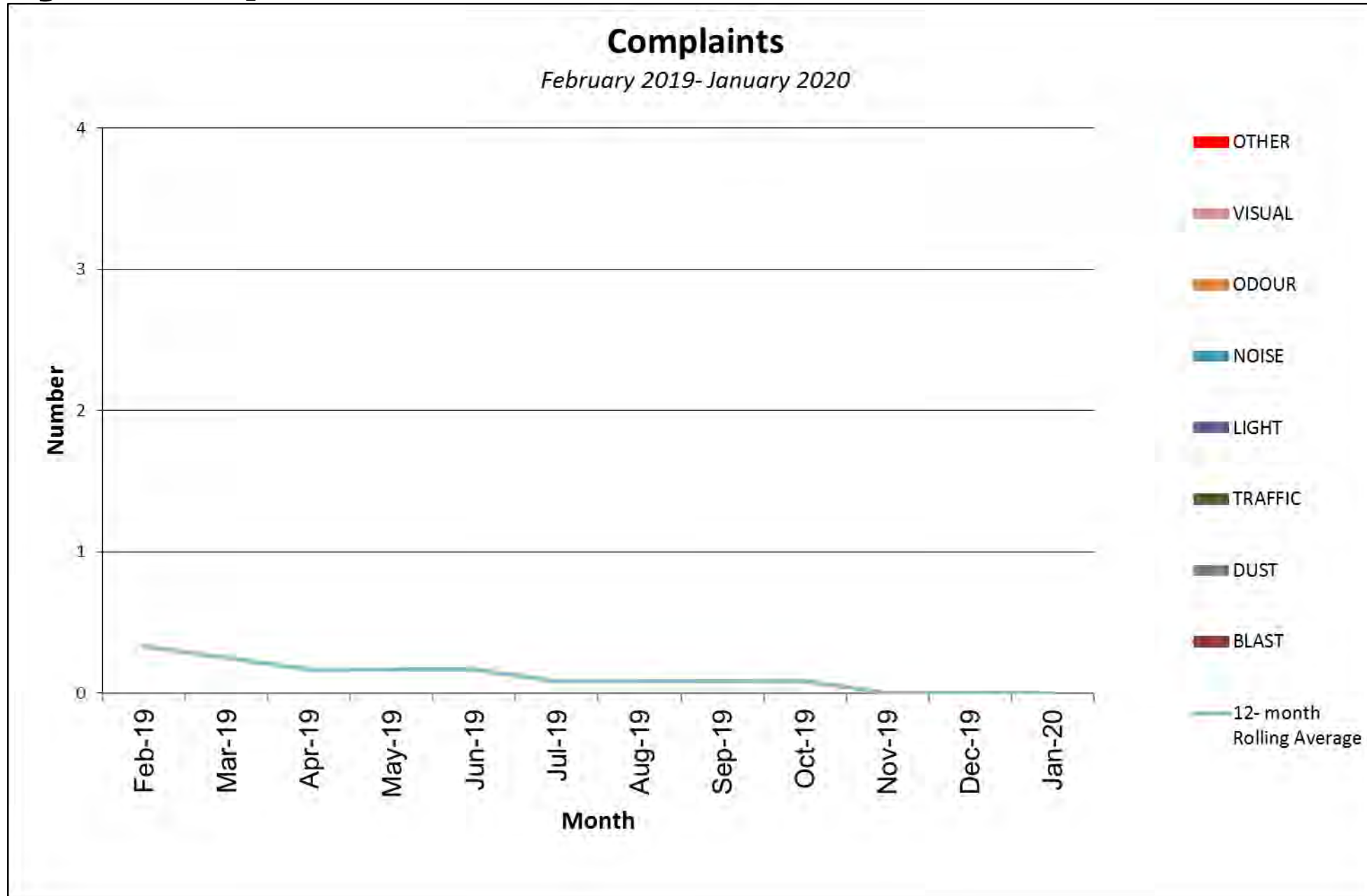
	Jan	Feb	Mar	Apr	May	Jun	Jul	Aug	Sep	Oct	Nov	Dec
Month to Date	73.4	192.6										
Historical Site Data 2019	21.0	5.6	72.6	0.0	48.0	1.2	18.2	1.2	3.0	4.6	35.4	0.0
Historical Average (Boggabri Post Office)	71.5	62.6	46.1	33.3	41.3	43.5	40.5	37.7	37.9	49.8	59.4	62.7
Year to Date Cumulative	73.4	266.0	266.0	266.0	266.0	266.0	266.0	266.0	266.0	266.0	266.0	266.0
Historical Site Data 2019 Cumulative	21.0	26.6	99.2	99.2	147.2	148.4	166.6	167.8	170.8	175.4	210.8	210.8

# Community complaints/feedback

---

Nil complaints

# Community Complaints



End

