



Boggabri Coal Operations Pty Ltd

EPBC 2009/5256

ANNUAL COMPLIANCE REPORT

REPORTING PERIOD: 4 FEBRUARY 2024 TO 3 FEBRUARY 2025, 11TH YEAR.

PUBLISH DATE 3 MAY 2025

Reporting and Auditing Condition 28; Within three months of every 12 month anniversary of the commencement of new mining activities, the person taking the action must publish a report on their website addressing compliance with each of the conditions of this approval, including implementation of any plans as specified in the conditions. Documentary evidence providing proof of the date of publication and non-compliance with any of the conditions of this approval must be provided to the department at the same time as the compliance report is published. The person taking the action must also notify any non-compliance with this approval to the department in writing within two business days of becoming aware of the non-compliance. Note: Department of Agriculture, Water and Environment (DAWE) granted approval (30th May 2014) to submit the report on the 3rd May each year.

Prepared by:	Susie Pym
--------------	-----------

Approved by:	Alex Williams
--------------	---------------

TABLE OF CONTENTS

1. DECLARATION OF ACCURACY.....	3
2. DESCRIPTION OF ACTIVITIES	4
3. NEW ENVIRONMENTAL RISKS.....	5
4. APPENDIX A EPBC APPROVAL CONDITIONS AND COMPLIANCE TABLE	6

1. DECLARATION OF ACCURACY

Declaration of accuracy

In making this declaration, I am aware that sections 490 and 491 of the *Environment Protection and Biodiversity Conservation Act 1999* (Cth) (EPBC Act) make it an offence in certain circumstances to knowingly provide false or misleading information or documents. The offence is punishable on conviction by imprisonment or a fine, or both. I declare that all the information and documentation supporting this compliance report is true and correct in every particular. I am authorised to bind the approval holder to this declaration and that I have no knowledge of that authorisation being revoked at the time of making this declaration.

Signed Stewart Dunlop
065B3C5CF1C7AA247F02E09C9333B6EC readySign

Full name (please print) Stewart Dunlop

Position (please print) G e n e r a l M a n a g e r

Organisation (please print including ABN/ACN if applicable) 76 600 191 455

Date 02/05/2025

2. DESCRIPTION OF ACTIVITIES

Boggabri Coal Mine (BCM or the project) is an open cut coal mine located 15 kilometres (km) north-east of the township of Boggabri in north-western New South Wales (NSW). BCM is managed by Boggabri Coal Operations Pty Ltd (BCOPL), a subsidiary of Idemitsu Australia Resources Pty Limited (Idemitsu).

Mining activities at BCM commenced in 2006. Approval was granted for the Boggabri Coal Mine Extension (EPBC 2009/5256) on 11 February 2013 under Section 130(1) and 133 of the *Environment Protection and Biodiversity Conservation Act 1999* (EPBC Act). The approval is subject to several conditions imposed by the then Minister for Sustainability, Environment, Water, Population and Communities. The Department has since been renamed as the Department of Climate Change, Energy, the Environment and Water.

The mine currently operates under State Significant Development (SSD) Project Approval (SSD 09_0182), which allows BCOPL to produce 8.6 million tonnes per annum (Mtpa) of run-of-mine (ROM) coal from BCM until the end of 2036. Approval was granted by the NSW Planning Assessment Commission (PAC) under Part 3A of the *Environmental Planning and Assessment Act 1979* (EP&A Act) on 18 July 2011 and has been subject to several modifications.

Commonwealth approval for Modification 8 to SSD 09_0182 (EPBC 2021/8875) was granted for the BCM on 19 December 2024. EPBC 2021/8875 relates to mining operations that occur below the Merriown Coal seam. Mining operations below the Merriown Coal seam have not commenced. EPBC 2021/8875 reporting will commence in 2026 following the commencement of the approved action.

3. NEW ENVIRONMENTAL RISKS

No new environmental risks or non-compliances were identified during the reporting period. BCOPL are commissioning a baseline study of all offsets in 2025 to identify risks to biodiversity values and to inform the revision of current documents. Any risks identified in the baseline study will be assessed and strategies will be developed to mitigate any harms.

4. APPENDIX A EPBC APPROVAL CONDITIONS AND COMPLIANCE TABLE

CONDITION NUMBER	CONDITION	IS THE PROJECT COMPLIANT WITH THIS CONDITION?	EVIDENCE/COMMENTS
Disturbance Areas			
1.	The person taking the action must not clear more than 82 ha of the EPBC listed White Box—Yellow Box—Blakely's Red Gum Grassy Woodland and Derived Native Grassland critically endangered ecological community within the Boggabri extension project area identified in Attachment A of these conditions.	Compliant	During the reporting period the project has impacted approximately 3.04 ha of the EPBC listed White Box-Yellow Box-Blakely's Red Gum Grassy Woodland and Derived Native Grassland Critically Endangered Ecological Community. This equates to 33.35 ha at year end 2024. As per memo PS224203-NTL-ECO-LTR-001 Rev A.
2.	The person taking the action must not clear more than 650 ha of known native vegetation communities and/or potential habitat for the regent honeyeater (<i>Anthochaera Phrygia</i> - formally <i>Xanthomyza phrygia</i>), swift parrot (<i>Lathamus discolor</i>) and greater long-eared bat (<i>Nyctophilus corbeni</i>), within the Boggabri extension project area identified in Attachment A of these conditions, to the extent that it is not inconsistent with the requirement to retain the biodiversity corridor required under condition 3. The 650 ha of native vegetation communities specified includes the 82 ha of the critically endangered ecological community at condition 1.	Compliant	During the reporting period the project has cleared approximately 11.62 ha of habitat for the Regent Honeyeater, Swift Parrot, and Greater Long-eared Bat. This equates to 241.43 ha at year end 2024. As per memo PS224203-NTL-ECO-LTR-001 Rev A.

CONDITION NUMBER	CONDITION	IS THE PROJECT COMPLIANT WITH THIS CONDITION?	EVIDENCE/COMMENTS
3.	<p>The person taking the action must submit a Biodiversity Corridor Plan for the approval of the Minister within three months of the date of this approval. The plan must address the following matters:</p> <ol style="list-style-type: none"> a. protection of native vegetation of a total width of 500 metres (m) where the Boggabri coal mine lease boundary is adjacent to the Maules Creek coal mine lease boundary; b. maintenance in perpetuity of this area as a biodiversity corridor; and c. evidence that the biodiversity corridor will be protected in perpetuity through a legal mechanism that would provide the equivalent protection of a conservation covenant. <p>The approved Biodiversity Corridor Plan must be implemented.</p>	Compliant	<p>The Biodiversity Corridor Plan (BCP) was submitted to the Minister for approval on 10th May 2013. The Department of Agriculture, Water and Environment (DAWE) provided comments on the plan on 8th February 2016.</p> <p>In consultation with DCCEE, BCOPL submitted the revised BCP in July 2022.</p>
4.	<p>The person taking the action is required to submit a Conservation and Biodiversity Bond under condition 52 of the NSW state government project approval dated 18 July 2012 (application number 09_0182). It is noted that this bond may be combined with the rehabilitation security deposit as required by the NSW Trade and Investment - Division of Resources and Energy under the NSW <i>Mining Act 1992</i>. The person taking the action must submit details of this bond and the rehabilitation security deposit, to the Minister. If the Minister is not satisfied that the bond and the rehabilitation security deposit lodged by the person taking the action is adequate to provide for the implementation of the requirements referred to under conditions 3, 12, 21-23 the Minister may require the person taking the action to establish an additional bond or equivalent</p>	Not Applicable	<p>The NSW Department of Planning Industry and Environment (DPIE) granted an extension for the submission of the revised Biodiversity Management Plan to 2 October 2015.</p> <p>The revised Biodiversity Management Plan (BMP) was approved by DPIE on 2 July 2019.</p> <p>BCOPL have been granted an extension until 31 December 2025 by DPIE and</p>

CONDITION NUMBER	CONDITION	IS THE PROJECT COMPLIANT WITH THIS CONDITION?	EVIDENCE/COMMENTS
	financial instrument in trust, under conditions approved in writing by the Minister .		DCCEEW to finalise arrangements for biodiversity offsets for the Boggabri Coal Mine.
5.	<p>The person taking the action must submit to the Minister for approval, within three months of the commencement of the action, an approach that:</p> <ul style="list-style-type: none"> a. limits the maximum project area disturbance (in hectares) specified for each of the years 5, 10, 15 and 21 from the date of this approval of the White Box—Yellow Box—Blakely's Red Gum Grassy Woodland and Derived Native Grassland ecological community and habitat or potential habitat for the regent honeyeater, swift parrot and greater long-eared bat; b. incorporates an analysis, undertaken by independent ecological experts approved by the department, that demonstrates the maximum disturbance limits which will minimise any impacts on relevant matters of national environmental significance; c. demonstrates collaboration with the person taking the action to develop and operate the Maules Creek Coal Project (EPBC 2010/5566), in order to minimise progressive project area disturbance limits across both sites. The progressive disturbance limits are to be reflected in the development of the Leard Forest Mining Precinct Biodiversity Strategy. 	Compliant	<p>The initial approach was submitted within the required timeframe on 21 February 2014 and approved by the DAWE on 30 May 2014.</p> <p>A subsequent letter was submitted to the Minister on 5 February 2016 outlining the revised staged clearing proposal (Land Disturbance Approach), in addition to that approach described in the letter submitted to the Minister dated 3 December 2014 (condition 5a).</p> <p>An ecological analysis (condition 5b) was prepared by independent ecological consultants (Parsons Brinckerhoff) in a memo provided to the Minister dated 4 March 2016.</p> <p>Compliance with condition 5c is demonstrated through the steering group meeting minutes for development of the</p>

CONDITION NUMBER	CONDITION	IS THE PROJECT COMPLIANT WITH THIS CONDITION?	EVIDENCE/COMMENTS
			<p>Learld Forest Mining Precinct Biodiversity Strategy. The Stage 1 Learld Forest Mining Precinct Biodiversity Strategy scoping report was approved by the Secretary on 13 May 2013 and provided to DAWE. The Stage 2 strategy report was approved by the Secretary on 1 September 2017.</p> <p>BCOPL revised the disturbance limits approach with 2117317A-MEM-002-RevA EPBC Clearing Limits Memo, which was subsequently approved by DAWE on 11 February 2022. This reassessment was consulted with Maules Creek Coal Mine.</p> <p>The Stage 3 strategy report is currently being drafted to be submitted to DPHI in late 2025.</p>
6.	The person taking the action must not clear more than the maximum Boggabri extension project area disturbance limits specified for each of the years 5, 10, 15 and 21, as described in condition 5a, unless otherwise approved in writing by the Minister .	Compliant	BCOPL are in year 10 of the clearing activities and within the revised disturbance limit for year 10.

CONDITION NUMBER	CONDITION	IS THE PROJECT COMPLIANT WITH THIS CONDITION?	EVIDENCE/COMMENTS
			BCOPL revised the disturbance limits approach with 2117317A-MEM-002-RevA EPBC Clearing Limits Memo, which was subsequently approved by DAWE on 11 February 2022.
Offset areas Mechanism to secure offsets			
7.	<p>The person taking the action must register a legally binding conservation covenant over the offset areas of 5866.1 ha of 'equivalent or better' quality of threatened species habitat defined as native vegetation communities. This must include no less than 1537.4 ha 'equivalent or better' quality of White Box—Yellow Box—Blakely's Red Gum Grassy Woodland and Derived Native Grassland ecological community.</p> <p>The offset areas are those defined at Attachment B of these conditions, or alternative areas agreed in writing by the Minister.</p>	Not Applicable	Refer to condition 8 below.
8.	<p>The conservation covenant(s) required under condition 7 must provide protection in perpetuity for the offset area and be registered by 15 December 2022. Progress in achieving this must be reported annually as part of the annual reporting to the Department required under condition 28.</p> <p>Evidence of compliance with condition 8 must be provided to the Department within 30 days of registering a legally binding covenant.</p>	Not Applicable	<p>BCOPL has lodged applications and is actively engaged with the relevant departments to establish conservation agreements for the offset area.</p> <p>BCOPL have been granted an extension until 31 December 2025 by DCCEEW to</p>

CONDITION NUMBER	CONDITION	IS THE PROJECT COMPLIANT WITH THIS CONDITION?	EVIDENCE/COMMENTS
			finalise arrangements for biodiversity offsets for the Boggabri Coal Mine.
9.	<p>The person taking the action must verify through an independent review by 30 December 2013, the quantity and quality of habitat or potential habitat for the regent honeyeater, swift parrot and greater long-eared bat of all proposed offset areas. The review will:</p> <ul style="list-style-type: none"> a. validate the quantity, quality, and ecological characteristics of the offset areas in line with the requirements of the department's <i>Environment Protection and Biodiversity Conservation Act 1999</i> Environmental Offsets Policy October 2012 b. be undertaken by ecological experts who have been agreed in writing by the department 	Compliant	<p>The independent review was completed by ecological experts from Niche Environment and Heritage and approved by the department. The report dated 22 December 2013 was submitted to DAWE in January 2014.</p> <p>The report concluded that BCOPL's offset areas fulfill the total direct offset areas required under the Environment Protection and Biodiversity Conservation Act 1999, Environmental Offsets Policy October 2012.</p>
10.	<p>If the independent review finds that the minimum quantities of threatened species habitat and ecological community required under condition 7 do not meet the 'equivalent or better' quality, or the criteria required under condition 9a, then additional areas must be protected until all the relevant criteria under condition 9 are met.</p> <p>Note: the 1537.4 ha of White Box Yellow Box Blakely's Red Gum Grassy Woodland and Derived Native Grassland ecological community may be inclusive of the 5866.1 ha of habitat for the woodland species, as long as it meets the listing criteria for the EPBC-listed critically endangered ecological community as defined in the EPBC listing advice for that community and</p>	Not Applicable	<p>The Independent review by Niche Environment and Heritage confirmed that no additional areas were required, and this was accepted by the DAWE.</p>

CONDITION NUMBER	CONDITION	IS THE PROJECT COMPLIANT WITH THIS CONDITION?	EVIDENCE/COMMENTS
	the quantity and quality is validated through the independent review.		
11.	<p>If the person undertaking the action proposes to undertake any action within the offset areas secured under condition 7, other than those management activities related to managing the offset areas or as set out in the condition's approval, then approval to undertake that action must be obtained in writing from the Minister. In seeking the Minister's approval, the person undertaking the action must provide a detailed assessment of the area where the action is proposed to take place and an assessment of all associated adverse impacts on matters of national environmental significance. If the Minister agrees to the action within the offset areas, the area identified for the action must be excised from the proposed offset area and alternative offsets secured by the person taking the action (subject to this approval) at a ratio of at least 20:1 in relation to the impact on matters of national environmental significance</p>	Not Applicable	No actions (other than management activities) have been undertaken in the offset areas proposed to be secured under condition 7.
Offset management plan			
12.	<p>To offset the impacts to the White Box—Yellow Box—Blakely's Red Gum Grassy Woodland and Derived Native Grassland and the habitat of the Regent Honeyeater, Swift Parrot and Greater Long-eared Bat, the person taking the action must submit to the Minister for approval an Offset management plan for all of the offset areas, specified in condition 7, within 6 months of the date of this approval. The approved Offset management plan must be implemented prior to the commencement of new mining operations</p> <p>Note: for consistency, the person taking the action may develop a Biodiversity Management plan that includes the requirements set for managing offsets as set out in these conditions, to align with the requirements of the NSW state government Project Approval dated 18 July</p>	Non-Compliant	The Offset Management Plan (OMP) is compliant with this condition however, the plan was not approved by DAWE until 2020. The current OMP is being implemented and can be observed on site and through a review of annual monitoring reports.

CONDITION NUMBER	CONDITION	IS THE PROJECT COMPLIANT WITH THIS CONDITION?	EVIDENCE/COMMENTS
	2012 (application number 09_0182) and this approval.		
13.	<p>The Offset management plan must include, but not be limited to, the following information:</p> <ul style="list-style-type: none"> a objectives to clearly identify baseline conditions of the offset sites, establish performance indicators and discuss methods for adaptive management. b a text description and map to clearly define the location and boundaries of the offset areas. This must be accompanied by the offset attributes and shapefiles. c. a detailed survey and description (prior to any management activities, hence a baseline) of the current condition of the extant vegetation of each offset area. This must be consistent with the State and Transition Model, including but not limited to: <ul style="list-style-type: none"> i. location of survey points (GPS reference) ii. vegetation condition mapping iii. photo reference points iv. tree age class representation v. percentage tree canopy cover vi. number of native plant species in ground layer vii. percentage of nativeness of total plant groundcover (herbaceous plants and small shrubs, 1 m tall), measured 	Compliant	The Offset Management Plan contains the required information and was approved by DAWE in 2020.

CONDITION NUMBER	CONDITION	IS THE PROJECT COMPLIANT WITH THIS CONDITION?	EVIDENCE/COMMENTS
	<p>using basal area</p> <ul style="list-style-type: none"> viii. description of fauna habitat including condition, type and connectivity ix. surveys of the regent honeyeater, swift parrot and greater long-eared bat <p>d. Plans to improve upon the baseline condition (identified in the surveys required by condition 13c) consistent with the State and Transition Model, EPBC listing advice, and threatened species habitat defined as native vegetation communities, including but not limited to:</p> <ul style="list-style-type: none"> i. a map showing areas to be managed ii. management actions for each area and details of management methods to be used iii. timing of management activity for each area iv. performance criteria for each area v. a set of measurable ecological indicators for detecting changes to the White Box—Yellow Box—Blakely's Red Gum Grassy Woodland and Derived Native Grassland Ecological Community, including those that may be ascribed to ongoing water stress vi. a monitoring plan to assess the success of the management activities measured against the baseline condition. The monitoring must be statistically robust and able to quantify 		

CONDITION NUMBER	CONDITION	IS THE PROJECT COMPLIANT WITH THIS CONDITION?	EVIDENCE/COMMENTS
	<p>change in the condition of White Box—Yellow Box—Blakely's Red Gum Grassy Woodland and Derived Native Grassland Ecological Community. This should include, but not be limited to, control sites and periodic ecological surveys to be undertaken by a qualified ecologist</p> <ul style="list-style-type: none"> vii. a description of the potential risks to successful management against the performance criteria, and a description of the contingency measures that would be implemented to mitigate these risks viii. a process to report, to the department, the progress of management activities undertaken in the offset areas and the outcome of those activities, including identifying any need for improved management and activities to undertake such improvement ix. details of the various parties responsible for management, monitoring and implementing the management activities, including their position or status as a separate contractor 		
14.	<p>Unless otherwise agreed to in writing by the department, the baseline surveys (identified in the surveys required by condition 13c) must be conducted in accordance with the department's Survey guidelines for Australia's threatened birds and the survey guidelines for Australia's threatened bats. Subsequent monitoring must be carried out annually at the same time of year as the baseline surveys each year unless otherwise agreed to in writing by the</p>	Compliant	<p>Appendix C of the approved Offset Management Plan includes the Offsets Baseline Survey Report which notes that baseline surveys were performed using these guidelines. Since baseline monitoring occurred during spring 2015,</p>

CONDITION NUMBER	CONDITION	IS THE PROJECT COMPLIANT WITH THIS CONDITION?	EVIDENCE/COMMENTS
	department.		subsequent years have occurred during the same season and are reported annually in Biodiversity Offset Monitoring Reports.
Surface and groundwater management plans			
15.	The person taking the action must provide to the Minister for approval, the <i>surface and groundwater management plans</i> as identified in condition 38 of the NSW state government Project Approval dated 18 July 2012 (application number 09_0182). The <i>surface and groundwater management plans</i> approved by the Minister must be implemented prior to the commencement of new mining operations .	Non-Compliant	Surface and Groundwater management plans were submitted to DAWE in early 2013 and approved by DAWE on the 10 June 2014. The management plans were not approved prior to the commencement of new mining activities on the 3 February 2014. The Surface Water Management Plan and Groundwater Management Plan have been revised and submitted to the State Government for consultation in early 2024.
16.	The <i>surface and groundwater management plans</i> must be consistent with the National Water Quality Management Strategy.	Compliant	The Surface and Groundwater Management Plans are consistent with the National Water Quality Management Strategy and have been approved by the DAWE.

CONDITION NUMBER	CONDITION	IS THE PROJECT COMPLIANT WITH THIS CONDITION?	EVIDENCE/COMMENTS
17.	<p>The person taking the action must within 6 months of this approval, in collaboration with the person taking the action to develop and operate the Maules Creek Coal Project (EPBC 2010/5566) and any other approved mines within 20 km of the mine site provide written advice to the Minister demonstrating how the approved surface and groundwater management plans (specified in condition 15), addresses the cumulative impact of groundwater drawdown as a result of mining and how this may impact on the consequent health of the remnant native vegetation in the Leard State Forest, the Leard State Conservation Area and surrounding areas. In particular the advice must address the following matters:</p> <ol style="list-style-type: none"> a. maximum amount of allowable drawdown in the alluvial aquifer b. drawdown in hard rock aquifer c. trigger levels pertaining to drawdown in the alluvial aquifer when corrective actions will be required to be undertaken d. identify the depth of root zone of the native vegetation e. monitoring to assess the ongoing quality and quantity of both surface and groundwater to identify impacts on the native vegetation. 	Compliant	<p>Refer to Condition 15. In accordance with Schedule 3, Condition 38 of the NSW Project Approval, the BTM Complex Water Management Strategy was submitted as part of the Surface and Groundwater management plans and was approved by DAWE 10 June 2014. The BTM Complex Water Management Strategy was revised, and subsequently peer-reviewed prior to submission. Approval was received from DPHI in August 2024.</p>
18.	<p>The person taking the action must within 6 months of the date of this approval, or such other timeframe specified by the Minister, provide to the Minister a report on:</p> <ol style="list-style-type: none"> a. any updated modelling of surface and groundwater impacts that has been undertaken in preparing the <i>surface and groundwater management plans</i> 	Compliant	<p>The Surface Water and Groundwater Management Plans and both plans address groundwater and surface water impacts on native vegetation. DPE</p>

CONDITION NUMBER	CONDITION	IS THE PROJECT COMPLIANT WITH THIS CONDITION?	EVIDENCE/COMMENTS
	b. how the <i>surface and groundwater management plans</i> addressed groundwater and surface water impacts on native vegetation		approved the updated BTM Complex Groundwater Model Update in 2022.
19.	A risk-based assessment of the disposal of mine water by irrigation on soils must be undertaken. The assessment must include the risk of metal and salinity accumulation in soils.	Not Applicable	An irrigation system to dispose of surplus water has not yet been commissioned and BCOPL currently do not plan to dispose of mine water through irrigation. Therefore, a risk-based assessment for this activity is not yet required.
Leard Forest Mining Precinct Regional Biodiversity Strategy			
20.	The person taking the action must implement the regional biodiversity strategy as required under conditions 40-46 of the NSW state government Project Approval dated 18 July 2012 (application number 09_0182). The required scoping report for the development of the strategy must be submitted to the Minister for approval on or before 31 July 2013. The approved strategy must be implemented.	Compliant	The Stage 1 scoping report was approved by the Secretary on 13 May 2013 and provided to DAWE. The Stage 2 strategy report was approved by the Secretary on 1 September 2017. Stage 3 strategy report is being drafted
Mine site rehabilitation			
21.	To mitigate the impacts to the White Box-Yellow Box -Blakely's Red Gum Grassy Woodland and Derived Native Grassland and the habitat of the regent honeyeater, swift parrot and greater long-eared bat, the person taking the action must, within 12 months of commencement of new mining activities , submit to the Minister for approval a <i>Mine site rehabilitation plan</i> for the progressive	Compliant	The commencement of new mining activities occurred the 3 February 2014. The Rehabilitation Management Plan (RMP) was submitted to DAWE within the 12 month time frame in January

CONDITION NUMBER	CONDITION	IS THE PROJECT COMPLIANT WITH THIS CONDITION?	EVIDENCE/COMMENTS
	<p>rehabilitation and revegetation of no less than 650 ha (less the portion included in the biodiversity corridor identified in condition 2) in the Boggabri extension mine site using species consistent with a White Box—Yellow Box—Blakely's Red Gum Grassy Woodland and Derived Native Grassland Ecological Community. This approved <i>Mine site rehabilitation plan</i> must be implemented.</p>		<p>2015. The DPIE requested that BCOPL revise the RMP and a copy of the revised RMP was provided to DAWE on 31 October 2015.</p> <p>Further consultation with DAWE has occurred with revision 8 of the RMP submitted on 2 November 2019 and revision 9, on 20 March 2020. Rev 9 of the RMP was approved by DAWE on 17 June 2020 and is being implemented on site.</p>
22.	<p>The person taking the action must:</p> <ol style="list-style-type: none"> a. rehabilitate the site to be consistent with the proposed rehabilitation strategy as provided in the <i>Environment Assessment</i> and, as required under the NSW state government Project Approval dated 18 July 2012 (application number 09_0182); and b. not replace top soil and sub soil layers at a depth less than the minimum depths determined through pre-stripping soil surveys as described in condition 23c. <p>Note: the NSW state government Project Approval dated 18 July 2012 (application number 09_0182) conditions require pre-stripping soil surveys and inventories to inform the availability, rehandling, stockpiling and management of soils, and maximising the salvaging of soil to be used, in the rehabilitation of the site.</p>	Compliant	<p>Annual Rehabilitation Monitoring Reports demonstrate the implementation of rehabilitation strategy in the Environmental Assessment.</p> <p>Topsoil placement at BCOPL is undertaken in accordance with the Topsoil Placement Quality Assurance Plan (QAP) as appended to the Biodiversity Management Plan within the Soil Management Protocol.</p>

CONDITION NUMBER	CONDITION	IS THE PROJECT COMPLIANT WITH THIS CONDITION?	EVIDENCE/COMMENTS
23.	<p>The <i>Mine site rehabilitation plan</i> must include, at a minimum, the following information:</p> <ul style="list-style-type: none"> a. targets and performance indicators to achieve effective restoration of the native forest and woodlands b. details of the vegetation communities to be rehabilitated and the timing of progressive rehabilitation (commencing as soon as practicable following disturbance) c. detailed soil depth surveys and analysis to inform the effective placement and restoration of soils underlying the proposed rehabilitation sites; including mapping of soils across the disturbance sites and soil sampling at no less than one sample point per 20 ha of each soil type identified. Sampling must identify; type, depth, water holding capacity, structure and physio-chemical properties of each of the soil and subsoil layers. d. processes and methodologies for the removal, storage and re-layering of the top soil and sub soil layers underlying the disturbed sites being prepared for rehabilitation. These processes and methodologies must ensure the replacement of top soil and sub soil layers: <ul style="list-style-type: none"> i. meet the minimum depth requirements determined from sampling outcomes as identified in condition 23c; and, ii. replicates the other existing soil parameters including, but not limited to, soil type, water holding capacity, structure and physio-chemical properties. 	Compliant	The Rehabilitation Management Plan (Rev 9) contains all the requirements of this condition.

CONDITION NUMBER	CONDITION	IS THE PROJECT COMPLIANT WITH THIS CONDITION?	EVIDENCE/COMMENTS
	<ul style="list-style-type: none"> e. criteria to determine success of rehabilitation of native vegetation f. a process to progressively report to the department the rehabilitation management actions undertaken and the outcome of those actions, and the mechanisms to be used to identify the need for improved management g. a description of the potential risks to successful management and rehabilitation on the project site, and a description of the contingency measures that would be implemented to mitigate these risks h. details of long-term management and protection of the mine site. <p>Note: for consistency, the person taking the action may develop a single mine rehabilitation plan to align with the requirements including timing of reports of the NSW state government Project Approval dated 18 July 2012 (application number 09_0182) requirements and this approval. The Offset management plan and the Mine site rehabilitation plan need to be substantially integrated for achieving biodiversity objectives for the rehabilitated mine-site.</p>		
	Final Landform		
24.	<p>The person taking the action must rehabilitate the site consistent with the proposed Rehabilitation Strategy as required under conditions 69, 70, 71 and 72 of the NSW state government Project Approval dated 18 July 2012 (application number 09_0182) such that the final landform provides the optimum opportunity for the successful restoration of native forest and woodland including the critically endangered White Box—Yellow Box— Blakely's Red Gum Grassy Woodland and Derived Native Grassland Ecological Community.</p>	Compliant	<p>The site is being progressively rehabilitated in accordance with the NSW Project Approval requirements. The final Void and Mine Closure Plan under State Condition 72 is not required to be submitted until December 2025.</p>

CONDITION NUMBER	CONDITION	IS THE PROJECT COMPLIANT WITH THIS CONDITION?	EVIDENCE/COMMENTS
25.	<p>The person taking the action must undertake rehabilitation to ensure the final landform minimises the extent of any resulting pit lake, avoids salt scalding and ensures that drained waters do not adversely affect the downstream environment and avoids any impacts on matters of national environmental significance.</p> <p>Note: the NSW state government Project Approval dated 18 July 2012 (application number 09_0182) approval conditions require the preparation and implementation of an updated Final Void and Mine Closure Plan that considers interactions with the adjoining mines, including interaction between final voids, opportunities for integrated mine planning with adjoining mines to minimise environmental impacts, all reasonable and feasible landform options for the final void (including filling) and predicted hydrochemistry and hydrogeology (including long-term groundwater recovery and void groundwater quality).</p>	Not Applicable	The Final Void and Closure Plan is not yet required and will be finalised by December 2025.
Survey data			
26.	<p>All survey data collected for the project must be recorded so as to conform to data standards notified from time to time by the department. When requested by the department, the person taking the action must provide to the department all species and ecological survey data and related survey information from ecological surveys undertaken for matters of national environmental significance. This survey data must be provided within 30 business days of request, or in a timeframe agreed to by the department in writing. The department may use the survey data for other purposes.</p>	Compliant	All survey data collected for the project is recorded to conform to data standards as notified by the department. .
Reporting and auditing			

CONDITION NUMBER	CONDITION	IS THE PROJECT COMPLIANT WITH THIS CONDITION?	EVIDENCE/COMMENTS
27.	Within 14 days after the commencement of new mining activities , the person taking the action must advise the department in writing of the actual date of commencement of new mining activities .	Non-Compliant	BCOPL did not advise the department in writing of the actual date of commencement of new mining activities within the required timeframe. BCOPL notified DAWE of new mining activities on the 26 February 2014.
28.	Within three months of every 12 month anniversary of the commencement of new mining activities , the person taking the action must publish a report on their website addressing compliance with each of the conditions of this approval, including implementation of any plans as specified in the conditions. Documentary evidence providing proof of the date of publication and non-compliance with any of the conditions of this approval must be provided to the department at the same time as the compliance report is published. The person taking the action must also notify any non-compliance with this approval to the department in writing within two business days of becoming aware of the non-compliance.	Compliant	The 2023 compliance report was provided to DAWE prior to the due date of the 3 May 2024.
29.	Upon the direction of the Minister , the person taking the action must ensure that an independent audit of compliance with the conditions of approval is conducted and a report submitted to the Minister . The independent auditor must be approved by the Minister prior to the commencement of the audit. Audit criteria must be agreed to by the Minister and the audit report must address the criteria to the satisfaction of the Minister .	Compliant	BCOPL engaged Umwelt Australia Pty Ltd to conduct an independent audit in November 2020. The audit team was approved by DAWE on the 13 October 2020 and the audit criteria and methodology was approved 10 November 2020.

CONDITION NUMBER	CONDITION	IS THE PROJECT COMPLIANT WITH THIS CONDITION?	EVIDENCE/COMMENTS
			The audit report was submitted to DAWE on the 25 March 2021.
30.	If the person taking the action wishes to carry out any activity otherwise than in accordance with the plans, as specified in the conditions, the person taking the action must submit to the department for the Minister's written approval a revised version of that plan. The varied activity shall not commence until the Minister has approved the revised plan in writing. The Minister will not approve a revised plan, unless the revised plan would result in an equivalent or improved environmental outcome. If the Minister approves the revised plan that plan must be implemented in place of the plan originally approved.	Not Applicable	No actions have occurred.
31.	If the Minister believes that it is necessary or convenient for the better protection of listed threatened species and communities or listed migratory species to do so, the Minister may request that the person taking the action make specified revisions to the management plan specified in the conditions and submit the revised plan for the Minister's written approval. The person taking the action must comply with any such request. The revised approved plan must be implemented. Unless the Minister has approved the revised plan then the person taking the action must continue to implement the originally approved plan, as specified in the conditions.	Not Applicable	No request has been made by the Minister.
32.	If, at any time after 5 years from the date of this approval, the person taking the action has not commenced new mining actions , then the person taking the action must not commence the action without the written agreement of	Not Applicable	Project extension started on 3 February 2014, within the 5 year period.

CONDITION NUMBER	CONDITION	IS THE PROJECT COMPLIANT WITH THIS CONDITION?	EVIDENCE/COMMENTS
	the Minister .		
	Publication of plans		
33.	The person taking the action must maintain accurate records substantiating all activities and outcomes associated with or relevant to the above conditions of approval, including measures taken to implement the management plans required by this approval, and make them available upon request to the department . Such records may be subject to audit by the department or an independent auditor in accordance with section 458 of the EPBC Act, or used to verify compliance with the conditions of approval. Summaries of audits will be posted on the department's website. The results of audits may also be publicised through the general media.	Compliant	BCOPL are able to substantiate all activities and outcomes associated with this approval via accurate records.
34.	Unless otherwise agreed to in writing by the Minister , the person taking the action must publish all management plans referred to in these conditions of approval on their website. Each management plan must be published on the website within 1 month of being approved.	Compliant	All approved management plans are published on the company website.



Our ref: PS224203-NTL-ECO-LTR-001 RevA

2 May 2025

Level 3, 51-55 Bolton St
Newcastle NSW 2300
PO Box 1162
Newcastle NSW 2300

Tel: +61 2 4929 8300
Fax: +61 2 4929 8382
www.wsp.com

Alex Williams
Biodiversity and Community Superintendent
Idemitsu Australia Pty Ltd
386 Leards Forest Road
Boggabri NSW 2382

Dear Alex

EPBC Condition of Approval 28 - 2024 Tree Clearing

This letter details the progression of Boggabri Coal Mine (the project) against Condition 1, 2 and 5a of the project's Commonwealth Conditions of Approval, as described in Table 1. Approval was granted for the Boggabri Coal Mine Extension (EPBC 2009/5256) on 11 February 2013 under Section 130(1) and 133 of the *Environment Protection and Biodiversity Conservation Act 1999* (EPBC Act). The approval is subject to several conditions imposed by the then Minister for Sustainability, Environment, Water, Population and Communities. The Department has since been renamed as the Department of Climate Change, Energy, the Environment and Water.

Table 1 EPBC Conditions of Approval (selected)

Condition of Approval	
1	<i>The person taking the action must not clear more than 82 ha of the EPBC listed White Box-Yellow Box-Blakely's Red Gum Grassy Woodland and Derived Native Grassland critically endangered ecological community within the Boggabri extension project area identified in Attachment A of these conditions</i>
2	<i>The person taking the action must not clear more than 650 ha of known native vegetation communities and/or potential habitat for the regent honeyeater (<i>Anthochaera phrygia</i> – formerly <i>Xanthomyza phrygia</i>), swift parrot (<i>Lathmus discolor</i>) and greater long-eared bat (<i>Nyctophilus corbeni</i>), within the Boggabri extension project area identified in Attachment A of these conditions, to the extent that it is not inconsistent with the requirement to retain the biodiversity corridor required under condition 3. The 650 ha of native vegetation communities specified includes the 82 ha of the critically endangered ecological community at condition 1.</i>
5	<i>The person taking the action must submit to the Minister for approval, within three months of the commencement of the action, an approach that: Limits the maximum project area disturbance (in hectares) specified for each of the years 5, 10, 15 and 21 from the date of this approval of the White Box Yellow Box Blakely's Red Gum Grassy Woodland and Derived Native Grassland ecological community and habitat or potential habitat for the regent honeyeater, swift parrot and greater long-eared bat.</i>

Condition 1 and 2

Within the extension area, the project has impacted approximately 33.4 ha of the EPBC Act listed White Box- Yellow Box-Blakely's Red Gum Grassy Woodland and Derived Native Grassland Critically Endangered Ecological Community, inclusive of the 2024 tree clearing program (Table 2, Figure 1). In addition, the project has cleared approximately 241.43 ha of habitat for the Regent Honeyeater, Swift Parrot and Corben's Long-eared Bat (formerly known as Greater Long-eared Bat) (Table 2, Figure 2).

Table 2 *Extent of impact to areas of MNES within the Boggabri extension area*

Year	Area of Critically endangered ecological Community (ha) ^{1, 3}	Habitat for Regent Honeyeater, Swift Parrot and Corben's Long-eared Bat (Ha) ^{2, 3}
Up to 2023	30.31	229.81
2024	3.04	11.62
Total (year end 2024)	33.35	241.43
Approved 15-year total (2028)	58.29	415.58
Maximum approved clearing extent	82.0	650.0

1. EPBC listed White Box-Yellow Box-Blakely's Red Gum Grassy Woodland and Derived Native Grassland Critically Endangered Ecological Community.
2. Habitat for Regent Honeyeater, Swift Parrot and Greater Long-eared Bat is inclusive of the EPBC listed White Box-Yellow Box-Blakely's Red Gum Grassy Woodland and Derived Native Grassland Critically Endangered Ecological Community.
3. In accordance with advice received from the then Department of Agriculture, Water and the Environment, clearing works associated with mine exploration activities within the wider Boggabri extension area are not incorporated in the extent of impact to Matters of National Environmental Significance.

Condition 5

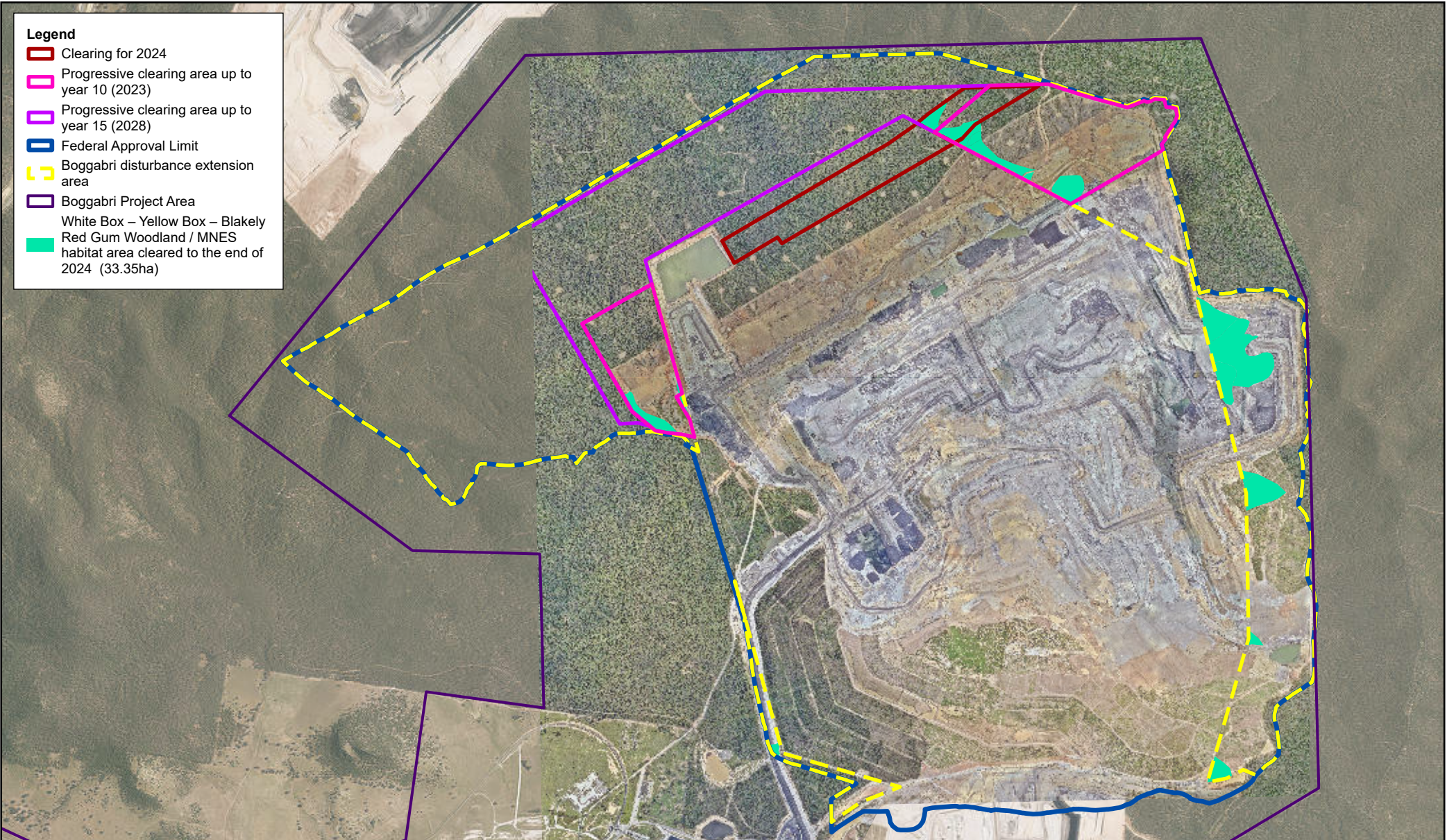
Figure 3 illustrates the 2024 tree clearing program occurring within the progressive clearing limit up to year 15.

Yours sincerely



Gavin Shelley
Senior Ecologist

Encl: Figure 1 - progressive mine impacts on EPBC Act Box Gum Woodland
Figure 2 - progressive mine impacts on other MNES
Figure 3 - progressive mine impacts - Year 15 (2028)



Map: BC2025_OPR001_r1v2_clearances
 Date: 2/05/2025
 Author: AUAC507280
 Approved by: - N.Cooper

0 300 600 m
 1:32,500
 Scale ratio correct when printed at A4
 Coordinate system: GDA 1994 MGA Zone 56

Source: Imagery from BCOPPL;

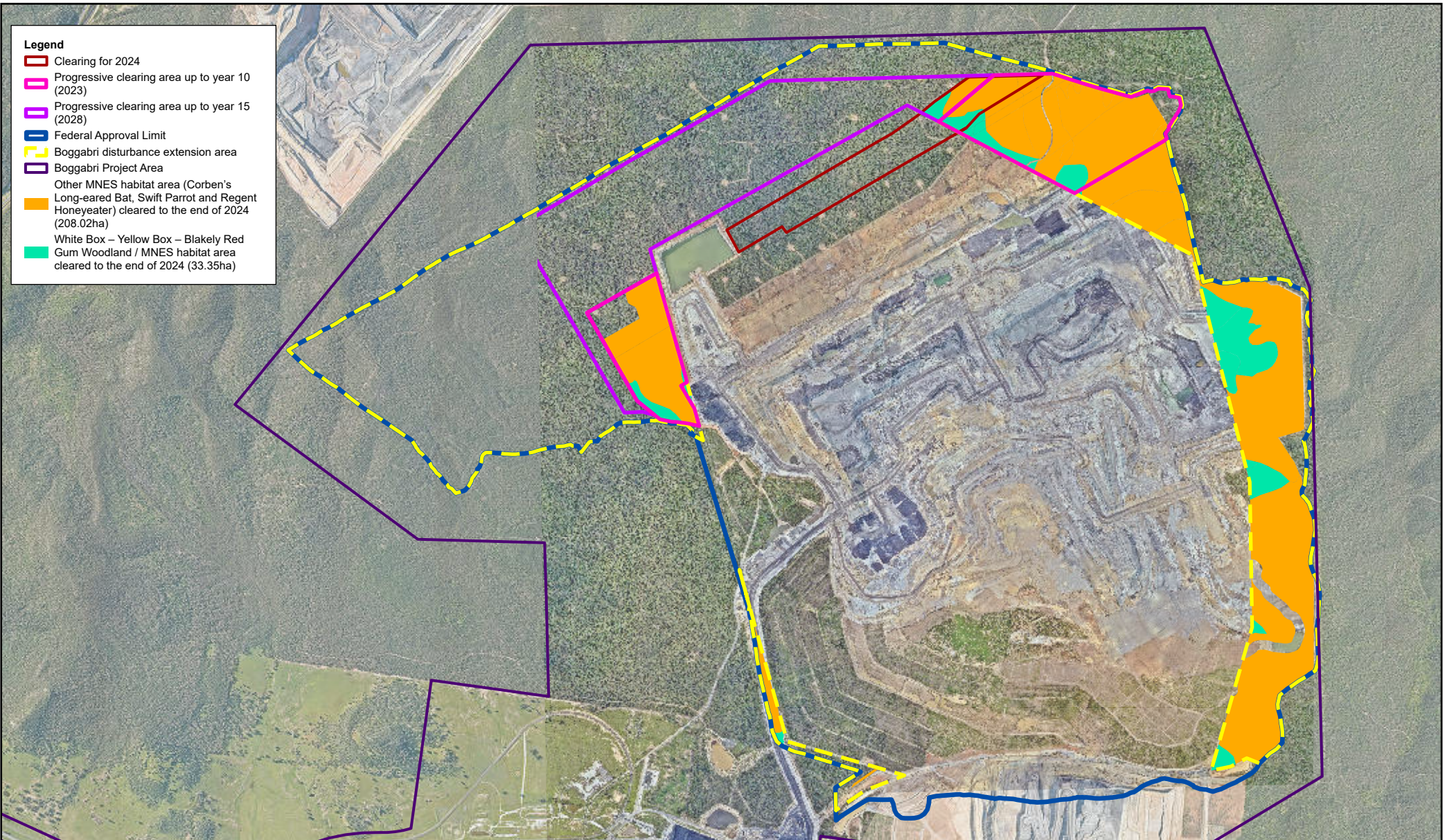
© WSP Australia Pty Ltd ("WSP") Copyright in the drawings, information and data recorded ("the information") is the property of WSP. This document and the information are solely for the use of the authorized recipient and this document may not be used, copied or reproduced in whole or part for any purpose other than that which it was supplied by WSP. WSP makes no representation, undertakes no duty and accepts no responsibility to any third party who may use or rely upon this document or the information. NCSI Certified Quality System to ISO 9001. © APPROVED FOR AND ON BEHALF OF WSP Australia Pty Ltd.

C:\Users\AUAC507280\WSP\0365\Boggabri GIS-Ecology - General\5_Shared\54_Production\Maps\2025\Operations_Clearances\BC2025_OPR001_r1v1_clearances\BC2025_OPR001_r1v2_clearances.aprx

**PROGRESSIVE CLEARING LIMITS
 EOY 2024**

Figure 1
 Progressive mine impacts on EPBC listed White Box - Yellow Box - Blakely's Red Gum Grassy

wsp
 Boggabri Coal Operations
 www.wsp.com



- Legend**
- Clearing for 2024
 - Progressive clearing area up to year 10 (2023)
 - Progressive clearing area up to year 15 (2028)
 - Federal Approval Limit
 - Boggabri disturbance extension area
 - Boggabri Project Area
 - Other MNES habitat area (Corben's Long-eared Bat, Swift Parrot and Regent Honeyeater) cleared to the end of 2024 (208.02ha)
 - White Box – Yellow Box – Blakely Red Gum Woodland / MNES habitat area cleared to the end of 2024 (33.35ha)

**PROGRESSIVE CLEARING LIMITS
EOY 2024**

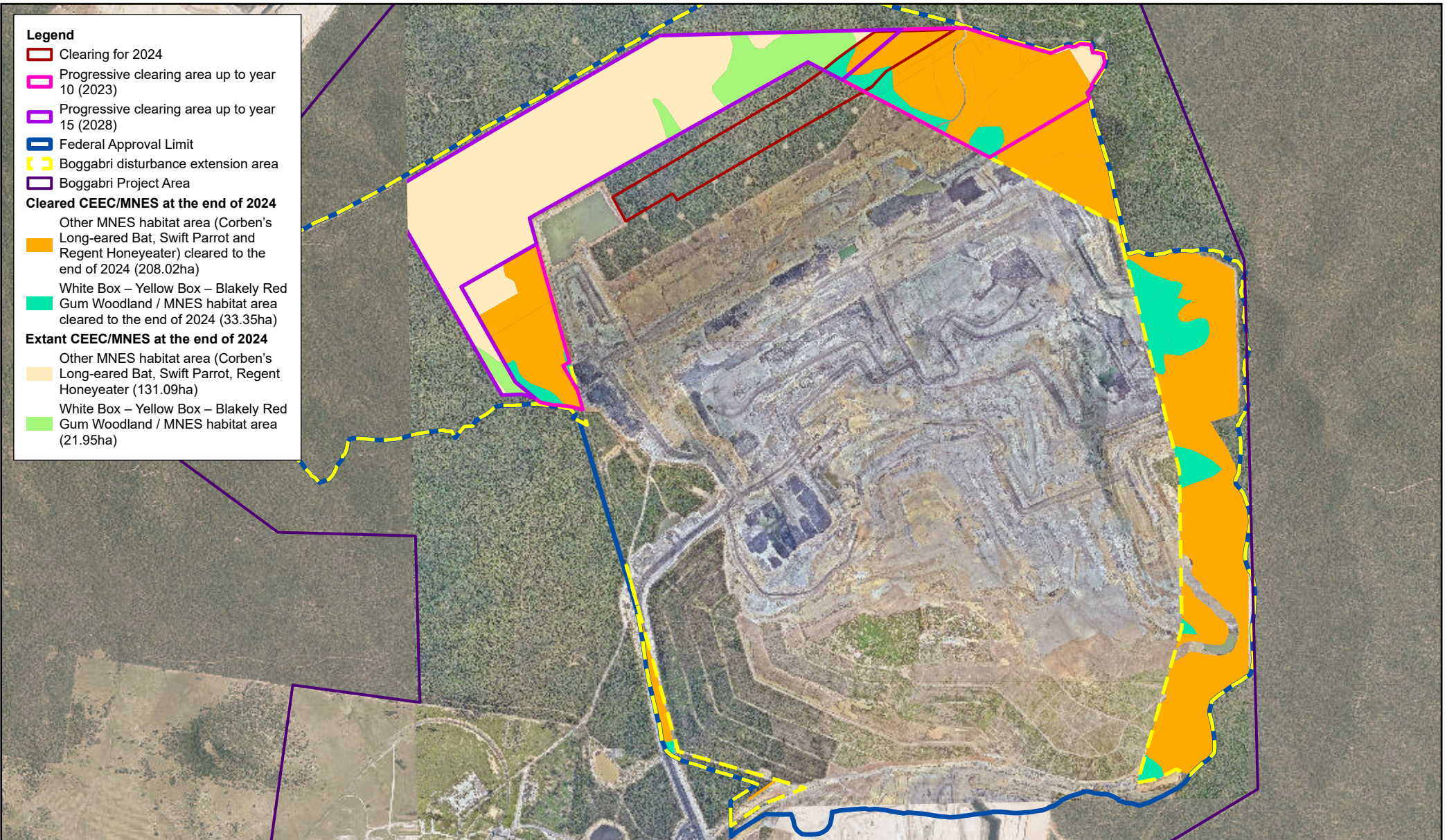
Map: BC2025_OPR002_r1v2_clearances
 Date: 2/05/2025
 Author: AUAC507280
 Approved by: - N.Cooper

1:32,500
Scale ratio correct when printed at A4
Coordinate system: GDA 1994 MGA Zone 56



Figure 2
 Progressive mine impacts of other MNES (Corben's Long-eared Bat, Swift Parrot and Swift Parrot)

© WSP Australia Pty Ltd ("WSP") Copyright in the drawings, information and data recorded ("the information") is the property of WSP. This document and the information are solely for the use of the authorized recipient and this document may not be used, copied or reproduced in whole or part for any purpose other than that which it was supplied by WSP. WSP makes no representation, undertakes no duty and accepts no responsibility to any third party who may use or rely upon this document or the information. NCSI Certified Quality System to ISO 9001. © APPROVED FOR AND ON BEHALF OF WSP Australia Pty Ltd.
 C:\Users\AUAC507280\WSP\0365\Boggabri GIS-Ecology - General\5_Shared\54_Production\Maps\2025\Operations_Clearances\BC2025_OPR002_r1v1_clearances\BC2025_OPR002_r1v2_clearances.aprx



Legend

- Clearing for 2024
- Progressive clearing area up to year 10 (2023)
- Progressive clearing area up to year 15 (2028)
- Federal Approval Limit
- Boggabri disturbance extension area
- Boggabri Project Area

Cleared CEEC/MNES at the end of 2024

- Other MNES habitat area (Corben's Long-eared Bat, Swift Parrot and Regent Honeyeater) cleared to the end of 2024 (208.02ha)
- White Box – Yellow Box – Blakely Red Gum Woodland / MNES habitat area cleared to the end of 2024 (33.35ha)

Extant CEEC/MNES at the end of 2024

- Other MNES habitat area (Corben's Long-eared Bat, Swift Parrot, Regent Honeyeater) (131.09ha)
- White Box – Yellow Box – Blakely Red Gum Woodland / MNES habitat area (21.95ha)

Map: BC2025_OPR003_r1v2_clearances
 Date: 2/05/2025
 Author: AUAC507280
 Approved by: - N.Cooper



0 300 600
m
 1:30,000
 Scale ratio correct when printed at A4
 Coordinate system: GDA 1994 MGA Zone 56

Source: Imagery from BCOPL;

© WSP Australia Pty Ltd ("WSP") Copyright in the drawings, information and data recorded ("the information") is the property of WSP. This document and the information are solely for the use of the authorized recipient and this document may not be used, copied or reproduced in whole or part for any purpose other than that which it was supplied by WSP. WSP makes no representation, undertakes no duty and accepts no responsibility to any third party who may use or rely upon this document or the information. NCSI Certified Quality System to ISO 9001. © APPROVED FOR AND ON BEHALF OF WSP Australia Pty Ltd.



**PROGRESSIVE CLEARING LIMITS
EOY 2024**

Figure 3
Progressive mine impacts - Year 15 (2028)

Boggabri Coal Operations

www.wsp.com