



INSITE HERITAGE
PTY LTD

***Aboriginal Cultural Heritage Assessment
Proposed 75W Modification (5)
(PA 09_0182) Boggabri Coal Expansion Project
Boggabri, NSW***

**Report to
Idemitsu Boggabri Coal**

August 2015

Narrabri Council Local Government Area

**PO Box 98
WANGI WANGI NSW 2267
PH 02 49755818
admin@insiteheritage.com.au**



INSITE HERITAGE
PTY LTD

Project Coordinators

Boggabri Coal

Hamish Russell

Parsons Brinkerhoff

Steve Crick

Insite Heritage Pty Ltd

Angela Besant

Authors

Angela Besant

Document Status

Final

Report Version

Version 1

CONTENT WARNING: SENSITIVE & PERSONAL INFORMATION

Please note that sections of this document contain information regarding the location of Aboriginal objects / sites. Appendices C – F also contains personal contact information of the Registered Aboriginal Parties for the project. This information is included to satisfy the consultation requirements for the project and should not be circulated in the public domain.

Table Of Contents

<i>List of Tables</i>	5
<i>List of Figures</i>	5
<i>List of Plates</i>	5
<i>Executive Summary</i>	6
1 Introduction	8
1.1 Location & Objectives	8
1.2 Aboriginal Community Consultation.....	8
1.3 Relevant Legislation	9
2 Proposed Activities	11
2.1 Site Inspection Details.....	11
2.1.1 Field Inspection Results	15
2.1.1.1 Item 1 - Roma Borehole and Pipeline	15
2.1.1.2 Item 2 - Cooboobindi Bore Hole, Pipeline, Power Line and Access	15
2.1.1.3 Item 3 - Victoria Park Bore and Pipeline	24
2.1.1.4 Item 4 - Bellevue Bore, Powerline and Pipeline.....	27
2.1.1.5 Item 5 – Heathcliff Bore and Auxiliary Infrastructure	27
3 Scientific Values & Significance Assessment	31
3.1 Significance Criteria	31
3.2 Scientific Significance Assessment & Management Recommendations	31
3.2.1 Scientific Significance Assessment.....	31
3.2.2 Cultural Significance	32
3.2.2.1 Response to issues raised	32
3.3 Aboriginal Cultural Heritage.....	33
4 Recommendations	33
<i>References</i>	34
<i>Appendix A - AHIMS Search</i>	35
Appendix A1 -BCP Pipeline and bore sites	36
Appendix A2 - Bellevue Powerline and Access.....	37
Appendix A3 - Victoria Park and Cooboobindi Bores, powerlines and pipelines and Revised bore location Roma and Victoria Park	38
<i>Appendix B - Due Diligence Reports</i>	42
Appendix B1 - BCP Pipeline and bore sites.....	42
Appendix B2 - Victoria Park and Cooboobindi Bores, powerlines and pipelines	50
Appendix B3 - Revised bore location Roma and Victoria Park	58
Appendix B4 - Revised Due Diligence Inspection for Power line, Pipeline and Bore Hole sites – at Roma and Cooboobindi	74
Appendix B5 - Bellevue Due Diligence Report.....	93

Appendix C – Registered Aboriginal Stakeholder Comments.....	99
Appendix D – Consultation Log	101
Appendix E - Letters to RAP's & Information Supplied to Stakeholders	111
Correspondence 10/10/2014	112
Invitation to Extraordinary ASCF Meeting on 16/10/2014 (Mailed/emailed 10/10/2014)	113
Copy of Email Invitation to ASCF Meeting 16/10/2014	115
Registered Post Record for ASCF Invitation 16/1/2014	116
Correspondence 23/10/2014.....	117
BCPL Request for Comment on Proposed 75W Modification (Mailed/emailed 23/10/2014).....	118
ASCF Meeting Invitation 18/11/2014 (Mailed/emailed 23/10/2014)	124
ASCF Meeting Agenda 18/11/2014 (Mailed/Emailed 23/10/2014).....	125
Meeting Minutes 16/10/2014 (Mailed/Emailed 23/10/2014)	126
Copy of Email of ASCF (18/11/2014) Invitation, Meeting Agenda, Previous Meeting Minutes (16/10/2014), and Request for comment on 75W Modification.	130
Express Post Record of ASCF (18/11/2014) Invitation, Meeting Agenda, Previous Meeting Minutes (16/10/2014), and Request for comment on 75W Modification.....	133
Correspondence 23/10/2014 (Gomerioi Traditional Custodians)	135
Elders Meeting Invitation 17/11/2014.....	135
Elders Meeting Draft Agenda.....	136
Email Invitation to GTC 23/10/2014	137
Correspondence 19/11/2014.....	138
Notification of Extension of Review Period for 75W Modification.....	138
Express Post Record for RAP's Without Email	139
Correspondence 13/03/2015.....	140
Invitation to ASCF 15/04/2015 – Sent By Boggabri Coal.....	140
ASCF 15/04/2015 Meeting Agenda.....	141
Appendix F – Meeting Minutes and Attendance Sheets	142
ASCF Meeting Minutes 16/10/2014.....	143
Meeting Attendance Sheet 16/10/2014	147
GTC Meeting Minutes 17/11/2014	149
Meeting Attendance Sheet 17/11/2014	154
ASCF Meeting Minutes 18/11/2014.....	156
Meeting Attendance Sheet 18/11/2014	161
Meeting Minutes 15/04/2015	162

List of Tables

Table 1 Sites Located during Due Diligence Assessments located within the proposed footprint.....	12
Table 2 Consultation Log 75W.....	102

List of Figures

Figure 1 Location of Infrastructure and associated project boundary changes	10
Figure 2 Item 1 – Proposed Roma Bore Hole and Pipeline	13
Figure 3 Item 2 – Cooboobindi Bore Hole, Pipeline, and Power Line	14
Figure 4 Area Surveyed during Due Diligence Inspections and Archaeological Sites Identified.	16
Figure 5 Item 1 – Roma Bore Hole, Pipeline and Access, Area Surveyed During Due Diligence Inspections and Sites Identified.	17
Figure 6 Item 2 – Cooboobindi Bore Hole, Pipeline, Power Line and Access, Area Surveyed During Due Diligence Inspections and Sites Identified.	18
Figure 7 Route surveyed in 2014 with amended powerline route. Note T5 and T6 no longer required.....	25
Figure 8 Victoria Park actual route - blue pipeline, red power, green access.....	26
Figure 9 Location Heathcliff, Cooboobindi, Roma and Bellevue.....	29

List of Plates

Plate 1 Access Track at Roma Bore hole and Pipeline Facing West Toward Cooboobindi .	19
Plate 2 Access Track at Roma Bore Hole and Pipeline Facing East toward Warner’s Road	19
Plate 3 Roma Bore Hole Facing North Showing Impact of Most Recent Ploughing.....	20
Plate 4 Roma Bore Hole and Pipeline Inspection Area Facing NE.....	20
Plate 5 Roma Bore Hole and Pipeline Inspection Area Facing South	21
Plate 6 Remnant River Terrace at Roma Facing NE Showing Stones Churned Up During Ploughing	21
Plate 7 Roma Bore Hole and Pipeline Impact Area Facing North (Taken October 2014)	22
Plate 8 Cooboobindi Facing South West from Bore Hole Location Showing Approximate Alignment of Power Line and Access Track in Foreground.	22
Plate 9 Cooboobindi Facing South West Toward PL9/14 and PL4/15 showing disturbance from ploughing, construction of drainage systems, and water runoff patterns.....	23
Plate 10 Previous Ground Disturbance at Cooboobindi from farming activities.....	23
Plate 11 Cooboobindi view north toward proposed pipeline route.	24

Executive Summary

Insite Heritage Pty Ltd were commissioned by Idemitsu Boggabri Coal to prepare an Aboriginal Cultural Heritage Assessment for a 75W application to modify various components of the Boggabri Coal Project Approval (PA 09_0182) (the Modification). The Modification application seeks approval for the adjustment of the project boundary to include proposed infrastructure necessary for the ongoing operation of the project.

The components of the modification have been assessed with representatives of the Boggabri Coal Registered Aboriginal Parties (RAPs) associated with the Boggabri Expansion Project (BCEP). Field inspections were undertaken for most components of the Modification.

The recommendations of this report have been developed in conjunction with RAPs as per discussions in the field, and at three meetings. Information regarding the 75W Mod 5 report have been made available to all RAPs and discussed with RAPs at meetings on the 16th October and the 18th November, 2014. An additional meeting was held with Gomeroi Traditional Custodians, several members of which are RAPs, on the 17th November 2014. On the 19th November, 2014 a letter was sent to those RAPs who had not attended a meeting or made comment on the previous information requesting a response by the 28th November, 2014 and offering any further information required.

A copy of this report with the updated proposed impact footprint was sent to all RAP's for a 28 day review period on the 15th June 2015 responses are due by the 10th July 2015. Previous reviews have resulted in one comment from the Gomeroi Traditional Owners regarding the potential for megafauna. An assessment was carried out to respond to the question and that assessment was supplied to the GTC. There is negligible potential for the bores and auxiliary infrastructure to impact megafauna remains.

Site inspections of areas of proposed works outside the existing project boundary located the following:

Item 1 - Roma Bore Hole and Pipeline – one open site (8 artefacts) in a disturbed context located, and an area of PAD identified. Sites will be avoided where possible or salvaged if necessary.

Item 2 - Cooboobindi Bore Hole, Pipeline, Power Line, and Access – 5 artefacts located on access road (PL 9/14), and 2 artefacts located within a ploughed field (PL 4/15). The pipeline route is located within an existing drain 5m wide and 2.5 metres deep. The access road will be constructed on top of the spoil from the drain. The power line will be above ground and will connect with an existing power pole within the Cooboobindi property. Ground disturbance for the power line will be restricted to a footprint of ~2mx2m where power poles will be erected.

Item 3 - Victoria Park auxiliary infrastructure. The bore is in place and requires a pipeline and powerline – 1 scatter of 7 artefacts over an area of 50m x 50m is located on the pipeline route on disturbed ground.

Item 4 - Bellevue Pipeline - artefact scatter of 100 objects over a 50 m area on ground heavily disturbed by ploughing. **Bellevue** powerline – Isolated finds - 1 of 2 artefacts and

three isolated finds on an unformed road and adjacent paddock. These sites can be avoided.

The assessment finds that the management of the six sites located within the modified project boundary can be carried out in accordance with the current CHMP methodology. The review of the salvage methodology within the CHMP has been raised in writing and at four community forums, and is considered to be working effectively as no potential modifications have been raised by the RAPs. Where the revised project boundary incorporates additional land, the additional area would be managed by incorporation into the CHMP boundary and the application of the policies and procedures prescribed in the CHMP to any areas of proposed disturbance. The revised project boundary incorporates land that is disturbed by a long history of agricultural activities. The methodology of the CHMP would include inspection, avoid sites where possible and where not possible – collection, sub-surface assessment and grader scrapes where appropriate (never to extend beyond boundaries of proposed disturbance). Sites to remain in-situ will be fenced to protect them from inadvertent impact in the course of construction activities. Discovery of unknown sites, or possible human remains would be subject to Section 4.3 and 4.4 of the CHMP.

1 Introduction

1.1 Location & Objectives

Insite Heritage Pty Ltd were commissioned by Idemitsu Boggabri Coal to conduct an Aboriginal archaeological and cultural heritage assessment to accompany a submission for a 75W Modification (5) to the approved Boggabri Coal Project. The Modification is required to allow for adjustments to the project boundary to include proposed additional infrastructure necessary for the ongoing operation of the project (Figure 1).

A number of the elements of the Modification are approved under PA 09_0182, however the actual footprint of the infrastructure components have changed from the conceptual layouts presented in the BCEP Environmental Assessment (Hansen Bailey 2010). The Project Boundary is located within the boundaries of the Narrabri Shire Council Local Government Area.

The aims of the investigation were to assess whether the proposed boundary modification will include additional Aboriginal sites that will require mitigation / management. It is proposed that sites within the revised boundary be managed in accordance with the BCEP Cultural Heritage Management Plan (CHMP). Mitigation measures were then developed for any identified sites or areas of potential subsurface archaeological deposits (PAD).

1.2 Aboriginal Community Consultation

Idemitsu Boggabri Coal maintains a Register of Aboriginal Parties (RAPs) established during the course of the BCEP assessment process and a subsequent 2011 Modification to the Boggabri Coal DA36/88. The RAPs are consulted regarding the progress of the BCEP and Boggabri Coal activities, by means of the Aboriginal Stakeholder Consultation Forums held quarterly. The forum invitations are sent to the 31 RAPs on the project, it is also common for other community members to attend. In addition meetings are regularly held with the Gomeri Traditional Custodians, whom are updated with all aspects of the project.

The locations of most of the Modification elements have been assessed by inspection or discussed in the field, by RAPs drawn from a roster. The following consultation has occurred to date:

1. A meeting invitation that included a list of the elements of the 75W application was sent to all the Boggabri Coal RAPs on the 10th October, 2014.
2. The meeting was held on the 16th October, 2014.
3. Additional information, a request for information regarding cultural values, and the methodology for the management of those values, in addition to the meeting minutes, were sent to all the RAPs for comment on the 23rd October, 2014. An invitation to the ASCF on the 18th November, 2014 was included.
4. A meeting was held with the Gomeri Traditional Custodians on the 17th November 2014. Three of the Elders of this group are also RAPs.
5. An ASCF was held in Gunnedah on the 18th November, 2014.

6. On the 19th November, 2014 a letter was sent to those RAPs who had not attended a meeting or made comment on the previous information requesting a response by the 28th November, 2014 and offering any further information required.
7. An ASCF meeting invitation was sent to all the Boggabri Coal RAPs on the 13th March, 2015. A meeting agenda was also sent out indicating that the proposed 75W Modification (5) Would Also be discussed at the meeting
8. 15th April 2015, an ASCF meeting was held. The proposed 75W Modification (5) was discussed during the meeting.
9. A draft Modification 5 report was provided to RAPs on the 15th June 2015 for a 28 day review period. No comments were received.

For further details on Community Consultation refer to Appendices C - F.

1.3 Relevant Legislation

The National Parks & Wildlife Act 1974 (NPW Act)

The NPW Act (section 90) provides statutory protection for all material evidence of Aboriginal occupation of NSW. Aboriginal places which are areas of cultural significance to the Aboriginal community, are also protected by the NPW Act 1974 (section 84) that states:

- The Minister may declare lands to be '*protected archaeological areas*' to preserve Aboriginal places and objects; and
- It is an offence to disturb or destroy an Aboriginal object or declared Aboriginal place without first obtaining written consent from the Director of National Parks and Wildlife Service NSW.

Part 6 of the NPW Act provides specific protection for Aboriginal objects and declared Aboriginal places by establishing offences of harm. Harm is defined to mean destroying, defacing, damaging or moving an object from the land. The NPW Act establishes a number of offences and penalties that apply to harm to an Aboriginal object. There are a number of defences and exemptions to the offence of harming an Aboriginal object or place, one of them being that under Section 75U of the EP&A Act, which provides that an AHIP is not required for projects approved under Part 3A of the EP&A Act.

The Environmental Planning & Assessment Act 1979 (EP&A Act)

The BCEP was approved under Part 3A of the EP&A Act in 2012.

The Part 3A section of the Act provided for the assessment of State Significant Projects and subsequent variations to those approvals are assessed by the Department of Planning and Infrastructure (DoPI) under 75W Modifications.



Figure 1 Location of Infrastructure and associated project boundary changes

2 Proposed Activities

The two proposed areas of impact subject to this 75W Modification (5) report are the Roma bore hole and pipeline (Item 1) (Figure 2), and the Cooboobindi bore hole, pipeline, power line, and access (Item 2) (Figure 3).

Activities located outside of the existing project boundary and that are likely to involve ground disturbance, have been subject to due diligence assessments as per Section 5.1.2.1 Due Diligence Inspection in the CHMP. The due diligence assessments included field surveys to identify any Aboriginal objects or potential subsurface material that may be impacted.

Many of the areas subject to the due diligence reports will not be impacted on by the proposed works due to design changes and are therefore not addressed in this 75W Modification (5) report.

2.1 Site Inspection Details

The due diligence inspections were carried out by Angela Besant or Taryn Gooley (archaeologists) and representatives of the BCEP RAPs between October 2014 and June 2015. No sites have been impacted under this process. Multiple AHIMS searches were conducted for the proposed areas of impact due to changes in design plans. The AHIMS Search results can be seen in Appendix A.

The due diligence reports associated with areas relevant to the Modification can be seen in Appendix B; note that there are certain elements that have been inspected on multiple occasions due to design changes. The due diligence reports have not been changed to reflect subsequent adjustments and remain in the format submitted to Boggabri Coal at the time writing. Items which are no longer relevant to this Modification are therefore featured in the attached due diligence reports.

A total of eight archaeological sites were identified within the proposed areas of impact (Item 1 and Item 2) during the due diligence inspections. The sites located include six isolated finds (1- 2 artefacts), and three scatters of 5 to 8 artefacts at low density in disturbed contexts. A summary of the due diligence assessment results and management recommendations for each of the sites are outlined in section 2.2.1 below.

Table 1 Shows the sites identified during the due diligence assessments which fall within the proposed footprint of disturbance and may be impacted on by the proposed works.

Figures 2, 3 and 4 show the proposed works for the 75W Modification (5).

Table 1 Sites Located during Due Diligence Assessments located within the proposed footprint

Site Name	75W element	Inside / Outside existing boundary / project	Content	Impact Management /
PL 1/14	Bellevue pipeline	Outside	120 artefacts	Salvage within impact zone.
PL 2/14 (BA1)	Bellevue powerline & access	Outside	IF	Avoid
PL 3/14 (BA2)	Bellevue powerline & access	Outside	IF	Avoid
PL 4/14 (BA3)	Bellevue powerline & access	Outside	IF	Salvage
PL 5/14 (BA4 &BA5)	Bellevue powerline & access	Outside	2 artefacts	Salvage
PL 6/14	Merriown pipeline to Victoria Park	Outside		Salvage
PL 7/14	Victoria Park bore	Outside	IF	Avoided – bore relocated
PL 8/14	Roma pipeline	Outside	8 artefacts (3 on road, 5 on pipeline route). Area of PAD	Salvage within impact zone Area of PAD will not be impacted.
PL 9/14	Cooboobindi access	Outside	5 artefacts	Salvage

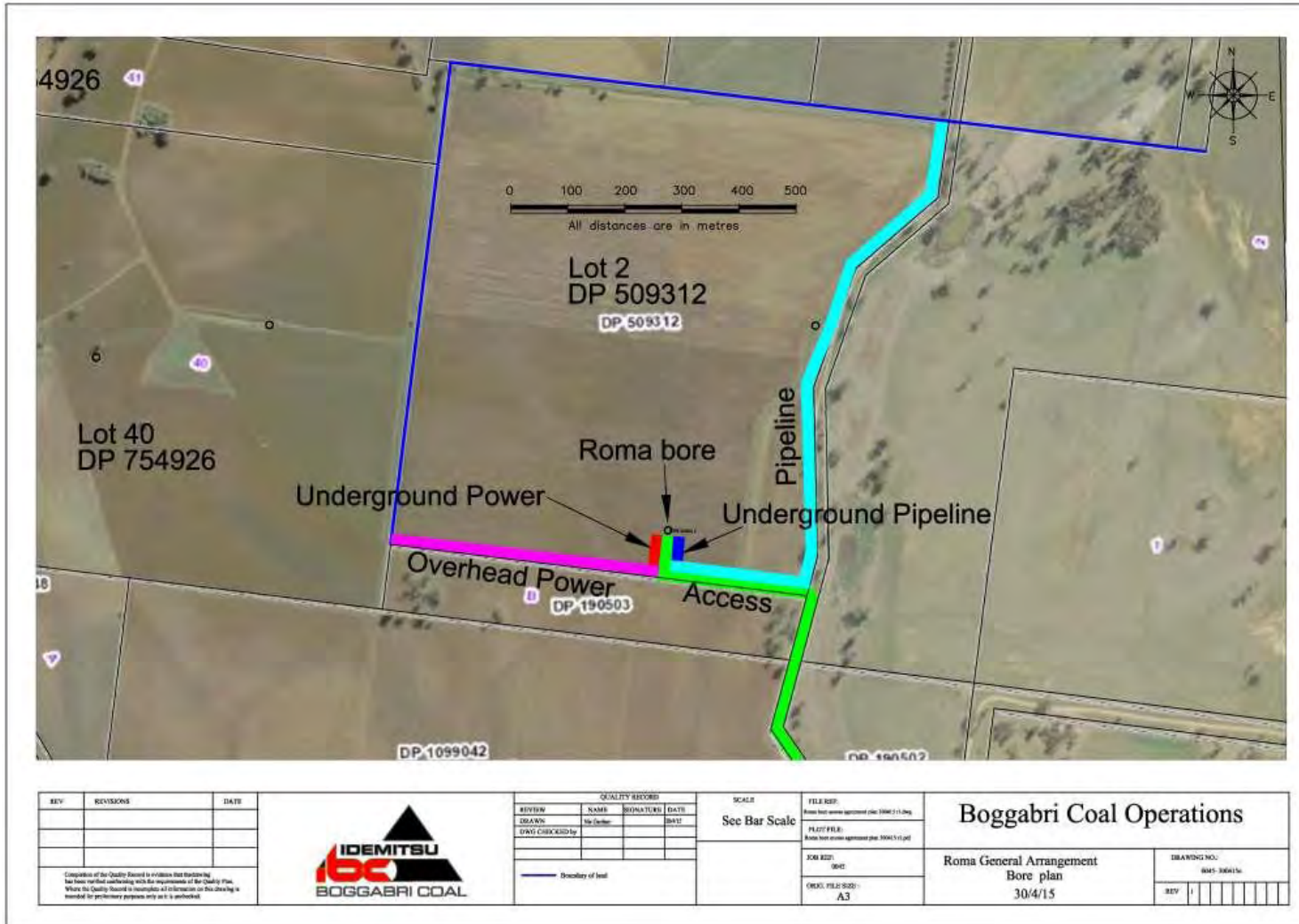


Figure 2 Item 1 – Proposed Roma Bore Hole and Pipeline

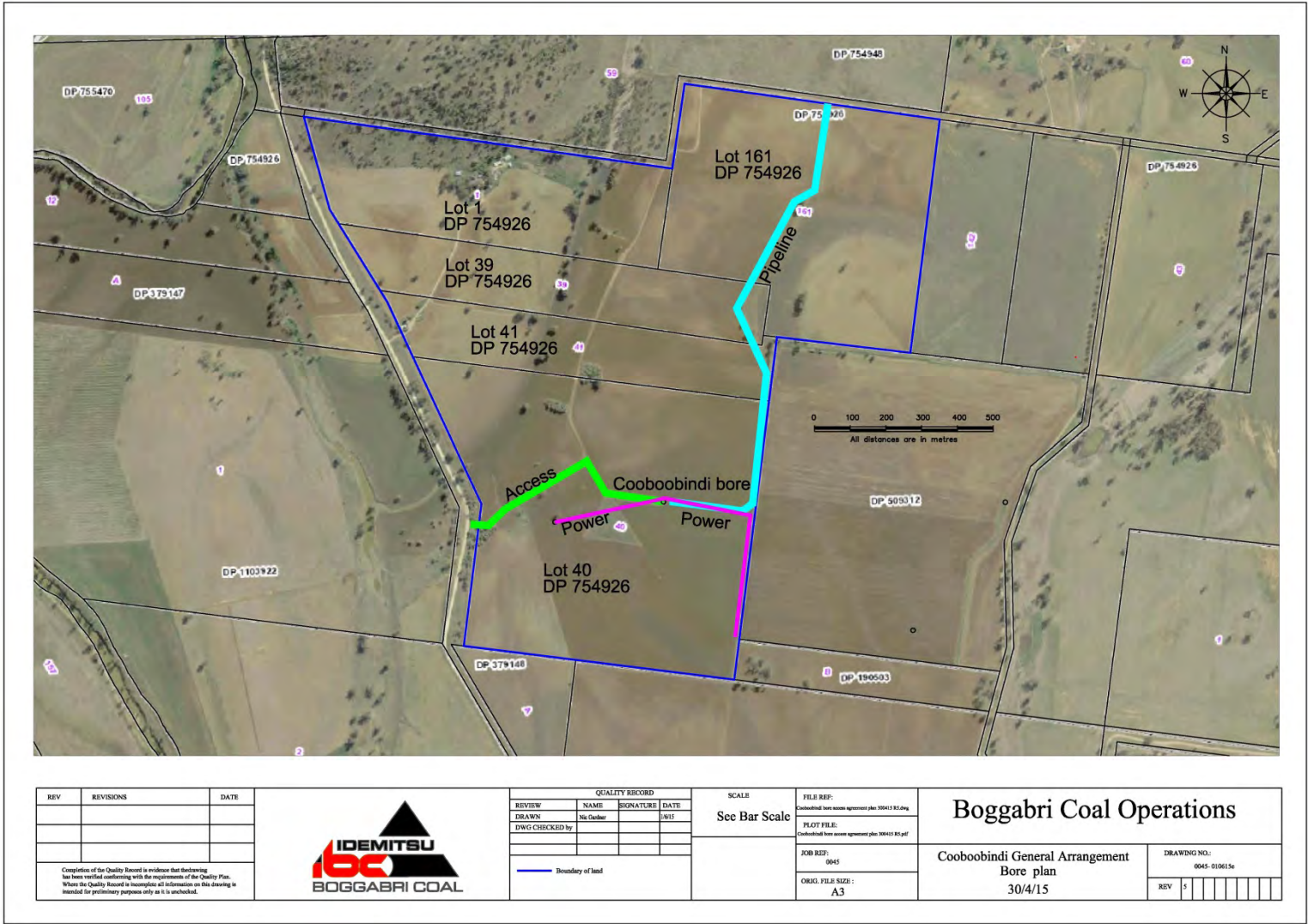


Figure 3 Item 2 – Cooboobindi Bore Hole, Pipeline, and Power Line

2.1.1 Field Inspection Results

2.1.1.1 Item 1 - Roma Borehole and Pipeline

The Roma bore and pipeline has been subject to three separate due diligence assessments (Details in Appendix B2 - B4). An open site of 8 artefacts (PL8/14) was located and an area of PAD identified. The artefacts and area outside the PAD has been disturbed by agricultural activity including ploughing and the construction of Warner's Road. A further three isolated artefacts (PL1/15, PL2/15, and PL3/15) were identified on the access track connecting the Roma bore hole to Warner's Road (Figures 4 and 5).

The proposed impact footprint for Item 1 is contained within highly disturbed contexts as outlined in the due diligence assessments. The area of PAD identified within site PL8/14 will not be impacted on by the proposed works.

It has been recommended that should the 75W project boundary realignment be approved, the revised boundary be incorporated into the CHMP. Where sites cannot be avoided the appropriate salvage methodology will be applied (Table 2).

For images taken during the due diligence inspections for Item 1 refer to Plates 1-7

2.1.1.2 Item 2 - Cooboobindi Bore Hole, Pipeline, Power Line and Access

Three due diligence inspections have been conducted over the proposed Cooboobindi Bore Hole, Pipeline, Power line and Access (details in Appendix B1, B2, and B4). A disperse scatter of 5 artefacts (PL9/14) was located on the access to 'Cooboobindi' from Therrebri Road on the 16th October, 2014 (Figures 4 and 6). The artefacts were found on an unformed track over 35 metres. The track displayed cracks from shrink /swell clay soils. A small artefact scatter consisting of two artefacts was identified on the 9th June 2015 within the recently ploughed field approximately 120m to the south east of PL9/14. The entire area surveyed has been highly disturbed by farming activities such as ploughing, and the construction of contour banks and drainage systems. Water wash within this area is also a major issue.

The proposed impact footprint for Item 2 is contained within highly disturbed contexts as outlined in the due diligence assessments.

For images taken during the due diligence inspections for Item 2 refer to Plates 8-11

It has been recommended that should the 75W project boundary realignment be approved, the revised boundary be incorporated into the CHMP. Where sites cannot be avoided the appropriate salvage methodology will be applied (Table 2).

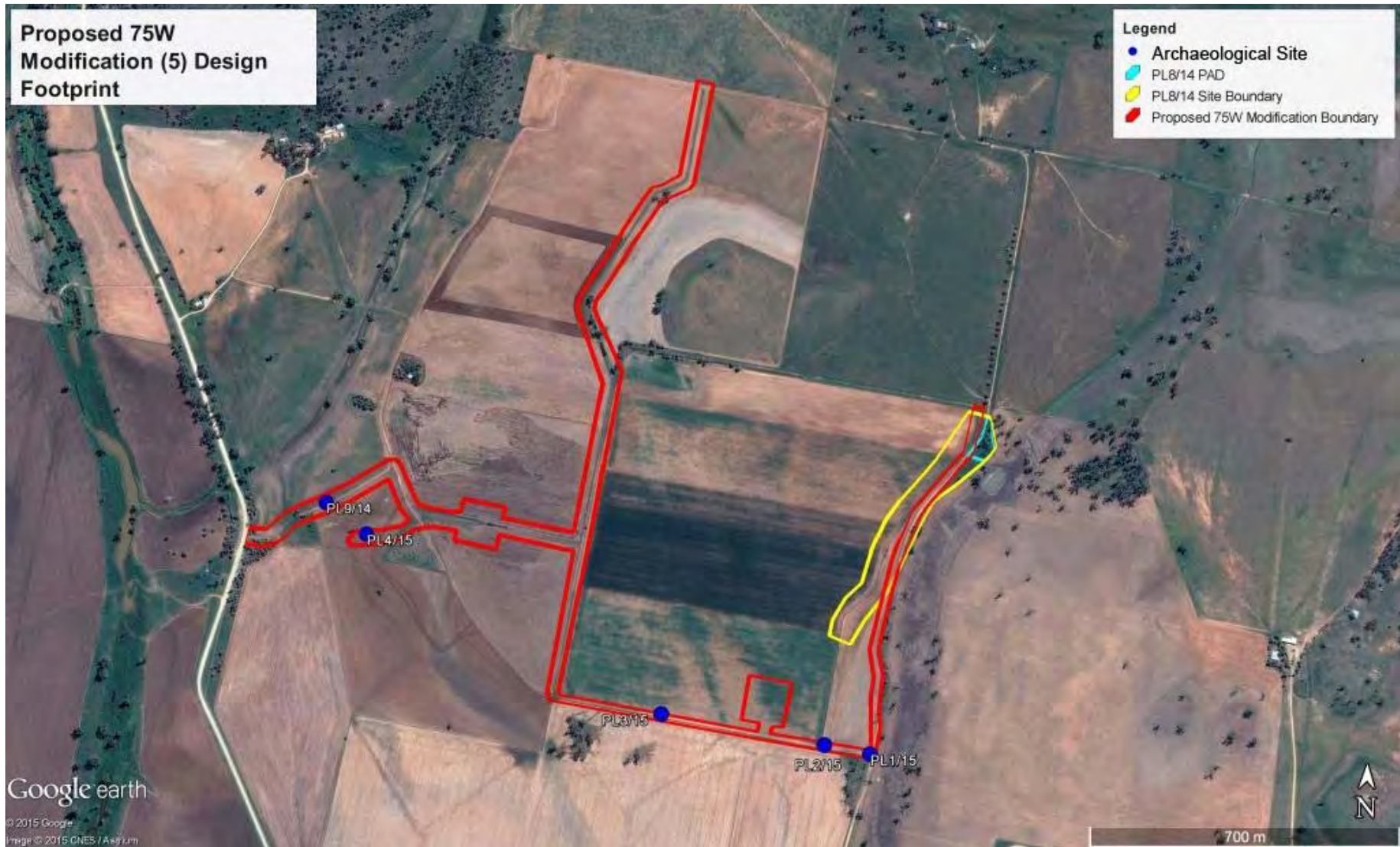


Figure 4 Area Surveyed during Due Diligence Inspections and Archaeological Sites Identified.

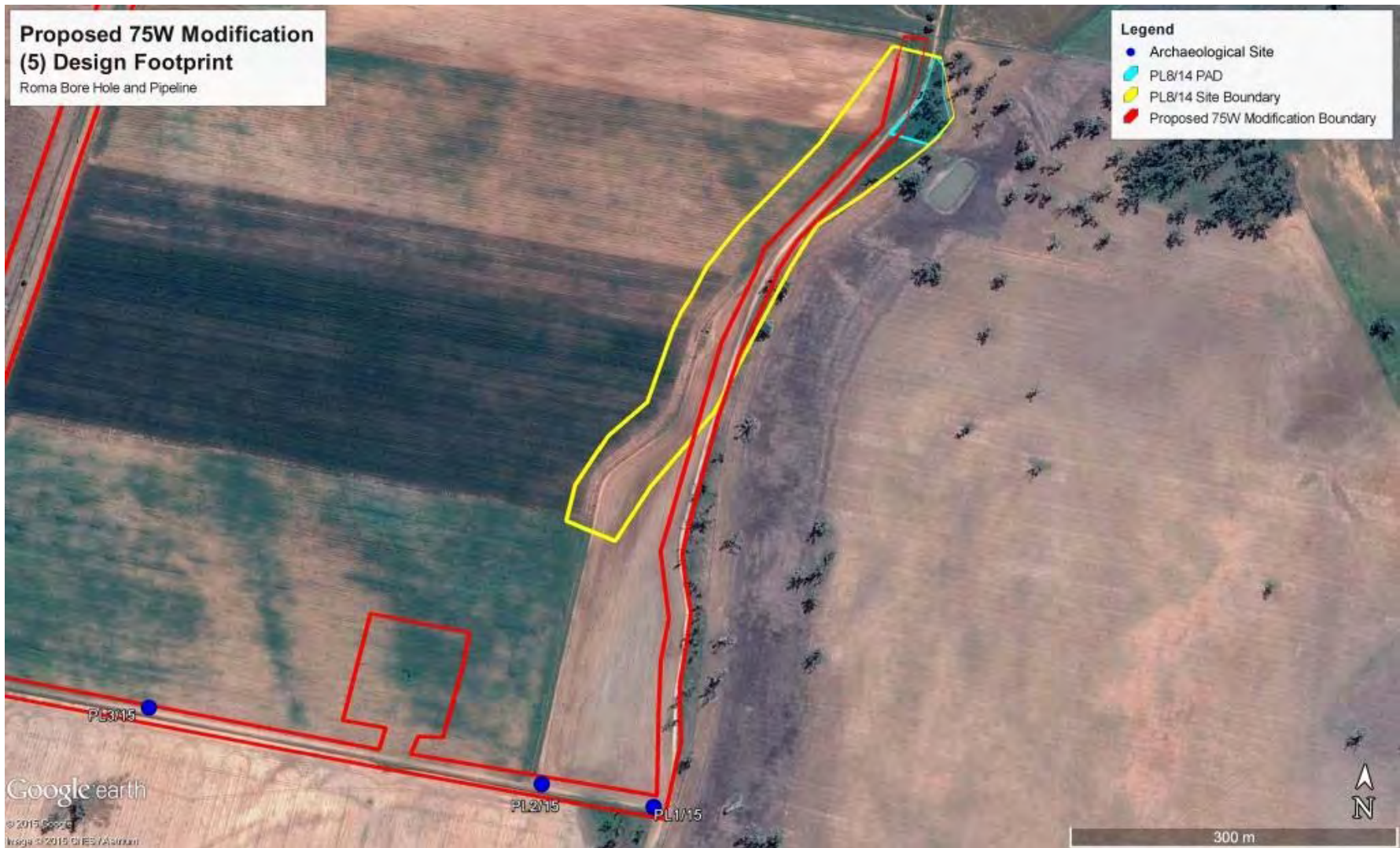


Figure 5 Item 1 – Roma Bore Hole, Pipeline and Access, Area Surveyed During Due Diligence Inspections and Sites Identified.



Figure 6 Item 2 – Cooboobindi Bore Hole, Pipeline, Power Line and Access, Area Surveyed During Due Diligence Inspections and Sites Identified.



Plate 1 Access Track at Roma Bore hole and Pipeline Facing West Toward Coobooindi



Plate 2 Access Track at Roma Bore Hole and Pipeline Facing East toward Warner's Road



Plate 3 Roma Bore Hole Facing North Showing Impact of Most Recent Ploughing



Plate 4 Roma Bore Hole and Pipeline Inspection Area Facing NE



Plate 5 Roma Bore Hole and Pipeline Inspection Area Facing South



Plate 6 Remnant River Terrace at Roma Facing NE Showing Stones Churned Up During Ploughing



Plate 7 Roma Bore Hole and Pipeline Impact Area Facing North (Taken October 2014)



Plate 8 Cooboobindi Facing South West from Bore Hole Location Showing Approximate Alignment of Power Line and Access Track in Foreground.



Plate 9 Cooboobindi Facing South West Toward PL9/14 and PL4/15 showing disturbance from ploughing, construction of drainage systems, and water runoff patterns.



Plate 10 Previous Ground Disturbance at Cooboobindi from farming activities.



Plate 11 Cooboobindi view north toward proposed pipeline route.

2.1.1.3 Item 3 - Victoria Park Bore and Pipeline

As with the Roma and Cooboobindi bores, Victoria Park requires an nearby small monitoring bore, a pipeline to deliver water to a Boggabri Coal dam and a powerline.

Victoria Park bore, pipeline and powerline were inspected in October, 2014. The current proposal varies slightly in the placement of the powerline route. It is considered, however, that the 2014 field inspection gave sufficient landscape sample on which to assess the potential for Aboriginal relics in the new route without the need for another site inspection (see Figures 7 & 8).

The field data from the inspection can be seen in Appendix B2.

On the basis of field inspection and consultation with the RAPs it was recommended that Boggabri Coal:

1. Avoid sites where possible.
2. Once the 75W application is approved amend the CHMP to include the revised project boundary.
3. Apply the CHMP to the management of the sites.

The placement of the Victoria Park bore was amended to avoid the isolated find located in that area (PL7/14).

The northern end of the pipeline will impact on two sites, an area marked as sensitive associated with NV56 which is disturbed by livestock and clearing and contains naturally outcropping cobbles likely to be a raw material source for stone artefacts (shaded area north end pipeline Figure 7). An additional disperse scatter of 8 artefacts over 50m was recorded to the south of the NV56 on exposures created by stock and vehicle disturbance. The potential for subsurface deposits is considered negligible.

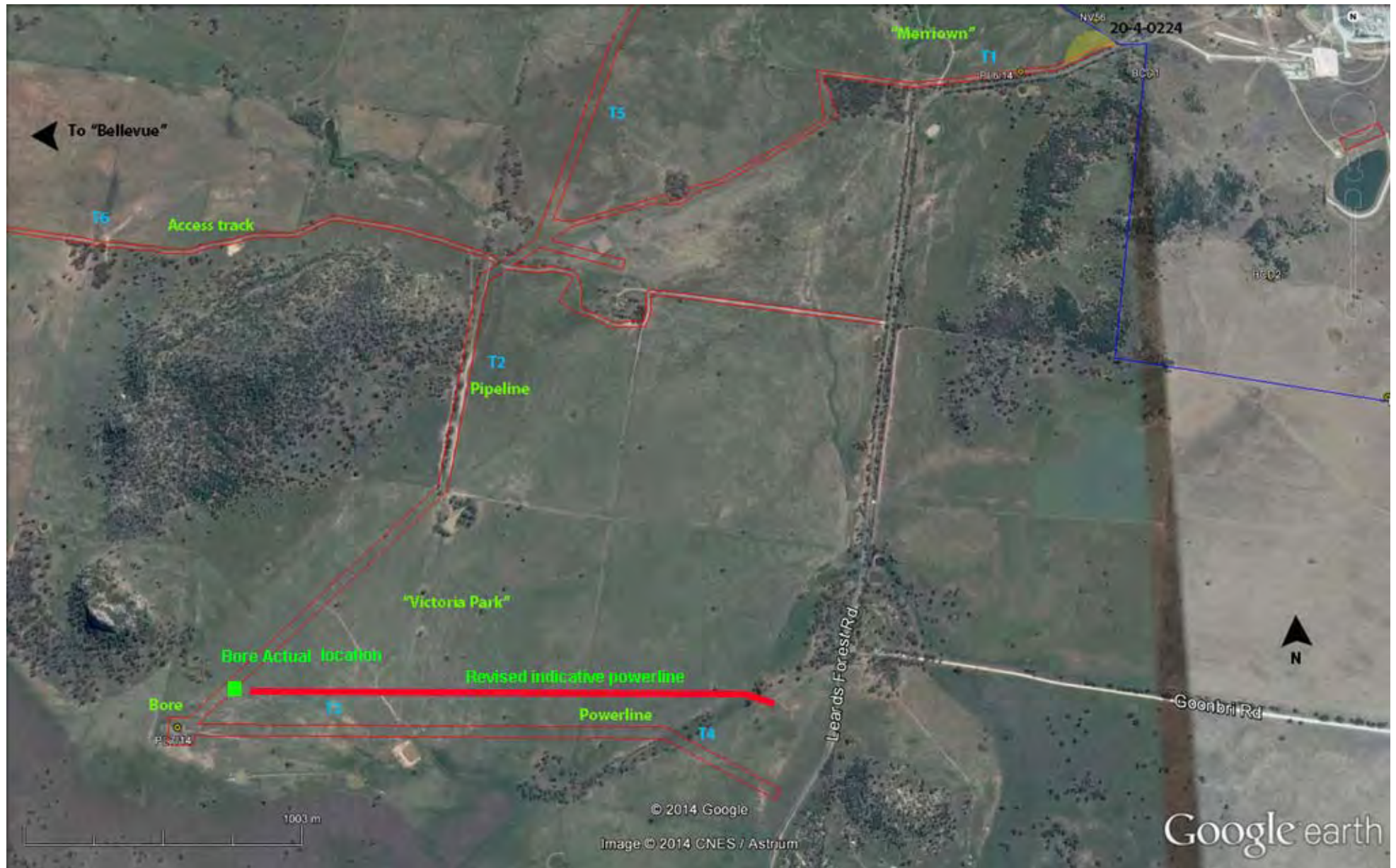


Figure 7 Route surveyed in 2014 with amended powerline route. Note T5 and T6 no longer required



Figure 8 Victoria Park actual route - blue pipeline, red power, green access

2.1.1.4 Item 4 - Bellevue Bore, Powerline and Pipeline

This pipeline, bore and powerline were inspected in January 2014 under due diligence. One artefact scatter PL1/14 was identified (details in Appendix B5).

The site PL 1/14 comprises 120 artefacts scattered over an area of 175m x 30m. The artefact positions have been recorded by Trimble and can be accurately re-located. The area had good visibility at 60 % due to the dry conditions. The location is disturbed by farming activities as evident in a very rough surface from previous ploughing and pugging by cattle in the heavy soils. The soils were cracked from the dry conditions. The artefact assemblage includes; 17 flakes, 7 broken flakes, 4 flaked pieces, 6 cores and a grinding pad. The raw materials include silcrete, IMT and chalcedony which is consistent with other sites in the area. There is no potential archaeological deposit associated with the site due to the impact of agricultural activities (Appendix B5).

A corridor around the site and within the pipeline corridor has been mapped to allow the pipeline to be lain on the surface with no impact to objects. If the pipeline requires burial the artefacts should be salvaged. There is no potential for sub-surface deposits. Figure 4 in Appendix B5, shows the route through the site which will minimise the requirement for salvage

The recommendations of the Due Diligence report include the laying of the pipe on the surface to avoid impact on any objects. Should the project modification be approved, the revised boundary will be incorporated into the CHMP and the site managed in accordance with that document.

In addition artefacts were located on the access track and powerline route between Bellevue and the Daisymede bore (Appendix B5). This access route is no longer required and the artefacts can remain in-situ.

Figure 9 below shows the location of the Bellevue infrastructure.

2.1.1.5 Item 5 – Heathcliff Bore and Auxiliary Infrastructure

The pipeline and bore infrastructure were inspected by RAPs in 2014. No artefacts were located. This general area on the floodplain of the Namoi River was subject to grader scrapes in 2013 and no artefacts located. It is not considered a sensitive landscape in terms of potential for Aboriginal objects.



Plate 12 Field inspection Bellevue pipeline



Plate 13 Inspection Victoria Park pipeline

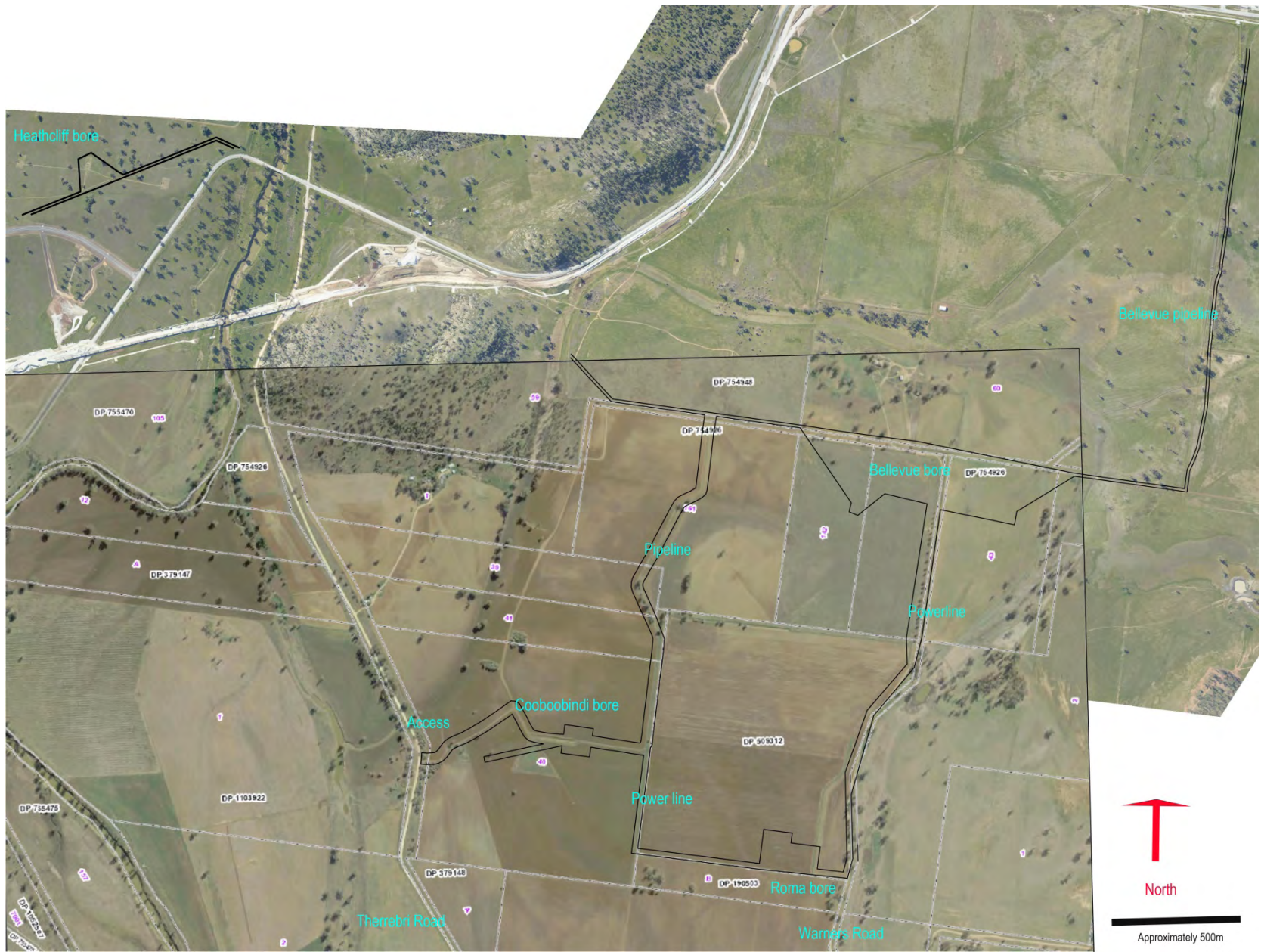


Figure 9 Location Heathcliff, Cooboobindi, Roma and Bellevue

3 Scientific Values & Significance Assessment

3.1 Significance Criteria

The basic processes of assessing significance for items of heritage are outlined by *The Australian ICOMOS Charter for the Conservation of Places of Cultural Significance: the Burra Charter* (amended 1999) and its associated *Guidelines*. Sites may be significant according to several criteria, including scientific or archaeological significance, significance to Aboriginal people, aesthetic value, the degree to which a site is representative of archaeological and/or cultural type, and value as an educational resource. In New South Wales the nature of significance relates to historic, aesthetic, social, scientific, cultural or educational criteria and sites are also assessed on the degree to which they exhibit rare or representative characteristics of their type, or whether they exhibit historic or cultural connections.

Scientific Significance

In order to determine scientific significance it is necessary to first place sites within a local and regional context. This process enables the assessment of any individual site in terms of merit against other sites of similar nature within similar contexts.

Public Significance

The sites are assessed in terms of their educational value, to enhance community knowledge and appreciation of cultural heritage.

Cultural Significance

Generally, all sites are of significance to the Aboriginal people. Cultural significance can only be determined by Aboriginal people. The registered Aboriginal parties for the project will be determining the cultural significance of the identified sites.

Representative Significance

Site significance is rated low, medium and high. The significance of individual sites is determined by factors such as representativeness, rarity, and the sites potential to add scientific data to what is known about past human occupation of the Australian continent. Conservation outcomes are determined by comparison of a site's qualities with known sites in the region that have been protected.

3.2 Scientific Significance Assessment & Management Recommendations

3.2.1 Scientific Significance Assessment

The sites located outside the current project boundary are located in disturbed contexts, resulting from farm tracks and years of ploughing and grazing. The artefacts were located on low amplitude sandy rises, remnant creek terraces, or clayey soils subject to shrink swell cycles. In all cases the proposed development is confined to previously disturbed areas such as drainage channels, access roads or heavily disturbed paddocks.

The sites are considered of low scientific significance and the information which they provide for the archaeological context of the area is unlikely to be enhanced by subsurface deposits.

3.2.2 Cultural Significance

The cultural significance of the sites should be advised by the Registered Aboriginal Parties and community members. Numerous RAPs have been involved in the site inspections and discussions in the field and at ASCF indicate that implementation of the CHMP is an appropriate management strategy.

Information regarding the 75W application has been provided to all RAPS for comment. A meeting was held on the 16th October 2014 to discuss the application. Additional information, a request for information regarding cultural values and meeting minutes were then sent to the RAPS for comment (23rd October 2014). One response was received from the GTC to the draft Modification. There have been minor amendments to the proposal subsequently. The modifications to the project were discussed with RAPs at the ASCF on the 15th April 2015. A draft of this report has been provided to RAPs for comment.

3.2.2.1 Response to issues raised

A meeting was held with the Gomeroi Traditional Custodians on the 17th November, 2014. A request was made for a site visit to the general area to help members understand the location. The site inspection which included the general bore and pipeline locations was undertaken on the 28th November, 2014.

The GTC expressed concern regarding the potential for bores to intercept megafauna remains. This concern was researched and the resultant information provided to the RAPs on the site inspection. The results of the assessment of the bores potential to impact on megafauna remains was found to be low as explained in the extract from the information provided below:

Megafauna remains have been found in a variety of contexts such as sand dunes, creek terraces, caves, and swamps. Australian Megafauna remains have to this date been found primarily in Cave Sites (rock shelters) and areas which were historically once well watered such as the base of springs or Paleo-lakes.

Lime Springs and Trinkey are both located within spring fed swamps, approximately 13 kilometres to the south west of Goran Lake. The site is located within a basin like valley which drains into Lake Goran.

Cuddie Springs is located within a clay pan, on the floor of a Paleo-lake. Aerial photographs show the remains of a stream which may have fed the lake in ancient times (Dodson, et al. 1993:124).

The presence of potential Pleistocene river terraces within close proximity to the proposed 75W Modification (5) Project Boundary indicates that there is a moderate chance of the discovery of Pleistocene archaeological deposits.

The landscape associated with the potential Pleistocene river terraces however, does not reflect the landscape features associated with the two Megafauna sites located within North western NSW.

The migration of the Namoi River across the Namoi Flood Plain, indicates that the likelihood of the survival of Megafauna remains is low.

The type of works proposed by Boggabri Coal Pty Ltd within this area, are also considered to be minimal in nature. In order to locate Megafauna / Aboriginal occupation sites, we would need to do an open area excavation in an area that is likely to contain remains (that is paleo lake / spring areas). The boring of the water bores is a very small sample and it is unlikely that the core holes will be large enough to intercept Megafauna remains. As the bores do not produce a core sample – rather a slurry, it is unlikely that Megafauna bones would be identifiable in the bore spoil.

An ASCF was held on the 18th November, 2014 to which all RAPs were invited. The RAPs that attended the meeting did not raise any other cultural values (other than site inspection findings) and whilst not supporting any expansion to the project boundary, did generally agree with application of the CHMP methodology for site management to the revised project boundary should Mod 5 be approved (Appendix E & F).

3.3 Aboriginal Cultural Heritage

The proposed bores and pipelines and associated access tracks will impact on some of the sites recorded during the due diligence assessments. The sites are all located in disturbed contexts, in heavily farmed areas. In consultation with the projects RAPs it is considered appropriate to manage the sites in accordance with the CHMP, that is avoid where possible, fence off where located close to works, or salvage if necessary. Any salvage works would be carried out as per the salvage methodology that has been endorsed by most RAPs.

4 Recommendations

It is recommended that if the Modification 5 is approved, the CHMP be updated to incorporate the revised project boundary and all sites within the boundary be managed in accordance with the CHMP management / salvage / conservation policies and processes.

Table 1 in Section 2 details the sites identified during the due diligence inspections and the management recommendations for each site.

References

ARAS	2005	<i>Boggabri Coal Aboriginal Archaeology Assessment</i> Unpublished report to Boggabri Coal.
ARAS	2007	<i>Boggabri Coal Salvage Report.</i> Unpublished report to Boggabri Coal.
Dodson. J., Fullagar. R., Furby. J., Jones. R., and Prosser. I.	1993	Humans and Megafauna in a Late Pleistocene Environment from Cuddie Springs, North Western New South Wales. <u><i>Archaeology in Oceania</i></u> , Vol. 28, No. 2 (Jul., 1993), pp. 94-99.
Gorecki, P., Horton, D., Stern, N., and Wright. R.	1984	Coexistence of Humans and Megafauna in Australia: Improved Stratified Evidence. <u><i>Archaeology in Oceania</i></u> , Vol. 19, No. 3 (Oct., 1984), pp. 117-119.
Hansen Bailey	2010	<i>Continuation of Boggabri Coal Mine Environmental Assessment.</i> Unpublished report by Hansen Bailey to Idemitsu Boggabri Coal Pty Ltd.
Insite Heritage.	2010	<i>Aboriginal Archaeological Assessment. Continuation of Mining Boggabri Coal.</i> Unpublished report by Insite Heritage Pty Ltd to Idemitsu Boggabri Coal Ltd.
Insite Heritage	2014	<i>Boggabri Coal Part 3A Cultural Heritage Management Plan (CHMP).</i> Unpublished report by Insite Heritage Pty Ltd to Idemitsu Boggabri Coal Ltd.
Mulvaney, J., and Kamminga, J.	1999	Prehistory of Australia. Allen & Unwin. St Leonards.
Wright, R.	1987	<i>New light on the extinction of the Australian Megafauna.</i> Proceedings of the Linnean Society of New South Wales. Vol 109, (Nos 477-480; for 1986-87). Sydney.
Queensland Museum		http://www.qm.qld.gov.au/Find+out+about/Dinosaurs+and+Ancient+Life+of+Queensland/Megafauna#.VHQBBYuUd7g (Accessed 25/11/2014)
Museum Victoria		http://museumvictoria.com.au/about/mv-blog/apr-2012/what-does-megafauna-mean/ (Accessed 25/11/2014)

Appendix A - AHIMS Search

Appendix A1 -BCP Pipeline and bore sites



AHIMS Web Services (AWS) Search Result

Your Ref Number : BCP/L

Client Service ID : 125548

Insite Heritage Pty Ltd
Po Box 98
Wangi Wangi New South Wales 2267
Attention: Elizabeth Wyatt
Email: liwyatt@insiteheritage.com.au

Date: 18 February 2014

Dear Sir or Madam:

AHIMS Web Service search for the following area at Datum :GDA, Zone : 56, Eastings : 219688 - 220590, Northings : 6607202 - 6608040 with a Buffer of 50 meters, conducted by Elizabeth Wyatt on 18 February 2014.

The context area of your search is shown in the map below. Please note that the map does not accurately display the exact boundaries of the search as defined in the paragraph above. The map is to be used for general reference purposes only.



A search of the Office of the Environment and Heritage AHIMS Web Services (Aboriginal Heritage Information Management System) has shown that:

0	Aboriginal sites are recorded in or near the above location.
0	Aboriginal places have been declared in or near the above location.*

Appendix A2 - Bellevue Powerline and Access



AHIMS Web Services (AWS) Search Result

Your Ref Number: BEP Bellevue P/line
Client Service ID: 135145

Insite Heritage Pty Ltd
Po Box 98
WangiWangi New South Wales 2267
Attention: Angela Besant
Email: angela@insiteheritage.com.au

Date: 19 May 2014

Dear Sir or Madam:

AHIMS Web Service search for the following area at Datum :GDA, Zone : 56, Eastings : 217000 - 219500, Northings : 6606500 - 6607500 with a Buffer of 50 meters, conducted by Angela Besant on 19 May 2014.


The context area of your search is shown in the map below. Please note that the map does not accurately display the exact boundaries of the search as defined in the paragraph above. The map is to be used for general reference purposes only.



A search of the Office of the Environment and Heritage AHIMS Web Services (Aboriginal Heritage Information Management System) has shown that:

0	Aboriginal sites are recorded in or near the above location.
0	Aboriginal places have been declared in or near the above location. *

Appendix A3 - Victoria Park and Cooboobindi Bores, powerlines and pipelines and Revised bore location Roma and Victoria Park



Office of
Environment
& Heritage

AHIMS Web Services (AWS)
Search Result


Your Ref Number : ppe/m
Client Service ID : 150331
Date: 09 October 2014

Insite Heritage Pty Ltd
 Po Box 98
 Wangi Wangi New South Wales 2267
 Attention: Taryn Gookey
 Email: taryn@insiteheritage.com.au

Dear Sir or Madam:

AHIMS Web Service search for the following area at Datum :GDA, Zone :56, Eastings : 217012 - 220792, Northings : 6604990 - 6607311 with a Buffer of 50 meters, conducted by Taryn Gookey on 09 October 2014.

The context area of your search is shown in the map below. Please note that the map does not accurately display the exact boundaries of the search as defined in the paragraph above. The map is to be used for general reference purposes only.



A search of the Office of the Environment and Heritage AHIMS Web Services (Aboriginal Heritage Information Management System) has shown that:

1	Aboriginal sites are recorded in or near the above location.
0	Aboriginal places have been declared in or near the above location.*

Figure 4 Roma Bore Holes and Pipeline AHIMS Search

Site ID	Site Name	State	County	Localities	Country	Site Type	Site Status	Site Class	Notes
100001	100001	NSW	100001	100001	100001	100001	100001	100001	100001

Figure 5 Roma Bore Holes and Pipeline Extensive AHIMS Search Results

Insite Heritage Pty Ltd
Po Box 98
Wangl Wangl New South Wales 2267
Attention: Taryn Gookey
Email: taryn@insiteheritage.com.au

Date: 09 October 2014

Dear Sir or Madam:

AHIMS Web Service search for the following area at Datum: GDA, Zone: 56, Eastings: 221038 - 224583, Northings: 6604236 - 6607206 with a Buffer of 50 meters, conducted by Taryn Gookey on 09 October 2014.

The context area of your search is shown in the map below. Please note that the map does not accurately display the exact boundaries of the search as defined in the paragraph above. The map is to be used for general reference purposes only.



A search of the Office of the Environment and Heritage AHIMS Web Services (Aboriginal Heritage Information Management System) has shown that:

0 Aboriginal sites are recorded in or near the above location.
0 Aboriginal places have been declared in or near the above location.*

Figure 6 Victoria Park Bore Hole AHIMS Search

Insite Heritage Pty Ltd
Po Box 98
Wangi Wangi New South Wales 2267
Attention: Elizabeth Wyatt
Email: lizwyatt@insiteheritage.com.au

Date: 18 February 2014

Dear Sir or Madam:

AHIMS Web Service search for the following area at Datum :GDA, Zone :56, Eastings : 219688 - 220590, Northings : 6607202 - 6608040 with a Buffer of 50 meters, conducted by Elizabeth Wyatt on 18 February 2014.

The context area of your search is shown in the map below. Please note that the map does not accurately display the exact boundaries of the search as defined in the paragraph above. The map is to be used for general reference purposes only.



A search of the Office of the Environment and Heritage AHIMS Web Services (Aboriginal Heritage Information Management System) has shown that:

0	Aboriginal sites are recorded in or near the above location.
0	Aboriginal places have been declared in or near the above location.*

Appendix B - Due Diligence Reports

All figures, plates, and tables within the due diligence reports retain the original numbering allocated when submitted to BCPL.

Appendix B1 - BCP Pipeline and bore sites



INSITE HERITAGE
PTY LTD

PO Box 98
Wangi Wangi NSW 2267
admin@insiteheritage.com.au
P/F 0249755818
ABN 70 110 716 080

18th March 2014

Due Diligence Inspection BCP Pipeline and Bore sites

Re: Due Diligence Aboriginal Archaeological Assessment of the Proposed Pipeline and Borehole Sites

Boggabri Coal Idemitsu Australia Pty Ltd propose to build a pipeline to connect bores to an existing dam. The pipeline will be on the surface and is 90mm & 160mm in diameter. The bores have a footprint of 5x5 metres. The pipeline is located outside the Boggabri Coal project boundary therefore is not covered by the Boggabri Coal CHMP. The project is located in "Bellevue" a property set aside as a biodiversity offset. The corridor for the pipeline and bores has been excised from the biodiversity offset area.

As the proposed works are not included in those activities defined as a low impact activity for which there is a defence in the NPW Regulation (OEH 2010), a due diligence field survey was conducted of the entire route and bore locations with RAPs from the Boggabri Coal stakeholder list.

The due diligence assessment included a site inspection by Insite Heritage Pty Ltd (archaeologists, Angela Besant and Rob Tickle) and Aboriginal stakeholder representatives (Cyril Sampson, George Sampson, Wayne Griffiths and Sonny Fitzroy).

Generic Due Diligence Assessment – Based on Office of Environment & Heritage (OEH) Due Diligence Code of Practice for the Protection of Aboriginal Objects in New South Wales (2010).

Step 1. Will the activity disturb the ground surface or any culturally modified trees?

The construction of the bores will disturb the ground in an area of 5m x 5m. The pipeline will be placed on the ground and crossings constructed of imported material.

Step 2 a) Are there any relevant confirmed site records or other associated landscape feature on AHIMS

A search of the Aboriginal Heritage Information Management System (AHIMS) was undertaken for the subject site in order to identify if there are any previously recorded Aboriginal archaeological sites within the project area. No sites have been recorded in the area (see attachments 1 & 2).

Step 2 b) Are there any landscape features that are likely to indicate presence of Aboriginal objects.

There are no landscape features, however historically there may have been gilgais in the area that have been obscured by ploughing and grazing. The pipeline is located on a plain.

Step 3. Can harm to Aboriginal object listed on AHIMS or identified by other sources of information and /or can the carrying out of the activity at the relevant landscape features be avoided.

1

The pipeline route is constrained by the boundary of land excised from the biodiversity offset land. As the pipeline is located on the surface and disturbance will be minimal there is the potential to avoid impact on specific objects.

Step 4. Does a desktop assessment and visual inspection confirm that there are Aboriginal objects?

The site inspection located an open scatter in the route of the pipeline. The site extends beyond the corridor excised for the pipeline from the biodiversity offset lands (Figure 1).

The site PL 1/14 comprises 120 artefacts scattered over an area of 175m x 30m. The artefact positions have been recorded by Trimble and can be accurately re-located. The area had good visibility at 60 % due to the dry conditions. The location is disturbed by farming activities as evident in a very rough surface from previous ploughing and pugging by cattle in the heavy soils. The soils were cracked from the dry conditions. The artefact assemblage includes; 17 flakes, 7 broken flakes, 4 flaked pieces, 6 cores and a grinding pad. The raw materials include silcrete, IMT and chalcedony which is consistent with other sites in the area.



Plate 1 The grinding pad PL1/14.

Management Recommendations

It is recommended that Boggabri Coal undertake the following:

1. Investigate the potential for the pipeline to run through the site without impacting on any Aboriginal objects. There is an approximately 2-3 metre corridor on the boundary of the site in which the pipeline could be laid and avoid all objects. Place the pipeline on chocks to keep it above the ground would also prevent impact to any objects just below the surface (see Figure 2).
2. Apply for an AHIP to move the objects from the pipeline route and place them in the biodiversity offset area. This will require a time frame of 3-4 months, a renewed consultation process and an Aboriginal Cultural Heritage Assessment Report.
3. Modify the boundary of the excised area to allow the pipeline to go around the site. This process is also likely to take many months.

If at a later date Boggabri Coal decide to bury the pipeline, an AHIP should be sought for this site.

If you have any queries please don't hesitate to contact me on the numbers above.

Regards,
Insite Heritage Pty Ltd

A handwritten signature in cursive script that reads "Angela Besant".

Angela Besant
Archaeologist

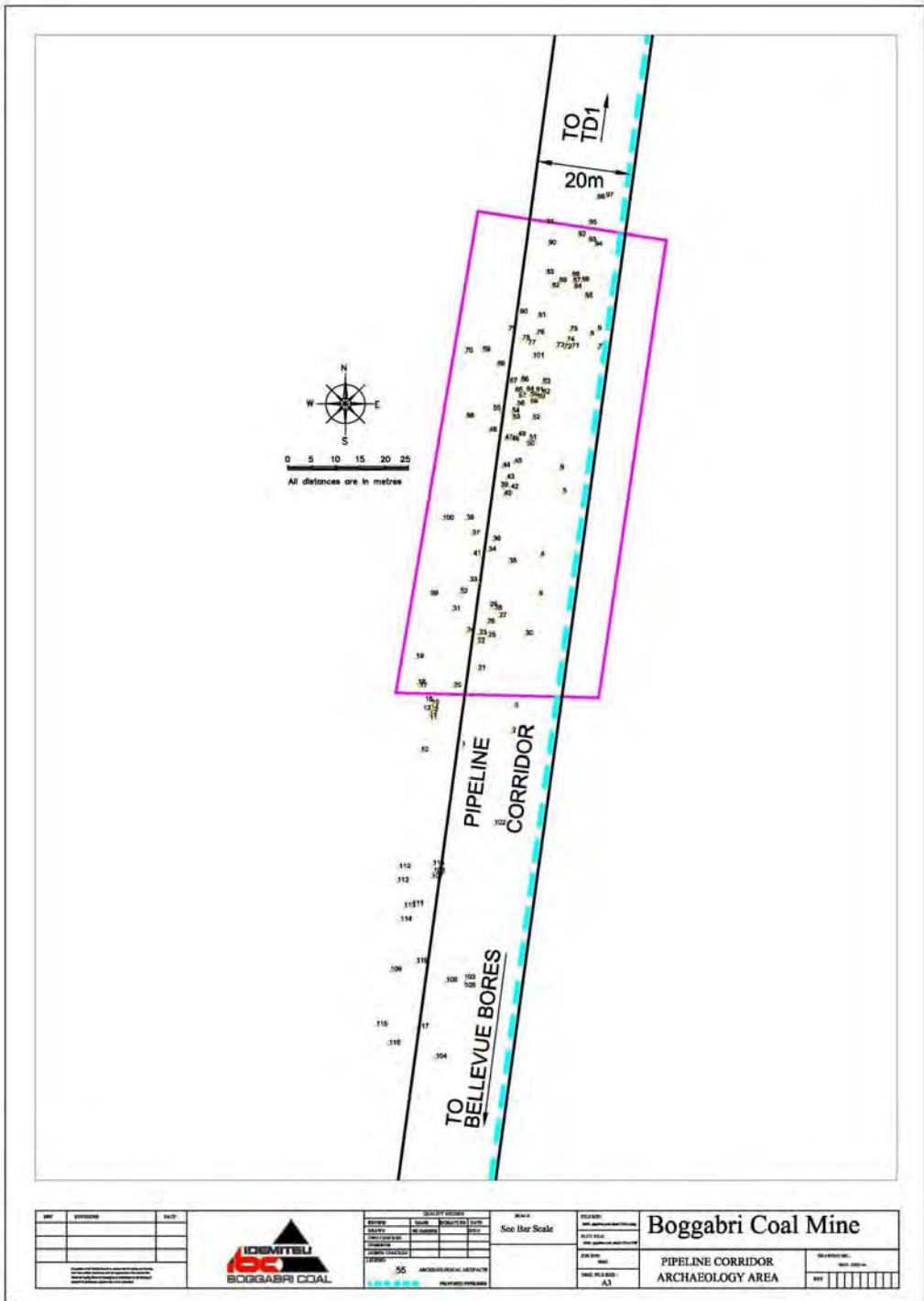




Figure 1 The boundaries of the site located on the route.

Attachment 1 – AIMS search result.

Insite Heritage Pty Ltd
Po Box 98
WangiWangi New South Wales 2267
Attention: Elizabeth Wyatt
Email: lizwyatt@insiteheritage.com.au

Date: 18 February 2014

Dear Sir or Madam:

AHIMS Web Service search for the following area at Datum :GDA, Zone :56, Eastings :2 19688 - 2 20590, Northings : 66 07202 - 66 08040 with a Buffer of 50 meters, conducted by Elizabeth Wyatt on 18 February 2014.

The context area of your search is shown in the map below. Please note that the map does not accurately display the exact boundaries of the search as defined in the paragraph above. The map is to be used for general reference purposes only.



A search of the Office of the Environment and Heritage AHIMS Web Services (Aboriginal Heritage Information Management System) has shown that:

0	Aboriginal sites are recorded in or near the above location.
0	Aboriginal places have been declared in or near the above location.*

Appendix B2 - Victoria Park and Cooboobindi Bores, powerlines and pipelines



INSITE HERITAGE

PTY LTD

PO Box 98

Wangj Wangj NSW 2267

admin@insiteheritage.com.au

P/F 0249755818

ABN 70 110 716 080

22nd October 2014

Due Diligence Inspection BCP Pipeline and Bore sites – Victoria Park and Cooboobindi

Boggabri Coal Idemitsu Australia Pty Ltd propose to build a pipeline to connect bores to an existing dam. The pipeline will be generally located on the surface, except where burial is required due to its location on the floodplain. The pipeline is 90mm & 160mm in diameter. The bores have a footprint of 5x5 metres. The pipeline is located outside the Boggabri Coal project boundary therefore is not covered by the Boggabri Coal CHMP, however the proposed activity is subject to a 75W Application. The application seeks to modify the project boundary and if approved the revised boundary will be incorporated in to the Cultural Heritage Management Plan (CHMP). The management of the proposed infrastructure projects shall then be in accordance with the CHMP.

As the proposed works are not included in those activities defined as a low impact activity for which there is a defence in the NPW Regulation (OEH 2010), a due diligence field survey was conducted of the entire route and bore locations with RAPs from the Boggabri Coal stakeholder list.

The due diligence assessment included a site inspection by Insite Heritage Pty Ltd (Angela Besant) and Aboriginal stakeholder representatives (David Horton and Mitchum Neves – for Deslee Talbott).

Generic Due Diligence Assessment – Based on Office of Environment & Heritage (OEH) Due Diligence Code of Practice for the Protection of Aboriginal Objects in New South Wales (2010).

Step 1. Will the activity disturb the ground surface or any culturally modified trees?

The construction of the bores will disturb the ground in an area of 5m x 5m. The pipeline will disturb the ground in sections that require burial due to its location on the floodplain or for crossing points. The remaining areas shall have the pipeline placed on the ground.

Step 2 a) Are there any relevant confirmed site records or other associated landscape feature on AHIMS

A search of the Aboriginal Heritage Information Management System (AHIMS) was undertaken for the subject site in order to identify if there are any previously recorded Aboriginal archaeological sites within the project area. One site appears on the register in the search of Bellevue and Cooboobindi, PL1/14 (20-4-0527) which was identified in the due diligence inspection of the Bellevue bore and pipeline. One site (20-4-0198 or BCD1) appears in the search of the Merriown and Victoria Park AHIMS search. This site is located on the southern side of the entry to Boggabri Coal on the opposite side of Leards Forest Road to the proposed pipeline (see Appendix A of the 75W report).

1

Step 2 b) Are there any landscape features that are likely to indicate presence of Aboriginal objects.

At the Coobooobindi end of the proposed works there are landscape features probably dating to the Pleistocene¹ is a billabong feature. The margins of the billabong have been excavated to create a drain 5m wide and 2.5 metres deep. The pipeline would be laid in the base of the drain and the access track would be placed on the material excavated from the drain which forms a broad edge to the drain.

Within Bellevue and Roma are paleochannels that Mitchell believes may date to the Pleistocene. In areas near these features there are small Aeolian dunes. The sandy soils of these features are associated with higher artefact frequency. The artefacts located on the Bellevue access road are located on such a feature.

The proposed pipeline is located near these potential focal features in the landscape, however the proposed works is located on very disturbed ground within these areas and are unlikely to impact on any in-situ deposits.

¹ Mitchell, P. 2007 in ARAS Boggabri Coal Salvage Report (p26)

Step 3. Can harm to Aboriginal object listed on AHIMS or identified by other sources of information and /or can the carrying out of the activity at the relevant landscape features be avoided.

The bores and infrastructure are constrained by the boundary of land excised from the biodiversity offset land and / or constraints on access to private land. The majority of the pipeline is located on the surface and will not require ground disturbance. However sections will require burial and these sections will avoid Aboriginal objects where possible. If an object cannot be avoided the salvage methodology detailed in the CHMP will be applied.

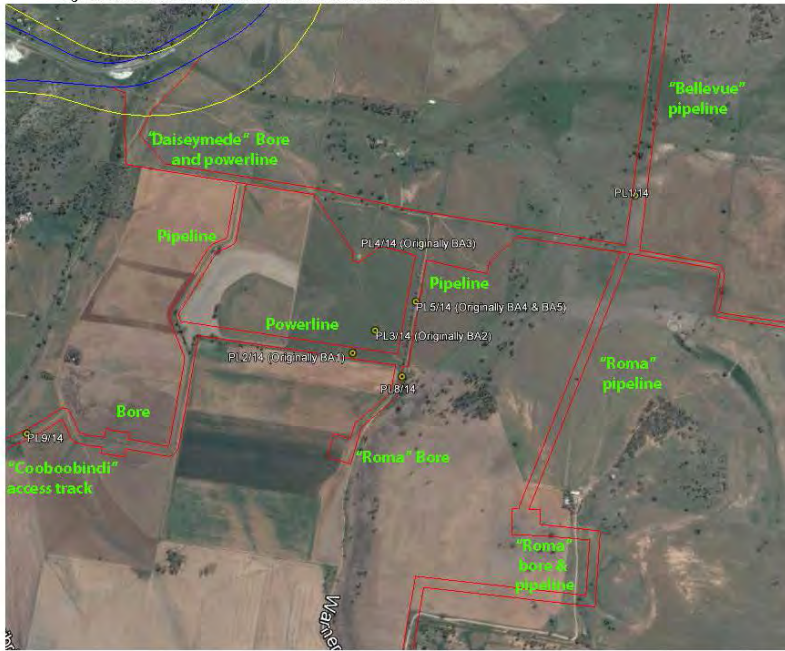
Step 4. Does a desktop assessment and visual inspection confirm that there are Aboriginal objects?

The site inspection located an open scatter on the access road to Bellevue (see the Bellevue due diligence report) which continues to the south on the access road to Bellevue. In addition artefacts were recorded on the access road to Cooboobindi from Theribri Road (see Figure 2 and Table 1).

Table 1 Cooboobindi inspection

Transect	Context	Area	Surface Visibility	Arch Visibility	Cover	Sites
Cooboobindi Track and bore	Access track and wheat paddock	750m x 30	20 - 100%	90%	0.81ha	PL9/14
Cooboobindi pipeline	Located in highly disturbed trench not inspected.					
Roma bores and pipelines	Short section of public road inspected	50 x 8 m	90%	100%	360 sqm	PL 8/14
Bellevue	Powerlines etc in Bellevue due diligence report					

Figure 2 Sites located Coobooindi and access road to Bellevue



5

Table 2 Sites located Coobooindi, Victoria Park and access road to Bellevue

Site Name	Easting	Northing	Context	Content	Exposure		
PL2/14	218880	6606632	Isolated artefact located in farmed paddock in low lying area.	Flake IMT green 37x26x5 Stepped termination	2x2m	60%	80%
PL3/14	218971	6606730	Isolated artefact located in farmed paddock in low lying area.	Flake Chalcedony 12x15x4	2x2m	60%	80%
PL4/14	219160	6607098	Isolated artefact located in farmed paddock in low lying area.	Flake IMT orange brown 25x22x4 Crushed platform	2x2m	60%	80%
PL5/14	219139	6606857	Two artefacts located in farmed paddock in low lying area.	Flake IMT grey banded 54x35x17 Prox face fresh, dorsal right patinated, dorsal left heavily patinated. 219141, 6506878	2x2m	60%	80%
				Flake Silcrete cream 27x30x5 Crushed platform, hinge termination. 219136, 6606841			
PL6/14	224937	6607555	Part disperse scatter located on Merriown parallel with LF Rd	Flake Grey IMT 21x22x5 edge damage 224734, 6607529	50m x 3m		
				Core, chalcedony, retouched distal margin 40x30x20, 224723, 6607518			
				Flake Cream IMT 19x12x4, 224732, 6607519			
				Core Chalcedony retouched scraper 40x50x20; 224937, 6607555			
				Flake Chalcedony 10x15x3; 224770, 6607526			
				Flake chalcedony fauceted bifacial 29x10x7; 225006, 6607566			
				Core chalcedony orange 4 neg scars ; 225070, 6607574			
PL7/14	221761	6604864	IF Located on Victoria Park bore	Flake, Silcrete, 16x18x7	4m x 30m	50%	50%
PL8/14	219089	6606539	Disperse Scatter on access road to Bellevue	Core IMT 21x30x25 8 neg scars, retouched left and right margin, cortex platform 15x10, distal 80% cortex cream grey. 219092, 6606553	30m x 10m	90%	80%
				Core IMT 25x30x30 light brown, 10 neg scars, pebble cortex 70%; 219086,			

6

				6606528			
				Flake IMT cream grey 1.5m sth-west of above. 30x18x10 retouched; 219086, 6606528			
PL9/14	217547	6606262	Disperse scatter on access road to Coobooobindi.	Flake IMT grey 40x27x8; 217454, 6606205	35 x 3m	90%	90%
				Flake prox + mid, grey chert; 217547, 6606262			
				Flake Prox grey brown chert 11x16x4; 217656, 6606330			
				Grey banded chert pressure flake 10x20x7; 217656 6606330			
				Flake prox + mid grey IMT 14x11x6; 217676, 6606346			

7

Figure 3 Field inspection area Victoria Park and Merriwon



8

Table 3 Survey details Victoria Park

Transect	Context	Area	Surface Visibility	Arch Visibility	Coverage	Sites
T1	Merriown paddock and Victoria Park Park	2.75km x 30m	Av 50%	80%	3.3 ha	1 NV56 PL 6/14
T2	Victoria Park Paddock	2 km x 40m	Av 50%	90%	3.6 ha	PL 7/14
T3	Victoria Park Paddock	1.1km x 40m	Av 50%	90%	1.98 ha	No
T4	Victoria Park Paddock Dense ground cover	1km	0%	0%	0	N/A
T5	Victoria Park Paddock	1km x 30m	2%	90%	0.54 m2	No
T6	Existing access track – Leard Forest road to Bellevue via Victoria Park	4km x 40m	0 – 90% Sections resurfaced	90%	6.48 ha	No

Management Recommendations

It is recommended that Boggabri Coal undertake the following:

1. Avoid sites where possible.
2. Once the 75W application is approved amend the CHMP to include the revised project boundary.
3. Apply the CHMP to the management of the sites.

If you have any queries please don't hesitate to contact me on the numbers above.

Regards,
Insite Heritage Pty Ltd

Angela Besant
Archaeologist

Appendix B3 - Revised bore location Roma and Victoria Park



PO Box 98
Wangi Wangi NSW 2267
admin@insiteheritage.com.au
P/F 0249755818
ABN 70 110 716 080

3rd November 2014,

Due Diligence Inspection BCEP Pipeline and Bore Hole sites – Victoria Park and Roma Bores 1 & 2.

Boggabri Coal Idemitsu Australia Pty Ltd propose to build a pipeline to connect bores to an existing dam. The pipeline will be located on the surface, except where burial is required due to its location on the floodplain. The pipeline is 90mm & 160mm in diameter. The bores have a footprint of 5x5 metres. The pipeline is located outside the Boggabri Coal project boundary and therefore is not covered by the Boggabri Coal CHMP; however the proposed activity is subject to a 75W Application. The application seeks to modify the project boundary and if approved the revised boundary will be incorporated in to the Cultural Heritage Management Plan (CHMP) and sites within the boundary managed accordingly.

As the proposed works are not included in those activities defined as a low impact activity for which there is a defence in the NPW Regulation (OEH 2010), a due diligence field survey was conducted of the entire route and bore locations with RAPs from the Boggabri Coal stakeholder list.

The due diligence assessment was conducted on Wednesday 29th October 2014 and included a site inspection by Insite Heritage Pty Ltd (archaeologist, Taryn Gooley) and Aboriginal stakeholder representatives (Tracey Wortley – Representing Bullem Bullem Elders, and Mitchum Neaves – representing Reg Talbott).

Generic Due Diligence Assessment – Based on Office of Environment & Heritage (OEH) Due Diligence Code of Practice for the Protection of Aboriginal Objects in New South Wales (2010).

Step 1. Will the activity disturb the ground surface or any culturally modified trees?

The construction of the bores will disturb the ground in an area of 5m x 5m. The pipeline will disturb the ground in sections that require burial due to its location on the floodplain or for crossing points. The remaining areas shall have the pipeline placed on the ground.

Step 2 a) Are there any relevant confirmed site records or other associated landscape features on AHIMS

A search of the Aboriginal Heritage Information Management System (AHIMS) was undertaken for the subject site in order to identify if there are any previously recorded

Aboriginal archaeological sites within the project area. One site appears on the register in the search, PL1/14 (20-4-0527) which was identified in the due diligence inspection of the Bellevue bore and pipeline. Five sites (PL2/14, PL3/14, PL4/14, PL5/14 & PL8/14) were recently recorded during a due diligence inspection for the original alignment of the Roma Bore hole and pipeline. The sites are located between 10m-500m to the north of the revised proposed Roma 1 & 2 bore holes and pipeline subject to this Due Diligence assessment.

One site (20-4-0198 or BCD1) appears in the search of the Victoria Park AHIMS search. This site is located on the southern side of the entry to Boggabri Coal on the opposite side of Leard Forest Road to the proposed pipeline (see Appendix A of the 75W report). One site (PL7/14) was recorded during a recent due diligence inspection of the original alignment of the proposed Victoria Park bore hole and pipeline. PL7/14 is located approximately 170m to the south west of the revised Victoria Park Borehole alignment.

Step 2 b) Are there any landscape features that are likely to indicate presence of Aboriginal objects.

Paleochannels that Mitchell believes may date to the Pleistocene are located within the properties "Bellevue" and "Roma".¹ In areas near these features there are small Aeolian dunes. The sandy soils of these features are associated with higher artefact frequency.

The proposed bore holes and pipeline are located near these potential focal features in the landscape; however the proposed works is located on very disturbed ground within these areas and is therefore unlikely to impact on any in-situ deposits.

Step 3. Can harm to Aboriginal object listed on AHIMS or identified by other sources of information and /or can the carrying out of the activity at the relevant landscape features be avoided.

The bores and infrastructure are constrained by the boundary of land excised from the biodiversity offset land and / or constraints on access to private land. The majority of the pipeline is located on the surface and will not require ground disturbance. However sections will require burial and these sections will avoid Aboriginal objects where possible. If an object cannot be avoided the salvage methodology detailed in the CHMP will be applied.

Step 4. Does a desktop assessment and visual inspection confirm that there are Aboriginal objects?

Proposed Roma Bore Holes and Pipeline

A due diligence assessment of the original Roma bore hole and pipeline alignment located a site to the north east of the subject site (PL8/14).

The site inspection conducted for the purpose of this due diligence assessment identified a disperse scatter of artefacts on the access road (Warner's Road) which extends west into the proposed Roma 1 & 2 borehole and pipeline impact area. This disperse scatter of artefacts is a continuation of site PL8/14 (Figure 2).

An area with the potential for subsurface archaeological deposit (PAD) was also identified to the north east of the proposed impact area but will not be impacted on by the proposed works (Refer to Figure 3).

¹ Mitchell, P. 2007 in ARAS Boggabri Coal Salvage Report (p26)

Table 1 Proposed Roma Bore Holes and Pipeline Survey Coordinates

Easting	Northing
219073	6606586
219096	6606582
219068	6606501
219039	6606499
218882	6606247
218847	6606123
218784	6606068
218754	6605838
218593	6605866
218595	6605881
218732	6605865
218758	6606071
218766	6606089
218825	6606141
218867	6606274

The proposed Roma 1 & 2 Bore holes and pipeline is located adjacent to Warner's Rd as well as a remnant river terrace which may date to the Pleistocene period.²

The subject site follows the general alignment of the remnant river terrace and is located at a distance between ~20-130m to the west of the remnant river terrace (Plates 1-4).

The subject site has been heavily disturbed by farming activities such as the construction of contour banks and ploughing. A dam has been constructed toward the north eastern end of the subject site. The subject site is heavily cattle pugged.

A wheat crop is currently growing throughout the subject site. Deep cracks and lines from ploughing were noted throughout the subject site (Plate 5). Water worn pebbles had been churned up during the ploughing process. A large mussel shell was also noted in this area.

Eight artefacts were identified along the survey area adjacent to the road. 2 artefacts were located on a contour bank (refer to Table 2 for artefact details).

Artefacts have been noted on the road but were not recorded in detail in this instance, as they were located outside the area of impact.

Surface visibility ranged from between 60-0% with the majority of the survey area having very low ~10% surface visibility.

The RAP representatives present during the due diligence survey have requested that grader scrapes be carried out prior to works beginning.

² Mitchell, P. 2007 in ARAS Boggabri Coal Salvage Report (p26)



Figure 1 Proposed Roma Boreholes and Pipeline Survey Area

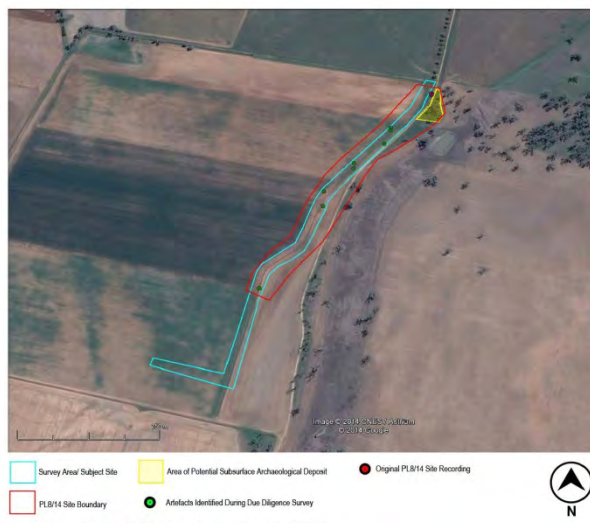


Figure 2 PL8/14 Site Boundary and Area of Potential Archaeological Deposit (PAD)

Table 2 Artefact Details

Artefact	Easting	Northing	Description
1	218990	6606396	BF, (Long). Brown Chert, Errallier Scar. 40x20x7mm
2	218929	6606325	Flake. Brown IMT. 37x30x10mm
3	218874	6606228	BF (Distal). White IMT. 80x50x40mm
4	218770	6606033	BF (Prox). Opaque Chalcedony. Broad PF. 20x20x7mm
5	218870	6606264	BF (Prox). Brown IMT. Broad PF. 20x20x7mm
6	218870	6606264	Flake. Cream IMT. Hinge Term. 60x30x10mm
7	219002	6606434	Flake. Brown IMT. Wide PF. 45x35x15mm
8	219002	6606440	BF (Prox). Brown chert. Focal PF. 15x30x10mm

Table 3 Area of potential subsurface archaeological deposit (PAD) Co ordinates

Easting	Northing
219105	6606471
219070	6606489
219114	6606493
219110	6606544
219097	6606558

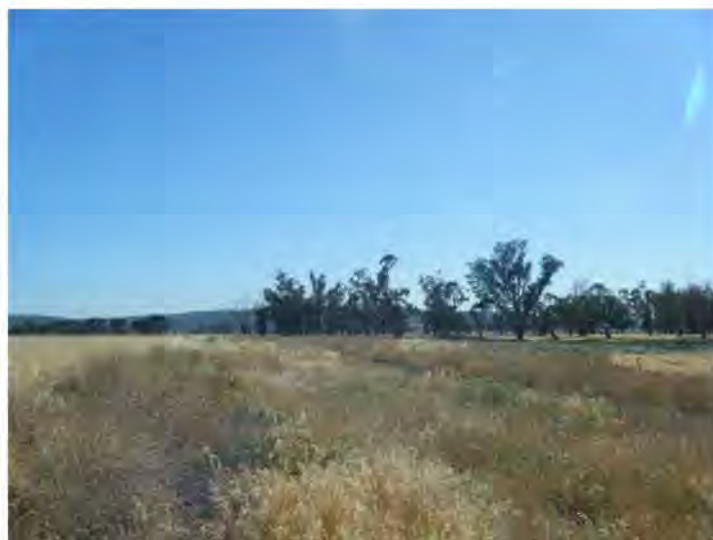


Plate 1 Survey Area Roma Boreholes and Pipeline Overview Facing North



Plate 2 Survey Area Roma Boreholes and Pipeline Overview Facing South



Plate 3 Survey Area Roma Boreholes and Pipeline Overview Facing East



Plate 4 Survey Area Roma Boreholes and Pipeline Overview Facing West



Plate 5 Example of ground disturbance due to Ploughing

Proposed Victoria Park Bore Hole

The proposed Victoria Park bore hole is located approximately 350m to the south east of Barbers Pinnacle (Figure 3).

Table 4 Proposed Victoria Park Bore Hole Survey Co ordinates

Easting	Northing
221917	6604957
221972	6605011
222040	6604973
222012	6604936

The survey area was heavily disturbed from previous farming activities. The ground was heavily cattle pugged.

No artefacts were located during the survey. One artefact (PL7/14) has been identified approximately 170m to the south west of the Subject Site.



Figure 3 Proposed Victoria Park Bore Hole Survey Area

Management Recommendations

It is recommended that Boggabri Coal undertake the following:

1. Avoid sites where possible.
2. Once the 75W application is approved amend the CHMP to include the revised project boundary.
3. Apply the CHMP to the management of the sites.
4. If the 75W application for this area is not approved, an AHIP will be required.

If you have any queries please don't hesitate to contact me on the numbers above.

Regards,
Insite Heritage Pty Ltd



Taryn Gooley
Archaeologist

Inside Heritage Pty Ltd
 Po Box 98
 Wangi Wangi New South Wales 2267
 Attention: Taryn Gookey
 Email: taryn@insideheritage.com.au

Date: 09 October 2014

Dear Sir or Madam:

AHIMS Web Service search for the following area at Datum: GDA, Zone: 56, Eastings: 217012 - 220792, Northings: 6604990 - 6607311 with a Buffer of 50 meters, conducted by Taryn Gookey on 09 October 2014.

The context area of your search is shown in the map below. Please note that the map does not accurately display the exact boundaries of the search as defined in the paragraph above. The map is to be used for general reference purposes only.



A search of the Office of the Environment and Heritage AHIMS Web Services (Aboriginal Heritage Information Management System) has shown that:

1	Aboriginal sites are recorded in or near the above location.
0	Aboriginal places have been declared in or near the above location.*

Figure 4 Roma Bore Holes and Pipeline AHIMS Search

State	Site Name	Address	Zone	Listing	Site Name	Control	Site Status	Structures	Site Type	Access
NSW	Wentworth	NSW	NSW	220792	6601161	Open Site	NSW	Archie	Open Site	Access

Report generated by AHIMS Web Services on 04/30/2014 for Tanya Conley for the following search criteria: CD: 6, Zone: 56, Listings: 220792, Site Name: 6601161 within a radius of 50 meters. Additional info: Free Database. Number of Aboriginal sites and Aboriginal objects found: 1

This report is provided as a free service to the public by the Office of Environment & Heritage. It is not intended to be used for legal or other purposes. For more information, please contact the Office of Environment & Heritage.

Figure 5 Roma Bore Holes and Pipeline Extensive AHIMS Search Results

Insite Heritage Pty Ltd
Po Box 93
Wangi Wangi New South Wales 2267
Attention: Taryn Gooley
Email: taryn@insiteheritage.com.au

Date: 09 October 2014

Dear Sir or Madam:

AHIMS Web Service search for the following area at Datum :GDA, Zone :56, Eastings : 221038 - 224583, Northings : 6604236 - 6607706 with a Buffer of 50 meters, conducted by Taryn Gooley on 09 October 2014.

The context area of your search is shown in the map below. Please note that the map does not accurately display the exact boundaries of the search as defined in the paragraph above. The map is to be used for general reference purposes only.



A search of the Office of the Environment and Heritage AHIMS Web Services (Aboriginal Heritage Information Management System) has shown that:

0	Aboriginal sites are recorded in or near the above location.
0	Aboriginal places have been declared in or near the above location.*

Figure 6 Victoria Park Bore Hole AHIMS Search

Attachment 1 – AHIMS search result.

Insite Heritage Pty Ltd
Po Box 98
Wangi Wangi New South Wales 2267
Attention: Elizabeth Wyatt
Email: lizwyatt@insiteheritage.com.au

Date: 18 February 2014

Dear Sir or Madam:

AHIMS Web Service search for the following area at Datum :GDA, Zone : 56, Eastings : 219688 - 220590, Northings : 6607202 - 6608040 with a Buffer of 50 meters, conducted by Elizabeth Wyatt on 18 February 2014.

The context area of your search is shown in the map below. Please note that the map does not accurately display the exact boundaries of the search as defined in the paragraph above. The map is to be used for general reference purposes only.



A search of the Office of the Environment and Heritage AHIMS Web Services (Aboriginal Heritage Information Management System) has shown that:

0	Aboriginal sites are recorded in or near the above location.
0	Aboriginal places have been declared in or near the above location.*

Insite Heritage Pty Ltd
Po Box 98
Wangi Wangi New South Wales 2267
Attention: Elizabeth Wyatt
Email: lizwyatt@insiteheritage.com.au

Date: 18 February 2014

Dear Sir or Madam:

AHIMS Web Service search for the following area at Datum :GDA, Zone : 56, Eastings : 220486 - 220673, Northings : 6607310 - 6608700 with a Buffer of 50 meters, conducted by Elizabeth Wyatt on 18 February 2014.

The context area of your search is shown in the map below. Please note that the map does not accurately display the exact boundaries of the search as defined in the paragraph above. The map is to be used for general reference purposes only.



A search of the Office of the Environment and Heritage AHIMS Web Services (Aboriginal Heritage Information Management System) has shown that:

0	Aboriginal sites are recorded in or near the above location.
0	Aboriginal places have been declared in or near the above location.*

Appendix B4 - Revised Due Diligence Inspection for Power line, Pipeline and Bore Hole sites – at Roma and Coobobindi.



INSITE HERITAGE
PTY LTD

PO Box 98
Wangi Wangi NSW 2267
admin@insiteheritage.com.au
P/F 0249755818
ABN 70 110 716 080

10th June 2015,

Revised Due Diligence Inspection for Power line, Pipeline and Bore Hole sites – at Roma and Coobooindi.

Boggabri Coal Idemitsu Australia Pty Ltd propose to build a pipeline to connect bores to an existing dam. The pipeline will be located on the surface, except where burial is required due to its location on the floodplain. The pipeline is 90mm & 160mm in diameter. The bores have a footprint of 5x5 metres. The pipeline is located outside the Boggabri Coal project boundary and therefore is not covered by the Boggabri Coal CHMP; however the proposed activity is subject to a 75W Application (Figures 1, 2 and 3). The application seeks to modify the project boundary and if approved the revised boundary will be incorporated in to the Cultural Heritage Management Plan (CHMP) and sites within the boundary managed accordingly.

As the proposed works are not included in those activities defined as a low impact activity for which there is a defence in the NPW Regulation (OEH 2010), a due diligence field survey was conducted of the entire revised route and bore locations with RAPs from the Boggabri Coal stakeholder list.

The due diligence assessment was conducted on Tuesday 9th June 2015 and included a site inspection by Insite Heritage Pty Ltd (archaeologist, Taryn Gooley) and Aboriginal stakeholder representatives (Gary Griffiths – Representing Bigundi Biame Traditional People, and Sam Cameron – representing T&G Cultural Consultants).

Generic Due Diligence Assessment – Based on Office of Environment & Heritage (OEH) Due Diligence Code of Practice for the Protection of Aboriginal Objects in New South Wales (2010).

Step 1. Will the activity disturb the ground surface or any culturally modified trees?

The construction of the bores will disturb the ground in an area of 5m x 5m. The pipeline will disturb the ground in sections that require burial due to its location on the floodplain or for crossing points. The remaining areas shall have the pipeline placed on the ground. The Power line will be above ground and ground disturbance will be limited to an area of approximately 2mx2m where a power pole will be placed to connect the power line to an existing power line.

There are no culturally modified trees within the proposed area of impact.

Step 2 a) Are there any relevant confirmed site records or other associated landscape features on AHIMS

A search of the Aboriginal Heritage Information Management System (AHIMS) was undertaken for the subject site in order to identify if there are any previously recorded Aboriginal archaeological sites within the project area (Attachment 1). One site appears on the register in the search, PL1/14 (20-4-0527) which was identified in the due diligence inspection of the proposed Bellevue bore and pipeline. Five sites (PL2/14, PL3/14, PL4/14, PL5/14 & PL8/14) were recently recorded during a due diligence inspection for the original alignment of the Roma Bore hole and pipeline. The sites with the exception of PL8/14, are located between 10m-500m to the north of the revised proposed bore hole, power line, and pipeline installation subject to this Due Diligence assessment. The proposed Roma pipeline will impact on site PL8/14.

Step 2 b) Are there any landscape features that are likely to indicate presence of Aboriginal objects.

Paleochannels that Mitchell believes may date to the Pleistocene are located within the properties "Cooboobindi" and "Roma".¹ In areas near these features there are small Aeolian dunes. The sandy soils of these features are associated with higher artefact frequency.

The proposed bore holes and pipeline are located near these potential focal features in the landscape; however the proposed works is located on very disturbed ground within these areas and is therefore unlikely to impact on any in-situ deposits.

Step 3. Can harm to Aboriginal object listed on AHIMS or identified by other sources of information and /or can the carrying out of the activity at the relevant landscape features be avoided.

The bores and infrastructure are constrained by the boundary of land excised from the biodiversity offset land and / or constraints on access to private land. If an object cannot be avoided the salvage methodology detailed in the CHMP will be applied.

Step 4. Does a desktop assessment and visual inspection confirm that there are Aboriginal objects?

Proposed Roma Bore Hole and Pipeline

Previous Due Diligence Inspections

Two due diligence inspections have previously been conducted for the proposed Roma borehole and pipeline. The due diligence assessment of the original Roma bore hole and pipeline alignment located a site to the north east of the subject site (PL8/14) it consisted of three artefacts located on a dirt access road (Warner's Road).

The area was revisited in October 2014 in order to conduct a site inspection of the revised Roma borehole and pipeline alignment. The site inspection identified a disperse scatter of artefacts on the access road (Warner's Road) which extended west into the revised Roma 1 & 2 borehole and pipeline impact area. This disperse scatter of artefacts is a continuation of site PL8/14 (Figure 4).

An area with the potential for subsurface archaeological deposit (PAD) was also identified to the north east of the proposed impact area (Refer to Figure 4).²

Site Inspection for Revision 3 of the Proposed Roma Borehole and Pipeline

¹ Mitchell, P. 2007 in ARAS Boggabri Coal Salvage Report (p26)

² For full details of the results of the previous due diligence assessments for the Roma Borehole and pipeline areas please refer to Insite Heritage Pty Ltd (2014) "Due Diligence Inspection BCP Pipeline and Bore Sites – Victoria Park and Cooboobindi" ; and Insite Heritage Pty Ltd (2014) "Due Diligence Inspection BCPE Pipeline and Bore Hole Sites – Victoria Park and Roma Bores 1 & 2"

Revision 3 of the proposed Roma pipeline is located immediately to the west of Warner's Road and follows the general alignment of Warner's Road within a ploughed paddock. The pipeline then follows an existing track and fence line toward the west terminating at the Roma bore hole (Figure 5).

Where the proposed pipeline follows Warner's Road; it is located between 5m and 25m to the west of a remnant river terrace which may date to the Pleistocene period.³ The western most point of the pipeline, where it connects to the bore hole is located approximately 260m to the west of Warner's Road and the remnant river terrace.

The subject site has been heavily disturbed by farming activities such as the construction of contour banks and access tracks, as well as ploughing. Deep cracks and lines from ploughing were noted throughout the subject site.

Large (~20-30cm) IMT stones and water worn pebbles were noted during the site inspection and were likely churned up during the ploughing process. Pieces of clay were also visible throughout the ploughed paddocks. Imported stone which had been brought in to stabilize the ground around the bore hole site has been shattered by the recent ploughing resulting in large amounts of stone fragments resembling artefacts.

Three artefacts were identified along the access track linking Warner's Road to the proposed bore hole. The artefacts have been recorded and lodged with AHIMS as sites PL1/15, PL2/15, and PL3/15. Refer to Table 1 for artefact details and Figure 5 for artefact locations.

Surface visibility within the area of proposed impact ranged from between 60-80% while the level of background gravels and disturbance from ploughing resulted in archaeological visibility of ~20-40%.

The level of disturbance within this area makes the exact provenance of the three artefacts identified along the access track difficult to determine. It is possible the artefacts have been transported from PL8/15 during farming activities.

Refer to Plates 1- for images taken during the due diligence inspection of the proposed impact area

³ Mitchell, P. 2007 in ARAS Boggabri Coal Salvage Report (p26)

Proposed Cooboobindi Power Line

Previous Due Diligence Inspections

Two previous due diligence inspections have been conducted within close proximity to the proposed Cooboobindi power line. One artefact scatter (PL9/14) was identified during the previous due diligence assessments on the access road to the bore hole from Therribri Road.⁴ The proposed impact area surveyed during the original due diligence inspection was found to be highly disturbed from farming activities such as the construction of contour banks, access roads, and ploughing.

Site Inspection for Cooboobindi Power Line

The proposed Cooboobindi power line will run from an existing power pole located approximately 300m to the south west of the Cooboobindi bore hole. The power line will provide power to both the Cooboobindi bore hole and the Roma bore hole. For the alignment of the power line refer to Figure 6.

As with the Roma pipeline and bore hole, the proposed Cooboobindi power line impact area has been heavily disturbed by farming activities. Disturbances include the construction of contour banks and access tracks; the construction of a large drainage system, and ploughing. Deep cracks and lines from ploughing were noted throughout the subject site. Large stones and pieces of clay were also noted throughout the impact area. The entire paddock is affected by water drainage issues, with large drainage patterns noted during the survey.

Two artefacts were identified during the survey (Refer to Table 1 and Figure 6). The artefacts were located within a recently ploughed paddock very close to a highly water washed area which drains into a highly modified creek. The artefacts have been recorded and lodged with AHIMS as site PL4/15.

Surface visibility within the survey area was found to be good with small patches of low visibility in parts (~50-90%). Archaeological visibility however, was moderate (~30-50%) due to the level of disturbance from recent ploughing.

⁴ For full details of the results of the previous due diligence assessment within proximity to the Coobobindi power line please refer to Insite Heritage Pty Ltd (2014) "Due Diligence Inspection BCP Pipeline and Bore Sites – Victoria Park and Cooboobindi"

Table 1 Archaeological Sites Identified and Artefact details

Site Name	Location	Coordinates	Inside / Outside existing project boundary	Content
PL1/15	Roma Pipeline/Access	218849 E, 6605767 N	Outside	IF – Orange Chalcedony Flake, 30x20x15mm. Focal Platform, Feather Termination
PL2/15	Roma Pipeline/Access	218744 E, 6605718 N	Outside	IF – Red IMT Retouched flake 30x30x15mm. Broad Platform Retouch on lateral and distal margins
PL3/15	Roma Power line/Access	218368 E, 6605828 N	Outside	IF – Grey Chert retouched Flake. 20x15x7mm. Retouch distal end
PL4/15	Cooboobindi Power line	217665 E, 6606196 N	Outside	Small scatter of 2 artefacts – Orange/brown retouched flake. 60x45x30mm. Focal platform, steep retouch right lateral margin. Grey IMT flake. 30x30x10mm. Focal Platform, Hinge Termination

Management Recommendations

It is recommended that Boggabri Coal undertake the following:

1. Avoid sites where possible.
2. Once the 75W application is approved amend the CHMP to include the revised project boundary.
3. Apply the CHMP to the management of the sites.
4. If the 75W application for this area is not approved, an AHIP will be required.

If you have any queries please don't hesitate to contact me on the numbers above.

Regards,
Insite Heritage Pty Ltd



Taryn Gooley
Archaeologist

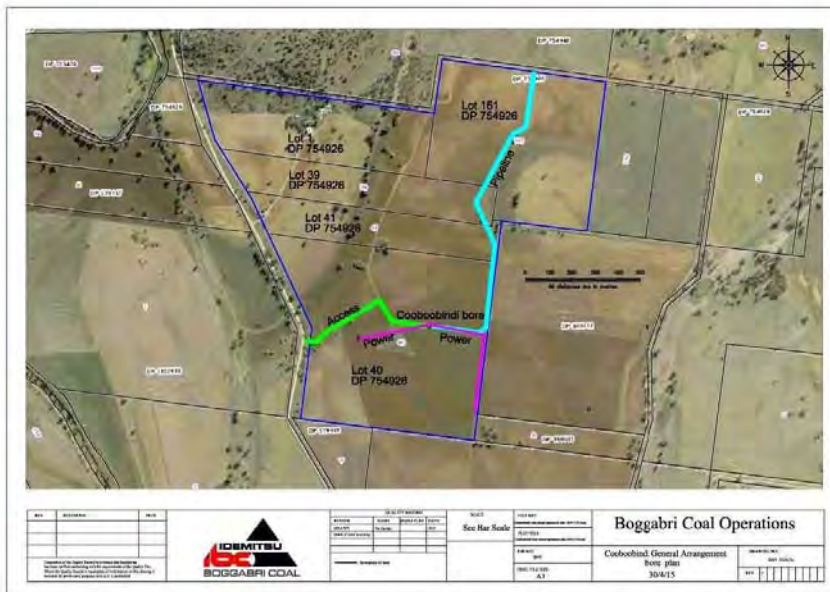


Figure 1 Proposed Coobooindi Power line (marked in pink), Bore hole, Pipeline (marked in light blue), and Access (marked in green)

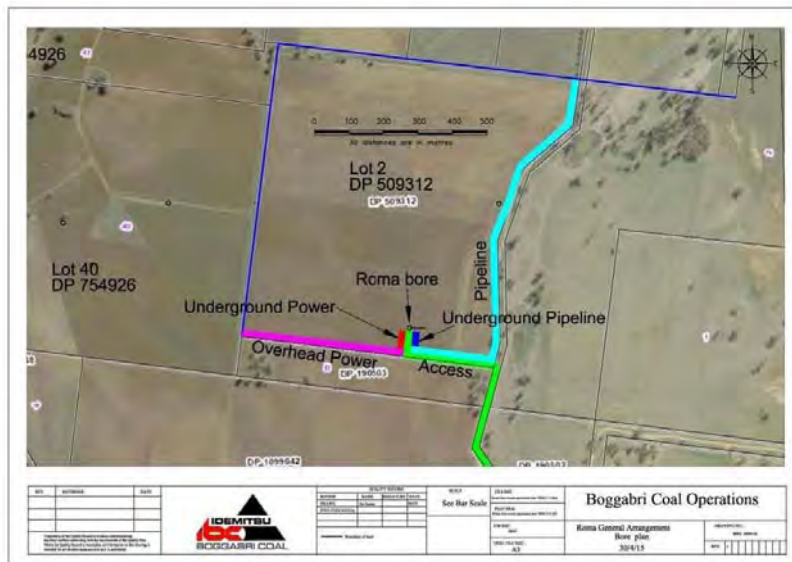


Figure 2 Proposed Roma Bore Hole, Pipeline, Access, and Power line.



Figure 3 Survey Areas for the Due Diligence Inspection of the Roma Borehole and Pipeline, and the Cooboobindi Power Line conducted on 9/06/2015

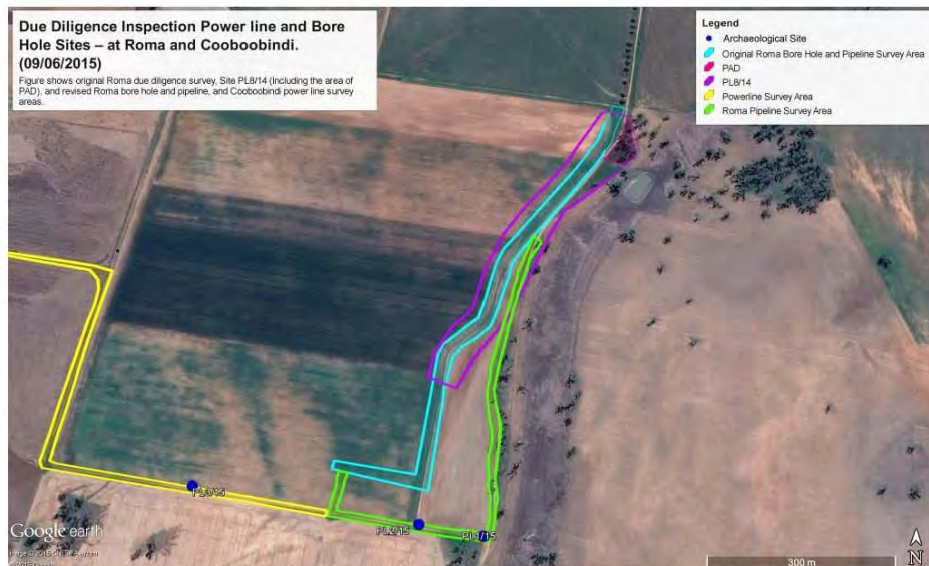


Figure 4 Area Surveyed for Roma Bore Hole Revision 3 (marked in green) on 9/06/2015. Includes PLB/14 Site Boundary and Area of Potential Archaeological Deposit (PAD) and previous due diligence survey area.



Figure 5 Roma Bore Hole and Pipeline Survey Area (09/06/2015) – Revision 3



Figure 6 Cooboobindi Power Line Survey Area (09/06/2015) – Revision 2



Plate 1 Roma Access Track Facing West



Plate 2 Roma Access Track Facing East



Plate 3 Ground Disturbance from Ploughing at Roma



Plate 4 Roma Remnant River Terrace Facing NE showing Stones Churned Up by Ploughing



Plate 5 Roma Bore Hole Facing North



Plate 6 Roma Pipeline Location Facing NW



Plate 7 Roma Bore Hole and Pipeline facing South showing Warner's Road



Plate 8 Retouched Artefact Identified at PL4/15 (within Coobobindi Power Line Impact Area)



Plate 9 Evidence of disturbance at Cooboobindi within the proposed area of Impact



Plate 10 Cooboobindi facing north along approximate pipeline route



Plate 11 Cooboobindi facing SW along approximate power line route



Plate 12 Cooboobindi facing SW along approximate power line route showing disturbance from water runoff, ploughing and construction of drainage areas.

Attachment 1 – AHIMS Search



Insite Heritage Pty Ltd
Po Box 98
WangiWangi New South Wales 2267
Attention: Taryn Gooley
Email: taryn@insiteheritage.com.au

Date: 09 October 2014

Dear Sir or Madam:

AHIMS Web Service search for the following area at Datum :GDA, Zone :56, Eastings : 217012 - 220792, Northings : 6604990 - 6607311 with a Buffer of 50 meters, conducted by Taryn Gooley on 09 October 2014.

The context area of your search is shown in the map below. Please note that the map does not accurately display the exact boundaries of the search as defined in the paragraph above. The map is to be used for general reference purposes only.



A search of the Office of the Environment and Heritage AHIMS Web Services (Aboriginal Heritage Information Management System) has shown that:

1	Aboriginal sites are recorded in or near the above location.
0	Aboriginal places have been declared in or near the above location.*

Figure 7 Roma Bore Hole and Pipeline, Coobooindi Power Line AHIMS Search

Item ID	Site Name	Datum	Zone	Eastings	Northings	Contact	Site Status	Site Features	Site Dates	Reports
19-0-0217	19-1-114 East	GDA	56	220070	6607345	open.dia	Valid	Appoint		
	East	Scenic		Mrs Angela Broad				Private		

Report generated by AHIMS Web Services on 09/10/2014 for Tanya Gordon for the following area of Datum: GDA, Zone: 56 Eastings: 217012 - 220792, Northings: 6604950 - 6607311 within
Buffer of 50 metres. Additional Info: Due Diligence, Number of Aboriginal sites and Aboriginal objects found: 1
This information is not guaranteed to be free from error. Information is the property of the Office of Environment & Heritage (OEH) and its employees and should not be used for any other purpose without the written consent of OEH.

Figure 8 Roma Bore Holes and Pipeline Extensive AHIMS Search Results

Appendix B5 - Bellevue Due Diligence Report



INSITE HERITAGE
PTY LTD

PO Box 98
Wangi Wangi NSW 2267
admin@insiteheritage.com.au
P/F 0249755818
ABN 70 110 716 080
19th February 2014

Due Diligence Inspection BCP Pipeline and Bore sites

Re: Due Diligence Aboriginal Archaeological Assessment of the Proposed Pipeline and Borehole Sites

Boggabri Coal Idemitsu Australia Pty Ltd propose to build a pipeline to connect bores to an existing dam. The pipeline will be on the surface and is 90mm & 160mm in diameter. The bores have a footprint of 5x5 metres. The pipeline is located outside the Boggabri Coal project boundary therefore is not covered by the Boggabri Coal CHMP.

As the proposed works are not included in those activities defined as a low impact activity for which there is a defence in the NPW Regulation (OEH 2010), a due diligence field survey was conducted of the entire route and bore locations with RAPs from the Boggabri Coal stakeholder list.

The due diligence assessment included a site inspection by Insite Heritage Pty Ltd (archaeologists, Angela Besant and Rob Tickle) and Aboriginal stakeholder representatives (Cyril Sampson, George Sampson, Wayne Griffiths and Sonny Fitzroy).

Generic Due Diligence Assessment – Based on Office of Environment & Heritage (OEH) Due Diligence Code of Practice for the Protection of Aboriginal Objects in New South Wales (2010).

Step 1. Will the activity disturb the ground surface or any culturally modified trees?

The construction of the bores will disturb the ground in an area of 5m x 5m. The pipeline will be placed on the ground and crossings constructed of imported material.

Step 2 a) Are there any relevant confirmed site records or other associated landscape feature on AHIMS

A search of the Aboriginal Heritage Information Management System (AHIMS) was undertaken for the subject site in order to identify if there are any previously recorded Aboriginal archaeological sites within the project area. No sites have been recorded in the area (see attachments 1 & 2).

Step 2 b) Are there any landscape features that are likely to indicate presence of Aboriginal objects.

There are no landscape features, however historically there may have been gilgais in the area that have been obscured by ploughing and grazing. The pipeline is located on a plain.

Step 3. Can harm to Aboriginal object listed on AHIMS or identified by other sources of information and /or can the carrying out of the activity at the relevant landscape features be avoided.

The pipeline route is constrained by the boundary of land excised from the biodiversity offset land. As the pipeline is located on the surface and disturbance will be minimal there is the potential to avoid impact on specific objects.

Step 4. Does a desktop assessment and visual inspection confirm that there are Aboriginal objects?

The site inspection located an open scatter in the route of the pipeline. The site extends beyond the corridor excised for the pipeline from the biodiversity offset lands (Figure 1).

The site comprises 17 flakes, 7 broken flakes, 4 flaked pieces, 6 cores and a grinding pad.

Management Recommendations

It is recommended that Boggabri Coal undertake the following:

1. Investigate the potential for the pipeline to run through the site without impacting on any Aboriginal objects,
2. Apply for an AHIP to move the objects from the pipeline route and place them in the biodiversity offset area. This will require a time frame of 3-4 months, a renewed consultation process and an Aboriginal Cultural Heritage Assessment Report.
3. Modify the boundary of the excised area to allow the pipeline to go around the site.
4. Place supports for the pipeline between artefacts and suspend the pipe a few centimetres above the site.

If you have any queries please don't hesitate to contact me on the numbers above.

Regards,

Insite Heritage Pty Ltd

Angela Besant
Archaeologist

Insite Heritage Pty Ltd
Po Box 98
Wangi Wangi New South Wales 2267
Attention: Elizabeth Wyatt
Email: lizwyatt@insiteheritage.com.au

Date: 18 February 2014

Dear Sir or Madam:

AHIMS Web Service search for the following area at Datum :GDA, Zone :56, Eastings : 219688 - 220590, Northings : 6607202 - 6608040 with a Buffer of 50 meters, conducted by Elizabeth Wyatt on 18 February 2014.

The context area of your search is shown in the map below. Please note that the map does not accurately display the exact boundaries of the search as defined in the paragraph above. The map is to be used for general reference purposes only.



A search of the Office of the Environment and Heritage AHIMS Web Services (Aboriginal Heritage Information Management System) has shown that:

0	Aboriginal sites are recorded in or near the above location.
0	Aboriginal places have been declared in or near the above location.*

Insite Heritage Pty Ltd
Po Box 98
Wangi Wangi New South Wales 2267
Attention: Elizabeth Wyatt
Email: lizwyatt@insiteheritage.com.au

Date: 18 February 2014

Dear Sir or Madam:

AHIMS Web Service search for the following area at Datum :GDA, Zone : 56, Eastings : 220486 - 220673, Northings : 6607310 - 6608700 with a Buffer of 50 meters, conducted by Elizabeth Wyatt on 18 February 2014.

The context area of your search is shown in the map below. Please note that the map does not accurately display the exact boundaries of the search as defined in the paragraph above. The map is to be used for general reference purposes only.



A search of the Office of the Environment and Heritage AHIMS Web Services (Aboriginal Heritage Information Management System) has shown that:

0	Aboriginal sites are recorded in or near the above location.
0	Aboriginal places have been declared in or near the above location.*

Appendix C – Registered Aboriginal Stakeholder Comments

Appendix D – Consultation Log

Table 2 Consultation Log 75W

Date	Action	RAP	Organisation	Response
10/10/2014	Invitation to stakeholders to attend October ASCF on the 16.10.14 at PCYC express post mailed, emailed and sms to all parties with mobiles	George Sampson	Cacatua Cultural Consultants	
		Reg Talbott		
		Wayne Griffiths	Bigundi Biame Traditional People	
		Aaron Talbott	Gomilaroi Cultural Consultants	
		Jane Bender	Gunida Gunyah Aboriginal Corporation	
		Gloria Foley		
		Lloyd Matthews	BB Consultants	
		Deslee Matthews	Deslee Talbott Consultant	
		Gwen Griffen	Min Min Aboriginal Corporation	
		Leonard Talbott	Ngurrambaa Gunidjaa Traditional Owners	
		Toni Comber	Red Chief LALC	
		Troy Silver	TNL Site Trackers	
		Steve Talbott	Gomeroi Namoi Traditional Owners	
		Michael Long	White Cockatoo	
		Ronald Long		
Tony & Greg Griffiths	T & G			

			Cultural Consultants	
		Cindy Foley		
		Shannon Draper		
		David Horton	Gomery Cultural Consultants	
		Brian Draper		
		Scott Talbott		
		Craig Trindall	Craig Trindall Consulting	
		Les Field	LJ Culture	
		James Foley		
		Veronica Talbott (Dolly)	Wunga-Li Traditional Owners	
		Cyril Sampson		
		Sonny Fitzroy		
		Nathan Slater (NO CURRENT CONTACT DETAILS)		No current address
		Michael Trindall		
		Mr Jason Wilson (NO CURRENT CONTACT DETAILS)		
	Patricia Hands	Elli Lewis Cultural Heritage Consultants		
14/10/2014	Called RAP's to see if they could attend ASCF on the 16/10/14		Cacatua Cultural Consultants	No
		George Sampson		Yes
		Reg Talbott		Yes
		Wayne Griffiths	Bigundi Biame Traditional People	Yes
		Aaron Talbott	Gomilaroi Cultural Consultants	Phone out of service
		Jane Bender	Gunida Gunyah Aboriginal Corporation	No
		Gloria Foley		Yes
		Lloyd Matthews	BB Consultants	No answer
		Deslee Matthews	Deslee Talbott Consultant	No answer, left message

	Gwen Griffen	Min Min Aboriginal Corporation	Will try to make it, but works most of the morning.
	Leonard Talbott	Ngurrambaa Gunidjaa Traditional Owners	No response
	Toni Comber	Red Chief LALC	Dave Horton will be attending
	Troy Silver	TNL Site Trackers	No answer
	Steve Talbott	Gomeroi Namoi Traditional Owners	No
	Michael Long	White Cockatoo	No answer
	Ronald Long		No answer
	Tony & Greg Griffiths	T & G Cultural Consultants	No answer, left message
	Cindy Foley		Will be sending a REP. Should be a paid meeting because it is discussing Methodology. Will contact Chase Dingle to discuss.
	Shannon Draper		No answer, left message
	David Horton	Gomery Cultural Consultants	Yes
	Brian Draper		No answer, left message
	Scott Talbott		Yes
	Craig Trindall	Craig Trindall Consulting	No
	Les Field	LJ Culture	No
	James Foley		No answer
	Veronica Talbott (Dolly)	Wunga-Li Traditional Owners	No- Notice of meeting was too short. Unacceptable, need to give people time to

				get off work/ travel. Wants more info on 75w mod. Will call Angela Besant to discuss.
		Cyril Sampson		No answer
		Sonny Fitzroy		Yes
		Nathan Slater (NO CURRENT CONTACT DETAILS)		Phone out of service
		Michael Trindall		No
		Mr Jason Wilson (NO CURRENT CONTACT DETAILS)		Phone out of service
		Patricia Hands	Elli Lewis Cultural Heritage Consultants	No contact details
16/10/2014	Dolly Talbot Called Angela Besant RE: Short notice of ASCF 16/10/2014	Veronica Talbott		Angela apologised for the short notice, it is an extraordinary meeting. Discussed the 75W application, Will send her information and minutes
16/10/2014	Extraordinary ASCF held Gunnedah PCYC	Attendance sheet attached below		
23/10/2014	Mail out further information RE: 75W and request for information RE: any cultural values. Minutes from the meeting on the 23rd October, 2014 also mailed out.	George Sampson	Cacatua Cultural Consultants	
		Reg Talbott		
		Wayne Griffiths	Bigundi Biame Traditional People	
		Aaron Talbott	Gomilaroi Cultural Consultants	
		Jane Bender	Gunida Gunyah Aboriginal Corporation	
		Gloria Foley		

Invitation to the next ASCF 18th November 2014 and agenda also mailed.	Lloyd Matthews	BB Consultants	
	Deslee Matthews	Deslee Talbott Consultant	
	Gwen Griffen	Min Min Aboriginal Corporation	
	Leonard Talbott (Email Only)	Ngurrambaa Gunidjaa Traditional Owners	
	Toni Comber	Red Chief LALC	
	Troy Silver	TNL Site Trackers	
	Steve Talbott	Gomeroi Namoi Traditional Owners	
	Michael Long	White Cockatoo	
	Ronald Long		
	Tony & Greg Griffiths	T & G Cultural Consultants	
	Cindy Foley		
	Shannon Draper		
	David Horton	Gomery Cultural Consultants	
	Brian Draper		
	Scott Talbott		
	Craig Trindall	Craig Trindall Consulting	
	Les Field	LJ Culture	
	James Foley		
	Veronica Talbott (Dolly) (Email Only)	Wunga-Li Traditional Owners	
	Cyril Sampson		
	Sonny Fitzroy		
	Nathan Slater (NO CURRENT CONTACT DETAILS)		
	Michael Trindall		
	Mr Jason Wilson (NO CURRENT CONTACT DETAILS)		
Patricia Hands	Elli Lewis Cultural		

			Heritage Consultants	
17/11/2014	Meeting with Gomerai Traditional Custodians held at RCLALC	Gomerai Traditional Custodians		
18/11/2014	BCPL ASCF held at RCLALC	Attendance sheet attached below		
19/11/2014	Letter was sent to those RAPs who had not attended a meeting or made comment on the previous 75W Mod information requesting a response by the 28th November, 2014 and offering any further information required. emailed to those RAPs with emails and express posted to those RAPs who do not have emails .	George Sampson	Cacatua Cultural Consultants	
		Aaron Talbott	Gomilaroi Cultural Consultants	
		Jane Bender (Gunida Gunyah Aboriginal Corporation)	Gunida Gunyah Aboriginal Corporation	
		Gloria Foley		
		Gwen Griffen (Min Min)	Min Min Aboriginal Corporation	
		Leonard Talbott	Ngurrambaa Gunidjaa Traditional Owners	
		Troy Silver	TNL Site Trackers	
		Steve Talbott	Gomerai Namoi Traditional Owners	
		Michael Long	White Cockatoo	
		Ronald Long		
		Tony & Greg Griffiths	T & G Cultural Consultants	
		Cindy Foley		
		Shannon Draper		
		Brian Draper		
		Scott Talbott		
		Craig Trindall	Craig Trindall Consulting	
Les Field	LJ Culture			
James Foley				
Veronica Talbott (Dolly)	Wunga-Li Traditional			

			Owners	
		Sonny Fitzroy		
		Nathan Slater (NO CURRENT CONTACT DETAILS)		
		Michael Trindall		
		Mr Jason Wilson (NO CURRENT CONTACT DETAILS)		
		Patricia Hands	Elli Lewis Cultural Heritage Consultants	
	The following RAP's were not sent the above listed letter as they attended the Meetings and were advised of the extension date and offered any further information they required.	Reg Talbott		
		Wayne Griffiths	Bigundi Biame Traditional People	
		Lloyd Matthews	BB Consultants	
		Deslee Matthews	Deslee Talbott Consultant	
		Toni Comber	Red Chief LALC	
		David Horton	Gomery Cultural Consultants	
		Cyril Sampson		
			George Sampson	Cacatua Cultural Consultants
13/03/2015	Invitation to stakeholders to attend April ASCF on the 15.04.2015 at PCYC	Reg Talbott		
		Wayne Griffiths	Bigundi Biame Traditional People	
		Aaron Talbott	Gomilaroi Cultural Consultants	
		Jane Bender	Gunida Gunyah Aboriginal Corporation	
		Gloria Foley		
		Lloyd Matthews	BB Consultants	
		Deslee Matthews	Deslee	

			Talbott Consultant	
		Gwen Griffen	Min Min Aboriginal Corporation	
		Leonard Talbott	Ngurrambaa Gunidjaa Traditional Owners	
		Toni Comber	Red Chief LALC	
		Troy Silver	TNL Site Trackers	
		Steve Talbott	Gomeroi Namoi Traditional Owners	
		Michael Long	White Cockatoo	
		Ronald Long		
		Tony & Greg Griffiths	T & G Cultural Consultants	
		Cindy Foley		
		Shannon Draper		
		David Horton	Gomery Cultural Consultants	
		Brian Draper		
		Scott Talbott		
		Craig Trindall	Craig Trindall Consulting	
		Les Field	LJ Culture	
		James Foley		
		Veronica Talbott (Dolly)	Wunga-Li Traditional Owners	
		Cyril Sampson		
		Sonny Fitzroy		
		Nathan Slater (NO CURRENT CONTACT DETAILS)		No current address
		Michael Trindall		
		Mr Jason Wilson (NO CURRENT CONTACT DETAILS)		
		Patricia Hands	Elli Lewis Cultural Heritage Consultants	
15/04/2015	ASCF Meeting Held	Attended by Michael Long		

	at the Gunnedah PCYC	Aaron Talbott George Sampson Sonny Fitzroy Samuel Cameron Lloyd Matthews James Thomas Greg Griffiths Natasha Talbott Shaun Davis Gloria Foley Brian Draper Leeann Foley Marjorie Talbott Cyril Sampson Cindy Foley Tyan Silver		
15/06/2015	Draft Mod 5 report sent to RAPS closing date for comments 10 th July 2015	'cacatua4service@tpg.com.au'; tagomilaroi@hotmail.com; tammy@gunidagunyah.com.au; minminaboriginalcorporation@yahoo.com.au; ceo@redchiefalc.com.au; steve talbott (talbo.minda@hotmail.com); michael long (whitecockatoo1@hotmail.com); Brian Draper (briandraper0013@gmail.com); scott.talbott80@hotmail.com; Craig Trindall (trindallconsulting@gmail.com); Dolly Talbott (nanagoanna@yahoo.com.au); jacquieshort@live.com; kyle.trindall@hotmail.com ljfield@hotmail.com; skitzoozy@hotmail.com 'wayneG@winanga-Li.org.au' By mail to Lloyd Matthews, Dick Talbott, Cyril Sampson, Gloria, James and Cindy Foley		
10/07/2015	Close for comments – no comments received.			

Appendix E - Letters to RAP's & Information Supplied to Stakeholders

Correspondence 10/10/2014

Invitation to Extraordinary ASCF Meeting on 16/10/2014 (Mailed/mailed 10/10/2014)



**BOGGABRI COAL
PTY LIMITED**

ABN 77 122 087 398

A Member of the
Idemitsu Australia
Resources Group

Boggabri Mine
386 Leard Forest Rd
Boggabri NSW 2382
Australia

PO Box 12
Boggabri NSW 2382
Australia

Telephone:
+61-2-6743 4775

Facsimile:
+61-2-6743 4496

Ref: 05-067-564

9 October 2014

Dear Stakeholder,

RE: ASCF Meeting Thursday 16th October 2014

Boggabri Coal Pty Limited would like to invite Registered Aboriginal Parties (RAPs) to attend a Boggabri Coal Project Aboriginal Stakeholder Consultative Forum (ASCF) meeting to discuss future Project developments, including a proposed Modification to Consent 09_0182 for the Boggabri Coal Project. Details of the meeting are below:

Date: Thursday 16th October 2014
Time: 10:00am – 12:00pm
Location: Gunnedah PCYC

Attached is a list of Modification items to be discussed at the meeting.

We would particularly like all RAPs to be in attendance to discuss details of upcoming field work.

The finalisation of the methodology for salvage works will also be an agenda item.

We look forward to seeing you there. If you have any questions, please contact Chase Dingle on 02 6749 4775 or 0467963379.

Yours sincerely,

**CHASE DINGLE
BOGGABRI COAL**

ATTN #1: LIST OF MODIFICATION DISCUSSION ITEMS

Registered Office:
Level 28 AMP Place
10 Eagle Street
GPO Box 1127
Brisbane QLD 4000
Australia

Telephone:
+61-7-3222 5600

Facsimile:
+61-7-3003 1900

ATTACHMENT: TOPICS FOR CONSULTATION

- PROJECT BOUNDARY REALIGNMENT TO ACCOUNT FOR BCT STOCKPILE + VEHICLE LOOP + LANDSCAPED STOCKPILE + CONTOUR DRAINS
- PROJECT BOUNDARY REALIGNMENT TO ACCOUNT FOR 11KV POWER LINE
- 11KV DAISEYMEDE BORE AND ACCESS TRACKS
- ROMA BOREFIELD, POWER LINE & PIPELINE
- BELLEVIEW BOREFIELD, POWER LINE & PIPELINE
- ADDITIONAL PROPOSED BOREFIELD & PIPELINES & ACCESS (VICTORIA PARK, HEATHCLIFFE, COOBOBINDI, ETC.)
- PROJECT BOUNDARY REALIGNMENT TO ACCOUNT FOR 11KV + 132KV + SERVICE TRACK + PADS
- PROJECT BOUNDARY REALIGNMENT TO ACCOUNT FOR UNDERGROUND POWER LINE (EAST OF BIFURCATION)
- PROJECT BOUNDARY REALIGNMENT TO ACCOUNT FOR ALL ADJACENT BORROW PITS
- ROM ROAD DESIGN + DRAINAGE/ CLEAN & DIRTY WATER SEPARATION
- REJECTS ROAD DESIGN + DRAINAGE/ CLEAN & DIRTY WATER SEPARATION
- SD3 – ADDITIONAL CAPACITY
- SD12 – ADDITIONAL 100ML CAPACITY
- INDICATIVE DOZER MAINTENANCE AREA
- EQUIPMENT RECYCLING YARD
- DRAINAGE FOR THE TARRAWONGA DISCHARGE POINT
- INCREASED HAULAGE ACROSS THERRIBRI ROAD (ABOVE 5.5MTPA)
- FENCE THE DISTURBANCE BOUNDARY
- INCREASE ROM FOOTPRINT
- ADDITIONAL FUEL STORAGE

Copy of Email Invitation to ASCF Meeting 16/10/2014

From: Liz Wyatt
To: "cacatua4service@tpq.com.au"; "qomilaroi@hotmail.com"; "tammym@qunidaqunyah.com.au"; "mdeslee@hotmail.com"; "m-deslev@hotmail.com"; "miniminaboriginalcorporation@yahoo.com.au"; "skitzoozy@hotmail.com"; "ceo@redchieftlc.com.au"; "talbominda@hotmail.com"; "whitecockatoo1@hotmail.com"; "ronaldlong3270@yahoo.com.au"; "briandaper0013@gmail.com"; "scott.talbot80@hotmail.com"; "triquenorth@yahoo.com.au"; "lfield@hotmail.com"; "nanapanna@yahoo.com.au"; "jacqueshort@live.com"; "kyle.trindall@hotmail.com"; "esther.tiqhe@bigpond.com.au"; "Petewatto24@gmail.com"
Cc: "angela"; "Chase Dingle"
Date: Friday, 10 October 2014 12:02:00 PM
Attachments: Notification to R&Ps 0933_001.pdf
image001.png

Dear All

Boggabri Coal would like to invite you to the next ASCF to be held on Thursday 16th October 2014 at Gunnedah PCYC from 10am to 12pm. Please see attached letter.

This meeting has been called to cover a range of important topics so your attendance would be greatly appreciated.

Please contact Chase Dingle if you have any queries.

Regards,

Elizabeth Wyatt | Archaeologist



INSITE HERITAGE
PTY LTD

PO Box 98 Wangi Wangi NSW 2267
P 0249755818

Registered Post Record for ASCF Invitation 16/1/2014

Stakeholder	Company	Registered Post Record 16/10/2014 ASCF invite (Mailed 10/10/14)
George Sampson	Cacatua Cultural Consultants	60412898910095
Reg Talbott	Reg Talbott	6041289019099
Wayne Griffiths	Bigundi Biame Traditional People	60412898908092
Aaron Talbott	Gomilaroi Cultural Consultants	60412898907095
Jane Bender	Gunida Gunyah Aboriginal Corporation	60412898906098
Gloria Foley	Gunnedah Aboriginal Elders Justice Group	
Tania Matthews	BB Consultants	60412898905091
Deslee Matthews	Deslee Talbott Consultant	60412907990094
Gwen Griffen	Min Min Aboriginal Corporation	60412907989098
Leonard Talbott (rep Natasha)	Ngurramba Gunidjaa Traditional Owners	Email Only
Toni Comber	Red Chief LALC	60412907988091
Troy Silver	TNL Site Trackers	60412907987094
Steve Talbott	Gomeroi Namoi Traditional Owners	60412907986097
Michael Long	White Cockatoo	60412907985090
Ronald Long	Ronald Long	60412907984093
Tony Griffiths	T & G Cultural Consultants	60412907983096
Cindy Foley	Cindy Foley	60412907982099
Shannon Draper		60412907981092
David Horton	Gomery Cultural Consultants	60412907981091
Brian Draper	Brian Draper	60412898973090
Scott Talbott	Scott Talbott	60412898972093
Craig Trindall	Gomeroi Narrabri Aboriginal Corporation	60412898971096
Les Field		60412898969099
James Foley	James Foley	60412898969093
Veronica Talbott (Dolly)	Wunga-Li Traditional Owners	Email Only
Cyril Sampson	Namoi CMA	60412898968096
Sonny Fitzroy	Sonny Fitzroy	60412898967099
Nathan Slater	Nathan Slater	
Michael Trindall	Michael Trindall	60412898966092
Mr Jason Wilson		60412898965095
Patricia Hands	Elli Lewis Cultural Heritage Consultants	60412898964098

Correspondence 23/10/2014

BCPL Request for Comment on Proposed 75W Modification (Mailed/mailed 23/10/2014)



BOGGABRI COAL
PTY LIMITED

ABN 77 122 087 398

A Member of the
Idemitsu Australia
Resources Group

Boggabri Mine
386 Leard Forest Rd
Boggabri NSW 2382
Australia

PO Box 12
Boggabri NSW 2382
Australia

Telephone:
+61-2-6743 4775

Facsimile:
+61-2-6743 4496

Ref: 05-067-568

22 October 2014

Dear Stakeholder,

RE: -Cultural Heritage Management Plan Methodology and s75W Modification

Boggabri Coal held an extraordinary Aboriginal Stakeholder Consultation Forum (ASCF) meeting on Thursday 16th October 2014. The regular ASCF will be held in mid-November as per the usual timing.

The purpose of the meeting was to discuss a proposed application under Section 75W of the Environmental Planning and Assessment Act 1979 to modify the existing Project Approval (PA 09_0182). The proposal is to modify the project boundary to include infrastructure that is existing or proposed (powerlines, bores and pipelines and locations of existing borrow pits etc). The proposed Section 75W modification application includes activities within the existing project boundary that are additional to those that have received approval. All infrastructure and activities subject to the proposed Section 75W modification application were listed on the meeting invitation sent out on the 10th October 2014.

The proposal to amend the project boundary will require that the project boundary to which the CHMP applies will also need to be updated.

Boggabri Coal seek comment on the following to assist with the proposed Section 75W modification application assessment:

1. Are any RAPs aware of any cultural values, known by themselves or others, within the proposed amended project boundary?
2. If so, what management strategies would you suggest?
3. Is the existing methodology for the salvage of cultural sites satisfactory?
4. Would you agree (or otherwise) that the appropriate way to manage proposed activities within the existing boundary and activities within the proposed new boundary, is in accordance with the CHMP.
5. If the activities are managed in accordance with the protocols and methodology in the CHMP that would require – field inspection, artefact collection, subsurface potential assessment, test pits as required and grader scrapes. Sites that can be avoided and are located adjacent to works, will be fenced for protection.

Appendix 1 contains Table 1 that provides information on all infrastructure and activities subject to the proposed Section 75W modification application. Each item listed in Table 1 is numbered and the location of each item corresponds with the numbering in Figure 1 and Figure 2 of Appendix 2

Registered Office:
Level 28 AMP Place
10 Eagle Street
GPO Box 1127
Brisbane QLD 4000
Australia

Telephone:
+61-7-3222 5600

Facsimile:
+61-7-3003 1900

The minutes of the extraordinary ASCF held on the 16th October 2014 are attached for review (Appendix 3).

The proposed pipeline, bore and power line routes (excluding Heathcliffe which has been subject to other assessments) have been inspected over a period of time with numerous RAPs. Artefacts have been located on Bellevue, Victoria Park and Cooboobindi properties. In all cases the artefacts are located in areas that have been disturbed by ploughing, grazing and access tracks. However, all artefacts and areas of potential impact would be subject to the CHMP methodology if the proposed Section 75W modification application is approved (Figure 3).

Boggabri Coal would sincerely appreciate your comments regarding the questions posed on page 1 (cultural values, management of those values, the effectiveness of the current CHMP and the application of the CHMP to the revised boundary). If you could supply your comments by email, or mail to Chase Dingle (see below) or Angela Besant (angela@insiteheritage.com.au; PO Box 98 Wangi Wangi NSW 2267) within the next fortnight it would be greatly appreciated.

If you have any questions or comments, please contact Chase Dingle on 0467963379, or email Chase.Dingle@boggabricoal.com.au.

Yours sincerely,



**CHASE DINGLE
BOGGABRI COAL
PO BOX 12, BOGGABRI NSW 2382**

ATTACHMENTS

- APPENDIX 1 LIST OF ITEMS TO BE INCLUDED IN THE 75W APPLICATION**
- APPENDIX 2 FIGURES 1 AND 2 PROPOSED PROJECT BOUNDARY ADJUSTMENT**
- APPENDIX 3 MINUTES EXTRAORDINARY ASCF 16TH OCTOBER 2014**

APPENDIX 1 – LIST OF ITEMS TO BE INCLUDED IN THE 75W APPLICATION

Item no.	Items outside the existing project boundary	Existing or proposed
1	Stockpile, vehicle loop, landscaped stockpile and contour drains	Existing and disturbed – no earth works proposed
4	11kv powerline	Existing now under BC responsibility
5	11kv Daiseymede bore and access track	Existing
7	Bellevue borefield, powerline & pipeline	Proposed has been inspected with RAPS
30	Additional proposed borefield, pipelines and access Victoria Park, Heathcliffe, Cooboobindi etc	Proposed – inspected by RAPS
8 & 11	11kv and 132 kv, service tracks and pads	Existing no earthworks proposed
9	Underground power line (east of bifurcation)	Existing no earth works proposed
10	Incorporation of borrow pits adjacent to the haul rd	Existing – may require stabilisation of the dam walls. Areas have been inspected by RAPS during 2013,
Item No.	Items inside the existing project boundary	Activity
14	ROM road and drainage	The road has been inspected by RAP – will be subject to the CHMP methodology
16	Rejects road and drainage	The road has been inspected by RAP – will be subject to the CHMP methodology
17	Sed Dam 3 additional capacity	Inspected by RAP subject to CHMP
18	Sed Dam 12 additional capacity	Inspected with RAP subject to CHMP methodology
20	Dozer service area	Within cleared area
25	Equipment recycling yard	Within cleared area
33	Increased haulage across Therribri Road	No surface impact
38	Fence disturbance boundary	Subject to CHMP methodology
39	Increase ROM footprint	Within cleared area
41	Additional fuel storage	No surface impact – within cleared area

APPENDIX 2 - FIGURES 1 AND 2 PROPOSED PROJECT BOUNDARY ADJUSTMENTS

ASCF Meeting Invitation 18/11/2014 (Mailed/mailed 23/10/2014)



BOGGABRI COAL
PTY LIMITED

ABN 77 122 087 398

A Member of the
Idemitsu Australia
Resources Group

Boggabri Mine
386 Leard Forest Rd
Boggabri NSW 2382
Australia

PO Box 12
Boggabri NSW 2382
Australia

Telephone:
+61-2-6743 4775

Facsimile:
+61-2-6743 4496

Ref: 05-067-569

23 October 2014

Dear Stakeholder,

RE: - ASCF Meeting Tuesday 18th November 2014

Boggabri Coal would like to invite Registered Aboriginal Parties to attend next ASCF meeting. Please see below for meeting details:

Date: Tuesday 18th November, 2014
Time: 10 am until 1pm
Location: Redchief LALC, Chandos St, Gunnedah

As a number of important issues will be discussed at the meeting, your attendance and input would be greatly appreciated.

Refreshments and lunch will be served at 1pm. We look forward to seeing you there.

For catering purposes please RSVP by text, email or phone. If you have any questions, please contact Angela Besant on 0412836031 or Chase Dingle on 0467963379.

Yours sincerely,

CHASE DINGLE
BOGGABRI COAL

Registered Office:
Level 28 AMP Place
10 Eagle Street
GPO Box 1127
Brisbane QLD 4000
Australia

Telephone:
+61-7-3222 5600

Facsimile:
+61-7-3003 1900

ASCF Meeting Agenda 18/11/2014 (Mailed/Emailed 23/10/2014)



AGENDA			
Meeting:	Boggabri Coal ASCF Meeting		
Date:	18 November 2014	Start time	10.00 am
		Finish time	1.00 pm
Venue:	Red Chief Lands Council, 26 Chandos Street, Gunnedah		
Chairperson:	Chase Dingle		
Recurrence:	As required		
Meeting status:	N/A		
Required attendees:	All Boggabri Coal RAP's + Boggabri Coal Pty Limited		
Next Meeting	TBA		

MEETING AGENDA	
1	Welcome to Country
2	Table of previous meeting minutes
3	Voting rights - Stakeholders and non- Stakeholders, including clarification on the following terms: <ul style="list-style-type: none"> • Registered Aboriginal Parties (RAP's) also known as Stakeholders • Interested Aboriginal Parties (IAP's) •
4	S75 Modification – discussion on findings following extraordinary ASCF meeting on the 16/10/2014 & further consultation
5	Conclusion of Stage One works - review findings of Stage 1 assessment & discussion on the effectiveness of the methodology applied to date
11.00am – 11.30am Break	
8	Cultural Awareness Package – zero comments received from RAPs to date
9	Community Open Day – Boggabri Coal Project artefact classification day with stakeholders
10	Overview of the 2015 Tree Clearing Program
11	Other matters arising

Meeting Minutes 16/10/2014 (Mailed/Emailed 23/10/2014)

OVERVIEW	
Meeting	ASCF
Date	16 October 2014
Time	10.00am
Venue	Gunnedah PCYC, View St Gunnedah
Chairperson	Chase Dingle
Attendees	As per sign on sheet
Apologies	Cacatua Consultants Michael Trindall Steven Talbott Les Field Craig Trindall Gunida Gunuya Cindy Foley Dolly Talbott – Dolly asked that it be noted that the short time frame of the notice of the meeting was an issue particularly for those who are working
Guests	
Next Meeting	18 th November 2014

MEETING OBJECTIVES	
1	To consult the details of a proposed s75W modification to the project approval.
2	To confirm the salvage methodology applied under the CHMP would be most suitable to the salvage of any items identified in the s75W modification.
3	
4	
5	
6	

ITEM	AGENDA/DISCUSSION ITEMS
1.	Discussion prior to the meeting formally commencing about: <ul style="list-style-type: none"> Lloyd Matthews (LM) requesting clarification on the induction of some stakeholders, and The correct contact details of stakeholders,
2.	Confusion about the certain terminology regarding Stakeholders was to be raised as an agenda item at the next ASCF meeting.
3.	Dave Horton (DH) raised the issue of the short notice period of the meeting. Chase Dingle (CD) apologised for this and reiterated that the extraordinary nature of the meeting necessitated the short notice period. The usual ASCF will take place in November and more notice will be given.
4.	Natasha Talbott (NT) suggested that any assertions from stakeholders about not being invited to meetings could be avoided by sending invitations by registered post. Angela Besant (AB) noted that this may delay the invitations which in this case was short

	notice. This meeting notice was sent by express post, sms, email and phone calls.
5.	Stakeholders were reminded by CD that issues to do with: rostering, pay levels, communication protocols and any other issues that were not the objectives of the meeting under way were to be discussed at the next ASCF meeting in approximately 4 weeks.
6.	CD - Any stakeholders that were not in attendance would be consulted by being provided all the information via post.
7.	Mitchum Neves (MN) commented that all stakeholders listed on the OEH website who are from the area should be consulted about the proposed project modification. AB replied that the consultation process required the archaeologist / proponent to write to every person on the OEH list and invite them to register. Being on the OEH list doesn't mean immediate registration, as some people are not interested in particular projects.
8.	NT queried why the the meeting was being held in the PCYC and not the land council. CD noted that a room was not available due to the short notice period.
9.	CD formerly opened the meeting , discussed the agenda and objectives, meeting protocols and introduced new staff members Ray Balks (RB) and Hamish Russell (HR) who addressed the meeting.
10.	Welcome to Kamilaroi Country and 1 minute silence in consideration of recent sorry business by Cyril Sampson (CS) and MN.
11.	HR detailed the list of items subject to the s75W modification application & ensured all participants had a copy of the relevant resources (see attachments).
12.	AB & CD discussed the meeting objectives and also the due diligence process that has been executed in the last few weeks to areas subject to the project boundary modification. As it is proposed to manage the artefacts located by due diligence as per the current methodology, feedback on the current methodology is essential. AB outlined the artefacts located during the due diligence surveys and their context, that is all were located in areas that have been subject to disturbance by roads, or farming. Several Raps present had been involved in these surveys(NT, MN and DH) They were able to confirm that the work had been done appropriately and in their opinion the sites would be well managed by application of the methodology in the CHMP.
13.	Dick Talbott (DT) queried the proximity of the bores to each other. JR responded that the bores were approximately no less than a kilometre from each other.
14.	MN queried whether Roma #2 was still being considered as part of the modicifation and was informed that it was.
15.	MN questioned the value of desktop assessments , and CD replied that we'd only do desktop assessments when access was restricted and that walkovers/grader scrapes and test pits would be undertaken when access became available.

16.	JR mentioned that numerous area's subject of the modification were highly disturbed farming area's that had been extensively subjected to agricultural practices.
17.	MN noted the presence of a cluster of artefacts (along one pipeline route) in one of the area's proposed to be included in the modification. AB advised that each artefact has had its position recorded by the surveyors and a corridor identified that the pipeline could be placed if on the surface. If it is required to bury the pipeline the site will be salvaged as per the CHMP. MN asked about fencing off the artefacts. CD replied that fencing off the artefacts would be triggered if works are within 100m of works in accordance with the CHMP.
18.	DT noted that artefacts could be found in rock pick piles around the previously constructed 'Borrow Pits'. AB confirmed that all borrow pits had been surveyed during site salvage works.
19.	MN suggested that the artefact cluster could be fenced or a compound established. CD assured that this would take place not required for disturbance as required by the CHMP.
20.	AB requested feedback on the s75W items that had been raised. There were no issues or concerns raised by any participant.
21.	NT raised issues about the stakeholder consultation process, specifically those who are not registered for work. CD commented that we'd like to see more RAP's and at the next meeting we would be providing clarity on terminology, who is registered, and work rosters.
22.	DT enquired if there was any work programmed for before Christmas and as to how the roster was being determined. CD responded that not much work is coming up in the short term and that rosters were to be discussed at the next meeting.

Copy of Email of ASCF (18/11/2014) Invitation, Meeting Agenda, Previous Meeting Minutes (16/10/2014), and Request for comment on 75W Modification.

From: Taryn Gooley
To: cacatua4service@tpg.com.au; gomilaroi@hotmail.com; tamm.v@quidagunwah.com.au; mdeslee@hotmail.com; "m-deslew@hotmail.com"; "minminaboriginalcorporation@yahoo.com.au"; ceo@redchiefalg.com.au; "talbominda@hotmail.com"; whitecockatoo@hotmail.com; ronaldlong3270@yahoo.com.au; briandraper0013@gmail.com; scott.talbot80@hotmail.com; triqunorth@yahoo.com.au; Les Field (lfield@hotmail.com); jacqueshort@live.com; "Email:"
Subject: Invitation to Boggabri Coal ASCF
Date: Thursday, 23 October 2014 2:39:00 PM
Attachments: [image001.png](#)
[05-067-569_23102014_ASCF_Meeting_Invitation.pdf](#)
[ASCF Meeting - Draft Agenda 18112014.pdf](#)
[ASCF Meeting Minutes 16102014.pdf](#)
[05-067-569_75W seeking comments 22102014.pdf](#)

Dear All,

Please find attached an invitation to the next Boggabri Coal ASCF meeting on the 18th November 2014.

Also attached is a draft agenda for the ASCF meeting, the previous extraordinary ASCF meeting minutes and a letter regarding the CHMP methodology and 75W modification.

A hard copy of this information has been mailed to the address you have registered with Boggabri Coal.

Regards,

Taryn Gooley | **Archaeologist**



INSITE HERITAGE
PTY LTD

PO Box 98 Wangi Wangi NSW 2267
R/F 0249755818 | M 0448065794

From: [Taryn Gooley](#)
To: ["skitzoozzy@hotmail.com"](mailto:skitzoozzy@hotmail.com)
Subject: Invitation to Boggabri Coal ASCF
Date: Thursday, 23 October 2014 1:55:00 PM
Attachments: [image001.png](#)
[ASCF Meeting - Draft Agenda 18112014.pdf](#)
[05-067-569 23102014 ASCF Meeting Invitation.pdf](#)
[ASCF Meeting Minutes 16102014.pdf](#)
[05-067-568 75W seeking comments 22102014.pdf](#)

Dear Mr Talbott,

Please find attached an invitation to the next Boggabri Coal ASCF meeting on the 18th November 2014.

Also attached is a draft agenda for the ASCF meeting, the previous extraordinary ASCF meeting minutes and a letter regarding the CHMP and 75W modification.

Regards,

Taryn Gooley | **Archaeologist**



From: [Taryn Gooley](#)
To: "Dolly Talbott"
Subject: Boggabri Coal ASCF Invitation
Date: Thursday, 23 October 2014 1:55:00 PM
Attachments: [05-067-568 75W seeking comments 22102014.pdf](#)
[ASCF Meeting Minutes 16102014.pdf](#)
[ASCF Meeting - Draft Agenda 18112014.pdf](#)
[05-067-569 23102014 ASCF Meeting Invitation.pdf](#)
[image001.png](#)

Dear Ms Talbott,

Please find attached an invitation to the next Boggabri Coal ASCF meeting on the 18th November 2014.

Also attached is a draft agenda for the ASCF meeting, the previous extraordinary ASCF meeting minutes, and a letter regarding the CHMP and 75W modification.

Regards,

Taryn Gooley | **Archaeologist**



INSITE HERITAGE
PTY LTD

PO Box 98 Wangi Wangi NSW 2267
P/F 0249755818 | M 0448065794

Express Post Record of ASCF (18/11/2014) Invitation, Meeting Agenda, Previous Meeting Minutes (16/10/2014), and Request for comment on 75W Modification.

Sender to keep
604 12899025 095

Cacatua Cultural Consultants
Mr George Sampson
22 Ibis Parade
Woodberry NSW 2322

Sender to keep
604 12898912 099

Gomilaroi Cultural Consultants
Mr Aaron Talbott
6 Bando St
Gunnedah NSW 2380

Sender to keep
604 14057605 095

BB Consultants
Mr Lloyd Matthews
21 Bando St
Gunnedah NSW 2380

Sender to keep
604 14049432 098

TNL Site Trackers
Mr Troy Silver
3 Newell Ave
Gunnedah NSW 2380

Sender to keep
604 14049433 095

Mr Ronald Long
32 High St
Gunnedah NSW 2380

Sender to keep
604 14057600 090

Mr Shannon Draper
135/2 Bloomfield St
Gunnedah NSW 2380

Sender to keep
604 14057597 093

Mr Scott Talbott
50 Jaegar Ave
Gunnedah NSW 2380

Sender to keep
604 14049438 090

Mr James Foley
7 Mitchell Place
Gunnedah NSW 2380

Sender to keep
604 12899026 092

Mr Reg Talbott
31 Little Connadily St
Gunnedah NSW 2380

Sender to keep
604 14049430 094

Gunida Gonyah Aboriginal Corporation
Ms Jane Bender
PO Box 439

Sender to keep
604 14057604 098

Deslee Talbott Consultant
Ms Deslee Matthews
2/19 South St
Gunnedah NSW 2380

Sender to keep
604 12899024 098

Gomerai Namoi Traditional Owners
Mr Steve Talbott
73 Kiah Rd
Gillieston Heights NSW 2321

Sender to keep
604 14057602 094

T & G Cultural Consultants
Tony & Greg Griffiths
4 Wattle St
Gunnedah NSW 2380

Sender to keep
604 14057599 097

Gomery Cultural Consultants
Mr David Horton
56 Little Connadily St
Gunnedah NSW 2380

Sender to keep
604 12898913 096

Craig Trindall Consulting
Mr Craig Trindall
29 Doyle St
Narrabri NSW 2390

Sender to keep
604 14049437 093

Mr Cyril Sampson
26 Dewhurst St
West Tamworth NSW 2340

Sender to keep
604 12898911 092

Bigundi Biame Traditional People
Mr Wayne Griffiths
PO Box 254
Gunnedah NSW 2380

Sender to keep
604 14057606 092

Ms Gloria Foley
7 Mitchell Place
Gunnedah NSW 2380

Sender to keep
604 14057603 091

Red Chief LALC
Ms Toni Comber
PO Box 745
Gunnedah NSW 2380

Sender to keep
604 14049431 091

White Cockatoo
Mr Michael Long
17 Albion St
Gunnedah NSW 2380

Sender to keep
604 14057601 097

Ms Cindy Foley
33 Jaegar Ave
Gunnedah NSW 2380

Sender to keep
604 14057598 090

Mr Brian Draper
7 Sovereign St
Dubbo NSW 2830

Sender to keep
604 14049439 097

LJ Culture
Mr Les Field
4 Hinton Dr
Gunnedah NSW 2380

Sender to keep
604 14049436 096

Mr Sonny Fitzroy
18 South St
Gunnedah NSW 2380

Lift and peel
Sender to keep
604 14049435 099

Mr Michael Trindall
28 Boundary St
Wee Waa NSW 2388

Lift and peel
Sender to keep
604 14049434 092

Mr Jason Wilson
23 Clews St
Dubbo NSW 2830

Lift and peel
Sender to keep
604 14049420 095

Elli Lewis Cultural Heritage
Consultants
Ms Patricia Hands
20 Acacia Circuit
Singleton NSW 2330

Min Min Aboriginal Corporation

Ms Gwen Griffen
PO Box 877

Lift and peel
Sender to keep
604 14049421 092

Correspondence 23/10/2014 (Gomeroi Traditional Custodians)

Elders Meeting Invitation 17/11/2014



BOGGABRI COAL
PTY LIMITED

ABN 77 122 087 398

A Member of the
Idemitsu Australia
Resources Group

Boggabri Mine
386 Leard Forest Rd
Boggabri NSW 2382
Australia

PO Box 12
Boggabri NSW 2382
Australia

Telephone:
+61-2-6743 4775

Facsimile:
+61-2-6743 4496

Ref: 05-067-570

23 October 2014

Dear Stakeholder,

RE: - Elders Meeting Monday 17th November 2014

Boggabri Coal would like to invite you to attend the Elders meeting on Monday 17th of November 2014. Please see below for meeting details:

Date: Monday 17th of November 2014
Time: 10 am until 12pm
Location: Redchief LALC, Chandos St, Gunnedah

As a number of important issues will be discussed at the meeting, your attendance and input would be greatly appreciated.

Refreshments and lunch will be served at 12pm. We look forward to seeing you there.

If you have any questions, please contact Angela Besant on 0412836031 or Chase Dingle on 0467963379.

Yours sincerely,

CHASE DINGLE
BOGGABRI COAL

Registered Office:
Level 28 AMP Place
10 Eagle Street
GPO Box 1127
Brisbane QLD 4000
Australia

Telephone:
+61-7-3222 5600

Facsimile:
+61-7-3003 1900

Elders Meeting Draft Agenda



AGENDA	
Meeting:	Boggabri Coal 2014 Post-Fieldwork Meeting
Date:	17 November 2014
	Start time 10.00 am
	Finish time 12.00 pm
Venue:	Red Chief Lands Council, 26 Chandos Street, Gunnedah
Chairperson:	Chase Dingle
Recurrence:	As required
Meeting status:	N/A
Required attendees:	Gomerioi Traditional Custodians + Boggabri Coal Pty Limited
Next Meeting	TBA

MEETING AGENDA	
1	Welcome to Country
2	Introduction to new BCPL General Manager Operations
3	S75 Modification – discussion on findings following extraordinary ASCF meeting on the 16/10/2014 & further consultation
4	Cultural Awareness Package – no alternative words for the history section received to date
5	Community Open Day – Boggabri Coal Project artefact classification day with stakeholders
6	Overview of the 2015 Tree Clearing Program
12.00pm Finish	

Email Invitation to GTC 23/10/2014

Message  05-067-568 75W seeking comments 22102014.pdf (407 KB)  05-067-570 23102014_Elders_Meeting.pdf (39 KB)
 GTC Meeting - Draft Agenda 17112014.pdf (151 KB)  ASCF Meeting Minutes 16102014.pdf (240 KB)

From: Angela Besant [<mailto:angela@insiteheritage.com.au>]

Sent: 23 October 2014 14:34

To: gomerotraditionalcustodians@hotmail.com

Subject: boggabri coal information

Dear Gomeri Traditional Custodians,

Please find attached a letter regarding the 75W application that Boggabri Coal will lodge with the Dept of Planning in the next few weeks. Also attached is an invitation and agenda for the next elders meeting on the 17th November, 2014. In addition the minutes from a meeting held on the 16th October, 2014 to discuss the 75W application, is also included.

Please note that I have not been able to mail a hard copy as I don't have a mailing address for the GTC. If you would like one sent, please let me know. If you have any queries please don't hesitate to give myself or Chase Dingle a call.

Regards

Angela

Angela Besant | Director



PO Box 98 Wangi Wangi NSW 2267
P/F 0249755818 | M 0412836031

Correspondence 19/11/2014

Notification of Extension of Review Period for 75W Modification

From: [Liz Wyatt](#)
To: "[angela](#)"; "[Chase Dingle](#)"
Cc: "[Crick, Steven](#)"
Bcc: "[Petewatto24@gmail.com](#)"; "[esther.tiobe@bionond.com.au](#)"; "[kyle.trindall@hotmail.com](#)"; "[nanaocanna@yahoo.com.au](#)"; "[lfield@hotmail.com](#)"; "[triguonorth@yahoo.com.au](#)"; "[scott.talbott80@hotmail.com](#)"; "[ronaldlong3270@yahoo.com.au](#)"; "[whitecockatoo1@hotmail.com](#)"; "[talbo.minda@hotmail.com](#)"; "[skitsoozzy@hotmail.com](#)"; "[mimminaboriginalcorporation@yahoo.com.au](#)"; "[tammy@unidaunyah.com.au](#)"; "[oomilaroi@hotmail.com](#)"; "[cacabua4service@tpo.com.au](#)"; "[Donna Sampson](#)"
Subject: Boggabri Coal 75W Modification Extension of Review and Comment period
Date: Wednesday, 19 November 2014 2:50:00 PM
Attachments: [image006.png](#)

Dear Stakeholder,

RE: - Cultural Heritage Management Plan Methodology and 75W Modification

Further to the information package sent on the 23rd October 2014 regarding the 75W Modification application we wish to advise that the review and comment period has been extended to the 28th November 2014.

To date the six RAPs at the ASCF meeting on the 18th November, 2014 have supported the management strategy of the modification. The management strategy is to amend the CHMP with the revised project boundary and manage the area in accordance with the CHMP.

As mentioned in the information package Boggabri Coal seek comment on the following to assist with the proposed Section 75W modification application assessment:

1. Are any RAPs aware of any cultural values, known by themselves or others, within the proposed amended project boundary?
2. If so, what management strategies would you suggest?
3. Is the existing methodology for the salvage of cultural sites satisfactory?
4. Would you agree (or otherwise) that the appropriate way to manage proposed activities within the existing boundary and activities within the proposed new boundary, is in accordance with the CHMP.
5. If the activities are managed in accordance with the protocols and methodology in the CHMP that would require – field inspection, artefact collection, subsurface potential assessment, test pits as required and grader scrapes. Sites that can be avoided and are located adjacent to works, will be fenced for protection.

We would sincerely appreciate your comments regarding the issues outlined above. If you could supply your comments by email, mail or phone to Angela Besant or Chase Dingle on the contact details below by the **28th November 2014** it would be greatly appreciated.

Chase Dingle, Boggabri Coal Ph: 0467963379, Email: Chase.Dingle@boggabriccoal.com.au Mail: PO Box 12 Boggabri NSW 2382

Angela Besant, Insite Heritage Ph: 0412836031, Email: angela@insiteheritage.com.au Mail: PO Box 98 Wangi Wangi NSW 2267

In addition to the information forwarded on the 23.10.14, if you would like a full copy of the 75W modification report or any other information, please do not hesitate to contact us.

Regards

Express Post Record for RAP's Without Email

Stakeholder	Company	Express Post Record 75WMod review period extension 19/20.11.14
Gloria Foley	Gunnedah Aboriginal Elders Justice Group	60414049422099
Troy Silver	TNL Site Trackers	60414049423096
Tony Griffiths	T & G Cultural Consultants	60414049424093
Cindy Foley	Cindy Foley	60414049425090
Shannon Draper		60414049426097
James Foley	James Foley	60414049427094
Patricia Hands	Elli Lewis Cultural Heritage Consultants	60414049428091

Correspondence 13/03/2015

Invitation to ASCF 15/04/2015 – Sent By Boggabri Coal



BOGGABRI COAL
PTY LIMITED

ABN 77 122 087 398

A Member of the
Idemitsu Australia
Resources Group

Boggabri Mine
386 Leard Forest Rd
Boggabri NSW 2382
Australia

PO Box 12
Boggabri NSW 2382
Australia

Telephone:
+61-2-6743 4775

Facsimile:
+61-2-6743 4496

Ref: 2T

13 March 2015

Dear Stakeholder,

RE: - ASCF Meeting Wednesday 15th April 2015

Boggabri Coal would like to invite Registered Aboriginal Parties to attend an ASCF meeting to be held on Wednesday the 15th April 2015 at the following location:

Date: Wednesday 15th April 2015
Time: 10 am until 1pm.
Location: Gunnedah PCYC

The purpose of the meeting will be to update RAPs on all matters relating to the Boggabri Coal project.

We look forward to seeing you there.

For catering purposes please RSVP by text, email or phone. If you have any questions, please contact Angela Besant on 0412836031 or Chase Dingle on 0467963379.

Yours sincerely,

HAMISH RUSSELL
BOGGABRI COAL

Registered Office:
Level 28 AMP Place
10 Eagle Street
GPO Box 1127
Brisbane QLD 4000
Australia

Telephone:
+61 7 3222 5600

Facsimile:
+61 7 3003 1900

ASCF 15/04/2015 Meeting Agenda



BOGGABRI COAL
PTY LIMITED

ABN 77 122 087 398

A Member of the
Idemitsu Australia
Resources Group

Boggabri Mine
386 Leard Forest Rd
Boggabri NSW 2382
Australia

PO Box 12
Boggabri NSW 2382
Australia

Telephone:
+61-2-6743 4775

Facsimile:
+61-2-6743 4496

Ref: [Click here to enter text.](#)

9 April 2015

AGENDA ASCF 15th APRIL 2015

Item	
1	Welcome to Country.
2	Introductions
3	Review previous minutes
4	Selection of meeting venue
5	Overview of the 2015 tree clearing program
6	Flora and Fauna Management
7	Updating of the CHMP
8	Approval of Modification 4 and the Proposed Modification 5
9	
4	Other matters arising

Registered Office:
Level 28 AMP Place
10 Eagle Street
GPO Box 1127
Brisbane QLD 4000
Australia

Telephone:
+61-7-3222 5600

Facsimile:
+61-7-3003 1900

Appendix F – Meeting Minutes and Attendance Sheets

ASCF Meeting Minutes 16/10/2014

OVERVIEW	
Meeting	ASCF
Date	16 October 2014
Time	10.00am
Venue	Gunnedah PCYC, View St Gunnedah
Chairperson	Chase Dingle
Attendees	As per sign on sheet
Apologies	Cacatua Consultants Michael Trindall Steven Talbott Les Field Craig Trindall Gunida Gunuya Cindy Foley Dolly Talbott – Dolly asked that it be noted that the short time frame of the notice of the meeting was an issue particularly for those who are working
Guests	
Next Meeting	18 th November 2014

MEETING OBJECTIVES	
1	To consult the details of a proposed s75W modification to the project approval.
2	To confirm the salvage methodology applied under the CHMP would be most suitable to the salvage of any items identified in the s75W modification.
3	
4	
5	
6	

ITEM	AGENDA/DISCUSSION ITEMS
1.	Discussion prior to the meeting formally commencing about: <ul style="list-style-type: none"> Lloyd Matthews (LM) requesting clarification on the induction of some stakeholders, and The correct contact details of stakeholders,
2.	Confusion about the certain terminology regarding Stakeholders was to be raised as an agenda item at the next ASCF meeting.
3.	Dave Horton (DH) raised the issue of the short notice period of the meeting. Chase Dingle (CD) apologised for this and reiterated that the extraordinary nature of the meeting necessitated the short notice period. The usual ASCF will take place in November and more notice will be given.
4.	Natasha Talbott (NT) suggested that any assertions from stakeholders about not being invited to meetings could be avoided by sending invitations by registered post. Angela Besant (AB) noted that this may delay the invitations which in this case was short

	notice. This meeting notice was sent by express post, sms, email and phone calls.
5.	Stakeholders were reminded by CD that issues to do with: rostering, pay levels, communication protocols and any other issues that were not the objectives of the meeting under way were to be discussed at the next ASCF meeting in approximately 4 weeks.
6.	CD - Any stakeholders that were not in attendance would be consulted by being provided all the information via post.
7.	Mitchum Neves (MN) commented that all stakeholders listed on the OEH website who are from the area should be consulted about the proposed project modification. AB replied that the consultation process required the archaeologist / proponent to write to every person on the OEH list and invite them to register. Being on the OEH list doesn't mean immediate registration, as some people are not interested in particular projects.
8.	NT queried why the the meeting was being held in the PCYC and not the land council. CD noted that a room was not available due to the short notice period.
9.	CD formerly opened the meeting , discussed the agenda and objectives, meeting protocols and introduced new staff members Ray Balks (RB) and Hamish Russell (HR) who addressed the meeting.
10.	Welcome to Kamilaroi Country and 1 minute silence in consideration of recent sorry business by Cyril Sampson (CS) and MN.
11.	HR detailed the list of items subject to the s75W modification application & ensured all participants had a copy of the relevant resources (see attachments).
12.	AB & CD discussed the meeting objectives and also the due diligence process that has been executed in the last few weeks to areas subject to the project boundary modification. As it is proposed to manage the artefacts located by due diligence as per the current methodology, feedback on the current methodology is essential. AB outlined the artefacts located during the due diligence surveys and their context, that is all were located in areas that have been subject to disturbance by roads, or farming. Several Raps present had been involved in these surveys(NT, MN and DH) They were able to confirm that the work had been done appropriately and in their opinion the sites would be well managed by application of the methodology in the CHMP.
13.	Dick Talbott (DT) queried the proximity of the bores to each other. JR responded that the bores were approximately no less than a kilometre from each other.
14.	MN queried whether Roma #2 was still being considered as part of the modicifation and was informed that it was.
15.	MN questioned the value of desktop assessments , and CD replied that we'd only do desktop assessments when access was restricted and that walkovers/grader scrapes and test pits would be undertaken when access became available.

16.	JR mentioned that numerous area's subject of the modification were highly disturbed farming area's that had been extensively subjected to agricultural practices.
17.	MN noted the presence of a cluster of artefacts (along one pipeline route) in one of the area's proposed to be included in the modification. AB advised that each artefact has had its position recorded by the surveyors and a corridor identified that the pipeline could be placed if on the surface. If it is required to bury the pipeline the site will be salvaged as per the CHMP. MN asked about fencing off the artefacts. CD replied that fencing off the artefacts would be triggered if works are within 100m of works in accordance with the CHMP.
18.	DT noted that artefacts could be found in rock pick piles around the previously constructed 'Borrow Pits'. AB confirmed that all borrow pits had been surveyed during site salvage works.
19.	MN suggested that the artefact cluster could be fenced or a compound established. CD assured that this would take place not required for disturbance as required by the CHMP.
20.	AB requested feedback on the s75W items that had been raised. There were no issues or concerns raised by any participant.
21.	NT raised issues about the stakeholder consultation process, specifically those who are not registered for work. CD commented that we'd like to see more RAP's and at the next meeting we would be providing clarity on terminology, who is registered, and work rosters.
22.	DT enquired if there was any work programmed for before Christmas and as to how the roster was being determined. CD responded that not much work is coming up in the short term and that rosters were to be discussed at the next meeting.

Meeting Attendance Sheet 16/10/2014

Boggabri Coal ASCF 2014 16th Oct 2014 PCYC

Name	Representing
DAVID HORTON	SOMERY C/C
SAMUEL CAMERON	TBC Cultural Management
PAUL MOODIE	"Black Tracker" T.O.
Natalie Talbott	Natalie Talbott
MARION TALBOTT	Marion Talbott
MICHAEL NEAVE	REDCRUISE (AL)
RITA LONG (Elder)	(BRIAN DRAPER)
CYRIL SAMPSON	CYRIL SAMPSON PTY LTD
LLOYD MATTHEWS	B.B. ELDER
Jack Talbott	Elder S
Robert Miller	34 Baxter St Gunnedah
MICHAEL LONG	WHITECOCKATOO
Delma Jones	110 Avenue Rd Gunnedah S. ELDER
Joan Slay	

Send out
plans ect.
minutes

GTC Meeting Minutes 17/11/2014

OVERVIEW	
Meeting	GTC Elders Meeting
Date	17 November 2014
	Time 11am
Venue	Red Chief LALC, Gunnedah
Chairperson	Chase Dingle
Attendees	As per sign on sheet
Apologies	
Guests	
Next Meeting	

MEETING OBJECTIVES	
1	S75 Modification – discussion on findings following extraordinary ASCF meeting on the 16/10/2014 & further consultation
2	To confirm the salvage methodology applied under the CHMP would be most suitable to the salvage of any items identified in the s75W modification.
3	Cultural Awareness Package – no alternative words for the history section received to date
4	Community Open Day – Boggabri Coal Project artefact classification day with stakeholders
5	Overview of the 2015 Tree Clearing Program
6	

ITEM	AGENDA/DISCUSSION ITEMS
1.	<p>Welcome to Country – Neville Sampson (NS)</p> <p>Chase Dingle (CD) – introduced the mine manager and environment manager Ray Balks (RB) and Hamish Russell (HR)</p>
2.	<p>Elders presented their agenda for the meeting</p> <ul style="list-style-type: none"> • Ceremony – access to NV48, Use of crystal quarry • Cultural awareness package • Tour including modified areas • Access to biodiversity areas • Scar tree – need to look inside with a cherry picker • Water use and how is it managed.
3.	<p>Meeting started with BC agenda</p> <p>CD – overview of the 75W application.</p>

4.	<p>Jim – how might drawing from bores affect water table / river?</p> <p>Dick Talbott (DT) – also concerned with water use</p> <p>Jane Delaney John (JDJ) - fish are the totem of this community – how is fish habitat being managed in relation to water draw from the river in this dry time. Also people seen working at the river – clarify what they are doing?</p> <p>CD – gave overview of how water licencing works and explained that one pipeline inlet was being relocated.</p> <p>Action - have office of water and North West Land Management Group come and explain the system to the group</p>
5.	<p>Mitchum Neave (MN) – question re Boggabri Coal being purchased.</p> <p>RB – clarified that 10% is being purchased by a Japanese company – end user of coal.</p>
6.	<p>CD - discussed the 2015 tree clearing program.</p> <p>DT - asserted that: ‘ not all birds come back’ and that some birds don’t come every year. And that Vicory mine has a bird on top of their list that Maules creek doesn’t have on their list.</p> <p>Cyril Sampson (CS) - noted that Maules creek only had a single bush food tree listed in their assessment. Noted the various types of bush medicine that could be propagated such as native pear, etc.</p> <p>Discussion had on harvesting bush foods prior to clearing.</p> <p>CS - produced his bush foods book.</p> <p>General discussion re tree clearing</p> <p>Action – A copy of the flora and fauna management – clearing – report for Elders group.</p> <p>Action – possible presentation by Flora and Fauna consultants</p> <p>Cyril Sampson (CS) – raised concerns re bush foods and medicines – would like to check</p>

	<p>clearing areas prior to collect certain plants?</p> <p>DT – greater concerns with the removal of forest than the mine per se.</p> <p>JDJ – potential to harvest / propagate bush foods.</p> <p>CD – shall give it consideration.</p>
7.	<p>MN - noted that not all people had been consulted in the 'Cultural Heritage Value Assessment' and asserted that only people who'll bend the right way had been contacted. Mitchum noted that "the system was not culturally sensitive", the community wanted maps and would like to arrange a site visit.</p> <p>JDJ – cultural offsets – the BDO areas have not been discussed as to whether the properties offer potential for cultural offsets also.</p> <p>CD – that is dealt with in the CHS which is not in his hands. Will refer the comments on to those who are dealing with it.</p> <p>JDJ – discussed why this group didn't participate in the CHS workshops. – organised in a culturally inappropriate way. The group needs a map identifying the locations of BDO properties and from that the group can identify which properties they may wish to visit.</p> <p>CD – will pass on to those people dealing with the CHS</p> <p>General query about records of injured animals.</p> <p>Discussion on location of keeping place was heard.</p> <p>Cultural awareness package feedback was received, ceremony was discussed. Short film/photo's proposal was discussed. Discussed about who ever was to film would have to quote. Budget would have to be developed.</p>
8.	<p>JDJ – motion to have more senior BC staff attend meetings – raised in April and at other meetings.</p> <p>Action - Motion moved again to request more senior staff to meet with the elders group.</p> <p>Ray will address.</p>
9.	<p>General discussion about site access.</p> <p>Mentioned the Whitehaven access agreement, discussed booking a day to visit sites.</p>

	<p>Discussed requirement for 14 days notice.</p> <p>Site visit timetabled for roughly December. 9th December suggested.</p> <p>Locations such as NV48 and the base of Gins leap. Ceremony to be held. Crystals to be sourced prior to ceremony.</p> <p>Discussed difficulty of sourcing ochre.</p> <p>Discussed ground truthing location of ochre.</p> <p>Discussed gender protocols around sourcing of ochre and crystal. Ochre to be sourced by men, crystal to be sourced by women.</p> <p>Discussion around community open day, and displaying artefacts.</p> <p>JDJ & CD – set date for site visit to NV48 / base of Gins Leap – 28th November meet at RCLALC at 9 am</p> <p>Artefact day – late January. LALC closed till the 16th Jan. Artefact day to be held at the PCYC which has a suitable outdoor area.</p> <p>Dates suggested include the 21st or the 26th of January.</p>
10	Meeting Closed 2:00pm

Meeting Attendance Sheet 17/11/2014

W



Boggabri Coal Meeting 17th November 2014 –Gomeroi Traditional Custodians

NAME	NAME
Sherrill Sampson	
Cyril Sampson	
Margaret Winser	
June Field	
Janet Worless	
Patricia Mackenzie	
Jeanne Rpl	
DAVID Horton	
Terry Matthews	
Cory Matthews	
JAMES THOMAS	
Shane Kennedy	
Lloyd MATTHEWS	
Gracy Wootley	
RHONDA TALBOTT	
Joan Sney	
Liz Ryan	
Herrin Boyd	
Mitchum Neave	

ASCF Meeting Minutes 18/11/2014

OVERVIEW	
Meeting	GTC Elders Meeting
Date	17 November 2014
	Time 11am
Venue	Red Chief LALC, Gunnedah
Chairperson	Chase Dingle
Attendees	As per sign on sheet
Apologies	
Guests	
Next Meeting	

MEETING OBJECTIVES	
1	S75 Modification – discussion on findings following extraordinary ASCF meeting on the 16/10/2014 & further consultation
2	To confirm the salvage methodology applied under the CHMP would be most suitable to the salvage of any items identified in the s75W modification.
3	Cultural Awareness Package – no alternative words for the history section received to date
4	Community Open Day – Boggabri Coal Project artefact classification day with stakeholders
5	Overview of the 2015 Tree Clearing Program
6	

ITEM	AGENDA/DISCUSSION ITEMS
1.	Welcome to Country – Neville Sampson (NS) Chase Dingle (CD) – introduced the mine manager and environment manager Ray Balks (RB) and Hamish Russell (HR)
2.	Elders presented their agenda for the meeting <ul style="list-style-type: none"> • Ceremony – access to NV48, Use of crystal quarry • Cultural awareness package • Tour including modified areas • Access to biodiversity areas • Scar tree – need to look inside with a cherry picker • Water use and how is it managed.
3.	Meeting started with BC agenda CD – overview of the 75W application.

4.	<p>Jim – how might drawing from bores affect water table / river?</p> <p>Dick Talbott (DT) – also concerned with water use</p> <p>Jane Delaney John (JDJ) - fish are the totem of this community – how is fish habitat being managed in relation to water draw from the river in this dry time. Also people seen working at the river – clarify what they are doing?</p> <p>CD – gave overview of how water licencing works and explained that one pipeline inlet was being relocated.</p> <p>Action - have office of water and North West Land Management Group come and explain the system to the group</p>
5.	<p>Mitchum Neave (MN) – question re Boggabri Coal being purchased.</p> <p>RB – clarified that 10% is being purchased by a Japanese company – end user of coal.</p>
6.	<p>CD - discussed the 2015 tree clearing program.</p> <p>DT - asserted that: ‘ not all birds come back’ and that some birds don’t come every year. And that Vicory mine has a bird on top of their list that Maules creek doesn’t have on their list.</p> <p>Cyril Sampson (CS) - noted that Maules creek only had a single bush food tree listed in their assessment. Noted the various types of bush medicine that could be propagated such as native pear, etc.</p> <p>Discussion had on harvesting bush foods prior to clearing.</p> <p>CS - produced his bush foods book.</p> <p>General discussion re tree clearing</p> <p>Action – A copy of the flora and fauna management – clearing – report for Elders group.</p> <p>Action – possible presentation by Flora and Fauna consultants</p> <p>Cyril Sampson (CS) – raised concerns re bush foods and medicines – would like to check</p>

	<p>clearing areas prior to collect certain plants?</p> <p>DT – greater concerns with the removal of forest than the mine per se.</p> <p>JDJ – potential to harvest / propagate bush foods.</p> <p>CD – shall give it consideration.</p>
7.	<p>MN - noted that not all people had been consulted in the 'Cultural Heritage Value Assessment' and asserted that only people who'll bend the right way had been contacted. Mitchum noted that "the system was not culturally sensitive", the community wanted maps and would like to arrange a site visit.</p> <p>JDJ – cultural offsets – the BDO areas have not been discussed as to whether the properties offer potential for cultural offsets also.</p> <p>CD – that is dealt with in the CHS which is not in his hands. Will refer the comments on to those who are dealing with it.</p> <p>JDJ – discussed why this group didn't participate in the CHS workshops. – organised in a culturally inappropriate way. The group needs a map identifying the locations of BDO properties and from that the group can identify which properties they may wish to visit.</p> <p>CD – will pass on to those people dealing with the CHS</p> <p>General query about records of injured animals.</p> <p>Discussion on location of keeping place was heard.</p> <p>Cultural awareness package feedback was received, ceremony was discussed. Short film/photo's proposal was discussed. Discussed about who ever was to film would have to quote. Budget would have to be developed.</p>
8.	<p>JDJ – motion to have more senior BC staff attend meetings – raised in April and at other meetings.</p> <p>Action - Motion moved again to request more senior staff to meet with the elders group.</p> <p>Ray will address.</p>
9.	<p>General discussion about site access.</p> <p>Mentioned the Whitehaven access agreement, discussed booking a day to visit sites.</p>

	<p>Discussed requirement for 14 days notice.</p> <p>Site visit timetabled for roughly December. 9th December suggested.</p> <p>Locations such as NV48 and the base of Gins leap. Ceremony to be held. Crystals to be sourced prior to ceremony.</p> <p>Discussed difficulty of sourcing ochre.</p> <p>Discussed ground truthing location of ochre.</p> <p>Discussed gender protocols around sourcing of ochre and crystal. Ochre to be sourced by men, crystal to be sourced by women.</p> <p>Discussion around community open day, and displaying artefacts.</p> <p>JDJ & CD – set date for site visit to NV48 / base of Gins Leap – 28th November meet at RCLALC at 9 am</p> <p>Artefact day – late January. LALC closed till the 16th Jan. Artefact day to be held at the PCYC which has a suitable outdoor area.</p> <p>Dates suggested include the 21st or the 26th of January.</p>
10	Meeting Closed 2:00pm

Meeting Attendance Sheet 18/11/2014



Boggabri Coal ASCF Meeting 18th November 2014

NAME	REPRESENTING
Christine Smith	Chief L.A.C. Member Interestee Party
Betty Gordon	Deck Talbot
Deck Talbot	Deck Talbot
Ken Gordon	Deck Talbot.
WAYNE MATTHEWS	
CYRIL SAMPSON	CYRIL SAMPSON PTY LTD.
Shane Vimech.	
Marianne Talbot	
Natasha Talbot	Wungali
Wayne Matthews	
JAMES THOMAS	
GRAHAM CRIFTHS	STEEL BARRIE
DESLEE MATTHEWS	D.T.C.

Meeting Minutes 15/04/2015

OVERVIEW	
Meeting	Aboriginal Stakeholder Communitiy Forum
Date	15 April 2015 Time 10.00am
Venue	Gunnedah PCYC, View St Gunnedah
Chairperson	Hamish Russell
Attendees	As per sign on sheet plus Daniel Martin, Jan Green, Angela Besant , Lynne MacKellar
Apologies	Gwen Griffen
Guests	
Next Meeting	TBA

MEETING OBJECTIVES	
1	To provide an avenue for continued consultation on an ongoing regular basis and provide a forum for raising issues by stakeholders or Boggabri Coal.
2	Discuss agenda items.
3	
4	
5	
6	

ITEM	AGENDA/DISCUSSION ITEMS
1.	Welcome to Country – Cyril Sampson (CS)
2.	Introductions – Hamish Russell (HR), Dr Jan Green (JG), Angela Besant (AB), Daniel Martin (DM) and Lynne MacKellar (LM).
3.	Meeting Rules – HR discussed meeting rules.
4.	Review previous ASCF minutes - Hamish Russell(HR) discussed previous minutes.
5.	Selection of meeting venue - Hamish Russell (HR) PCYC was chosen because attendance numbers were down for meetings held at the Red Chief LALC. The increase in RAP attendance today will enable Boggabri Coal to increase the effectiveness of consultation. Thank you to all for your attendance.
6.	Overview of the 2015 Tree Clearing Program – Angela Besant (AB) ran through tree clearing program. James Thomas (JT) asked what the target clearing will be. Hamish Russell (HR) replied that the target is 160 hectares with about 120 hectares cleared to date. Angela Besant (AB) said she is keeping a spread sheet to monitor the hours worked. This will be continued through to next round of tree clearing. All are roughly 25 hours.

	<p>James Thomas (JT) -asked for boundary maps to be supplied. Hamish Russell (HR) replied that all the maps are on our website as well as all copies available at the land council.</p> <p>Angela Besant (AB) - said there have been 218 artefacts found on the surface and 44 found in the subsurface.</p> <p>James Thomas (JT) -asked what has become of thunder eggs.</p> <p>Marjorie Talbott (MT) – commented that there were thunder eggs.</p> <p>Angela Besant (AB) – asked the group if anyone had found any and various replied “not personally”.</p> <p>Angela Besant (AB) – Said the ecologists are now marking with tape all the trees that are even suspected to be a scar tree. This is working well for all concerned.</p> <p>The 2015 tree clearing work has shown that the the most sensitive areas seem to be closer to the drainage lines, and these areas may be better addressed prior to the tree clearing program 2016.</p> <p>Greg Griffiths (GG) – how are the trees reviewed and who decides if they are a scar tree.</p> <p>Angela Besant (AB) – Trees are reviewed by the archaeologist and discussed with the RAPs present. Where there is uncertainty the next roster group also inspect the tree and their opinion sought.</p>
7.	<p>CCC Recruitment – Hamish Russell (HR) – We are required to have a CCC recruitment program so that we have representatives at meetings to provide contact with the community. Ads have been placed in this week’s editions of the Namoi Valley Independent and North West Courier. Applications close 30th April 2015.</p>
8.	<p>Scar Tree Management – Hamish Russell (HR) – We have 5 scar trees – 3 in the core shed and 2 still in situ. Intentions are to relocate in the short term to a suitable area, possibly in the rehab area or the biodiversity area.</p> <p>Cindy Foley (CF) – said they can’t go back because they will deteriorate in the weather.</p> <p>Hamish Russell (HR) – said that is what was previously requested by former senior RAPs.</p> <p>Michael Long (ML) - said they need to be preserved, in a location accessible for children to learn about their culture.</p> <p>Cindy Foley (CF) wants to table that at the previous time when a keeping place was offered, there was conflict between RAPs and it was declined. Can the scar trees be treated and kept in a building to protect them.</p> <p>Hamish Russell – BC are now going to put a keeping place back on the agenda. How many scar trees do we have to retain?</p> <p>Michael Long (ML) said the keeping place has to be close to country.</p> <p>James Thomas (JT) asked if BC could treat the trees before they were removed.</p> <p>Greg Griffiths (GG) – asked if keeping place artefacts are selected, can the rest of the artefacts be returned to original finding place.</p> <p>Hamish Russell (HR) – We will undertake to preserve the trees and put a keeping place back on the agenda.</p> <p>Angela Besant (AB) – The RAPs are representatives of the people and it is their role to pass on information between the mine and the community.</p> <p>Cyril Sampson (CS) – mentioned a book that has been written containing a lot of cultural information regarding plant resources.</p> <p>Hamish Russell (HR) – Details in the book could be considered for inclusion in the</p>

	<p>management plan.</p> <p>Michael Long (ML) – There is a need for the correct people to be involved in deciding if trees are potentially cultural or not. Not everyone has the correct training amongst the RAPs to decide.</p>
9.	<p>Updating of the CHMP –</p> <p>Angela Besant (AB) – It is now time to update the CHMP as the mine has progressed from the construction phase to the operational phase. This update will require a review of our processes and methodologies.</p> <p>Cindy Foley (CF) - can we add that we need to salvage a certain type of tree to the CHMP?</p> <p>Greg Griffiths (GG) - Cultural heritage values- can they be taken into consideration in the CHMP.</p> <p>Hamish Russell (HR) - yes we have an obligation to do that and now is the time to come up with these processes and procedures.</p> <p>Cindy Foley (CF) – Asked that RAPs be involved in replanting and revegetation.</p> <p>Dick Talbott (DT) - Commented that not all mine approvals list all endangered species and that we don't know which plants are endangered and we should consult with them.</p> <p>Hamish Russell (HR) - We have flora and fauna assessments done and we will consider the use of RAPs to undertake tree planting and fencing works.</p>
10.	<p>Approval and Modification 4 and the Proposed Modification 5 - The Mod 4 of the project approval has been approved.</p> <p>Modification 5 is under development. This Mod proposes to install groundwater bores. The bore plan is similar to that included in the draft Mod 4 and then removed from that Mod. The bore plan has been discussed at a special meeting (16/10/2014) and the November ASCF. Once finalised the current bore plan and Mod 5 report will be circulated to RAPs as a draft for comment.</p>
11.	<p>Mine Operations Plan 2015-2019 – The plan for the next 5 years includes – amount of disturbance by the progression of the pit, and rehabilitation.</p> <p>Cindy Foley (CF) requested a copy of the plan.</p> <p>Hamish Russell (HR) – All the plans can be found on our website as well as at the land council.</p>
12.	<p>Artefact Display – A time and location for the proposed artefact display was requested and the preferred option was to be in school holidays. No location was agreed however it was discussed the last one was successfully held at the PCYC.</p> <p>Greg Griffiths (GG) – asked if they can have supporting documentation that the RAPs have participated in the collection of the artefacts.</p>
13.	<p>AHIMs listings on Boggabri Coal owned land – Hamish Russell (HR) – Requested that Boggabri Coal be told about any sites that have been or are being registered as a courtesy as there is the possibility they could be missed as we are only obliged to check the register once every 12 months.</p> <p>Cindy Foley (CF) – Requested that any RAPs coming to site should only be Kamilaroi people.</p> <p>Angela Besant (AB) – We are not in the position to decide who is off country, that is a matter for the community. Under the CHMP we have a minimum of 2 RAPs in the field so it is unlikely that a person from off country is making decisions in isolation. The average is 6 RAPs.</p> <p>Greg Griffiths (GG) – Anyone can register a site with AHIMs and was worried if some listings miss representing their culture as once it is registered it does not come off. It is</p>

	also possible to register any doubts with any registered site.
14.	Environmental monitoring - numerous environmental aspects are monitored regularly. No exceedences have been experienced recently.
15.	Biodiversity Offset Property – (HR) Approvals are available online. Cindy Foley (CF) requested if RAPs are involved with the choosing of the Biodiversity Offset Property and wants to sit down with the ecologists and let them know what to look for when choosing land. Jan Green (JG) – Ecologists look for habitat land as well as land with critically endangered species.
16.	Other Business – Leeann Foley (LF) asked who pays for the medicals needed for induction. (HR) Payment for medicals is to be covered by RAPs. Natasha Talbott (NT) asked what is happening with random drug testing. Hamish Russell (HR) replied it's random. Angela Besant (AB) – Next week is split roster and the country to be checked is very rough. It is proposed that this roster not be used and instead use the 3 people with the least hours to inspect the area, as a single vehicle is enough for the scale of the job.

Boggabri Coal ASCF Meeting 15th April 2015

NAME	REPRESENTING
MICHAEL LONG	WHITELOCKRATOO
Aaron Talbott	ATC/MILAROI CC
Pedro Sampson	CANTON CC
SONNY FITZROY	A & A Roofing
GAVIN CAMERON	LES Field cm
Lloyd MATTHEWS	Bullem Bullem
JAMES THOMAS	J. Thomas
Daniel Martin	
Hamish Rinea	
GARY CAMPBELL	
NATASHA TALBOTT	W & Talbott
Shaun Davis	SOON
GLORIA FOLEY	Stolz
BRIAN DRAPER	Brian Draper
Leeann FOLEY	TNL SITE TRACKERS
MARJORIE TALBOTT	Marjorie Talbott
CYRIL SAMPSON	Beryl Sampson
Lindy Foley	C. Foley
Tyler Sauer	