

**Appendix S**  
***Heritage Impact Assessment***



INSITE HERITAGE

- PTY LTD  
PO Box 198  
Morisset NSW 2268  
admin@insiteheritage.com.au  
P 0412836031  
ABN 70 110 716 080

## **Heritage Impact Assessment**

### **Boggabri Coal Mine - Modification 8**

Report to

Hansen Bailey

November 2020

## Contents

1. Introduction .....	3
2. Legislative Context .....	3
3. The Assessment Objectives .....	4
4. Historical Context .....	6
5. Background Research.....	7
6. Assessment Results.....	8
7. Recommendations .....	8
<b>References</b> .....	<b>8</b>

## 1. Introduction

Insite Heritage Pty Ltd were commissioned by Hansen Bailey Pty Ltd to provide a Historic Heritage Impact Assessment for the proposed Modification 8 (MOD8) to SSD 09\_0182 at the Boggabri Coal Mine (BCM).

The MOD 8 would facilitate the following:

- Increasing the approved depth of mining to the Templemore Coal Seam to recover an additional 61.6 Million tonnes (Mt) of ROM coal within the current approved mine disturbance boundary.
- Construction of a specifically designed fauna movement crossing of the existing haul road between the mining area and the MIA. The fauna crossing will encourage the movement of fauna through the southern rehabilitation area (SRA).
- Additional workforce for peak operations.
- Continue mining operations for a further six years to 2039 and amend the Conceptual Final Landform design whilst maintaining the rehabilitation objectives of the Approval.
- The mining methods and equipment types used at BCM will remain the same.

The BCM Cultural Heritage Management Plan (CHMP) which details the management of cultural heritage within the approved Project Boundary and prescribes the management of activities on BCMs biodiversity offset properties. The CHMP (Section 4.1) states that a Due Diligence assessment is triggered where a previously unassessed activity is proposed under a Project Approval Modification.

Whilst the proposed changes to mining operations will remain entirely within the currently approved mine disturbance boundary, the fauna movement crossing (and associated infrastructure) will result in some minor additional ground disturbance outside the approved disturbance area, on the western side of the existing haul road. This additional disturbance remains entirely within the approved Project Boundary which was the subject of a heritage assessment within the 2010 Boggabri Continued Operations Project Environmental Assessment (Boggabri EA) and the area applicable to the CHMP.

For assessment purposes, a Survey Area of 110 ha to the western side of the existing mining operations within the approved Project Boundary was identified. A smaller polygon of 3.3 ha (MOD 8 Disturbance Footprint) was identified as the most suitable location for the additional disturbance which is likely to be required for the construction of the fauna crossing. It is expected that only 1.2 ha of disturbance will be required within the MOD 8 Disturbance Footprint, the location of which will be determined during the detailed engineering design of the fauna crossing and with consideration of other identified environmental constraints (Figure 1).

## 2. Legislative Context

Heritage items and deposits are protected in NSW under the *Heritage Act 1977*. The Act objectives are:

- a) To promote and understanding of the State's heritage,
- b) To encourage the conservation of the State's heritage,
- c) To provide for the identification and registration of items of State heritage significance,
- d) To provide for the interim protection of items of State heritage significance,
- e) To encourage the adaptive reuse of items of State heritage,
- f) To constitute the Heritage Council of NSW and confer on it functions relating to the State's heritage,
- g) To assist owners with the conservation of items of State heritage significance.

Section 139 of the *Heritage ACT* requires an excavation permit in certain circumstances;

- 1) A person must not disturb or excavate any land knowing or having reasonable cause to suspect that the disturbance or excavation will or is likely to result in a relic being discovered, exposed, moved, damaged or destroyed unless the disturbance or excavation is carried out in accordance with an excavation permit.

- 2) A person must not disturb or excavate any land on which the person has discovered or exposed a relic except in accordance with an excavation permit<sup>1</sup>.

Breaches of the Act are liable for penalties not exceeding 10,000 penalty units or six months imprisonment.

### **3. The Assessment Objectives**

The objectives of the Historic Heritage Impact Assessment were to review the known historic cultural sites within the 110ha MOD 8 Survey Area and to identify any previously unrecorded sites exposed in the time interval since the area was previously inspected.

A desktop review of available heritage databases was initially reviewed to identify the presence of known historic cultural sites within the MOD 8 Survey Area.

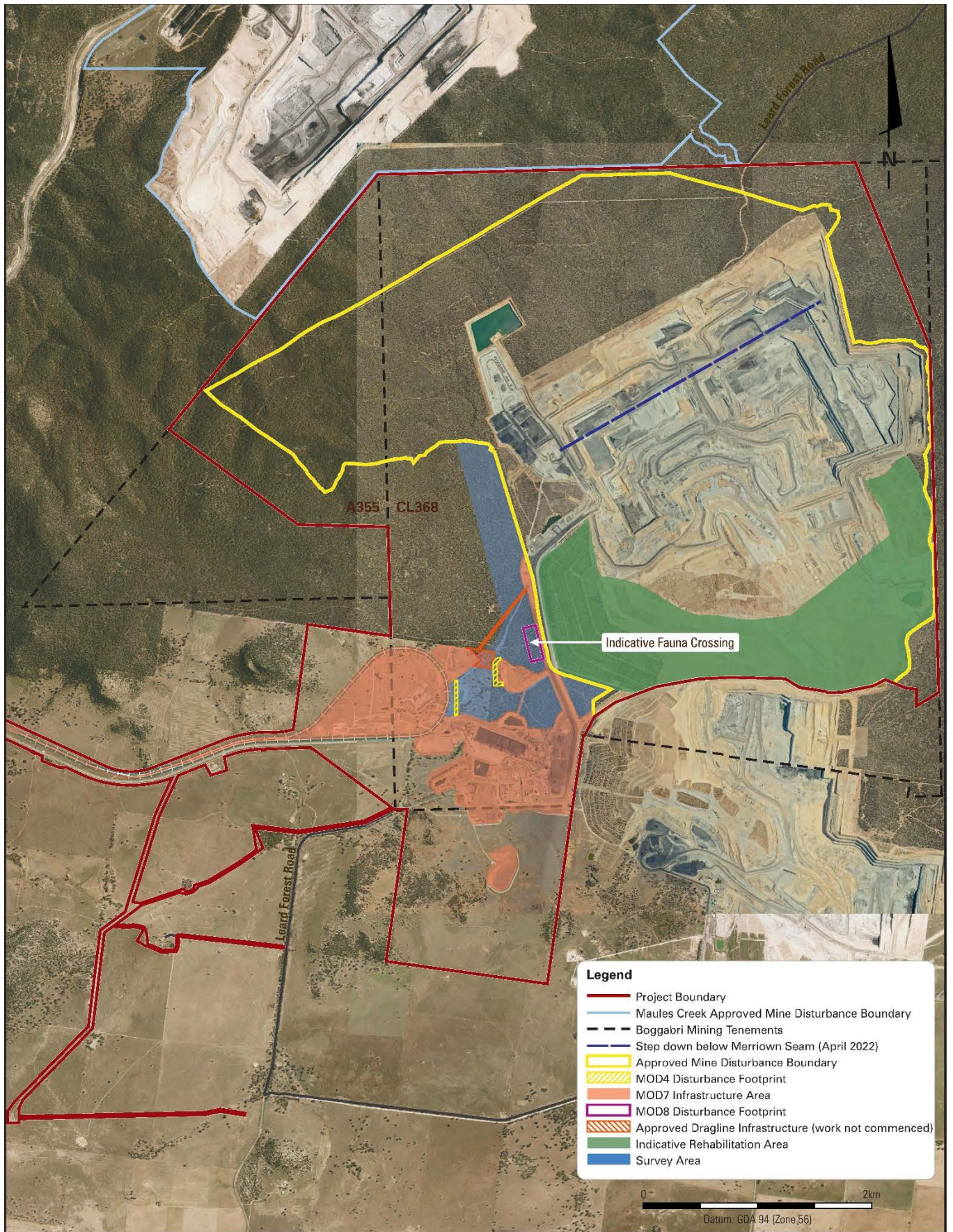
The MOD 8 Survey Area was then divided into polygons for the purposes of the field assessment. Polygon 4 represents the MOD 8 Disturbance Footprint which is the area within which the proposed disturbance (i.e. only 1.21 ha within the 3.31 ha area) for the fauna crossing will occur (Figure 2).

Field inspection of the MOD 8 Survey Area was carried out concurrently with the Aboriginal cultural heritage survey on the 28<sup>th</sup> and 29<sup>th</sup> September, 2020.

---

<sup>1</sup> <https://www.legislation.nsw.gov.au/view/html/inforce/current/act-1977-136#sec.139>





BOGGABRI COAL MINE

MOD 8 Conceptual Project Layout



Figure 1 Mod 8 Conceptual layout courtesy of Hansen Bailey



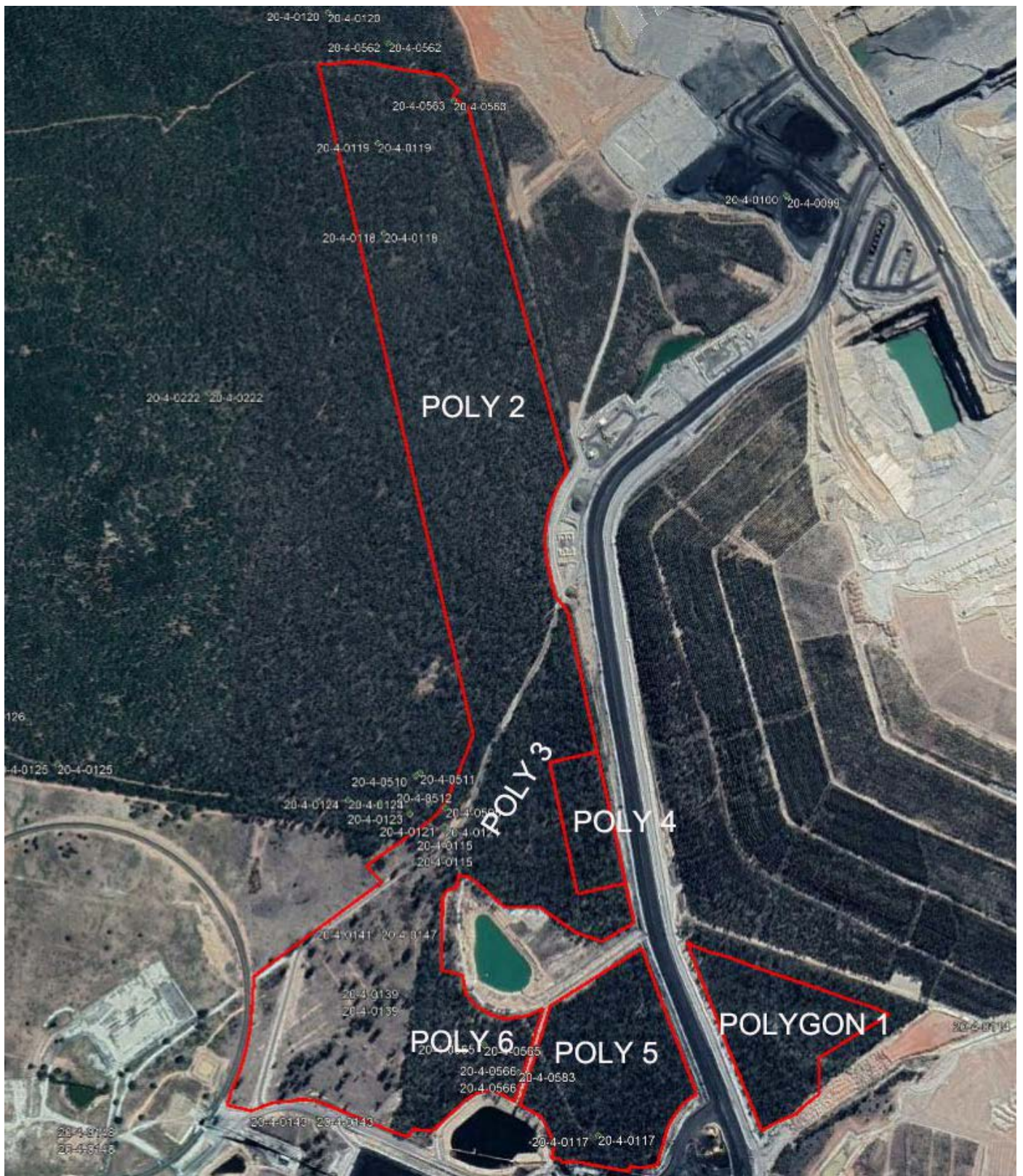


Figure 2 MOD 8 Survey Area divided into assessment Polygons.

#### 4. Historical Context

The MOD 8 Survey Area is located within the Leard State Forest, which was dedicated as a forest reserve in 1878 (as Back Creek Forest Reserve) <sup>2</sup>. The quality of the native pine and ironbark forest were not of sufficient quality or quantity to attract large timber industry operations. The Willowdale Mill operated for

<sup>2</sup> Archaeology Australia 2009 *Continuation of Boggabri Coal Mine Non-Aboriginal Heritage Assessment*. Report to Hansen Bailey

some years in the general area (location unknown) and locals cut timber in the State Forest to supplement their income<sup>3</sup>.

Leard State Forest now contains three coal mines, BCM, Tarrawonga Coal Mine and Maules Creek Coal Mine. Areas of the original Leard State Forest have been conserved in the Leard State Conservation Area to the west of the Maules Creek Coal Mine.

## 5. Background Research.

In order to identify potential historic cultural items a search was conducted of the *Narrabri Local Environment Plan 2012* (LEP) and the NSW Heritage Office Heritage Inventory of items of State and Local significance.

There are no items of heritage significance identified in the CHMP within the Leard State Forest portion of the BCM Project Boundary.

### Narrabri LGA

A search of the Narrabri LEP found the following items listed in the Boggabri area<sup>4</sup> and are listed in Table 1.

**Table 1 Narrabri LEP Heritage Items for the Boggabri Area.**

Suburb	Item Name	Address	Lot / DP	Level of Significance	Reference Number
Boggabri	War Memorial	77 Brent Street	Lots 1–3, Section 41, DP 758128	Local	I039
Boggabri	General Cemetery	69 Denman Street	Lot 7017, DP 1028506; Lots 1–5, DP 724168	Local	I037
Boggabri	Iron Bridge	14224 Kamilaroi Highway	Lot 7003, DP 1050545	Local	I017
Boggabri	Boggabri Railway Station	90 Oakham Street	Railway land	Local	I038

### NSW Heritage Register

The Heritage NSW Heritage Inventory for items listed by Local Government and State Government in the Boggabri area are listed in Table 2<sup>5</sup>.

**Table 2 Heritage NSW Heritage Inventory for the Boggabri Area.**

Item name	Address	Suburb	LGA	Information source
Boggabri Railway Station	90 Oakham Street	Boggabri	Narrabri	LGOV
Boggabri Railway Station	Oakham Street	Boggabri	Narrabri	SGOV
Iron Bridge	14224 Kamilaroi Highway	Boggabri	Narrabri	LGOV
Iron Bridge over Namoi River near Boggabri	Regional Road 357	Boggabri	Narrabri	SGOV
War Memorial	77 Brent Street	Boggabri	Narrabri	LGOV

The background review did not identify any potential heritage items within the MOD 8 Survey Area or the MOD 8 Disturbance Footprint.

<sup>3</sup> Ibid.

<sup>4</sup> <https://www.legislation.nsw.gov.au/view/html/inforce/current/epi-2012-0636#sch.5>



## 6. Assessment Results.

The desktop assessment and field inspection did not locate any items or areas of historic cultural items. Historical cultural sites and 'relics' are defined by NSW Heritage Guidelines.

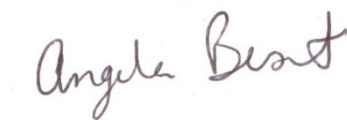
Section 4(1) of the *Heritage Act 1977* (as amended in 2009) defines 'relic' as any deposit, artefact, object or material evidence that:

- (a) Relates to the settlement of the area that comprises NSW, not being Aboriginal settlement and
- (b) Is of State or local heritage significance.

No items of local or State significance were located during the field inspection. Within the MOD 8 Disturbance Footprint (Polygon 4), no potential heritage items were located. Therefore MOD 8 will not result in impacts to any items of historic cultural heritage value

## 7. Recommendations

There are no historical archaeological constraints to the construction of the fauna crossing. In general, there are no historic heritage constraints within the MOD 8 Disturbance Footprint.



**Archaeologist**  
**Insite Heritage Pty Ltd**

## References

- Archaeology Australia 2009 Continuation of Boggabri coal Mine. Non-Aboriginal cultural Heritage Assessment. Report to Hansen Bailey Pty Ltd
- Australia ICOMOS 1999 *The Burra Charter* The Australia ICOMOSW Charter for Places of Cultural Significance. The International Council of Monuments and Sites.
- Insite Heritage 2016 Boggabri Coal Part 3A Cultural Heritage Management Plan (CHMP) version 7. Report to Boggabri Coal
- NSW Heritage 2009 Assessing Significance for Sites and "Relics"  
<https://www.heritage.nsw.gov.au/assets/Uploads/a-z-publications/a-c/Assessing-Significance-A-Historical-Archaeological-Sites-and-Relics.pdf>