



E 302 000

E 304 000

E 306 000

E 308 000

N 6 434 000

N 6 434 000

N 6 432 000

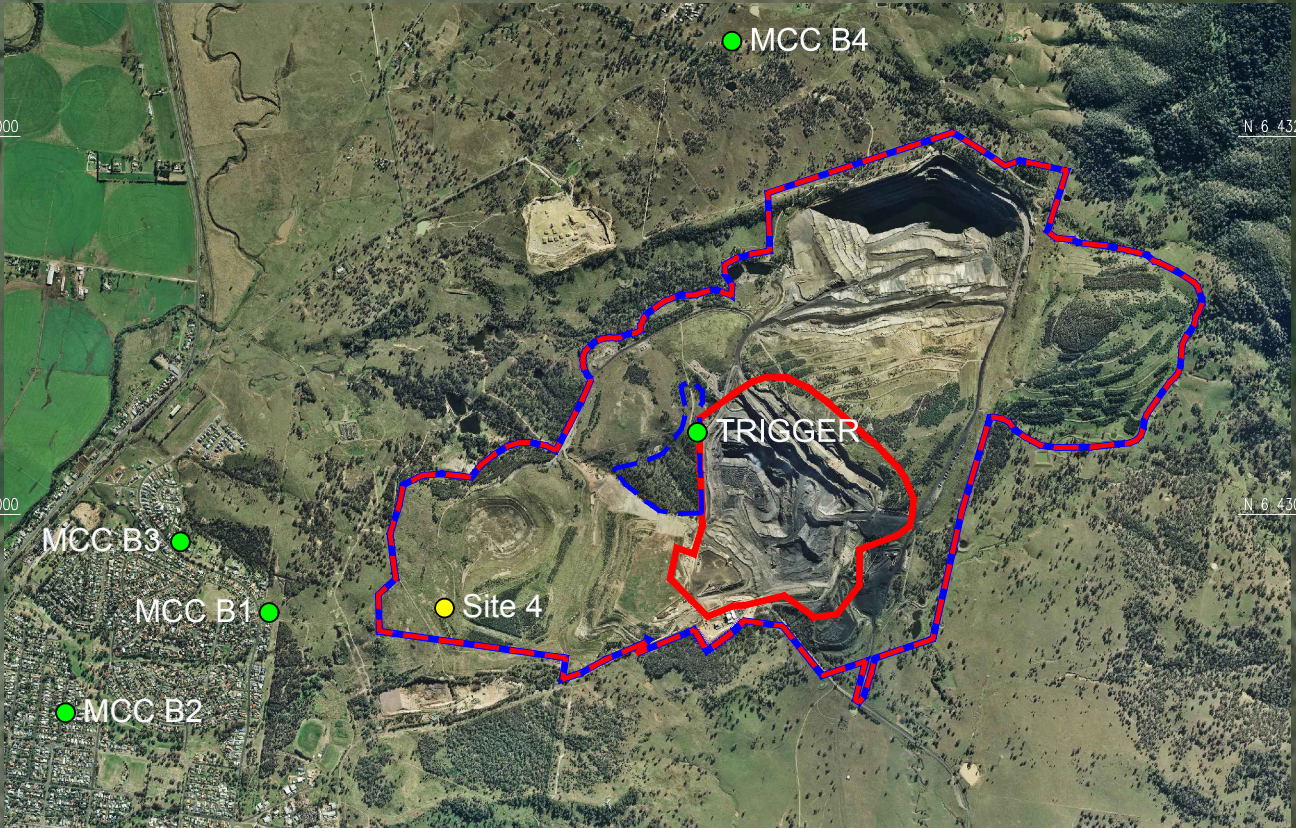
N 6 432 000

N 6 430 000

N 6 430 000

N 6 428 000

N 6 428 000



N 6 428 000

N 6 428 000

**LEGEND**

- Mine Approval Boundary
- Disturbance Boundary
- Disturbance Exclusion Boundary
- Proposed Extraction Boundary
- Blast Monitoring Location
- Meteorological Station

N 6 426 000

E 306 000

E 308 000

REV.	DATE	BY	DESCRIPTION	CHK.
A	14.05.2015	TB	Issued Drawing	
B	27.08.2015	TB	Update Trigger Unit location	



1/104 George Street  
Singleton, NSW, 2330  
Website: [www.sdresources.com.au](http://www.sdresources.com.au)

**MUSWELLBROOK COAL COMPANY**

**Blasting Management Plan**

Date 27.08.2015	Scale: 1:40,000	Drawn TB	Checked JT	Approved JT	Job J000293
					Dwg No. 09844
					Rev. B
					Sheet A4