

Merriown Seam Layout
 0m 100m 200m 300m 400m 500m

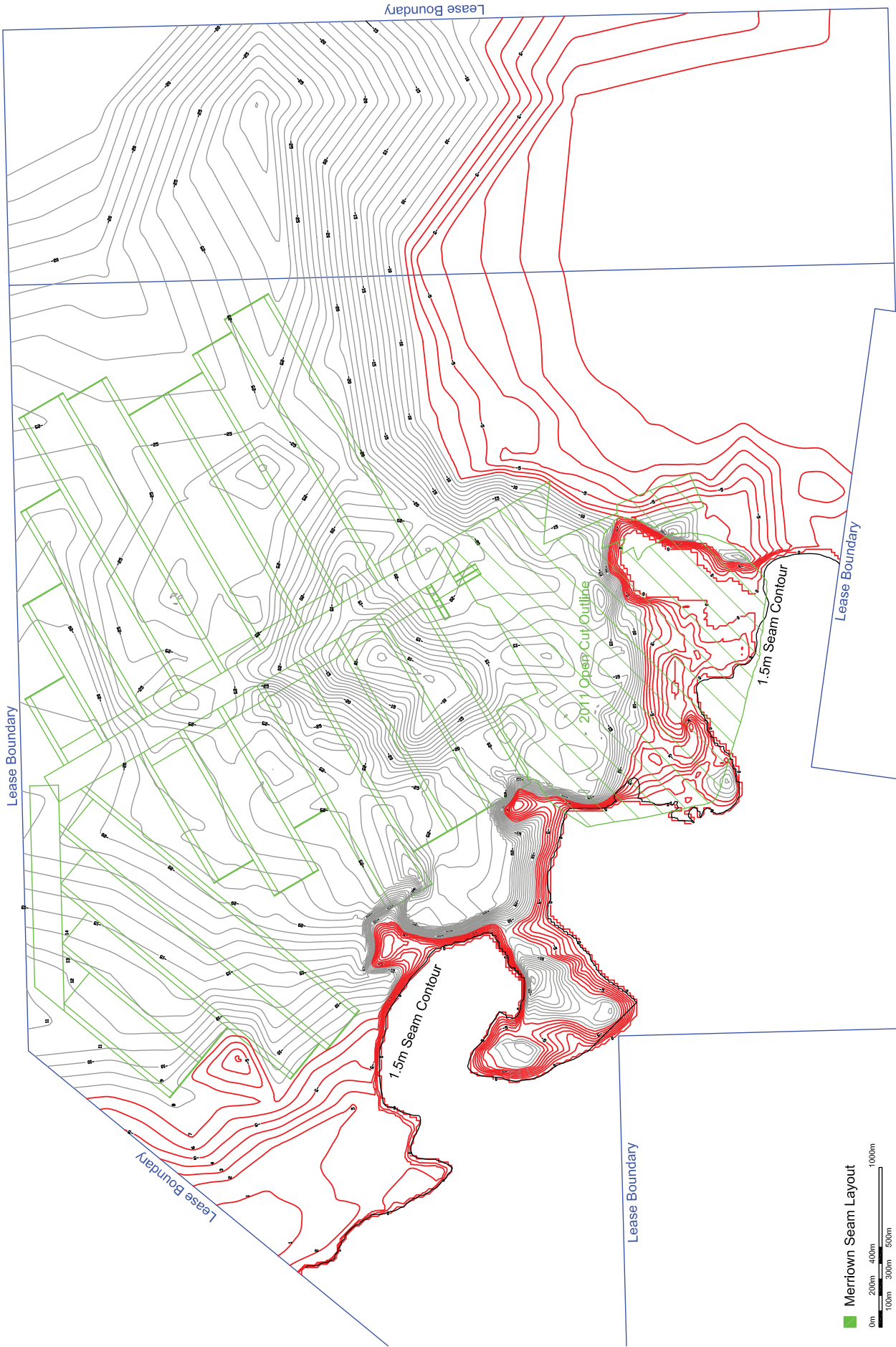
REV	DATE	ISSUED FOR MINE STUDY	KMF	DB	DB
A	23/10/09	ISSUED FOR MINE STUDY			
CAD FILE TYPE	AUTOCAD/ALTOCAD LT				
CAD FILE NAME	4.13.MERRIOWN - COMPOSITE SEAM THICKNESS CONTOURS.DWG				





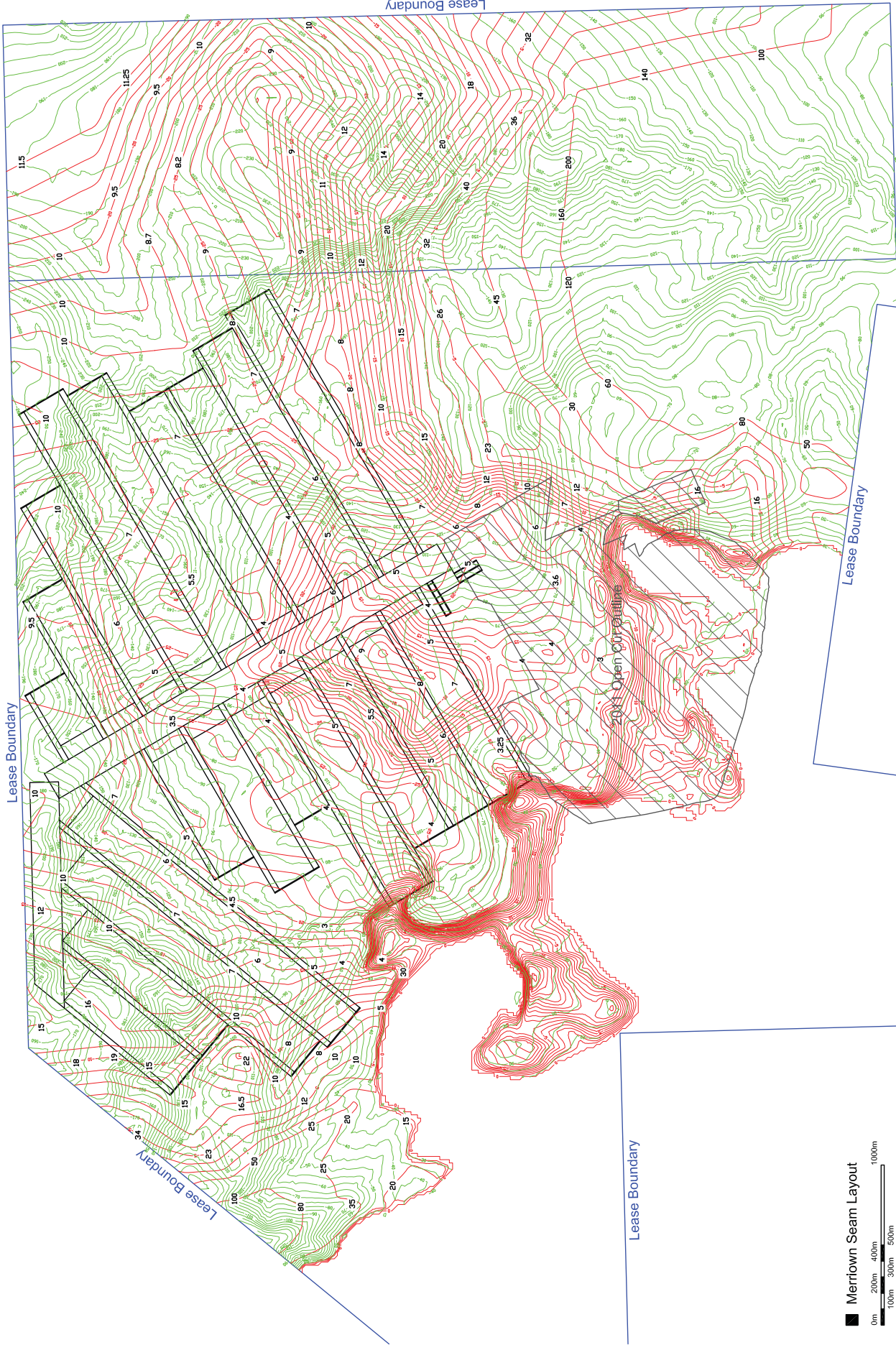
wds
 WDS Consulting
 ABN 65 121 517 889
 Level 1, 628 Coronation Drive
 Toowoong QLD 4066
 Po Box 1374, Toowoong QLD 4066
 Ph: +61 7 3876 0034
 Fx: +61 7 3876 0038
 www.wdsintec.com.au

DESIGNED	DB	08/10/09	REFERENCE DRAWINGS	DRG. No.
DRAWN	DB	08/10/09		
CHECKED				
APPROVED				
SCALE	N/S			
VENDOR				
DRG. No.				

IDEMITSU				
BOGGABRI UNDERGROUND CONCEPT				
MERRIOWN LONGWALL OPTION				
COMPOSITE SEAM THICKNESS CONTOURS				
ORIGINAL DRAWING SIZE	A1	DRAWING No.:	4.13	REVISION A



 <p>WDS Consulting ABN 65 121 517 889 Level 1, 628 Coronation Drive Toowoong QLD 4066 Po Box 1374, Toowoong QLD 4066 Ph: +61 7 3876 0034 Fx: +61 7 3876 0038 www.wdsintec.com.au</p>				DESIGNED DB 08:10:09 DRAWN DB 08:10:09 CHECKED APPROVED SCALE NIS VENDOR DRG. No.		ORIGINAL DRAWING SIZE A1		DRAWING No.: 4.14		REVISION A	
ISSUED FOR MINE STUDY KMF DB DB REV DATE REVISION BY CKD APPD		CAD FILE NAME AUTOCAD\T0CAD11		REFERENCE DRAWINGS		DRG No.		IDEMITSU BOGGABRI UNDERGROUND CONCEPT MERRIOWN LONGWALL LAYOUT INTERBURDEN TO JERALONG CONTOURS		DRAWING No.: 4.14	

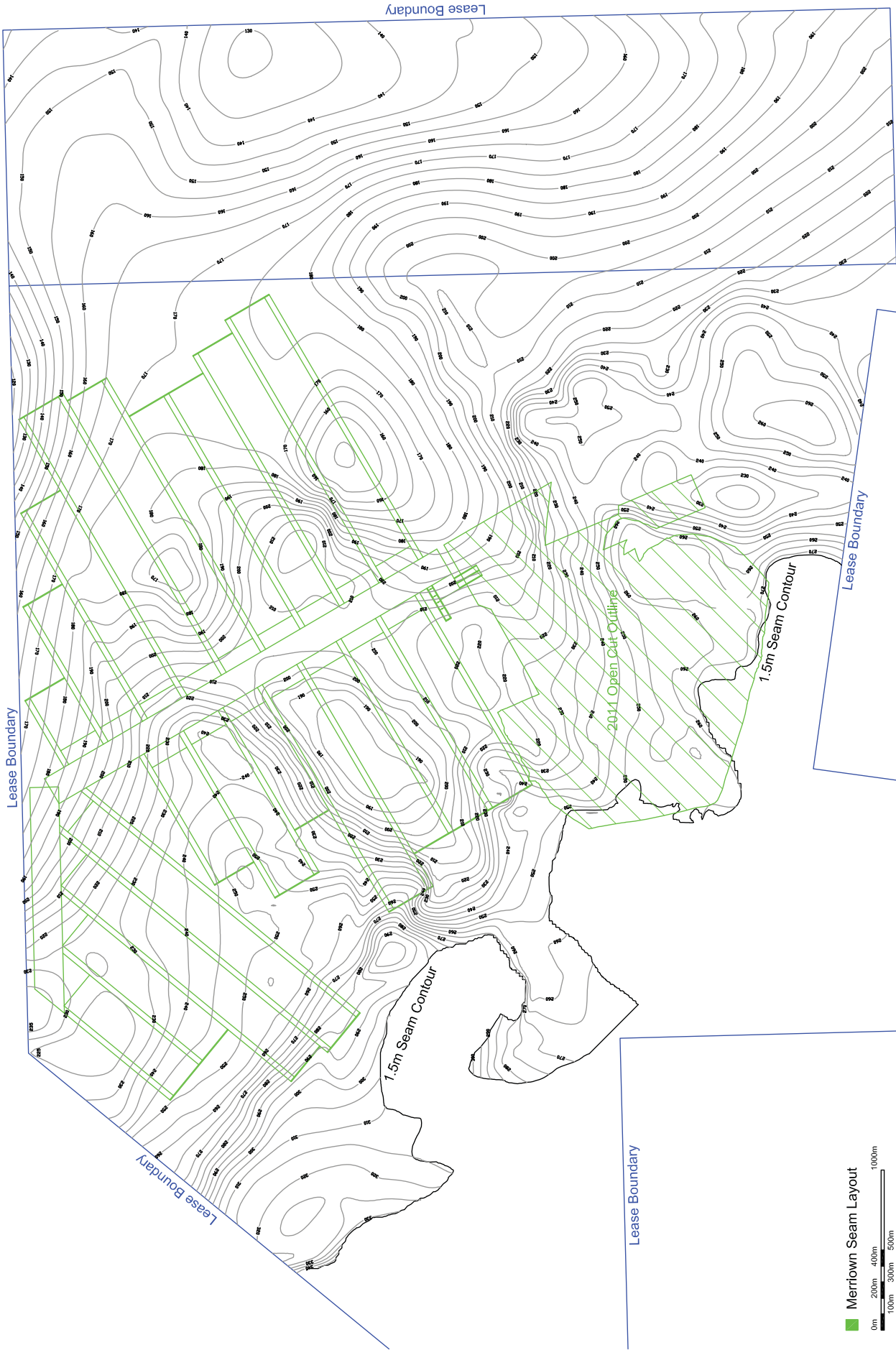




DESIGNED		DB	08:1009	IDEMITSU
DRAWN		DB	08:1009	
CHECKED				BOGGABRI UNDERGROUND CONCEPT
APPROVED				
SCALE		N1S		MERRIOWN LONGWALL OPTION
VENOR				
DRG. No.				OVERBURDEN TO INTERBURDEN RATIO PLAN
ORIGINAL DRAWING SIZE		A1		
REFERENCE DRAWINGS				DRAWING No.:
				4.15
				REVISION A

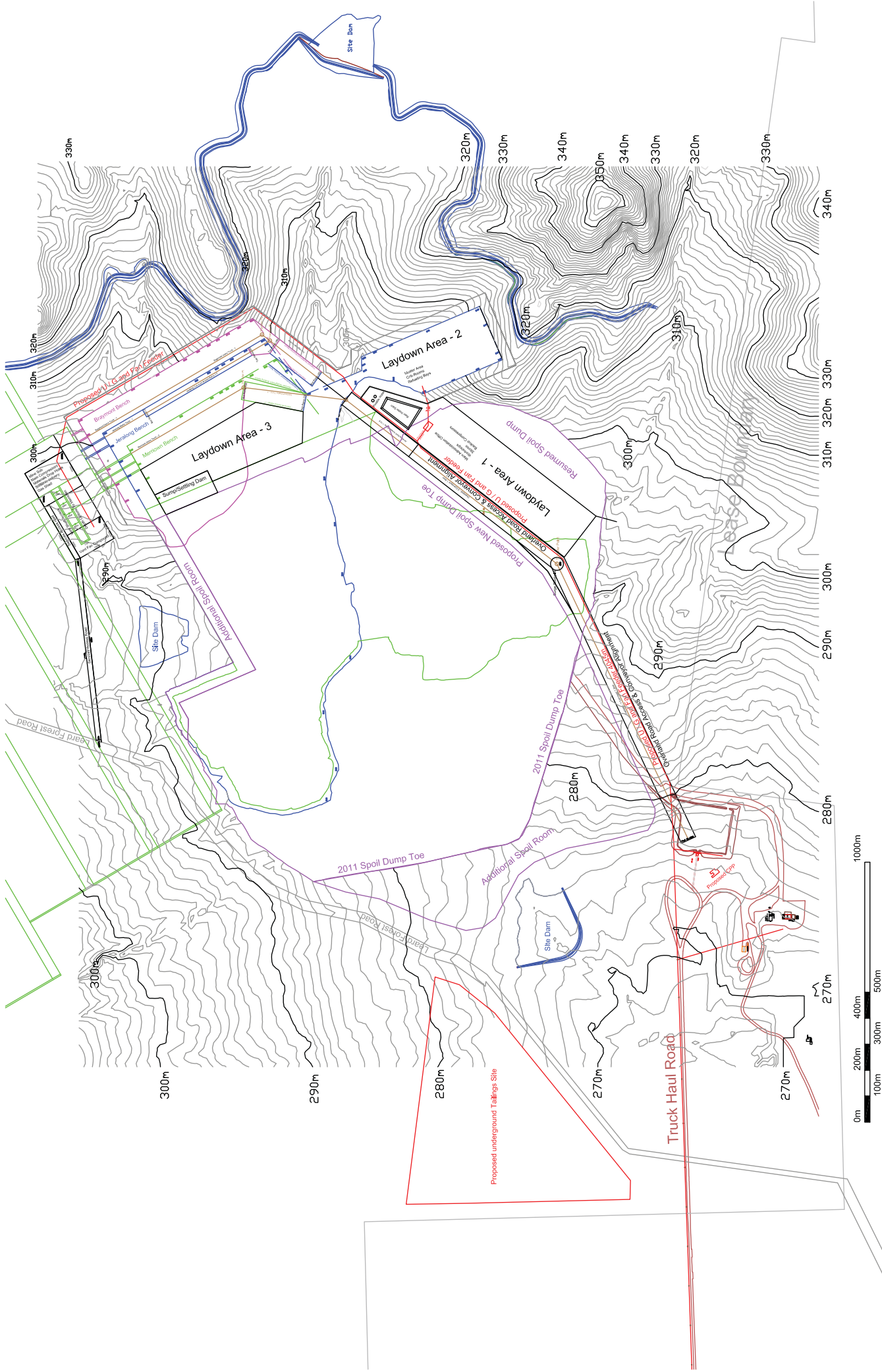
WDS Consulting
 ABN 65 121 517 889
 Level 1, 628 Coronation Drive
 Toowoong QLD 4066
 Po Box 1374, Toowoong QLD 4066
 Ph: +61 7 3876 0034
 Fx: +61 7 3876 0038
 www.wdslimited.com.au


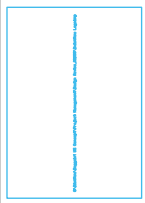


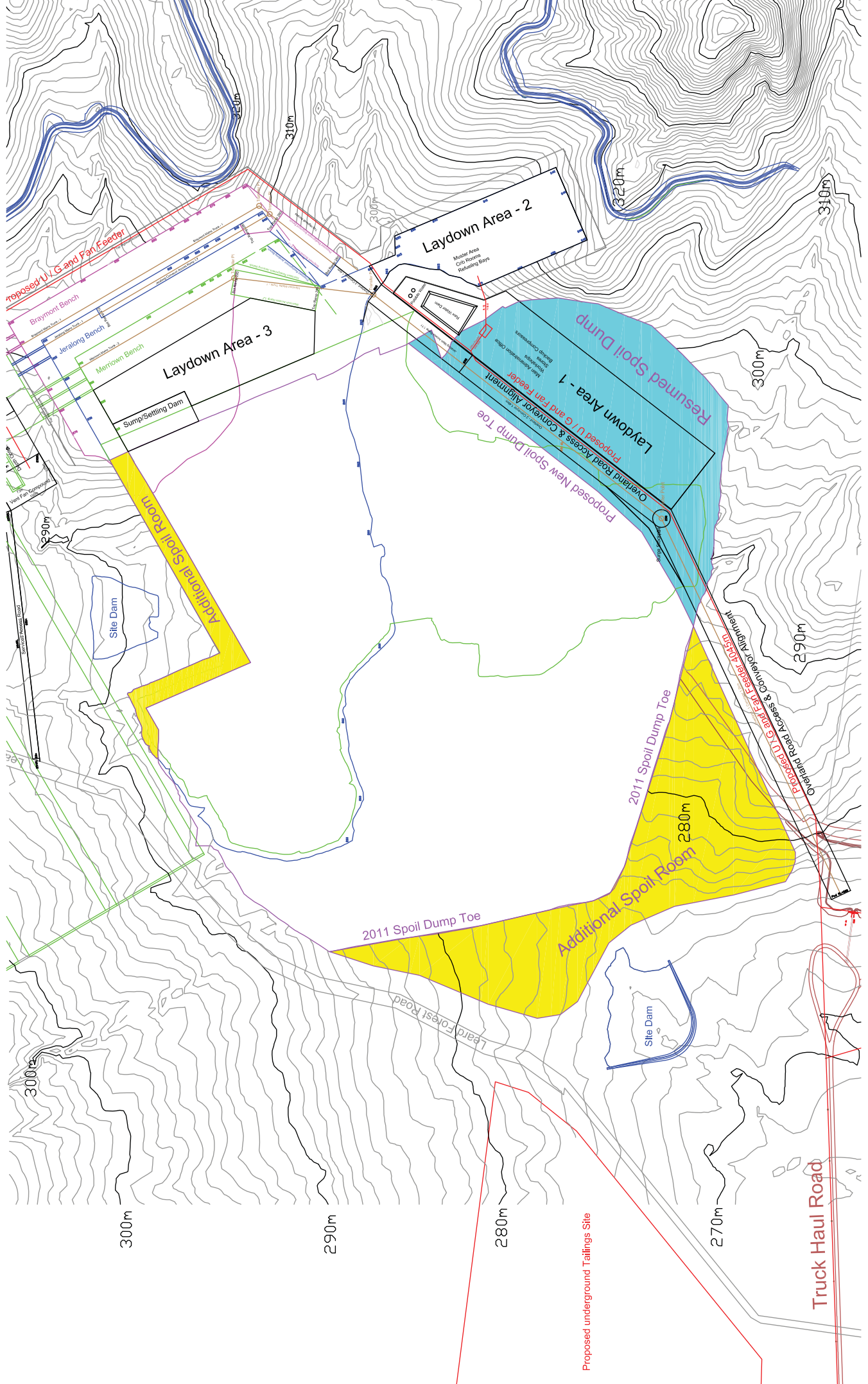
REV	DATE	ISSUED FOR MINE STUDY	BY	CKD/ APPD
A	23/10/09	ISSUED FOR MINE STUDY	KMF	DB
CAD FILE TYPE		AUTOCAD/LT/CAD LT		
CAD FILE NAME		4.15.MERRIOWN-OVERBURDEN-INTERBURDEN-RATIO-PLANDWG		



DESIGNED		DB	08:1009	IDEMITSU	BOGGABRI UNDERGROUND CONCEPT	MERRIOWN LONGWALL OPTION	SEAM FLOOR RL CONTOURS	DRAWING No.: 4.16	REVISION	A
DRAWN		DB	08:1009							
CHECKED										
APPROVED										
SCALE		N1S								
VENDOR										
DRG. No.				ORIGINAL DRAWING SIZE		A1				
REFERENCE DRAWINGS				DRG. No.						
WDS Consulting		ABN 65 121 517 889								
Level 1, 628 Coronation Drive		Toowoomba QLD 4066								
Po Box 1374, Toowoomba QLD 4066		Ph: +61 7 3876 0034								
		F: +61 7 3876 0038								
		www.wdslimited.com.au								
										
REV	DATE	ISSUED FOR	BY	DB	DB	DB	DB			
A	23/10/09	ISSUED FOR MINE STUDY	KMF	DB	DB	DB	DB			
		REVISION	BY	CKD	APPD					
CAD FILE TYPE		AUTOCAD/INTOCAD LT								
CAD FILE NAME		4.16 MERRIOWN - SEAM FLOOR RL CONTOURS.DWG								



WDS Consulting ABN 66 121 517 680 Level 1, 628 Corporation Drive Toowoong QLD 4066 Po Box 1374 Toowoong QLD 4066 Ph: +61 7 3876 0034 Fax: +61 7 3876 0038 www.wdsinfotec.com.au		IDEMITSU BOGGABRI UNDERGROUND CONCEPT UNDERGROUND HIGHWAY ACCESS OVERALL ACCESS STRATEGY LAYOUT	
		DESIGNED DB 08:1009 DRAWN DB 08:1009 CHECKED APPROVED NTS SCALE VENDOR DRG. No. ORIGINAL DRAWING SIZE A1	
		REFERENCE DRAWINGS DRG. No.	
ISSUED FOR MINE STUDY REVISION AUTOCAD/AUTOCAD LT 4:77 OVERALL ACCESS STRATEGY LAYOUT.DWG		DRAWING No: 4.17 REVISION A	
REV DATE CAD FILE TYPE CAD FILE NAME	KMF DB DB BY CKD APPD		



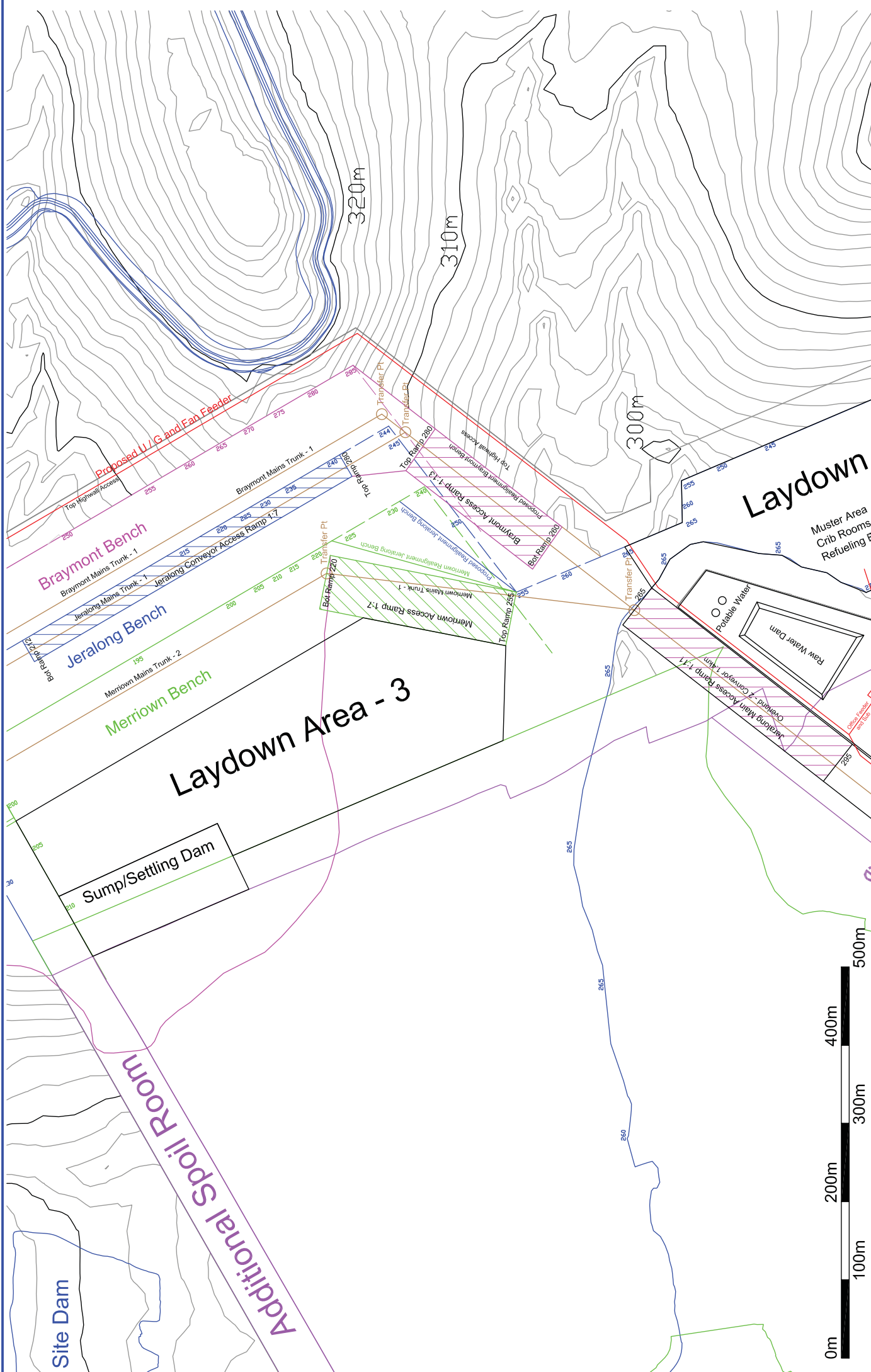
Proposed underground Tailings Site

Truck Haul Road

<p>WDS Consulting ABN 66 121 517 680 Level 1, 628 Corporation Drive Toowoomba QLD 4066 Po Box 1374 Toowoomba QLD 4066 Ph: +61 7 3876 0034 Fax: +61 7 3876 0038 www.wdsmines.com.au</p>		<p>DESIGNED DB 08:1009 DRAWN DB 08:1009 CHECKED APPROVED SCALE NTS VENDOR DRG. No.</p>		<p>ORIGINAL DRAWING SIZE A1</p>		<p>REFERENCE DRAWINGS DRG. No.</p>		<p>DRG. No.</p>	
<p>ISSUED FOR MINE STUDY REVISION DATE CAD FILE TYPE CAD FILE NAME</p>		<p>KMF DB DB BY CKD APPD</p>		<p>4.18 SPOIL DUMP LAYOUT.DWG</p>		<p>4.18</p>		<p>REVISION A</p>	
<p>WDS Consulting Level 1, 628 Corporation Drive Toowoomba QLD 4066 Po Box 1374 Toowoomba QLD 4066 Ph: +61 7 3876 0034 Fax: +61 7 3876 0038 www.wdsmines.com.au</p>									
<p>WDS Consulting Level 1, 628 Corporation Drive Toowoomba QLD 4066 Po Box 1374 Toowoomba QLD 4066 Ph: +61 7 3876 0034 Fax: +61 7 3876 0038 www.wdsmines.com.au</p>									
<p>WDS Consulting Level 1, 628 Corporation Drive Toowoomba QLD 4066 Po Box 1374 Toowoomba QLD 4066 Ph: +61 7 3876 0034 Fax: +61 7 3876 0038 www.wdsmines.com.au</p>									

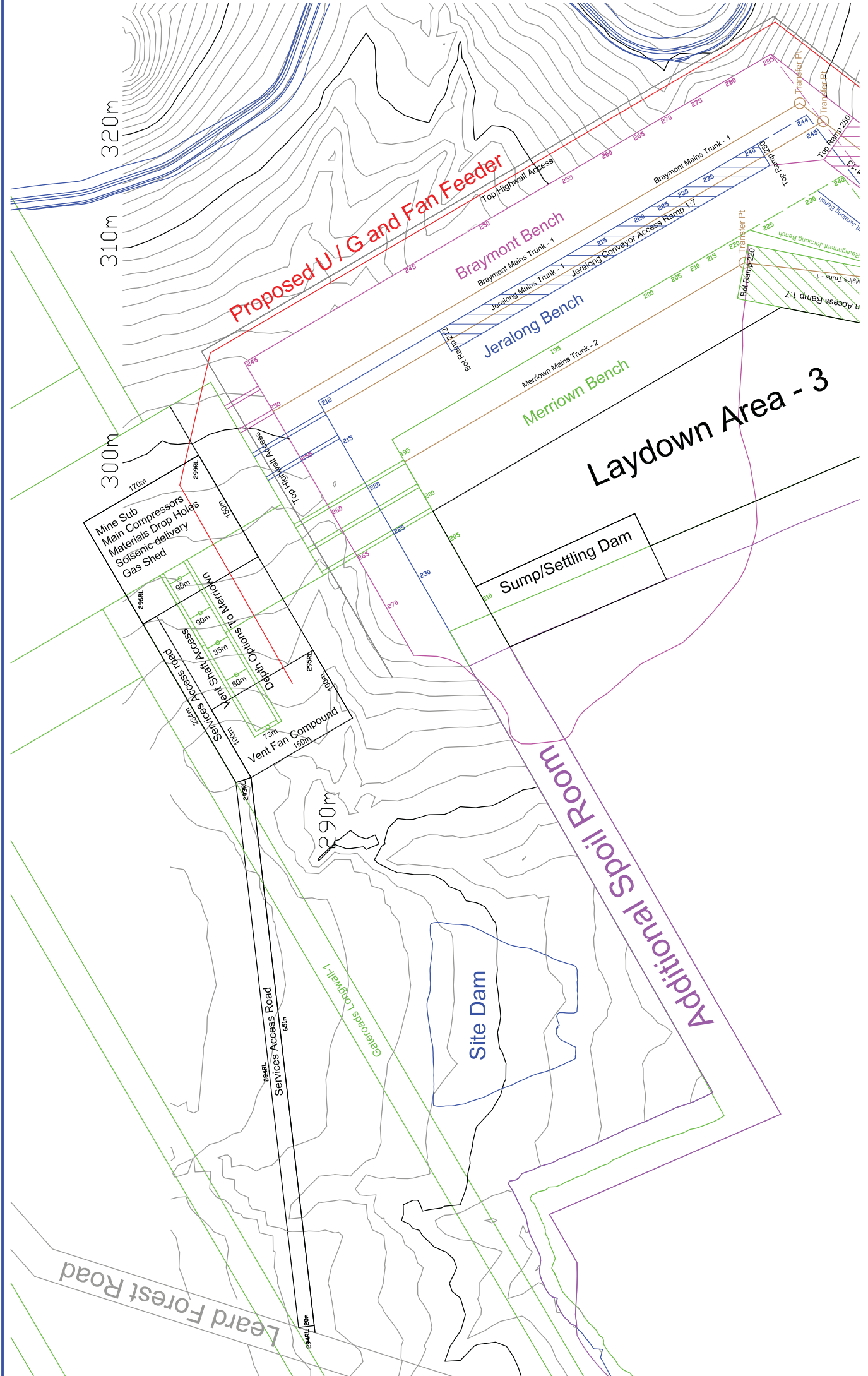


ISSUED FOR MINE STUDY	KMF	DB	DB
REVISION	BY	CKD	APPD
DATE			
CAD FILE TYPE			
CAD FILE NAME			



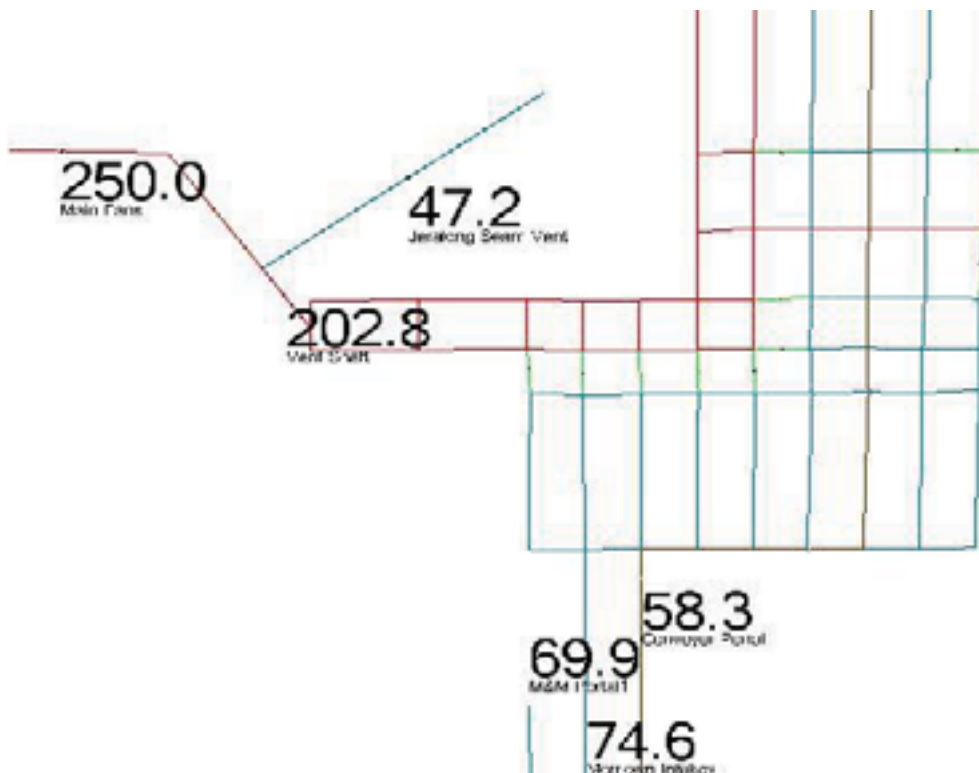
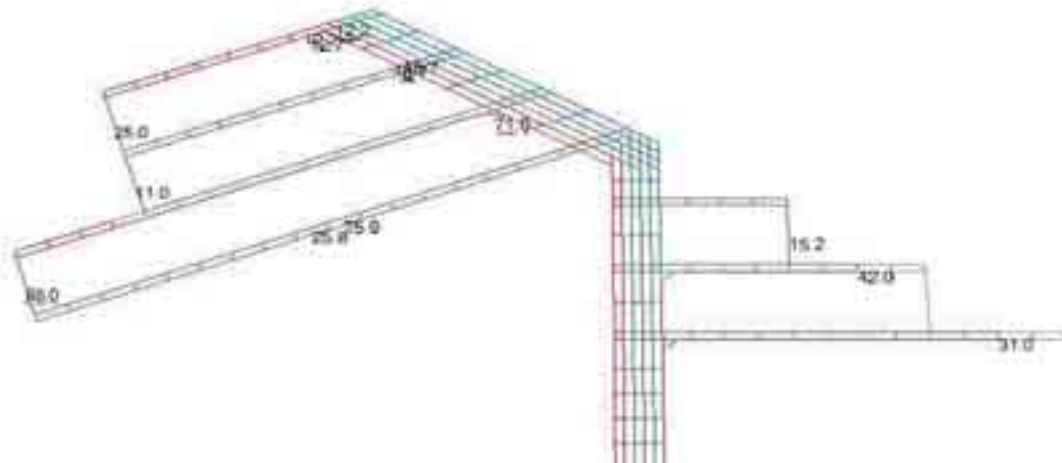
ISSUED FOR MINE STUDY REVISION DATE CAD FILE TYPE CAD FILE NAME		KMF DB DB DB BY CKD/APPD	23:10:50 A	100m 200m 300m 400m 500m	WDS Consulting ABN 66 121 517 880 Level 11, 628 Corporation Drive Toowoomba QLD 4066 Po Box 1374 Toowoomba QLD 4066 PH: +61 7 3878 0034 FX: +61 7 3878 0038 www.wdsmines.com.au	WDS 	WDS Consulting ABN 66 121 517 880 Level 11, 628 Corporation Drive Toowoomba QLD 4066 Po Box 1374 Toowoomba QLD 4066 PH: +61 7 3878 0034 FX: +61 7 3878 0038 www.wdsmines.com.au	REFERENCE DRAWINGS DRG. No.	08:10:09 DB 08:10:09 DB APPROVED NITS SCALE VENDOR DRG. No.	DESIGNED DRAWN CHECKED APPROVED SCALE VENDOR DRG. No.	08:10:09 DB 08:10:09 DB APPROVED NITS SCALE VENDOR DRG. No.	ORIGINAL DRAWING SIZE A1	DRAWING No.: 4.19	REVISION A
--	--	---	---------------	--------------------------------------	--	---------	--	--------------------------------	---	---	---	------------------------------------	--------------------------	----------------------

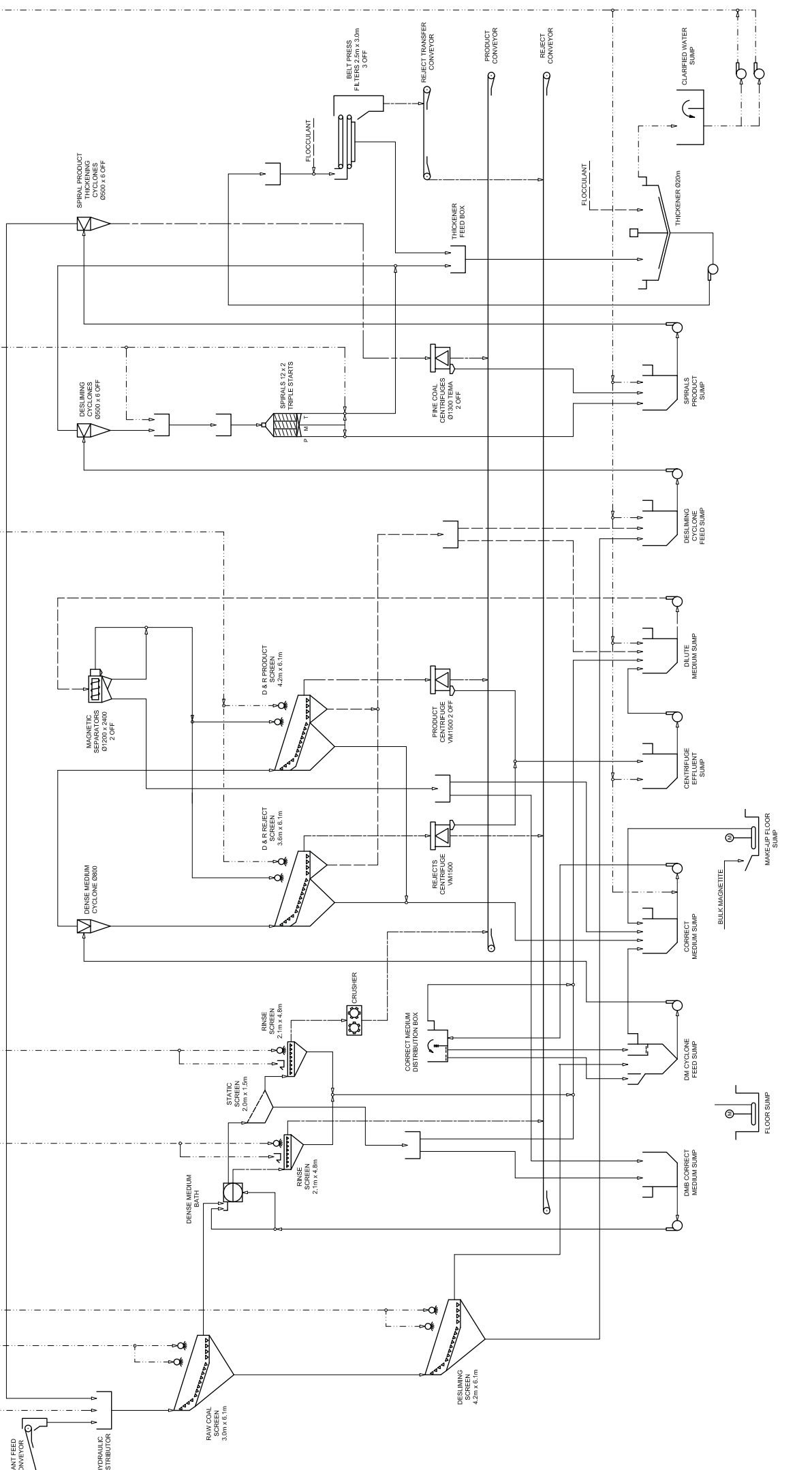
IDEMITSU
BOGGABRI UNDERGROUND CONCEPT
MAIN ACCESS RAMP TO BRAYMONT
JERALONG & MERRIOWN SEAMS



WDS Consulting ABN 66 121 517 880 Level 1, 628 Corporation Drive Toowoomba QLD 4006 Ph: +61 7 3876 0034 Fax: +61 7 3876 0038 www.wdsmines.com.au		WDS 		ISSUED FOR MINE STUDY REVISION BY CKD/APPD AUTOCAD/AUTOCAD LT CAD FILE NAME 4.20 VENT SHAFT OPTIONS.DWG	
DESIGNED	DB	08:1009	08:1009	08:1009	08:1009
DRAWN	DB	08:1009	08:1009	08:1009	08:1009
CHECKED	DB	08:1009	08:1009	08:1009	08:1009
APPROVED	DB	08:1009	08:1009	08:1009	08:1009
SCALE	N1S				
VENDOR	N1S				
DRG. No.	A1				
ORIGINAL DRAWING SIZE	A1				
REFERENCE DRAWINGS	A1				
DRG. No.	A1				
BOGGABRI UNDERGROUND CONCEPT PORTAL ENTRIES AND VENT SHAFT LOCATIONS		IDEMITSU		DRAWING No: 4.20 REVISION: A	

**Figure 4.21 Ventsim Model
(Projected Worst Case – Merriown Seam Level)**





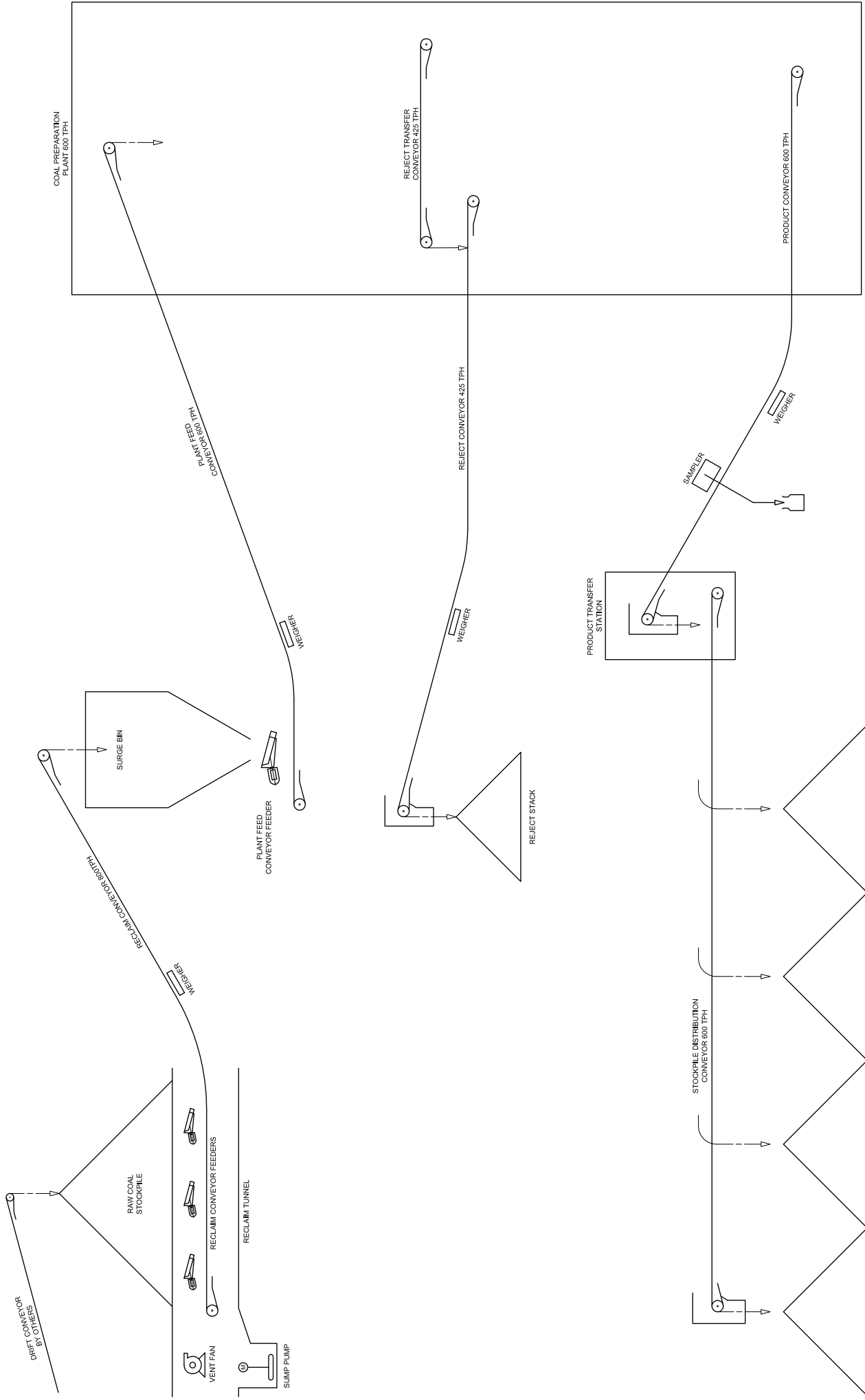
PRELIMINARY IDEMITSU MINING BOGGABRI CONCEPT STUDY 600TPH CPP DMB, DMC AND SPIRALS OVERALL FLOW SHEET - NOMINAL			DESIGNED	PGJ	26/09/09	LOCATION CODES			
			DRAWN	KMF	26/09/09	DISC AREA			
			CHECKED			P	Z	01	
			APPROVED						
SCALE	NTS		VENDOR			ORIGINAL DRAWING SIZE		A1	
CAD FILE TYPE	AUTOCAD/AUTOCAD LT		DRG. NO.			REFERENCE DRAWINGS		DRG. NO.	
CAD FILE NAME	6.1 - DMB, DMC, SPIRALS FLOW SHEET		REVISION				REVISION		A

peataust
PROCESS ENGINEERING AND TECHNOLOGY

336 HAUSMANN ROAD
MOUNT WEE, QLD, AUSTRALIA 4671
PO BOX 1254, WOODFORD, QLD, 4614
PH +61 7 5498 2115
www.peat.net.au

DO NOT SCALE
DIMENSIONS IN MILLIMETRES
DRAFTING STANDARD: AS1100.101 - 1992

A	23/10/09	ISSUED FOR MINE STUDY	KMF	DB	DB
REV	DATE	REVISION	BY	CHK	APPD



© 2009 PEAT (AUST) PTY LTD. THESE PLANS AND THE DESIGNS SHOWN THEREIN REMAIN THE PROPERTY OF PEAT (AUST) PTY LTD. AND MAY NOT BE COPIED IN ANY FORM (INCLUDING THE MANUFACTURE OF ALL OR PART OF THE DESIGNS SHOWN) WITHOUT PRIOR PERMISSION IN WRITING.

REV	DATE	ISSUED FOR	BY	DB	APPD
A	23/10/09	FOR MINE STUDY	KMF	DB	APPD
CAD FILE TYPE		AUTOCAD/AUTOCAD LT			
CAD FILE NAME		6.2 - DMB_DMC_SPIRALS_MATERIALS_HANDLING_FLOW_SHEET.DWG			

DO NOT SCALE
 DIMENSIONS IN MILLIMETRES
 DRAFTING STANDARD: AS1100.101 - 1992

peat
 PROCESS ENGINEERING AND TECHNOLOGY

336 HAUSSMANN ROAD
 MOUNT WEE, QLD, AUSTRALIA 4621
 PO BOX 1254, WOODFORD, QLD, 4614
 PH +61 7 5498 2115
 www.peat.net.au

DESIGNED	PGJ	26/09/09	LOCATION CODES
DRAWN	KMF	26/09/09	DISC AREA ITEM
CHECKED			P Z 01
APPROVED			
SCALE	N1S		
VENDOR DRG. No.			
REFERENCE DRAWINGS	DRG. No.	ORIGINAL DRAWING SIZE	A1

PRELIMINARY

IDEMITSU MINING
BOGGABRI CONCEPT STUDY
600TPH CPP - MATERIALS HANDLING
DMB, DMC & SPIRALS - FLOW SHEET

DRAWING No: **6.2**
 REVISION **A**

APPENDICIES

Appendix 1	Study Standards
Appendix 2	Reserve Estimation
Appendix 3	Work Schedule

Estimate class	Scoping - Conceptual Study - Phase 1	Pre-feasibility Study - Phase 2	Feasibility Study – Phase 3 and Investment Decision	Execution Phase 4 – Definitive Estimate
A1 - Mining Costs:				
Resources/Reserves Status	Indicated	Probable	Proven/Probable	Proven/Probable
Resource/Reserve Analysis	Limited Data	Cross Sections	Detailed Block Model	Detailed Block Model
Geology	Preliminary	Preliminary	Detailed	Detailed
Geotechnical	Preliminary	Preliminary	Detailed	Detailed
Mine Plan	Sketch Only	Preliminary	Firm detailed - General optimised	Final for Year 1 and Firm thereafter
Mine Schedule	Assumed	Approximated	Calculated – Detail	Final for Year 1 and Firm thereafter
Mine Equipment	Assumed	In house data	Optimised	Quoted Specifically
Mine Services	Assumed	Sketch design	Full Outlines	Firm basis
A2 - Capital Cost Estimating Methodology:				
Direct Costs:				
Equipment Quotes	None – factorised	Single check price	Multiple quotes	Fixed Prices
Civil/Structural	Material Supply	Sketched only	MTO & Quotes	Benchmarked
Mechanical/piping	and Construction	% of key equipment	MTO's & Hours	to actual
Electrical/Instruments		\$ per kw	MTO's & Hours	data
Information Systems / Control Systems		% of total budget	Mix of calculated and multiple quotes	Firm and Tender Prices
Labour Rates		Current best information	Current quotes	Actual
Labour Productivity		Not Applicable – included in factorisation	Evaluated	Evaluated
Construction Equipment		\$ / Hr	\$ / Hr	Quotes

Estimate class	Scoping - Conceptual Study - Phase 1	Pre-feasibility Study - Phase 2	Feasibility Study - Phase 3 and Investment Decision	Execution Phase 4 - Definitive Estimate
Indirect Costs:				
EPCM and other Services and Temporary Facilities	% per total	% of total	Calculated	Calculated
Owners Costs:				
Management Services, Commissioning, Preproduction, Contingency and Provisions	% per total	Calculated – Preliminary	Calculated – Detailed	Calculated and firm quotes
Contingency Amount	Typically 20 to 25 %	Typically 15 to 20%	Typically 10 to 15%	Typically 5 to 10%
A3 - ESTIMATE CLASS				
Level of Definition (expressed as a percentage of complete engineering and project definition using appropriate indicators ie % of EPCM, % of Engineer)	1% to 2% of full project definition	10% to 15% of full project definition	10% to 25% of full project definition	40% to 60% of Full Project Definition
Typical Accuracy Range	± 30 to ± 35%	± 20 to ± 25%	± 10 to ± 15%	± 5 to ± 10%
Quotations / Tenders - Supporting the Estimates	None - Benchmark Data	Equipment Quotes and benchmark material supply and construction rates.	Multiple firm equipment quotes. Multiple material supply and construction quotes and rates checked.	Equipment on order, tendered or firm quotes available. Tenders for Material Supply and Construction costs. Some contracts awarded.
A4 - General Project Data needed to support the Estimate Class:				
Project Scope Description	General	Preliminary	Defined	Defined
Soils and Hydrology Report	Assumed	Preliminary	Defined	Defined
Integrated Project Plan (Mine & Plant)	General	Approximate	Specific	Specific
Contracting Strategy - Implementation	Assumed	Outline	Defined and Optimised	Defined and Detailed

Estimate class	Scoping - Conceptual Study - Phase 1	Pre-feasibility Study - Phase 2	Feasibility Study - Phase 3 and Investment Decision	Execution Phase 4 - Definitive Estimate
Project Master Schedule - Implementation	Outline	Preliminary Bar chart	Detailed and Resourced Critical Path	Actual to Date, Detailed and Resourced To Go Critical Path.
Project Master Schedule - Commissioning and Ramp-up	Assessed	Outlined	Detailed Critical Path	Detailed and Resourced Critical Path
Work Breakdown Structure	Outline	Preliminary	Defined	Defined
Project Code of Accounts	None	Preliminary	Defined	Defined
Escalation Strategy	None	Preliminary	Defined	Defined
Foreign Exchange Strategy	None	Preliminary	Defined	Defined
Contingency	Assessed / Factorised	Calculated	Detailed Calculation and Analysis	Detailed Calculation on the To Go
Accuracy	Assessed by Judgement	Evaluated	Detailed Analysis - Monte Carlo	Detailed Analysis - Monte Carlo
Basis of Estimate and Methodology Statement	Outline	Preliminary	Complete	Complete
A5 - Engineering Deliverables:				
Block Flow Diagrams	Started / Preliminary	Preliminary / Complete	Complete	Complete
Process Flow Diagrams	Possibly Started	Started / Preliminary	Preliminary / Complete	Complete
P&ID's	None	Started	Preliminary / Complete	Complete
Heat & Material Balances	None Likely	Started	Preliminary / Complete	Complete
Design Criteria	Outline	Preliminary	Preliminary / Complete	Complete
Overall Site Plan	Sketch (Possible)	Started	Preliminary / Complete	Complete

Estimate class	Scoping - Conceptual Study - Phase 1	Pre-feasibility Study - Phase 2	Feasibility Study - Phase 3 and Investment Decision	Execution Phase 4 - Definitive Estimate
Plot Plans	None	Started / Preliminary	Preliminary / Complete	Complete
Process/Mechanical Equipment List	Started / Preliminary	Started / Preliminary	Preliminary / Complete	Complete
Electrical Equipment List	None	Started / Preliminary	Preliminary / Complete	Complete
Specifications and Datasheets	None	Started	Preliminary / Complete	Complete
GA Drawings by Facility/Area	None	None	Preliminary / Complete	Complete
Mechanical / Piping Discipline Drawings	None	Started	Preliminary / Complete	Preliminary / Complete
Civil / Structural Discipline Drawings	None	Started	Preliminary / Complete	Preliminary / Complete
Electrical Single Line Diagrams	None	Started / Preliminary	Preliminary / Complete	Complete
Electrical Discipline Drawings	None	Started	Started	Preliminary / Complete
Instrumentation & Control Discipline Drawings	None	None	Started	Preliminary / Complete
Information Systems	None	Started / Preliminary	Preliminary / Complete	Complete
Information Systems Plan, as per PEP	None	Started	Preliminary / Complete	Complete
Spare Parts Listings	None	Started	Started / Preliminary	Complete
Environmental	Assessed only	Preliminary Study	EIS underway & may be nearing completion	EIS Complete
Cash Flow	None needed	Preliminary-annual	Detailed - Quarterly and Monthly	Updated monthly

B - OPERATING COSTS

Estimate Class	Scoping – Phase 1	Conceptual Study	Prefeasibility Study Phase 2	Feasibility Study Phase 3 and Investment Decision	Execution Phase 4 - Definitive Estimate
B1 - Operating Cost Estimate Methodology:					
Basis of Estimate and Methodology Statement	Outline		Preliminary	Complete	Complete
Staffing Levels	Factorised		Preliminary	Detailed Estimate	Known
Cost Rates	Factorised		Calculated	Known basis	Known
Consumables	Factorised		Factorised	Estimated	Estimated - Detailed
Maintenance	Factorised		Factorised	Estimated	Estimated - Detailed
Spares	Factorised		Factorised	Estimated	Some quotes
B2 - Operating Costs:					
Labour Rates	Assumed average		Separate categories	Detailed Review	Detailed Review and updated to Actuals
Labour Burden	Assumed average		Calculated	Calculated	Calculated and updated to Actuals
Power & Water Costs	Data bank		Preliminary Calculations	Detailed Calculations	Detailed Calculations and updated to Actuals
Fuel Costs	Data bank		Budget Quotes	Firm written quotes	Firm written quotes and updated to Actuals
Expendable Supplies & Reagents	Data bank		Budget Quotes	Firm written quotes	Firm written quotes and updated to Actuals
Transport and Logistics	factored % of total estimate		Preliminary Calculations	Quotes and Calculations	Detailed Calculations and Quotes
B3 -Post Commissioning:					
Working Capital	factored % of total estimate		Preliminary Calculations	Detailed Calculations	Detailed Calculations
Sustaining / Improvement Capital	Capital / Factored %		Factorised %	Detailed Calculations	Detailed Calculations and updated to Actuals

Estimate Class	Scoping – Conceptual Study Phase 1	Prefeasibility Study Phase 2	Feasibility Study Phase 3 and Investment Decision	Execution Phase 4 - Definitive Estimate
Business Systems (core and support systems, e-commerce, business management, office, etc)	factored % of total estimate	Preliminary Calculations	Detailed Review	Detailed Review and updated to Actuals
Training	factored % of total estimate	Preliminary Calculations	Detailed Review	Detailed Review and updated to Actuals
Ramp Up	factored % of total estimate	Preliminary Calculations	Detailed Review	Detailed Review and updated to Actuals
Insurances	factored % of total estimate	Budget Quotes	Firm written quotes	Firm written quotes and updated to Actuals
Escalation	factored % of total estimate	Preliminary Calculations	Detailed Review	Detailed Review and updated to Actuals
Foreign Currency Provisions	factored % of total estimate	Preliminary Calculations	Detailed Review	Detailed Review and updated to Actuals
Accuracy	±15 to 20%	±10 to 15%	±5% to ±10% (more to ±5%)	±5% or better

General Notes: Although this Cost Estimate Guideline defines the classes of Estimates, the classes should not be considered absolute levels to be complied with in all categories of costs to achieve a certain class.

Similarly, a particular class of estimate for Capital Costs may be met, but for demonstrable reasons the Operating Cost Estimates may achieve a different class of estimate.

The lowest class of estimate achieved for any area should decide the overall class achieved.

Should one or more individual categories of costs not achieve the stated levels, but other categories exceed the stated level, then the overall class in that area may be achieved.

The quality of definitions and accuracy of the estimates shall be the determinates of the Class of Estimate achieved by the end of a defined Phase of activities.

Terms Used:

None = work on development of deliverable has not begun, or is only conceptual in nature.

Started = work on deliverable has begun. Development is typically limited to sketches, rough outlines, or similar levels of early completion, may be sufficient to indicate, but not define the scope.

Preliminary = work on deliverable is advanced. Interim, cross functional reviews have usually been conducted. Development may be near completion except for final reviews and approvals. Sufficient to define scope and major sizes and locations to allow MTO's to be prepared.

Complete = deliverable has been reviewed and approved. Sufficient to define scope and quantities to allow trackable MTO's to be prepared and quotations obtained.

Assumed = based on non-demonstrable experience.

Approximate = sketch or similar based on assumed or assessed data.

Outlined = primary features or dimensions shown.

Calculated = Utilising inputs, derive sizes or features on a trackable basis.

Defined = outline able to be aligned to a specific engineering or other deliverable.

Assessed = based on judgement of benchmarks.

Factorised = proportioned from previous cost data.

Activity ID	Activity Name	Calendar	Start	Finish
Development plan for Boggabri - UG Concept study				
EIA Approval				
ENV100	Finalise Environmental Approval P...	BOGABRI CALEN.	04-Jan-10	27-Apr-12
ENV120	EIA Approval	Standard 5 Day Wor...	04-Jan-10	01-Feb-10
ENV110	Submission and Approval of Environ...	Boggabri247	04-Jan-10	30-Jul-10
Geology, Exploration & geo technical review				
GEO 100	Exploration Planning	BOGABRI CALEN.	04-Jan-10	21-Jan-10
GEO 140	Geology and Exploration	Standard 5 Day Wor...	04-Jan-10	21-Jan-10
GEO 110	Drilling program	Boggabri247	21-Jan-10	22-Mar-10
GEO 120	Analysis and Testing	BOGABRI CALEN.	01-Feb-10	12-Mar-10
GEO 130	Geology review	BOGABRI CALEN.	15-Mar-10	21-Apr-10
Geo- technical review				
A1535	Geo technical review	Standard 5 Day Wor...	22-Apr-10	20-Jul-10
A1420	Review assem, roof & floor conditio...	Standard 5 Day Wor...	22-Apr-10	27-Apr-10
A1430	Review Stress Regimes- Horizontal...	Standard 5 Day Wor...	28-Apr-10	03-May-10
A1440	Evaluate Structural Geology	Standard 5 Day Wor...	28-Apr-10	03-May-10
A1460	Interpretation of Geophysical data	Standard 5 Day Wor...	04-May-10	06-May-10
A1450	Define RMR	Standard 5 Day Wor...	07-May-10	10-May-10
A1470	Caving & Subsideance Studies - Mil...	Standard 5 Day Wor...	13-May-10	26-May-10
A1480	Pillar & Roadway Dimensions	Standard 5 Day Wor...	27-May-10	15-Jun-10
A1480	Assess Panel Orientations	Standard 5 Day Wor...	16-Jun-10	24-Jun-10
A1500	Mine Design Consideration	Standard 5 Day Wor...	25-Jun-10	02-Jul-10
A1510	Ground Support Design	Standard 5 Day Wor...	02-Jul-10	22-Jul-10
A1520	Multiple Seam Mining Consideration	Standard 5 Day Wor...	02-Jul-10	08-Jul-10
A1525	Develop geotechnical model	Standard 5 Day Wor...	09-Jul-10	20-Jul-10
Mine Planning				
Access Strategy				
A1340	Access Strategy	Standard 5 Day Wor...	21-Jul-10	23-Aug-10
A1170	Strategic consideration for access str...	Standard 5 Day Wor...	21-Jul-10	23-Jul-10
A1180	Evaluation of alternative access str...	Standard 5 Day Wor...	26-Jul-10	02-Aug-10
A1190	Design selected access strategies...	Standard 5 Day Wor...	04-Aug-10	12-Aug-10
A1191	Identify location of service connecti...	Standard 5 Day Wor...	13-Aug-10	23-Aug-10
A1200	Interaction & impact on proposed o...	Standard 5 Day Wor...	17-Aug-10	18-Aug-10
Mining Plan-Option Analysis				
A1350	Mining Plan-Option Analysis	Standard 5 Day Wor...	19-Aug-10	21-Sep-10
A1210	Details of Proposed Mining Method	Standard 5 Day Wor...	19-Aug-10	27-Aug-10
A1220	Design criteria	Standard 5 Day Wor...	30-Aug-10	01-Sep-10
A1230	Evaluate/ Benchmarking	Standard 5 Day Wor...	30-Aug-10	31-Aug-10
A1240	General mine layout	Standard 5 Day Wor...	02-Sep-10	10-Sep-10
A1250	Evaluate alternative mining layouts	Standard 5 Day Wor...	13-Sep-10	21-Sep-10
A1260	Development of extraction strategy...	Standard 5 Day Wor...	13-Sep-10	21-Sep-10
A1270	Assessment of geotechnical design...	Standard 5 Day Wor...	13-Sep-10	21-Sep-10
Reserve estimates and productivity model				
A1360	Reserves and Productivity model	Standard 5 Day Wor...	22-Sep-10	28-Oct-10
A1280	Establish industry benchmarks	Standard 5 Day Wor...	22-Sep-10	23-Sep-10
A1290	Define assumptions for the model	Standard 5 Day Wor...	24-Sep-10	24-Sep-10
A1291	Impact of fault & intrusions on mini...	Standard 5 Day Wor...	27-Sep-10	28-Sep-10
A1300	Develop productivity model for dev...	Standard 5 Day Wor...	30-Sep-10	05-Oct-10
A1310	Schedule sequence of extraction	Standard 5 Day Wor...	06-Oct-10	08-Oct-10
A1320	Use software to assess reserves	Standard 5 Day Wor...	11-Oct-10	19-Oct-10
A1330	Develop overall mine schedule	Standard 5 Day Wor...	20-Oct-10	28-Oct-10
Seam Gits				
A1770	Seam Gas	Standard 5 Day Wor...	22-Sep-10	02-Dec-10
A1530	Review of available & historic dat...	Standard 5 Day Wor...	22-Sep-10	28-Sep-10
A1540	Assess different parameters for CS...	Standard 5 Day Wor...	29-Sep-10	12-Oct-10
A1550	Develop gas resource model	Standard 5 Day Wor...	13-Oct-10	02-Nov-10
A1560	Gas management plan - design...	Standard 5 Day Wor...	03-Nov-10	23-Nov-10
A1570	Gas drainage cost - capital & opera...	Standard 5 Day Wor...	24-Nov-10	02-Dec-10
Spontaneous Combustion				
A1645	Vent modelling	Standard 5 Day Wor...	29-Oct-10	09-Dec-10
A1580	Design parameters	Standard 5 Day Wor...	29-Oct-10	29-Oct-10
A1590	Gatecrack vent design	Standard 5 Day Wor...	05-Nov-10	11-Nov-10
A1600	Longwall vent design	Standard 5 Day Wor...	12-Nov-10	18-Nov-10
A1610	Sealing & special requirements	Standard 5 Day Wor...	19-Nov-10	25-Nov-10
A1620	Monitoring / Alarms	Standard 5 Day Wor...	26-Nov-10	02-Dec-10

2010 2011 2012 2013 2014 2015

J F M A M J J A S O N D J F M A M J J A S O N D J F M A M J J A S O N D J F M A M J J A S O N D J F M A M

Remaining Level of Effort

Boggabri activities

Actual Level of Effort

Actual Work

Page 1 of 6

TASK filter: All Activities

© Primavera Systems, Inc.

2015	2016	2017	2018	2019	2020	2021	2022	2023
J	J	J	J	J	J	J	J	J
A	A	A	A	A	A	A	A	A
S	S	S	S	S	S	S	S	S
O	O	O	O	O	O	O	O	O
N	N	N	N	N	N	N	N	N
D	D	D	D	D	D	D	D	D
J	J	J	J	J	J	J	J	J
F	F	F	F	F	F	F	F	F
M	M	M	M	M	M	M	M	M
A	A	A	A	A	A	A	A	A
M	M	M	M	M	M	M	M	M
J	J	J	J	J	J	J	J	J
J	J	J	J	J	J	J	J	J
A	A	A	A	A	A	A	A	A
S	S	S	S	S	S	S	S	S
O	O	O	O	O	O	O	O	O
N	N	N	N	N	N	N	N	N
D	D	D	D	D	D	D	D	D

2024	2025	2026	2027	2028	2029	2030	2031	2032
J F M A M J J A S O N D	J F M A M J J A S O N D	J F M A M J J A S O N D	J F M A M J J A S O N D	J F M A M J J A S O N D	J F M A M J J A S O N D	J F M A M J J A S O N D	J F M A M J J A S O N D	J F M A M J J A S O N D

Legend:

- Remaining Level of Effort
- Boggabri activities
- Actual Work
- BOggabral LOE
- Actual Level of Effort

TASK filter: All Activities

Page 3 of 6

© Primavera Systems, Inc.

Activity ID	Activity Name	Calendar	Start	Finish	2010	2011	2012	2013	2014	2015
A1625	Vent Modelling	Standard 5 Day Wor...	03-Dec-10	09-Dec-10						
Mine Equipment and Services										
A1649	Mine Services	Standard 5 Day Wor...	13-Sep-10	03-Dec-10						
A1628	Plans indicating UG mine service l...	Standard 5 Day Wor...	13-Sep-10	17-Sep-10						
A1629	Coal conveying strategy - location	Standard 5 Day Wor...	20-Sep-10	22-Sep-10						
A1630	Coal conveying strategy - calculatio...	Standard 5 Day Wor...	20-Sep-10	24-Sep-10						
A1631	Manpower transport strategy	Standard 5 Day Wor...	20-Sep-10	24-Sep-10						
A1632	UG services - supply & distribution...	Standard 5 Day Wor...	27-Sep-10	05-Oct-10						
A1633	Identify list of equipments- develop...	Standard 5 Day Wor...	03-Oct-10	12-Oct-10						
A1634	Specification, capacity, life, mainte...	Standard 5 Day Wor...	13-Oct-10	21-Oct-10						
A1635	Mine vent requirements	Standard 5 Day Wor...	22-Oct-10	01-Nov-10						
A1636	Deveasting system	Standard 5 Day Wor...	02-Nov-10	10-Nov-10						
A1637	Communications	Standard 5 Day Wor...	11-Nov-10	19-Nov-10						
A1638	Monitoring- Emr, Mine ventilations, ...	Standard 5 Day Wor...	22-Nov-10	28-Nov-10						
A1639	Escalator/emergency systems	Standard 5 Day Wor...	29-Nov-10	03-Dec-10						
Infrastructure										
Site Infrastructure										
A1685	Site Infrastructure	Standard 5 Day Wor...	19-Aug-10	28-Jan-11						
A1640	Access roads	Standard 5 Day Wor...	19-Aug-10	28-Jan-11						
A1650	Surface services - accommodation, p...	Standard 5 Day Wor...	19-Aug-10	15-Sep-10						
A1660	Interaction & impact on existing pro...	Standard 5 Day Wor...	16-Sep-10	27-Oct-10						
A1670	Rail - options, capacities, charges	Standard 5 Day Wor...	28-Oct-10	05-Nov-10						
A1675	Design coal flow analysis	Standard 5 Day Wor...	28-Oct-10	05-Nov-10						
Coal handling and processing										
A1890	Coal Handling and Processing	Standard 5 Day Wor...	06-Oct-10	17-Jan-11						
A1880	Coal design criteria	Standard 5 Day Wor...	06-Oct-10	04-Nov-10						
A1700	CHP quality & process design criteria	Standard 5 Day Wor...	05-Nov-10	18-Nov-10						
A1710	Waste management	Standard 5 Day Wor...	19-Nov-10	29-Nov-10						
A1720	Integration of site layout & function...	Standard 5 Day Wor...	30-Nov-10	08-Dec-10						
A1730	Stockpiling for different products	Standard 5 Day Wor...	09-Dec-10	17-Dec-10						
A1740	Blending options	Standard 5 Day Wor...	20-Dec-10	28-Dec-10						
A1750	Modelling	Standard 5 Day Wor...	29-Dec-10	06-Jan-11						
A1760	Operations integration	Standard 5 Day Wor...	29-Dec-10	17-Jan-11						
HR/IR analysis										
A1800	HR/IR Analysis	Standard 5 Day Wor...	29-Oct-10	06-Dec-10						
A1780	Existing company industry strategy...	Standard 5 Day Wor...	29-Oct-10	02-Nov-10						
A1790	Identify risk & issues of UG works...	Standard 5 Day Wor...	03-Nov-10	05-Nov-10						
A1810	Identifying training requirements- ...	Standard 5 Day Wor...	05-Nov-10	11-Nov-10						
A1820	Recruitment & Training	Standard 5 Day Wor...	12-Nov-10	25-Nov-10						
A1830	Assess requirement for accomodati...	Standard 5 Day Wor...	26-Nov-10	01-Dec-10						
A1830	Risk & opportunities	Standard 5 Day Wor...	02-Dec-10	06-Dec-10						
Financial and Cost Analysis										
A1910	Financial and Cost analysis	Standard 5 Day Wor...	31-Jan-11	06-Mar-11						
A1940	Identify capital & operating cost as...	Standard 5 Day Wor...	31-Jan-11	04-Mar-11						
A1850	Identify revenue assumptions	Standard 5 Day Wor...	07-Feb-11	11-Feb-11						
A1860	Develop financial model	Standard 5 Day Wor...	14-Feb-11	25-Feb-11						
A1870	Carry out sensitivity analysis	Standard 5 Day Wor...	28-Feb-11	04-Mar-11						
A1880	Identify threats & opportunities	7 x 24hr. Days	04-Mar-11	06-Mar-11						
Award of Contracts & Construction										
CONT 150	Award of Contracts and Construction	Boggabri-2417	10-Mar-11	27-Apr-32						
CONT 100	Define scope of work for different a...	Boggabri-2417	10-Mar-11	09-Apr-11						
CONT 110	Award Contracts	Boggabri-2417	09-Apr-11	24-Apr-11						
CONT 120	Mobilisation of equipment and Pers...	Boggabri-2417	24-Apr-11	26-Apr-11						
CONT 130	Construction phase-Portals and ac...	Boggabri-2417	26-Apr-11	25-Apr-12						
CONT 145	Dev CMI2 Bypass	Boggabri-2417	01-Aug-11	29-Jul-16						
CONT 135	Dev CMI1 Bypass	Boggabri-2417	25-May-12	16-Dec-17						
CONT 195	LW Bypass	Boggabri-2417	01-Jun-12*	02-May-20						
CONT 165	Javeling CMI2	Boggabri-2417	05-Aug-16*	16-Mar-23						
CONT 155	Javeling CMI1	Boggabri-2417	20-Dec-17*	16-Jul-26						
CONT 205	LW Javeling	Boggabri-2417	25-May-20*	12-Jan-27						
CONT 185	Merdown CMI2	Boggabri-2417	23-Mar-23*	31-Jan-32						
CONT 175	Merdown CMI1	Boggabri-2417	20-Jul-26*	31-Jan-32						
CONT 215	LW Merdown	Boggabri-2417	10-Mar-27*	27-Apr-32						

20-Oct-09 23:40

BOGGABRI DEVELOPMENT PLAN

Development plan for Boggabri - UG Concept study

Page 4 of 6

TASK filter: All Activities

Actual Work

Remaining Level of Effort

Boggabri activities

Boggabri LOE

Actual Level of Effort

© Primavera Systems, Inc.

